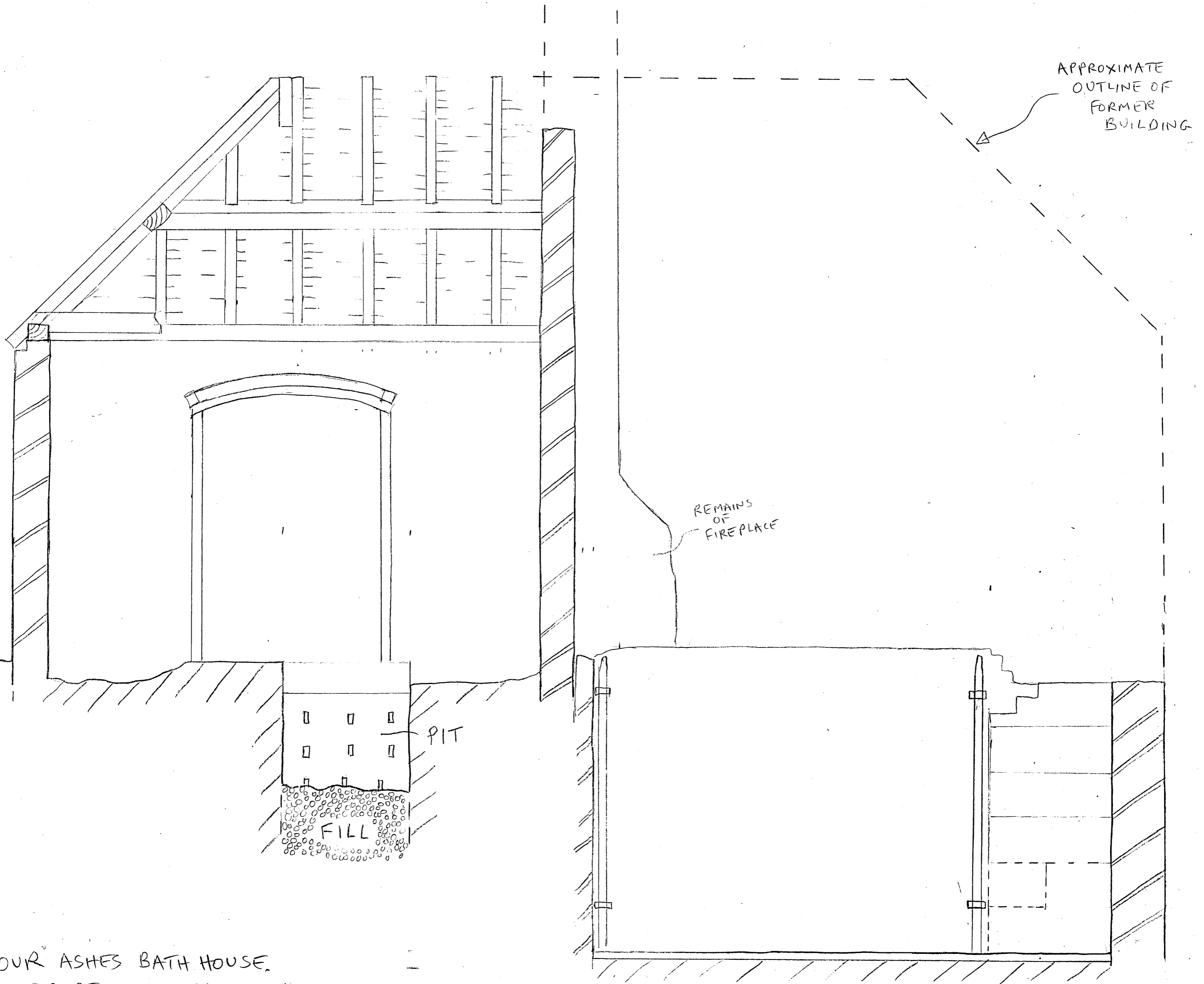


STOURBRIDGE ENVILLE
FOUR ASHES HALL
ENASH 12 2012.LH.61

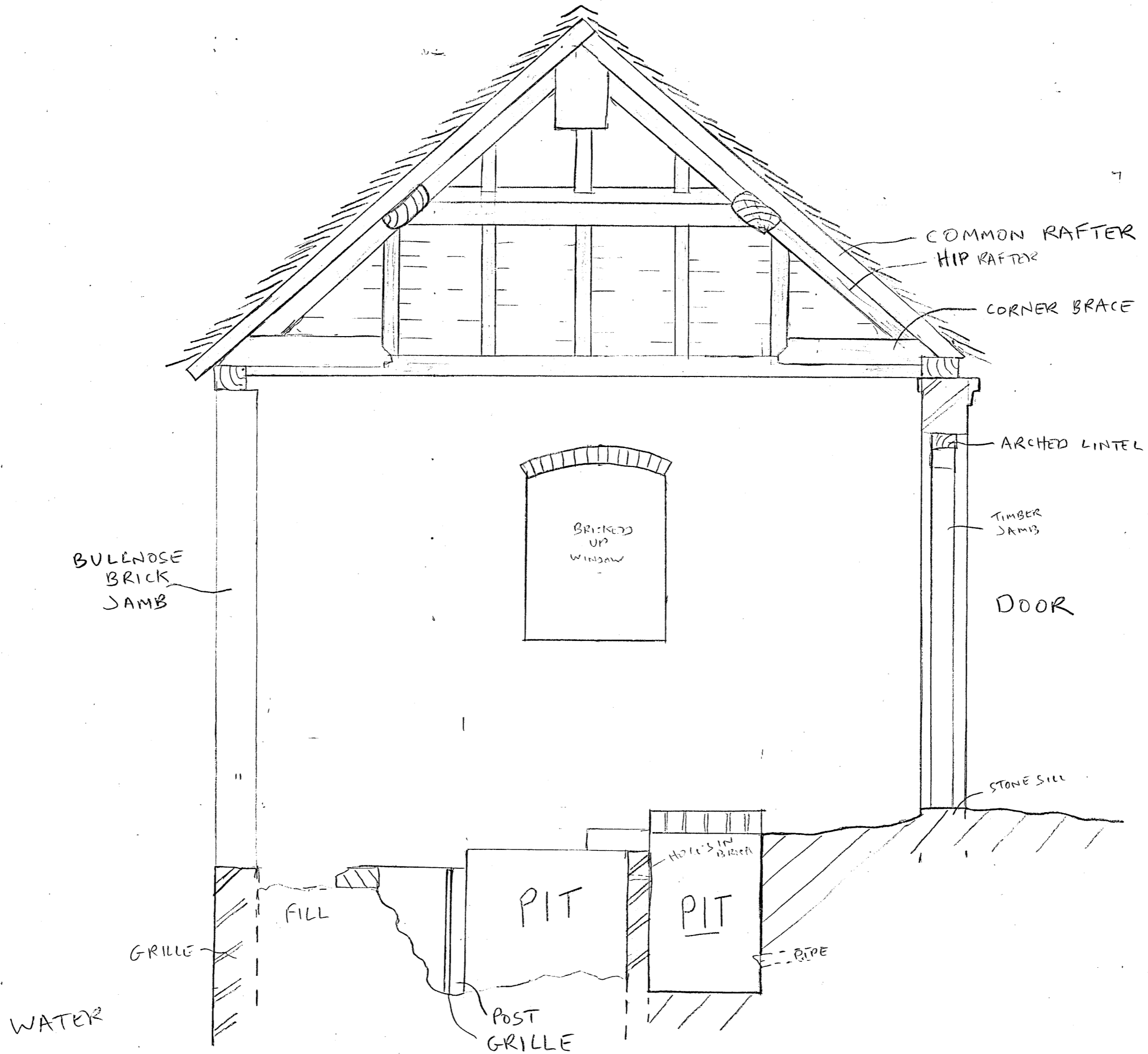
CROSS SECTION LOOKING EAST
1:20



FOUR ASHES BATH HOUSE
SITE CODE: ENASH 12
CROSS SECTION LOOKING EAST
SCALE: 1:20
DRAWN: JONATHAN GILL
DATE: MARCH 2012

STOURBRIDGE ENVILLE
FOUR ASHES HALL 1:20
ENASH 12 2012.LH.61 CROSS SECTION LOOKING NORTH

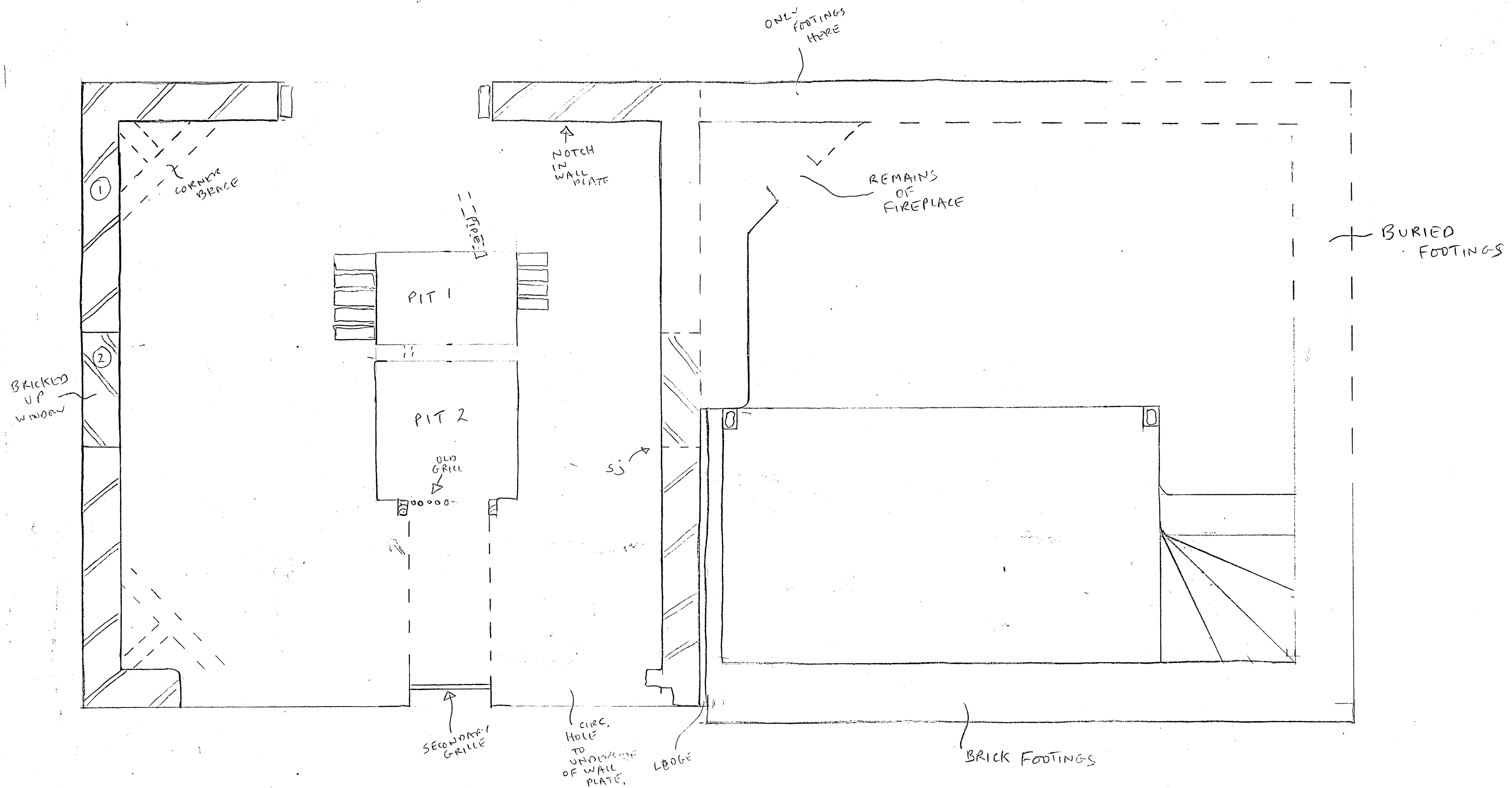
FOUR ASHES HALL BATH HOUSE
SITE CODE: ENASH 12
DRAWN: JONATHAN GILL
DATE: MARCH 2012
CROSS SECTION
LOOKING NORTH
SCALE: 1:20



STOURBRIDGE ENVILLE
 FOUR ASHES HALL
 ENASH 12 2012. LH. 61

1:20

GROUND FLOOR PLAN



PIT 1

c. 93cm DEEP. RENDERED WALLS, RENDERED BASE BUT IT LOOKS LIKE (POSSIBLY) THERE WAS A FLOOR OF SQUARE FLOOR TILES - c. 20cm² x 5cm TALL LOTS OF SIMILAR TILES TOWARDS BASE MIXED INTO SLUDGE, NOT IN-SITU BUT POSSIBLY DISLODGED FROM FORMER BASE ON REFLECTION (I THINK THESE PROBABLY NOT FROM BASE FROM THIS PIT - TOO DISLODGED + TOO MANY. POSS WAS FROM GEN FLOOR + DUMPED HERE. THE END OF A PIPE IS VISIBLE IN WALL, POSSIBLY FROM NEARBY PUMP HOUSE. THE WALL LINKING TO PIT 2 IS NOT RENDERED + HAS GAPS/PERFORATIONS BUILT IN.

PIT 2

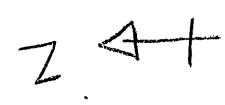
INFILLED WITH GRAVEL/PEBBLES. POSSIBLY A FILTRATION SYSTEM BUT POSS JUST DUMPED. RENDERED WALLS. BASE NOT REACHED; POSS SAME AS PIT 1. ALSO SIMILAR GRAVEL IN 'CONDUIT TO LAKE. OLD GRILL AT INNER END WITH VERTICAL METAL BARS. LATER GRILLE TO OTHER END. ROTTEN TIMBER POSS TO SIDES OF OLD GRILLE.

MAIN ROOM - GENERAL

WALLS BRICK, TRACES OF WHITE PAINT, NOT REALLY A CLUMP, CONSISTENT BAND. V. LITTLE OF FLOOR REMAINS - BRICKS AROUND PIT 1 BUT OTHERWISE JUST EARTH AT LOWER LEVEL. NOTCH IN WALL PLATE AT SE CORNER V. SUGGESTIVE OF FORMER CORNER BRACE HERE BUT NO REAL SUGGESTION THAT THERE WAS EVER HIPPED CORNER HERE. (?) THE MAIN ROOF ALL LOOKS PRIMARY. ALSO INTERESTING TO NOTE A CIRCULAR BOLT HOLE IN WALL PLATE TO SW CORNER - SIMILAR TO HOLE FROM CORNER BRACE AT NW CORNER.

S. JOINTS IN S. WALL THAT MIGHT BE BLOKED WINDOW IN N WALL - SO PRESUMABLY THE FLUE ETC IS SECONDARY ON OTHER SIDE.

ROOF - ELM, P. PURLIN TO EACH SLOPE, RAFTERS SLIGHTLY NOTCHED + GO OVER PURLIN. NO RIDGE PIECE (RAFTERS) c. 9cm TALL x 7cm WIDE. CORNER BRACE - 15cm x 15. WALL PLATE 12x20. MAIN TIMBER (NAILS) - PURLINS TO HIP RIDGE. HIPS - 22x6cm.



FOUR ASHES HALL BATH HOUSE
 ENASH 12
 GROUND FLOOR PLAN
 SCALE 1:20
 DRAWN: JON GILL
 DATE: MARCH 2012