

131 Slough Road Datchet Berkshire



Archaeological Attendance Report



Client: Victoria Beacon

Issue No: 1
OA Job No: 5734
NGR: SU983780



Client Name: Victoria Beacon
Client Ref No:
Document Title: 131 Slough Road, Datchet
Document Type: Archaeological Attendance Report
Issue/Version Number: 1
Grid Reference: SU983780
Planning Reference:
Invoice Code: DASREV
OA Job Number: 5734
Site Code: DASR13
Receiving Museum:
Museum Accession No.:
Event No.:

Issue	Prepared by	Checked by	Approved by	Signature
1	Mark Gibson Burials Supervisor	Helen Webb Burials Project Officer	Ian Scott Project Officer, Post-excavation and Publications	

Document File Location: Y:\burials dept\1 OAS PROJECTS\131 Slough Road, Datchet_ DASR13
Graphics File Location: \\servergo\invoice codes a thru h\D_invoice codes\DASREV
Illustrated by: Markus Dylewski

Disclaimer:

This document has been prepared for the titled project or named part thereof and should not be relied upon or used for any other project without an independent check being carried out as to its suitability and prior written authority of Oxford Archaeology being obtained. Oxford Archaeology accepts no responsibility or liability for the consequences of this document being used for a purpose other than the purposes for which it was commissioned. Any person/party using or relying on the document for such other purposes agrees, and will by such use or reliance be taken to confirm their agreement to indemnify Oxford Archaeology for all loss or damage resulting therefrom. Oxford Archaeology accepts no responsibility or liability for this document to any party other than the person/party by whom it was commissioned.

© Oxford Archaeology Ltd 2013

Janus House
Osney Mead

Oxford OX2 0ES

t: +44 (0) 1865 263800

e: info@oxfordarch.co.uk

f: +44 (0) 1865 793496

w: oxfordarchaeology.com

Oxford Archaeology Limited is a Registered Charity No: 285627



131 Slough Road, Datchet

Archaeological Attendance Report

Written by Mark Gibson

and illustrated by Markus Dylewski

Table of Contents

Summary.....	3
1 Location and Scope of Work.....	3
2 Methodology.....	3
3 Description of Deposits.....	3
4 Osteological Analysis.....	3
5 Conclusion and Note on the Reburial of the Human Remains.....	4
Appendix A. Archaeological Context Inventory.....	5
Appendix B. References.....	6
Appendix C. Summary of Site Details.....	7



List of Figures

Fig. 1 Site location

Fig. 2 Plan of trench

Fig. 3 Location of reburial

List of Plates

Plate 1 Skeleton 1

Plate 2 View of trench looking north-west



Summary

On 19th August 2013 Oxford Archaeology carried out the archaeological excavation and recording of a single human inhumation burial at 131 Slough Road, Datchet. The undated burial was discovered during the excavation of footing trenches as part of extension works to the property.

1 LOCATION AND SCOPE OF WORK

- 1.1.1 On the 19th of August 2013 Oxford Archaeology (OA) were commissioned by Victoria Beacon to carry out the archaeological excavation and recording of an inhumation burial at 131 Slough Road, Datchet, Berkshire, SL3 9AE.
- 1.1.2 The human remains were discovered within a hand-dug footing trench, excavated as part of extension works to the property. The trench was aligned north-west to south-east and was excavated through the ground floor of 131 Slough Road, Datchet, Berkshire (Figure 1).

2 METHODOLOGY

- 2.1.1 Excavation, recording and lifting of human remains was undertaken in accordance with the methods detailed in the OA Fieldwork Manual (Wilkinson 1992) and in line with the BABAO Code of Practice and Code of Ethics (2010). All archaeological deposits were recorded using *pro-forma* recording forms.
- 2.1.2 The skeleton was planned at a scale of 1:20 (Figure 2) and a digital photographic record was made.
- 2.1.3 Osteological recording was undertaken on site by a qualified osteoarchaeologist. An estimation of age and sex was carried out, and all bones were rapidly scanned to look for evidence of pathology. All osteological recording was undertaken in accordance with standard guidelines (Brickley and McKinley 2004).

3 DESCRIPTION OF DEPOSITS

- 3.1.1 The burial was revealed within a 2.6m long, 0.6m wide footing trench, with a depth of up to 0.76m below the current floor level.
- 3.1.2 The soil horizon encountered below the floor level comprised a mid yellow-brown, alluvial sandy silt (4) of at least 0.3m thick. The grave (2) was dug through this soil, but due to the similarity between the grave backfill (3) and the alluvium (4) the grave cut could not be defined. No dating evidence was recovered from the grave fill.
- 3.1.3 Within the grave was a single adult skeleton. The skeleton, orientated with the head to WNW and feet to ESE, was laid in a supine (on the back) position, with the legs extended and left arm flexed. The left arm was flexed at the elbow, with the forearm positioned across the abdomen (Plates 1 and 2). The skull and right arm lay beyond the limits of the trench.

4 OSTEOLOGICAL ANALYSIS

- 3.1.1 The skeleton (1) was estimated to be that of an adult female, based on sexually dimorphic features of the pelvis. In addition, the bones were notably gracile, a feature also in keeping with a female individual.



- 3.1.2 Whilst the skeleton was clearly adult, features of the auricular surface (a joint surface of the pelvis) indicated that the individual was probably less than 35 years of age at death.
- 3.1.3 The stature of the individual could not be estimated due to the absence of a complete long bone. No lesions of pathology were observed.

5 CONCLUSION AND NOTE ON THE REBURIAL OF THE HUMAN REMAINS

- 3.1.1 No artefactual evidence was recovered from the single inhumation burial revealed at 131 Slough Road, thus the burial remains undated. However, whilst it cannot be confirmed, its roughly east-west orientation and supine burial position are consistent with a Christian burial.
- 3.1.2 In line with the conditions outlined in the Ministry of Justice Burial Licence for the excavation of the skeleton at 131 Slough Road, all human remains excavated from the trench were reburied at the property. The remains were buried within a newly excavated grave in the rear garden of the property, outside the footprint of the new extension (Figure 3). A cherry tree will be planted on its location.



APPENDIX A. ARCHAEOLOGICAL CONTEXT INVENTORY

Context	Type	Thickness / depth below GL	Width	Length	Comments	Finds	Date
001	Skeleton	0.76m BGL			Skeleton	/	?
002	Cut	0.3m +	?	?	Grave cut - arbitrary	/	?
003	Fill	0.3m +			Grave fill	None	?
004	Layer	0.3m +			Alluvial deposit	None	



APPENDIX B. REFERENCES

BABAO 2010 *British Association of Biological Anthropology and Osteoarchaeology Code of Practice and Code of Ethics*, online at: <http://www.babao.org.uk/index/ethics-and-standards>

Brickley, M, and McKinley, J, 2004 *Guidelines to the Standards for Recording Human Remains*, IFA Paper, 7, Oxford

Wilkinson, D (ed.) 1992 *OA Fieldwork Manual*, Unpublished document (Oxford Archaeology)



APPENDIX C. SUMMARY OF SITE DETAILS

Site name:	131 Slough Road, Datchet
Site code:	DASR13
Grid reference:	SU 983 780
Type of archaeological work:	Archaeological attendance to record, lift and oversee reburial of a single articulated human skeleton.
Date and duration of project:	1 day – 19 th August 2013
Area of site:	c. 1.5m ²
Summary of results:	A single articulated human skeleton was revealed during extension works to the property. The skeleton was laid in a supine position on a roughly east-west orientation. No dating evidence was recovered from the burial. Following excavation the skeleton was reburied within the rear garden of the property.
Location of archive:	No museum currently available. Archive temporarily retained at Oxford Archaeology.



Reproduced from the Landranger 1:50,000 scale by permission of the Ordnance Survey on behalf of The Controller of Her Majesty's Stationery Office © Crown Copyright 1998. All rights reserved. Licence No. AL 10000569

Figure 1: Site location

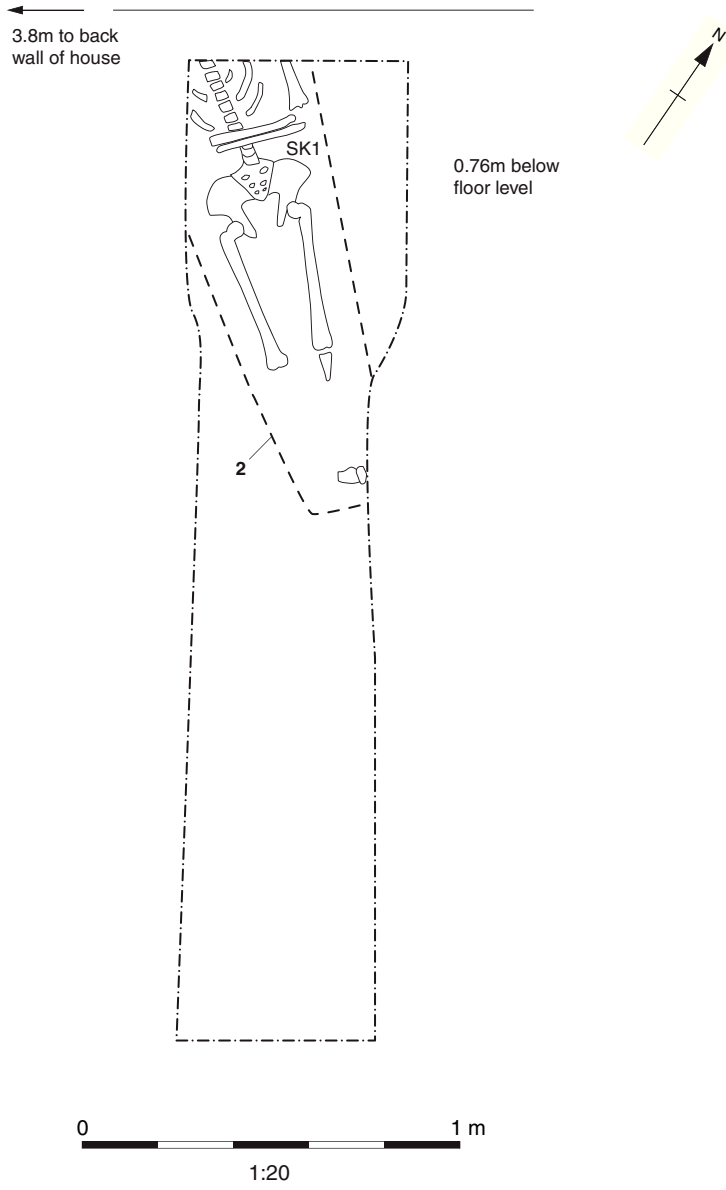


Figure 2: Plan of trench

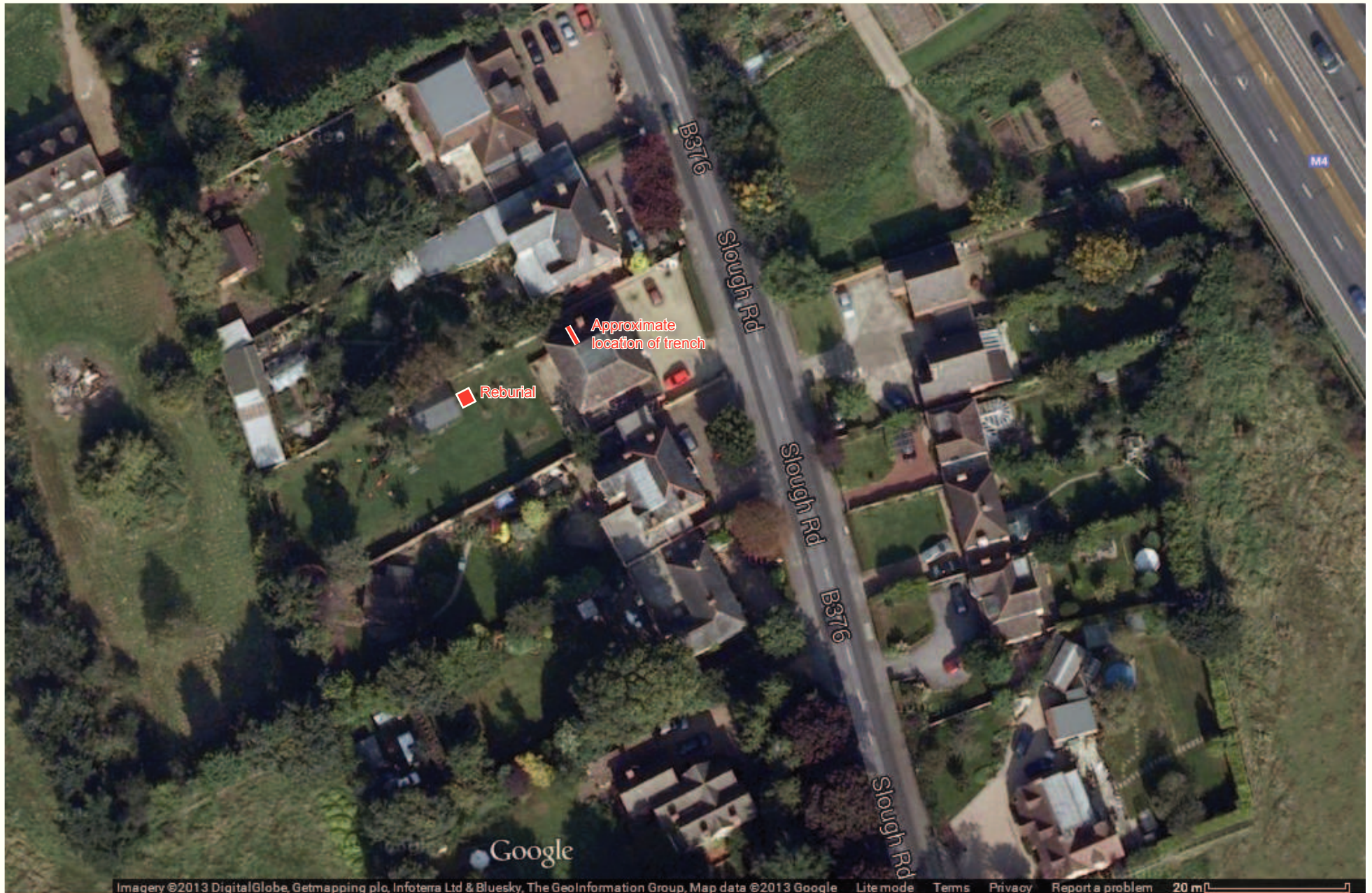


Figure 3: Location of reburial



Plate 1: Skeleton 1

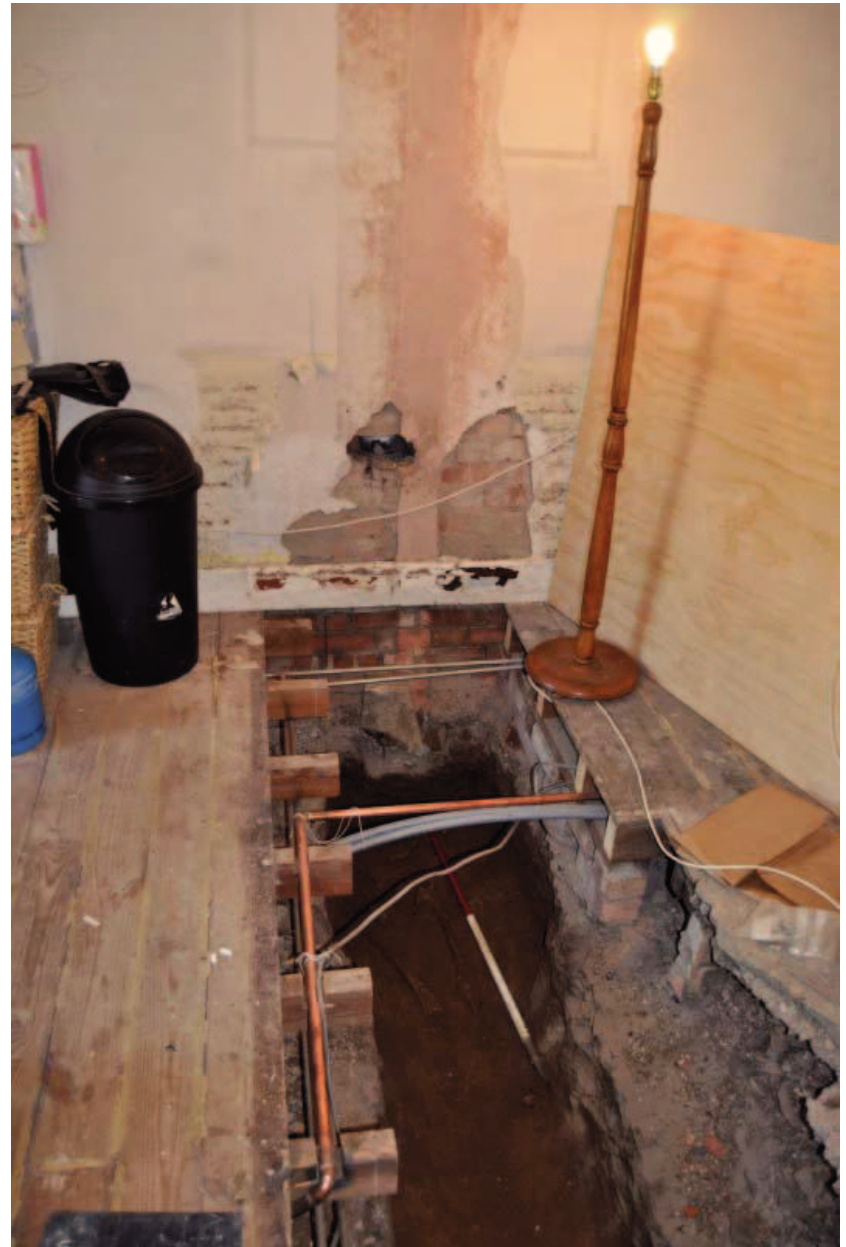


Plate 2: View of trench looking north-west



**Head Office/Registered Office/
OA South**

Janus House
Osney Mead
Oxford OX2 0ES

t: +44 (0) 1865 263 800
f: +44 (0) 1865 793 496
e: info@oxfordarch.co.uk
w: <http://thehumanjourney.net>

OA North

Mill 3
Moor Lane
Lancaster LA1 1GF

t: +44 (0) 1524 541 000
f: +44 (0) 1524 848 606
e: [oanorth@thehumanjourney.net](mailto: oanorth@thehumanjourney.net)
w: <http://thehumanjourney.net>

OA East

15 Trafalgar Way
Bar Hill
Cambridgeshire
CB23 8SQ

t: +44 (0) 1223 850 500
f: +44 (0) 1223 850 599
e: [oaeast@thehumanjourney.net](mailto: oaeast@thehumanjourney.net)
w: <http://thehumanjourney.net>



Director: David Jennings, BA MIFA FSA

*Oxford Archaeology Ltd is a
Private Limited Company, N^o: 1618597
and a Registered Charity, N^o: 285627*