

# Land at Muncey's Farm, Melbourn



## Archaeological Evaluation Report



October 2014

**Client: CgMs on behalf of Lightsource**

OA East Report No: 1677

OASIS No: oxfordar3-163594

NGR: TL 377 426

**Land at Muncey's Farm, Melbourn**

*Archaeological Evaluation*

*By Stuart Ladd BA MA PIfA*

*With contributions by Rachel Fosberry*

*Editor: Richard Mortimer MIfA*

*Illustrator: Stuart Ladd BA MA PIfA*

*Report Date: October 2014*



**Report Number:** 1677  
**Site Name:** Land at Muncey's Farm, Melbourn  
**HER Event No:** ECB4298  
**Date of Works:** September 2014  
**Client Name:** CgMs on behalf of Lightsource  
**Client Ref:** n/a  
**Planning Ref:** n/a  
**Grid Ref:** TL 377 426  
**Site Code:** MELMUN14  
**Finance Code:** MELMUN14  
**Receiving Body:** Cambridgeshire County Council  
**Accession No:** ECB4298/MELMUN14  
**Prepared by:** Stuart Ladd  
**Position:** Supervisor  
**Date:** October 2014  
**Checked by:** Richard Mortimer  
**Position:** Senior Project Manager  
**Date:** October 2014  
**Signed:** .....

**Disclaimer**

*This document has been prepared for the titled project or named part thereof and should not be relied upon or used for any other project without an independent check being carried out as to its suitability and prior written authority of Oxford Archaeology being obtained. Oxford Archaeology accepts no responsibility or liability for the consequences of this document being used for a purpose other than the purposes for which it was commissioned. Any person/party using or relying on the document for such other purposes agrees and will by such use or reliance be taken to confirm their agreement to indemnify Oxford Archaeology for all loss or damage resulting therefrom. Oxford Archaeology accepts no responsibility or liability for this document to any party other than the person/party by whom it was commissioned.*

**Oxford Archaeology East,**

15 Trafalgar Way,  
Bar Hill,  
Cambridge,  
CB23 8SQ

t: 01223 850500  
f: 01223 850599  
e: oaeast@thehumanjourney.net  
w: <http://thehumanjourney.net/oaeast>

© Oxford Archaeology East 2011

## Table of Contents

<b>1 Introduction.....</b>	<b>5</b>
1.1 Location and scope of work.....	5
1.2 Geology and topography.....	5
1.3 Archaeological and historical background.....	5
1.4 Acknowledgements.....	5
<b>2 Aims and Methodology.....</b>	<b>6</b>
2.1 Aims.....	6
2.2 Methodology.....	6
<b>3 Results.....</b>	<b>7</b>
3.1 Introduction.....	7
3.2 Trenches with no archaeology.....	7
3.3 Natural Hollows.....	7
3.4 Colluvium.....	8
3.5 Ring Ditch.....	8
3.6 Roman Hollow Way.....	9
3.7 Roman/Medieval Field Ditches.....	9
3.8 Medieval – Post-medieval Headland and Trackway:.....	9
3.9 1830s Enclosure Ditches and Trackway.....	10
3.10 Finds Summary.....	11
3.11 Environmental Summary.....	11
<b>4 Discussion and Conclusions.....</b>	<b>12</b>
4.1 Prehistoric.....	12
4.2 Roman.....	12
4.3 Medieval.....	12
4.4 Post-medieval.....	12
4.5 Recommendations.....	12
<b>Appendix A. Trench Descriptions and Context Inventory.....</b>	<b>13</b>
<b>Appendix B. Environmental Reports.....</b>	<b>25</b>
B.1 Environmental samples.....	26
B.2 Introduction.....	26
B.3 Methodology.....	26
<b>Appendix C. Bibliography.....</b>	<b>27</b>
<b>Appendix D. OASIS Report Form.....</b>	<b>28</b>

---

### List of Figures

- Fig. 1 Site location map  
Fig. 2 Trench layout showing geophysical survey interpretation and all features  
Fig. 3 Trenches 1-3 & 7-9  
Fig. 4 Trenches 4-6, 13-16, 22 & 23  
Fig. 5 Trenches 24-28  
Fig. 6 Trenches 17-21, 30-32  
Fig. 7 Section drawings

### List of Plates

- Plate 1 Extensions to Trench 20 showing natural features **87** and **85** (excavated), looking northeast.  
Plate 2 Ring ditch **102**, Trench 27, looking north.  
Plate 3 Possible Roman ditch **63** and possible posthole **67**, Trench 17, looking south.  
Plate 4 Roman ditch **89**, Trench 28, looking south.  
Plate 5 Roman hollow way **50** and boundary ditch **48**, Trench 32, looking southwest.

### List of Tables

Environmental Samples.....	17
----------------------------	----

## 1 INTRODUCTION

### 1.1 Location and scope of work

- 1.1.1 An archaeological evaluation was conducted on Land at Muncey's Farm, Melbourn
- 1.1.2 This archaeological evaluation was undertaken in accordance with a Brief issued by Kasia Gdaniec of Cambridgeshire County Council (CCC), supplemented by a Specification prepared by OA East (Spoerry 2014).
- 1.1.3 The work was designed to assist in defining the character and extent of any archaeological remains within the proposed redevelopment area, in accordance with the guidelines set out in *National Planning Policy Framework* (Department for Communities and Local Government March 2012). The results will enable decisions to be made by CCC, on behalf of the Local Planning Authority, with regard to the treatment of any archaeological remains found.
- 1.1.4 The site archive is currently held by OA East and will be deposited with the appropriate county stores in due course.

### 1.2 Geology and topography

- 1.2.1 The site lies on geology of Chalk of the Holywell Nodular Chalk Formation with no superficial deposits recorded (BGS 2014). The majority of the site is undulating fields up to 51.mOD in the centre, dropping down to 46 - 47mOD in the west and north.
- 1.2.2 No springs are known in the immediate area (being associated with the Melbourn Rock formation 1.5km to the northeast). The water table is some 10m below the surface in the land owner's well (Swannell, pers. comm.).

### 1.3 Archaeological and historical background

- 1.3.1 Detailed archaeological and historical background is provided in a recent desk-based assessment (Smalley 2014). This identified a high potential for prehistoric archaeological remains, a low potential for the Roman period while for the Saxon, Medieval and Post-Medieval periods, agricultural activity of limited significance was expected (*ibid.*).

### 1.4 Acknowledgements

- 1.4.1 The work was commissioned by Will Bedford of CgMs on behalf of Lightsource Renewable Energy Ltd. with the permission of the land owners, Mr & Mrs. Swannell. Machine excavation and backfilling was performed by Darren Hubbard of Anthill Plant Hire. Site excavation and recording was undertaken by Andy Greef, Katherine Hamilton, Emily Abrehart, Bronagh Quinn, Rebecca Pridmore, Petra Weschenfelder and the author.

## 2 AIMS AND METHODOLOGY

### 2.1 Aims

- 2.1.1 The objective of this archaeological evaluation was to determine as far as reasonably possible the presence/absence, location, nature, extent, date, quality, condition and significance of any surviving archaeological deposits within the development area.

### 2.2 Methodology

- 2.2.1 Machine excavation was carried out under constant archaeological supervision with a tracked 360-type excavator using a 2m toothless ditching bucket.
- 2.2.2 The site survey was carried out using Leica 1200 RTK GPS.
- 2.2.3 Ploughsoils were bucket sampled for finds. Spoil, exposed surfaces and features were scanned with a metal detector. All metal-detected and hand-collected finds were retained for inspection, other than those which were obviously modern. Prehistoric pottery was dated by Sarah Percival, and the Roman pottery by Alice Lyons.
- 2.2.4 All archaeological features and deposits were recorded using OA East's *pro-forma* sheets. Trench locations, plans and sections were recorded at appropriate scales and colour and monochrome photographs were taken of all relevant features and deposits.
- 2.2.5 Three environmental samples were taken.
- 2.2.6 Conditions were dry, varying from sunny to thick fog.

## 3 RESULTS

### 3.1 Introduction

3.1.1 As several Trenches crossed the same landscape features, targeted by Geophysical survey (Stratascan), results are discussed by date of features, beginning with natural features and through prehistoric, Roman, Medieval and post-Medieval features. Archaeological features are given cut numbers in bold. Natural features are generally un-numbered but have a cut number where they were tested by excavation. Trench plans are shown in Figures 2-5.

3.1.2 Trenches 10, 11 & 12 were not excavated due to *in situ* crop on that part of the field.

### 3.2 Trenches with no archaeology

3.2.1 Trenches 5, 13, 14, 15, 16, 18, 19, 22, 25, 23 and 29 revealed no archaeological features. Trench 13 had been moved 5m west to avoid the crop.

### 3.3 Natural Hollows

3.3.1 A number of natural hollows were identified on the higher ground on site. Only one produced archaeological finds but also showed extensive evidence of rabbit burrowing.

#### **Trench 6**

3.3.2 A natural hollow (**56**) was excavated here, partially by machine, then by hand. It measured 9m across and 0.8m deep (below plough soil) with gently sloping irregular sides. It was filled (**57**) with a mid-brown sandy silt which contained no finds.

3.3.3 Two metres to the north, of this was a natural linear feature with irregular sides, 0.75m across and 0.1m deep. Further north a small tree throw was excavated (**54**), producing no finds.

3.3.4 From the geophysical survey this larger hollow and linear feature resembled (potentially) a watering hole in the corner of a rectilinear enclosure. However, the features here appeared to be natural. Furthermore, the eastern continuation of the putative northern boundary into Trench 7 had a very different form, also appearing to be natural. The western boundary would continue into Trench 5, however this trench contained no archaeological features, so it is likely the north-south feature on the geophysical survey is just part of the plough soil trends – nothing was apparent in the sub soil in section.

#### **Trench 7**

3.3.5 A broad natural hollow (**8**) was excavated here. It had been identified by geophysical survey as a potential linear feature continuing from Trench 6. However, its gentle edges and shallow profile (0.4m deep by approximately 4m wide), absence of finds and uniform mid grey-reddish brown fill (**10**) suggest it was a natural feature. Furthermore it bears little resemblance to the small, irregular linear feature it would have aligned with in Trench 6.

#### **Trench 23**

3.3.6 Trench 23 was moved approximately 5m south of its planned position due to the sugarbeet crop. A small natural hollow at least 6m across and 0.4m deep was excavated. This contained a fine mid brown sandy silt, similar to the subsoil. Small sherds of abraded Roman pottery of 2nd century date were retrieved from the surface of this but these appeared to be intrusive from the subsoil above.



### **Trench 24**

- 3.3.7 A sub-rectangular feature (**91**) was revealed at 8m by at least 2m in plan with sides sloping gently to a flat base. Two 1m test pits were excavated by hand through its fill (92-93) which consisted of a mid-dark greyish brown friable silt. Pieces of Roman pottery of 2nd to 4th-century date, some heavily abraded, were retrieved from both test pits (one at the western edge, one near the centre).
- 3.3.8 The friable fill resembled the fills of larger natural hollows excavated 1.5km to the northeast on a recent evaluation at new Road, Melbourn. Those are thought to be of peri-glacial origin, containing early prehistoric buried soils (Ladd 2014). However, in this instance there were no prehistoric finds, and no prehistoric buried soils. The base of the feature was irregular but generally flat with gently curving sides. There has been considerable burrowing throughout the fill, potentially introducing later finds.

### **3.4 Colluvium**

- 3.4.1 The western part of the evaluation area formed a slight valley, causing some superficial geological effects. It is possible that a slight channel had resulted from rain run-off along the lower contour, filled with dark friable silts (73) up to 0.4m thick and 15m across. The line of this would run from southeast down to the northwest. Colluvial silts coming down from the northeast have contributed to this infill.

#### **Trenches 17, 20, 21, 30**

- 3.4.2 Four trenches were targeted across this feature as it had been identified by geophysical survey. No archaeological features cut across the colluvium so it was excavated by machine. It was bucket sampled to test for finds as well as hand test pitted at the eastern end of Trench 17 but it produced no finds in any trench.

#### **Trenches 20, 20a, 20b**

- 3.4.3 Associated with this natural feature, two sub-rectangular pits (**85, 87**) were excavated in Trench 20. These gave the appearance of being potentially part of a causewayed ditch, although no finds were recovered. The trench was subsequently extended around these with two additional double-width trenches excavated either side across the expected line of any extension.
- 3.4.4 The pit-like features appeared less regular as a greater area was exposed. Pit **87** was excavated fully, measuring 1.8m x 0.6m x 0.2m deep. A section of pit **85** was excavated showing it to be 0.22m deep and 1m wide, however its full extent in plan was much less regular to the west. Two more approximately sub-rectangular features were revealed either side of **85** which were much shallower. The fills of all were reddish brown sandy silts with frequent chalk pieces (upto ~20mm), very much like the transition between the subsoil (2) and the clean natural chalk. These pits therefore are most likely to be of natural origin, perhaps caused by vegetation or periglacial in nature.
- 3.4.5 The additional trenches (20a to the west, 20b to the east) were completely devoid of archaeology.

### **3.5 Bronze Age Ring Ditch**

#### **Trench 27**

- 3.5.1 A ring ditch is listed by the HER (CHER 08601) in this area. This is located on a 100m grid line so in fact probably refers to the ring ditch identified on geophysics and excavated in Trench 27 (Fig 5).

- 3.5.2 Both sides of the ring ditch were excavated in the trench, proving to be 1.8m (eastern side: **98**) to 3.2m wide (western side: **102**). The western side had two recognisable fills (104, 108, Section 37), the later fill containing sherds of a single vessel of Later Iron Age date (Sarah Percival pers. comm.). The diameter of the ring ditch is 18m.

### 3.6 Roman Hollow Way

#### *Trenches 31 & 32*

- 3.6.1 Both these trenches were targeted over a faint linear feature identified by geophysical survey. Excavation in Trench 32 revealed these to be a narrow ditch (**48** 0.6m wide, 0.2m deep) and a wide, shallow hollow way (**50**; 6m across and 0.4m deep with a wheel rut in the base) running west-southwest to east-northeast.
- 3.6.2 The ditch fill (49) was a mid-brown firm silt. The hollow way was filled with a mid-dark brown very soft silt (51). Pottery from the hollow way was all Romano-British, quite heavily abraded but with several fragments sometimes coming from the same vessel. Spot dating has several fabrics, including some fine wares, overlapping in the 2nd century (Alice Lyons pers. comm.). Sherds of a red ware vessel may well be from Harston and as such would be significantly later with a 4th-century date (*ibid*, Pullinjer 1982).
- 3.6.3 In Trench 31, the hollow way and ditch were the same widths but crossed at an oblique angle. They were not excavated here.
- 3.6.4 The ditch would appear to function as a boundary for a trackway which then developed into a hollow way.

### 3.7 Roman/Medieval Field Ditches

#### *Trenches 3, 4, 17, 28*

- 3.7.1 Several trenches contained small ditches, one of which produced sherds of Roman pottery. Most are aligned just off north-south, parallel with agricultural trends detected by geophysical survey (but almost perpendicular to the modern plough lines and the medieval trends).
- 3.7.2 Ditch **40** in Trench 3 is likely part of this system. It was 0.9m wide and 0.25m deep but produced no finds.
- 3.7.3 Ditch **58/60** in Trench 4 produced no pottery but sits on this alignment. It was 0.6m wide by 0.3m deep running from the southern end of the trench and terminating after 9.5m. Its fill (59/61) was a mid brown sandy silt.
- 3.7.4 In Trench 17, a similarly filled ditch (**63**) followed a different alignment, closer to north-south. Again the fill (64) produced no finds, so dating is unclear. This was accompanied by an undated possible post hole 0.3m across (**67**), again with a similar fill (68)
- 3.7.5 Trench 28 revealed a second ditch terminus on the same alignment as **58/60**, Ditch **89**, 0.5m wide and 0.45m deep with steep sides and a flat but irregular base. The trench had been extended 2m south, revealing a 2.4m length of the ditch and terminus. The fill was also a mid brown sandy silt and produced Roman pot sherds dating from variously: the late 1st-4th century; the 3rd-mid-4th century; and late 2nd-4th century.
- 3.7.6 The abraded condition of this pottery does not preclude a medieval date for these ditches. However, the medieval system appears to be aligned on an east-west ploughing scheme, so a Roman date seems more likely.

### 3.8 Medieval – Post-medieval Headland and Trackway:

- 3.8.1 The geophysical survey identified a pair of parallel ditches 7-8m apart close to the eastern boundary of the site (and the modern gravel trackway). Four trenches were targeted across these, although one could not be excavated due to crop on the field. At its northern end it turns closer to north (Trench 1) but is otherwise straight.
- 3.8.2 The ditches clearly bound a trackway. On the ground this feature was evidently associated with a broad earthwork running its entire length. Some plough trends from the geophysical survey are aligned perpendicular to the earthwork so it is assumed to be a headland of medieval date (although no trenches revealed furrows). The headland material (62), a dark grey sandy silt was overlain by subsoil (2) and topsoil (1) which were also noticeably thicker across the bank than elsewhere, at 0.3m and 0.2m respectively.

#### *Trench 1*

- 3.8.3 In addition to a tree throw (**30**) with no finds, Trench 1 revealed two (west: **12** & east: **14**) ditches on the lines expected from the geophysics. These were both 0.6m wide and 0.1m deep through the natural chalk. There was no clear relationship with the headland material which was hard to distinguish from the subsoil.
- 3.8.4 In addition, two other ditches lay to the west, one diverging from the headland alignment (**16**) and another nearly perpendicular to that (**20**). On the raw geophysical survey plot, Ditch **16** may represent a divergence of the trackway, although it takes a different form from the trackway ditches: 1.4m wide and 0.3m deep. Ditch **20** was 1m wide and 0.1m deep.

#### *Trench 9*

- 3.8.5 In this trench, a smaller ditch (**28**) aligned with the trackway appeared to lie below the headland material (62). The ditch was 0.6m wide and only 0.1m deep. Predating the headland material, this may be a relict Roman field ditch or an earlier Medieval field boundary prior to the build up of the headland.
- 3.8.6 Three further ditches were recorded cutting through the headland material. The outer two correspond with the trackway ditches in Trench 1 (**26=14** and **22=12**) although both appear wider here at 2.2m (**26**) and 3.6m across (**22**). The third ditch, lying between these two is 1.4m wide (**24**). The wider outer ditches here could possibly represent the erosion of hollow ways along the track line, although the geophysical survey does indicate that the side ditches continue straight without crossing each other.

#### *Trench 26*

- 3.8.7 Further south in Trench 26, the two ditches were recorded. The western one (**94=12**) was 1.4m wide with a flat base while the eastern one (**96=14**) was 0.7m wide by 0.1m deep also with a flat base. The headland material (62) was cut by Ditch **94** but could not be clearly seen over Ditch **96** with only slightly thicker subsoil here.
- 3.8.8 There were no finds from these track ditches but their close association with the headland places them in the Medieval period. In most cases it appears the two main track ditches cut the headland material; so the track was established on top of the extant headland, with only the bases of the ditches cutting into the chalk, possibly making them post-medieval. This landscape system was abandoned with (or before) the establishment of the modern system by enclosure in the 1830s.

### 3.9 1830s Enclosure Ditches and Trackway

3.9.1 The enclosure map is examined in the desk-based assessment for the site (Smalley 2014). This shows a rectilinear system with a main north-south boundary and east-west field allotments. These boundaries have been traced as green lines on the trench plans. Although offset by around 50m to the west, these lines correspond with linear features traced in red from the geophysical survey (Figures 2 & 3).

#### *Trench 2*

3.9.2 Three ditches were recorded in this trench, varying in size (from west: **34** 0.6m by 0.2m; **36** 1m by 0.15m; **38** 0.9m by 0.3m). They are all on the alignment of the enclosure boundary. The western two form a pair 2m apart, 10m from the third.

#### *Trench 8*

3.9.3 Again, three ditches were recorded here. Their sizes differ from Trench 2 but not their spacing. The western pair are small (**77** 0.8m by 0.2m and **79** 1.8m by 0.3m with an irregular base. The eastern ditch (**81**) was very broad, funneling out to around 4m wide with its deeper portion being v-shaped, 1.4m wide and was 0.9m deep (Section 23). Its lower fill (**82**) of reddish brown sandy silt with frequent chalk pieces appeared to be slump from a possible bank to the east.

### 3.10 Finds Summary

3.10.1 Sherds of a single Late Iron Age vessel (Sarah Percival, pers. comm.) were retrieved from the fill of the ring ditch in Trench 26. Roman pottery was found in features across the site. These sherds were abraded but some were of fine wares and likely came from a variety of sources in the region and potentially from a broad date range (Alice Lyons, pers. comm.).

### 3.11 Environmental Summary

3.11.1 Three bulk samples were taken from features within the excavated areas at Muncsey's Farm, Melbourn in order to assess the quality of preservation of plant remains and their potential to provide useful data as part of further archaeological investigations.

3.11.2 All of the samples were devoid of plant remains other than modern rootlets. Molluscs present are typical of chalk grassland and do not show differentiation between samples. The lack of preservation of plant remains is likely to indicate that this area was not occupied.

## 4 DISCUSSION AND CONCLUSIONS

### 4.1 Prehistoric

- 4.1.1 The prehistoric activity on site appears to be confined to the ring ditch, likely a barrow of Bronze Age date, and the Later Iron Age vessel deposited within its upper fills. The limited surviving ploughsoil here suggests little chance of the preservation of secondary cremations other than within the ditch itself. Trench 26 crossed just south of the centre of the ring so would not have exposed central features.
- 4.1.2 There was a complete lack of prehistoric finds across the rest of the site, including from probable buried soils in natural features.

### 4.2 Roman

- 4.2.1 The evaluation provided some evidence for Roman agriculture in the form of small ditches aligned close to north-south. The variety as well as quality (though abraded) of pottery retrieved from these features point to a settlement of some status and longevity nearby (Alice Lyons, pers. comm.), although not within the evaluation area. The track way crossing the south of the area is visible on aerial images continuing west to Royston where it likely joined Ermine St. It would continue east to a point just south or east of Muncey's Farm, although nothing is visible on Google Earth's APs.

### 4.3 Medieval

- 4.3.1 The headland of a medieval ploughing system survives as an earthwork on the site. This is cut by ditches delineating a track way. The earthwork has likely been flattened and widened by post-medieval ploughing.

### 4.4 Post-medieval

- 4.4.1 The 1830s enclosure map shows the establishment of the modern field boundaries, although it appears to be inaccurate in portraying sub-divisions. The north-south boundary through the northern field at some point became a track way whose ditches were visible in two trenches.

### 4.5 Recommendations

- 4.5.1 Recommendations for any future work based upon this report will be made by the County Archaeology Office.

## APPENDIX A. TRENCH DESCRIPTIONS AND CONTEXT INVENTORY

Trench 1						
<b>General description</b>					<b>Orientation</b>	E-W
Northernmost trench in north field. Contains several undated ditches, likely to be field boundaries or possibly part of the trackway running through the eastern end of the site. Natural hollow against the north-facing baulk also present.					<b>Avg. depth (m)</b>	0.4
					<b>Width (m)</b>	2.10
					<b>Length (m)</b>	59
Contexts						
context no	type	Width (m)	Depth (m)	comment	finds	date
1	Layer	-	0.25	Topsoil	-	-
2	Layer	-	0.15	Subsoil	-	-
12	Cut	0.9	0.1	Ditch	-	-
13	Fill	-	-	Fill of <b>12</b> , mid greyish brown sandy silt	-	-
14	Cut	0.82	0.08	Ditch	-	-
15	Fill	-	-	Fill of <b>14</b> , mid greyish brown sandy silt	-	-
16	Cut	1.4	0.32	Ditch	-	-
17	Fill	-	-	Fill of <b>16</b> , light greyish brown sandy silt	-	-
18	Cut	-	0.22	Natural Hollow	-	-
19	Fill	-	-	Fill of <b>18</b> , light greyish brown sandy silt	-	-
20	Cut	0.92	0.1	Ditch	-	-
21	Fill	-	-	Fill of <b>21</b> , mid greyish brown sandy silt	-	-
		-	-	Natural - Chalk	-	-

Trench 2						
<b>General description</b>					<b>Orientation</b>	NE-SW
Trench located at NW side of north field. Contains two N-S ditches which are possibly part of a wide trackway, one of which has an associated gully running parallel to it. A small pit-like feature is evident at the SW end of the trench. All features are undated.					<b>Avg. depth (m)</b>	0.36
					<b>Width (m)</b>	2.1
					<b>Length (m)</b>	50
Contexts						
context no	type	Width (m)	Depth (m)	comment	finds	date
1	Layer	-	0.3	Topsoil	-	-
2	Layer	-	0.8	Subsoil – only apparent at SW end	-	-
32	Cut	0.42	0.16	Post hole/Pit	-	-
33	Fill	-	-	Fill of <b>32</b> , mid brown sandy	-	-

				silt		
34	Cut	0.66	0.12	Gully	-	-
35	Fill	-	-	Fill of <b>34</b> , mid brown sandy silt	-	-
36	Cut	0.7	0.18	Ditch	-	-
37	Fill	-	-	Fill of <b>36</b> , mid brown sandy silt	-	-
38	Cut	0.9	0.26	Ditch	-	-
39	Fill	-	-	Fill of <b>38</b> , mid brown sandy silt	-	-
		-	-	Natural – Chalk with flint	-	-

### Trench 3

<b>General description</b>	<b>Orientation</b>	NE-SW
Trench located at west side of north field. Single large boundary ditch aligned NW-SE across trench visible towards SW end of trench. Two small post-hole like features also present. Modern plough-scarring evident. All features contained no dating evidence.	<b>Avg. depth (m)</b>	0.35
	<b>Width (m)</b>	2.1
	<b>Length (m)</b>	48

### Contexts

context no	type	Width (m)	Depth (m)	comment	finds	date
1	Layer	-	0.3	Topsoil	-	-
2	Layer	-	0.04	Subsoil	-	-
40	Cut	1.1	0.24	Ditch	-	-
41	Fill	-	-	Fill of <b>40</b> , mid brown sandy silt	-	-
42	Cut	0.25	0.06	Post-hole	-	-
43	Fill	-	-	Fill of <b>42</b> , mid brown sandy silt	-	-
44	Cut	0.3	0.17	Pit/Post-hole	-	-
45	Fill	-	-	Fill of <b>44</b> , mid brown sandy silt	-	-
		-	-	Natural - Chalk	-	-

### Trench 4

<b>General description</b>	<b>Orientation</b>	NW-SE
Trench located at western end of north field. Single ditch runs 9.65m in from the SE end where it then terminates. Modern plough scars evident.	<b>Avg. depth (m)</b>	0.42
	<b>Width (m)</b>	2.1
	<b>Length (m)</b>	52

### Contexts

context no	type	Width (m)	Depth (m)	comment	finds	date
1	Layer	-	0.33	Topsoil	-	-
2	Layer	-	0.07	Subsoil – only evident at	-	-

				SE end		
58	Cut	0.65	0.04	Terminal end of Ditch	-	-
59	Fill	-	-	Fill of <b>58</b> , mid brown sandy silt	-	-
60	Cut	0.58	0.14	Ditch	-	-
61	Fill	-	-	Fill of <b>60</b> , mid brown sandy silt	-	-
		-	-	Natural - Chalk	-	-

Trench 5						
<b>General description</b>				<b>Orientation</b>		E-W approx.
Trench located in SE corner of north field. Devoid of archaeology, topsoil above chalk natural. Modern plough scars evident.				<b>Avg. depth (m)</b>		0.32
				<b>Width (m)</b>		2.1
				<b>Length (m)</b>		50.4
Contexts						
context no	type	Width (m)	Depth (m)	comment	finds	date
1	Layer	-	0.31	Topsoil	-	-
		-	-	Natural - Chalk	-	-

Trench 6						
<b>General description</b>				<b>Orientation</b>		N-S
Trench located towards SW end of north field. Large natural hollow in centre of trench extending to east and west beyond trench edges. Single small pit at north end of trench.				<b>Avg. depth (m)</b>		0.56
				<b>Width (m)</b>		2.1
				<b>Length (m)</b>		50
Contexts						
context no	type	Width (m)	Depth (m)	comment	finds	date
1	Layer	-	0.24	Topsoil	-	-
2	Layer	-	0.12	Subsoil	-	-
54	Cut	1	2.7	Pit	-	-
55	Fill	-	-	Fill of <b>54</b> , mid brown sandy silt	-	-
56	Cut	-	0.46	Natural Hollow	-	-
57	Fill	-	-	Fill of <b>56</b> , mid brown sandy silt	Pottery	Roman
		-	-	Natural Chalk and flint	-	-

Trench 7						
<b>General description</b>				<b>Orientation</b>		N-S
Trench contains two tree throws and two truncated ditches on the				<b>Avg. depth (m)</b>		



same alignment. Located in the centre of north field.					<b>Width (m)</b>	2.3
					<b>Length (m)</b>	50
<b>Contexts</b>						
context no	type	Width (m)	Depth (m)	comment	finds	date
1	Layer	-		Topsoil	-	-
2	Layer	-		Subsoil	-	-
3	Cut			Tree throw	-	-
4	Fill	-	-	Fill of <b>3</b> , mid yellowish brown sandy silt	-	-
5	Cut			Tree throw	-	-
6	Fill	-	-	Fill of <b>5</b> , mid yellowish brown sandy silt	-	-
7	Cut	3.2	0.2	Ditch	-	-
8	Cut	0.8	0.2	Ditch	-	-
9	Fill	-	-	Lower fill of <b>7</b> and <b>8</b> , mid yellowish brown sandy silt	Pottery	Roman
10	Fill	-	-	Upper fill of <b>7</b> and <b>8</b> , mid greyish brown sandy silt	-	-
11	Layer	-		Subsoil – given second number by accident	-	-
		-	-	Natural - chalk		

<b>Trench 8</b>						
<b>General description</b>  Two ditches, one with a gully associated with it are present in this trench. All three features are undated but likely correspond to similar ones in Trench 2. Trench is located to west of north field.					<b>Orientation</b>	NE-SW
					<b>Avg. depth (m)</b>	0.4
					<b>Width (m)</b>	2.1
					<b>Length (m)</b>	50.5
<b>Contexts</b>						
context no	type	Width (m)	Depth (m)	comment	finds	date
1	Layer	-		Topsoil	-	-
77	Cut	0.7	0.14	Gully	-	-
78	Fill	-	-	Fill of <b>77</b> , mid reddish brown sandy silt	-	-
79	Cut	1.3	0.25	Ditch	-	-
80	Fill	-	-	Fill of <b>79</b> , mid reddish brown sandy silt	-	-
81	Cut	1.6	0.7	Ditch	-	-
82	Fill	-	-	Lower fill of <b>81</b> , mid reddish brown sandy silt	-	-
84	Fill	-	-	Upper fill of <b>81</b> , mid greyish brown sandy silt	-	-

		-	-	Natural - chalk	-	-
--	--	---	---	-----------------	---	---

Trench 9						
<b>General description</b>				<b>Orientation</b>	NE-SW	
Several ditches, similar to those in Trench 1, are present. These, though undated, are likely to be field boundaries or part of the trackway running through the eastern end of the site. Three of these ditches cut through a headland visible in the surrounding field. Trench located at east corner of north field.				<b>Avg. depth (m)</b>	0.41	
				<b>Width (m)</b>	2.1	
				<b>Length (m)</b>	50	
Contexts						
context no	type	Width (m)	Depth (m)	comment	finds	date
1	Layer	-	0.31	Topsoil	-	-
2	Layer	-	0.1	Subsoil	-	-
22	Cut	3.7	0.12	Ditch - trackway	-	-
23	Fill	-	-	Fill of <b>22</b> , mid greyish brown sandy silt	-	-
24	Cut	1.4	0.14	Ditch	-	-
25	Fill	-	-	Fill of <b>24</b> , mid greyish brown sandy silt	-	-
26	Cut	2.5	0.3	Ditch	-	-
27	Fill	-	-	Fill of <b>26</b> , mid greyish brown sandy silt	-	-
28	Cut	0.68	0.1	Ditch - boundary	-	-
29	Fill	-	-	Fill of <b>28</b> , mid greyish brown sandy silt	-	-
62	Layer	-	0.15	Headland	-	-
		-	-	Natural - chalk	-	-

Trench 13						
<b>General description</b>				<b>Orientation</b>	NW-SE	
Devoid of archaeology, topsoil and subsoil above chalk natural. Trench located to north of south field.				<b>Avg. depth (m)</b>	0.31	
				<b>Width (m)</b>	2.1	
				<b>Length (m)</b>	49.3	
Contexts						
context no	type	Width (m)	Depth (m)	comment	finds	date
1	Layer	-	0.2	Topsoil	-	-
2	Layer	-	0.08	Subsoil	-	-
		-		Natural - Chalk	-	-

Trench 14						
<b>General description</b>				<b>Orientation</b>	NE-SW	

Devoid of archaeology, topsoil and subsoil above chalk natural. Trench located to north of south field.	<b>Avg. depth (m)</b>	0.35				
	<b>Width (m)</b>	2.1				
	<b>Length (m)</b>	49.5				
<b>Contexts</b>						
<b>context no</b>	<b>type</b>	<b>Width (m)</b>	<b>Depth (m)</b>	<b>comment</b>	<b>finds</b>	<b>date</b>
1	Layer	-	0.23	Topsoil	-	-
2	Layer	-	0.08	Subsoil	-	-
		-	-	Natural - chalk	-	-

<b>Trench 15</b>						
<b>General description</b>				<b>Orientation</b>		NW-SE
Devoid of archaeology, topsoil and subsoil above chalk natural. Natural features observed but not recorded. Trench located to north of south field.				<b>Avg. depth (m)</b>		0.36
				<b>Width (m)</b>		2.1
				<b>Length (m)</b>		47.7
<b>Contexts</b>						
<b>context no</b>	<b>type</b>	<b>Width (m)</b>	<b>Depth (m)</b>	<b>comment</b>	<b>finds</b>	<b>date</b>
1	Layer	-	0.25	Topsoil	-	-
2	Layer	-	0.1	Subsoil	-	-
		-	-	Natural - chalk	-	-

<b>Trench 16</b>						
<b>General description</b>				<b>Orientation</b>		NW-SE
Devoid of archaeology, topsoil and subsoil above chalk natural. Trench located to the middle of south field.				<b>Avg. depth (m)</b>		0.27
				<b>Width (m)</b>		2.1
				<b>Length (m)</b>		48
<b>Contexts</b>						
<b>context no</b>	<b>type</b>	<b>Width (m)</b>	<b>Depth (m)</b>	<b>comment</b>	<b>finds</b>	<b>date</b>
1	Layer	-	0.26	Topsoil	-	-
2	Layer	-	0.03	Subsoil – only visible at NW end of trench	-	-
		-	-	Natural - chalk	-	-

<b>Trench 17</b>						
<b>General description</b>				<b>Orientation</b>		NE-SW
Single ditch aligned approximately N-S across trench with two post-holes directly to the east and a single post-hole directly to the west. These are cut by modern plough scars. Colluvium also present. Trench located to SW of south field.				<b>Avg. depth (m)</b>		0.37
				<b>Width (m)</b>		2.1
				<b>Length (m)</b>		48.5
<b>Contexts</b>						

context no	type	Width (m)	Depth (m)	comment	finds	date
1	Layer	-	0.3	Topsoil	-	-
2	Layer	-	0.25	Subsoil	-	-
63	Cut	0.5	0.14	Ditch	-	
64	Fill	-	-	Fill of <b>63</b> , mid greyish brown sandy silt	CBM, flint	
65	Cut	0.18	0.03	Post-hole	-	-
66	Fill	-	-	Fill of <b>65</b> , mid greyish brown sandy silt	-	-
67	Cut	0.34	0.13	Post-hole	-	-
68	Fill	-	-	Fill of <b>67</b> , mid brownish grey sandy silt	-	-
69	Cut	0.08	0.06	Plough scar	-	-
70	Fill	-	-	Fill of <b>69</b> , mid greyish brown sandy silt	Pottery/CBM	Roman
71	Cut	0.34	0.14	Post-hole	-	-
72	Fill	-	-	Fill of <b>71</b> , mid greyish brown sandy silt	-	-
73	Layer	-	0.35	Colluvium	-	-
		-	-	Natural - chalk	-	-

Trench 18						
<b>General description</b>				<b>Orientation</b>		NE-SW
Devoid of archaeology, topsoil above chalk natural. No subsoil present. Trench located to the west of south field.				<b>Avg. depth (m)</b>		0.35
				<b>Width (m)</b>		2.1
				<b>Length (m)</b>		50
				<b>Contexts</b>		
context no	type	Width (m)	Depth (m)	comment	finds	date
1	Layer	-	0.35	Topsoil	-	-
		-	-	Natural - chalk	-	-

Trench 19						
<b>General description</b>				<b>Orientation</b>		NW-SE
Devoid of archaeology, topsoil above chalk natural. No subsoil present. Trench located to the west of south field.				<b>Avg. depth (m)</b>		0.4
				<b>Width (m)</b>		2.1
				<b>Length (m)</b>		50
				<b>Contexts</b>		
context no	type	Width (m)	Depth (m)	comment	finds	date
1	Layer	-	0.4	Topsoil	-	-

		-	-	Natural - chalk	-	-
--	--	---	---	-----------------	---	---

Trench 20						
<b>General description</b>				<b>Orientation</b>	N-S	
Single ditch, aligned NE-SW, terminating in trench at SW end, also a possible segmented ditch to the north of this on the same alignment. Colluvium present at northern end. Trench located to SW of south field.				<b>Avg. depth (m)</b>	0.42	
				<b>Width (m)</b>	2.1	
				<b>Length (m)</b>	49	
Contexts						
context no	type	Width (m)	Depth (m)	comment	finds	date
1	Layer	-	0.33	Topsoil	-	-
2	Layer	-	0.1	Subsoil	-	-
85	Cut	0.95	0.22	Ditch terminus	-	-
86	Fill	-	-	Fill of <b>85</b> , mid greyish brown sandy silt	-	-
87	Cut	0.6	0.19	Natural feature	-	-
88	Fill	-	-	Fill of <b>87</b> , mid greyish brown sandy silt	-	-
73	Layer	-	0.3	Colluvium	-	-
		-	-	Natural - chalk	-	-

Trench 20a						
<b>General description</b>				<b>Orientation</b>	N-S	
Extension of trench 20 to east. Devoid of archaeology, topsoil and subsoil above chalk natural. Trench located to the SW of south field.				<b>Avg. depth (m)</b>		
				<b>Width (m)</b>	4	
				<b>Length (m)</b>	10	
Contexts						
context no	type	Width (m)	Depth (m)	comment	finds	date
1	Layer	-	-	Topsoil – dimensions not recorded	-	-
2	Layer	-	-	Subsoil – dimensions not recorded	-	-
		-	-	Natural - chalk	-	-

Trench 20b						
<b>General description</b>				<b>Orientation</b>		
Extension of trench 20 to west. Devoid of archaeology, topsoil and subsoil above chalk natural. Trench located to the SW of south field.				<b>Avg. depth (m)</b>		
				<b>Width (m)</b>		
				<b>Length (m)</b>		
Contexts						

context no	type	Width (m)	Depth (m)	comment	finds	date
1	Layer	-	-	Topsoil – dimensions not recorded	-	-
2	Layer	-	-	Subsoil – dimensions not recorded	-	-
		-	-	Natural - chalk	-	-

Trench 21						
<b>General description</b>				<b>Orientation</b>	E-W	
Devoid of archaeology, topsoil and subsoil above chalk natural. Colluvium at west end of trench. Trench located at west side of south field.				<b>Avg. depth (m)</b>	0.4	
				<b>Width (m)</b>	2.1	
				<b>Length (m)</b>	50	
<b>Contexts</b>						
context no	type	Width (m)	Depth (m)	comment	finds	date
1	Layer	-	0.25	Topsoil	-	-
2	Layer	-	0.1	Subsoil	-	-
73	Layer	-	0.1	Colluvium	-	-
		-	-	Natural - chalk	-	-

Trench 22						
<b>General description</b>				<b>Orientation</b>	NE-SW	
Devoid of archaeology, topsoil and subsoil above chalk natural. Trench located in the middle of south field.				<b>Avg. depth (m)</b>	0.32	
				<b>Width (m)</b>	2.1	
				<b>Length (m)</b>	59.6	
<b>Contexts</b>						
context no	type	Width (m)	Depth (m)	comment	finds	date
1	Layer	-	0.25	Topsoil	-	-
2	Layer	-	0.07	Subsoil	-	-
		-	-	Natural - chalk	-	-

Trench 23						
<b>General description</b>				<b>Orientation</b>	NE-SW	
Devoid of archaeology, topsoil and subsoil above chalk natural. Natural features apparent but not recorded. Trench located in the middle of south field.				<b>Avg. depth (m)</b>	0.3	
				<b>Width (m)</b>	2.1	
				<b>Length (m)</b>	51.4	
<b>Contexts</b>						
context no	type	Width (m)	Depth (m)	comment	finds	date

1	Layer	-	0.19	Topsoil	-	-
2	Layer	-	0.1	Subsoil	-	-
		-	-	Natural - chalk	-	-

Trench 24						
<b>General description</b>					<b>Orientation</b>	NE-SW
Large feature, originally thought to be a quarry but most likely a natural hollow, in centre of the trench. Natural feature to SW investigated but not recorded. Trench located in middle of south field.					<b>Avg. depth (m)</b>	0.4
					<b>Width (m)</b>	2.1
					<b>Length (m)</b>	50
<b>Contexts</b>						
context no	type	Width (m)	Depth (m)	comment	finds	date
1	Layer	-	0.3	Topsoil	-	-
2	Layer	-	0.1	Subsoil	-	-
91	Cut	8	1.2	Natural hollow	-	-
92	Fill	-	-	Lower fill of <b>91</b> , dark greyish brown silt	pottery	Roman
93	Fill	-	-	Upper fill of <b>91</b> , dark greyish brown silt, disturbed by rabbits	pottery	Roman
		-	-	Natural - chalk	-	-

Trench 25						
<b>General description</b>					<b>Orientation</b>	NE-SW
Devoid of archaeology, topsoil and subsoil above chalk natural. Trench located to the east of south field.					<b>Avg. depth (m)</b>	0.35
					<b>Width (m)</b>	2.1
					<b>Length (m)</b>	50.5
<b>Contexts</b>						
context no	type	Width (m)	Depth (m)	comment	finds	date
1	Layer	-	0.22	Topsoil	-	-
2	Layer	-	0.7	Subsoil	-	-
		-	-	Natural - chalk	-	-

Trench 26						
<b>General description</b>					<b>Orientation</b>	E-W
Two trackway/boundary ditches cutting through a headland horizon visible out with the trench. Trench located at south east side of south field.					<b>Avg. depth (m)</b>	0.32
					<b>Width (m)</b>	2.1
					<b>Length (m)</b>	48.5
<b>Contexts</b>						
context	type	Width	Depth	comment	finds	date

no		(m)	(m)			
1	Layer	-	0.24	Topsoil	-	-
2	Layer	-	0.08	Subsoil	-	-
94	Cut	1.4	0.4	Ditch	-	-
95	Fill	-	-	Fill of <b>94</b> , mid greyish brown sandy silt	-	-
96	Cut	0.7	0.14	Ditch	-	-
97	Fill	-	-	Fill of <b>96</b> , mid greyish brown sandy silt	-	-
		-	-	Natural - chalk	-	-

Trench 27						
<b>General description</b>				<b>Orientation</b>		E-W
One Bronze Age ring ditch cutting through the natural chalk and one posthole. Trench located at south east side of south field.				<b>Avg. depth (m)</b>		0.4
				<b>Width (m)</b>		2.1
				<b>Length (m)</b>		49.4
<b>Contexts</b>						
context no	type	Width (m)	Depth (m)	comment	finds	date
1	Layer	-	0.35	Topsoil	-	-
2	Layer	-	0.06	Subsoil	-	-
98	Cut	1.8	0.18	Ring ditch	-	-
99	Fill	-	-	Fill of <b>98</b> , mid brown silt	-	-
100	Cut	0.35	0.08	Posthole	-	-
101	Fill	-	-	Fill of <b>100</b> , mid brown silt	-	-
102	Cut	3.2	0.38	Ring ditch	-	Bronze Age
103	Fill	2.4	0.28	Upper fill of <b>102</b> , dark brown silt	Pottery	Late Iron Age
104	Fill	-	0.17	Lower fill of <b>102</b> , mid brown silt	Burnt stone	-
		-	-	Natural - chalk	-	-

Trench 28						
<b>General description</b>				<b>Orientation</b>		S-W
Ditch terminus at south end of trench. Very faint plough scaring. Trench located at south side of south field				<b>Avg. depth (m)</b>		0.34
				<b>Width (m)</b>		2.1
				<b>Length (m)</b>		52
<b>Contexts</b>						
context no	type	Width (m)	Depth (m)	comment	finds	date



1	Layer	-	0.25	Topsoil	-	-
2	Layer	-	0.08	Subsoil	-	-
89	Cut	0.5	0.2	Ditch	-	-
90	Fill	-	-	Fill of <b>89</b> , mid brown sandy silt	Pottery	Roman
		-	-	Natural – chalk	-	-

Trench 29						
<b>General description</b>				<b>Orientation</b>		E-W
Devoid of archaeology, topsoil above chalk natural. Natural features apparent but not recorded. Trench located at south west side of north field.				<b>Avg. depth (m)</b>		0.3
				<b>Width (m)</b>		2
				<b>Length (m)</b>		50
<b>Contexts</b>						
<b>context no</b>	<b>type</b>	<b>Width (m)</b>	<b>Depth (m)</b>	<b>comment</b>	<b>finds</b>	<b>date</b>
1	Layer	-	0.3	Topsoil	-	-
		-	-	Natural – chalk	-	-

Trench 30						
<b>General description</b>				<b>Orientation</b>		SW-NE
Devoid of archaeology, topsoil and subsoil above chalk natural. Natural hollow filled by colluvium. Trench located on west side of south field.				<b>Avg. depth (m)</b>		0.4
				<b>Width (m)</b>		2
				<b>Length (m)</b>		50
<b>Contexts</b>						
<b>context no</b>	<b>type</b>	<b>Width (m)</b>	<b>Depth (m)</b>	<b>comment</b>	<b>finds</b>	<b>date</b>
1	Layer	-	0.3	Topsoil	-	-
2	Layer	-	0.1	Subsoil	-	-
73	Layer	3	0.4	Colluvium	-	-
		-	-	Natural - chalk	-	-

Trench 31						
<b>General description</b>				<b>Orientation</b>		SW-NE
Small ditch perpendicular to hollow way, already excavated in Trench 32 along as parallel ditch. Trench located on west side of south field.				<b>Avg. depth (m)</b>		0.4
				<b>Width (m)</b>		2
				<b>Length (m)</b>		49
<b>Contexts</b>						
<b>context no</b>	<b>type</b>	<b>Width (m)</b>	<b>Depth (m)</b>	<b>comment</b>	<b>finds</b>	<b>date</b>
1	Layer	-	0.3	Topsoil	-	-
2	Layer	-	0.1	Subsoil	-	-

46	Cut	0.3	0.03	Ditch	-	-
47	Fill	-	-	Fill of <b>46</b> , mid brownish grey sandy silt	-	-
		-	-	Natural – chalk	-	-

Trench 32							
General description					Orientation		
Narrow boundary ditch along a trackway which then developed into a hollow way. A natural tree throw yielded no finds. Trench located on west side of south field.					N-S		
					Avg. depth (m)		0.45
					Width (m)		2
					Length (m)		49
Contexts							
context no	type	Width (m)	Depth (m)	comment	finds	date	
1	Layer	-	0.3	Topsoil	-	-	
2	Layer	-	0.15	Subsoil	-	-	
48	Cut	0.8	0.1	Ditch	-	Roman	
49	Fill	-	-	Fill of <b>48</b> , mid brown silt	Pottery	Roman	
50	Cut	6	0.4	Hollow way	-	Roman	
51	Fill	-	-	Fill of <b>50</b> , mid to dark brown silt	Pottery	Roman	
		-	-	Natural – chalk	-	-	

## APPENDIX B.

### ENVIRONMENTAL REPORTS

## B.1 Environmental samples

*By Rachel Fosberry*

## B.2 Introduction

- B.2.1 Three bulk samples were taken from features within the excavated areas at Muncey's Farm, Melbourn in order to assess the quality of preservation of plant remains and their potential to provide useful data as part of further archaeological investigations.
- B.2.2 The features sampled include two parts of a ring-ditch, one of which contains Iron Age pottery and a feature that was possibly a ditch or pit alignment but later proved to be natural.

## B.3 Methodology

- B.3.1 The total volume (up to 20 litres) of each bulk sample was processed by water flotation (using a modified Siraff three-tank system) for the recovery of charred plant remains, dating evidence and any other artefactual evidence that might be present. The floating component (flot) of the samples was collected in a 0.3mm nylon mesh and the residue was washed through 10mm, 5mm, 2mm and a 0.5mm sieve. Both flot and residues were allowed to air dry. A magnet was dragged through each residue fraction prior to sorting for artefacts. Any artefacts present were noted and reintegrated with the hand-excavated finds. The dried flots were subsequently sorted using a binocular microscope at magnifications up to x 60.

### **Results**

Sample Number	Context Number	Feature Number	Flot contents	Residue contents
3	99	98	Molluscs only	No finds
4	103	102	Molluscs only	No finds
5	88	97	Molluscs only	No finds

*Table 1: Environmental Samples*

- B.3.1 All of the samples were devoid of plant remains other than modern rootlets. Molluscs present are typical of chalk grassland and do not show differentiation between samples. The lack of preservation of plant remains is likely to indicate that this area was not occupied.

## APPENDIX C. BIBLIOGRAPHY

Ladd	2014	Archaeological Evaluation at land east of New Road, Melbourn, OAEast Report 1663
Pullinger, J., and Young, C.J.,	1982	'M11 western bypass: three sites near Cambridge 1. Obelisk Kilns, Harston' PCAS 80, 1-24.
Smalley, R.	2014	Land at Muncey's Farm, Melbourn, Cambridgeshire SG8 6DJ, CgMs Archaeological Desk-Based Assessment WB/RAJS/17574
Spoerry, P.	2014	Written Scheme of Investigation, Archaeological Evaluation, Muncey's Farm, Melbourn

## APPENDIX D. OASIS REPORT FORM

### Project Details

OASIS Number	oxfordar3_163594			
Project Name	Land at Muncey's Farm, Melbourn, Cambridgeshire			
Project Dates (fieldwork)	Start	08-09-2014	Finish	19-08-2014
Previous Work (by OA East)	No		Future Work	Unknown

### Project Reference Codes

Site Code	MELMUN14	Planning App. No.	-
HER No.	ECB4298	Related HER/OASIS No.	-

### Type of Project/Techniques Used

Prompt	Direction from Local Planning Authority - PPS 5
Development Type	Not Recorded

### Please select all techniques used:

<input type="checkbox"/> Aerial Photography - interpretation	<input type="checkbox"/> Grab-Sampling	<input type="checkbox"/> Remote Operated Vehicle Survey
<input type="checkbox"/> Aerial Photography - new	<input type="checkbox"/> Gravity-Core	<input type="checkbox"/> Sample Trenches
<input type="checkbox"/> Annotated Sketch	<input type="checkbox"/> Laser Scanning	<input type="checkbox"/> Survey/Recording Of Fabric/Structure
<input type="checkbox"/> Augering	<input type="checkbox"/> Measured Survey	<input checked="" type="checkbox"/> Targeted Trenches
<input type="checkbox"/> Dendrochronological Survey	<input type="checkbox"/> Metal Detectors	<input type="checkbox"/> Test Pits
<input type="checkbox"/> Documentary Search	<input type="checkbox"/> Phosphate Survey	<input type="checkbox"/> Topographic Survey
<input checked="" type="checkbox"/> Environmental Sampling	<input type="checkbox"/> Photogrammetric Survey	<input type="checkbox"/> Vibro-core
<input type="checkbox"/> Fieldwalking	<input type="checkbox"/> Photographic Survey	<input type="checkbox"/> Visual Inspection (Initial Site Visit)
<input type="checkbox"/> Geophysical Survey	<input type="checkbox"/> Rectified Photography	

### Monument Types/Significant Finds & Their Periods

List feature types using the [NMR Monument Type Thesaurus](#) and significant finds using the [MDA Object type Thesaurus](#) together with their respective periods. If no features/finds were found, please state "none".

Monument	Period	Object	Period
Ring ditch	Bronze Age -2.5k to -700	Pottery	Iron Age -800 to 43
Trackway	Roman 43 to 410	Pottery	Roman 43 to 410
Ditch	Roman 43 to 410	CBM	Roman 43 to 410
Barrow	Bronze Age -2.5k to -700		Select period...
Headland	Medieval 1066 to 1540		Select period...
Trackway	Medieval 1066 to 1540		Select period...

## Project Location

County	<input type="text" value="Cambridgeshire"/>	Site Address (including postcode if possible)
District	<input type="text" value="South Cambridgeshire"/>	<input type="text" value="Muncey's Farm, Melbourn&lt;br/&gt;SG8 6DJ"/>
Parish	<input type="text" value="Melbourn"/>	
HER	<input type="text" value="Cambridgeshire"/>	
Study Area	<input type="text" value="3.1 Ha"/>	National Grid Reference <input type="text" value="TL 37740 42610"/>

## Project Originators

Organisation	<input type="text" value="OA EAST"/>
Project Brief Originator	<input type="text" value="Kasia Gdaniec"/>
Project Design Originator	<input type="text" value="n/a"/>
Project Manager	<input type="text" value="Richard Mortimer"/>
Supervisor	<input type="text" value="Stuart Ladd"/>

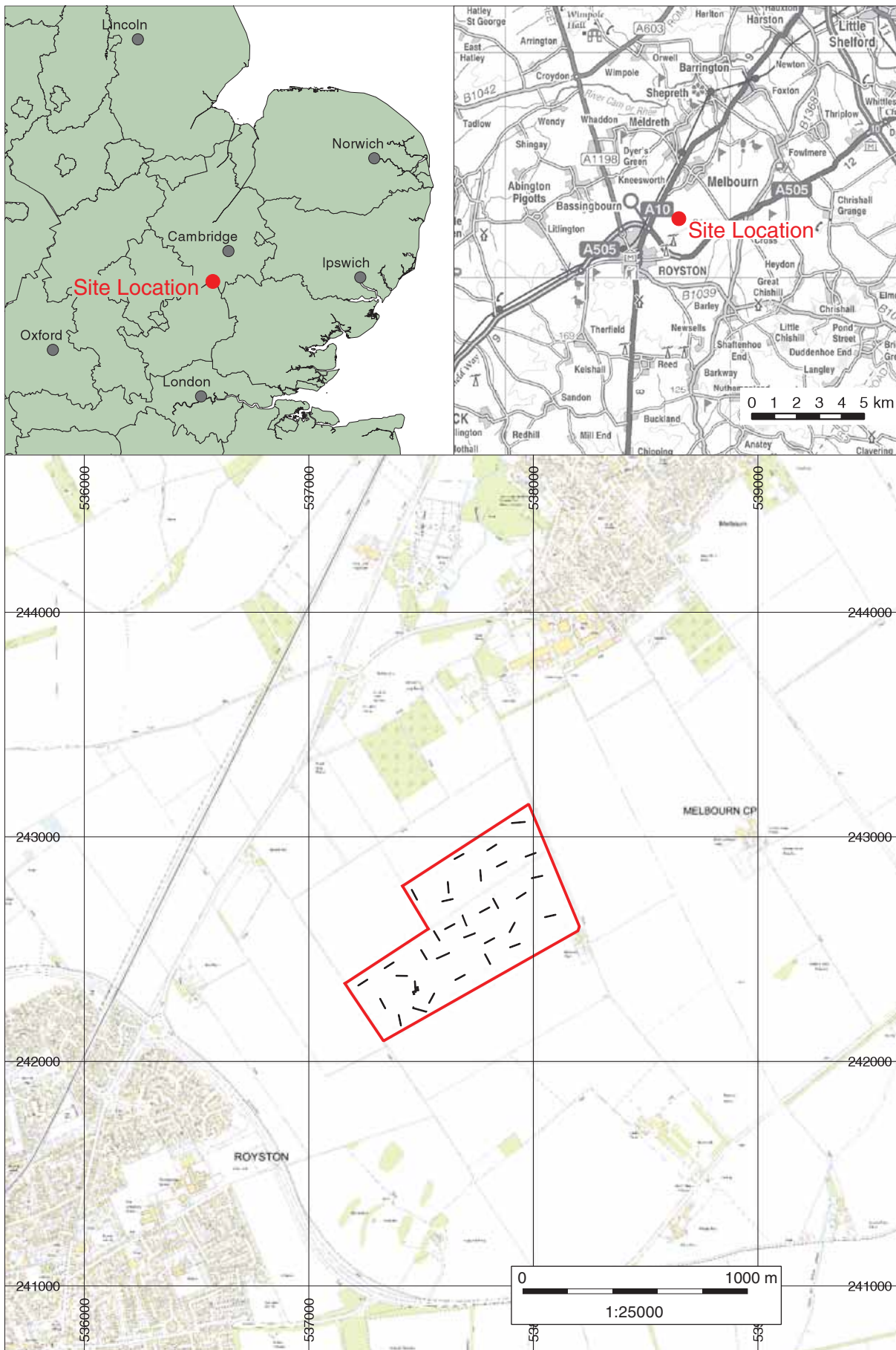
## Project Archives

Physical Archive	Digital Archive	Paper Archive
<input type="text" value="Cambridgeshire County Stores"/>	<input type="text" value="OA East"/>	<input type="text" value="Cambridgeshire County Stores"/>
<input type="text" value="ECB4298"/>	<input type="text" value="MELMUN14"/>	<input type="text" value="ECB4298"/>

## Archive Contents/Media

	Physical Contents	Digital Contents	Paper Contents
Animal Bones	<input checked="" type="checkbox"/>	<input type="checkbox"/>	<input type="checkbox"/>
Ceramics	<input checked="" type="checkbox"/>	<input type="checkbox"/>	<input type="checkbox"/>
Environmental	<input type="checkbox"/>	<input type="checkbox"/>	<input type="checkbox"/>
Glass	<input type="checkbox"/>	<input type="checkbox"/>	<input type="checkbox"/>
Human Bones	<input type="checkbox"/>	<input type="checkbox"/>	<input type="checkbox"/>
Industrial	<input type="checkbox"/>	<input type="checkbox"/>	<input type="checkbox"/>
Leather	<input type="checkbox"/>	<input type="checkbox"/>	<input type="checkbox"/>
Metal	<input type="checkbox"/>	<input type="checkbox"/>	<input type="checkbox"/>
Stratigraphic		<input type="checkbox"/>	<input type="checkbox"/>
Survey		<input type="checkbox"/>	<input type="checkbox"/>
Textiles	<input type="checkbox"/>	<input type="checkbox"/>	<input type="checkbox"/>
Wood	<input type="checkbox"/>	<input type="checkbox"/>	<input type="checkbox"/>
Worked Bone	<input type="checkbox"/>	<input type="checkbox"/>	<input type="checkbox"/>
Worked Stone/Lithic	<input checked="" type="checkbox"/>	<input type="checkbox"/>	<input type="checkbox"/>
None	<input type="checkbox"/>	<input checked="" type="checkbox"/>	<input checked="" type="checkbox"/>
Other	<input type="checkbox"/>	<input type="checkbox"/>	<input type="checkbox"/>

Digital Media	Paper Media
<input checked="" type="checkbox"/> Database	<input type="checkbox"/> Aerial Photos
<input type="checkbox"/> GIS	<input checked="" type="checkbox"/> Context Sheet
<input type="checkbox"/> Geophysics	<input type="checkbox"/> Correspondence
<input checked="" type="checkbox"/> Images	<input type="checkbox"/> Diary
<input checked="" type="checkbox"/> Illustrations	<input type="checkbox"/> Drawing
<input type="checkbox"/> Moving Image	<input type="checkbox"/> Manuscript
<input type="checkbox"/> Spreadsheets	<input type="checkbox"/> Map
<input checked="" type="checkbox"/> Survey	<input type="checkbox"/> Matrices
<input checked="" type="checkbox"/> Text	<input type="checkbox"/> Microfilm
<input type="checkbox"/> Virtual Reality	<input type="checkbox"/> Misc.
	<input type="checkbox"/> Research/Notes
	<input type="checkbox"/> Photos
	<input checked="" type="checkbox"/> Plans
	<input checked="" type="checkbox"/> Report
	<input checked="" type="checkbox"/> Sections
	<input checked="" type="checkbox"/> Survey



Contains Ordnance Survey data © Crown copyright and database right 2014. All rights reserved. Centremaps reference CM-00366954

Figure 1: Site location showing archaeological trenches (black) in development area (red)

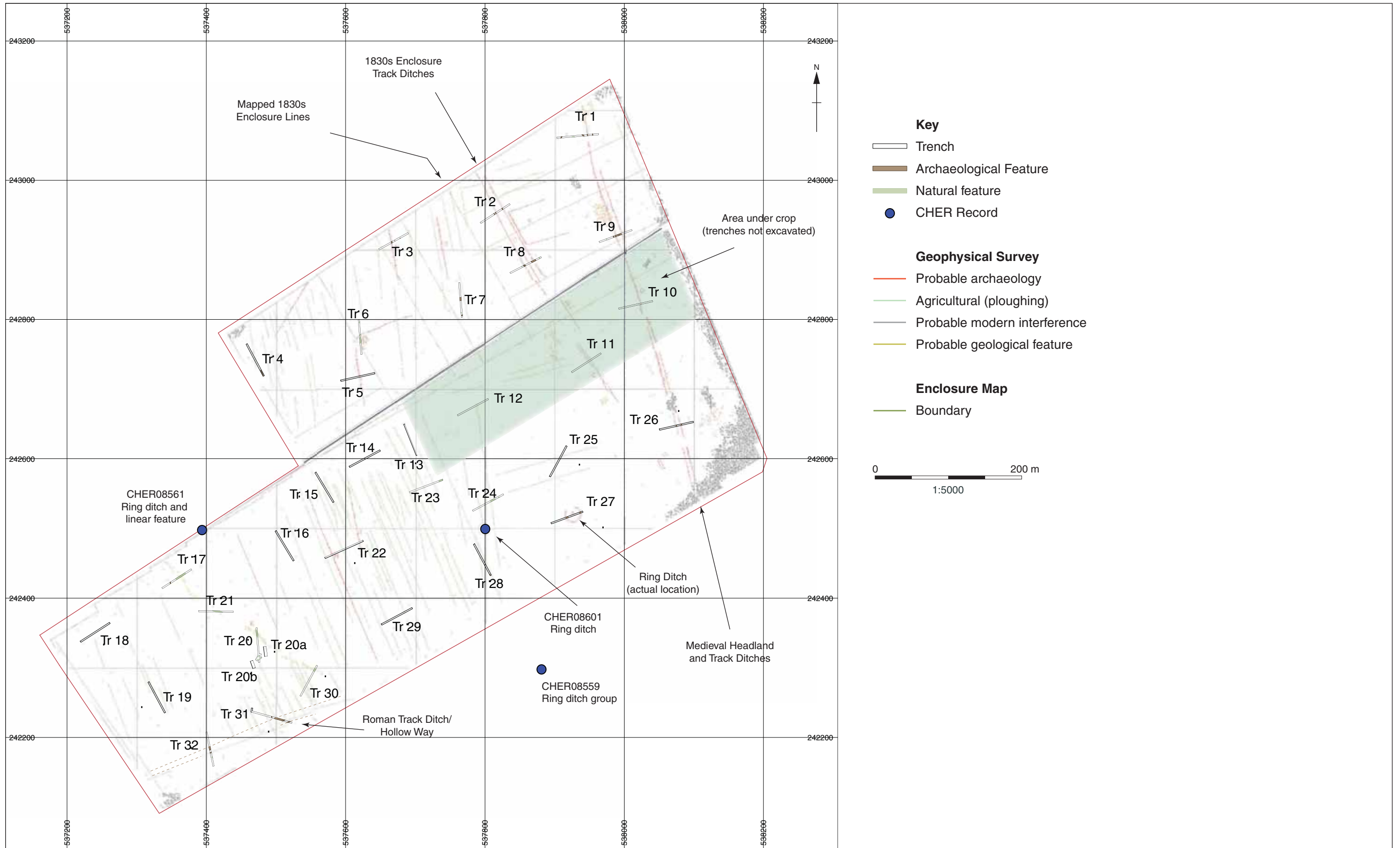


Figure 2: Trench layout showing geophysical survey interpretation and all features



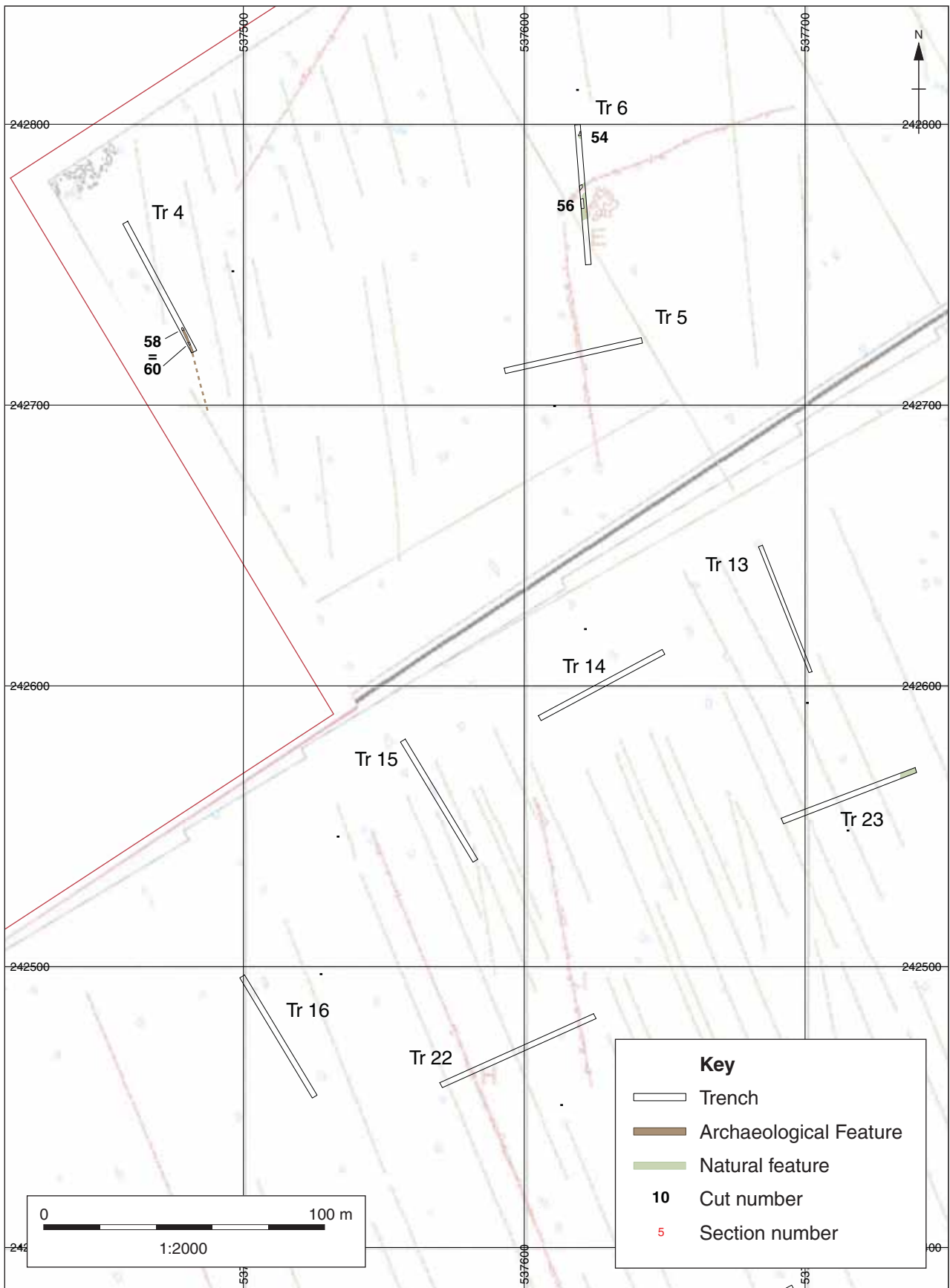


Figure 4: Trenches 4-6, 13-16, 22 & 23

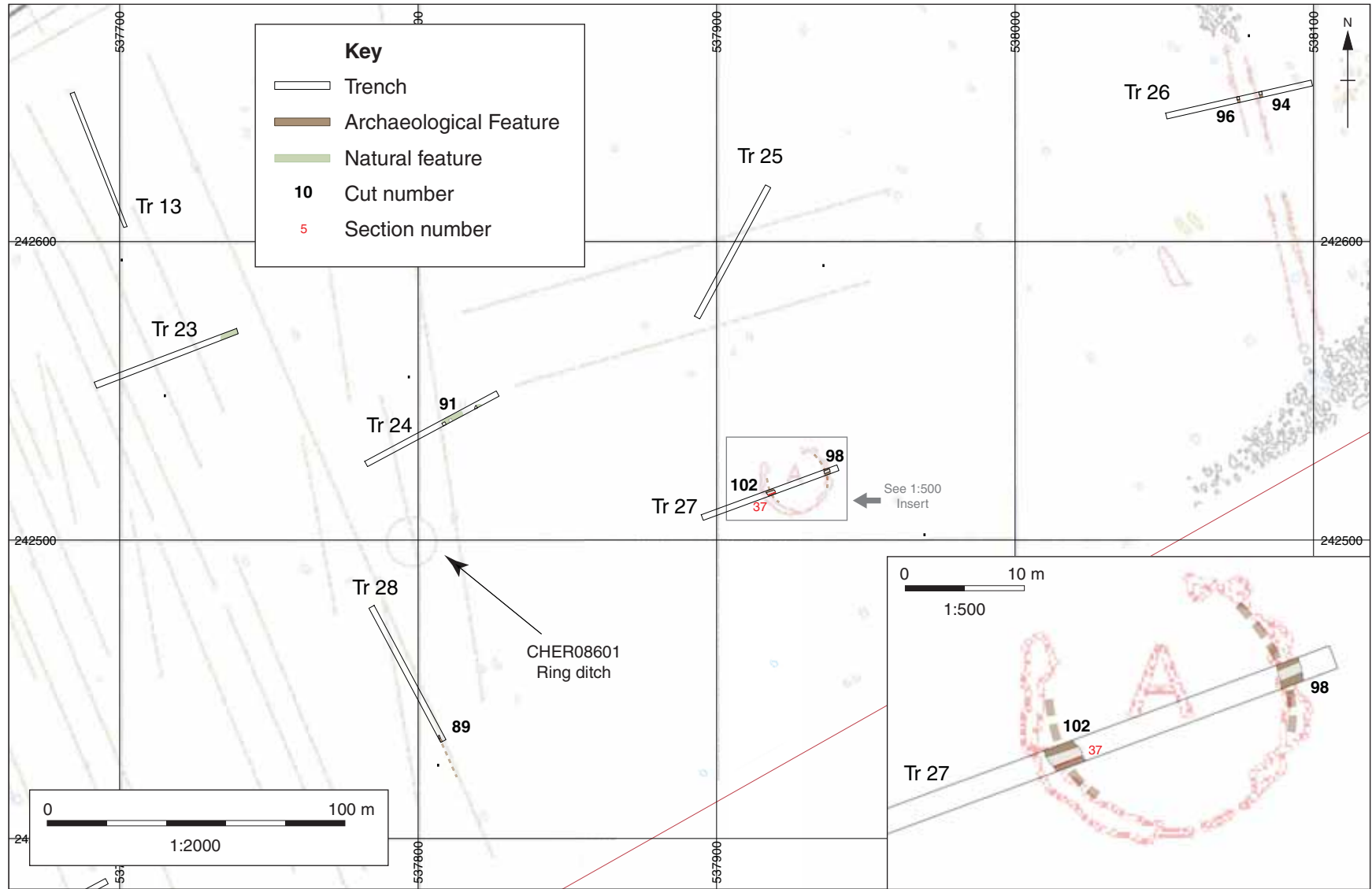


Figure 5: Trenches 24-28

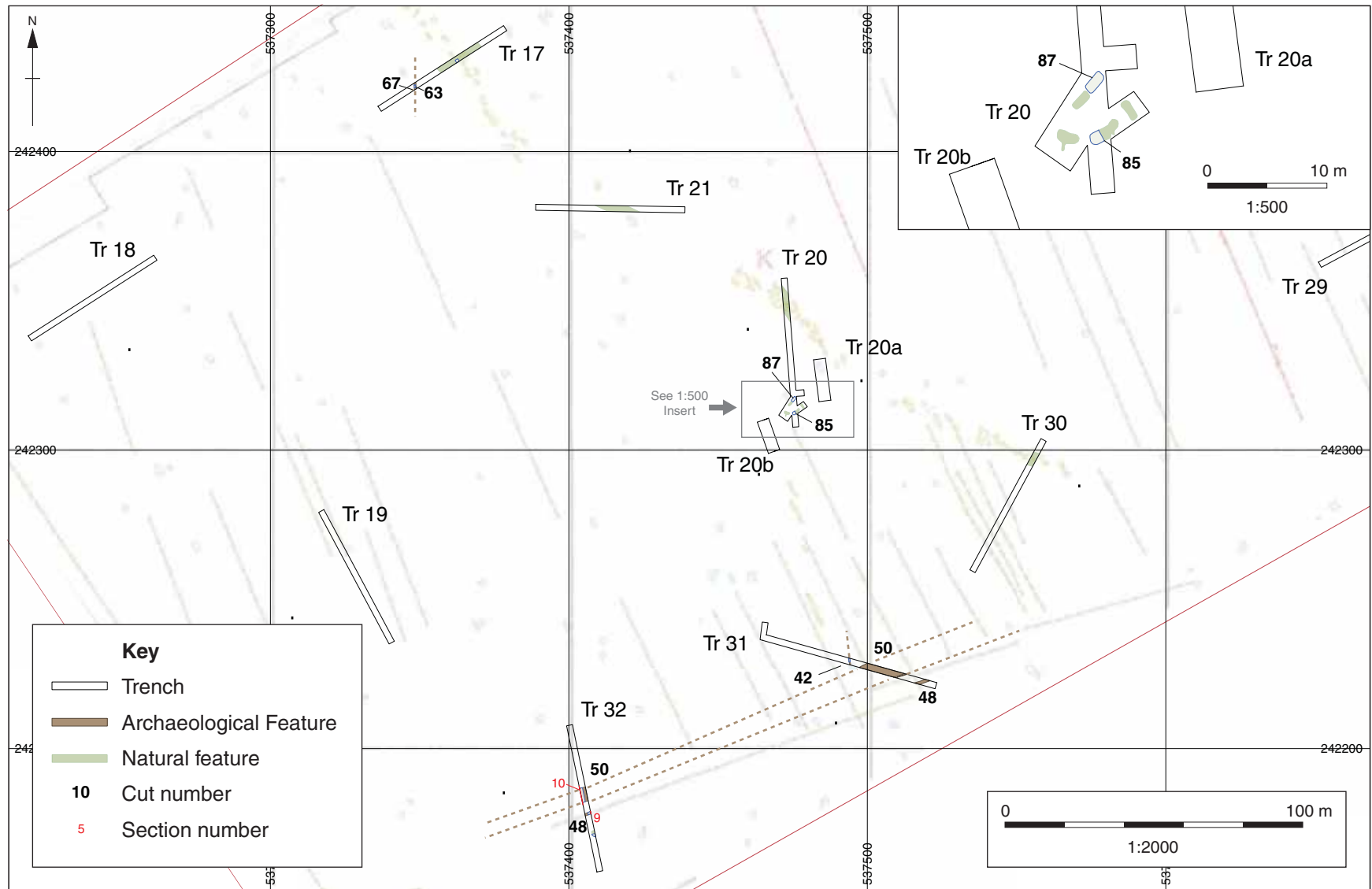


Figure 6: Trenches 17-21, 30-32

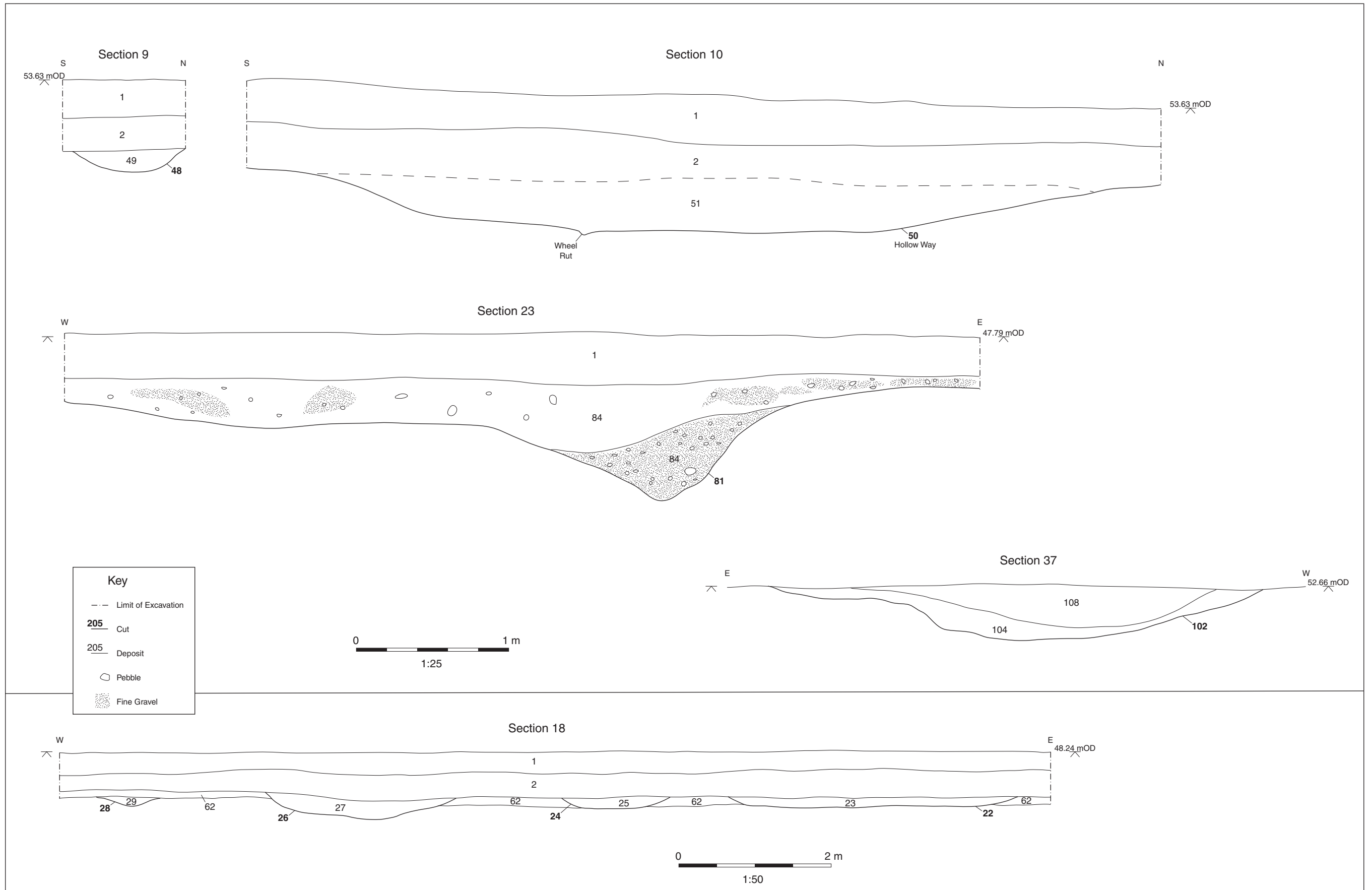


Figure 7: Section drawings



Plate 1: Extensions to Trench 20 showing natural features **87** and **85** (excavated), looking northeast



Plate 2: Ring ditch **102**, Trench 27, looking north



Plate 3: Possible Roman ditch **63** and possible posthole **67**, Trench 17, looking south



Plate 4: Roman ditch **89**, Trench 28, looking south



Plate 5: Roman hollow way **50** and boundary ditch **48**, Trench 32, looking southwest



**Head Office/Registered Office/  
OA South**

Janus House  
Osney Mead  
Oxford OX2 0ES

t: +44 (0) 1865 263 800  
f: +44 (0) 1865 793 496  
e: [info@oxfordarchaeology.com](mailto:info@oxfordarchaeology.com)  
w: <http://oxfordarchaeology.com>

**OA North**

Mill 3  
Moor Lane  
Lancaster LA1 1GF

t: +44 (0) 1524 541 000  
f: +44 (0) 1524 848 606  
e: [oanorth@oxfordarchaeology.com](mailto: oanorth@oxfordarchaeology.com)  
w: <http://oxfordarchaeology.com>

**OA East**

15 Trafalgar Way  
Bar Hill  
Cambridgeshire  
CB23 8SQ

t: +44 (0) 1223 850500  
e: [oaeast@oxfordarchaeology.com](mailto: oaeast@oxfordarchaeology.com)  
w: <http://oxfordarchaeology.com>



**Director:** Gill Hey, BA PhD FSA MIFA  
*Oxford Archaeology Ltd is a  
Private Limited Company, N<sup>o</sup>: 1618597  
and a Registered Charity, N<sup>o</sup>: 285627*