

# Jesus College Turl Street Oxford



## Historic Building Investigation and Recording



**Oxford Archaeology**

September 2004

**Client: Architects Design  
Partnership LLP**

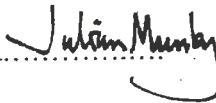
Issue N<sup>o</sup>: 1

OA Job N<sup>o</sup>: 2371

NGR: SP 514 063



**Client Name:** Architects Design Partnership  
**Client Ref No:** JCO50/7.3  
**Document Title:** Jesus College, Oxford  
**Document Type:** Historic Building Investigation and Recording  
**Issue Number:** 1  
**National Grid Reference:** SP514063  
**Planning Reference:** 04/00319/LBC  
**OA Job Number:** 2371  
**Site Code:** OXJES04  
**Invoice Code:** OXJUWB  
**Prepared by:** Jane Phimester  
**Position:** Site Assistant - Building Archaeology  
**Date:** September 2004  
**Checked by:** Edmund Simons  
**Position:** Project Officer - Building Archaeology  
**Date:** September 2004  
**Approved by:** Julian Munby  
**Position:** Head of Buildings Archaeology  
**Date:** September 2004  
**Document File Location** \\Server1\Buildings\Projects Ongoing\Jesus College\Report\Watching Brief Report2.doc  
**Graphics File Location** Server 10:/oaupub1\_IttoQ\*OXJUWBE\*Jesus College Oxford\*MD\*17.08.04  
**Illustrated by** Margaritta De Guzman  
**Building Name** Jesus College  
**Building Location** Turl Street, Oxford

Signed.....

**Disclaimer:**

*This document has been prepared for the titled project or named part thereof and should not be relied upon or used for any other project without an independent check being carried out as to its suitability and prior written authority of Oxford Archaeology being obtained. Oxford Archaeology accepts no responsibility or liability for the consequences of this document being used for a purpose other than the purposes for which it was commissioned. Any person/party using or relying on the document for such other purposes agrees, and will by such use or reliance be taken to confirm their agreement to indemnify Oxford Archaeology for all loss or damage resulting therefrom. Oxford Archaeology accepts no responsibility or liability for this document to any party other than the person/party by whom it was commissioned. © Oxford Archaeological Unit Ltd 2004*

Oxford Archaeology  
Janus House  
Osney Mead  
Oxford OX2 0ES  
t: (0044) 01865 263800  
f: (0044) 01865 793496

e: info@oxfordarch.co.uk  
w: www.oxfordarch.co.uk



# JESUS COLLEGE, OXFORD: REFURBISHMENT OF JRC AND STORE

## HISTORIC BUILDING INVESTIGATION AND RECORDING

### TABLE OF CONTENTS

<b>1</b>	<b>Introduction</b> .....	<b>5</b>
1.2	Location and scope of work.....	5
1.3	Archaeological and historical background .....	6
<b>2</b>	<b>Aims and Objectives</b> .....	<b>6</b>
<b>3</b>	<b>Methodology</b> .....	<b>6</b>
3.1	Fieldwork methods and recording .....	6
<b>4</b>	<b>Description</b> .....	<b>7</b>
<b>5</b>	<b>Observations</b> .....	<b>7</b>
<b>6</b>	<b>Discussion</b> .....	<b>8</b>
<b>7</b>	<b>Bibliography and references</b> .....	<b>9</b>
<b>8</b>	<b>Summary of Site Details</b> .....	<b>9</b>

### LIST OF FIGURES

- Fig. 1 Site location map  
Fig. 2 Plan of Jesus College (Victoria County History, Vol. III, 1954)  
Fig. 3 West facing elevation showing window prior to removal  
Fig. 4 Section (1:20) of window, west facing elevation  
Fig. 5 West facing elevation showing proposed new doorway

### PLATES

- Plate 1 External view of window, west elevation  
Plate 2 External view of upper window, west elevation  
Plate 3 External view of stonework beneath window, west elevation  
Plate 4 Internal view of window, west elevation  
Plate 5 External view following removal of window and stonework, west elevation  
Plate 6 Northeast view showing inner core of west elevation



# JESUS COLLEGE

TURL STREET, OXFORD

## HISTORIC BUILDING INVESTIGATION AND RECORDING

### SUMMARY

*Oxford Archaeology (OA) carried out a watching brief on behalf of the Architects Design Partnership at Jesus College, Oxford. The works consisted of creating a door opening in place of an existing window to the internal room of the old Junior Common Room (JCR) that is presently accessed by Staircase VIII. The stone head and jamb detail of the door are to follow those of the window to maintain the form of the west elevation. The works were completed as planned and no features of particular archaeological interest were revealed.*

---

## 1 INTRODUCTION

- 1.1.1 This watching brief has been requested by the Architects Design Partnership on behalf of Jesus College, Oxford. Planning permission has been granted to Jesus College as part of the building maintenance programme and continual assessment of their facilities. As part of this program a door is to replace an opening presently occupied by an existing window in the JCR. OA has been commissioned by Architects Design Partnership to conduct a watching brief during the removal of the window.
- 1.1.2 The new door and surround will follow that of the existing door to the 3rd Quadrangle from Staircase X. The stone head and jamb details of the new door are to match those of the existing window with the jamb extending down to the ground level. The plinth and string course of the new door will be similar to that of the new door in Staircase X.
- 1.2 **LOCATION AND SCOPE OF WORK**
  - 1.2.1 Jesus College (SP514063) stands on the west side of Turl Street between Market Street and Ship Street. The college houses three quads and the JRC and store are housed in the central quad. The rooms are accessed by Staircase VIII in the south west corner of the college. The window (that is to be removed as part of the current works) is located on the ground floor west elevation (Fig. 2).
  - 1.2.2 The watching brief was to include a photographic, written and drawn record of the existing window prior to its removal. The watching brief was to monitor the removal of the window and underlying stone work. Any features of archaeological interest were to be recorded and the Local Planning Authority (LPA) was to be contacted as appropriate.

### 1.3 **ARCHAEOLOGICAL AND HISTORICAL BACKGROUND**

1.3.1 Jesus College is the only Oxford college to date from the reign of Queen Elizabeth I and received its first royal charter on 27th June 1571. Jesus College was intended for the education of future clergymen and the charter stated that it would be a 'college of learning in the sciences of philosophy, the moral arts, and knowledge of the Hebrew, Greek and Latin languages, with the eventual aim of professing sacred Theology'(VCH Vol. 3 1954, 264). The college walls are of local Oxfordshire stone with dressings of the same material and the roofs are slate-covered (R.C.H.M.E 1939, 60).

1.3.2 The range facing Turl Street dates to the 16th century and is structurally Elizabethan although it was entirely refaced in 1854 by J.C & C.A Buckler. The first quad dates predominately to the 17th century although the south range is partly Elizabethan and partly Jacobean. The second quad came to the college as part of White Hall that dates to the 13th century. It is of uniform composition and built between c.1640 and c.1713. It was in 1678 that staircase VIII was built. All three residential staircases are three storeys high with a uniform roofscape of small ogee gables. The windows have round-arched lights with their hood mould forming a continuous frieze. The long range along Ship Street was built in 1905 (Sherwood & Pevsner 1974, 142).

## 2 **AIMS AND OBJECTIVES**

The general aims and objectives are:

- To make a record of the present window prior to removal
- To conduct a watching brief during the removal of the window
- To record any features of archaeological interest (such as different material and construction) to the Oxfordshire Planning Authority during the watching brief as appropriate
- To produce a brief report detailing the findings of the watching brief
- To deposit the site archive with the LPA and the Sites and Monuments Record Office (SMR).

## 3 **METHODOLOGY**

### 3.1 **FIELDWORK METHODS AND RECORDING**

3.1.1 The fieldwork for the watching brief was completed intermittently over the 14th, 15th and 16th July 2004. This included:

3.1.2 *The Base Survey*

3.1.3 The base survey for the present programme of archaeological recording was previously commissioned by Architects Design Partnership. This includes a plan of the college as well as a west facing elevation that provided the plan for the window (Fig. 3).



- 3.1.4 *The Drawn Record*
- 3.1.5 A section (1:20) was completed of the window detailing the external brickwork and internal panelling (Fig.4).
- 3.1.6 *The Photographic Record*
- 3.1.7 A full black and white negative, colour prints and colour slide photographic record was made by OA of the window. Photographs were taken prior, during and following the removal of the window.
- 3.1.8 *The Written Record*
- 3.1.9 Written descriptions of the window were made as part of the annotated drawings. Additional notes were taken as appropriate during the watching brief.

#### 4 **DESCRIPTION**

- 4.1.1 The 17th-century gothic style window is of the same form as the remaining ground floor windows on the west elevation (Plate 1). It is a stone double arched window with a central support extending below to the sill. The form of the window is typical of a much earlier date although this style was continued at colleges in Oxford.
- 4.1.2 The wooden sash frame has two divisions housing ten lights. The window has been modified at a later date and a modern extractor fan has been added to the top division of the more southern section (Plate 2). Stone moulding extending the length of the elevation frames the window, and there is also a stone roll beneath the window (Plate 3).
- 4.1.3 Internally, the window is in a recess that houses a window seat and there is painted wooden panelling surrounding the window (Plate 4).

#### 5 **OBSERVATIONS**

- 5.1.1 The painted wooden panelling surrounding the window was removed thus revealing the underlying undressed stonework. No markings of archaeological significance were found on the stonework or panelling. Several red bricks were visible below the window frame indicating that the area had been recently repaired.
- 5.1.2 The window was extracted and the stonework cut down to the plinth following the jambs of the window. This was undertaken with a rotating electrical saw and hammer and mason's chisel where necessary (Plate 5).
- 5.1.3 The lintel and roll moulding of the window were shown to be recent in date. It is thought that the elevation underwent repairs to these areas in the 1970s. The inner core is of undressed stone that is loosely bonded with pebbly mortar. Behind this the inner core of the wall is a loose fill of sand, stone and mortar. This is faced internally with a cement mix in the area of the window seat (Plate 6).
- 5.1.4 Following these works mouldings were taken of the architrave above the window so that this frame could be continued below to the door threshold. The proposed door is shown in Figure 5.

6

## **DISCUSSION**

- 6.1.1 The works were completed as planned and no features of archaeological interest were revealed.
  
- 6.1.2 The works showed that the elevation had been repaired at a later date, thought to be in the 1970s. The lintel and roll mouldings of the window had been replaced as part of the ongoing maintenance works of the college.



## 7 BIBLIOGRAPHY AND REFERENCES

Sherwood, J & Pevsner, N *The Buildings of England: Oxfordshire*, Penguin Books, 1974

Salter, H, Litt, D & Lobel, M (ed) *The Victorian History of the Counties of England - Oxfordshire (Vol. 3)*, Oxford University Press, 1954

R.C.H.M.E *An Inventory of the Historical Monuments in the City of Oxford*, Majesty's Stationary Office, 1939

## 8 SUMMARY OF SITE DETAILS

**Site name:** Jesus College, Oxford

**Site code:** OXJES04

**Type of evaluation:** Building Watching Brief

**Date and duration of project:**

**Summary of results:** Works were completed as planned and no features of archaeological interest were revealed.

**Location of archive:** The archive is currently held at OA, Janus House, Osney Mead, Oxford, OX2 0ES.

### List of Archived Items:

Two films of 35mm photographic negatives (black and white prints)

Two sets of black and white photographic prints (contact sheets)

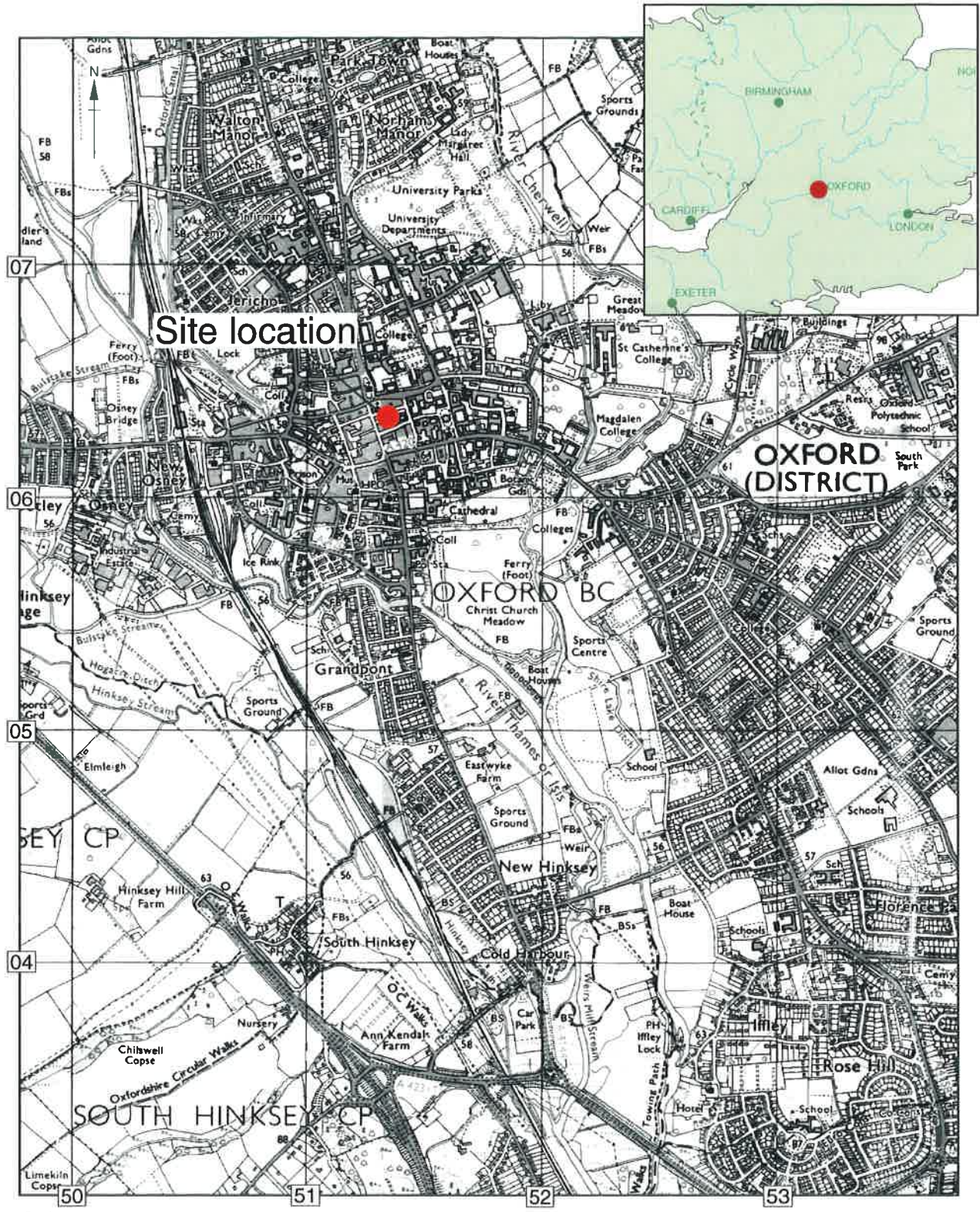
Two films of 35mm colour slides

A copy of the current report

Original site drawings to permatrace

Descriptive notes





Scale 1:25,000

Reproduced from the Landranger 1:50,000 scale by permission of the Ordnance Survey on behalf of The Controller of Her Majesty's Stationery Office  
© Crown Copyright 1996. All rights reserved. Licence No. AL 100005569

Figure 1: Site location

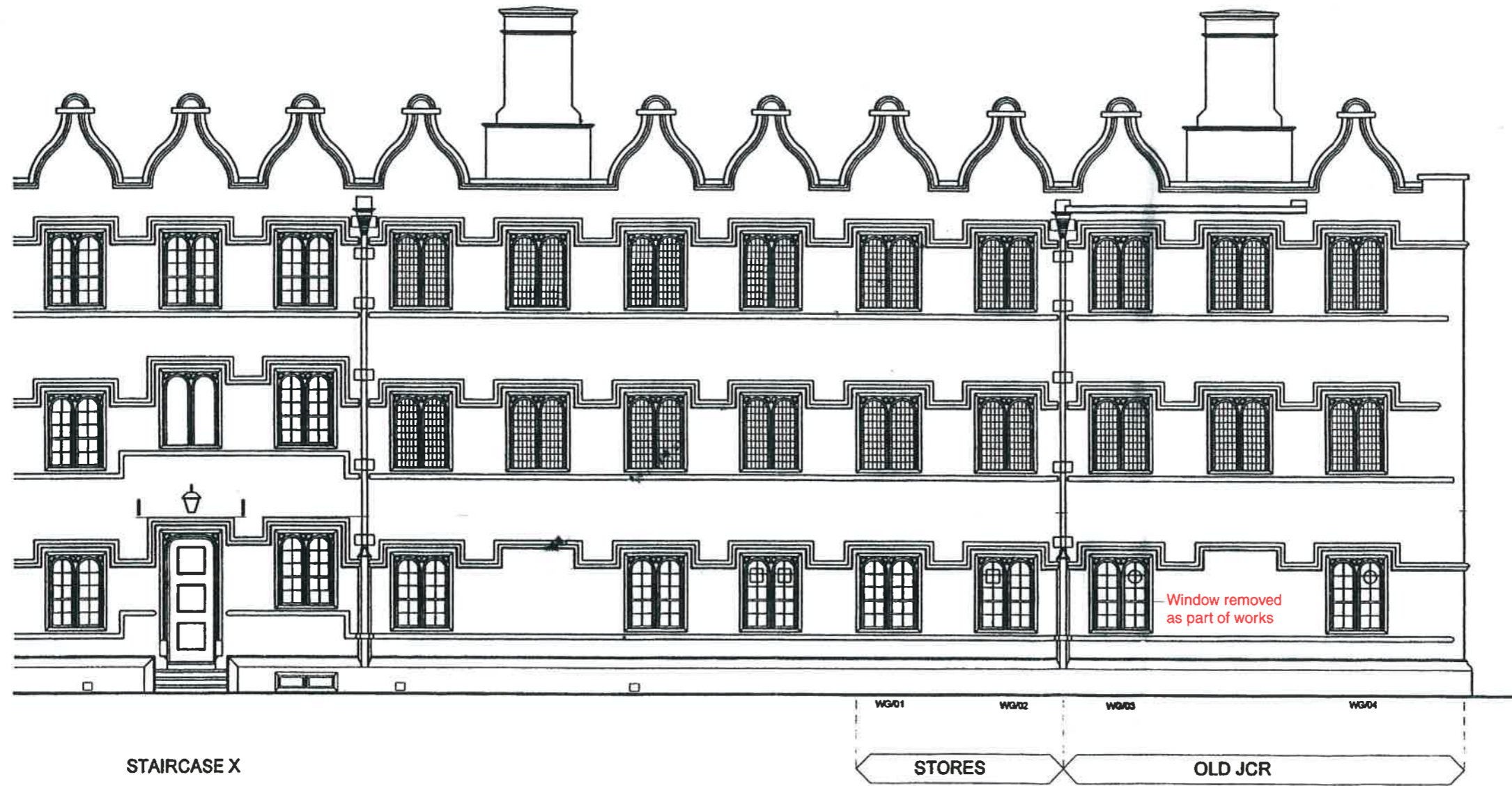


Figure 3: West facing elevation, prior to removal of window



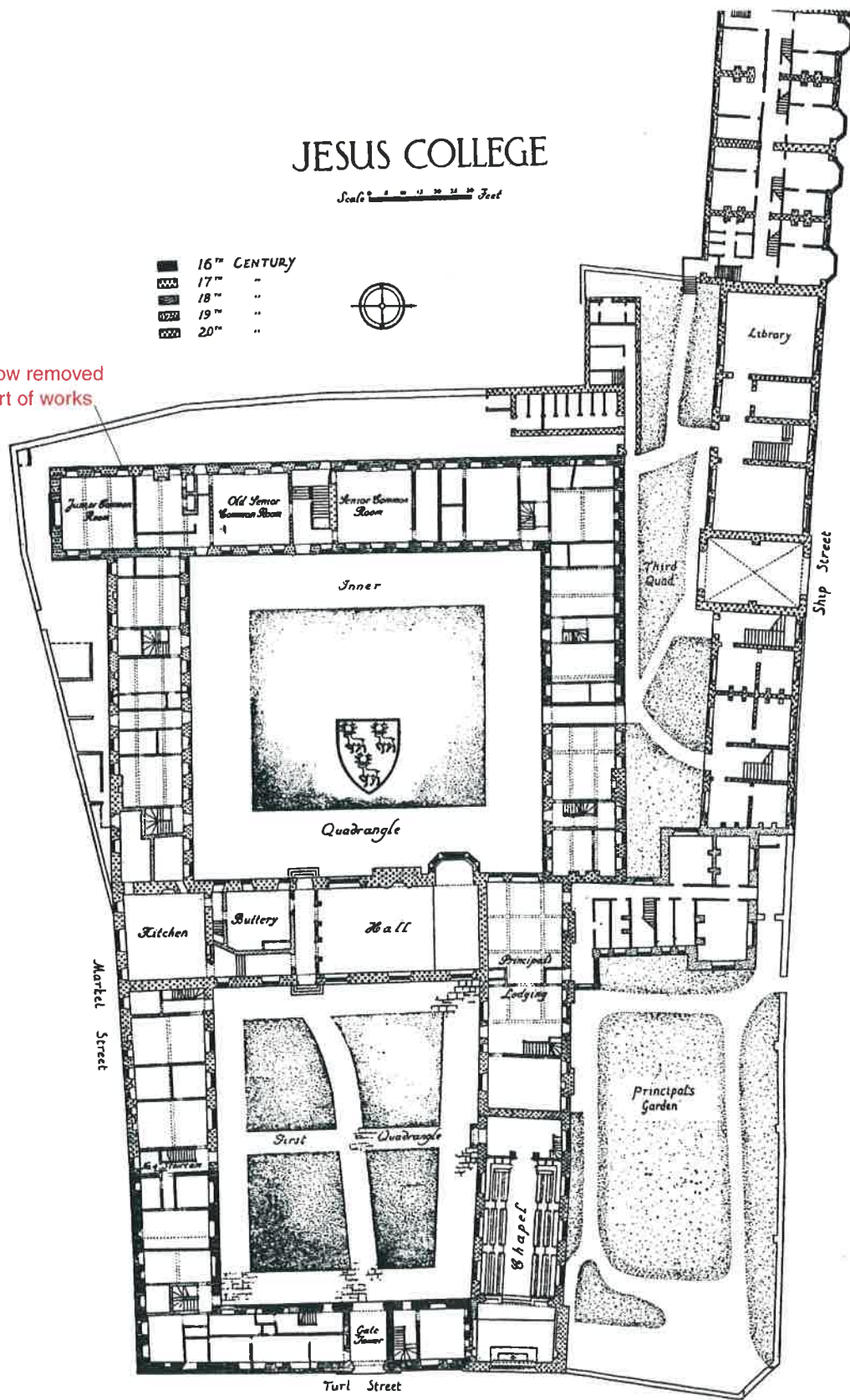
# JESUS COLLEGE

Scale  Feet

	16 <sup>th</sup> CENTURY
	17 <sup>th</sup> "
	18 <sup>th</sup> "
	19 <sup>th</sup> "
	20 <sup>th</sup> "



Window removed as part of works



x n

Figure 2: Plan of Jesus College (Victorian County History, Vol. III, 1954)

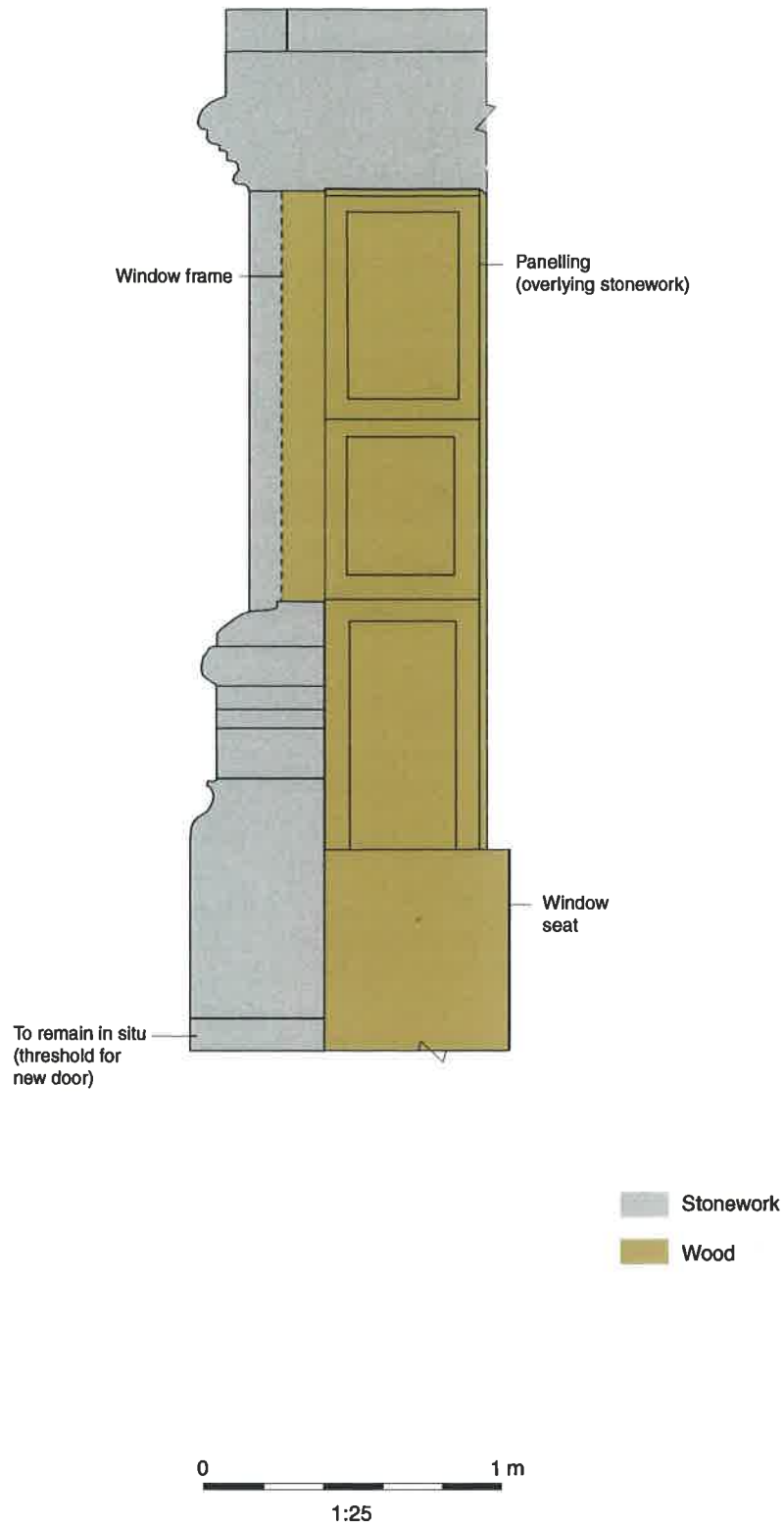


Figure 4: Section of window, west facing elevation



Plate 2: External view of upper window, west elevation



Plate 1: External view of window, west elevation



Plate 3: External view of stonework beneath window, west elevation



Figure 5: Proposed west facing elevation



Plate 4: Internal view of window, west elevation



Plate 5: External view following removal of window and stonework, west elevation



Plate 6: North-east view showing inner core of west elevation



### **Oxford Archaeology**

Janus House  
Osney Mead  
Oxford OX2 0ES

t: (0044) 01865 263800  
f: (0044) 01865 793496  
e: [info@oxfordarch.co.uk](mailto:info@oxfordarch.co.uk)  
w: [www.oxfordarch.co.uk](http://www.oxfordarch.co.uk)



### **Oxford Archaeology North**

Storey Institute  
Meeting House Lane  
Lancaster LA1 1TF

t: (0044) 01524 541000  
f: (0044) 01524 848606  
e: [lancinfo@oxfordarch.co.uk](mailto:lancinfo@oxfordarch.co.uk)  
w: [www.oxfordarch.co.uk](http://www.oxfordarch.co.uk)



**Director:** David Jennings, BA MIFA FSA

Oxford Archaeological Unit is a  
Private Limited Company, N<sup>o</sup>: 1618597  
and a Registered Charity, N<sup>o</sup>: 285627

**Registered Office:**

Oxford Archaeological Unit  
Janus House, Osney Mead, Oxford OX2 0ES