

Site/Project Name: **Little Wittenham Castle Hill New Tree Planting**

Site Code: LWCHL 07

Site/Project Type: Watching brief

Year(s): 2007

Accession Number: OXCMS:2003.82 (cont)

Record Group	Contents	Comments	Box/File Number
	INTRODUCTION Northmoor Trust implementation plan excerpt Application for Scheduled Monument consent Consent – see earlier phase archive Consent extension	8 A3 sheets 5 sheets 2 sheets	Box 1 file 1
A	REPORT Watching brief report	1 bound copy	Box 1 file 2
B	PRIMARY CONTEXT DATA Watching brief record sheets Context checklist nos1000 Context sheet	1 sheet 1 sheet 1 sheet	Box 1 file 3
B	PRIMARY DRAWINGS Sketch showing outline of the deer fence	1 sheet	Box 1 file 4
D	CATALOGUE OF PHOTOGRAPHS B/W index Colour slide index	1 sheet 1 sheet	Box 1 file 5

FILMING INSTRUCTIONS

Submitter OASouth

No. of scan disk copies: ~~2~~ 3

Headings

Site information

Line 1: [OASouth] County[Oxon] Parish:[Little Wittenham]

Site[Castle Hill New Tree Planting] Site code[LWCHL 07]

Line 2: Excavators name[D Dodds]

Line 3:

Classification of material

Tick if present

Classification of material	Tick if present
Index to archive	<input checked="" type="checkbox"/>
Introduction	<input type="checkbox"/>
A:Final Report	<input type="checkbox"/>
A:Publication Report	<input type="checkbox"/>
B:Site Data – Text: Diary/Daybook/Fieldnotes	<input type="checkbox"/>
B: Site Data – Text: General Summaries	<input type="checkbox"/>
B: Site Data – Text: Primary Context Records	<input type="checkbox"/>
B: Site Data – Text: Synthesised Context Records	<input type="checkbox"/>
B: Site Data – Text: Survey Reports	<input type="checkbox"/>
B: Site Data – Text: Catalogue of Drawings	<input type="checkbox"/>
B: Site Data – Text: Primary Drawings	<input type="checkbox"/>
B: Site Data – Text: Synthesised Drawings	<input type="checkbox"/>
C: Finds Data – Text: Primary Finds Data	<input type="checkbox"/>
C: Finds Data – Text: Synthesised Finds Data	<input type="checkbox"/>
C: Finds Data – Text: Specialist Reports	<input type="checkbox"/>
C: Finds Data – Text: Box/Bag List	<input type="checkbox"/>
D: Catalogue of Photos/Slides/Videos/X--rays	<input type="checkbox"/>
E: Environmental/Ecofact Data: Primary Records	<input type="checkbox"/>
E: Environmental/Ecofact Data: Synthesised Records	<input type="checkbox"/>
E: Environmental/Ecofact Data: Specialist Reports	<input type="checkbox"/>
F: Documentary	<input type="checkbox"/>
F: Press and Publicity	<input type="checkbox"/>
G: Correspondence	<input type="checkbox"/>
H: Miscellaneous	<input type="checkbox"/>

OASIS DATA COLLECTION FORM: England

[List of Projects](#) | [Search Projects](#) | [New project](#) | [Change your details](#) | [HER coverage](#) | [Change country](#) | [Log out](#)

[Printable version](#)

OASIS ID: oxfordar1-78066

Project details

Project name	Little Wittenham Castle Hill New Tree Planting
Short description of the project	In January 2007 OA carried out a watching brief at Castle Hill Little Wittenham, on behalf of the Northmoor Trust, prior to planting of 45 trees within the area of the Sceduled Monument. The tree slots revealed only topsoil and leaf mould, no underlying deposits were exposed.
Project dates	Start: 09-01-2007 End: 09-01-2007
Previous/future work	Yes / Not known
Any associated project reference codes	LWCHL 07 - Sitecode
Any associated project reference codes	OXCMS:2003.82 - Museum accession ID
Type of project	Recording project
Site status	Scheduled Monument (SM)
Current Land use	Woodland 5 - Undetermined
Monument type	NONE None
Significant Finds	NONE None
Investigation type	'Watching Brief'
Prompt	Scheduled Monument Consent

Project location

Country	England
Site location	OXFORDSHIRE SOUTH OXFORDSHIRE LITTLE WITTENHAM Castle Hill New Tree Planting
Study area	0.80 Hectares
Site coordinates	SU 565 927 51.6298039346 -1.183622677570 51 37 47 N 001 11-01 W Point

Project creators

Name of Organisation	Oxford Archaeology
Project brief originator	Northmoor Trust

Project design originator	no formal WSI issued
Project director/manager	D. Dodds
Project supervisor	M. Simms
Type of sponsor/funding body	Landowner
Name of sponsor/funding body	Northmoor Trust

Project archives

Physical Archive Exists?	No
Physical Archive recipient	OXCMS:2003.82
Digital Archive recipient	LWCHL 07
Digital Contents	'other'
Digital Media available	'Text'
Paper Archive recipient	OXCMS:2003.82
Paper Contents	'Stratigraphic'
Paper Media available	'Context sheet','Photograph','Plan','Report','Unpublished Text'
Entered by	Nicola Scott (n.scott@oxfordarch.co.uk)
Entered on	4 June 2010

OASIS:

Please e-mail English Heritage for OASIS help and advice

© ADS 1996-2006 Created by Jo Gilham and Jen Mitcham; email Last modified Friday 3 February 2006

Site only: /dl/export/home/web/oasis/form/print.cfm for this page



LITTLE WITTENHAM
NEW TREE PLANTING
CASTLE HILL

Box | File |

INTRODUCTION

OXFORD ARCHAEOLOGY, JANUS HOUSE, OSNEY MEAD, OXFORD, OX2 OES

FILMING INSTRUCTIONS

Submitter OASouth

No. of scan disk copies: 3

Headings

Site information

Line 1: [OASouth] County[Oxon] Parish:[Little Wittenham]

Site[Castle Hill New Tree Planting] Site code[LWCHL 07]

Line 2: Excavators name[D Dodds]

Line 3:

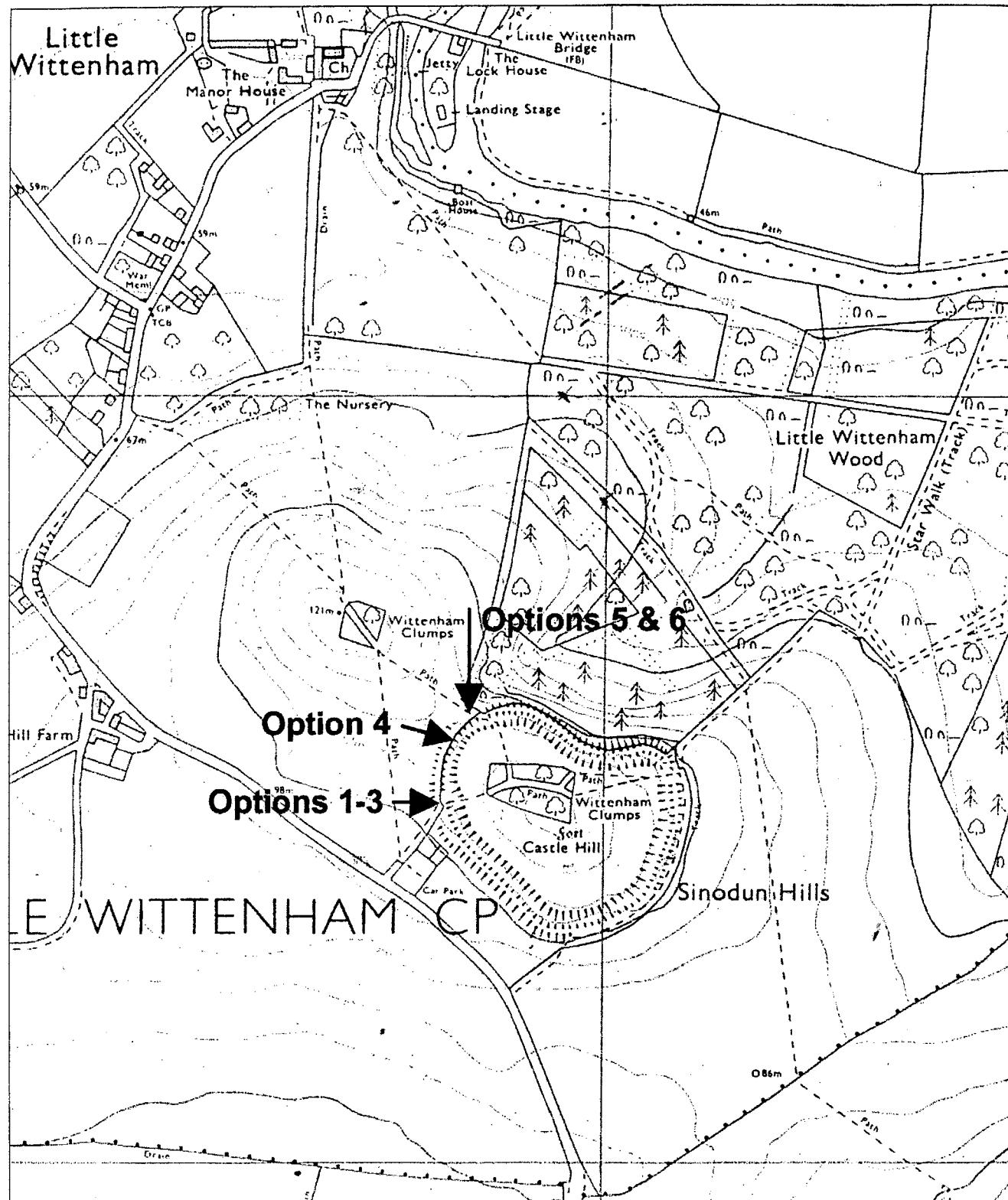
Classification of material

Tick if present

Classification of material	Tick if present
Index to archive	
Introduction	<input checked="" type="checkbox"/>
A:Final Report	
A:Publication Report	
B:Site Data – Text: Diary/Daybook/Fieldnotes	
B: Site Data – Text: General Summaries	
B: Site Data – Text: Primary Context Records	
B: Site Data – Text: Synthesised Context Records	
B: Site Data – Text: Survey Reports	
B: Site Data – Text: Catalogue of Drawings	
B: Site Data – Text: Primary Drawings	
B: Site Data – Text: Synthesised Drawings	
C: Finds Data – Text: Primary Finds Data	
C: Finds Data – Text: Synthesised Finds Data	
C: Finds Data – Text: Specialist Reports	
C: Finds Data – Text: Box/Bag List	
D: Catalogue of Photos/Slides/Videos/X--rays	
E: Environmental/Ecofact Data: Primary Records	
E: Environmental/Ecofact Data: Synthesised Records	
E: Environmental/Ecofact Data: Specialist Reports	
F: Documentary	
F: Press and Publicity	
G: Correspondence	
H: Miscellaneous	

ACCESS OPTIONS TO CASTLE HILL CLUMP

Access Options to Castle Hill Clump - Overview



Introduction:

As part of the current historic restoration of Wittenham Clumps Scott Wilson has been commissioned by the Northmoor Trust to develop options for the restoration of the access points to Castle Hill hillfort. The hillfort is designated as schedule ancient monument and suffers currently from erosion at its several entrance points. As the result of that the main objectives for the design options of the access points have been:

1. To control erosion at the entrance points to the hillfort
2. To assess the possibility to accommodate disabled access to the hillfort
3. To develop options that are visually pleasing and in keeping with the current landscape setting
4. To develop options that have minimal direct impacts such as foundations on the schedule ancient monument in order to obtain consent from English Heritage

The study has been concentrated on the two main access points to Castle Hill, the southern entrance connecting the car park with the hillfort and the western entrance allowing access from Round Hill Clump.

In discussion with representatives of the Northmoor Trust the following options have been considered and assessed:

- Option 1 - Southern access point: Resurfacing of maintenance track and freestanding timber steps
- Option 2 - Southern access point: Resurfacing of maintenance track and ramp for disabled access
- Option 3 - Southern access point: Resurfacing of maintenance track only
- Option 4 - Bridge across Castle Hill ditch in new location
- Option 5 - Western access point: Proposed bridge across Castle Hill ditch to replace existing steps
- Option 6 - Western access point: Resurfacing of existing steps

Figure: Plan showing the location of different options

ACCESS OPTIONS TO CASTLE HILL CLUMP

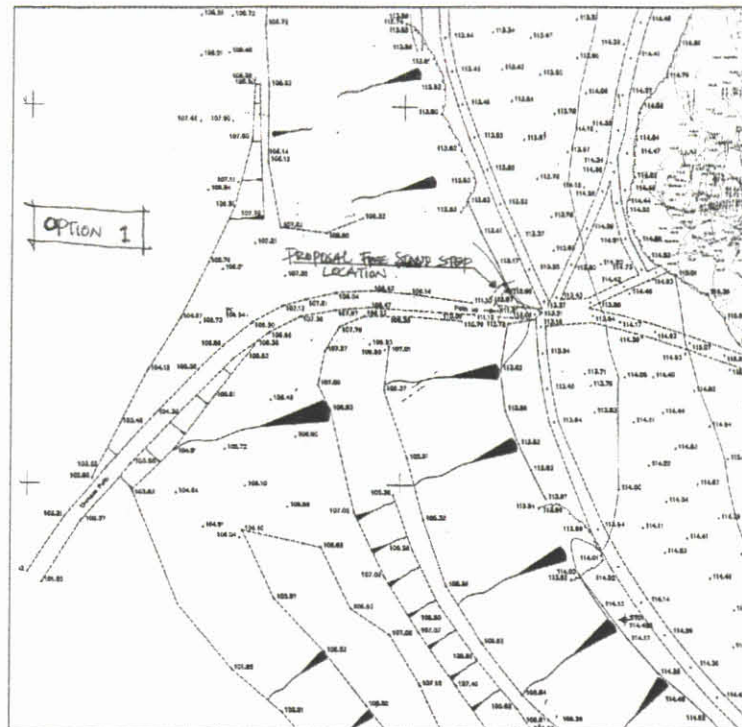


Figure 1.1: Plan view of option 1

Option 1 - Southern access point: Resurfacing of maintenance track and freestanding timber steps

Scope:

- To provide free-standing timber steps alongside maintenance track to minimise erosion to existing maintenance track by offering pedestrians an alternative route
- Maintenance track to be resurfaced and retained for maintenance purpose only; resurfacing aims to stop further erosion to access points. Resurfacing is likely to require some excavation for provision of subbase

Advantages:

- Reduce wear on existing maintenance track
- Reduce conflict between pedestrians and maintenance vehicles on the track

Disadvantages:

- Visually relatively intrusive
- Some direct impacts on ancient monument caused by foundations to timber steps – approval from English Heritage (EH) questionable
- Acceptance/use by visitors questionable
- Wheelchair access greater than 1:20



Figure 1.2 & 1.3: Photo of existing view, sketch of resurfaced maintenance track and freestanding steps

ACCESS OPTIONS TO CASTLE HILL CLUMP

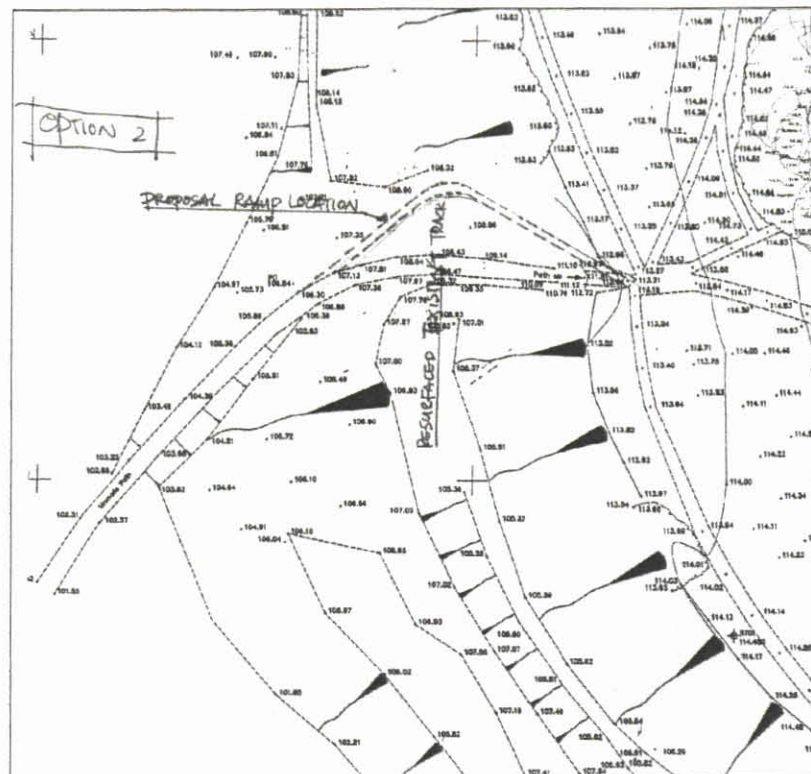


Figure 2.1: Plan view of option 2

Option 2: Southern access point: Resurfacing of maintenance track and ramp for disabled access**Scope:**

- Maintenance track to be resurfaced and retained for maintenance purpose only
- Ramp to be build to ease disabled access

Advantages:

- Gradient of ramp less steep (approx. 1:8) than gradient of maintenance track at steepest location (approx. 1:5); however gradient does not fulfil legal requirements for disabled access (official requirements for 10m or more – 1:20)

Disadvantages:

- Conflict between maintenance track and ramp as ramp has to cross track
- Gradient too steep to allow unsupported disabled access; gradient approx. 1:8
- Visually very intrusive
- High direct impact on ancient monument because of foundations and fixings;
- Relatively high cost implication
- Solution very likely not acceptable by EH



Figure 2.2 & 2.3: Photo of existing view, sketch of resurfaced maintenance track and ramp

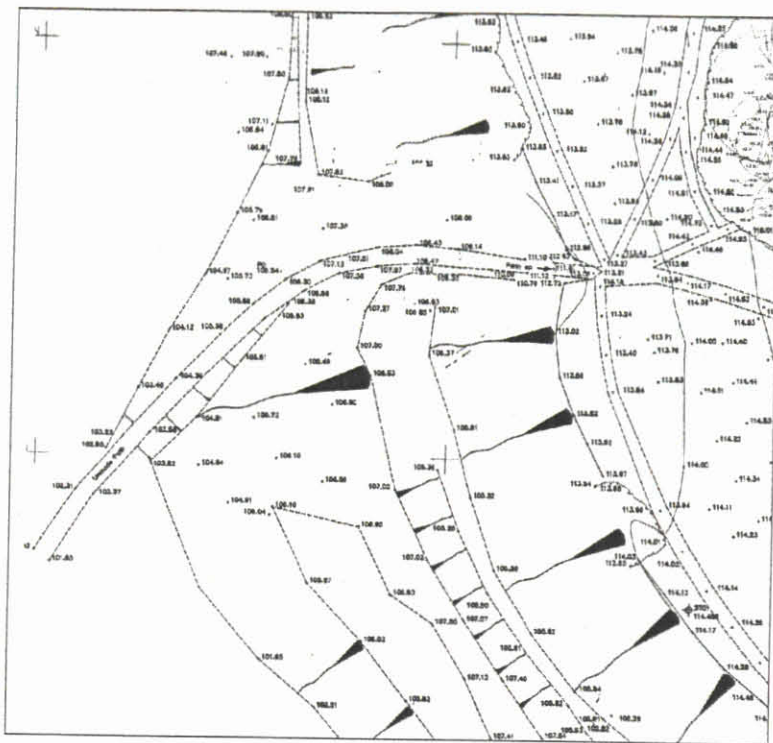


Figure 3.1: Plan view of option 3

Option 3 - Southern access point: Resurfacing of maintenance track only

Scope:

- Resurface maintenance track to minimise erosion; proposed surfacing material: hardcore or some compacted gravel surface
- Increase level at bottom of steep slope to ease access to the monument
- Stabilise sides to maintenance track, especially on top of ancient monument where track is eroded
- Maintenance track to be used by maintenance vehicles and pedestrians

How?

Advantages:

- Visually in keeping with the surrounding landscape character
- Minimal impact on ancient monument
- Low cost implication

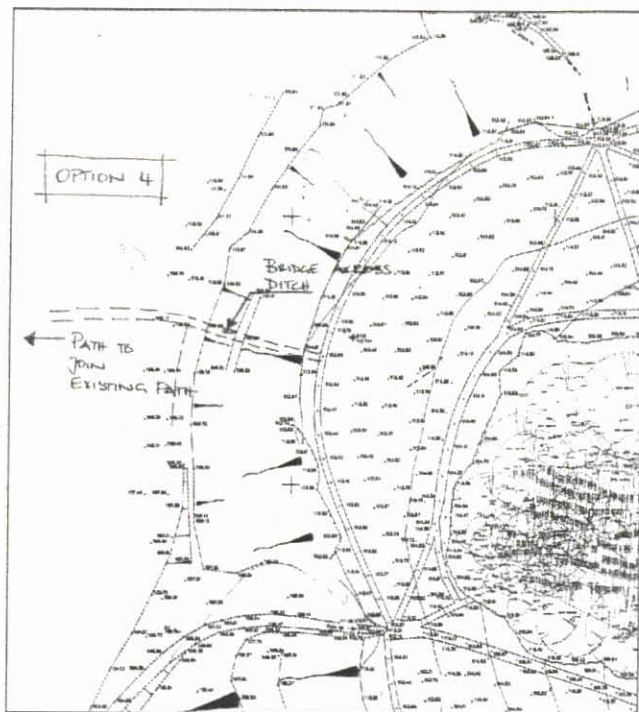
Disadvantages:

- Steep slope; no easy access for people with walking disabilities;
- Shared track might cause occasional conflict between pedestrians and vehicles



Survey of existing before burial.

Figure 3.2 & 3.3: Photo of existing view, sketch of resurfaced maintenance track



Option 4 – Bridge across Castle Hill ditch in new location

Scope:

- Proposed timber bridge across Castle Hill ditch; location half way between southern and western access point
- Retain maintenance track for occasional maintenance access; resurface track in hardcore
- Mark additional route to new access point

Advantages:

- Provision of disabled access
- Visually relatively un-intrusive as partly screened by existing vegetation
- Bridge across ditch in most suitable location as ditch is narrowest at this point

Disadvantages:

- High cost implication
- Requirement of structural engineer to design bridge
- Foundations and fixing will cause high direct impact on ancient monument
- Provision of access track to bridge necessary

Figure 4.1: Plan view of option 4

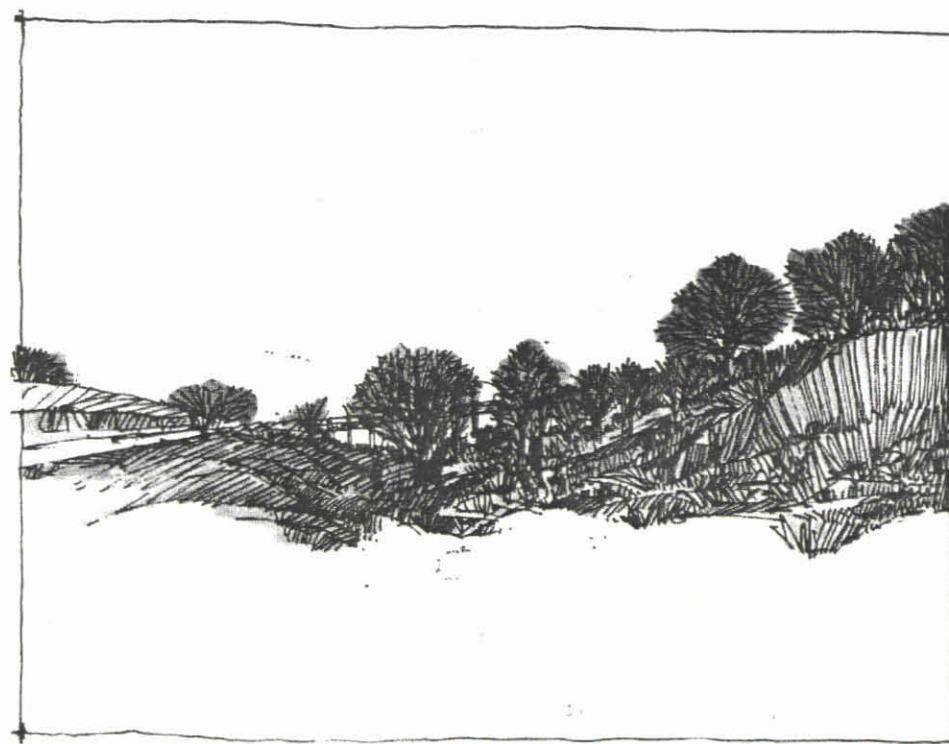
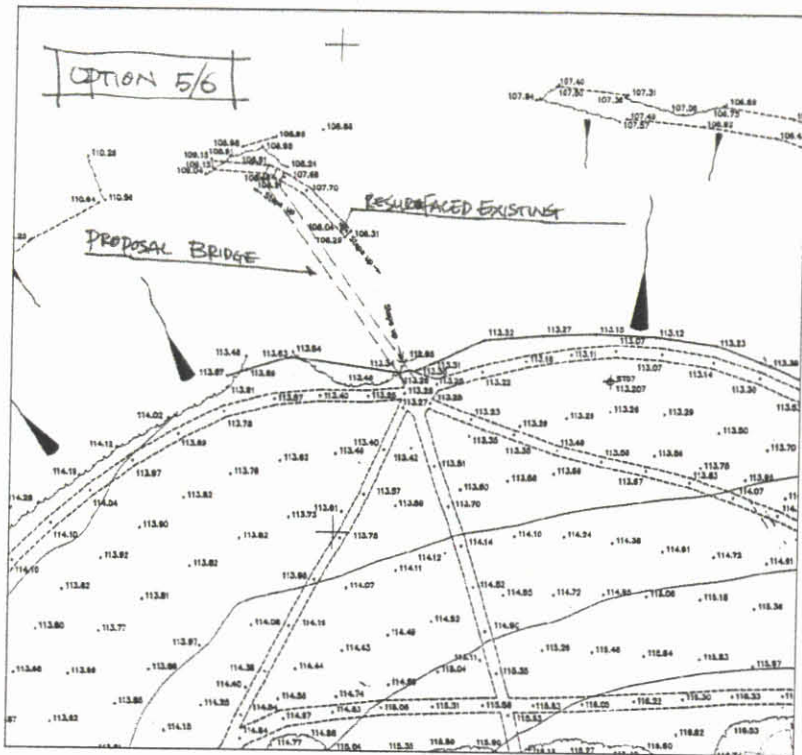


Figure 4.2 & 4.3: Photo of existing view, sketch of bridge across Castle Hill ditch



Option 5 - Western access point: Proposed bridge across Castle Hill ditch to replace existing steps

Scope:

- Proposed timber bridge to replace steps at western access point

Advantages:

- Provision of disabled access
- Control of further erosion

Disadvantages:

- Very long span of bridge because ditch is relatively wide in this location
- Bridge would cross ditch in a steep angle
- Visually very intrusive
- High cost implication
- Structural engineer necessary to develop design of bridge
- Foundations and fixing will cause relatively high direct impact on ancient monument; option likely to be unacceptable to EH

Figure 5.1: Plan view of option 5

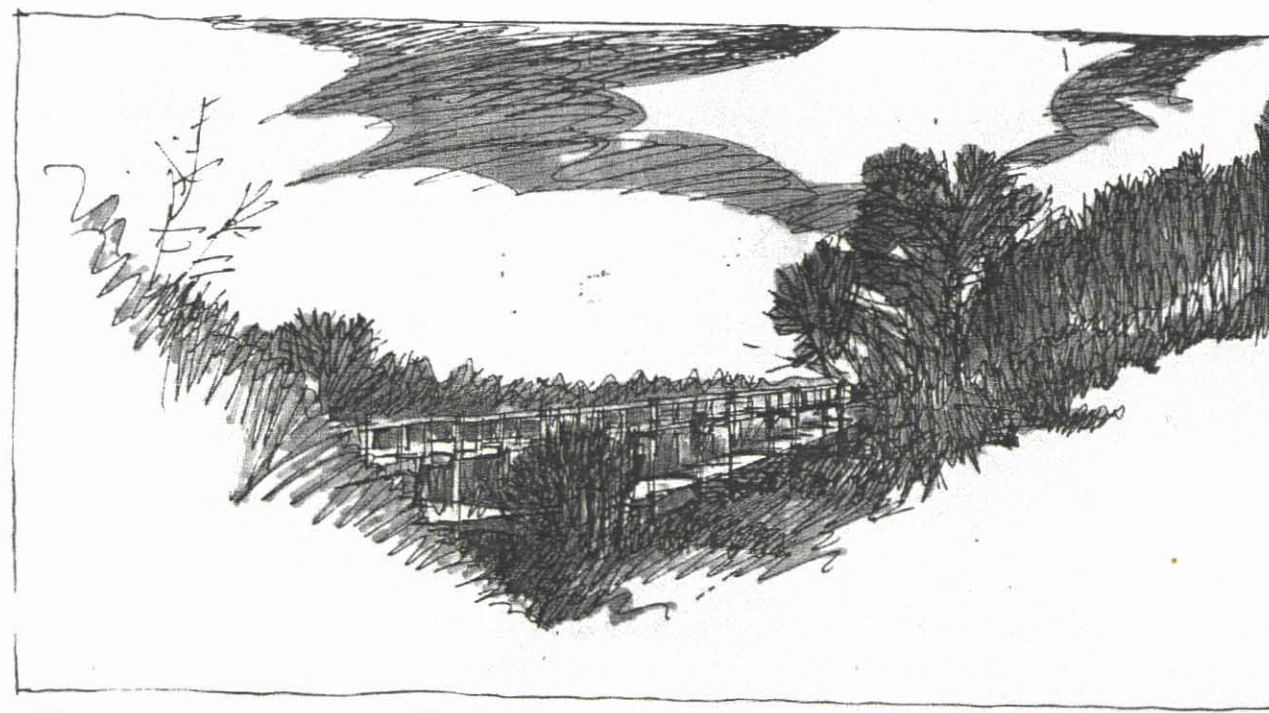


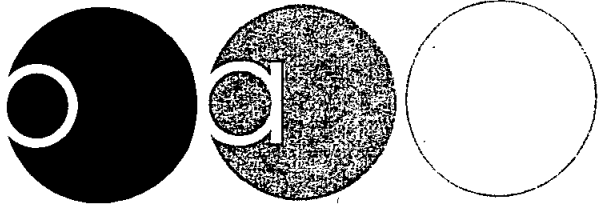
Figure 5.2 & 5.3: Photo of existing view, sketch of bridge across Castle Hill ditch at Western access point (Round Hill)

Conclusion:

Based on the assessment above option 3-'resurfacing of the maintenance track only' is the preferred option for the southern entrance. It is visually least intrusive, has minimum impact on the ancient monument and has a low cost implication. Although this option does not provide disabled access as such it avoids steps and should enable disabled people to access the monument if they are accompanied and supported by other people. It is suggested to raise the levels at the existing ramp across castle hill ditch in order to flatten gradient at steepest section at top part of the access track.

In respect of the western entrance option 6 - 'resurfacing of the existing steps' is the preferred solution as it is visually un-intrusive, has no impact on the ancient monument and is most cost effective. It is not sensible to accommodate disabled access at this point as option 5, if feasible at all, would have a very high cost implication as well as an adverse effect on the setting and make up of the ancient monument.

If it is proposed to provide disabled access as such option 4 appears most feasible as it blends in the landscape reasonably well. However, it has a high cost implication and a high impact on the ancient monument. It also has to be considered that a surfaced track would have to be provided to the starting point of the bridge.



Oxford Archaeology
Janus House
Osney Mead
Oxford
OX2 0ES
t: (01865) 263800
f: (01865) 793496
e: mail@oxfordarch.co.uk
w: www.oxfordarch.co.uk

24th March 2005

Mrs U Patel
DCMS
Architecture & Historic Environment Division(2)
2-4 Cockspur Street
London SW1Y 5DH

Dear Mrs Patel

Re: Scheduled Monument Application for Castle Hill, Oxfordshire SAM 208

Please find enclosed an application form submitted on behalf of the Northmoor Trust for consent for the erection of a deer-proof fence around the beech clump within this monument. The SMC form is accompanied by two copies of 2 drawings:
Figure 1 shows the location of the proposed works in relation to the monument and buried archaeology revealed by geophysical survey showing the area of the proposed works. (The trenches shown for reference are those excavated in 2003 with SMC).
Figure 2 shows the nature of the gates that are proposed at three locations along the fence.

Please also find enclosed 2 copies of a three-page document explaining the archaeological implications of the work, and the proposed mitigation methods, as discussed with C Welch, Inspector for English Heritage.

The protective fence will assist in the regeneration of the historic beech clump first planted in the 18th century, and thus the preservation of an important local landmark. There is also a growing Health and Safety issue, as a number of the standing beech trees are becoming unstable, and the sooner the clump is fenced off from public access the better.

We have already talked through our proposals with the English Heritage Inspector Chris Welch, who has advised us on the appropriate mitigation measures. He has also said that he will be happy to deal with this application as soon as you can send it through to him, so I would be very grateful if you would pass the papers to him as quickly as possible, and following receipt of his approval, process the application as speedily as you can.

Yours sincerely

Tim Allen

Director and Chief Executive:
David Jennings BA MIFA FSA
Private Limited Company Number: 1618597
Registered Charity Number: 285627
Registered Office: Oxford Archaeological Unit Ltd,
Janus House, Osney Mead, Oxford OX2 0ES

Proposed deer-proof fence at Castle Hill, Little Wittenham, Oxfordshire

1 Introduction

1.1 The Northmoor Trust, who own and manage the Scheduled Ancient Monument of Castle Hill (Oxfordshire SAM 180), propose to erect a deer-proof fence around the beech clump in the centre of the hillfort, both to protect the trees from further damage, and to exclude the public from the clump due to the danger from aged falling trees.

A plan showing the proposed location of the fence is provided on Figure 1.

1.2 The fence posts, driven 0.6 - 0.9 m into the ground, will be erected at intervals of approximately 3.5 m along the proposed line. The larger posts will be 0.15 m in diameter, the smaller ones only 0.10 m, so that the percentage destruction along the fence line will be between 3% and 4%.

2 Archaeological background information

2.1 Information on the known archaeology of the hillfort interior was provided in the Castle Hill Project Design (OA 2003). Aerial photographs of the hillfort interior held at the NMR have not revealed any significant cropmarks. A geophysical survey carried out by English Heritage in 2002 however indicated the major features within the defences (Payne 2002), and this was supplemented by trenching undertaken by Oxford Archaeology in 2003. A Post Excavation Assessment and Updated Project Design has now been produced summarising the results of the trenching (Lamdin-Whymark and Allen 2005). The location of the proposed fence in relation to the geophysical anomalies and excavated trenches is shown in Figure 1.

2.2 Archaeological features detected by geophysical survey around the edge of the clump were few. The only certainly sensitive locations relating to the proposed fence are where the hilltop enclosure ditch enters the clump on the south and east, and where it runs along the edge of the clump on the north. It should however be noted that no geophysical survey was possible in the 2-3m immediately adjacent to the woodbank surrounding the clump, as recent tree growth has extended beyond the bank (Payne 2002, Figure 4). Further discrete features like the pits found at the north end of Trench 3 could therefore exist in this area. The trees are relatively young, and their roots may therefore not yet have caused much damage to any surviving archaeological features.

2.3 Excavations around the hilltop revealed only a few features that were not revealed by the geophysical survey (see Trench 6), and no postholes at all. This may genuinely reflect the character of use of the hilltop, or may be the result of the ploughing of the hilltop from the late medieval period to the late 20th century, which has truncated archaeological features both within the clump and outside. Whatever the reason, it is unlikely that many small and originally shallow features dug into the hilltop still survive.

2.4 The depth of topsoil was established in several locations around the top of the hillfort, namely:

the north end of Trench 3 (Figure 3)	0.15-0.20 m
the west end of Trench 4 (Figure 4)	0.22-0.28 m
the north end of Trench 5 extension (Figure 5)	0.25-0.30 m
the south side of Trench 6 (Figure 6)	0.20 m

2.5 These sections demonstrate that the depth of topsoil/ploughsoil immediately outside the boundary of the clump varies from 0.15 to 0.28 m. The depth within the clump is similar, but a greater depth of soil cover (0.4 - 0.5 m) is present on the woodbank marking the edge of the clump. The woodbank and the planting furrows crossing the interior of the clump are themselves unusual survivals of the 18th century landscaping of the hilltop, and as such an important part of the history of the Scheduled monument.

3 Proposed route and proposed mitigation measures associated with the construction of the deer fence

3.1 Following discussion with the English Heritage Inspector Chris Welch it is proposed to locate the fence along the top of the woodbank surrounding the clump wherever possible, to minimise the depth to which driven posts will penetrate the ground, and any potential archaeological deposits, beneath.

3.2 Should it be necessary to clear any trees outside the woodbank around the edge of the clump for access, trees will as far as possible be sawn off at ground level and then left to rot *in situ* rather than being grubbed out. Should any substantial trees need to be felled and removed, or any fallen trees need to have their roots excavated, this will be carried out under archaeological supervision and any exposed archaeological features planned and recorded.

3.3 If any significant areas are cleared (upwards of 120 sq. m), the opportunity will be taken to carry out a geophysical survey of this area, in order to add to the English Heritage survey carried out in 2002, and to establish whether any significant archaeological features exist along the proposed line of the fence. This will be carried out by volunteers with experience of geophysical survey using a Geoscan 256 gradiometer, and the survey will be supervised and the results interpreted with the assistance of Alister Bartlett.

3.4 If significant buried archaeological features are revealed by survey along the line of the fence, the fence posts should if possible be spaced to miss them.

3.5 At the three gate locations, the holes for the gate posts (six in all), and the shallow trenches linking each pair of gate posts, will be excavated by hand and recorded by staff from Oxford Archaeology. Archaeological excavation and recording will be carried out following the procedures laid down in the OA Fieldwork Manual (ed. Wilkinson 1992). A drawn record of any archaeological features will be made at an appropriate scale, and a photographic record made. The exact locations of the hand-excavated interventions will be located by the OA survey team.

3.6 Should any finds and/or features be discovered, these will be written up by Oxford Archaeology as instructed by the Northmoor Trust together with the discoveries from the trenches excavated in 2003, through an addendum to the Castle Hill Post-Excavation Assessment and Updated Project Design (Lamdin-Whymark and Allen 2005) agreed with the English Heritage Inspector Chris Welch.

4 Bibliography

Lamdin-Whymark, H, and Allen, T, 2005 *Castle Hill, Little Wittenham, Oxfordshire: Post-excavation Assessment and Updated Project Design*, unpublished client report prepared by Oxford Archaeology on behalf of the Northmoor Trust for English Heritage.

OA 2003 *Project Design for Castle Hill, Wittenham Clumps, Oxfordshire*, unpublished client report prepared on behalf of the Northmoor Trust for English Heritage.

Payne, A, 2002 *Castle Hill or Sinodun Hill Camp, Little Wittenham, Oxfordshire: Report on Geophysical Survey, June 2002*, Centre for Archaeology report 70/2002.

Wilkinson, D, (ed) 1992 *Oxford Archaeological Unit Fieldwork Manual*.

T Allen

March 2005

Application for Scheduled Monument Consent

Ancient Monuments and Archaeological Areas Act 1979 (as amended) Section 2

To be completed by or on behalf of the applicant in BLOCK CAPITALS or typescript.

1. Applicant

Full name	IAN ROWLAND-HILL, CHIEF EXECUTIVE		
Address	NORTHMOOR TRUST,		
	LITTLE WITTENHAM		
	NR ABINGDON, OXFORDSHIRE		
Postcode	OX14 4RA	Tel No.	01865 407792

2. Occupier of the Monument (if not the applicant)

Full name	N/A		
Address	N/A		
Postcode		Tel No.	

3. Monument to which the application relates

Name (if any) of the monument	CASTLE HILL, LITTLE WITTENHAM		
Address or location	WITTENHAM CLUMPS,		
	LITTLE WITTENHAM.		
	NR ABINGDON		
	OXFORDSHIRE		
County		National Grid Reference	SU 5695 9262
Monument Number	OXFORDSHIRE SAM 208		

4. Description of the proposed works

ERECTION OF A DBER-ROOF FENCE AROUND THE BEECH CLUMP IN THE CENTRE OF THE HILLFORT. THE FENCE IS TO ASSIST REGENERATION OF THE CLUMP. IT WILL BE 350M LONG (APPROX), WITH POSTS AT 3.5M INTERVALS, C.25 WILL BE 150MM DIAMETER, C.70 WILL BE 120MM DIAMETER. POSTS WILL BE DRIVEN 0.6-0.9m INTO THE GROUND. THE FENCE WILL FOLLOW THE LINE OF THE ORIGINAL BANK AROUND THE 18TH-CENTURY CLUMP TO MINIMISE DAMAGE BELOW GROUND. THREE GATES WILL REQUIRE EXCAVATION OF 6 HOLES 0.5m SQUARE AND 0.7m DEEP, WITH A SLOT 1.5m LONG AND 0.2m DEEP BETWEEN THE PARTS. THESE WILL BE DUG ARCHAEOLOGICALLY BY HAND. THE FENCE LINE WILL DEVIATE FROM THE BANK ON THE EAST TO EXCLUDE THE 'POPH TREE'.

5. List of plans and drawings accompanying the application

FIGURE 1 - PLAN OF HILLFORT SHOWING FENCE LINE AND GATES IN RELATION TO ENGLISH HERITAGE GEOPHYSICAL SURVEY OF INTERIOR
FIGURE 2 - DIAGRAM OF MILTON KEYNES SELF-CLOSING GATE.
(2 COPIES)

3-PAGE DOCUMENT SETTING OUT THE IMPLICATIONS OF THE PROPOSAL AND THE PROPOSED ARCHAEOLOGICAL MITIGATION.
(2 COPIES)

6. Any other information relevant to the application

OXFORD ARCHAEOLOGY WILL LAISE WITH THE NORTHMOOR TRUST & THE CONTRACTOR ON SITE TO ENSURE THE LINE OF THE FENCE FOLLOWS THE 18TH CENTURY BANK. SHOULD ANY EXTENSIVE STRIPS BE CLEARED FOR THE WORK, GEOPHYSICAL (MAGNETOMETRIC) SURVEY WILL BE UNDERTAKEN PRIOR TO ERECTION OF THE FENCE THIS WILL BE CARRIED OUT USING A GEOSCAN 256 BY VOLUNTEERS SUPERVISED BY A BART GITT, WHO WILL ALSO PROCESS THE RESULTS. A COPY OF THE REPORT WILL BE SENT TO ENGLISH HERITAGE.
OXFORD ARCHAEOLOGY WILL SURVEY IN THE POSITIONS OF THE GATE POST-HOLES, AND WILL EXCAVATE & RECORD THESE IN ACCORDANCE WITH THE OXFORD FIELDWORK MANUAL (ED. WILKINSON 1992). ANY REVEALED FEATURES OR FINDS WILL BE WRITTEN UP TOGETHER WITH THE MATERIAL FROM THE 2003 CASTLE HILL TRENCHES.

I/We hereby apply for scheduled monument consent for the works described in this application and shown on the accompanying plans and drawings.

Signature J Green Date 02/03/2005

*on behalf of THE NORTHMOOR TRUST

*Where the application is being dealt with by an agent to whom correspondence should be sent, state the:

Name of Agent	<u>T. G. ALLEN</u>	
Address of Agent	<u>OXFORD ARCHAEOLOGY</u>	
	<u>JANUS HOUSE, OSNEY MEAD,</u> <u>OXFORD</u>	
Postcode	<u>OX2 0PS</u>	Tel No. <u>01865 263800</u>

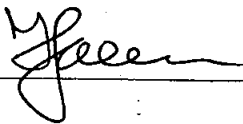
NOTE - The Secretary of State may refuse to entertain an application for scheduled monument consent unless it is accompanied by one or other of the following certificates signed by or on behalf of the applicant.

Forms of Certificate
for the Purposes of Paragraph 2(1) of Schedule 1 to the Act

Certificate in accordance with paragraph 2(1)(a)

It is hereby certified that no person other than the applicant was the owner (x) of the monument to which the accompanying application relates at the beginning of the period of twenty-one days which ended on the date of the application.

Signature _____



Date _____

18/03/2005.

Certificate in accordance with paragraph 2(1)(b)

It is hereby certified that the applicant has given the requisite notice (w) of the accompanying application to all the persons other than the applicant who, at the beginning of the period of twenty-one days which ended on the date of the application, were owners (x) of the monument to which the application relates, namely (y):

Name

Address

Signature _____

Date _____

Certificate in accordance with paragraph 2(1)(c)

It is hereby certified -

(1) that the applicant is unable to issue a certificate in accordance with either paragraph 2(1) (a) or 2(1) (b) of Schedule 1 to the Ancient Monuments and Archaeological Areas Act 1979;

(2) that the applicant has given the requisite notice (w) of the accompanying application to the following persons who, at the beginning of the period of twenty-one days which ended on the date of the application, were owners (x) of the monument to which the application relates, namely (y):

Name	Address
------	---------

and

(3) that the applicant has taken such steps as are reasonably open to him to ascertain the names and addresses of the remainder of the persons who at the beginning of that period were owners (x) of that monument and has been unable to do so.

Signature _____ Date _____

Certificate in accordance with paragraph 2(1)(d)

It is hereby certified that the applicant is unable to issue a certificate in accordance with paragraph 2(1) (a) of Schedule 1 to the Ancient Monuments and Archaeological Areas Act 1979, but has taken such steps as are reasonably open to him to ascertain the names and addresses of the other persons who, at the beginning of the period of twenty-one days which ended on the date of the application, were owners (x) of the monument to which the application relates and has been unable to do so.

Signature _____ Date _____

(w) Form AM112A

(x) "Owner means a person who is for the time being owner in respect of the fee simple in the monument or is entitled to a tenancy of the monument granted or extended for a term of years certain, of which not less than seven years remain unexpired.

(y) Insert names and addresses.

Architecture and Historic
Environment Division
2-4 Cockspur Street
London SW1Y 5DH
www.culture.gov.uk

Tel 020 7211 2362
Fax 020 7211 6130
urvashi.patel@
culture.gsi.gov.uk

LWCH 07

Mr. Tim Allen
Oxford Archaeology
Janus House
Osney Mead
Oxford
OX2 0ES



Your Ref
Our Ref HSD 9/2/5155 & 5156
16 May 2008



Dear Mr. Allen,

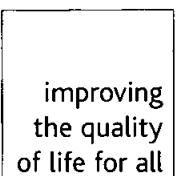
**ANCIENT MONUMENTS AND ARCHAEOLOGICAL AREAS ACT 1979 (AS AMENDED) –SECTION 2
PROPOSED WORKS AT SINODUM HILL CAMP, LITTLE WITTENHAM, SOUTH OXFORDSHIRE, OXFORDSHIRE
COUNTY MONUMENT NO. OXON 208
APPLICATION BY THE NORTHMOOR TRUST**

1. I refer to your letter dated 25 April 2008 which you advised that you wish to amend your original application for scheduled monument consent dated 02 December 2002, submitted in respect of proposed works to the above named scheduled monument, for which consent was granted by the Department's letter of 02 April 2003.

2. The requested amendment is for a 1 year extension to the time limit placed on the submission of a report on the works as detailed in condition 3(vi), which reads as follows:

" A report on the works shall be submitted to an appropriate journal in a form suitable for publication within five years of the completion of the fieldwork permitted by this consent. Copies of the submitted report shall be sent to the Inspector of Ancient Monuments and to the Oxfordshire Sites and Monuments Record."

3. Mr. Chris Welch, Inspector of Ancient Monuments at English Heritage, has confirmed in his e-mail of the 13 May 2008 to this Department that he is happy for the amendment to be added to the original consent.



4. A copy of this letter is sent to:

Mr. Chris Welch
Inspector of Ancient Monuments
English Heritage
SE Region
Eastgate Court
195-205 High street
Guildford
Surrey
GU1 3EH;

Mr. Dan Bashford
Field Monument Warden
Alpha Cottage
The Millham
West Hendred
Wantage
OX12 8RN;

and to

Mr. Brian Durham
Oxford City Archaeologist
Oxford City Council
Ramsey House
10 St. Ebbes
Oxford, OX1 1PT.

Yours faithfully



URVASHI PATEL (Mrs.)
Heritage Protection Branch



LITTLE WITENHAM
NEW TREE PLANTING
CASTLE HILL

Box 1 FILE 2

A. REPORT

FILMING INSTRUCTIONS

Submitter OASouth

No. of scan disk copies: ~~2~~ 3

Headings

Site information

Line 1: [OASouth] County[Oxon] Parish:[Little Wittenham]

Site[Castle Hill New Tree Planting] Site code[LWCHL 07]

Line 2: Excavators name[D Dodds]

Line 3:

Classification of material

Tick if present

Index to archive	
Introduction	
A:Final Report	✓
A:Publication Report	
B:Site Data – Text: Diary/Daybook/Fieldnotes	
B: Site Data – Text: General Summaries	
B: Site Data – Text: Primary Context Records	
B: Site Data – Text: Synthesised Context Records	
B: Site Data – Text: Survey Reports	
B: Site Data – Text: Catalogue of Drawings	
B: Site Data – Text: Primary Drawings	
B: Site Data – Text: Synthesised Drawings	
C: Finds Data – Text: Primary Finds Data	
C: Finds Data – Text: Synthesised Finds Data	
C: Finds Data – Text: Specialist Reports	
C: Finds Data – Text: Box/Bag List	
D: Catalogue of Photos/Slides/Videos/X--rays	
E: Environmental/Ecofact Data: Primary Records	
E: Environmental/Ecofact Data: Synthesised Records	
E: Environmental/Ecofact Data: Specialist Reports	
F: Documentary	
F: Press and Publicity	
G: Correspondence	
H: Miscellaneous	

New Tree Planting at Castle Hill
Little Wittenham
Oxfordshire



**Archaeological
Watching Brief Report**



January 2007

Client: Northmoor Trust

Issue N^o: 1
OA Job N^o: 3498
Planning Ref N^o:
NGR: SU 565 927

Client Name: Northmoor Trust

Client Ref No:

Document Title: New Tree Planting at Castle Hill, Little Wittenham,
Oxfordshire

Document Type: Watching Brief

Issue Number: 1

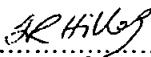
National Grid Reference: SU 565 927
Planning Reference:

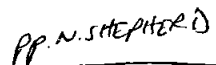
OA Job Number: 3498
Site Code: LWCHL 07
Invoice Code: LWCHLWB
Receiving Museum: Oxfordshire County Museums Service
Museum Accession No: OXCMS:2003.82

Prepared by: Mike Sims
Position: SWD Supervisor
Date: 15th January 2007

Checked by: Dan Dodds
Position: Head of Small Works
Date: 17th January 2007

Approved by: Nick Shepherd
Position: Head of Field work
Date: 17th January 2007

Signed:  SENIOR PROJECT MANAGER



Document File Location H:\PROJECTS\Oxfordshire OX\South Oxfordshire
SO\7401 Castle Hill Wittenham Clumps\wbREP.doc
Graphics File Location servergo/oaupubs2/1_thru_q/L_codes/LWCHLWB*LWC
HL07*Castle Hill*HRB*I.1.07
Illustrated by Hannah Brown

Disclaimer:

This document has been prepared for the titled project or named part thereof and should not be relied upon or used for any other project without an independent check being carried out as to its suitability and prior written authority of Oxford Archaeology being obtained. Oxford Archaeology accepts no responsibility or liability for the consequences of this document being used for a purpose other than the purposes for which it was commissioned. Any person/party using or relying on the document for such other purposes agrees, and will by such use or reliance be taken to confirm their agreement to indemnify Oxford Archaeology for all loss or damage resulting therefrom. Oxford Archaeology accepts no responsibility or liability for this document to any party other than the person/party by whom it was commissioned.

Oxford Archaeology

© Oxford Archaeological Unit Ltd 2007

Janus House
Osney Mead
Oxford OX2 0ES
t: (0044) 01865 263800
f: (0044) 01865 793496

e: info@oxfordarch.co.uk
w: www.oxfordarch.co.uk

Oxford Archaeological Unit Limited is a Registered Charity No: 285627

New Tree Planting at Castle Hill, Little Wittenham, Oxfordshire

ARCHAEOLOGICAL WATCHING BRIEF REPORT

CONTENTS

Summary	1
1 Introduction.....	1
1.1 Location and scope of work.....	1
1.2 Geology and topography.....	1
1.3 Archaeological and historical background	1
2 Project Aims and Methodology	2
2.1 Aims.....	2
2.2 Methodology.....	2
3 Results	2
3.1 Description of deposits.....	2
3.2 Finds	3
3.3 Palaeo-environmental remains.....	3
4 Discussion and Conclusions	3
Appendix 1 Archaeological Context Inventory.....	4
Appendix 2 Bibliography and References.....	4
Appendix 3 Summary of Site Details.....	4

LIST OF FIGURES

- Fig. 1 Site location
Fig. 2 Site plan showing location of tree planting pits

SUMMARY

On January 9th 2007, Oxford Archaeology (OA) carried out an archaeological watching brief at Castle Hill, Little Wittenham, Oxfordshire (NGR: SU 565 927). The work was commissioned by the North Moor Trust in advance of the excavation of 45 tree planting slots within the area of the Scheduled Monument. The watching brief revealed that all the slots were wholly contained within the existing layer of topsoil and tree mould and no underlying deposits were exposed. No significant archaeology was encountered.

1 INTRODUCTION

1.1 Location and scope of work

1.1.1 On January 2007, Oxford Archaeology (OA) carried out an archaeological watching brief at Castle Hill, Little Wittenham, Oxfordshire (NGR: SU 565 927). The work was commissioned by the North Moor Trust in respect of an application for Scheduled Monument Consent for the excavation of tree planting slots within the scheduled area.

1.1.2 OA prepared an Assessment of the Impact of New Planting Proposal detailing the archaeological implications of the work and proposed mitigation methods. Following discussions with Chris Welsh, the English Heritage Inspector a programme of mitigation measures was agreed.

1.2 Geology and topography

1.2.1 The site is situated approximately 5 km north-west of the town of Didcot (Fig. 1). The area under evaluation lies within the deer fenced enclosure spanning a Late Bronze Age Enclosure ditch at the summit of a hill known as "Castle Hill", located at Little Wittenham, Oxfordshire. The site stands at c105m above OD and is 0.7 hectares in area. The underlying geology is alluvium over Totternhoe stone/Lower chalk Geological Survey of England and Wales sheet no 254).

1.3 Archaeological and historical background

1.3.1 A short archaeological background to the watching brief was prepared using an English Heritage (EH) document and is reproduced below.

1.3.2 Castle Hill (SAM Oxfordshire 208), is an Iron Age hillfort defended by multiple ramparts and a deep intervening ditch. The internal area of the fort is approximately 4.5 hectares and is largely under grass ley with the exception of the 0.7 hectare "clump" of beech woodland on the flatter summit area of the hill planted in the 1790s. The defences are placed down the sides of the hill and much of the internal area consists of sloping ground. Ploughing in the past within the hillfort has revealed pieces of pottery from at least the early Iron Age onwards. The hillfort was the focus

for a larger region, and around its outer ramparts traces of an early Iron Age settlement has been found. The major valley fort of Dyke Hills (SAM Oxfordshire 17), lies less than a kilometre to the north of Castle Hill, on the opposite bank of the Thames.

- 1.3.3 The land containing the hillfort forms part of the 101 hectare Little Wittenham Nature Reserve owned and managed by the Northmoor Trust. This area, together with adjacent wood-capped Round Hill to the west, is collectively known as Wittenham Clumps. (EH, 2002).

2 PROJECT AIMS AND METHODOLOGY

2.1 Aims

- 2.1.1 To identify and record the presence or absence, extent, condition, quality and date of archaeological remains in the areas affected by the development.
- 2.1.2 To signal, before the destruction of the material in question, the discovery of a significant archaeological find, for which the resources allocated are not sufficient to support a treatment to a satisfactory and proper standard. All groundworks will be halted until the remains have been suitably investigated and dealt with by the attending archaeologist.
- 2.1.3 To make available the results of the archaeological investigation.

2.2 Methodology

- 2.2.1 The tree planting slots were hand excavated using a spade. This was inserted the full depth of the blade and levered from side to side to produce a tapered slot 0.2 m across and 0.3 m deep, measuring 0.12 m at the widest point.
- 2.2.2 A plan showing the location of the tree planting slots was produced at a scale of 1:500 (Fig. 2). A representative sample of the planting slots were photographed using colour slide and black and white print film. A general photographic record of the work was also made Recording followed procedures detailed in the *OA Field Manual* (ed. D Wilkinson, 1992).

3 RESULTS

3.1 Description of deposits

- 3.1.1 The exposed topsoil was a layer of dark grey-brown silt loam (1000) becoming lighter in colour towards the southern edge of the site. All the excavations were wholly contained within this layer and no other stratigraphy was exposed.

3.2 Finds

3.2.1 No dating evidence earlier than the late 20th century was recovered during the course of the watching brief. This was evaluated on site but was not retained.

3.3 Palaeo-environmental remains

3.3.1 No deposits suitable for palaeo-environmental sampling were encountered during the course of the watching brief.

4 DISCUSSION AND CONCLUSIONS

4.1.1 The soil structure exposed during the course of the watching brief was consistent with accumulated topsoil and leaf mould. No archaeologically significant deposits or structures were encountered during the watching brief.

APPENDICES

APPENDIX 1 ARCHAEOLOGICAL CONTEXT INVENTORY

<i>Context</i>	<i>Type</i>	<i>Depth</i>	<i>Comments</i>	<i>Finds</i>	<i>Date</i>
1000	Layer	> 0.35 m	Topsoil and leaf mould	Cans, plastic wrappers	Post-medieval

APPENDIX 2 BIBLIOGRAPHY AND REFERENCES

EH, 2002 *Castle Hill, Little Wittenham, Oxfordshire : Report on Geophysical Survey*

IFA, 2001 *Standard and Guidance for Archaeological Watching Briefs*

OAU, 1992 *Field Manual (1st edition ed. Wilkinson D)*

APPENDIX 3 SUMMARY OF SITE DETAILS

Site name: Castle Hill Clump, Little Wittenham, Oxfordshire

Site code: LWCHL06

Grid reference: SU 565 927

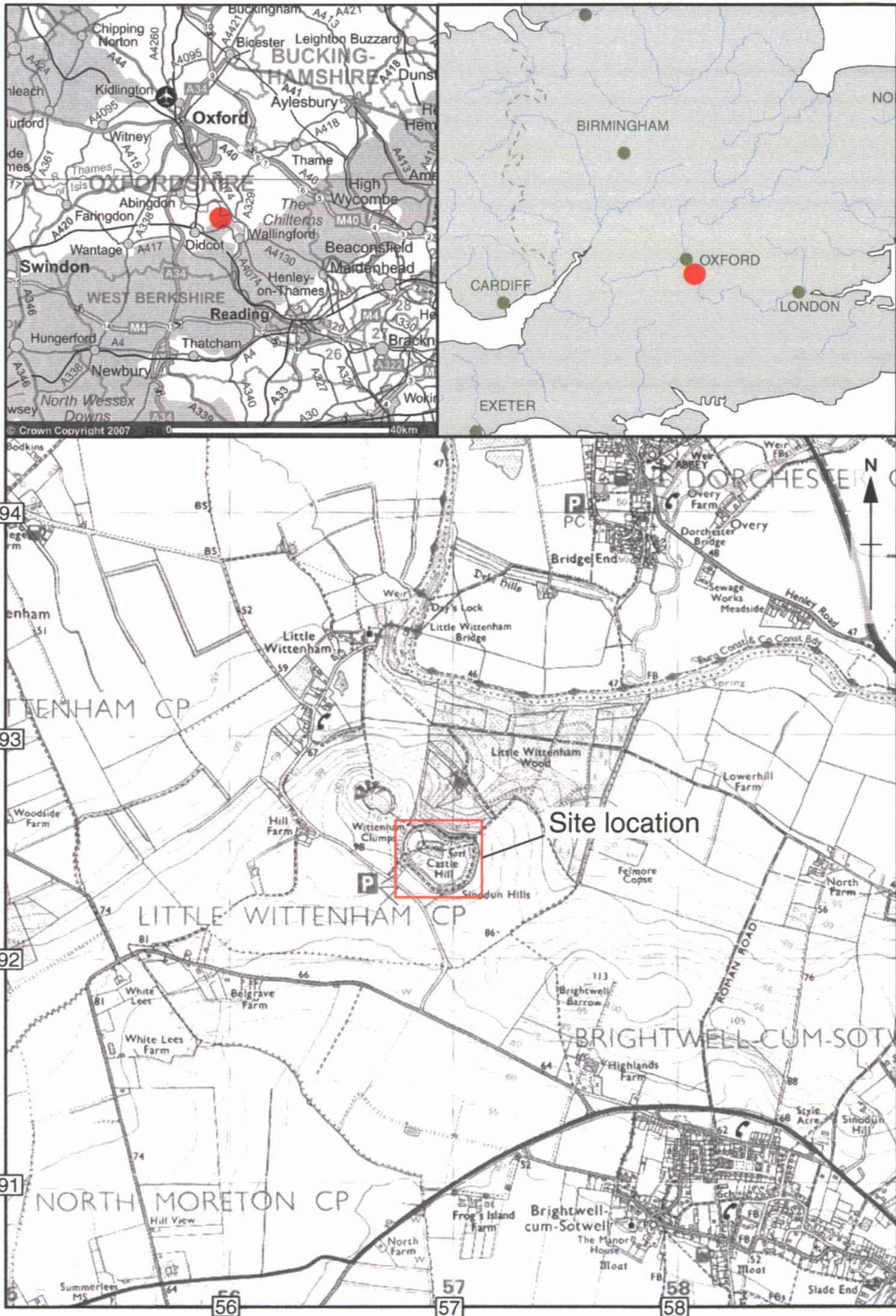
Type of watching brief: 45 Hand dug tree planting slots.

Date and duration of project: 9th January 2007, 1 day

Area of site: 0.8 hectares

Summary of results: All excavations were within topsoil/leaf mould, no archaeology was encountered.

Location of archive: The archive is currently held at OA, Janus House, Osney Mead, Oxford, OX2 0ES, and will be deposited with Oxfordshire County Museums Service in due course, under the following accession number: OXCMS:2003.82



Reproduced from the Landranger 1:50,000 scale by permission of the Ordnance Survey on behalf of The Controller of Her Majesty's Stationery Office
© Crown Copyright 1999. All rights reserved. Licence No. AL 100005569

Figure 1: Site location

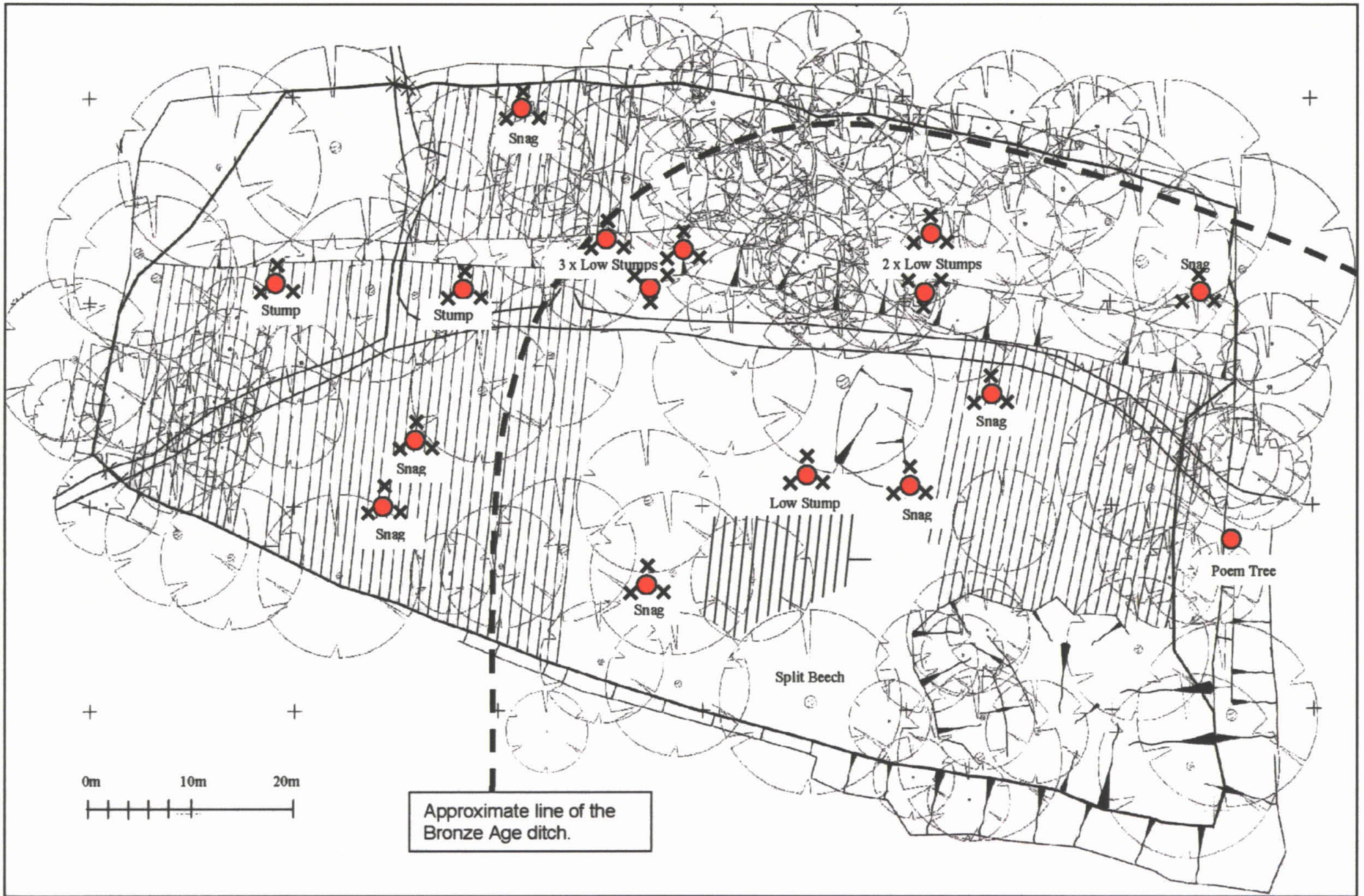


Figure 2: Site plan



Oxford Archaeology

Janus House
Osney Mead
Oxford OX2 0ES

t: (0044) 01865 263800
f: (0044) 01865 793496
e: info@oxfordarch.co.uk
w: www.oxfordarch.co.uk



Oxford Archaeology North

Storey Institute
Meeting House Lane
Lancaster LA1 1TF

t: (0044) 01524 541000
f: (0044) 01524 848606
e: lancinfo@oxfordarch.co.uk
w: www.oxfordarch.co.uk



Director: David Jennings, BA MIFA FSA

Oxford Archaeological Unit is a
Private Limited Company, N^o: 1618597
and a Registered Charity, N^o: 285627

Registered Office:

Oxford Archaeological Unit
Janus House, Osney Mead, Oxford OX2 0ES



Oxford Archaeology

Janus House
Osney Mead
Oxford OX2 0ES

t: (0044) 01865 263800
f: (0044) 01865 793496
e: info@oxfordarch.co.uk
w: www.oxfordarch.co.uk



Oxford Archaeology North

Storey Institute
Meeting House Lane
Lancaster LA1 1TF

t: (0044) 01524 541000
f: (0044) 01524 848606
e: lancinfo@oxfordarch.co.uk
w: www.oxfordarch.co.uk



Director: David Jennings, BA MIFA FSA

Oxford Archaeological Unit is a
Private Limited Company, N^o: 1618597
and a Registered Charity, N^o: 285627

Registered Office:

Oxford Archaeological Unit
Janus House, Osney Mead, Oxford OX2 0ES

LITTLE WITTINGHAM
NEW TREE PLANTING
CASTLE HILL
LWCHL 07

BOX 1 FILE 3

B PRIMARY CONTEXT DATA



OXFORD ARCHAEOLOGICAL UNIT

OXFORD ARCHAEOLOGY, JANUS HOUSE, OSNEY MEAD, OXFORD, OX2 OES

FILMING INSTRUCTIONS

Submitter OASouth

No. of scan disk copies: ~~2~~ 3

Headings

Site information

Line 1: [OASouth] County[Oxon] Parish:[Little Wittenham]

Site[Castle Hill New Tree Planting] Site code[LWCHL 07]

Line 2: Excavators name[D Dodds]

Line 3:

Classification of material

Tick if
present

Classification of material	Tick if present
Index to archive	
Introduction	
A:Final Report	
A:Publication Report	
B:Site Data – Text: Diary/Daybook/Fieldnotes	
B: Site Data – Text: General Summaries	
B: Site Data – Text: Primary Context Records	<input checked="" type="checkbox"/>
B: Site Data – Text: Synthesised Context Records	
B: Site Data – Text: Survey Reports	
B: Site Data – Text: Catalogue of Drawings	
B: Site Data – Text: Primary Drawings	
B: Site Data – Text: Synthesised Drawings	
C: Finds Data – Text: Primary Finds Data	
C: Finds Data – Text: Synthesised Finds Data	
C: Finds Data – Text: Specialist Reports	
C: Finds Data – Text: Box/Bag List	
D: Catalogue of Photos/Slides/Videos/X--rays	
E: Environmental/Ecofact Data: Primary Records	
E: Environmental/Ecofact Data: Synthesised Records	
E: Environmental/Ecofact Data: Specialist Reports	
F: Documentary	
F: Press and Publicity	
G: Correspondence	
H: Miscellaneous	



Oxford Archaeology

WATCHING BRIEF RECORD

SITE CODE LWCHL07

SITE NAME Dittenham Clamps, Castle Hill

DATE 9/1/07

NGR

SO 565 927

County

OXON

Start Time

0800

Finish Time

12.00

Milage

Previous Visit

Visit By

missing

Type of construction work

Excavation

Contacts made

Chris Parker

Archaeology present?

Yes:

No:

Undated:

Other:

COMMENTS

On site at Castle Hill in order to monitor excavation of 45 tree planting planting holes. (see enclosed plan for location.)

Holes created by use of spade to full ~~depth~~ depth (0.3) and levering side to side to create a wedge shaped slot, no spoil was removed. After planting of ~~the~~ tree chip edges of hole heeled back over.

All holes were wholly contained within the topsoil / leafmold layer, a very dark grey silt loam which with no other deposits observed.

Records?

Sample photos.



CONTEXT RECORD

Context No.

1000

SITE LWCHL 07

ADDITIONAL SHEETS:

TYPE Lager

Trench

Context Type: Deposit / Cut / Structure

Check Lists:

Site sub-div

Overlain by:

DEPOSIT:

Structure No.

Abutted by:

1. compaction
2. colour
3. composition
4. inclusion
5. thickness
6. extent
7. comments
8. method & conditions

Plan No.

Cut by:

Filled by:

Section No.

Same as:

Part of:

CUT:

1. shape in plan
2. base/sides/top profile
3. dimension and depth
4. sketch
5. truncation
6. fill nos
7. other comments

Co-Ordinates

Consists of:

Overlies:

Level

Butts:

MASONRY:

Slide No.

Cuts:

1. materials
2. size of bricks etc
3. finish of stones
4. coursing/bond
5. form
6. faces
7. bond
8. dimensions as found
9. other comments

Neg No.

Fill of:

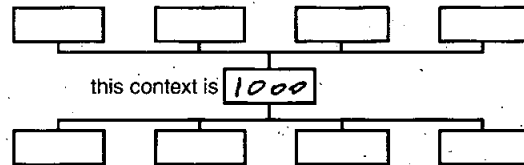
Matrix location

Relationships uncertain

Description (See check lists):

- 1) Friable
- 2) Dark grey brown
- 3) Silt loam
- 4) High humic content
- 5) Depth > 0.35m
- 6) Throughst etc.

STRATIGRAPHIC MATRIX



Interpretation/Discussion:

Topsoil and turf.
Mixture of turf loam and leaf mould.

Modern drinks can, plastic wrappers
observed but not retained.

Finds (tick): None [] Pot [] Bone [] Flint [] Stone [] Burnt stone [] Glass []
Metal [] CBM [] Wood [] Leather [] Plastic [x]

 Small FindsRecorder *WJ* Samples

Date 9/1/07

 Building Materials

Initials

LITTLE WITTENHAM
NEW TREE PLANTING
CASTLE HILL
LWCHL 07

Box 1 FILE 3

B PRIMARY DRAWINGS

OXFORD ARCHAEOLOGY, JANUS HOUSE, OSNEY MEAD, OXFORD, OX2 OES

FILMING INSTRUCTIONS

Submitter OASouth

No. of scan disk copies: 23

Headings

Site information

Line 1: [OASouth] County[Oxon] Parish:[Little Wittenham]

Site[Castle Hill New Tree Planting] Site code[LWCHL 07]

Line 2: Excavators name[D Dodds]

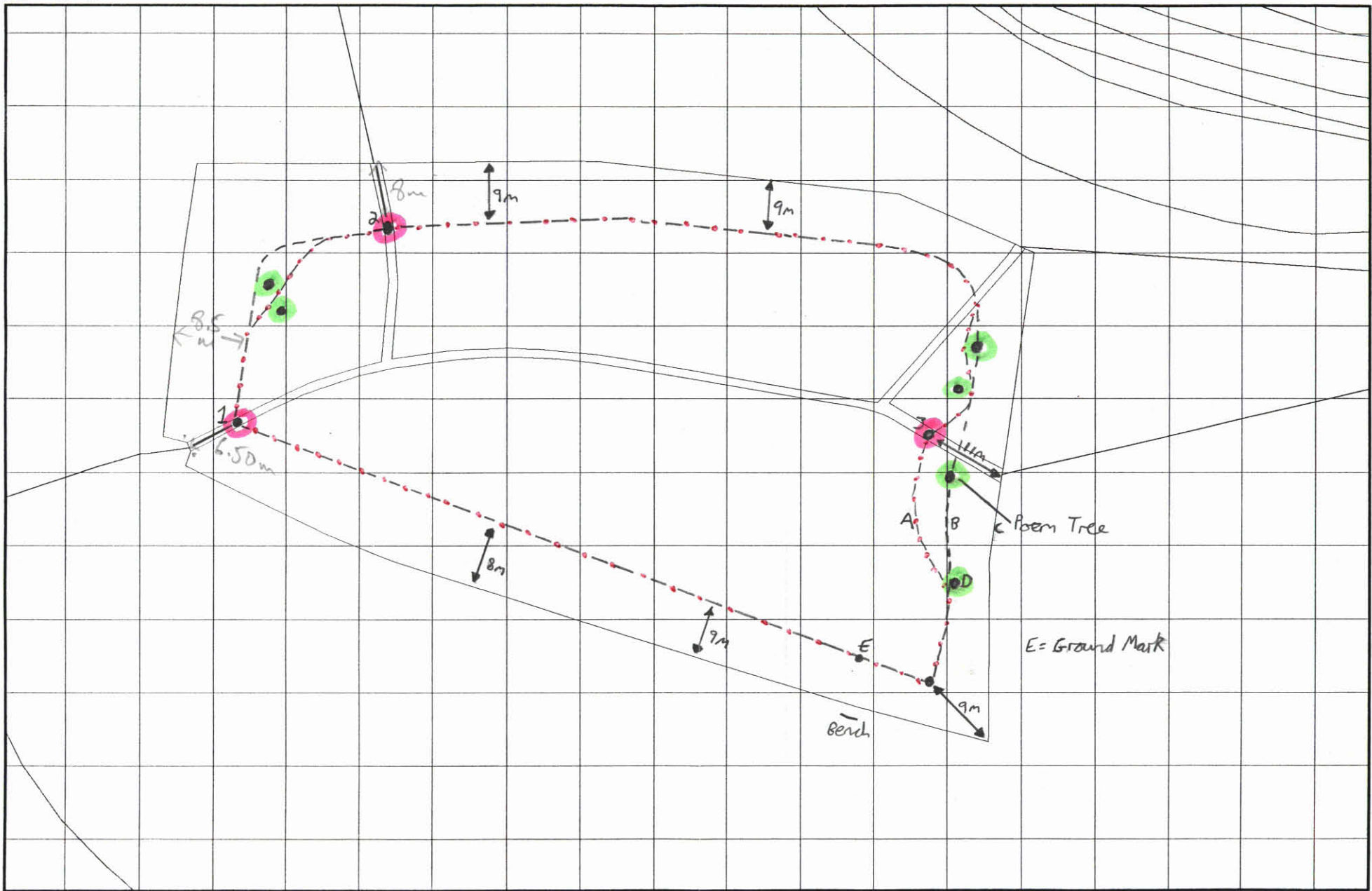
Line 3:

Classification of material

Tick if present

Classification of material	Tick if present
Index to archive	
Introduction	
A:Final Report	
A:Publication Report	
B:Site Data – Text: Diary/Daybook/Fieldnotes	
B: Site Data – Text: General Summaries	
B: Site Data – Text: Primary Context Records	
B: Site Data – Text: Synthesised Context Records	
B: Site Data – Text: Survey Reports	
B: Site Data – Text: Catalogue of Drawings	
B: Site Data – Text: Primary Drawings	<input checked="" type="checkbox"/>
B: Site Data – Text: Synthesised Drawings	
C: Finds Data – Text: Primary Finds Data	
C: Finds Data – Text: Synthesised Finds Data	
C: Finds Data – Text: Specialist Reports	
C: Finds Data – Text: Box/Bag List	
D: Catalogue of Photos/Slides/Videos/X--rays	
E: Environmental/Ecofact Data: Primary Records	
E: Environmental/Ecofact Data: Synthesised Records	
E: Environmental/Ecofact Data: Specialist Reports	
F: Documentary	
F: Press and Publicity	
G: Correspondence	
H: Miscellaneous	

LWCHLOT



KEY
 --- = Boundary Bank ● = Gate
 -.-.- = Fence Line ● = Tree

MEASUREMENTS
 A - B = 6.5 m
 A - C = 12 m
 E - Bench = 6.7 m
 A - D = 10.5 m

41
 Gate 1: 5456842 BNG 92492
 Gate 2: 5456875 BNG 92532
 Gate 3: 5456957 BNG 92479

NOT TO SCALE

A3 whole hill top.

A3 - hill top (appropriate scale)

N. points the path
trees

long, boundary bank (top of?)
proposed deer fence,
light blue lines (18m planting
ridges)

Based on Glauville Survey 2003

OS co-ordinates layer.

take out point data

make red line thicker.

~~the~~

Title: Castle Hill Clump

showing boundary bank and
proposed deer fence & gates

LITTLE WITTENHAM
NEW TREE PLANTING
CASTLE HILL
LWCHL 07



Box 1 FILE 5

D CATALOGUE OF PHOTOGRAPHS.

FILMING INSTRUCTIONS

Submitter OASouth

No. of scan disk copies: 3

Headings

Site information

Line 1: [OASouth] County[Oxon] Parish:[Little Wittenham]

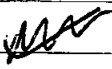
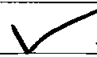
Site[Castle Hill New Tree Planting] Site code[LWCHL 07]

Line 2: Excavators name[D Dodds]

Line 3:

Classification of material

Tick if present

Index to archive	
Introduction	
A:Final Report	
A:Publication Report	
B:Site Data – Text: Diary/Daybook/Fieldnotes	
B: Site Data – Text: General Summaries	
B: Site Data – Text: Primary Context Records	
B: Site Data – Text: Synthesised Context Records	
B: Site Data – Text: Survey Reports	
B: Site Data – Text: Catalogue of Drawings	
B: Site Data – Text: Primary Drawings	
B: Site Data – Text: Synthesised Drawings	
C: Finds Data – Text: Primary Finds Data	
C: Finds Data – Text: Synthesised Finds Data	
C: Finds Data – Text: Specialist Reports	
C: Finds Data – Text: Box/Bag List	
D: Catalogue of Photos/Slides/Videos/X--rays	
E: Environmental/Ecofact Data: Primary Records	
E: Environmental/Ecofact Data: Synthesised Records	
E: Environmental/Ecofact Data: Specialist Reports	
F: Documentary	
F: Press and Publicity	
G: Correspondence	
H: Miscellaneous	



PHOTOGRAPHIC RECORD SHEET

SITE CODE **LWCHL 07**

SITE NAME *Castle Hill, Ditcherhan Close*

FILM NO. (

Camera number

Lens number

Black & white / ~~colour~~

Date	Negative number	View	Context(s)	Initials
	0			
	1		<i>LWCHL 07 I.D. SHOT</i>	
	2	<i>SW</i>	<i>Sample tree planting plot</i>	
	3	<i>SW</i>	<i>1 1 1 1</i>	
	4	<i>SW</i>	<i>1 1 1 1</i>	
	5			
	6			
	7			
	8			
	9			
	10			
	11			
	12			
	13			
	14			
	15			
	16			
	17			
	18			
	19			
	20			
	21			
	22			
	23			
	24			
	25			
	26			
	27			
	28			
	29			
	30			
	31			
	32			
	33			
	34			
	35			
	36			
	37			



PHOTOGRAPHIC RECORD SHEET

SITE CODE *LWCHL 07*

SITE NAME *Castle Hill, Wittenham Clow*

FILM NO. *1*

Camera number

Lens number

Black & white / colour

Date	Negative number	View	Context(s)	Initials
	0			
	1		<i>LWCHL 07 I.D. SHOT</i>	
	2	<i>SW</i>	<i>Sample tree planting slot</i>	
	3	<i>SW</i>	<i>1 1 1 1</i>	
	4	<i>SW</i>	<i>1 1 1 1</i>	
	5			
	6			
	7			
	8			
	9			
	10			
	11			
	12			
	13			
	14			
	15			
	16			
	17			
	18			
	19			
	20			
	21			
	22			
	23			
	24			
	25			
	26			
	27			
	28			
	29			
	30			
	31			
	32			
	33			
	34			
	35			
	36			
	37			