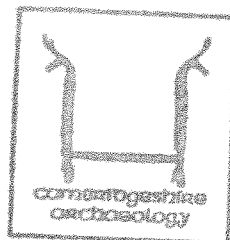
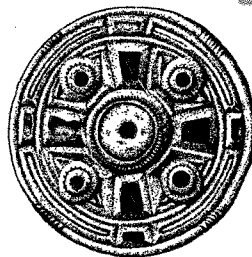


OFFICE COPY.



A9
Office copy.
ARCHAEOLOGY FIELD OFFICE
FULBOURN COMMUNITY CENTRE
HAGGIS GAP, FULBOURN
CAMBRIDGE CB1 5HD Tel: 881686
(Fax 881678)



Archaeological Field Unit

An Archaeological Watching-Brief on the Upton to Marholm Water Main Renewal

Simon Bray

1993

Cambridgeshire Archaeology

Report No. A9

Commissioned By Anglian Water Services Ltd.

**An Archaeological Watching-Brief On the Upton-Marholm Water Main
Renewal, 1993
TF1575/0223 to TF1495/0236**

ABSTRACT

In May 1993 Cambridgeshire Archaeology completed an archaeological watching brief on a section of the Upton-Marholm water main on behalf of Anglian Water Services Ltd. No archaeological features were found.

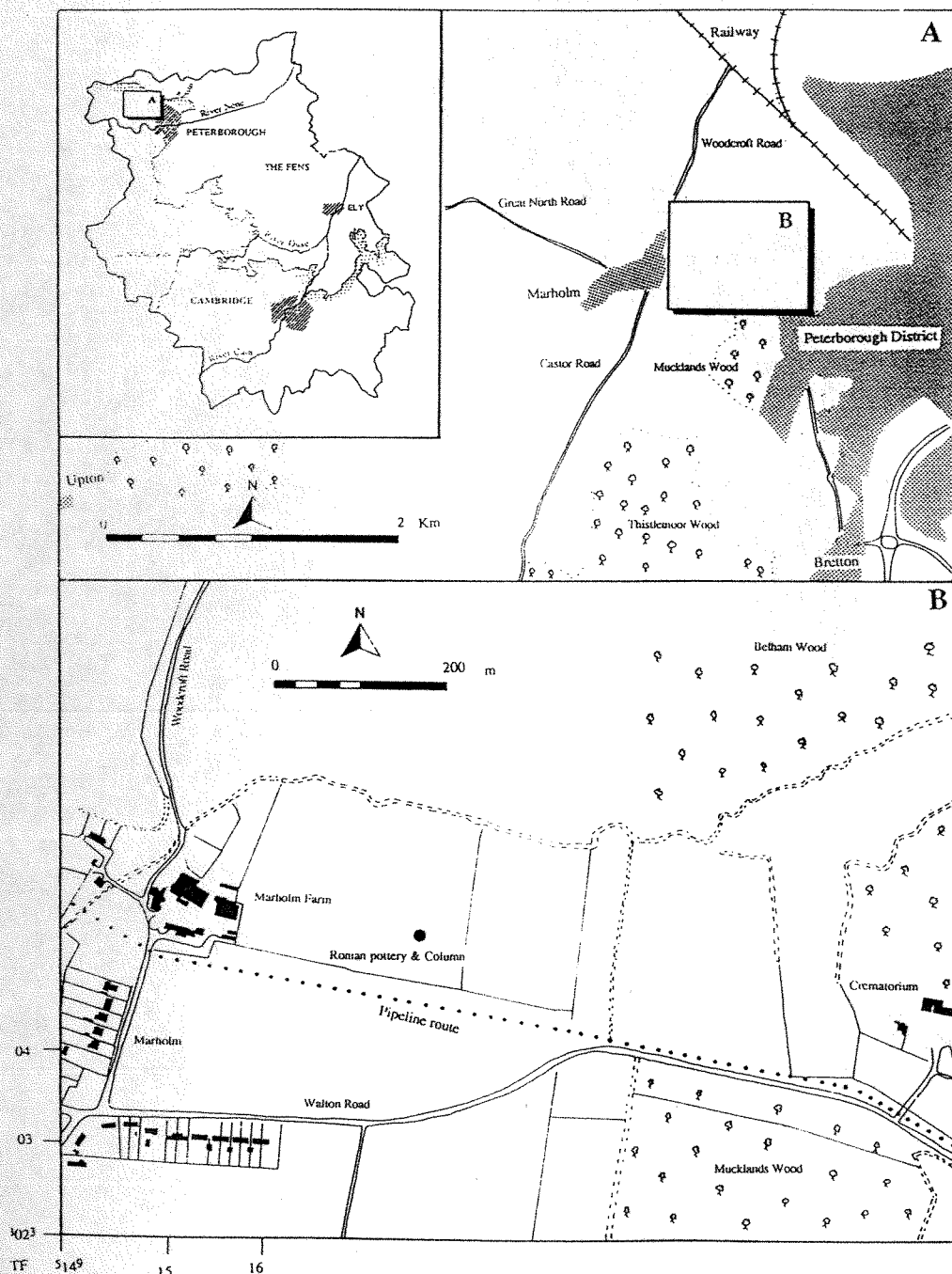


Figure 1 - **Location of Site**

INTRODUCTION

During May 1993 Anglian Water Services Ltd., laid a section of the Upton-Marholm pipeline between Walton and Marholm (*Figure 1*) as part of a scheme to replace an existing water main. The course of the new pipeline runs adjacent to the existing main. Cambridgeshire Archaeology were commissioned to complete a watching brief on this stage of operations where the easement ran adjacent to a field where a concentration of Roman finds had been recorded.

In the immediate area of the pipeline there is little evidence for any historic activity other than a Roman column and pottery scatter recovered from an adjacent field (*Figure 1*). Although this could indicate the presence of a contemporary settlement.

Marholm lies two miles to the northwest of Peterborough. The underlying geology of the area under investigation is Jurassic Blisworth Limestone.

METHODOLOGY

A watching-brief was maintained during the excavation of the easement where it ran adjacent to the field with recorded Roman remains in it (*Figure 1*). For the remainder of the route to Marholm the easement was walked after the removal of the topsoil.

Any areas of archaeological interest were cleaned and sampled and recorded using Cambridgeshire Archaeology single context recording system.

RESULTS

The easement was excavated to the natural geology along the length of the easement. The ploughsoil was found to be of a constant depth, 35 cm deep along the easement. Apart from two abraded sherds of Roman coarseware pottery no archaeological remains were found during the watching-brief.

DISCUSSION OF RESULTS

No archaeological remains other than two sherds of Roman pottery were recorded during the watching-brief. The presence of a scatter of Roman pottery and building material is an indication of contemporary substantial buildings in the area. Two factors can be seen as contributing to the notable absence of archaeological remains within the easement:

- The site has been subjected to intensive agriculture over the last 40 years with resultant significant damage to the subsoil and any potential archaeology.
- Secondly half of the easement had been previously excavated during the construction of the initial pipeline, this would have had destroyed any surviving archaeological remains in the path of the pipeline.



Archaeological Field Unit
Fulbourn Community Centre
Haggis Gap
Fulbourn
Cambridge CB1 5HD
Tel (0223) 881614
Fax (0223) 881678



Cambridgeshire
County Council
Archaeology

The Archaeology Office
Rural Management
Department of Property
Shire Hall, Castle Hill
Cambridge CB3 0AP
Tel (0223) 317312
Fax (0223) 317341