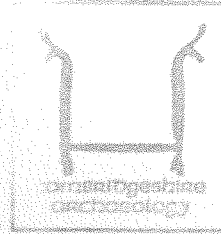
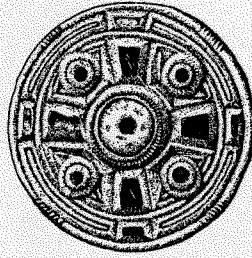


OFFICE COPY.



M17
FULBOURN OFFICE
COPY

ARCHAEOLOGY FIELD OFFICE
FULBOURN COMMUNITY CENTRE
HAGG'S GAP, FULBOURN
CAMBRIDGE CB1 5HD Tel 801614
(Fax 831678)



Archaeological Field Unit

An Archaeological Recording Brief at Angel Drove, Ely

J Roberts

1993

Cambridgeshire Archaeology

Report No A17

Commissioned By G. L. Hearn on behalf of Tesco Stores Ltd

**An Archaeological Recording Brief at
Angel Drove, Ely**

1993

J Roberts

EDITOR T Reynolds MA PhD

REPORT NO. A17

**ARCHAEOLOGICAL FIELD UNIT
CAMBRIDGESHIRE ARCHAEOLOGY
FULBOURN COMMUNITY CENTRE
HAGGIS GAP, FULBOURN
CAMBRIDGESHIRE CB2 5HD
TEL (0223) 881614
FAX (0223) 881678**

An Archaeological Recording Brief at Angel Drove, Ely

Proposed Retail Development by Tesco Stores Ltd. at Angel Drove, Ely

TL542/796

Summary

In August 1993, Cambridgeshire Archaeology carried out an archaeological recording brief at Angel Drove, Ely (TL542/796) G. L. Hearn acting on behalf of Tesco Stores Ltd. Despite evidence of archaeological activity in the area and the proximity to the city of Ely no archaeological features were found.

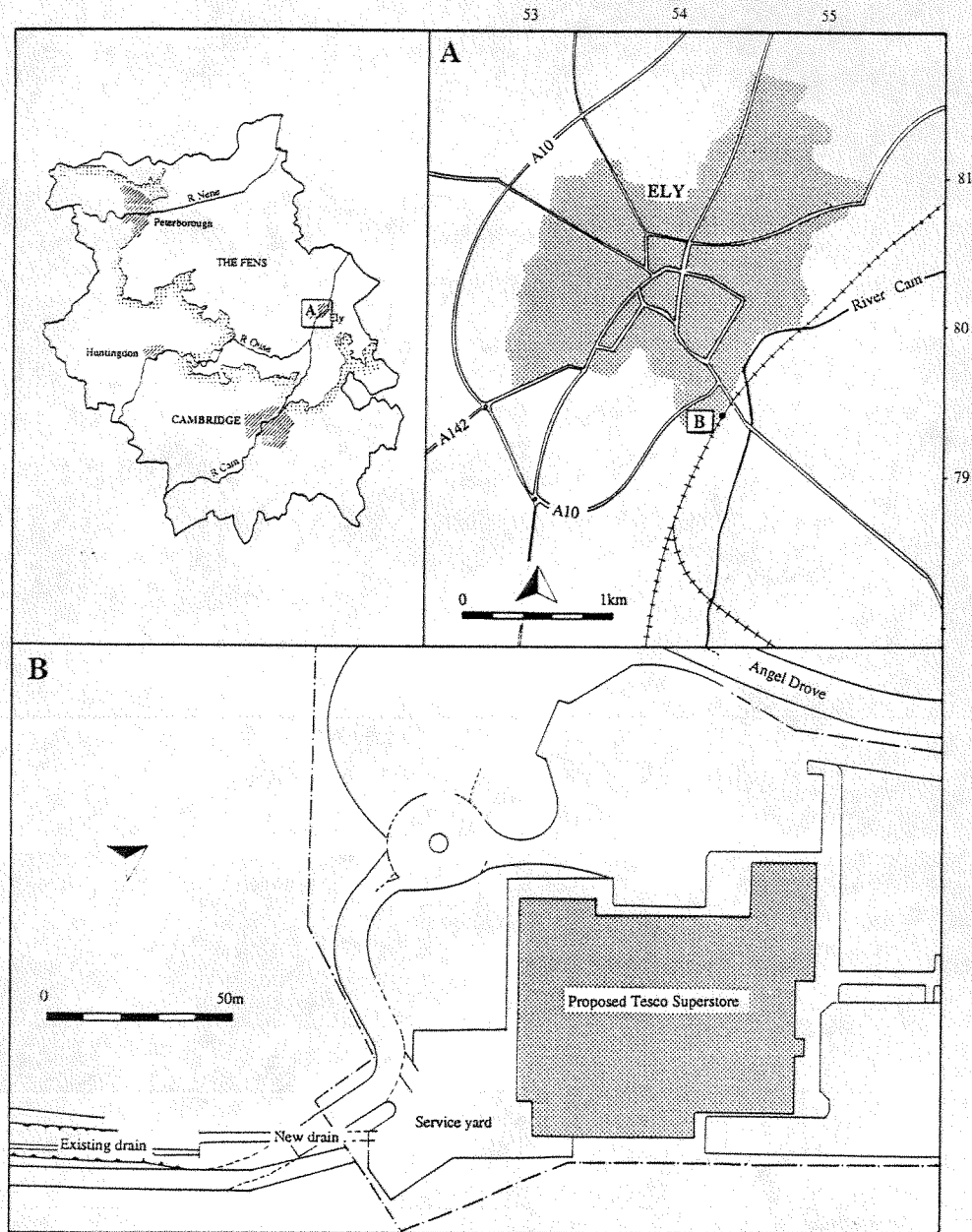


Figure 1 Location of the site at Angel Drove, Ely

Introduction

Early in March 1993, Cambridgeshire Archaeology were engaged to conduct a recording brief for G. L. Hearn acting on behalf of Tesco Stores Ltd. during the laying of a drain alongside an existing drain from the previous railway yards. The drain covered a distance of approximately 30m.

Background

The Cambridgeshire Sites and Monuments Record identified several archaeological sites in the area of the proposed development. This included a Fransisca type throwing axe (SMR No. 07025) from Back Hill, Ely, medieval pottery sherds (SMR Nos. 07026 and 07028) and various enclosure cropmarks (SMR Nos. 06966 and 09227). The development is taking place on an area of land adjoining railway tracks and related buildings and has until recently been covered by goods sheds. The site has been disturbed in recent times. Geological survey indicated that the site is covered with varying depths of made-up ground of apparently late nineteenth or twentieth century date. The geology of the area is based on Kimmeridge Clay overlaid with alluvium. A substantial part of the site was contaminated by hydrocarbons and not accessible for recording purposes.

Methodology

Work was monitored in the southern corner of the site of the proposed development (Fig 1), adjacent to the railway lines and access route to S & Y Haulage. The developer was putting in 6m (and approximately 0.5m diameter) lengths of black plastic drain next to an existing, but blocked, drain to service the site culverts. The drain runs from the old goods yard to an existing wet ditch, in a southerly direction. The trench was opened by a mechanical digger with a toothed ditching bucket on 6th August 1993 and the drain was placed on a bed of orange sand, laid to a depth of approx. 5 cm, immediately on the Kimmeridge Clay natural at a depth of approximately 2.5 to 3m below the modern (made-up) surface and several metres below the level of the nearby railway lines.

Results

The trench (2m wide at the upper level and narrowing to 1m to accommodate the drain at the bottom) cut through a made-up layer of disturbed ash, concrete chunks, modern yellow (London) and engineering bricks, reinforcing rods and pieces of corrugated 'asbestos' roofing. Below this, at a depth of approximately 1m from the ground surface was ash/clinker, slightly less disturbed surface but still containing 'slag', clinker and older (eroded, red, nineteenth century(?) bricks). Throughout there was broken glass and large pieces of iron. Towards the southern end of the drain the ground was less disturbed and appeared to be silty alluvium/sub-soil. At the southern end of the drain water was present (highly contaminated with oil, etc.). Below the alluvial sub-soil was a sandy/clay layer (light orange) with a small quantity of gravel which was approximately 0.5m deep and immediately overlay a firm blue/grey clay. This clay layer rose up (approx. 0.5-1m) from the drain outlet at the southern end to the northern end of the second 6m length (i.e. 12m from the outlet), the sandy layer was narrower and the ash/red brick layer was deeper.

Throughout the southern end of the trench fibrous roots from the overlying scrub were present to the level of the sub-soil. These were less frequent further north where the ground was heavily disturbed. The exposed area was photographically recorded.

No features of archaeological significance were identified within the area affected by the drain laying.

Conclusions

The effects of relatively modern disturbance and late nineteenth and twentieth century building (and subsequent demolition) and the relatively small area of land being exposed during drain laying may explain the lack of any archaeological evidence. However, given that no archaeology has been uncovered in the immediate vicinity and the level of relatively modern disturbance in the area suggests there may be little surviving evidence of activity on the site of the development.

A site archive has been completed and is held by Cambridgeshire Archaeology. Copies of this report have been lodged with the County Archaeology Office.

Bibliography

Cambridgeshire County Council (1993) Sites and Monuments Record



Archaeological Field Unit
Fulbourn Community Centre
Haggis Gap
Fulbourn
Cambridge CB1 5HD
Tel (0223) 881614
Fax (0223) 881678



Cambridgeshire
County Council
Archaeology

The Archaeology Office
Rural Management
Department of Property
Shire Hall, Castle Hill
Cambridge CB3 0AP
Tel (0223) 317312
Fax (0223) 317341