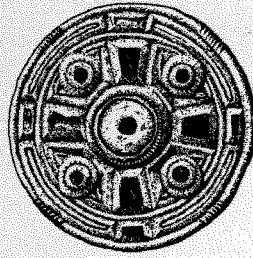


OFFICE COPY

ARCHAEOLOGY FIELD OFFICE  
FULBOURN COMMUNITY CENTRE  
HAGGIS GAP, FULBOURN  
CAMBRIDGE CB1 5HD

OFFICE COPY.



Archaeological Field Unit

**Archaeological Watching Brief at Test Pits along the  
Grafham to Sapley Reinforcement - Phase II**

Judith Roberts

1995

**Cambridgeshire County Council**

Report No. A52

*Commissioned By Anglia Water Services Ltd.*

**Archaeological watching brief at test pits along the  
Grafham to Sapley Reinforcement - Phase II**

Judith Roberts

1995

Illustrator Jen May

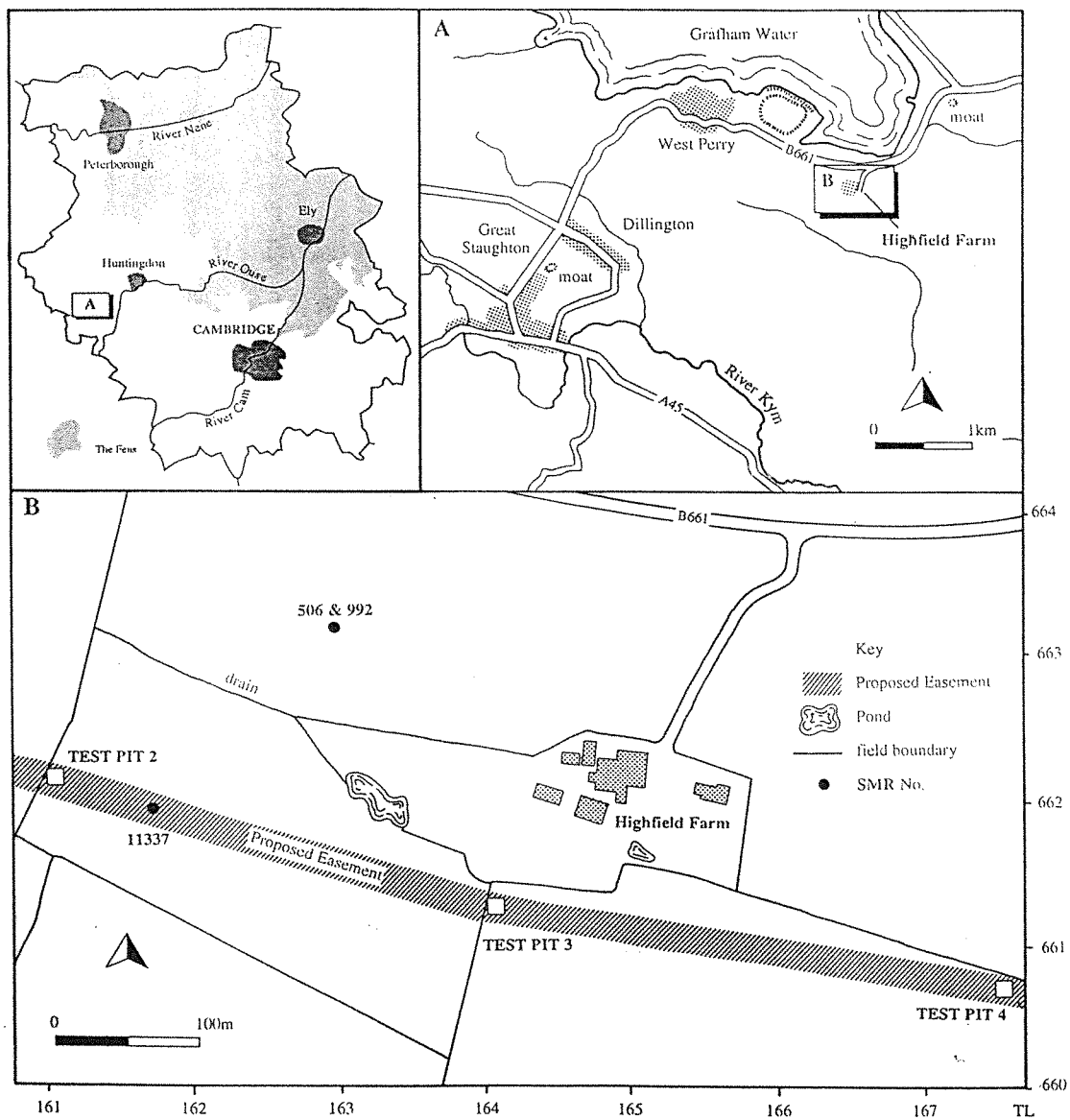
*Report No A52*

Archaeological Field Unit  
Cambridgeshire County Council  
Fulbourn Community Centre  
Haggis Gap, Fulbourn  
Cambridgeshire CB1 5HD  
Tel (01223) 881614  
Fax (01223) 880946

# Archaeological watching brief at test pits along the Grafham to Sapley Reinforcement - Phase II (TL 161 662 - 167 661)

## SUMMARY

*A watching brief was undertaken during geological test pitting at three points in fields along the Grafham to Sapley Reinforcement - Phase II (TL 1611 6625 - 1675 6617) by Highfield Farm, Diddington on behalf of Anglia Water Services Ltd. following a recommendation from the County Archaeology Office. No archaeological features or remains were recorded.*



*Figure 1 Location map and site plan of test pits*

## 1 INTRODUCTION

During September 1994 the Cambridgeshire County Council Archaeology Field Unit was asked to undertake a watching brief over three geological test pits being dug along the proposed route of the Grafham to Sapley Reinforcement following a recommendation from the County Archaeology Office. The work was carried out on behalf of Anglia Water Services Ltd.

## 2 ARCHAEOLOGICAL BACKGROUND

The fields lie on Boulder Clay overlain by a shallow (approx. 300mm) chalky soil and sandy silt subsoil with some gravel and chalk inclusions. Full geological analysis of the soil and sub-soil column was carried out for Anglian Water Services Ltd. by A. F. Howland Associates.

To the north of the area test pitted (between Highfield Farm Cottages and Highfield Farm and East Parry Road) the County Sites and Monuments Record (SMR)(TL 1635 6632) shows the presence of a Roman road, Roman kilns, a Roman cremation (SMR Nos. 506 and 992) and an Anglo-Saxon brooch (SMR No. 11337) on the route of the pipeline. Prehistoric and medieval remains have also been located in the vicinity but again to the north of the area of the proposed pipeline. Just over 1 kilometre to the south of the proposed route another Anglo-Saxon brooch and further Roman remains are marked on the SMR (No. 11338).

## 3 METHODS

Three test pits (numbered 2 - 4 in accordance with the numbers assigned by A F Howland Associates/Anglian Water) were dug along the route of the proposed pipeline (*Figure 1*) using a digger with a toothed bucket. The pits were approximately 1m x 1.5m and extended to a depth of 3.5m. This method allowed for little or no recognition of features within the test pits but examination of the sections and upcast spoil was carried out. This work was carried out on 29th September 1994. A fourth test pit had already been dug at the treatment plant, this was not examined for archaeological purposes.

## 4 RESULTS

Finds from the upcast spoil of Test Pit 4 were limited to small fragments of brick/tile (of indeterminate age, but not modern) and which were heavily abraded and one fragment of daub (approx. 50mm). This pit was dug next to a junction of trackways with a roughly made-up surface and pieces of asphalt were found in the spoil. The upcast spoil from Test Pit 3 was apparently devoid of artefactual remains. The spoil from Test Pit 2 contained tiny fragments of red brick/tile, these were heavily fragmented and no piece exceeded 20mm. Fragments of Roman tile were visible in surrounding soil but were widely dispersed and no concentration indicative of structures or settlements was obvious.

The sections of the test pits gave no indication of any features dug into the sub-soil, in all pits the depth of the top-soil appeared to be approximately 300mm deep with no visible disturbance of the sub-soil.

## **5 DISCUSSION OF RESULTS**

The absence of features and finds in these test pits may be an indication that activity during the Roman and Saxon period did not extend very far south of the points indicated on the SMR. The presence of archaeological remains along the proposed route, a short distance to the north and approximately 1 kilometre to the south suggests further archaeological work along the length of the pipeline will reveal outlying occupation or activity from the Roman and/or Anglo-Saxon periods.

## **ACKNOWLEDGEMENTS**

The author wishes to thank Anglian Water Services Ltd. for funding the watching brief, Paul Hickey of Anglian Water Services Ltd for providing the necessary information and instructing Cambridgeshire County Council Archaeological Field Unit to carry out the work. Thanks also to David Tisdale of A F Howland Associates, Geotechnical Engineers and for his help and co-operation, to Bob Sydes of the County Archaeology Office and to Tim Reynolds of the Field Unit for editing this report and Jenny May for the illustration.

## **REFERENCES**

Cambridgeshire Sites and Monuments Record



Cambridgeshire  
County Council

Archaeology

The Archaeological Field Unit  
Fulbourn Community Centre  
Haggis Gap  
Fulbourn  
Cambridge CB1 5HD  
Tel (01223) 881614  
Fax (01223) 880946