



Lyme Park, Cheshire

Detailed Survey of Aspects of the Historical Landscape Development

Volume 4: Plates



Oxford Archaeology North

December 2006

The National Trust

Issue No: 2005-6/551

OA North Job No: L9696

NGR: SJ 965 824

Document Title: LYME PARK CHESHIRE
Document Type: Detailed Survey of Aspects of the Historical Landscape Development
Volume 4: Plates
Client Name: The National Trust
Issue Number: 2005-6/551
OA Job Number: L9696
National Grid Reference: SJ 965 824

Checked by: Jamie Quartermaine Signed.....
Position: Senior Project Manager
Date: December 2006

Approved by: Alan Lupton Signed.....
Position: Operations Manager
Date: December 2006

Document File Location X:\Jamie\PROJECTS\9696lymerehash\REPORT\FINAL

Oxford Archaeology North
Storey Institute
Meeting House Lane
Lancaster
LA1 1TF
t: (0044) 01524 848666
f: (0044) 01524 848606

© Oxford Archaeological Unit Ltd (2006)
Janus House
Osney Mead
Oxford
OX2 0EA
t: (0044) 01865 263800
f: (0044) 01865 793496

w: www.oxfordarch.co.uk
e: info@oxfordarch.co.uk

Oxford Archaeological Unit Limited is a Registered Charity No: 285627

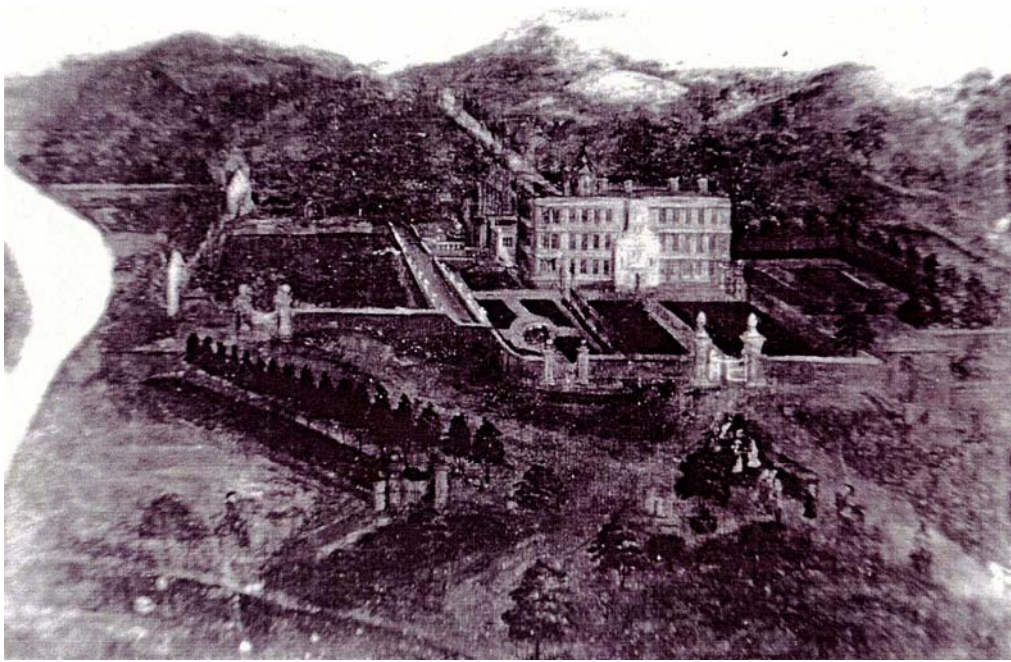
Disclaimer:

This document has been prepared for the titled project or named part thereof and should not be relied upon or used for any other project without an independent check being carried out as to its suitability and prior written authority of Oxford Archaeology being obtained. Oxford Archaeology accepts no responsibility or liability for the consequences of this document being used for a purpose other than the purposes for which it was commissioned. Any person/party using or relying on the document for such other purposes agrees, and will by such use or reliance be taken to confirm their agreement to indemnify Oxford Archaeology for all loss or damage resulting therefrom. Oxford Archaeology accepts no responsibility or liability for this document to any party other than the person/party by whom it was commissioned.

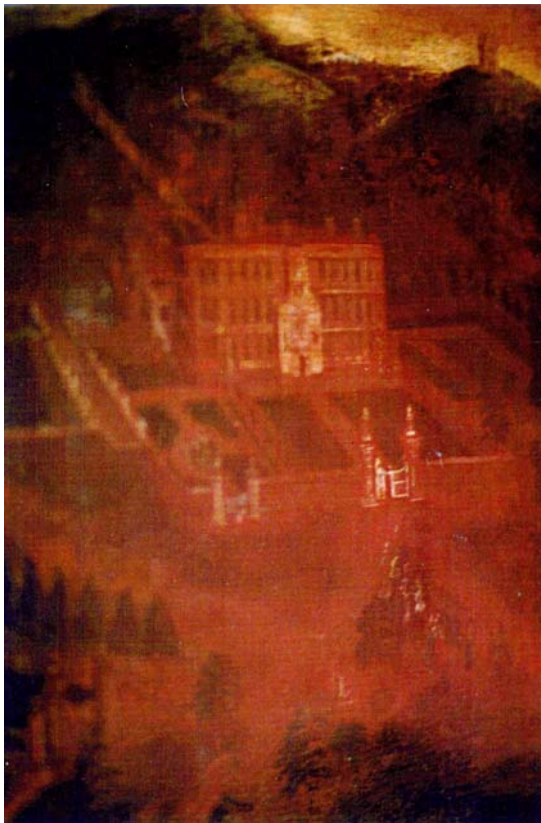
VOLUME 4 - PLATES LIST

Plate 1	Late Seventeenth Century Painting of Hall and Gardens
Plate 2	Late Seventeenth and Early Century Paintings of the North Front
Plate 3a and b	Engravings and Paintings North of the Hall
Plate 4a and b	Engravings of the South Front
Plate 5	Engravings of the South and West Fronts
Plate 6a, b and c	Photographic Record, North and West Fronts (1900-1950)
Plate 7a and b	Photographic Record, East Terrace (1900-1950)
Plate 8a and b	Photographic Record, Rose Garden and Killtime (1900-1950)
Plate 9a and b	Photographic Record, South Pond (1900-1950)
Plate 10a, b and c	Photographic Record, South Front (1900-1950)
Plate 11a, b and c	Photographic Record, Dutch Garden (1900-1950)
Plate 12a and b	Driveway Photographs
Plate 13a and b	North Forecourt Photographs
Plate 14a and b	East Terrace Photographs
Plate 15	East Terrace Old Ribbon Pond Photographs
Plate 16a and b	East Terrace Walls Photographs
Plate 17a and b	Rose Garden Photographs
Plate 18a and b	Pleasure Ground: Link to East Terraces Photographs
Plate 19a and b	Pleasure Ground: Killtime Photographs
Plate 20a and b	The South Lawns and Pond
Plate 21a and b	West Terrace and the Dutch Garden Photographs
Plate 22a and b	Vicary Gibbs Garden Photographs
Plate 23a and b	Views and Axis Photographs
Plate 24a and b	Lime Avenue Photographs
Plate 25a and b	Turfhouse Meadow
Plate 26	Walled Enclosure in Hampers
Plate 27	Erosion at Coalpit Clough and Park Moor
Plate 28a and b	Bare Soil Scar at Poynton Brook and Pursefield Wood
Plate 29	Tracking of the Valley Floor at Park Moor and Coalpit Clough
Plate 30	Erosion at Park Moor and Coalpit Clough
Plate 31	Stabilised Margins of Scars
Plate 32	Deer 'wallows' at Park Moor and Coalpit Clough

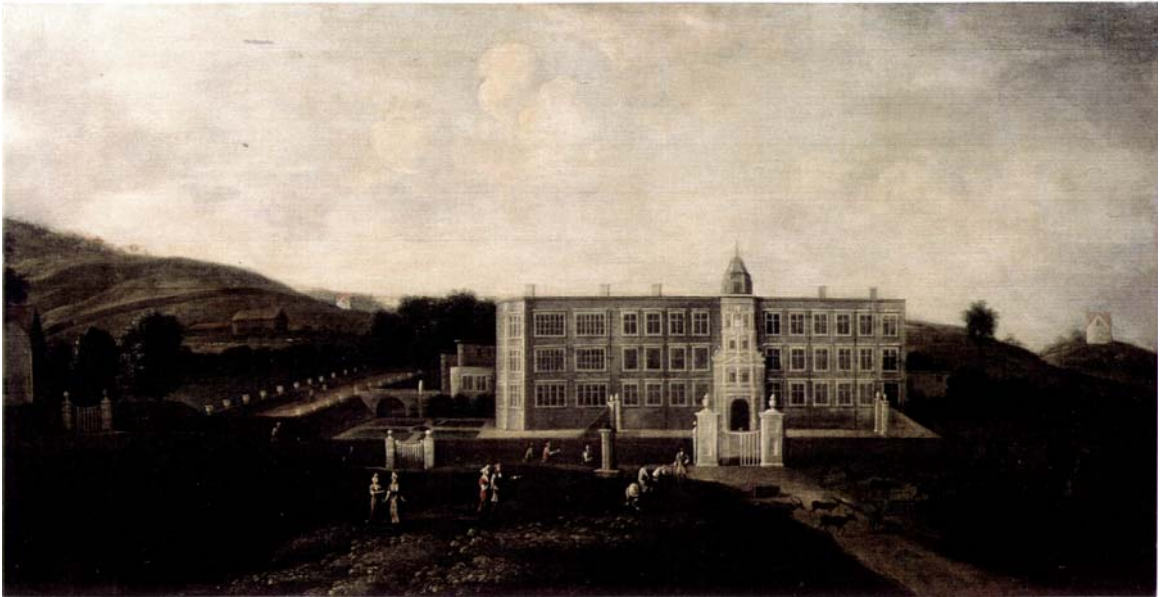
Plate 33	'Rutting track' at Park Moor
Plate 34	Heather moor at Dale Top
Plate 35	Restored Buildings - Cage and Kennels
Plate 36	Restored Gardens - Wyatt Garden and the West Terrace
Plate 37	Restored Vistas and Avenues: Cage/Paddock and Lime Avenue
Plate 38	Replanted Rounds: Turtle Brew and Drinkwater Rounds
Plate 39	Repaired Walls: Hase Bank and adjacent to Drinkwater Round
Plate 40	Restored / Excavated Buildings: Paddock Cottage and the Stag House
Plate 41	Cluse Hay Restoration Project



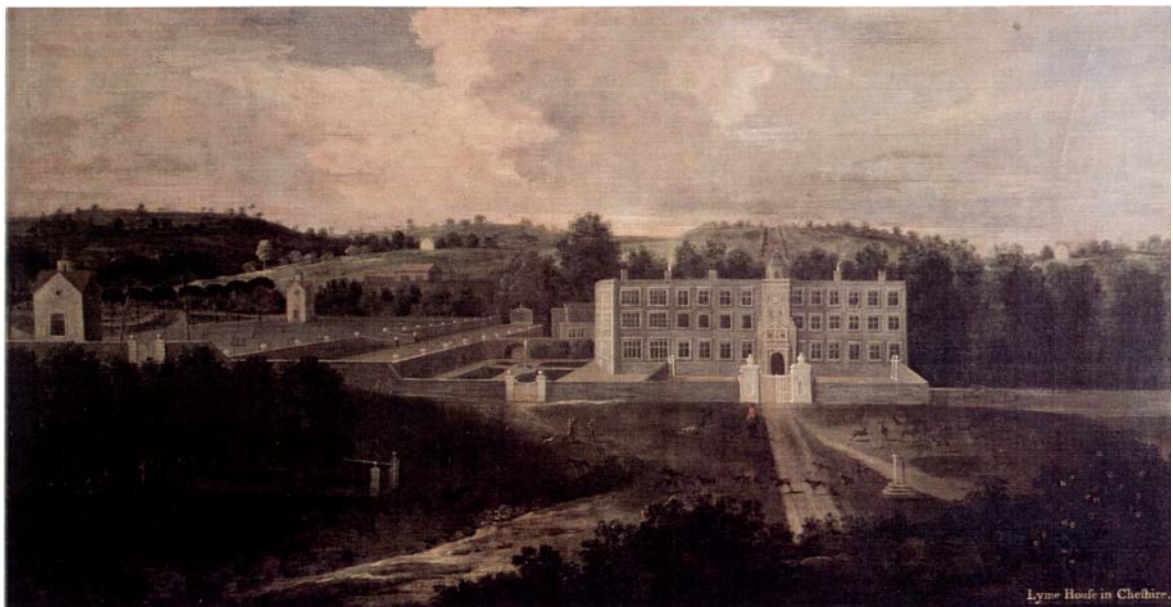
Fragment of Equestrian Portrait c1676 showing a birds eye view of the north front with the terraced walled gardens, including the walled north forecourt. To the east of the hall a pond with statue is visible, while to the west is depicted the layout of the tree lined sunken (Dutch) garden, with central pond. In the foreground is seen the stag pond.



A detail of the painting showing Paddock Lodge on the skyline

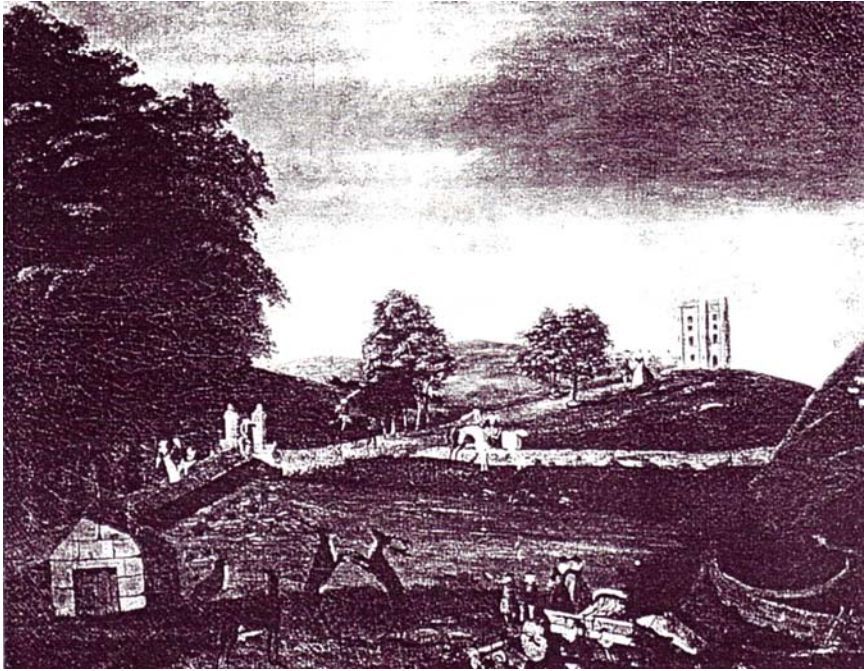


View on the north axis recording the changes to the hall c1695. The belcote is now central and it appears a west bay has been added to the painting. The north driveway is shown leading towards the stables and not on an axis.



Elevated view of the North front as seen from Cage hill c1710 of a more pastoral setting, the south avenue extending to the skyline. In contrast to the former painting, the Green Drive is illustrated on a northern axis.

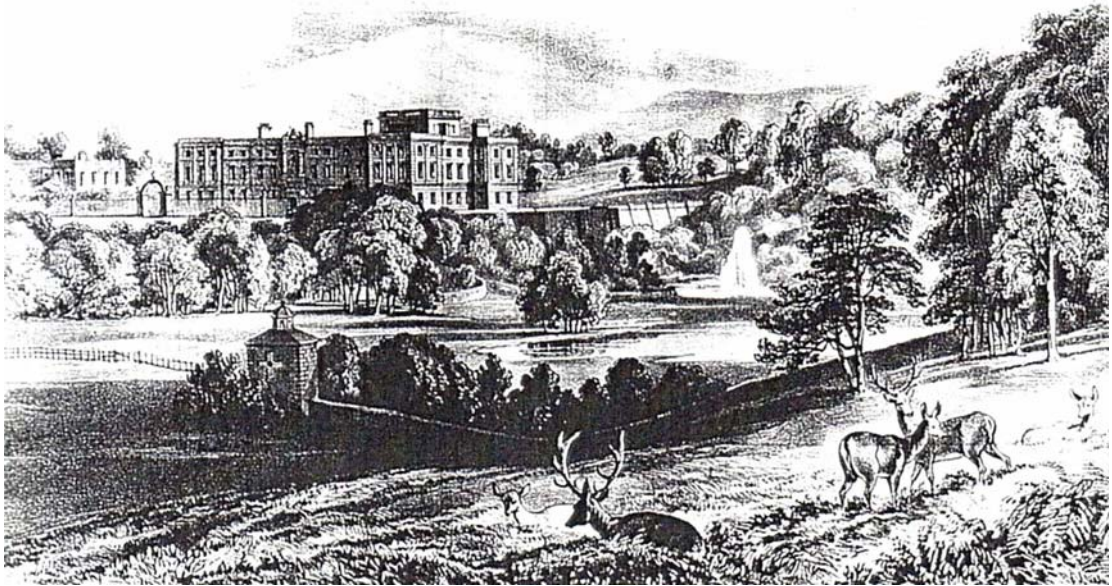
Plate 2: Late seventeenth and early eighteenth century paintings of the North front



Painting 'View of the Cage' c1745 by Thomas Smith. The scene includes the cage as rebuilt by Giacoma Leoni and the ride leading back the Stag pond in the foreground.



Engraving of the the Stag Pond c1745 by Francois Vivares. He emulates the view by Smith, but he omits the Cage. The trees in the parkland are shown protected from grazing by raised rings of stones.

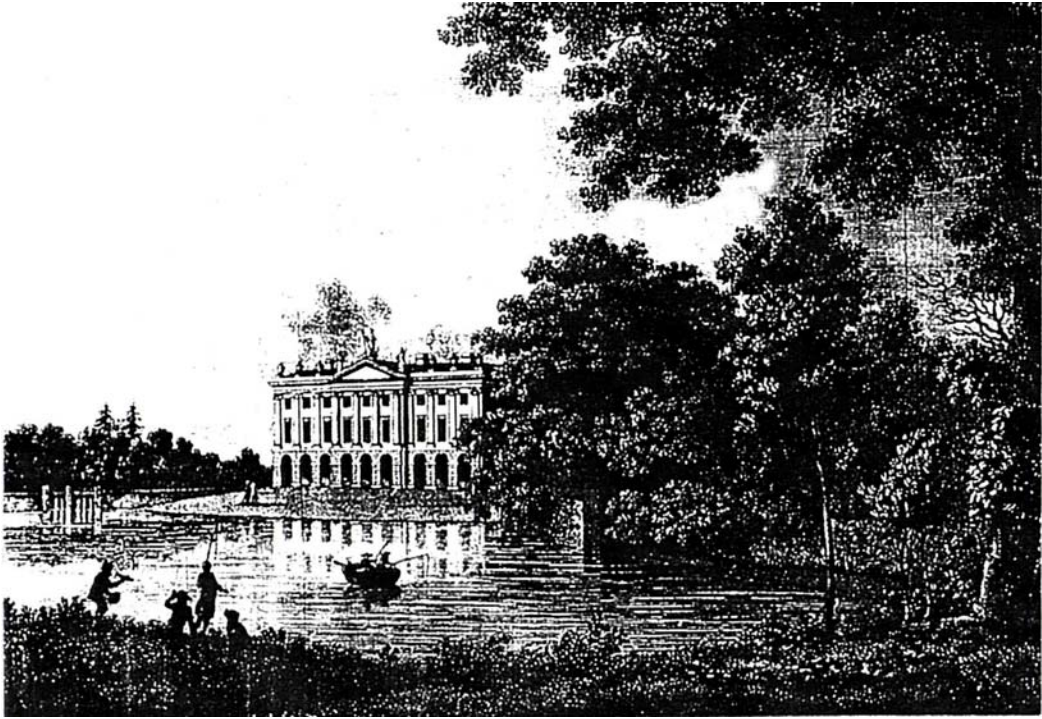


View of the North Front c1850 by PC Auld, W Gauci. The new west terrace, tower and north forecourt are evident, as is a fountain pool in Swine Park as per the c1740 plan



Engraving: View of the North Front c1854 by W. Walton. The scene correlates with that in 1850, but omits the fountain pool

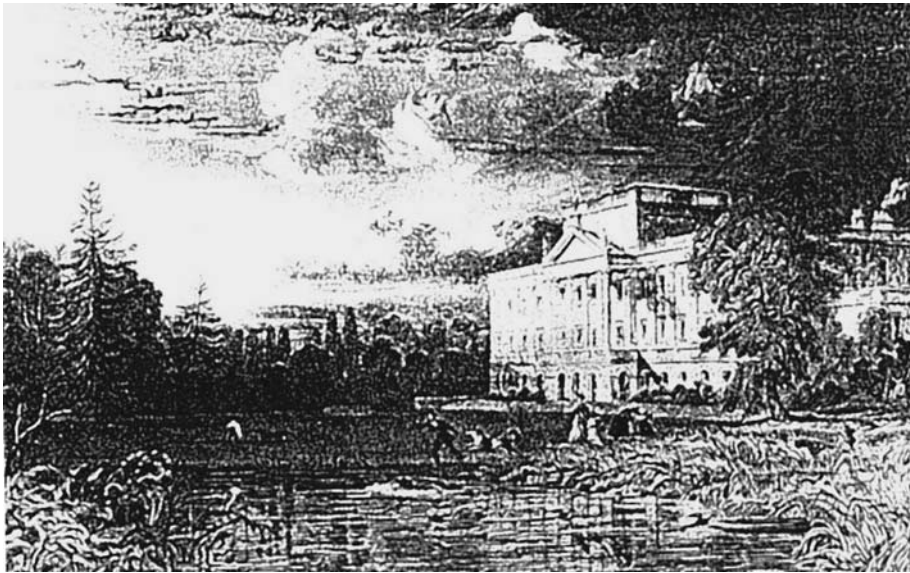
Plate 3b: Engravings and Paintings North of the Hall



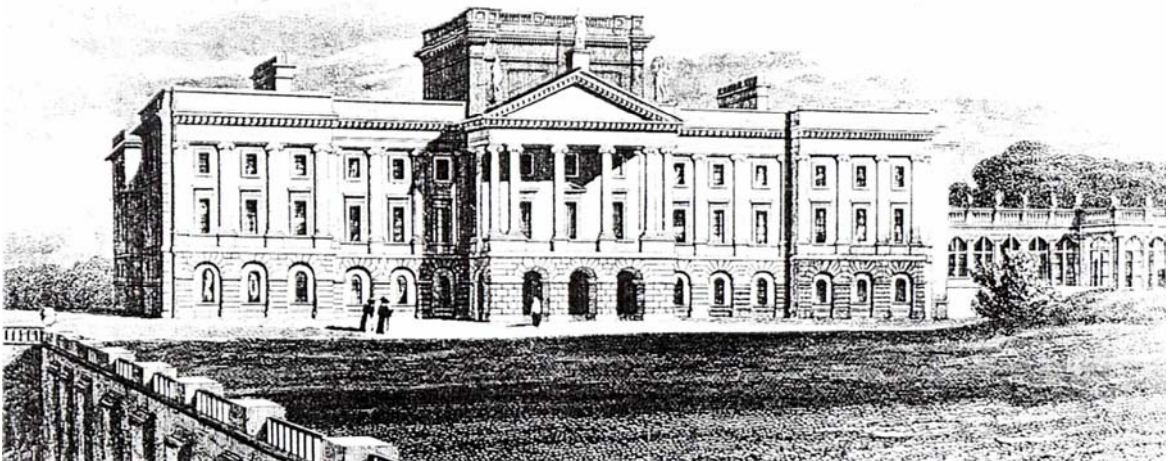
Engraving of the South Front and Orangery c1850 by PC Auld, W Gauci. The pond is again remodelled and has been expanded to allow an island to be formed. This extension was refined c1864 and was retained through the 20th century.



Engraving: South and front Orangery c1850 by PC Auld, W Gauci. Here the pond has again been remodelled, expanding it and leaving an asymmetric apron of lawn.

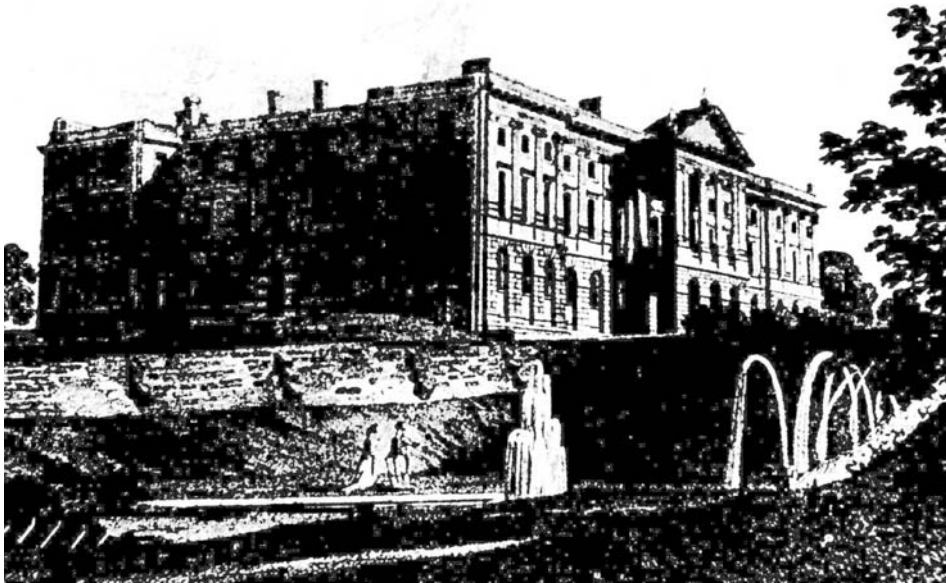


Engraving: South and East elevations c1837 by T Allom. It has an open view of the Hall following the removal of the bowling terrace. The pond is formed in a serpentine style and the south lawn defines the space.



Engraving: South elevation and Orangery c1824 by JP Neale. This vantage point shows the west terrace walls soon after completion, the new south lawn, and also the new but incomplete orangery on the site of the old bowling lawn

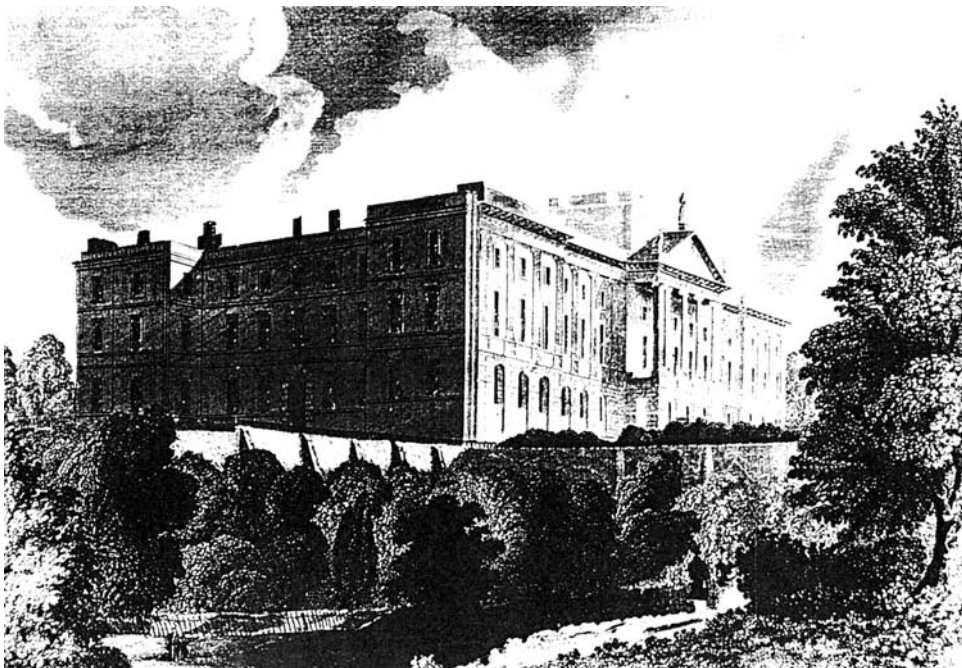
Plate 4b: Engravings of the South Front



Engraving: View from the South-West by J. Alken: This view of the hanging gardens prior to the Lewis Wyatt alterations to the Hall and rebuilding of the terrace walls.

This engraving gives an insight into the evolution of the gardens and the early layout of the terraces. The walls are indicative of landform change; the base of them providing a benchmark for the excavation of hanging or sunken gardens.

The east batter is akin to an earth dam, suggesting that the large pond (shown on the 1779 engraving) did extend to the width of the south terrace during the C18th. The sluice gate may have fed the cascade and the lake provided the head for the fountain system. This creative piece of fountain engineering was the product of Renaissance gardens.



Engraving: View from the South-West c1820, showing the hanging gardens following the completion of the tower and elevation of the west terrace. The 5m high retaining enabled a significant refinement of the terrace, while corresponding with the grandeur of the hall

Plate 5: Engravings of the South and West fronts



North elevation in *c*1900; note the clipped yews and absence of the central lawn in the forecourt



Frontispiece *c*1900



The North front in c1906 with the foreground shrub, which was planted in 1902. A central lawn is evident.



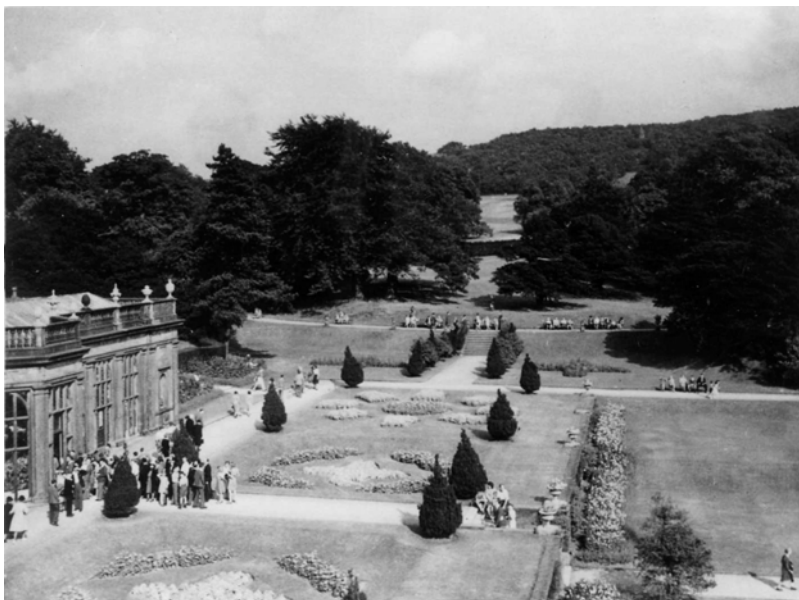
The north elevation c1945. The yews were no longer clipped and the turning circle appears crowned



The old west approach above Swine Park c1900



Swine Park showing the open route of the beck c1900



Photograph recording the east terrace and Lantern vista c1947



East end terrace and Pleasure Ground c1910



Conservatory terrace c1910



Clipped Holly c1910



Summer bedding adjacent to the east terrace steps c1920



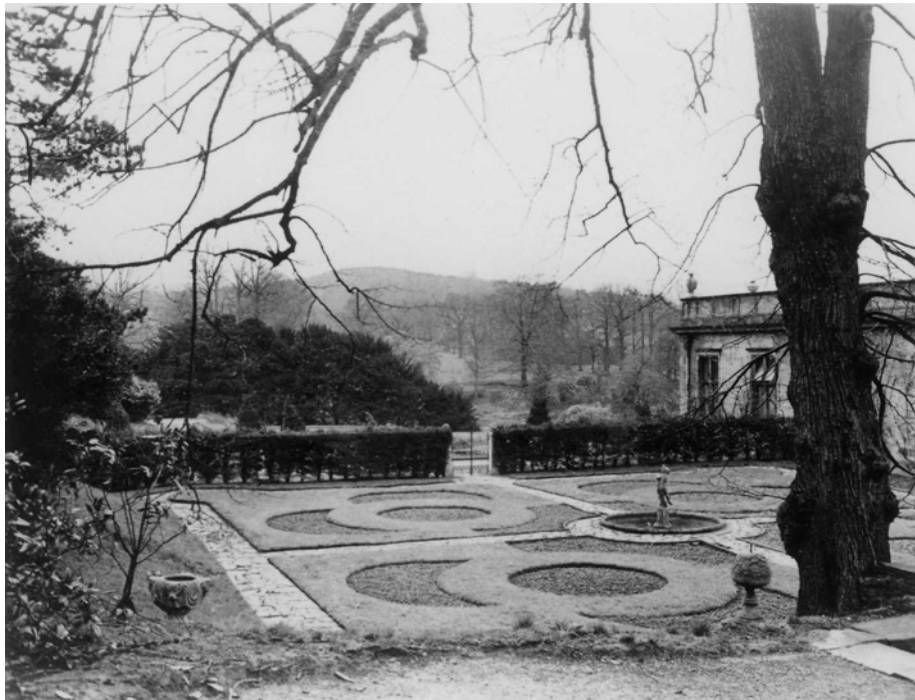
East elevation and terraces following the planting of silver lime c1947



The Conservatory or Orangery terrace c1904



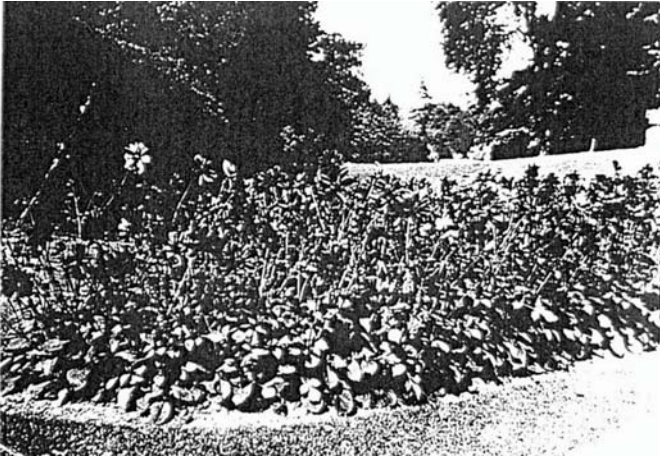
View towards the Rose Garden soon after planting



Layout in c1947



Ferns along Killtime walks c1920



Apron to the rose garden



Vines under glass c1900 (the orchid glass houses had vines prior to their clearance to set out the rose garden)



East Terrace steps with view to Hampers wood *c*1904 (Country Life)



A view of the *c*1840 south pond island, in *c*1910

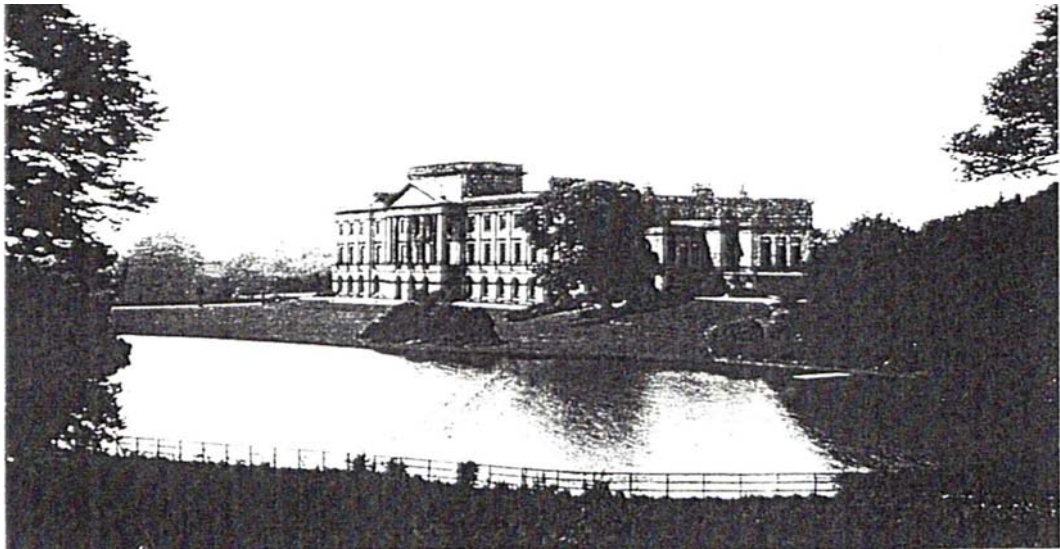
Plate 9a: Photographic Record, South Pond *c*1900-1950



A view through to Hampers wood from East Terrace c1904



Island and view to Hampers wood showing the newly planted western hemlock, now prominent on the lake edge.



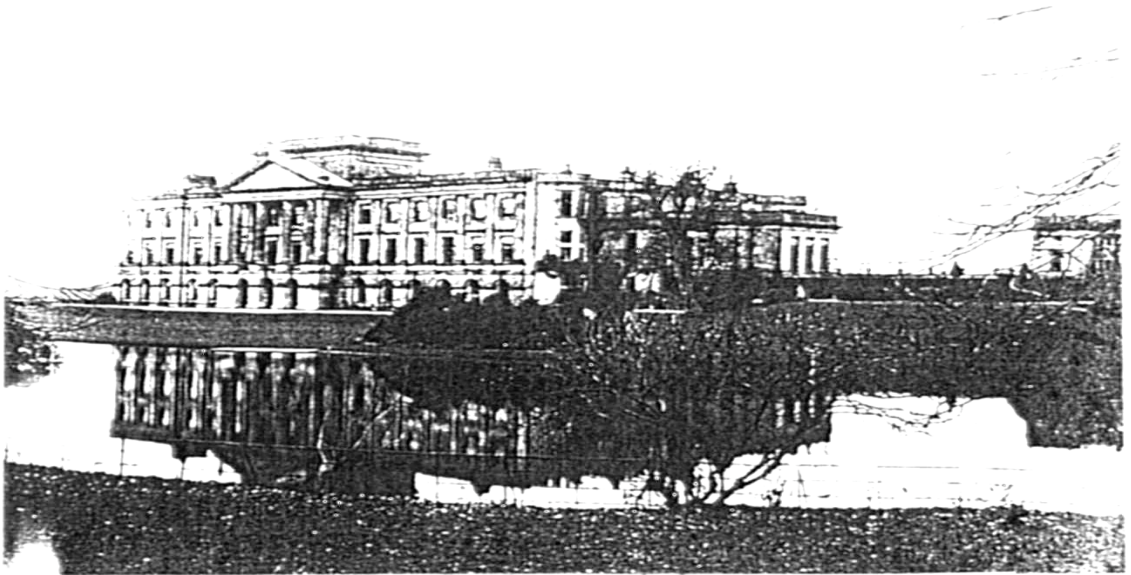
South and East ranges c1900



South elevation with conical yews as per the the east terrace. These were the favoured of Vicary Gibbs who advised Lord Newton on the planting of the lower west terrace.



View from the east terrace steps c1905 detailing climbers over the east range



South front with eighteenth century specimen lime

Plate 10b: Photographic Record, South Front c1900-1950



The die back of the old tree south-west of the hall is apparent here



A view showing the leaning stem of the lime, but no crown

Plate 10c: Photographic record, South Front c1900-1950



The Dutch Garden c1904 in early summer

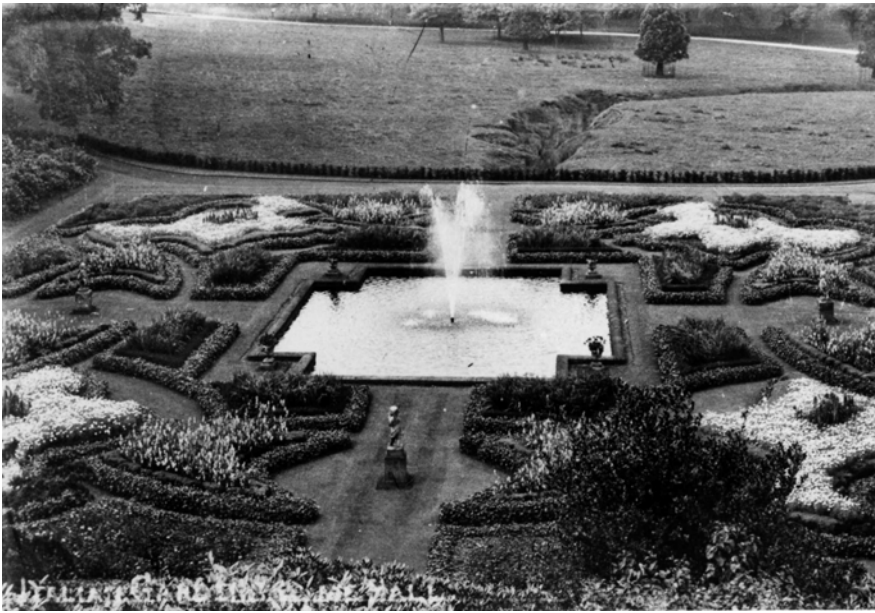


Photograph dated c1947 The small sculptures appear to be broken off.



c1900-1910 Post card view

Plate 11a: Photographic Record, 'Dutch' Garden c1900-1950

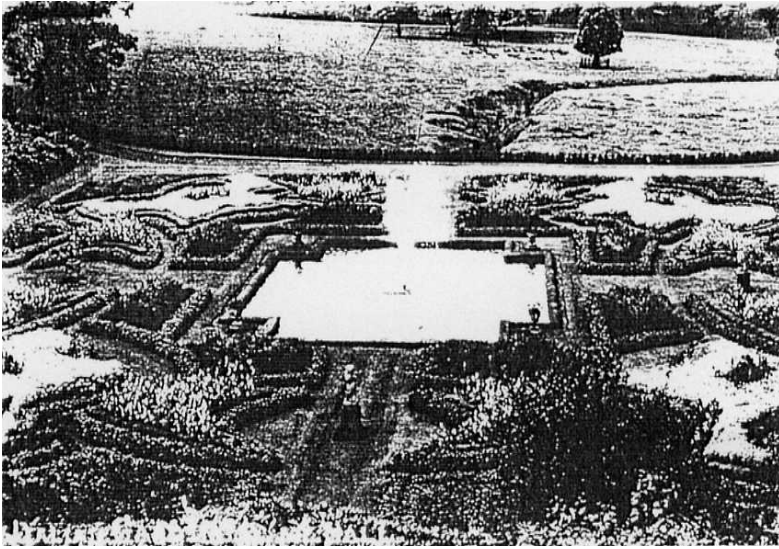


A 1903 view of the area then known as the Italian Gardens. A new yew hedge was planted to screen the course of the beck across the Swine Park

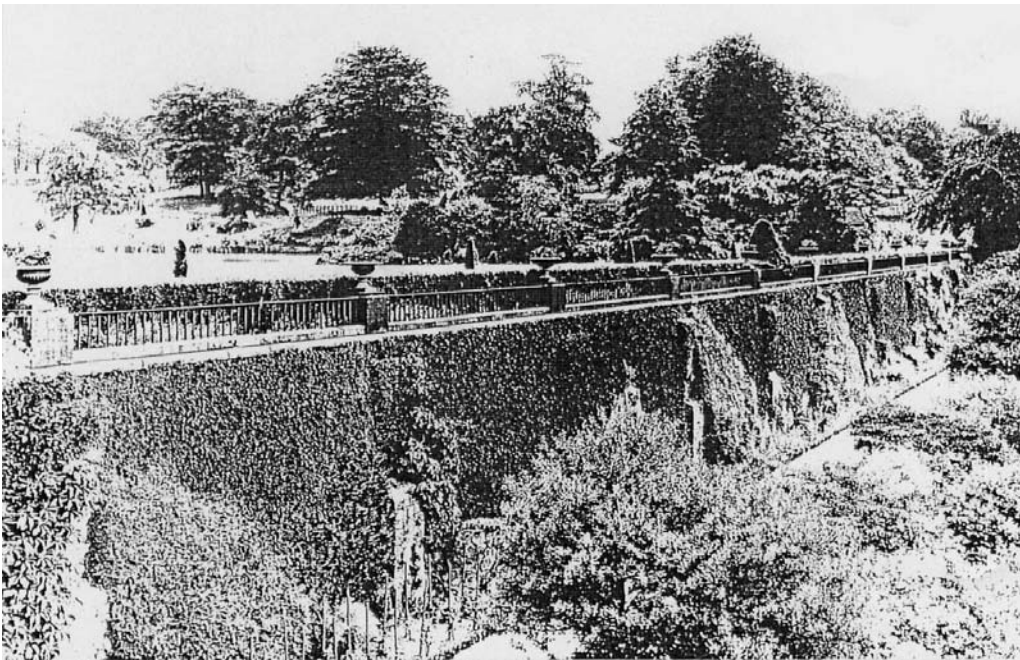


A 1904 Country Life record of the virginia creeping the south terrace wall. In the south park the lime avenue is visible.

Plate 11b: Photographic Record, 'Dutch' Garden c1900-1950



A 1903 view of the area then known as the Italian Gardens. A new yew hedge was planted to screen the course of the beck across the Swine Park



1904 Country Life record of the virginia creeping the south terrace wall. In the south park the lime avenue is visible.

Plate 11c: Photographic Record, 'Dutch' Garden c1900-1950



The Green Drive which was the main approach for two centuries was turfed over in 1903, in favour of the new main drive, following a more gentle and sheltered incline west of the old Hawthorne Drive.



The original west drive from Macclesfield emerges from the knoll (Turtle Brew), and gave the visitor a striking view of the hall entering Swine Park. This view is now dominated by the main visitor car park.



The convergence of the drives in the north forecourt parts the avenues



A third drive to the east lodge enters the high moorland of Cater Slack and has views to the Cage and Pennines.

Plate 12b: Driveway Photographs



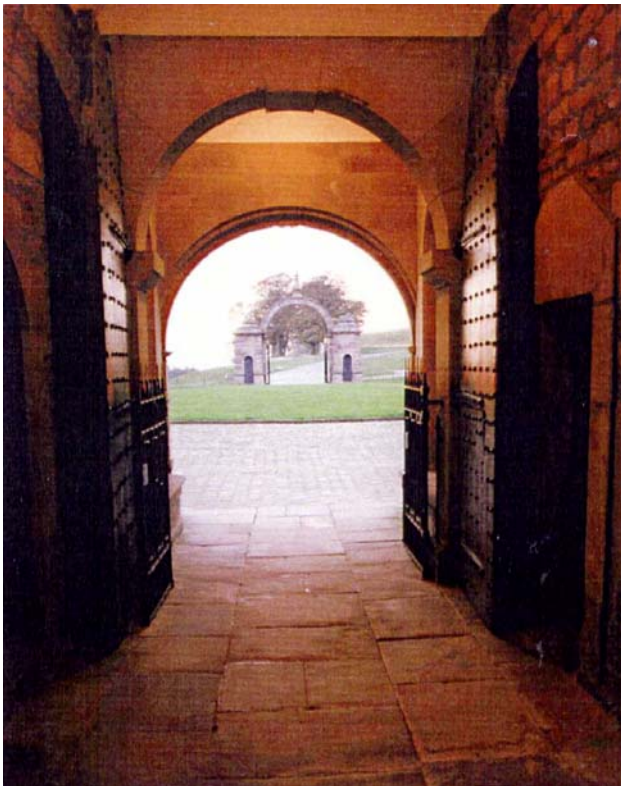
The North elevation.



Mid nineteenth century Yew trees reinforcing symmetry to the drive



Main gates and railings as drafted on the c1814 Lewis Wyatt plan.



View of the north axis to the Green drive



The Lewis Wyatt c1815 Walls and stepped terraces created after the removal of the bowling lawn. The project was completed by Irish architect Alfred Darbyshire c1864



Scene of the Yew tree crown cut out for the Lord Newton view of the lantern

Plate 14a: East Terrace Photographs



View to the lantern from the Hall roof and showing the trees and Turf House Meadow which remove continuity of the vista

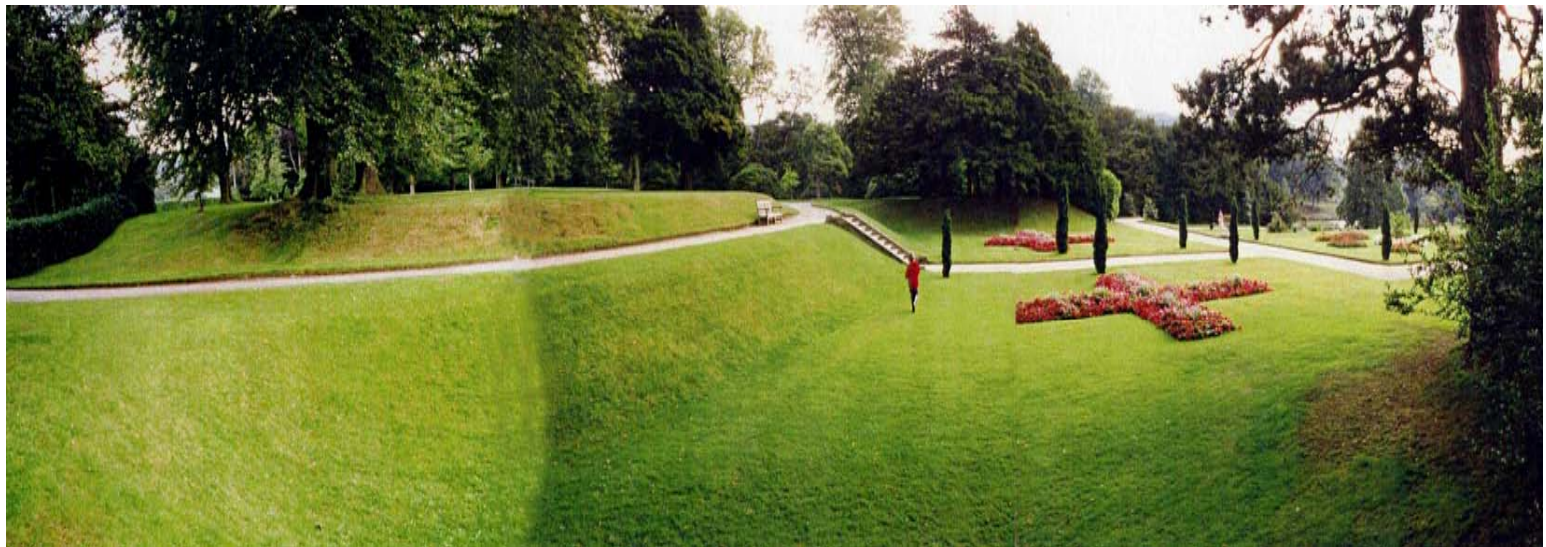


The site of the old south-east pavilion, at the same position and level as the of the Rose Garden path at the line of the steps.

Plate 14b: East Terrace photographs



The South East end of the pond correlates with the hollow now seen in the upper terrace.

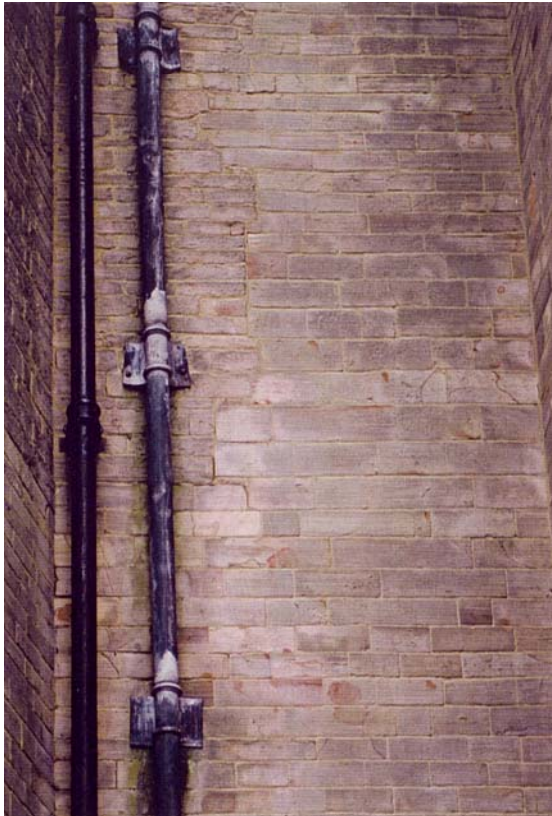


The elevated pond of 1740 was silted or filled up in the nineteenth century prior to the c1864 east terrace extension. The original terrace limit was defined by the bowling green.

Plate 15: East Terrace Old Ribbon Pond Photographs



Wyatt's work extended to the east bays and the low level service corridor linking to the north side. This is visible behind the planting



Junction of the Lewis Wyatt work is conspicuous on the east Hall elevation.

Plate 16a: East Terrace Walls Photographs

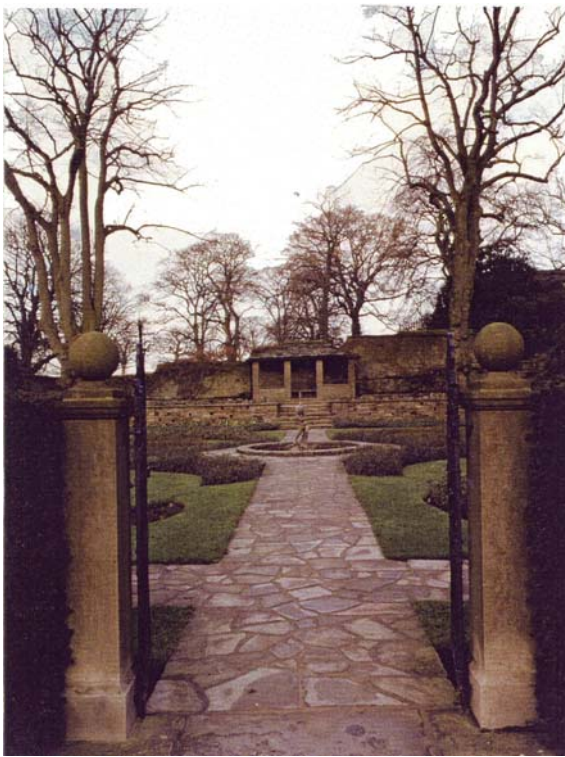


The adjoining terrace walls were attributed to Alfred Darbyshire.

Further detail of the recent restoration.



Plate 16b: East Terrace Walls Photographs



View of the Rose
Garden from the South
Gate

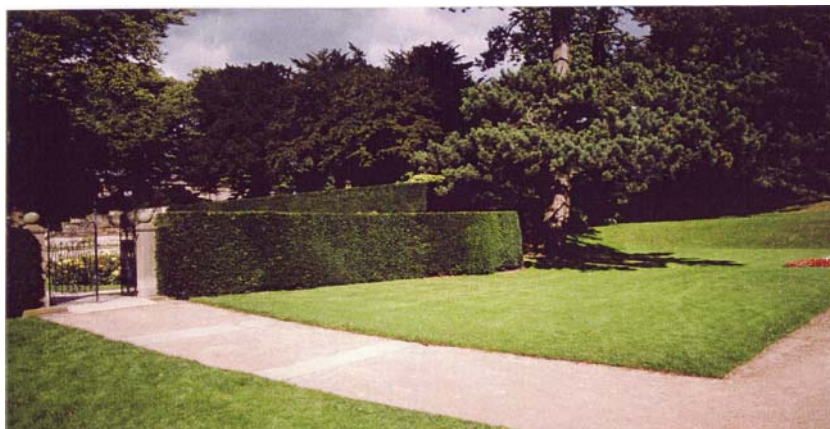


According to plan overlays of the earlier gardens, the path here marks out the north-western pavilion.



View of the 1913 garden, created soon after the removal of the orchid houses (pre 1871). The garden is sited at the east edge of the old bowling lawn and is set at the same level (according to the c1814 Lewis Wyatt survey).

Rose garden viewed from the pavilion.



The yews in the background correspond symmetrically with those at the main steps. Planted on the bowling green, they frame the Lantern vista



The pre c1824 transition between the early terraced gardens and parkland of Turf House Meadow was dictated by the pond.



The uneven rising ground east of the terraces, extending to Swine Park appears to be the natural landform and likely pre-dates the Hall and Gardens.

Plate 18a: Pleasure Ground - the Link to the East Terraces photographs



The earlier c1740 plan shows this area divided by a semi-circular park fence. The remaining old beeches stand just outside the 65m fence radius.



The herbaceous border pictured is sited over the line of the old fish ponds and lines the existing c1864 path complex.



Hampers bridge over Killtime (c 1751). If the arch included in the c1740 plan was built and subsequently reused, the present structure may have reclaimed the stone, which may explain the numbered blocks in the bridge.



The existing path network correlates with the survey of 1871.

Plate 19a: Pleasure grounds - Killtime Photographs



The natural vale leading to Swine Park, truncated by the South Terrace, provides a romantic contrast as a natural aisle to the park. The c1740 plan sites sculptures and a triumphal arch and acknowledges the beauty of the valley.



The leaning hornbeam is close to the site of the arch proposed in the c1740 plan



This South-East view of the Hall is little changed from 1840s formation of the island.



The Silver Lime planted in c1946 is sited near to the original late eighteenth century lime planted close to the base of the bowling green embankment.

Plate 20a: The South Lawns and Pond



The view from the Wyatt tower details the lime dominated by other features ie the remodelled lake and island.



The south edge of the lake has been pushed back with successive enlargements of the pond, as seen on the *c*1850 and *c*1871 surveys.



The Leoni west front overlooking the Macclesfield approach from the raised terrace or 'Bull Pen' in the foreground. The terrace was redesigned c1813-1820; the same phase as the Lewis Wyatt work.



The raising of the terraces lost the view into the Swine Park, but created a new landscape.

Plate 21a: The West Terrace and Dutch Garden Photographs



The Dutch garden is so called due to the planting style, rather than the Renaissance style terrace. Referred to as 'the old garden' in the late eighteenth century, water has been a component there ever since that time.



The 5m retaining walls were re-built along the alignments of the original ones, enabling a new intermediate terrace walk. The walls were extensively repaired in the 1970s.

Plate 21b: West Terrace and Dutch Garden



The view shows across the Dutch Garden shows the limit of the garden obstructing the elevated West Terrace. It is named after the Hon Vicary Gibbs, who advised the planting detail (c1906).



The ornamental planting is not part of the broader design



Plate 23c

The garden as seen from the north forecourt forecourt shows the informal planting enclosed by a frame of mature yew trees



Plate 22d

The Vicary Gibbs garden now screens the visitor car-park from the terrace, but soon will achieve undue influence upon the landscape.

Plate 22: Vicary Gibbs Garden Photographs.



The Leoni west front overlooking the Macclesfield approach from the raised terrace or 'Bull Pen' in the foreground. The terrace was redesigned c1813-1820; the same phase as the Lewis Wyatt work.



The raising of the terraces lost the view into the Swine Park, but created a new landscape.

Plate 21a: West Terrace and Dutch Garden Photographs



The Dutch garden is so called due to the planting style, rather than the Renaissance style terrace. Referred to as 'the old garden' in the late eighteenth century, water has been a component there ever since that time.



The 5m retaining walls were re-built along the alignments of the original ones, enabling a new intermediate terrace walk. The walls were extensively repaired in the 1970s.

Plate 21b: West Terrace and Dutch Garden Photographs



The view shows across the Dutch Garden shows the limit of the garden obstructing the elevated West Terrace. It is named after the Hon Vicary Gibbs, who advised the planting detail (c1906).



The ornamental planting is not part of the broader design



The garden as seen from the north forecourt forecourt shows the informal planting enclosed by a frame of mature yew trees



The Vicary Gibbs garden now screens the visitor car-park from the terrace, but soon will achieve undue influence upon the landscape.

Plate 22b: Vicary Gibbs Garden Photographs



The Green Drive cut into cage hill extends some 400m on axis, enabling limited views to the hall. The North Gate route however allows views to the Cheshire plain.



The twelve remaining sycamores denote the curve of the old ride of the cage and are not connected to the seventeenth century planning.

Plate 23a: Views and Axis Photographs



On the South axis the Lime avenue sweeps to the horizon, while the parkland trees close other distant views.



The east axis an old vista which which was established before the painting of *c1676*. The significance of the Great hall is reflected in the east range.

A corridor has been cut into the recent wooded slopes to retain views of the lantern.

Plate 23b: Views and Axis Photographs



The 400m south avenue of a clone of European pines is set out with rows 6m apart (as seen at Versailles). The estimated age is currently based on ring counts of storm damaged trees indicating replanting took place c1840. This is 180 years after the original avenue, believed to planted soon after the Restoration of c1660



View from the Wyatt tower



Recent replanting at the southern end of the avenue seeks to restore the original grandeur. At 400m the 'key hole' view hides the south front, while the cage appears to sit floating in the trees



South front view at 200m



Groups of four limes in the Pleasure Ground and meadow frame the old vista of the lantern in the manner of the c1740 plan of Lyme. Beyond the limes in the foreground is the Round, a woodland in the c1824. It is central to the Turf House Meadow, but offset from the Lantern scene.

Plate 25a: Turfhouse Meadow



In stem growth, the yew hedge appears to be post c1947, but the c1946 photograph shows a mature hedge on the same line, which may have been replaced soon after that date. Yew hedges of similar size are the 1902 Dutch Garden hedge and the c1913 Rose Garden.



The track leading to the quarry follows the line of the ridge above the pleasure grounds. To hide the garden deer fence and maintain privacy from the footway, the yew hedge would have been logical.



The walled enclosure (145m x 70m) shown on the *c*1740 plan of Lyme was clearly scratched out on the original *c*1824 survey plan. It may have been an early walled productive garden, or an animal enclosure. It was set apart from the ornamental gardens (as seen on other estates at this time). Now parkland, the cedar and yew clumps alone echo the old enclosure. A ridge is evident on the line of the most southern connecting wall (or fence) which extended to Bull close. The walls linked to the Killtime and avenue are not so readily discernible.

Plate 26: Walled Enclosure in Hampers



Damage to the Rhododendron bushes, Coalpit Clough.



Sheepscar on Park Moor recolonised vegetation.

Plate 27: Erosion at Coalpit Clough and Park Moor



Bare soil scar at north side of Poynton Brook - scar and disintegrating turf cover



Bare soil scar at Pursefield Wood - tracks and bare soil expose by deer

Plate 28a: Bare soil scar at Poynton Brook and Pursefield Wood



Bare soil scar at North side Poynton Brook - scar and disintegrating turf cover



Bare soil scar at tributary valley to Poynton Brook - tracked and disintegrating turf cover.



Tracking of the valley floor at Cater Slack



Tracking of the valley floor at Park Moor



Tracking of the valley floor at Coalpit Clough



Stream bank broken down by red deer



Deer track crossing coalpit clough



Stabilised margins of scars - gorse and grasses around the margins, invading shale scar



Stabilised margins of scars - mossy, undisturbed backscar

Plate 31: Stabilised margins of scars



Deer 'wallows' above eastern escarpment, Park Moor



Deer 'wallows' at the head of
Tributary valley, Park Moor



Deer 'wallows' at Tributary Valley, Coalpit
Clough



'Rutting Track', below eastern escarpment, Park Moor - east side



Rutting track, below eastern escarpment, Park Moor - west side

Plate 33: 'Rutting Track' at Park Moor



Heather Moor, Dale Top - grazed



Heather Moor, Dale Top - ungrazed, within enclosure



The cage following a major programme of restorations (Recent Works 5)



The Kennels following refurbishment - showing repairs to the eastern wall (Recent Works 5)

Plate 35: Restored Buildings - Cage and Kennels



The restored Wyatt Garden looking north (Recent Works 10)



The restored West Terrace Garden (Recent Works 11)



Recently established Paddock Cottage to Cage vista viewed from Paddock Cottage
(Recent Works 13)



Restored Lime Avenue - looking
south (Recent Works 15)



Replanted Turtle Brew Round (Recent Works 16)



Replanted Drinkwater Round (Recent Works 25)

Plate 38: Replanted Rounds: Turtle Brew and Drinkwater Rounds



Repaired Hase Bank Wall (Recent Works 19)



Wall by Drinkwater Round during restoration (Recent Works 24)

Plate 39: Repaired Walls - Hase Bank and adjacent to Drinkwater Round



Restored Paddock Cottage - looking north (Recent Works 21)

Deer 'wallows' above eastern escarpment, Park Moor



The Stag House following excavation

Plate 40: Restored / Excavated Buildings: Paddock Cottage and the Stag House



The area of Cluse Hay which has been replanted with up to 5000 trees