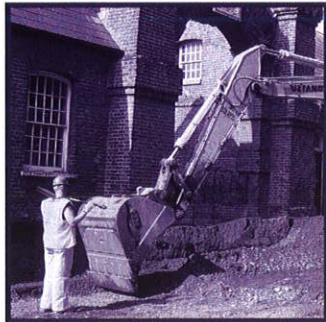


New Block Extension  
Willow Court North  
Cranford House School  
Moulsford  
Oxfordshire



**Archaeological Watching Brief**



**Oxford Archaeology**

16th April 2002

**Client Name:**  
**Hudson House Partnership**

Issue N<sup>o</sup>: 1

OA Job N<sup>o</sup>: 1271

Planning Ref N<sup>o</sup>: PO1/W0346/LB

NGR: SU 587 842

**Client Name:** Hudson Hives Partnership

**Client Ref No:**

**Document Title:** Willow Court North, Cranford House School, Moulsoford,  
Oxfordshire.

**Document Type:** Watching Brief

**Issue Number:** 1

National Grid Reference: NGR SU 587 842

Planning Reference: PO1/W0346/LB

OA Job Number: 1271

Site Code: MOCS 02

Invoice Code: MOCSWB

Museum Accession No:

Prepared by: James Mumford

Position: Assistant Supervisor

Date: 15th April 2002

Checked by: Jon Hiller

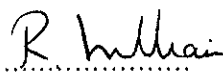
Position: Senior Project Manager

Date: 15th April 2002

Approved by: Robert Williams

Position: Director, Head of Business and Operations

Date: 15th April 2002

Signed.....

Document File Location U:\OAU\wbReports\Oxfordshire\Mocs.doc

Graphics File Location Server 10:/oaupubs 1/MOCSWB\*Cranford House  
School\*RMS\*15.04.02

Illustrated by Roz Smith

**Disclaimer:**

*This document has been prepared for the titled project or named part thereof and should not be relied upon or used for any other project without an independent check being carried out as to its suitability and prior written authority of Oxford Archaeology being obtained. Oxford Archaeology accepts no responsibility or liability for the consequences of this document being used for a purpose other than the purposes for which it was commissioned. Any person/party using or relying on the document for such other purposes agrees, and will by such use or reliance be taken to confirm their agreement to indemnify Oxford Archaeology for all loss or damage resulting therefrom. Oxford Archaeology accepts no responsibility or liability for this document to any party other than the person/party by whom it was commissioned.*

**Oxford Archaeology**

© Oxford Archaeological Unit Ltd 2002

Janus House

Osney Mead

Oxford OX2 0ES

t: (0044) 01865 263800

f: (0044) 01865 793496

e: [info@oxfordarch.co.uk](mailto:info@oxfordarch.co.uk)

w: [www.oxfordarch.co.uk](http://www.oxfordarch.co.uk)

Oxford Archaeological Unit Limited is a Registered Charity No: 285627

## New Block Extension at Willow Court North, Cranford House School, Moulsoford, Oxfordshire

### *ARCHAEOLOGICAL WATCHING BRIEF REPORT*

#### CONTENTS

Summary.....	1
1 Introduction .....	1
1.1 Location and scope of work .....	1
1.2 Geology and topography .....	1
1.3 Archaeological and historical background .....	1
2 Project Aims and Methodology.....	2
2.1 Aims .....	2
2.2 Methodology.....	2
3 Results .....	2
3.1 Description of deposits.....	2
3.2 Finds .....	2
3.3 Palaeo-environmental remains .....	2
4 Discussion And Conclusions.....	2
Appendix 1 Archaeological Context Inventory .....	3
Appendix 2 Bibliography and references.....	3
Appendix 3 Summary of Site Details.....	3

#### LIST OF FIGURES

- Fig. 1 OS Site location map  
Fig. 2 Site plan of Ground Reduction and Location of Soakaways

## SUMMARY

*In March 2002 Oxford Archaeology (OA) carried out an archaeological watching brief at Willow Court North, Cranford House School, Moulsoford, Oxfordshire (NGR SU 587 842). The work was commissioned by Hudson Hives Partnership in advance of the construction of a classroom block extension. The watching brief revealed no archaeological features due to modern landscaping.*

### 1 INTRODUCTION

#### 1.1 Location and scope of work

- 1.1.1 In March 2002 Oxford Archaeology (OA) carried out an archaeological watching brief at Willow Court North, Cranford House School, Moulsoford, Oxfordshire (Fig. 1). The work was commissioned by Hudson Hives Partnership in respect of a planning application for classroom block extension (Planning Application No. PO1/W0346/LB)
- 1.1.2 A project brief was agreed between the Oxfordshire County Archaeological Service and Oxford Archaeology. OA prepared a Written Scheme of Investigation detailing how it would undertake a watching brief at the site.

#### 1.2 Geology and topography

- 1.2.1 The site is located at the west of the village of Moulsoford, about 0.5 km from the Thames (NGR SU 587 842) at *c* 40 m OD and is *c* 0.1 ha in extent. The solid geology in this part of Moulsoford is the chalk of the Downs.
- 1.2.2 The site is situated at the base of the slope of the Downs and in the area between Willow Court Road and the Willow Court North Buildings (Fig. 2). This area of grass had been terraced, cutting into the natural chalk to give a flat area of approximately 18 x 60 m and had been landscaped with a low stone retaining wall and flower beds.

#### 1.3 Archaeological and historical background

- 1.3.1 The archaeological background to the watching brief was prepared for the WSI for the project (OA, 2002) and is reproduced below.
- 1.3.2 The development site is in an area of archaeological potential. Prehistoric and Roman finds are known in the south and west of the development area, and a Bronze Age and Iron Age settlement is known immediately to the west of the development area, where two gold torque's were found. Finds from Moulsoford itself include a Mesolithic axe and Roman coins, and medieval and Romano-British pottery (Paul Smith, County Archaeological Services, *pers comm.*).

## 2 PROJECT AIMS AND METHODOLOGY

### 2.1 Aims

- 2.1.1 To identify and record the presence/absence, extent, condition, quality and date of archaeological remains in the areas affected by the development.
- 2.1.2 To make available the results of the archaeological investigation.

### 2.2 Methodology

- 2.2.1 The area of the development was reduced and levelled using a 360<sup>0</sup> machine. Two new soakaways were also excavated at the west end of the site (Fig. 2).
- 2.2.2 A site plan was compiled at a scale of 1:100. A general photographic record of the work was made. Recording followed procedures detailed in the *OAU Fieldwork Manual* (ed D Wilkinson, 1992).

## 3 RESULTS

### 3.1 Description of deposits

- 3.1.1 The excavation showed that the topsoil of light greyish brown silty clay loam (1) was 0.5 m thick on top of the slope, but that it had been reduced by terracing to be only 0.3 m thick. This overlay solid chalk natural. A ceramic land drain was observed running across the terrace.

### 3.2 Finds

- 3.2.1 No finds were recovered from the watching brief.

### 3.3 Palaeo-environmental remains

- 3.3.1 No environmental sample was taken during the watching brief.

## 4 DISCUSSION AND CONCLUSIONS

- 4.1.1 No archaeological features or deposits were observed in the area of the new building and in the soakaways during the excavation. It would appear that any archaeological features that might have existed could have been removed during the excavation of the terrace.

## APPENDICES

## APPENDIX 1 ARCHAEOLOGICAL CONTEXT INVENTORY

<i>Context</i>	<i>Type</i>	<i>Depth</i>	<i>Width</i>	<i>Height</i>	<i>Comments</i>	<i>Finds</i>
1	Layer	0.5-0.3 m			Topsoil	None
2	Natural				Natural chalk	

## APPENDIX 2 BIBLIOGRAPHY AND REFERENCES

OA 2002, *Willow Court North, Cranford House School, Moulsoford, Oxfordshire* Written Scheme of Investigation

## APPENDIX 3 SUMMARY OF SITE DETAILS

**Site name:** Willow Court North, Cranford House School, Moulsoford, Oxfordshire

**Site code:** MOCS 02

**Grid reference:** NGR SU 587 842

**Type of watching brief:** Excavation and ground reduction for the construction of new block extension.

**Date and duration of project:** Two site visits from the 25<sup>th</sup> – 26<sup>th</sup> March 2002.

**Area of site:** No archaeological features or deposits due to modern landscaping.

**Summary of results:** No archaeological features or deposits were observed.

**Location of archive:** The archive is currently held at OA, Janus House, Osney Mead, Oxford, OX2 0ES, and will be deposited with Oxfordshire County Museums Service in due course, under the following accession number:



Scale 1:25,000

Reproduced from the Landranger 1:50,000 scale by permission of the Ordnance Survey on behalf of The Controller of Her Majesty's Stationery Office  
© Crown Copyright. 1996 All rights reserved. Licence No. AL 100005569

Figure 1: Site Location

Server ID: 00000000 - CAMOCSWP - Cranford House - School - RMS - 15.04.05

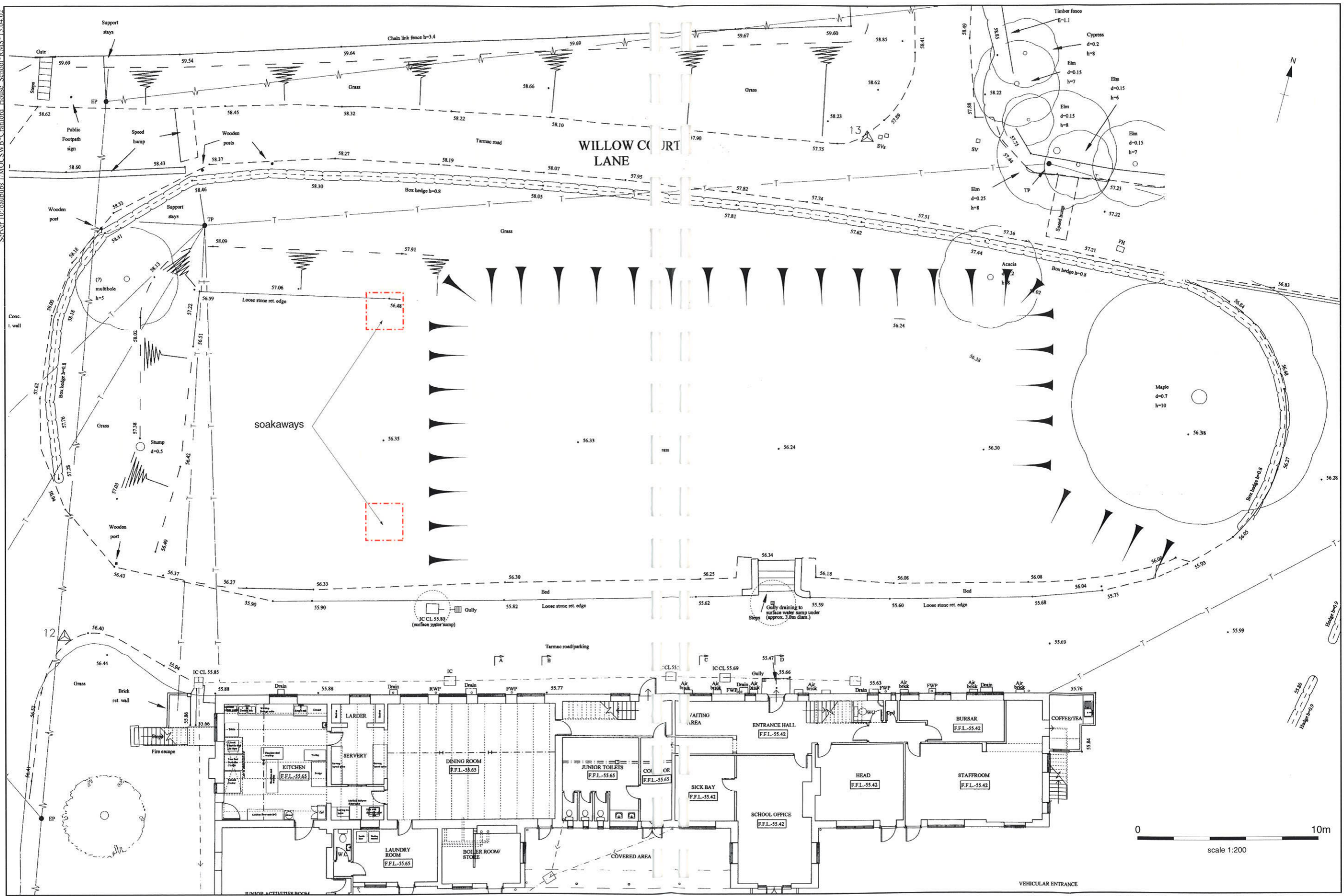


Figure 2: Ground Reduction and Location of Soakaways





## Oxford Archaeology

Janus House  
Osney Mead  
Oxford OX2 0ES

t: (0044) 01865 263800  
f: (0044) 01865 793496  
e: [info@oxfordarch.co.uk](mailto:info@oxfordarch.co.uk)  
w: [www.oxfordarch.co.uk](http://www.oxfordarch.co.uk)



## Oxford Archaeology North

Storey Institute  
Meeting House Lane  
Lancaster LA1 1TF

t: (0044) 01524 848666  
f: (0044) 01524 848606  
e: [lancinfo@oxfordarch.co.uk](mailto:lancinfo@oxfordarch.co.uk)  
w: [www.oxfordarch.co.uk](http://www.oxfordarch.co.uk)

**Director:** David Jennings, BA MIFA FSA



Oxford Archaeological Unit is a  
Private Limited Company, N<sup>o</sup>: 1618597  
and a Registered Charity, N<sup>o</sup>: 285627

**Registered Office:**

Oxford Archaeological Unit  
Janus House, Osney Mead, Oxford OX2 0ES