



INTAKE FARM, CHEVIN END ROAD, GUISELEY

**Digitised
Photographs and
Indices**



Oxford Archaeology North

Revised January 2007

Peter Gamble Architects

Issue No: 2005-6/392

OA North Job No: L9345

NGR: SE 1838 5435

PROJECT NAME: Intake Farm				PROJECT CODE:L9345		SITE CODE:
FILM NO: 3			FILM TYPE:Roll		ISO:400	
FRAME	DATE	SITE	DESCRIPTION	DIR	CONDITONS	PHOTO-GRAPHER
1	18/02/2004	Barn	E. Elevation (internal) of Cow House	E		CW
2	18/02/2004	Barn				CW
3	18/02/2004	Barn				CW
4	18/02/2004	Farmhouse	Fireplace in lounge	NE		CW
5	18/02/2004	Farmhouse	" "			CW
6	18/02/2004	Farmhouse	" "			CW
7	18/02/2004	Farmhouse	Door lintel	S		CW
8	18/02/2004	Farmhouse	" "	"		CW
9	18/02/2004	Farmhouse	Dining Room	SW		CW
10	18/02/2004	Farmhouse	" "	"		CW
11	18/02/2004	Farmhouse	Detail of mortice	SE		CW
12	18/02/2004	Farmhouse	" "	"		CW
13	18/02/2004	Farmhouse	Kitchen Window/Beam	NW		CW
14	18/02/2004	Farmhouse	" "	"		CW
15	18/02/2004	Farmhouse	Kitchen Fireplace	SE		CW
16			END OF FILM			
17						
18						
19						
20						
DIR = the direction in which the camera is pointed, expressed as a compass point eg NW						

PROJECT CODE:L9345					SITE CODE:	
FILM NO: 4			FILM TYPE:Slide		ISO:200	
FRAME	DATE	SITE	DESCRIPTION	DIR	CONDITONS	PHOTO-GRAPHER
1	18/02/2004	Farmhouse	Fireplace in lounge	NE		CW
2	18/02/2004	Farmhouse	" "	"		CW
3	18/02/2004	Farmhouse	Main door	SW		CW
4	18/02/2004	Farmhouse	" "	"		CW
5	18/02/2004	Farmhouse	Dining Room	SW		CW
6	18/02/2004	Farmhouse	" "	"		CW
7	18/02/2004	Farmhouse	Detail of mortice in Dining Room	SE		CW
8	18/02/2004	Farmhouse	" "	"		CW
9	18/02/2004	Farmhouse	Kitchen Window/Beam	NW		CW
10	18/02/2004	Farmhouse	" "	"		CW
11	18/02/2004	Farmhouse	Kitchen Fireplace	SE		CW
12	18/02/2004	Farmhouse	" "	"		CW
13	18/02/2004	Farmhouse	Mullioned stair window	N		CW
14	18/02/2004	Farmhouse	" "	"		CW
15	18/02/2004	Farmhouse	Cruck blade, E face of staircase	NE		CW
16	18/02/2004	Farmhouse	" "	"		CW
17	18/02/2004	Farmhouse	Exposed cruck, bathroom	NE		CW
18	18/02/2004	Farmhouse	" "	"		CW
19	18/02/2004	Farmhouse	Exposed truss E. bedroom	SE		CW
20	18/02/2004	Farmhouse	" "	"		CW

DIR = the direction in which the camera is pointed, expressed as a compass point eg NW

PROJECT NAME: Intake Farm			PROJECT CODE:L9345		SITE CODE:	
FILM NO: 4			FILM TYPE:Slide		ISO:200	
FRAME	DATE	SITE	DESCRIPTION	DIR	CONDITONS	PHOTOGRAPHER
21		Farmhouse	Timber mark in E truss	SW		CW
22		Farmhouse	" "	"		CW
23		Farmhouse	Truss in West bedroom			CW
24		Farmhouse	" "			CW
25	19/02/2004	West of barn	West elevation from north end	SE	Sunny	TL
26	"	"	" "	"	"	"
27	"	"	" "	"	"	"
28	"	"	floor beam close up, north end of elevation(with buttress in foreground	E	"	"
29	"	"	" "	"	"	"
30	"	"	" "	"	"	"
31	"	"	South end of West elevation	E	"	"
32	"	"	" "	"	"	"
33	"	"	" "	"	"	"
34			North Elevation	"	"	"
35	"	"	" "	"	"	"
36	"	"	" "	"	"	"
37			END OF FILM			
38						
39						
40						

DIR = the direction in which the camera is pointed, expressed as a compass point eg NW

PROJECT NAME: Intake Farm			PROJECT CODE:L9345		SITE CODE:	
FILM NO: 5			FILM TYPE:Roll		ISO:400	
FRAME	DATE	SITE	DESCRIPTION	DIR	CONDITONS	PHOTO-GRAPHER
1	18/02/2004	Farmhouse	Mullioned window in stairs	N		CW
2	"	"	" "			"
3			Cruck in E face of stairs	NE		"
4	"		" "	"		"
5	"	"	Cruck in E wall of bathroom	NE		"
6	"	"	" "	"		"
7	"	"	Exposed truss in E bedroom	SE		"
8	"	"	" "	SE		"
9	"		Timber marks on E face, east truss	SE		"
10	"		" "	"		"
11	"	"	Truss in West bedroom	SE		"
12	"	"	" "	"		"
13	20/12/2004	Barn	Central South elev. Rectified	N		"
14	"	"	" "	"		"
15	"	"	" "	"		"
16			END OF FILM			
17						
18						
19						
20						

DIR = the direction in which the camera is pointed, expressed as a compass point eg NW

PROJECT NAME: Intake Farm			PROJECT CODE: L9345		SITE CODE:	
FILM NO:6			FILM TYPE:Colour Slide		ISO:200	
FRAME	DATE	SITE	DESCRIPTION	DIR	CONDITONS	PHOTO-GRAPHER
1	19/02/2004	Bldgs to West of Barn	South gable	NW	Sunny	TL
2	"	"	" "	"	"	"
3	"	"	" "	"	"	"
4	"	"	South gable in shade	"	in shadow	"
5	"	"	Shippon (attached to barn)	NW	"	"
6	"	"	" "	"	"	"
7	20/02/2004	"	Hayloft	SW	Flash	"
8	"	"	" "	"	"	"
9	"	"	Shippon to SW of barn	"	"	"
10	"	"	" "	"	"	"
11	"	Barn	S. external elevation central part rectified	N	Sunny	CW
12	"	"	" "	"	"	"
13	"	"	S. external elevation of barn. E end rectified	"	"	"
14	"	"	" "	"	"	"
15	"	"	S. elevation West end (lower) rectified	"	"	"
16	"	"	" "	"	"	"
17	"	"	S.elevation, West end (upper) rectified	"	"	"
18	"	"	" "	"	"	"
19	"	"	N. elevation, East end rectified	S	"	"
20	as above	as above	as above - same photo	"	"	"

DIR = the direction in which the camera is pointed, expressed as a compass poiint eg NW

PROJECT NAME: Intake Farm			PROJECT CODE: L9345		SITE CODE:	
FILM NO:6			FILM TYPE:Colour Slide		ISO:200	
FRAME	DATE	SITE	DESCRIPTION	DIR	CONDITONS	PHOTO-GRAPHER
21	20/02/2004	Farmhouse	North elevation (rear) of farmhouse rectified	S	Sunny	CW
22	"	"	" "	"	"	"
23	"	Barn	N elevation of barn (east central lower) rectified	"	"	"
24	"	"	" "	"	"	"
25	"	"	N elevation of barn (west central lower) rectified	"	"	"
26	"	"	" "	"	"	"
27	"	"	N elevation of barn (west end lower) rectified	S	"	"
28	"	"	" "	"	"	"
29	"	Bldg to west of barn	N elevation of bldg attached to barn rectified	"	"	"
30	"	"	" "	"	"	"
31	"	Barn	N elevation east end rectified	"	"	"
32	"	"	" "	"	"	"
33	"	"	N elevation (upper) west end rectified	"	"	"
34	"	"	" "	"	"	"
35	"	"	N elevation (upper) east end rectified	"	"	"
36	"	"	" "	"	"	"
37	"	"	Internal S elevation of barn West end rectified	"	"	"
38			END			
39						
40						

DIR = the direction in which the camera is pointed, expressed as a compass poiint eg NW

PROJECT NAME: Intake Farm			PROJECT CODE: L9345		SITE CODE:	
FILM NO:8			FILM TYPE:Roll		ISO:400	
FRAME	DATE	SITE	DESCRIPTION	DIR	CONDITONS	PHOTO-GRAPHER
1	20/02/2004	Barn	East end of south elev rectified	N	Sunny	CW
2	"	"	" "	"	"	"
3	"	"	" "	"	"	"
4	"	"	West end (lower) of s elevation rectified	"	"	"
5	"	"	" "	"	"	"
6	"	"	" "	"	"	"
7	"	"	West end (upper) rectified of south elevation	N	"	"
8	"	"	" "	"	"	"
9	"	"	" "	"	"	"
10	"	"	N elevation, east end rectified	S	In shade	"
11	"	"	" "	"	"	"
12	"	"	" "	"	"	"
13	"	Farmhouse	N elevatin (back) of farmhouse	S	"	"
14	"	"	" "	"	"	"
15	"	"	" "	"	"	"
16			END OF FILM			
17						
18						
19						
20						

DIR = the direction in which the camera is pointed, expressed as a compass poiint eg NW

PROJECT NAME: Intake Farm			PROJECT CODE: L9345		SITE CODE:	
FILM NO:9			FILM TYPE:Roll		ISO:	
FRAME	DATE	SITE	DESCRIPTION	DIR	CONDITONS	PHOTO-GRAPHER
1	20/02/2004	Barn	N elevation (east central lower) rectified	S	In shade	CW
2	"	"	" "	"	"	"
3	"	"	" "	"	"	"
4	"	"	N elevation (west central lower) rectified	"	"	"
5	"	"	" "	"	"	"
6	"	"	" "	"	"	"
7	"	"	N elevation (west end) rectified	"	"	"
8	"	"	" "	"	"	"
9	"	"	" "	"	"	"
10	"	Bldg to west of barn	N gable of bldg attached to barn rectified	S	"	"
11	"	"	" "	"	"	"
12	"	"	" "	"	"	"
13	"	"	W end of N elevation of bldg attached to barn	"	"	"
14	"	"	" "	"	"	"
15	"	"	" "	"	"	"
16			END OF FILM			
17						
18						
19						
20						
DIR = the direction in which the camera is pointed, expressed as a compass poiint eg NW						

PROJECT NAME: Intake Farm			PROJECT CODE: L9345		SITE CODE:	
FILM NO:10			FILM TYPE:Roll		ISO:	
FRAME	DATE	SITE	DESCRIPTION	DIR	CONDITONS	PHOTO-GRAPHER
1	20/02/2004	Barn	N elevation (upper) East end	S	In shade	CW
2	"	"	" "	"	"	"
3	"	"	" "	"	"	"
4	"	"	N elevation (upper) West End rectified	"	"	"
5	"	"	" "	"	"	"
6	"	"	" "	"	"	"
7	"	"	Interior easternmost Arch (lower)	S	Flash	"
8	"	"	" "	"	"	"
9	"	"	" "	"	"	"
10	"	"	" " Upper	"	"	"
11	"	"	" "	"	"	"
12	"	"	" "	"	"	"
13	"	"	Second arch from East (lower)	"	"	"
14	"	"	" "	"	"	"
15	"	"	" "	"	"	"
16			END OF FILM			
17						
18						
19						
20						
DIR = the direction in which the camera is pointed, expressed as a compass poiint eg NW						

PROJECT NAME: Intake Farm			PROJECT CODE: L9345		SITE CODE:	
FILM NO:11			FILM TYPE:Roll		ISO:	
FRAME	DATE	SITE	DESCRIPTION	DIR	CONDITONS	PHOTO-GRAPHER
1	20/02/2004	Barn	Second arch from East (upper)	S	Flash	CW
2	"	"	" "	"	"	"
3	"	"	" "	"	"	"
4	"	"	Third arch from East (upper)	"	"	"
5	"	"	" "	"	"	"
6	"	"	" "	"	"	"
7	"	"	Fourth western arch from East (upper)	"	"	"
8	"	"	" "	"	"	"
9	"	"	" "	"	"	"
10	23/12/2004	"	Third arch from East lower	"	Dark	"
11	"	"	" "	"	"	"
12	"	"	" "	"	Flash	"
13	"	"	Western arch	"	Dark	"
14	"	"	" "	"	"	"
15	"	"	" "	"	Flash	"
16			END OF FILM			
17						
18						
19						
20						

PROJECT NAME: Intake Farm			PROJECT CODE: L9345		SITE CODE:	
FILM NO:12			FILM TYPE:Roll		ISO: 400	
FRAME	DATE	SITE	DESCRIPTION	DIR	CONDITONS	PHOTO-GRAPHER
1	23/02/2004	Barn	Lower north face of column	S	Dark	CW
2	"	"	" "	"	Flash	"
3	"	"	Lower east face of column	N	Dull	"
4	"	"	" "	"	"	"
5	"	"	Lower south face of column	N	"	"
6	"	"	" "	"	"	"
7	"	"	Lower west face of column	E	"	"
8	"	"	unex	"	"	"
9	"	"	Upper north face of column	S	"	"
10	"	"	" "	"	Flash	"
11	"	"	Upper east face of column	W	Dull	"
12	"	"	" "	"	Flash	"
13	"	"	Upper S face of column	N	Bright	"
14	"	"	" "	"	"	"
15						
16			END OF FILM			
17						
18						
19						
20						

DIR = the direction in which the camera is pointed, expressed as a compass point eg NW

PROJECT NAME: Intake Farm			PROJECT CODE: L9345		SITE CODE:	
FILM NO:13			FILM TYPE:Roll		ISO: 400	
FRAME	DATE	SITE	DESCRIPTION	DIR	CONDITONS	PHOTO-GRAPHER
1	23/02/2004	Barn	W face of column central	E	Bright	CW
2	"	"	" "	"	"	"
3	"	"	West face of column upper	E	"	"
4	"	"	" "	"	Flash	"
5	"	"	General shot of arcade	SW	Bright	"
6	"	"	" "	"	Flash	"
7	"	"	" "	SE	Bright	"
8	"	"	" "	"	Flash	"
9	"	"	Upper west face of porch	E	Bright	"
10	"	"	" "	"	Flash	"
11	"	"	Floor joists & door above porch	SE	Bright	"
12	"	"	" "	"	Flash	"
13	"	"	Stallings in barn W of main barn	NW	Bright	"
14	"	"	" "	"	Flash	"
15	"	"	" "	NE	"	"
16			END OF FILM			
17						
18						
19						
20						

DIR = the direction in which the camera is pointed, expressed as a compass poiint eg NW

PROJECT NAME: Intake Farm			PROJECT CODE: L9345		SITE CODE:	
FILM NO:14			FILM TYPE:Roll		ISO: 400	
FRAME	DATE	SITE	DESCRIPTION	DIR	CONDITONS	PHOTO-GRAPHER
1	23/02/2004	Shippon W of barn	Roofspace of Shippoin & arcade buttress	NE	Dark	CW
2	"	"	" "	"	Flash	"
3	"	Shippon	Detail of buttress	N	"	"
4	"	"	" "	"	"	"
5	"	"	E external elev of Shippom (north)	W	Bright	"
6	"	"	" "	"	"	"
7	"	Farm	" " South & gable	NW	"	"
8	"	"	" "	"	"	"
9	"	"	" "	"	"	"
10	"	"	Gable of Shippon west of barn	N	"	"
11	"	"	" "	"	"	"
12	"	"	West elevation of Shippon	E	"	"
13	"	"	" "	"	"	"
14	"	Farmstead	General shot of Farm Bldgs	NE	"	"
15	"	"	" "	NW	"	"
16			END OF FILM			
17						
18						
19						
20						

DIR = the direction in which the camera is pointed, expressed as a compass poiint eg NW

PROJECT NAME: Intake Farm			PROJECT CODE: L9345		SITE CODE:	
FILM NO:15			FILM TYPE:Slide		ISO: 200	
FRAME	DATE	SITE	DESCRIPTION	DIR	CONDITONS	PHOTO-GRAPHER
1	23/02/2004	Barn	General shot of Arcade	SW	Dull	CW
2	"	"	" "	"	"	"
3	"	Shippon	E external elev of Shippon	W	Bright	"
4	"	"	" "	"	"	"
5	"	"	" "	NW	"	"
6	"	"	" "	"	"	"
7	"	Farm	General shot of Farm Bldgs	"	"	"
8	"	"	" "	"	"	"
9	"	"	Corber at E end of S elev of barn	NE	Dull	"
10	"	"	" "	"	"	"
11	"	Granary	General shot of granary	SW	Flash	"
12	"	"	" "	"	"	"
13	"	Barn	Reused timber in porch	SE		
14	"	"	" "	"		
15	"	"	" "	SW		
16	"	"	" "	"		
17	"	"	Detail of truss	SE		
18	"	"	" "	"		
19	"	"	Floor in porch	SW		
20	"	"	" "	"		

DIR = the direction in which the camera is pointed, expressed as a compass poiint eg NW

PROJECT NAME: Intake Farm			PROJECT CODE: L9345		SITE CODE:	
FILM NO:15			FILM TYPE:Slide		ISO: 200	
FRAME	DATE	SITE	DESCRIPTION	DIR	CONDITONS	PHOTO-GRAPHER
21	23/02/2004	Granary	Reused purlin S pitch Bai 2	S		
22			" "	"		
23			" " N pitcy Bai 2	N		
24			" "	"		
25	"	"	Detail of upper West gable	SW		
26	"		" "	"		
27	"	"	General shot of joist inserted into arcade column	"		
28	"	"	" "	"		
29						
30						
31						
32						
33						
34						
35						
36						
37						
38						
39						
40						
DIR = the direction in which the camera is pointed, expressed as a compass point eg NW						

PROJECT NAME: Intake Farm			PROJECT CODE: L9345		SITE CODE:	
FILM NO:16			FILM TYPE:Medium Format		ISO: 400	
FRAME	DATE	SITE	DESCRIPTION	DIR	CONDITONS	PHOTO-GRAPHER
1			S & W wall & main entrance of "Threshing" interior	SW	Dim (interior)	
2			" "	"	"	
3			" "	"	"	
4			" " Upper	"	"	
5			" "	"	"	
6			" "	"	"	
7			Carriage door, N end of porch & clinker block wall	NE	"	
8			" "	"	"	
9			" "	"	"	
10			Carriage doors	NE	"	
11			" "	"	"	
12			" "	"	"	
13			North wall of cow house/mistal	N	"	
14			" "	"	"	
15			" "	"	"	
16			END OF FILM			
17						
18						
19						
20						
DIR = the direction in which the camera is pointed, expressed as a compass poiint eg NW						

PROJECT NAME: Intake Farm			PROJECT CODE: L9345		SITE CODE:	
FILM NO:17			FILM TYPE:Medium Format		ISO: 400	
FRAME	DATE	SITE	DESCRIPTION	DIR	CONDITONS	PHOTO-GRAPHER
1		Cow House "Mistal"	NW corner of cow house (N Elev interior)	N	Dim interior	
2		"	" "	"	"	
3		"	" "	"	"	
4		"	W elev of cow house N end interior & arch	NW	"	
5			" "	"	"	
6			" "	"	"	
7			" " S End	"	"	
8			" "	"	"	
9			" "	"	"	
10			S elev of cow house & 2 doors (w end)	SW	"	
11			" "	"	"	
12			" "	"	"	
13			" " (E end)	"	"	
14			" "	"	"	
15			" "	"	"	
16			END OF FILM			
17						
18						
19						
20						
DIR = the direction in which the camera is pointed, expressed as a compass poiint eg NW						

PROJECT NAME: Intake Farm			PROJECT CODE: L9345		SITE CODE:	
FILM NO:18			FILM TYPE:35mm balck & white		ISO: 400	
FRAME	DATE	SITE	DESCRIPTION	DIR	CONDITONS	PHOTO-GRAPHER
1			S gable of Shippon "m oblique	N	o/c	
2			View through "milking parlour"	N	Dim interior	
3			" "	"	"	
4		"	" " 2m	"	"	
5			Fe lintel in E facing elev of Shippon	W	o/c	
6			" " 2m	"	"	
7			" "	"	"	
8			S gable of Shippon 2m	NW	Bright	
9			" "	"	"	
10			" "	"	"	
11			View into outhouse atached to N end of Barns	W	o/c	
12			" "	"	"	
13			" "	"	"	
14			Buttresses either side of N door to "milking parlour	S	o/c	
15			" "	"	"	
16			" "	"	"	
17			S pair of buttresses on W facing elevaion	ESE	Bright	
18			" "	"	"	
19			" "	"	"	
20			Roof scar close-up & buttress (n end of w facing elev)	"	"	

DIR = the direction in which the camera is pointed, expressed as a compass poiint eg NW

PROJECT NAME: Intake Farm			PROJECT CODE: L9345		SITE CODE:	
FILM NO:18			FILM TYPE:35mm balck & white		ISO: 400	
FRAME	DATE	SITE	DESCRIPTION	DIR	CONDITONS	PHOTO-GRAPHER
21			Roof scar close-up & butress (n end of w facing elev	ESE	Bright	
22			" "	"	"	
23			W facing elev oblique	S	"	
24			" "	"	"	
25			" "	"	"	
26			Exposed truss in E bedroom	SE	"	
27			" "	"	"	
28			Close-up of partition scars on W elev (n end) of cow house	NW	Dim interior	
29			" "	"	"	
30			S elevatin (E end) of cow house	S	"	
31			" "	"	"	
32			S elevaition (w end) of cow house	S	Dim interior	
33			" "	"	"	
34			W elevation (s end) of cow house	WNW	"	
35			" "	"	"	
36			" "	"	"	
37						
38						
39						
40						

DIR = the direction in which the camera is pointed, expressed as a compass poiint eg NW

PROJECT NAME: Intake Farm			PROJECT CODE: L9345		SITE CODE:	
FILM NO: Digital			FILM TYPE: Digital		ISO:	
FRAME Digi JPG No	DATE	SITE	DESCRIPTION	DIR	CONDITONS & Scale Bar Size	PHOTO- GRAPHER
1114	18/02/2004		Fire place in lounge	NE	0.5m	
1115	"		Close up of main door timber	SW	0.5m	
1116	"		Main door general	SW	0.5m	
1117	"		Dining room fireplace	"	0.5m	
1118	"		Beam in dining room	?	0.5m	
1119	"		Detail of mortice in dining room	SE	0.5m	
1120	"		Kitchen window & beam	NW	0.5m	
1121			Kitchen window & beam		Flash - 0.5m	
1122			Kitchen fireplace	SE	0.5m	
1123			Cruck in E face of staircase	NE	0.5m	
1124			" "	"	"	
1125			view down to mullioned window	"	"	
1126			Cruck exposed in bathroom	"	"	
1127			Exposed truss in E bedroom	SE	"	
1128			Timber marks on E truss	SW	"	
1129			" "	"	"	
1130			Truss in W bedroom	"	"	
1131			Marks on truss, W bedroom	SE	"	
1132			" "	"	"	
1133			" "	"	"	
1134			" "	"	"	
1135			Roofspace of Shippon	NW		
1136			" "	?		
1137			" "	N		
1138			" "	?		
1139	19/02/2004		S end of W elevation	SE	2m	
1140	"		Roofscar close up + buttress N end of elevation	E	"	

DIR = the direction in which the camera is pointed, expressed as a compass poiint eg NW

PROJECT NAME: Intake Farm				PROJECT CODE: L9345		SITE CODE:
FILM NO: Digital			FILM TYPE: Digital		ISO:	
FRAME Digi JPG No	DATE	SITE	DESCRIPTION	DIR	CONDITONS & Scale Bar Size	PHOTO- GRAPHER
1141	19/02/2004		S end of W elevation	E	2m	
1141	"		N elevation	"	"	
1143	"		E end of barn, external	?	"	
1144	"		South gable	NW	"	
1145	"		South gable (oblique)	W	"	
1146	"		Stalling in barn W of main barn	SE	"	
1147	"		Stalling in west barn	NW	"	
1148	"		Roofspace of Shippon		"	
1150	"		Close up of beams Shippon		"	
1151	"		Roofspace of Shippon		"	
1152	"		" "		"	
1154	"		W elevation of Shippon	N	2m	
1155	20/02/2004		Milking Parlour??	"	"	
1156	"		Central S elevation	"	"	
1157	"		E end of S elevation	"	"	
1158	"		Working shot (rectified)	"		
1159	"		W end of S elev, lower	"	"	
1160	"		W end of S elev, upper	"	"	
1161	"		E end of N elev, lower	S	"	
1162	"		E end of N elev, lower	"	"	
1163	"		" "	"	"	
1164	"		Back of farmhouse	S	2m	
1165	"		" "	"	"	
1166	"		" "	"	"	
1167	"		N elev rectified, E central lower	S	"	
1168	"		N elev rectified, E central lower	"	"	
1169	"		N elev rectified, W end lower	"	"	

DIR = the direction in which the camera is pointed, expressed as a compass point eg NW

PROJECT NAME: Inake Farm			PROJECT CODE: L9345		SITE CODE:	
FILM NO: Digital			FILM TYPE: Digital		ISO:	
FRAME Digi JPG No	DATE	SITE	DESCRIPTION	DIR	CONDITONS & Scale Bar Size	PHOTO- GRAPHER
1171	20/02/2004		N elev rectified, W end lower	S	2m	
1172	"		W end of N elev, bidg attached to barn	"	"	
1173	"		N elev, upper, east end of barn	S	"	
1174	"		N elev, upper, West end of barn	S	"	
1175	"		E most arch, upper	"	" Flash	
1177	"		E most arch, lower	"	2m	
1178	"		Second arch from E	"	"	
1179	"		Porch area arch & door	"	"	
1180	"		E most arch in cow house	"	"	
1181	"		W most arch in cow house	S		
1183	23/02/2004		E most arch in cow house lower	"	2m	
1184	"		W most arch in cow house lower	"	"	
1185	"		General shot of cow house	"	"	
1186	"		Column in cow house	W	"	
1187	"		General cow house & column	N	"	
1188	"		General cow house & column	E	"	
1189	"		General cow house & column upper	S	"	
1190	"		General cow house & column + arches & timbers	"	"	
1191	"		N part of cow house, upper	W		
1192	"		N part of cow house, lower	"		
1193	"		Close up of column	S		
1194	"		Close up of column & arches	"		
1196	"		Close up of joists	W	2m	
1197	"		Detail of stone working marks on column	E		
1198	"		" "	"		
1199	"		View into cow house from porch	SW	2m	
1200	"		View into porch from cow house	SE	"	

DIR = the direction in which the camera is pointed, expressed as a compass poiint eg NW

PROJECT NAME: Intake Farm			PROJECT CODE: L9345		SITE CODE:	
FILM NO: Digital		FILM TYPE: Digital			ISO:	
FRAME Digi JPG No	DATE	SITE	DESCRIPTION	DIR	CONDITONS & Scale Bar Size	PHOTO- GRAPHER
1201	23/02/2004		View into porch from cow house	SE	2m	
1202	"		Hole in wall between cow house & porch	E		
1203	"		cow house & porch Upper	"		
1204	"		Joists & timers above porch	SE	2m	
1205	"		Milking parlour from SE	NW	"	
1206	"		Milking parlour from SW	NE	"	
1207	"		Milking parlour & roof	"	"	
1208	"		Roofspace above milking parlour		"	
1209	"		" "		"	
1210	"		Roofspace above milking parlour & arcade buttress	NE	"	
1212	"		E external elec of Shippon N	"	2m	
1213	"		E external elec of Shippon N	N	"	
1215	"		W elev of milking parlour & shippon & buttresses	SE	"	
1216	"		General shot of barns	NE	"	
1217	"		Genreal view of Bldgs	N		
1218	23/02/2004		Genreal view of Bldgs	N		
1219			Close up of joist in cow house?	S	0.5m	
1220			" "	"	" Bright	
1221			" "	?	" Flash	
1222			Window in W elev of cow house, above milking parlour	NW		
1223			Joist between W arch & W elev	NW		
1224			Roofspace of arcade	SE		
1225			view through hole between cow house & Close up of roof timbers above arcade	SE	2m	
1226				?	"	
1227			Threshing?	?	"	
1228			" "	?	"	
1229			Joist inserted into arcade column	SW	"	

DIR = the direction in which the camera is pointed, expressed as a compass poiint eg NW

PROJECT NAME: Intake Farm			PROJECT CODE: L9345		SITE CODE:	
FILM NO: Digital		FILM TYPE: Digital			ISO:	
FRAME Digi JPG No	DATE	SITE	DESCRIPTION	DIR	CONDITONS & Scale Bar Size	PHOTO- GRAPHER
1230	23/02/2004		Joist inserted into arcade column	SE	2m	
1231	"		General roof timbers arcade	?		
1232			" "	?		
1233			Details of joists	?		
1234			Mullioned stair window	N	0.5m	
1235			Close up of trust in W bedroom	SW	"	
1236			Buttress in W of cow house	N	2m	
1237			Close up of fireplace in lounge	NE	0.5m	
1238			Rear of farm bldgs	S		
1239			General shot of bldgs	N		
1240			Mortice of beam in dining room	SE		
1241			S elev of Shippon			
1242						
1243						
1244						
1245						
1246						
1247						
1248						
1249						
1250						
1251						
1252						
1253						
1254						
1255						
1256						

DIR = the direction in which the camera is pointed, expressed as a compass poiint eg NW



Film 3: Shot 3



Film 3: Shot 5



Film 3: Shot 7



Film 3: Shot 9



Film 3: Shot 11



Film 3: Shot 13



Film 4: Shot 2



Film 4: Shot 3



Film 4: Shot 5



Film 4: Shot 7



Film 4: Shot 9



Film 4: Shot 12



Film 4: Shot 13



Film 4: Shot 16



Film 4: Shot 17



Film 4: Shot 20



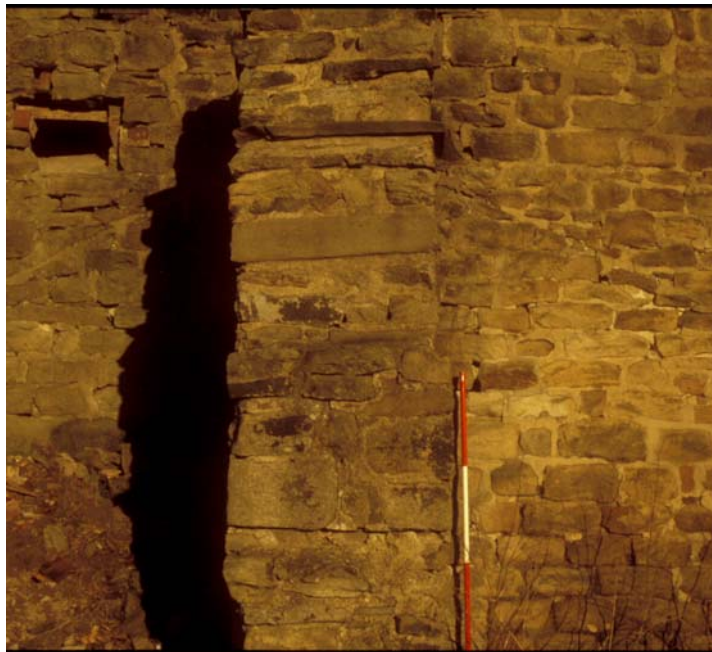
Film 4: Shot 21



Film 4: Shot 24



Film 4: Shot 27



Film 4: Shot 29



Film 4: Shot 33



Film 4: Shot 35



Film 5: Shot 1



Film 5: Shot 4



Film 5: Shot 6



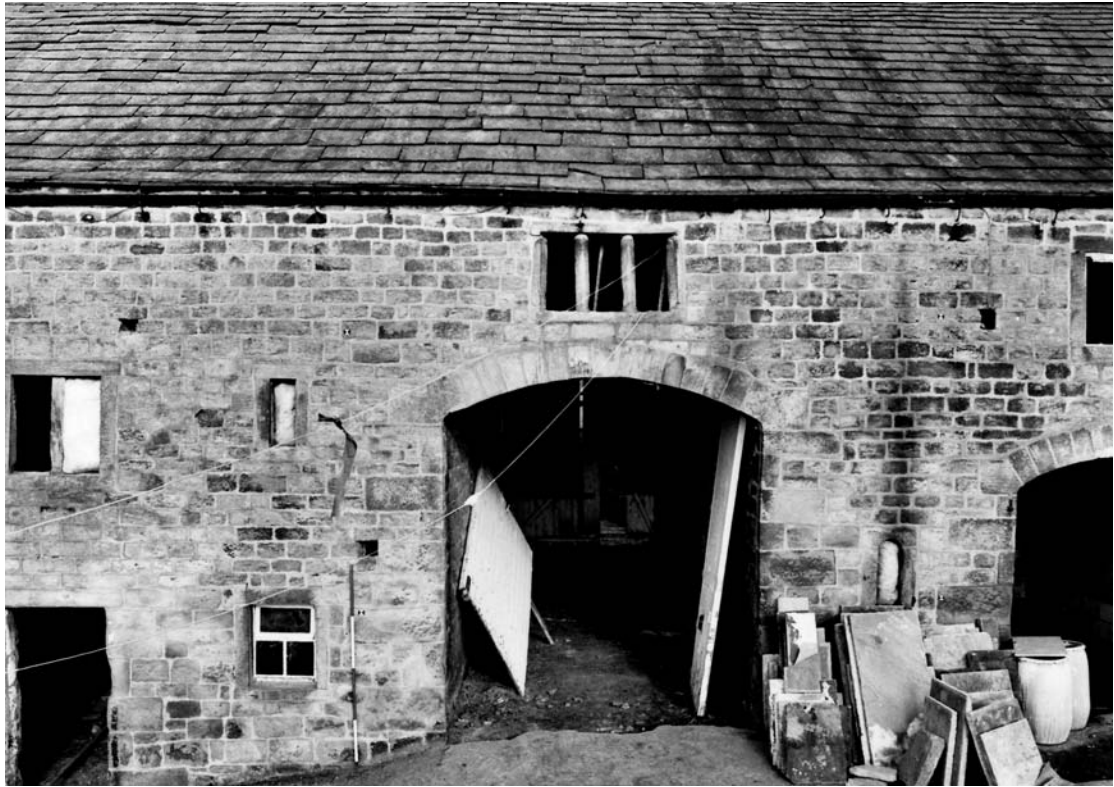
Film 5: Shot 7



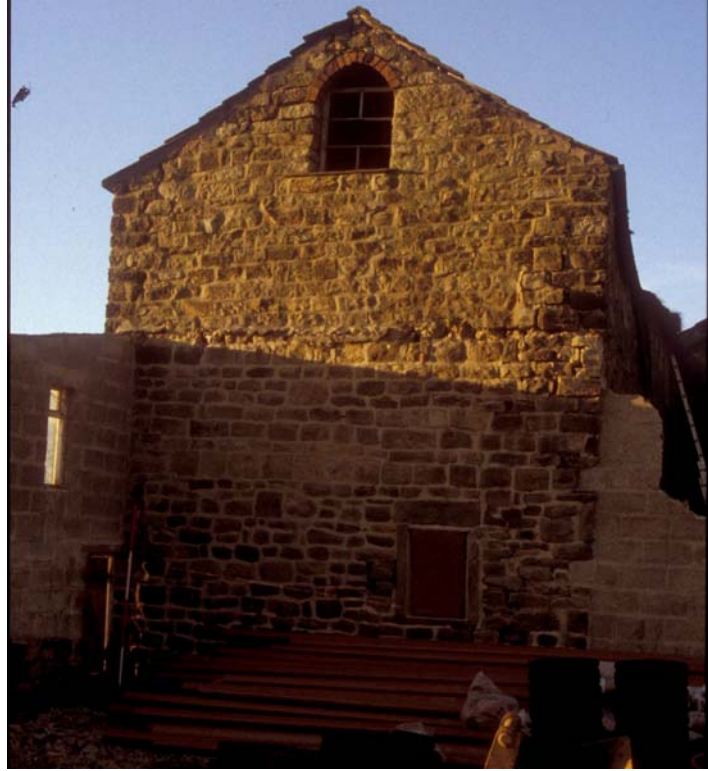
Film 5: Shot 9



Film 5: Shot 11



Film 5: Shot 13



Film 6: Shot 3



Film 6: Shot 5



Film 6: Shot 7



Film 6: Shot 9



Film 6: Shot 11



Film 6: Shot 14



Film 6: Shot 16



Film 6: Shot 19



Film 6: Shot 21



Film 6: Shot 24



Film 6: Shot 26



Film 6: Shot 29



Film 6: Shot 31



Film 6: Shot 34



Film 6: Shot 36



Film 6: Shot 37



Film 8: Shot 3



Film 8: Shot 4



Film 8: Shot 8



Film 8: Shot 12



Film 8: Shot 14



Film 9: Shot 1



Film 9: Shot 4



Film 9: Shot 8



Film 9: Shot 11



Film 9: Shot 13



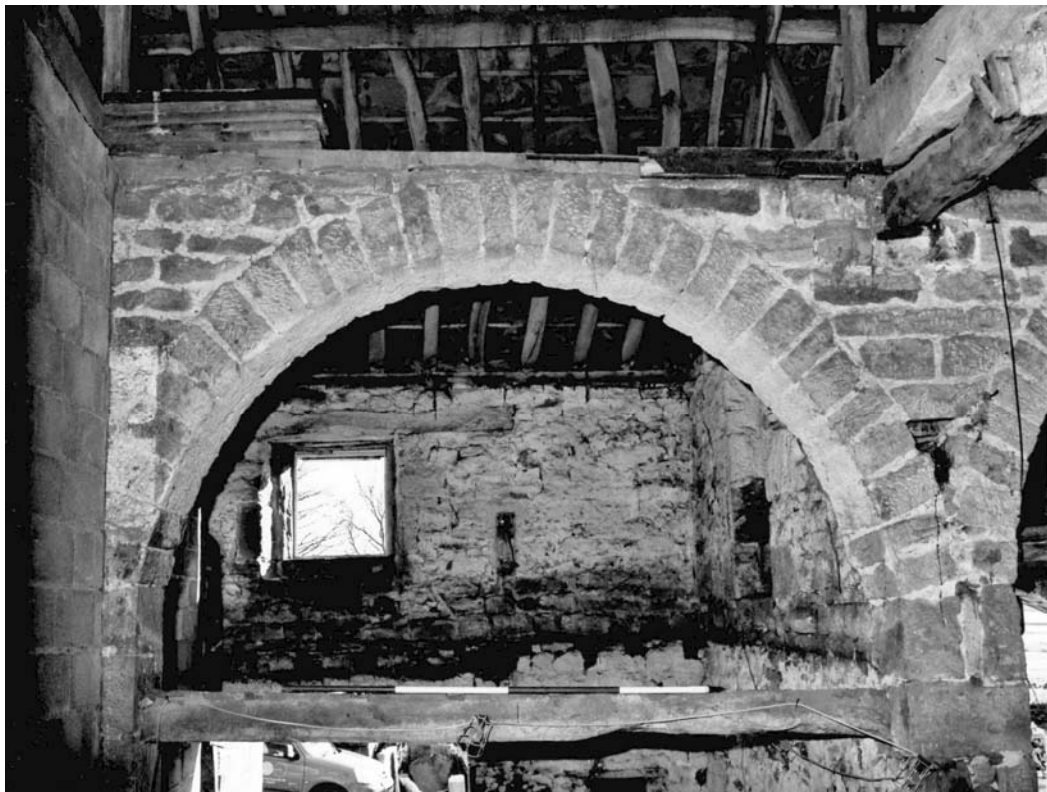
Film 10: Shot 1



Film 10: Shot 5



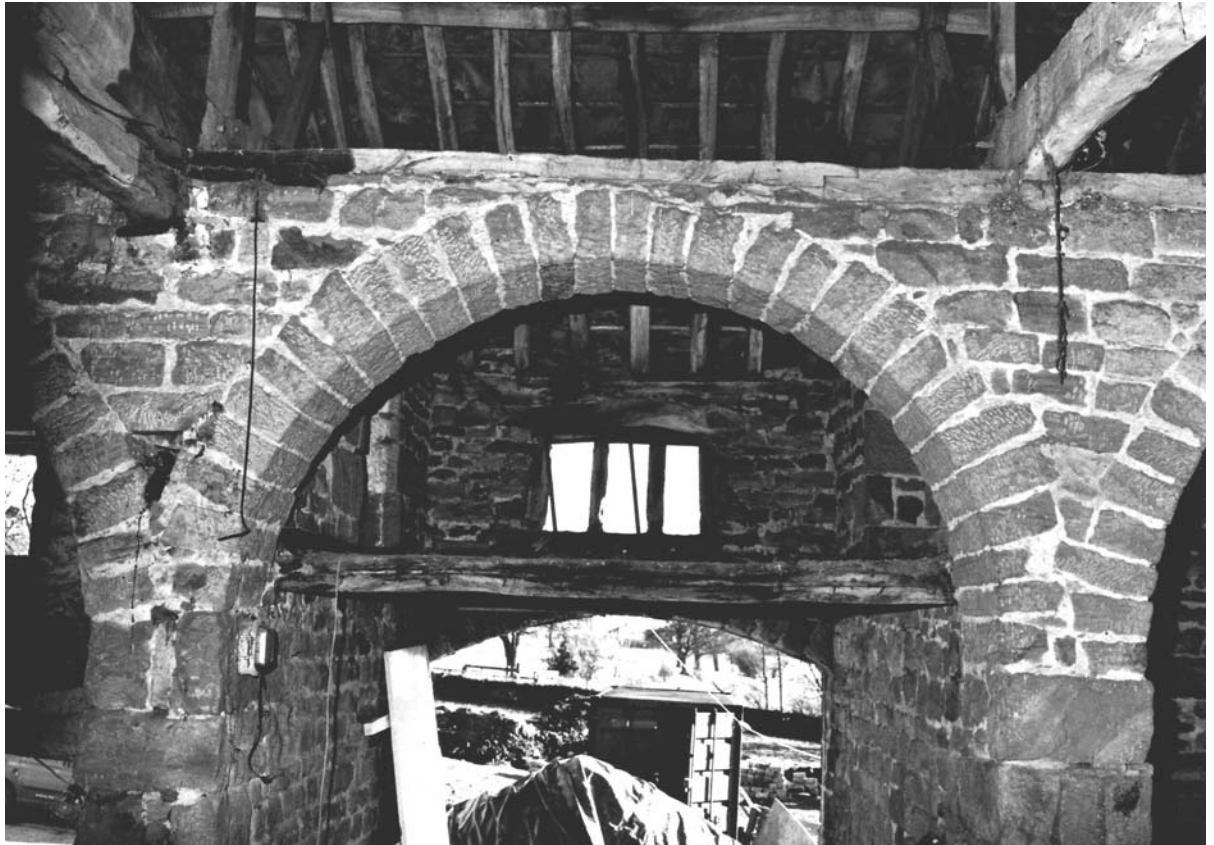
Film 10: Shot 9



Film 10: Shot 12



Film 10: Shot 14



Film 11: Shot 2



Film 11: Shot 5



Film 11: Shot 9



Film 11: Shot 12



Film 11: Shot 15



Film 12: Shot 2



Film 12: Shot 3



Film 12: Shot 5



Film 12: Shot 7



Film 12: Shot 10



Film 12: Shot 12



Film 12: Shot 14



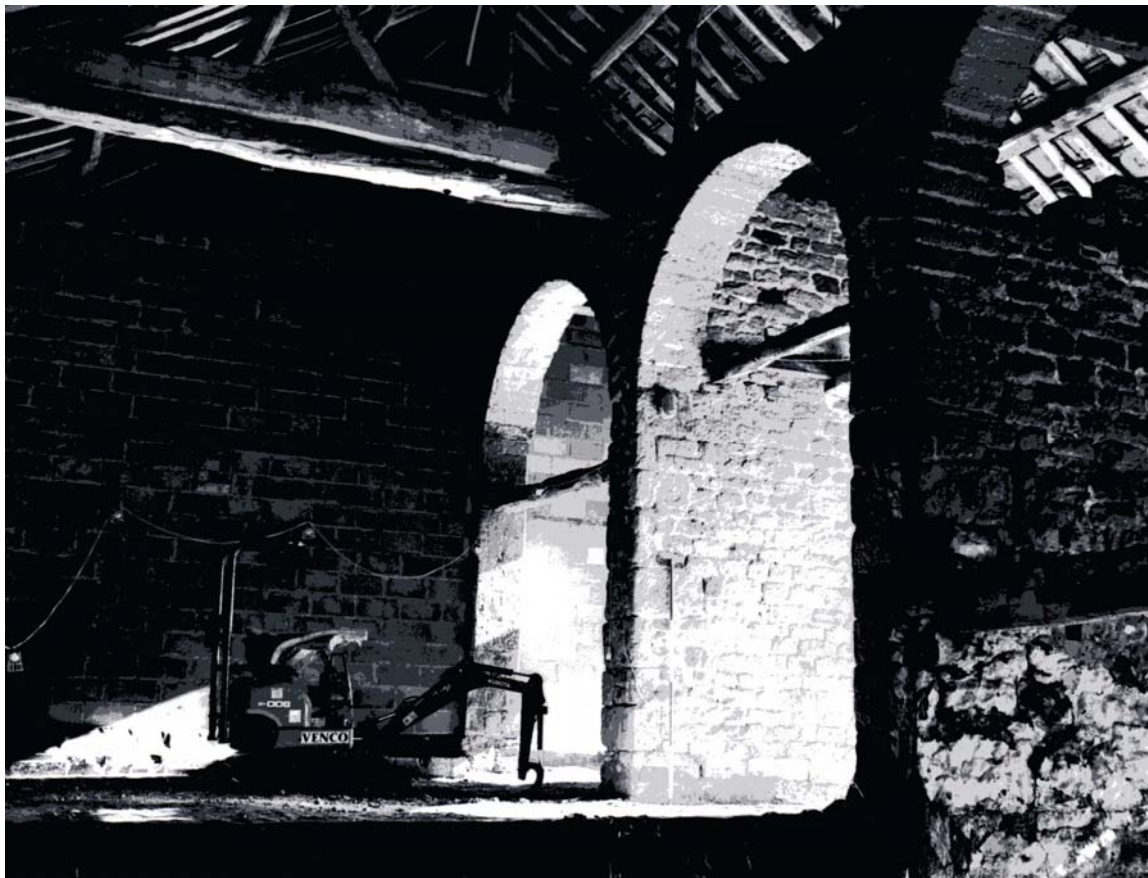
Film 13: Shot 2



Film 13: Shot 4



Film 13: Shot 5



Film 13: Shot 7



Film 13: Shot 10



Film 13: Shot 11



Film 13: Shot 14



Film 14: Shot 1



Film 14: Shot 6



Film 14: Shot 7



Film 14: Shot 11



Film 14: Shot 12



Film 14: Shot 13



Film 14: Shot 14



Film 15: Shot 2



Film 15: Shot 4



Film 15: Shot 5



Film 15: Shot 7



Film 15: Shot 10



Film 15: Shot 11



Film 15: Shot 13



Film 15: Shot 17



Film 15: Shot 20



Film 15: Shot 21



Film 15: Shot 24



Film 15: Shot 28



Film 16: Shot 2



Film 16: Shot 6



Film 16: Shot 8



Film 16: Shot 12



Film 16: Shot 14



Film 17: Shot 2



Film 17: Shot 5



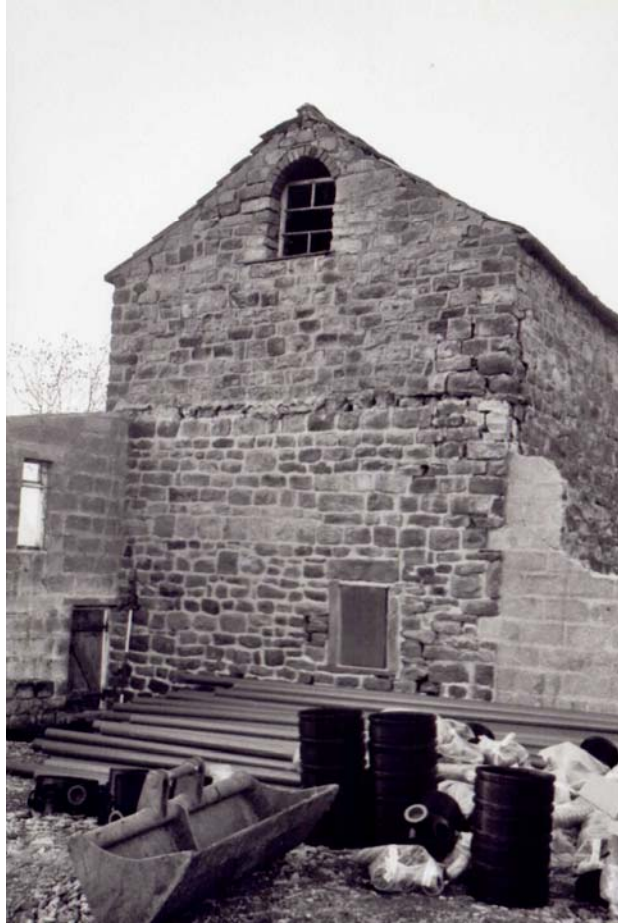
Film 17: Shot 8



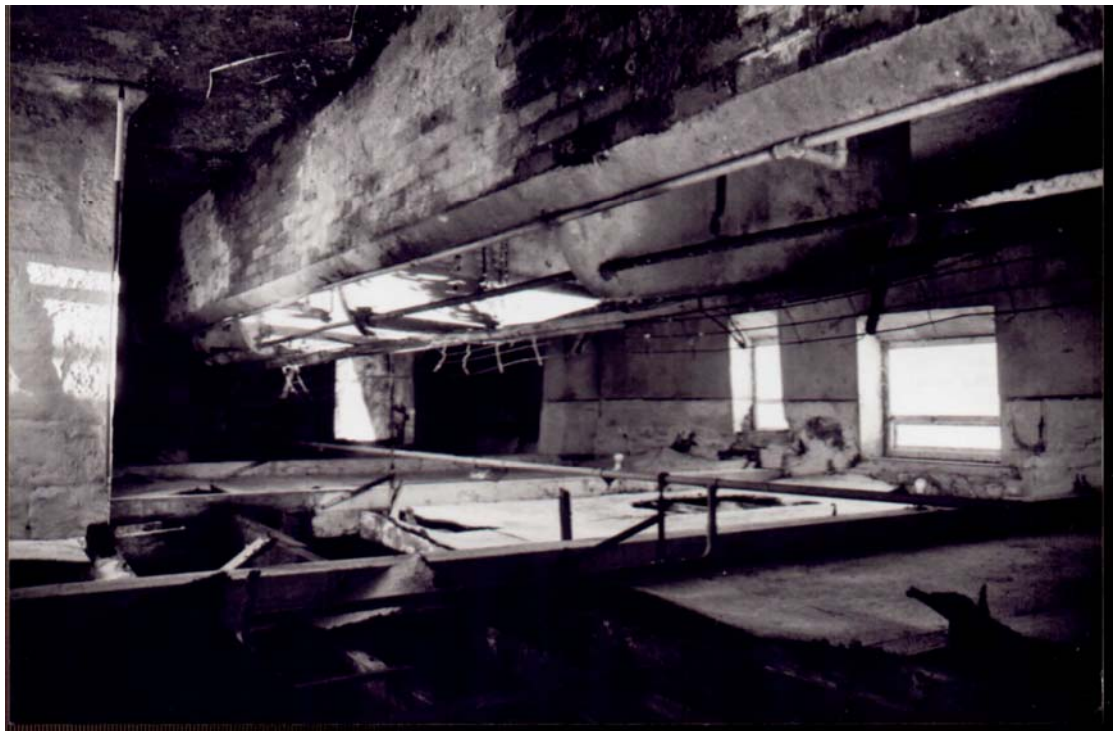
Film 17: Shot 11



Film 17: Shot 14



Film 18: Shot 1



Film 18: Shot 2



Film 18: Shot 5



Film 18: Shot 11



Film 18: Shot 14



Film 18: Shot 17



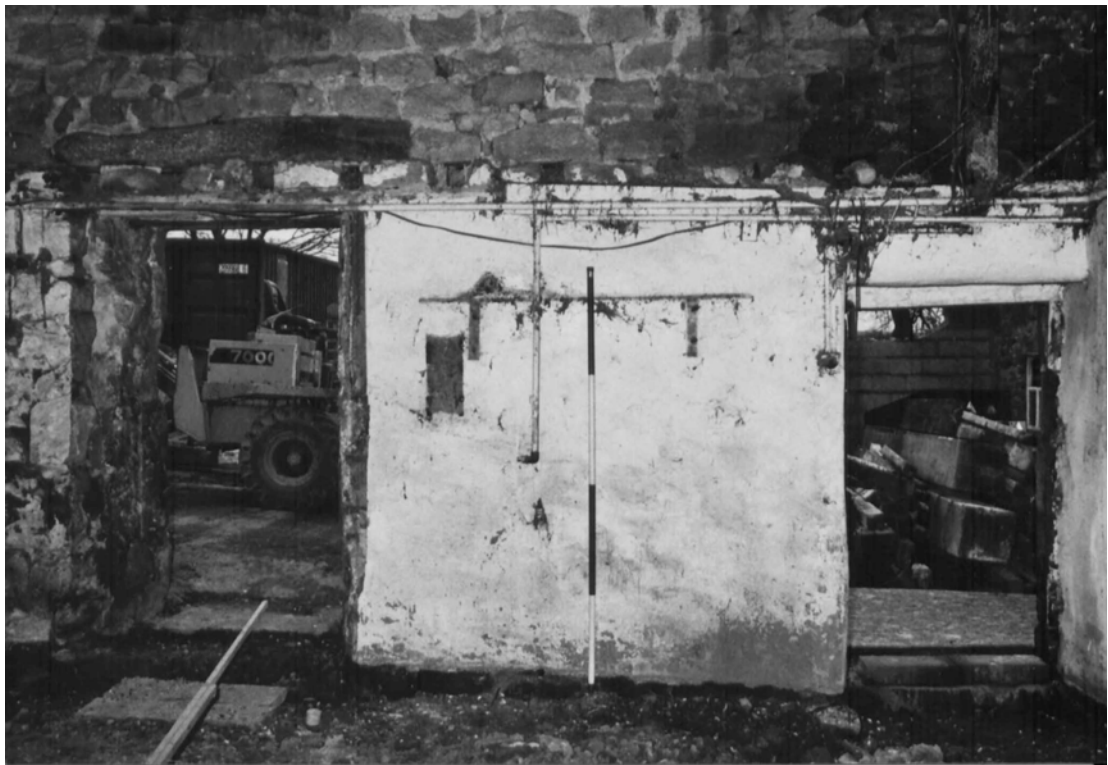
Film 18: Shot 20



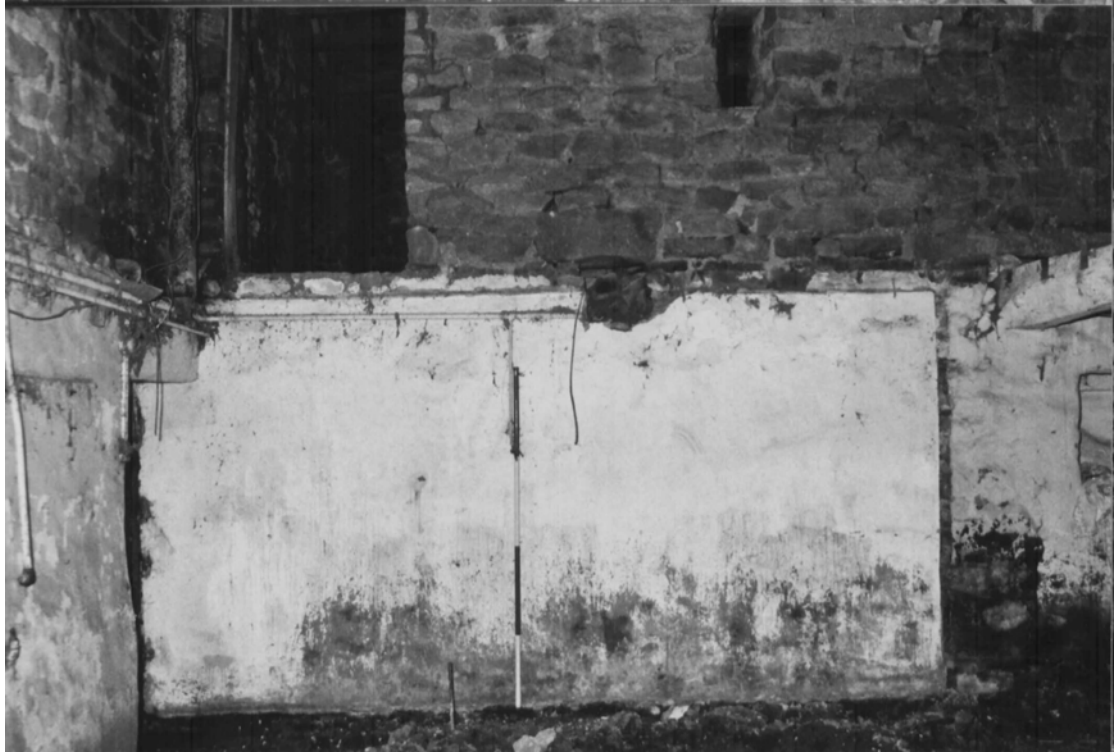
Film 18: Shot 23



Film 18: Shot 30



Film 18: Shot 32



Film 18: Shot 34



Digi JPG No: 1114



Digi JPG No: 1115



Digi JPG No: 1116



Digi JPG No: 1117



Digi JPG No: 1118



Digi JPG No: 1119



Digi JPG No: 1121



Digi JPG No: 1122



Digi JPG No: 1123



Digi JPG No: 1125



Digi JPG No: 1126



Digi JPG No: 1127



Digi JPG No: 1128



Digi JPG No: 1129



Digi JPG No: 1130



Digi JPG No: 1131



Digi JPG No: 1134



Digi JPG No: 1135



Digi JPG No: 1137



Digi JPG No: 1139



Digi JPG No: 1140



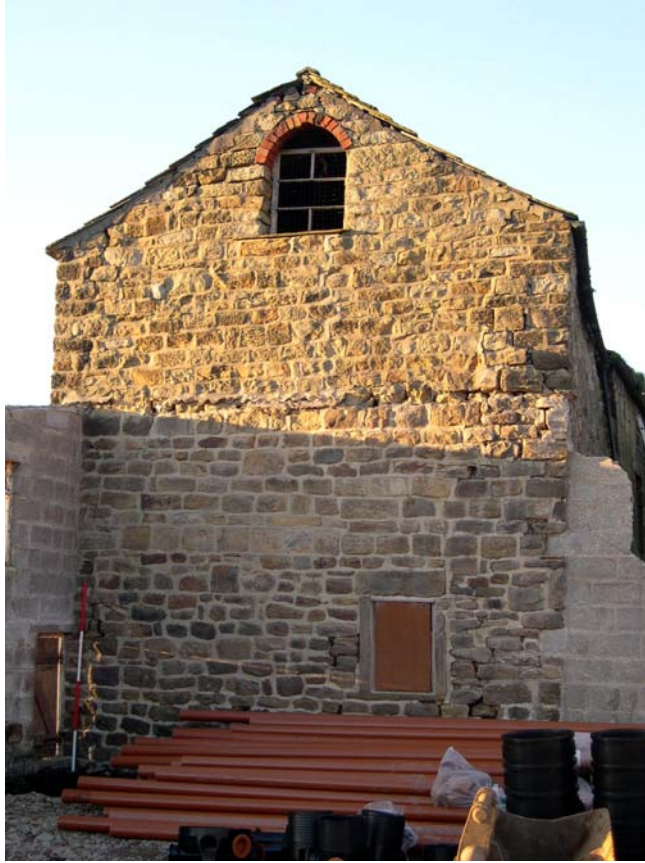
Digi JPG No: 1141



Digi JPG No: 1142



Digi JPG No: 1143



Digi JPG No: 1144



Digi JPG No: 1145



Digi JPG No: 1146



Digi JPG No: 1147



Digi JPG No: 1148



Digi JPG No: 1151



Digi JPG No: 1154



Digi JPG No: 1155



Digi JPG No: 1156



Digi JPG No: 1157



Digi JPG No: 1158



Digi JPG No: 1159



Digi JPG No: 1160



Digi JPG No: 1161



Digi JPG No: 1164



Digi JPG No: 1166



Digi JPG No: 1167



Digi JPG No: 1168



Digi JPG No: 1169



Digi JPG No: 1171



Digi JPG No: 1172



Digi JPG No: 1173



Digi JPG No: 1174



Digi JPG No: 1175



Digi JPG No: 1177



Digi JPG No: 1178



Digi JPG No: 1179



Digi JPG No: 1180



Digi JPG No: 1181



Digi JPG No: 1183



Digi JPG No: 1172



Digi JPG No: 1173



Digi JPG No: 1174



Digi JPG No: 1175



Digi JPG No: 1177



Digi JPG No: 1178



Digi JPG No: 1179



Digi JPG No: 1180



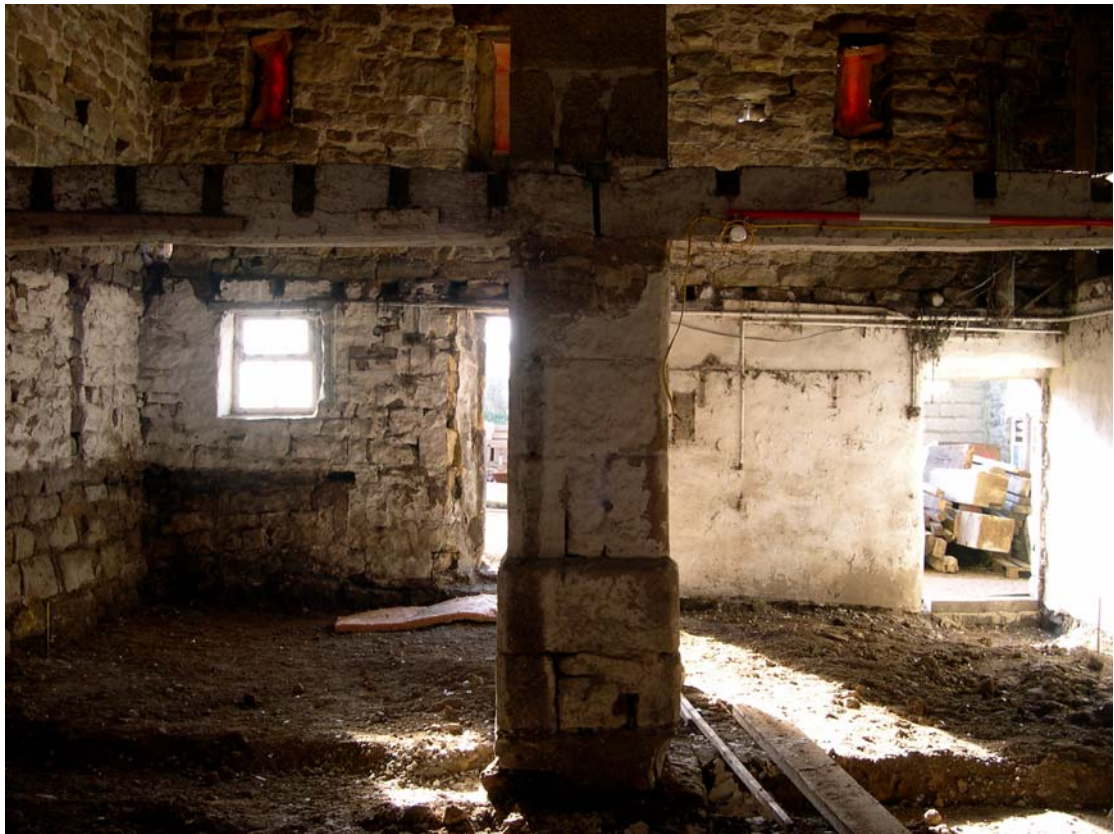
Digi JPG No: 1181



Digi JPG No: 1183



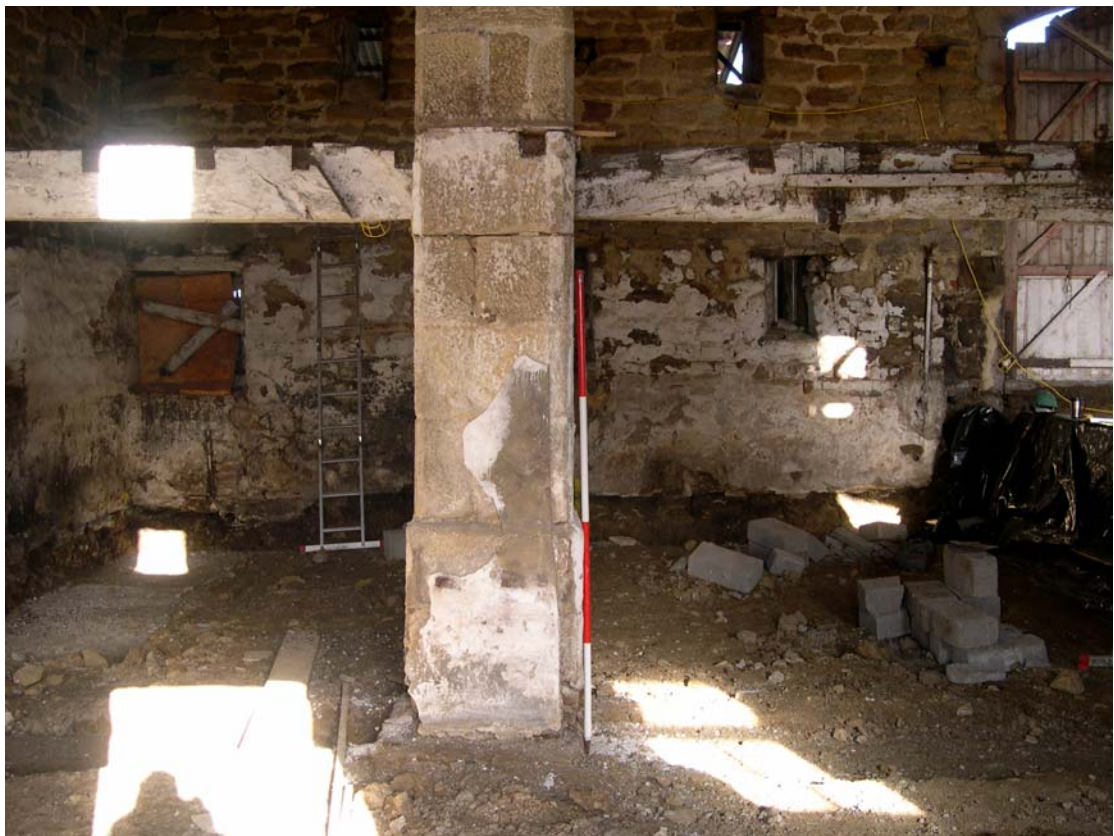
Digi JPG No: 1184



Digi JPG No: 1185



Digi JPG No: 1186



Digi JPG No: 1187



Digi JPG No: 1188



Digi JPG No: 1189



Digi JPG No: 1190



Digi JPG No: 1191



Digi JPG No: 1193



Digi JPG No: 1194



Digi JPG No: 1196



Digi JPG No: 1197



Digi JPG No: 1199



Digi JPG No: 1200



Digi JPG No: 1202



Digi JPG No: 1203



Digi JPG No: 1204



Digi JPG No: 1205



Digi JPG No: 1207



Digi JPG No: 1209



Digi JPG No: 1212



Digi JPG No: 1213



Digi JPG No: 1215



Digi JPG No: 1216



Digi JPG No: 1217



Digi JPG No: 1220



Digi JPG No: 1222



Digi JPG No: 1223



Digi JPG No: 1224



Digi JPG No: 1225



Digi JPG No: 1226



Digi JPG No: 1228



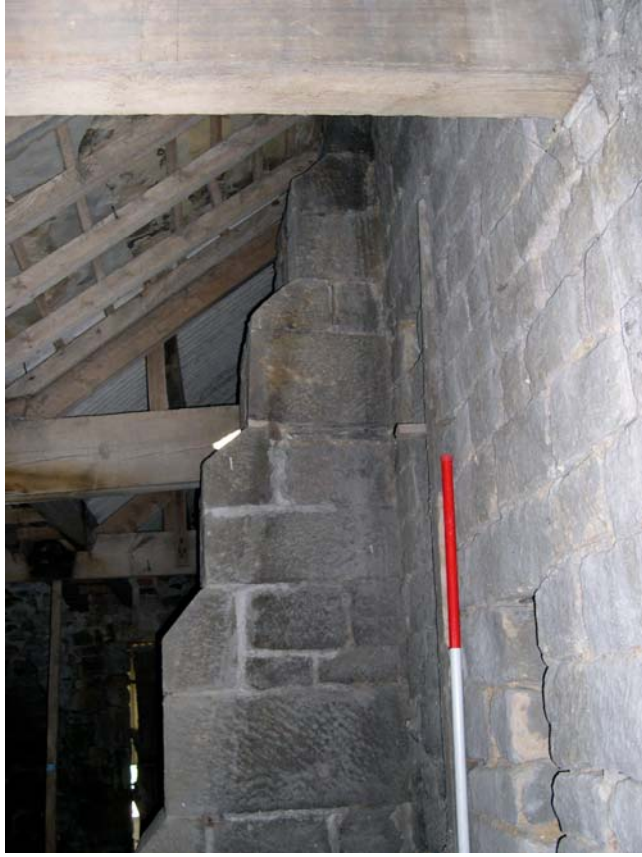
Digi JPG No: 1229



Digi JPG No: 1232



Digi JPG No: 1233



Digi JPG No: 1236



Digi JPG No: 1237



Digi JPG No: 1238



Digi JPG No: 1239



Digi JPG No: 1240