

Castle Hill: LWCHL03

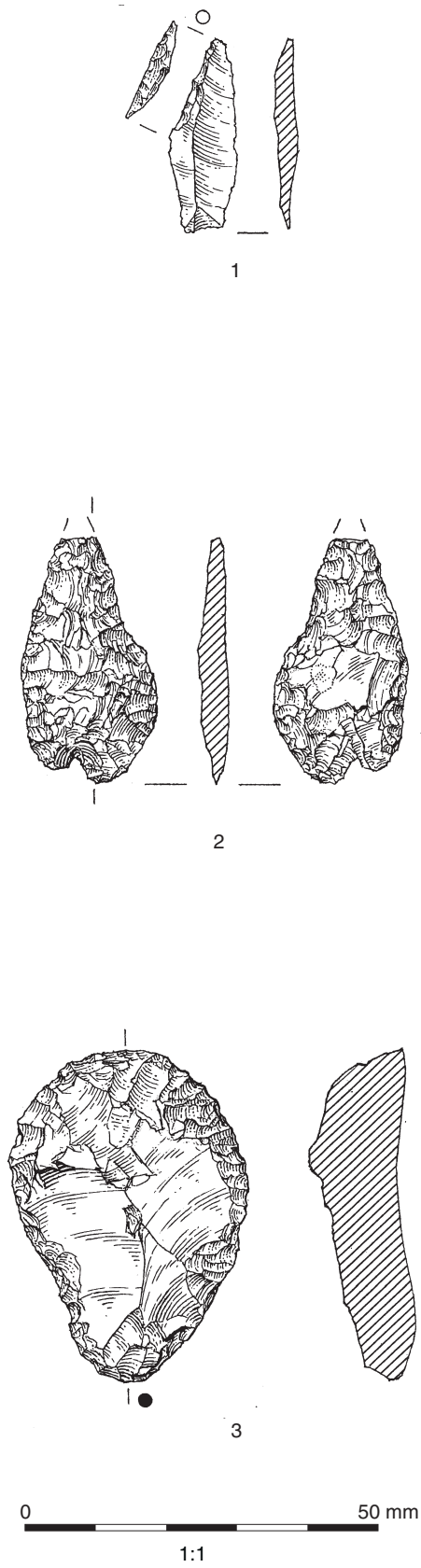


Figure 3.1: 1. Microlith, 2. Leaf-shaped arrowhead, 3. End-and-side scraper

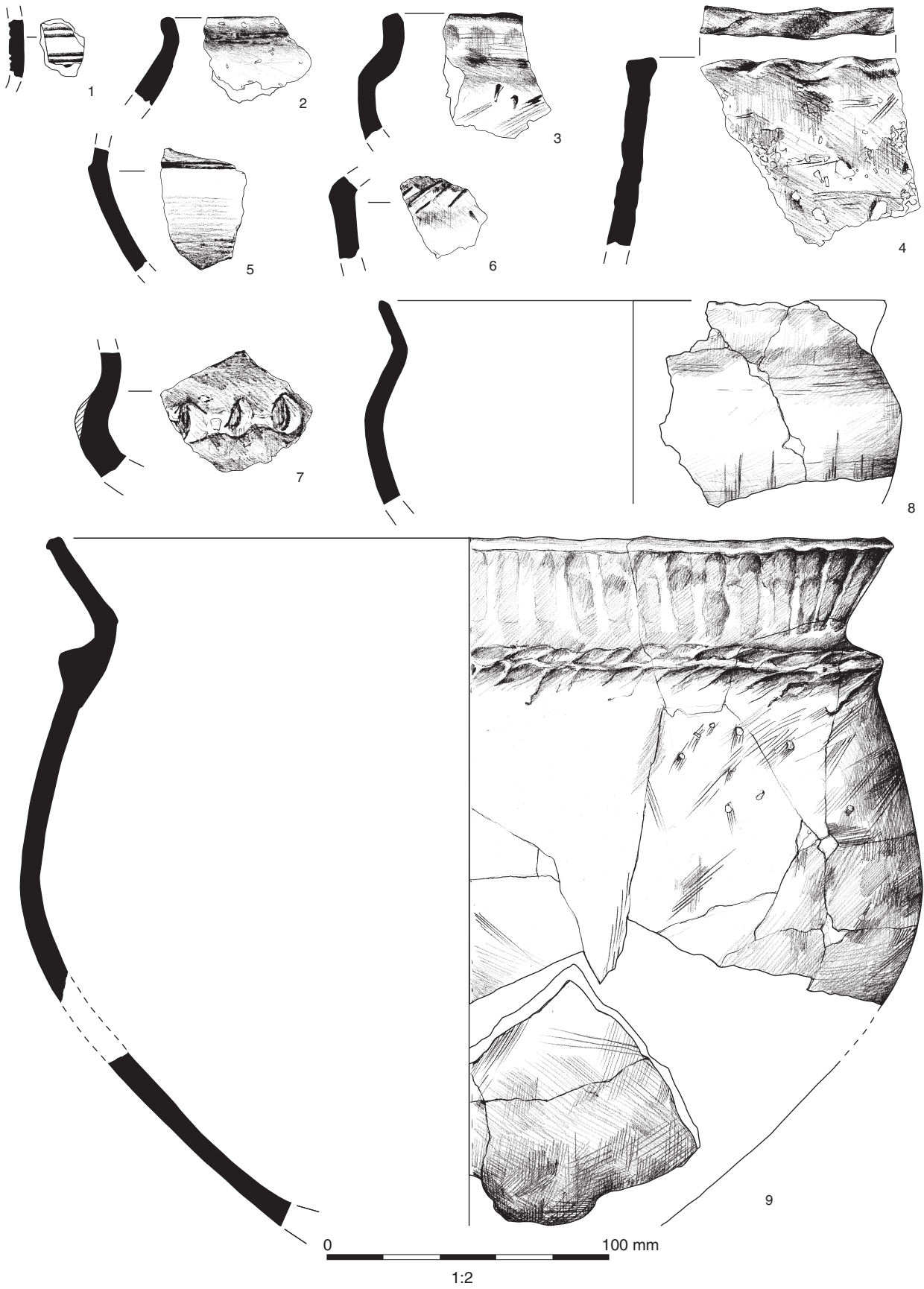


Figure 3.2: Prehistoric pottery: catalogue nos. 1 to 9

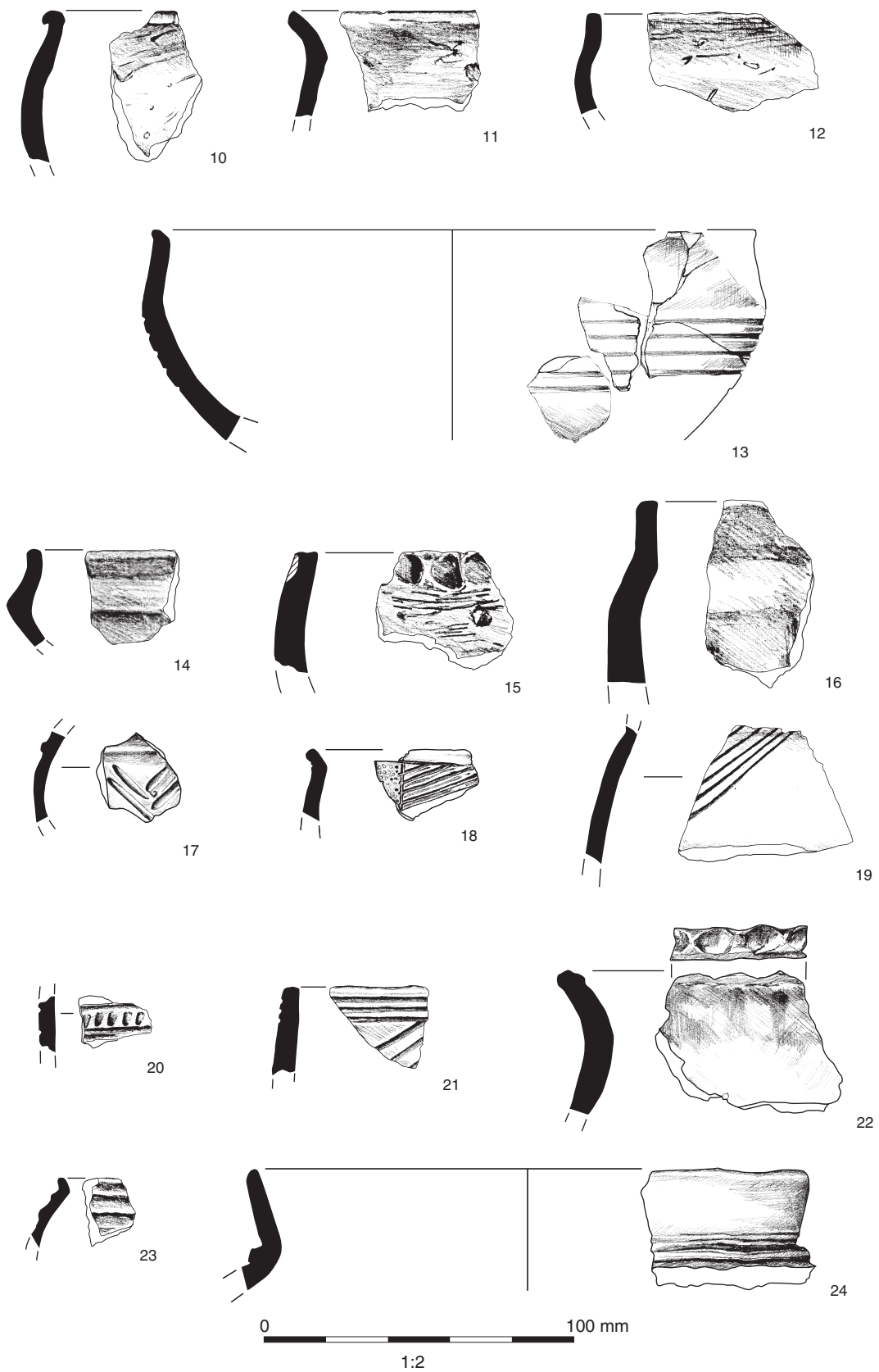


Figure 3.3: Prehistoric pottery: catalogue nos. 10 to 24

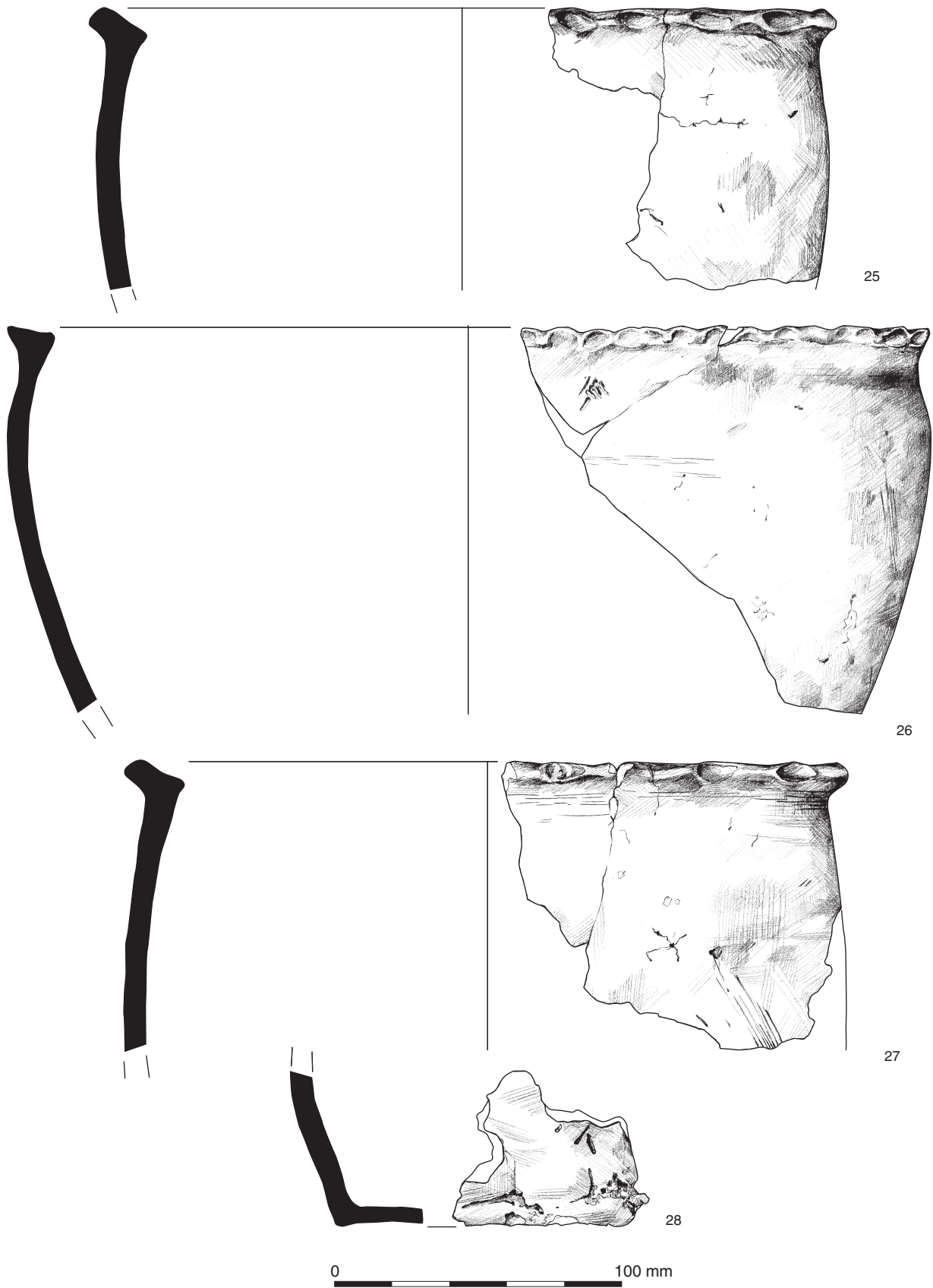


Figure 3.4: Prehistoric pottery: catalogue nos. 25 to 28

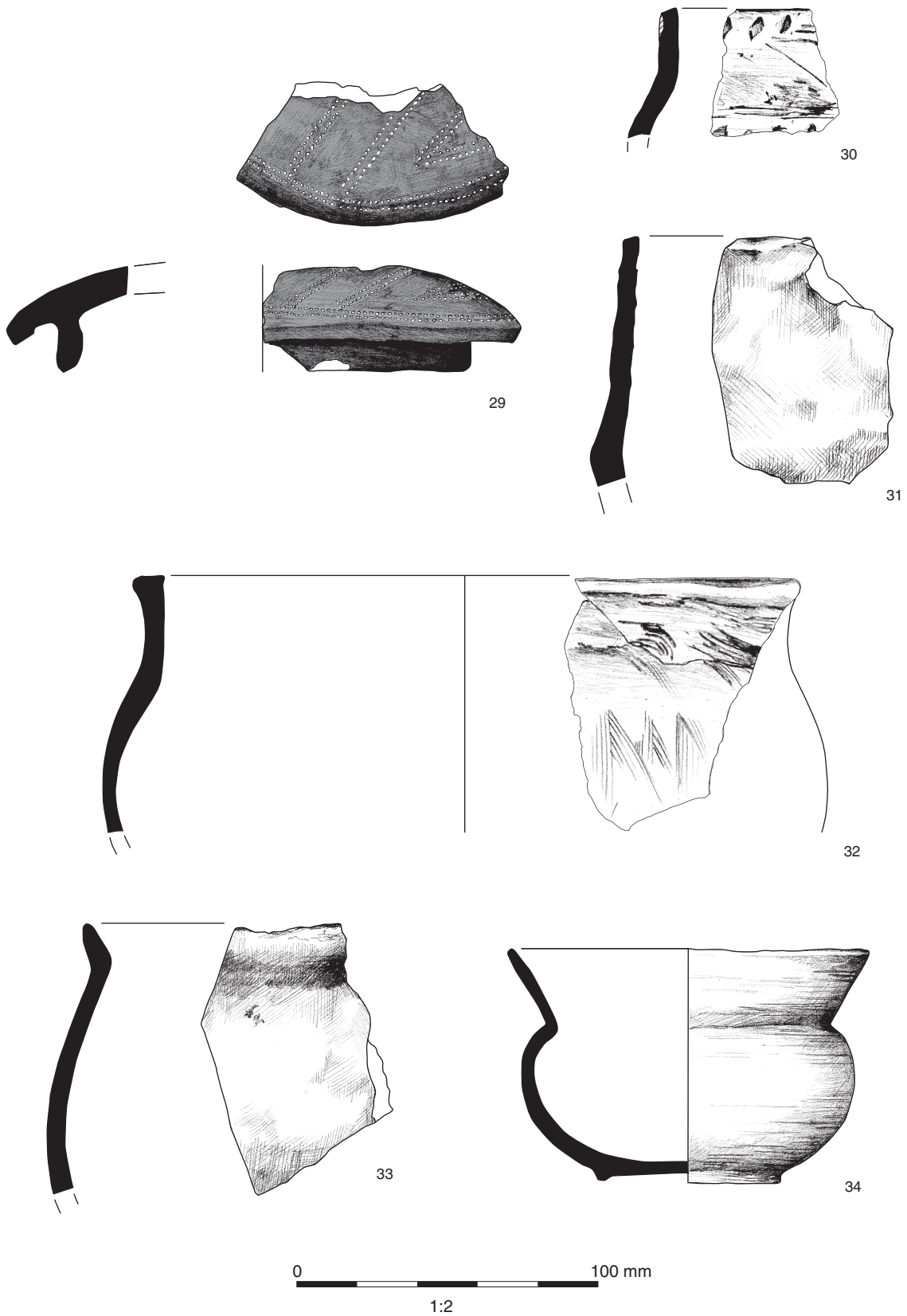
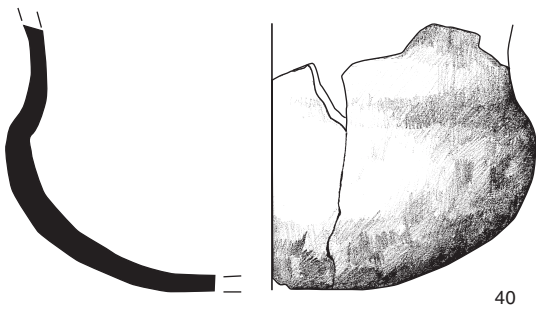
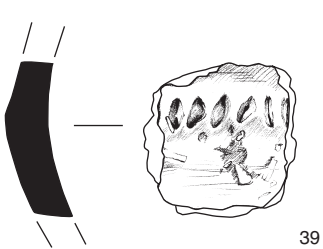
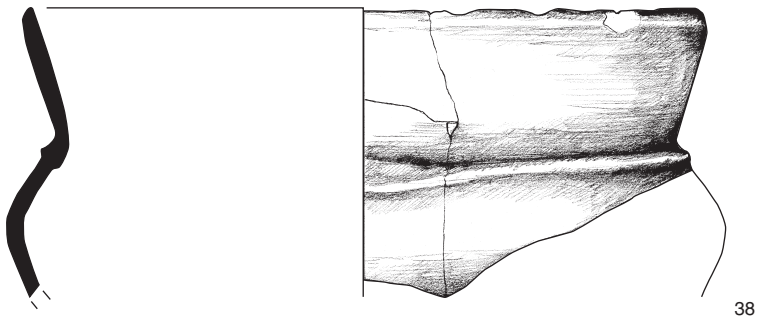
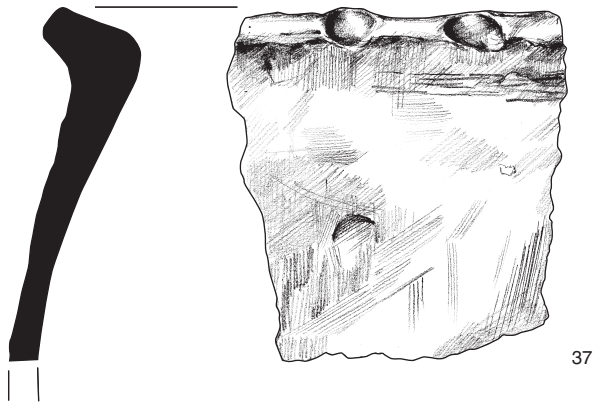
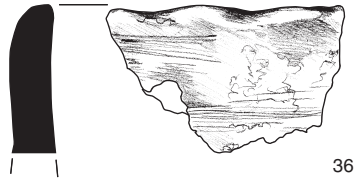


Figure 3.5: Prehistoric pottery: catalogue nos 29 to 34



0 100 mm
1:2

Figure 3.6: Prehistoric pottery: catalogue nos. 35 to 40

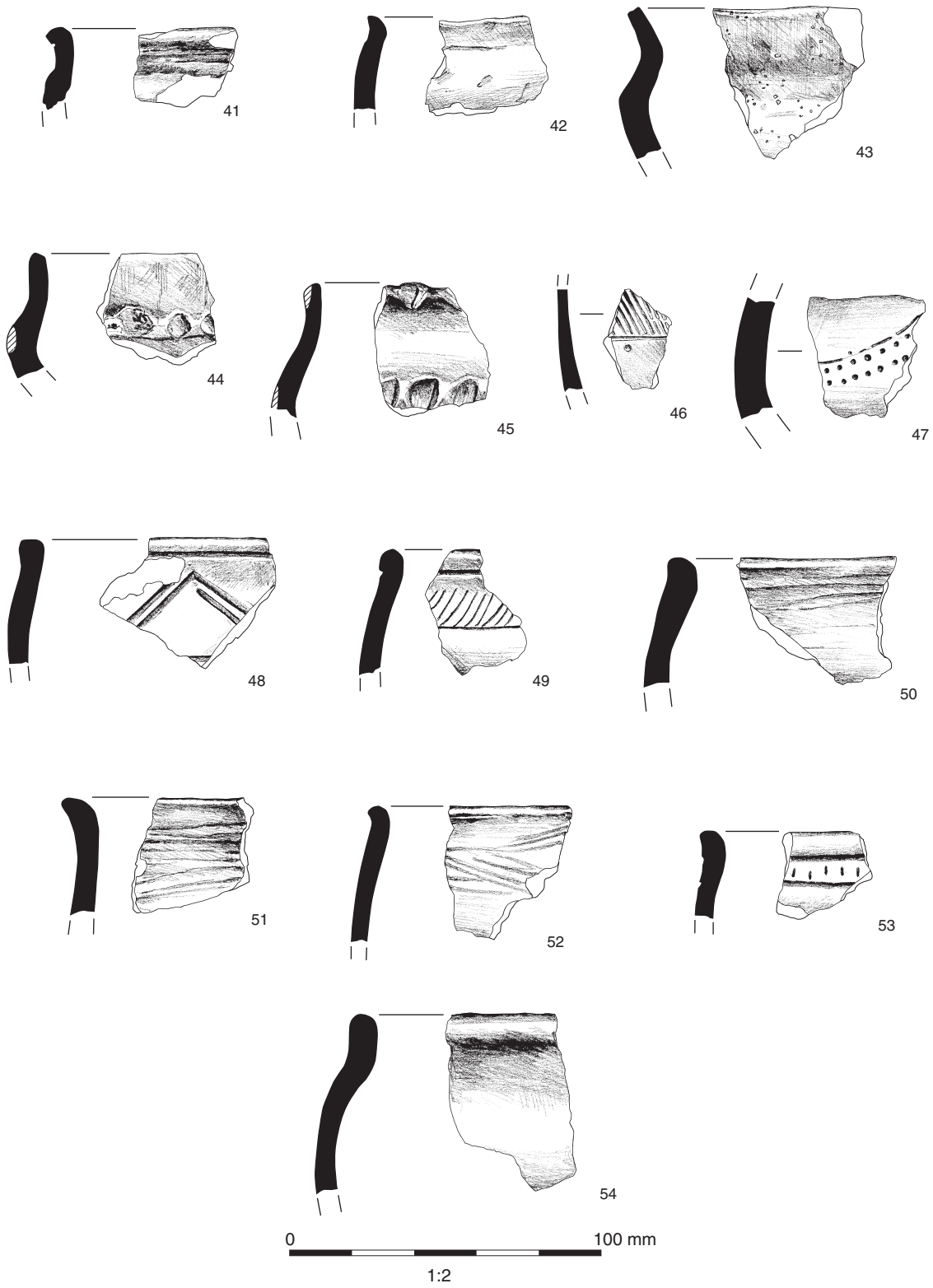


Figure 3.7: Prehistoric pottery: catalogue nos 41 to 54

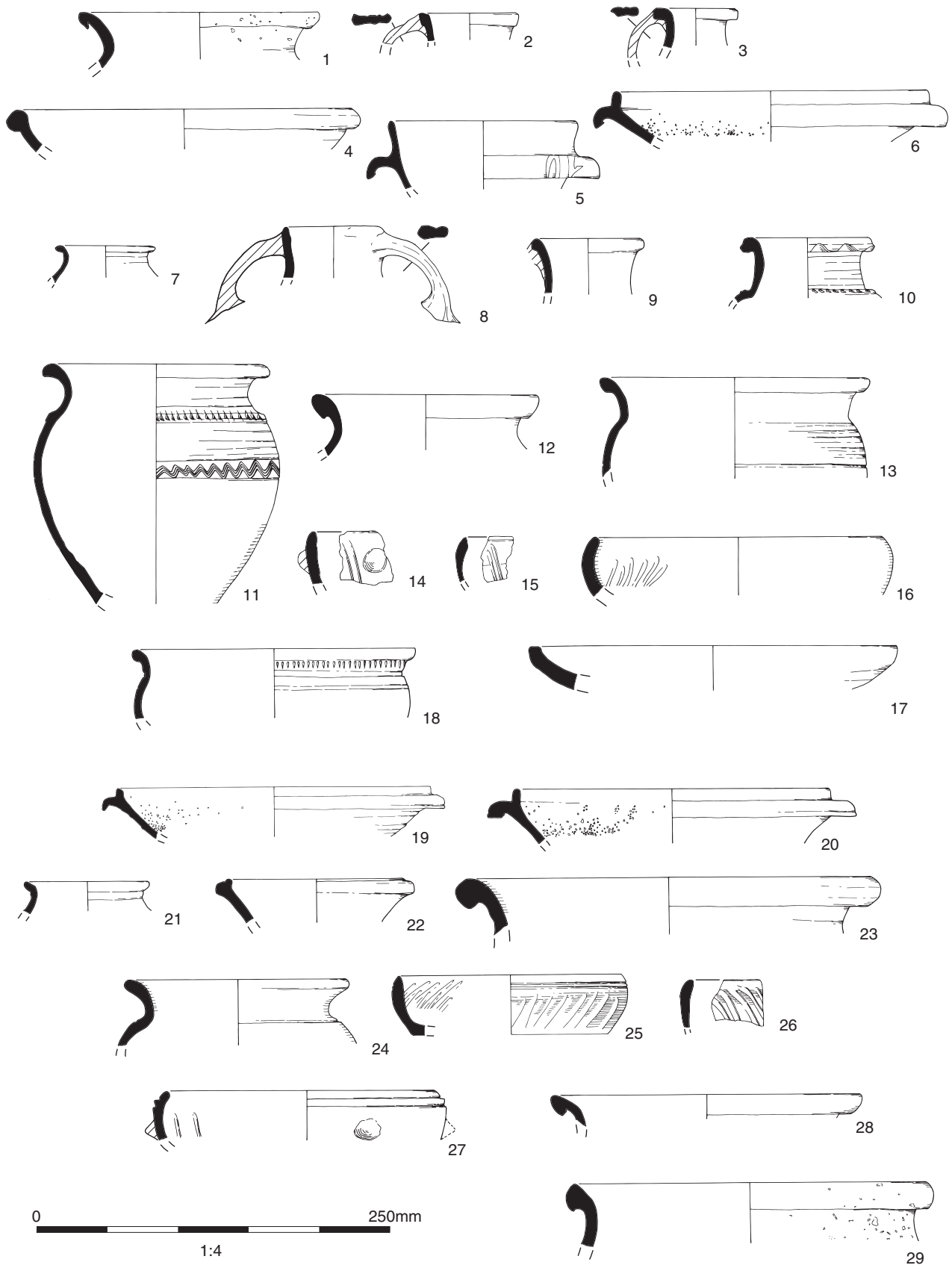
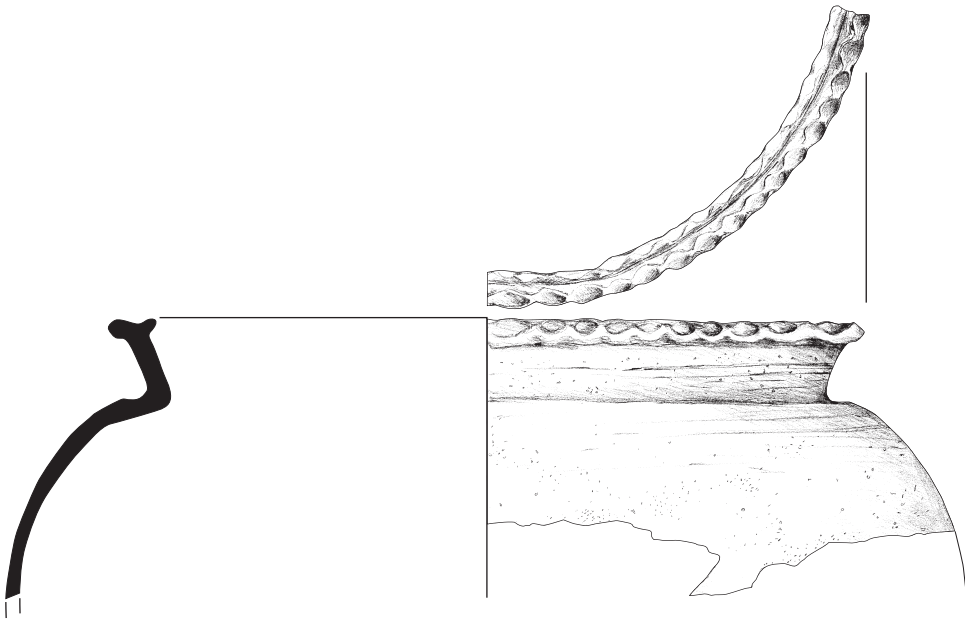
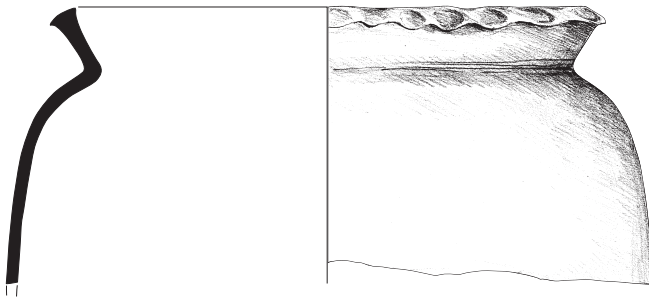


Figure 3.8: Roman pottery



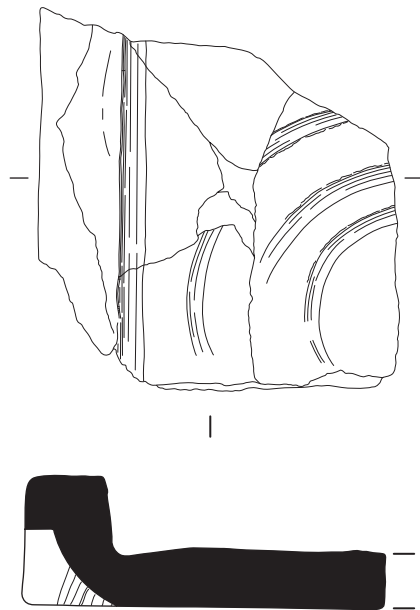
1



2



Figure 3.9: Medieval pottery



0 100 mm
1:3

Figure 3.10: Roman tile

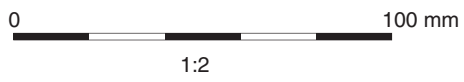
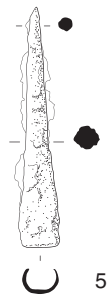
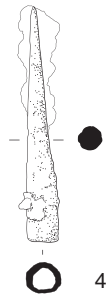
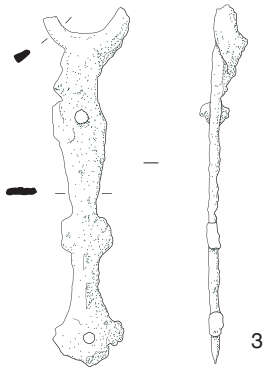
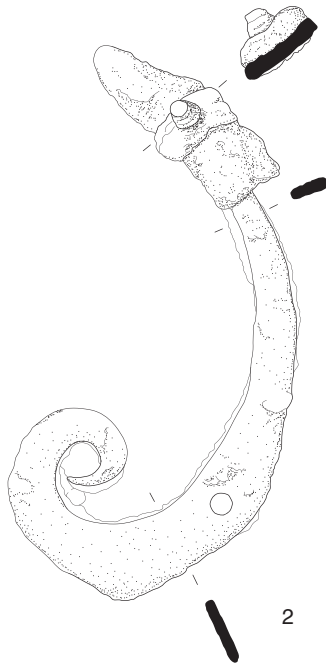
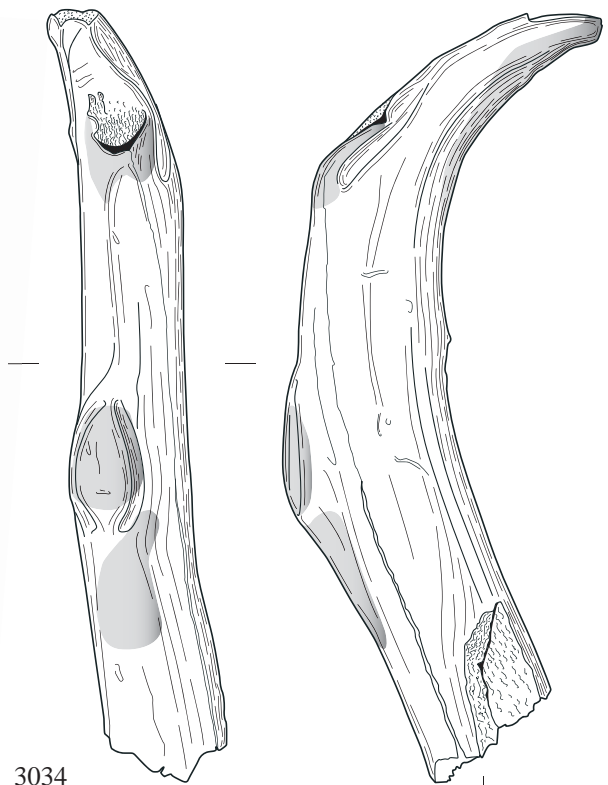
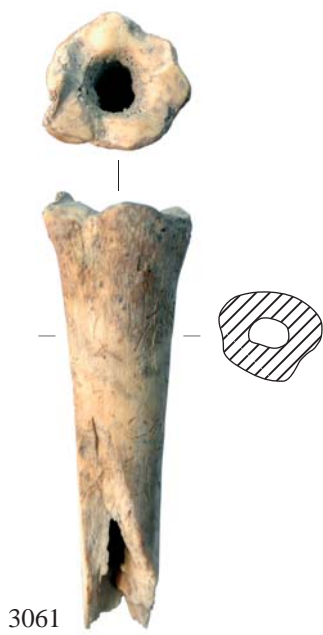


Figure 3.11: Metalwork



Polish

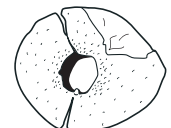
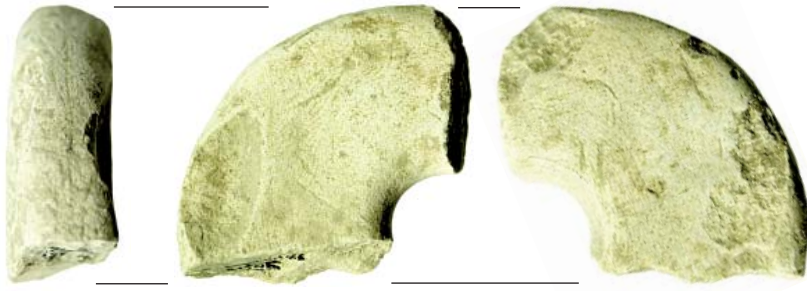


Figure 3.12: Worked bone



1



2

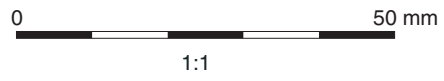


Figure 3.13: Worked stone