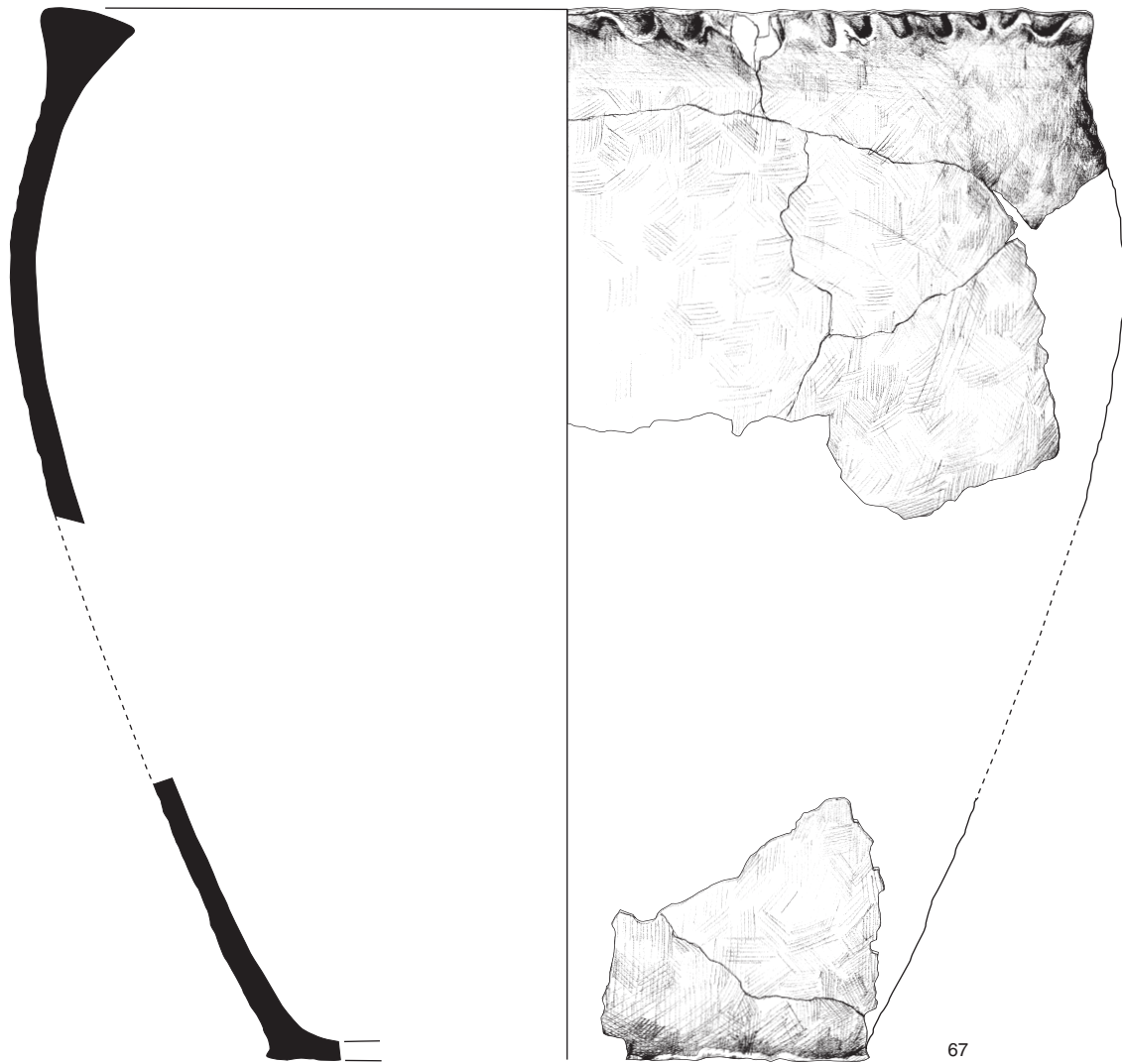
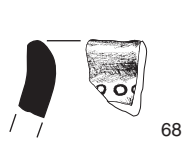


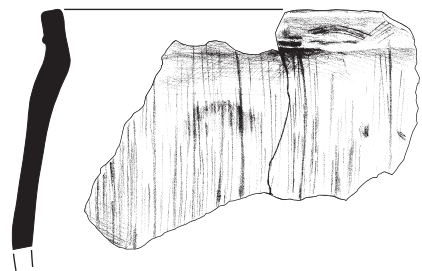
Figure 6.1: Prehistoric pottery: catalogue nos. 55 to 66



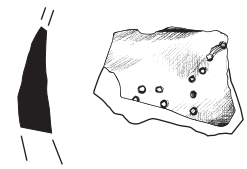
67



68



69



70

0 100 mm
1:2

Figure 6.2: Prehistoric pottery: catalogue nos. 67 to 70

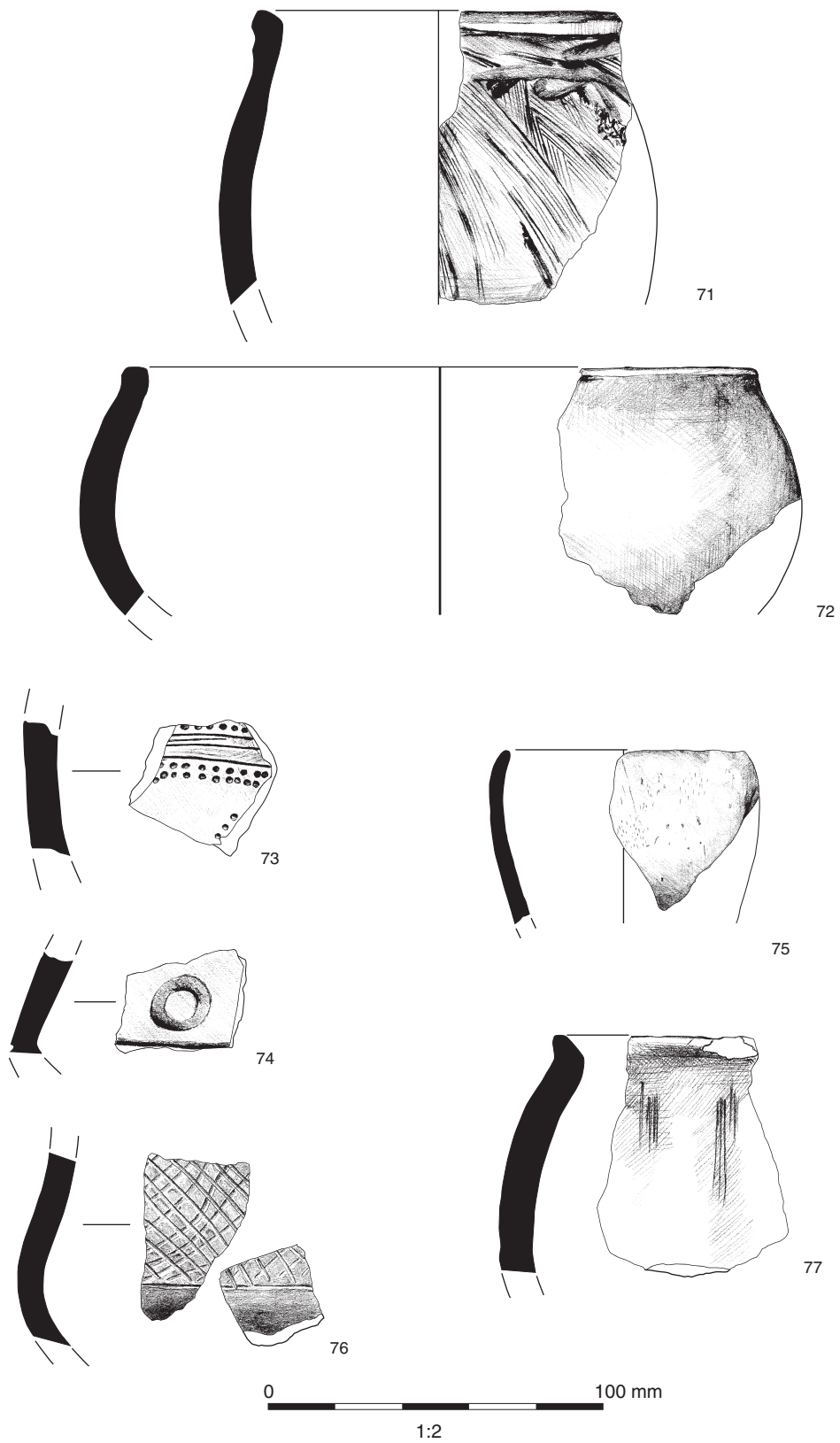
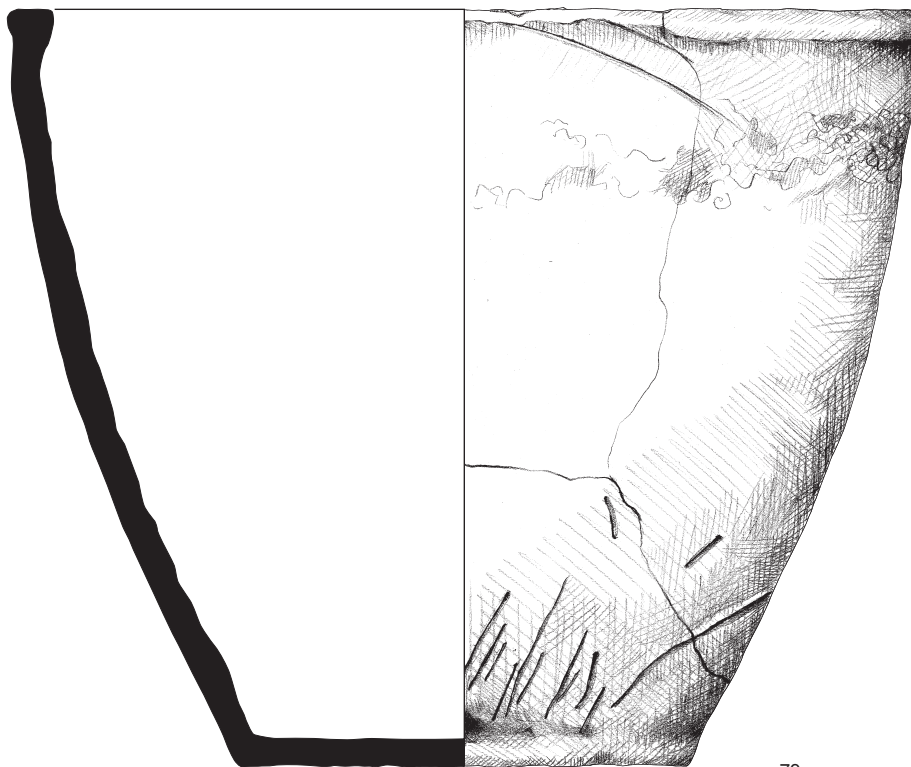
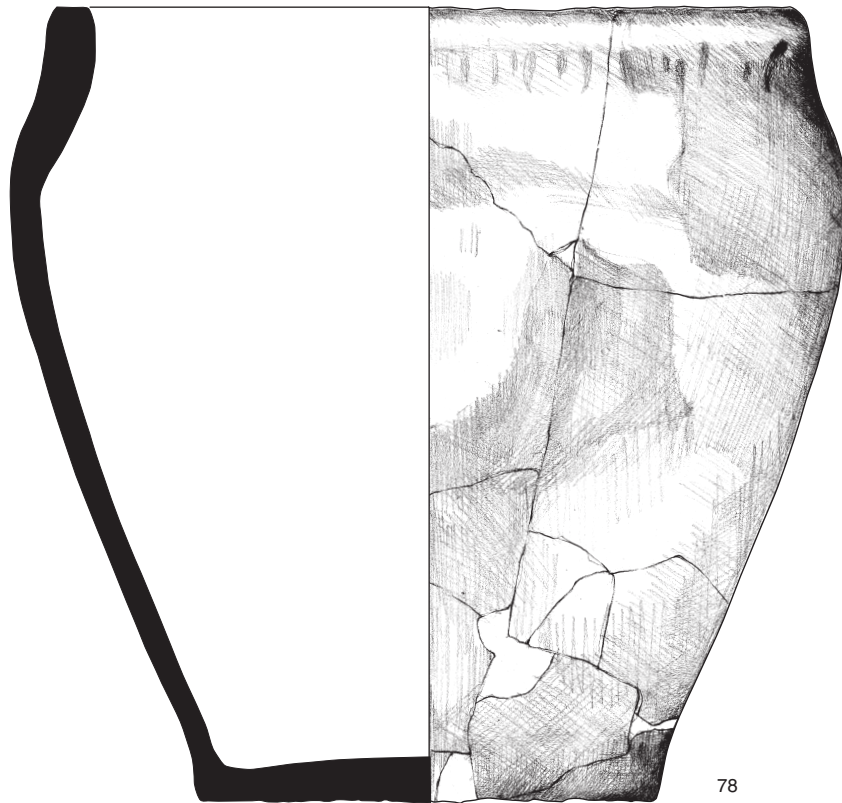


Figure 6.3: Prehistoric pottery: catalogue nos. 71 to 77



0 100 mm

1:2

Figure 6.4: Prehistoric pottery: catalogue nos. 78 to 79

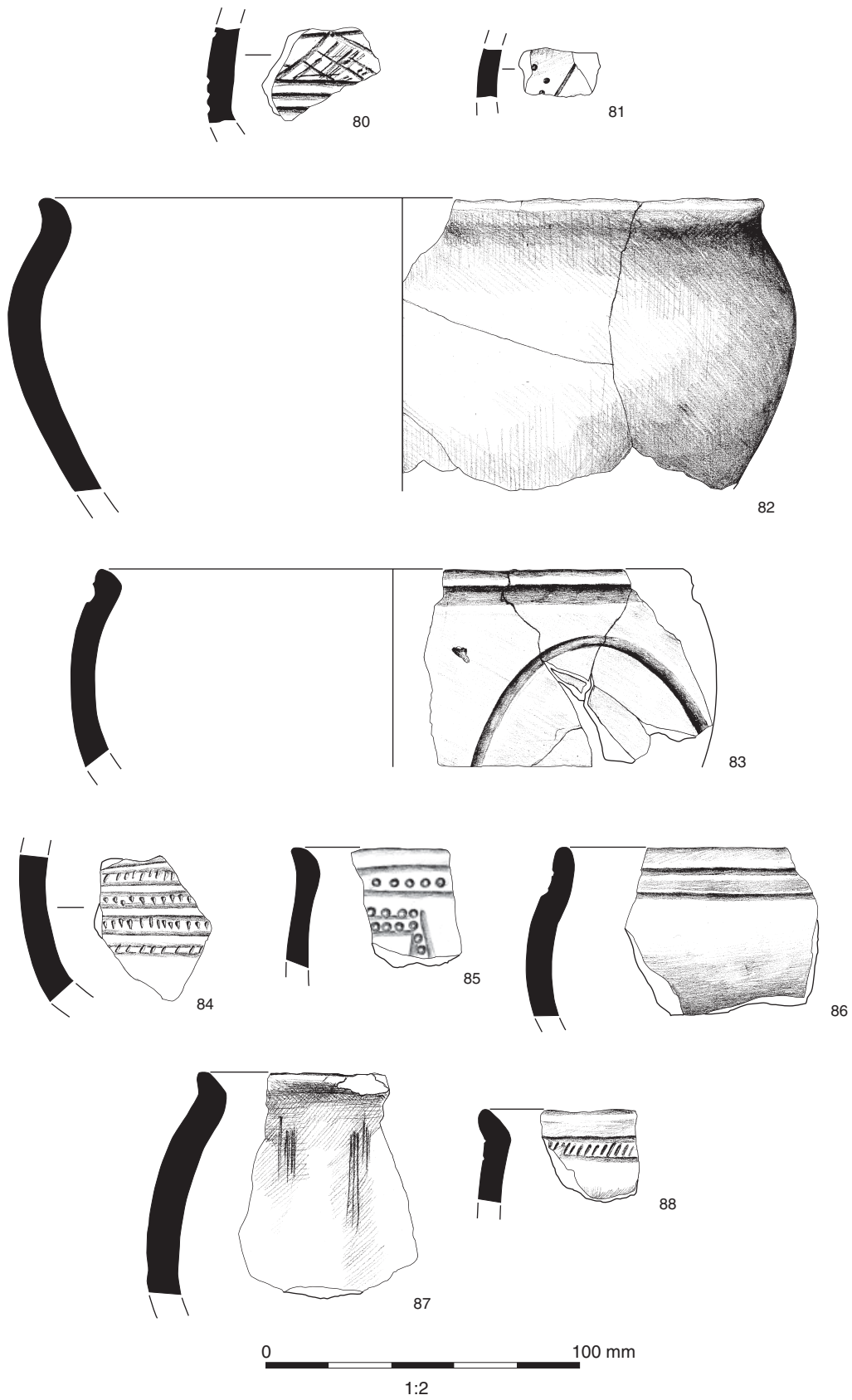


Figure 6.5: Prehistoric pottery: catalogue nos. 80 to 88

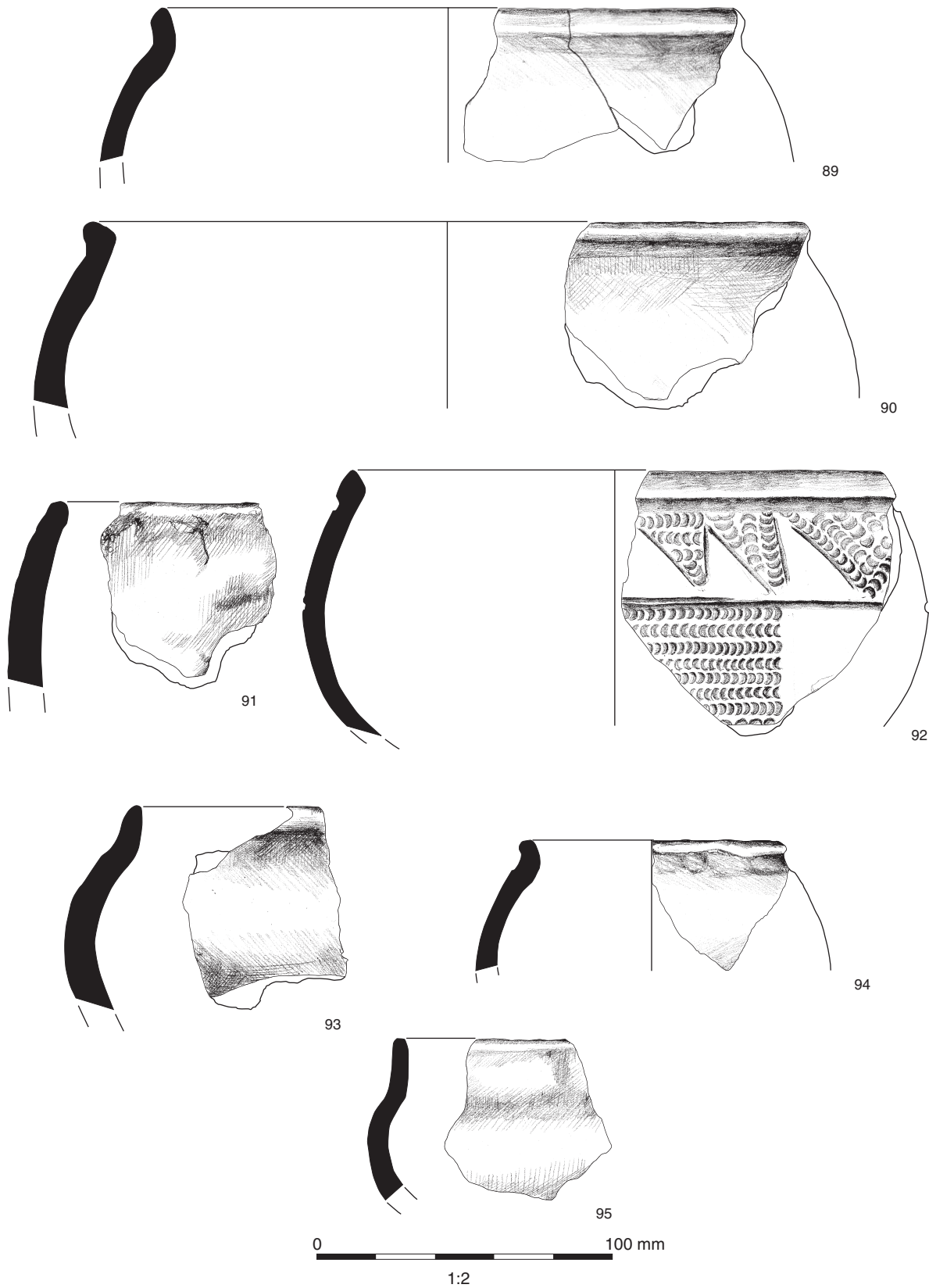


Figure 6.6: Prehistoric pottery: catalogue nos. 89 to 95



1



2

0 100 mm

1:2

Figure 6.7: Worked stone: 1. Loomweight fragments, chalky greensand.
2. Loomweight fragments, chalky greensand.
Both from primary fill of MIA pit 19019 (context 19021)

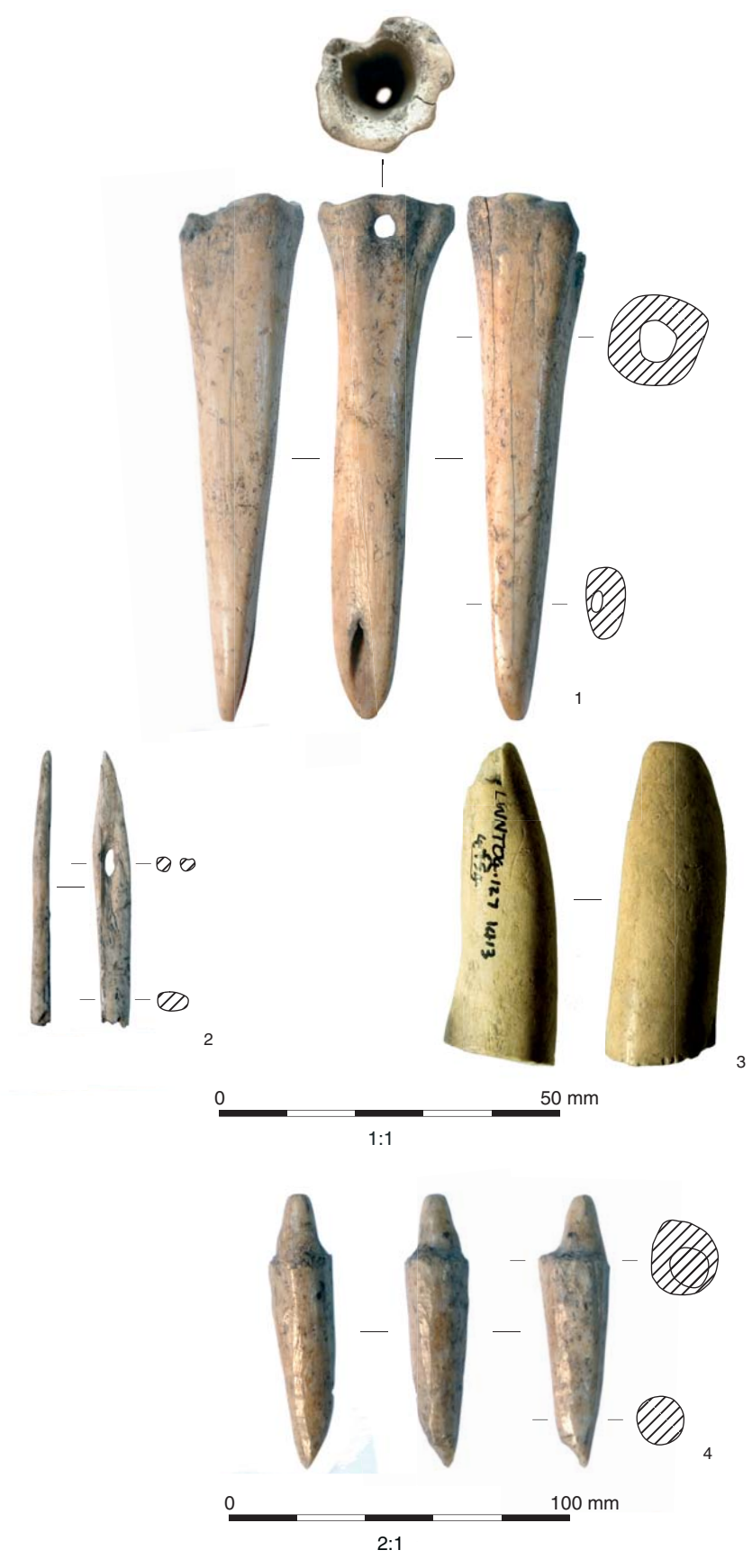


Figure 6.8: Worked bone objects: 1. Gouge; 2. Needle; 3. Antler object; 4. Point



Figure 6.9: 1. Swan's neck pin; 2. Copper alloy sword chape