

Scale 1:25,000

Reproduced from the Landranger 1:50,000 scale by permission of the Ordnance Survey on behalf of The Controller of Her Majesty's Stationery Office
© Crown Copyright 1997. All rights reserved. Licence No. AL 100005569

Figure 12.1: Site location

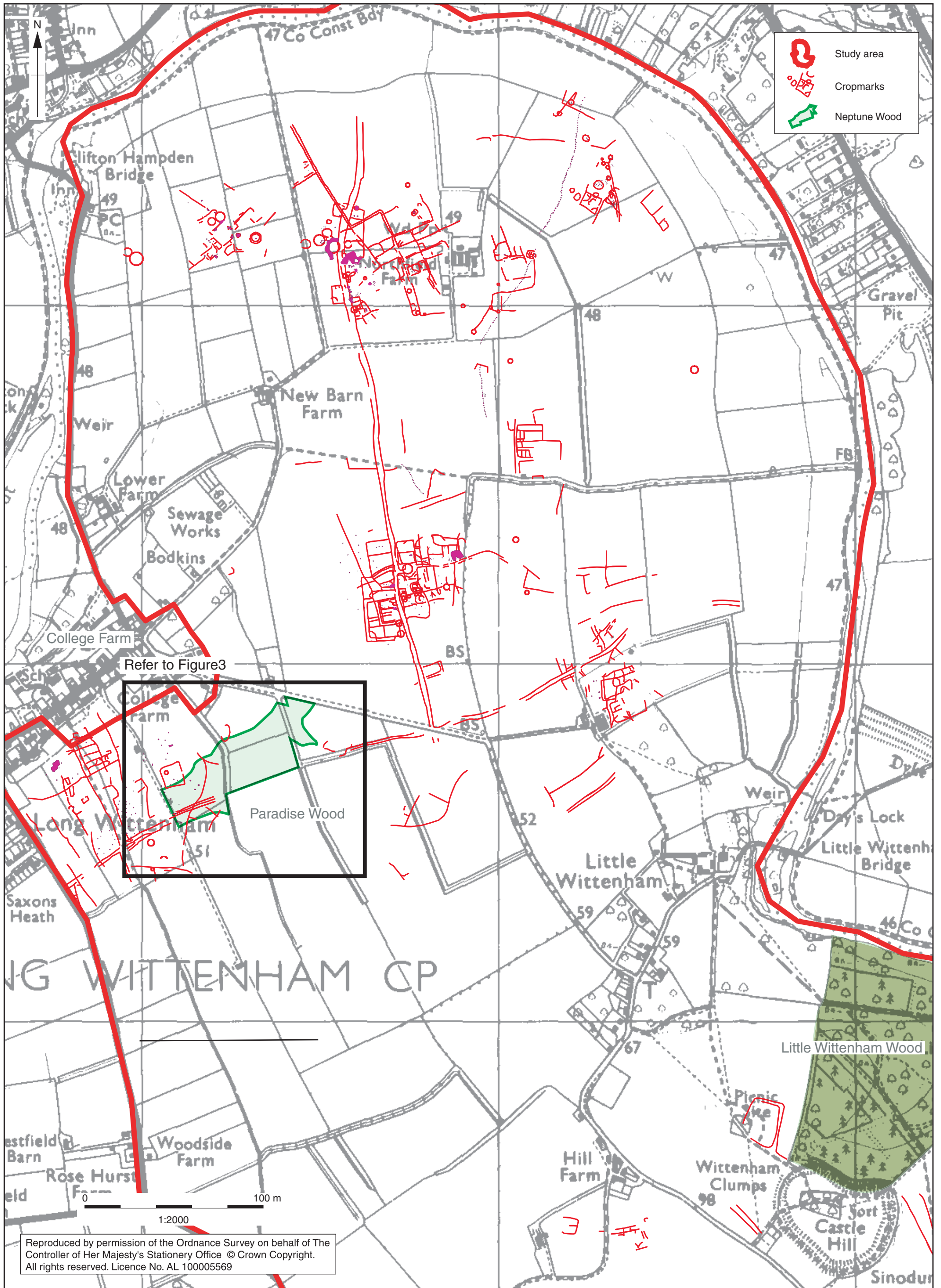


Figure 12.2: Outline of the wood laid over cropmark plot (taken from Benson and Miles 1972, map 32)

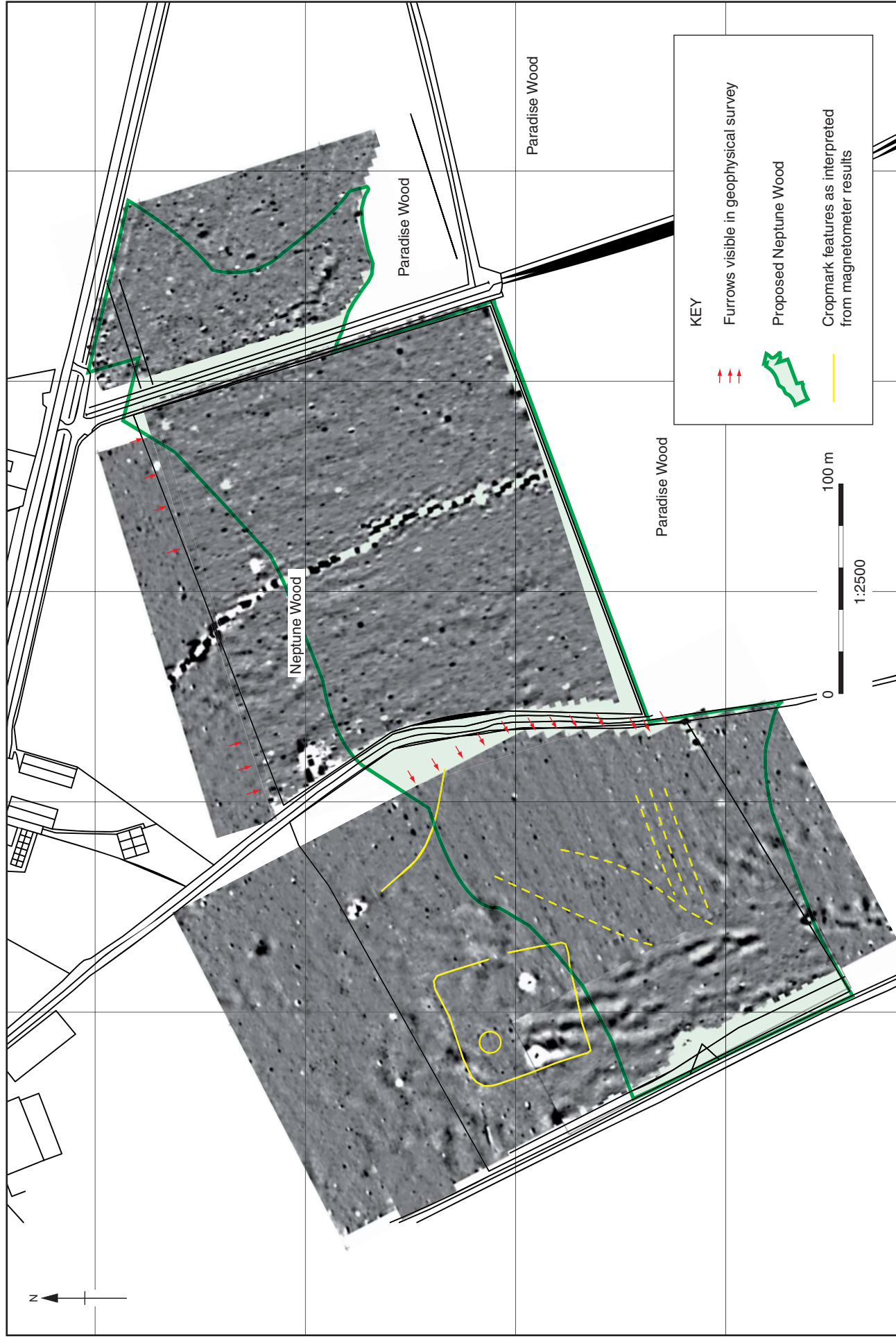


Figure 12.3: Geophysical survey results shown as greyscale plot in relation to cropmarks, highlighting the features interpreted as corresponding to cropmarks, and indicating furrows

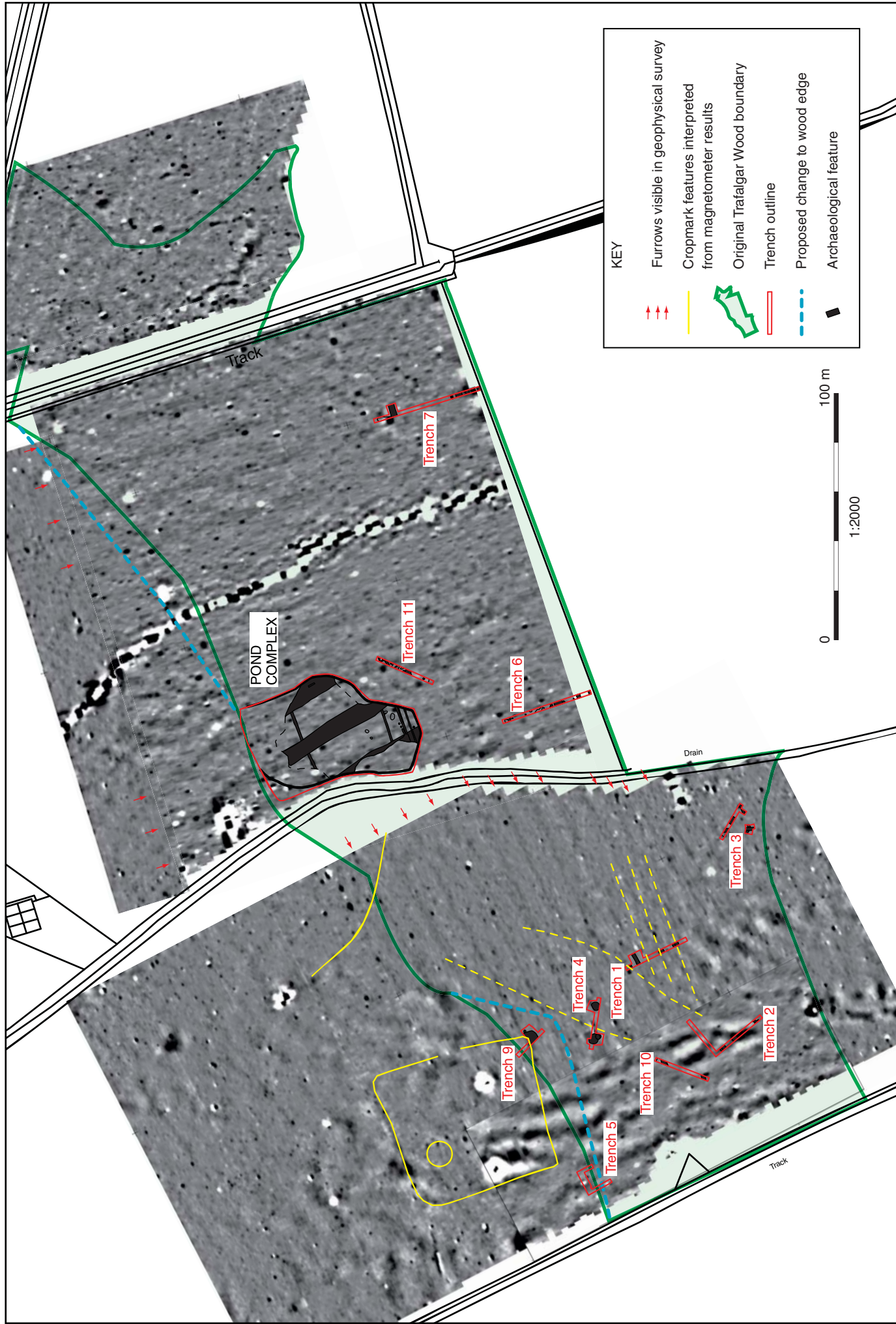


Figure 12.4: Trench location plan in relation to geophysical survey

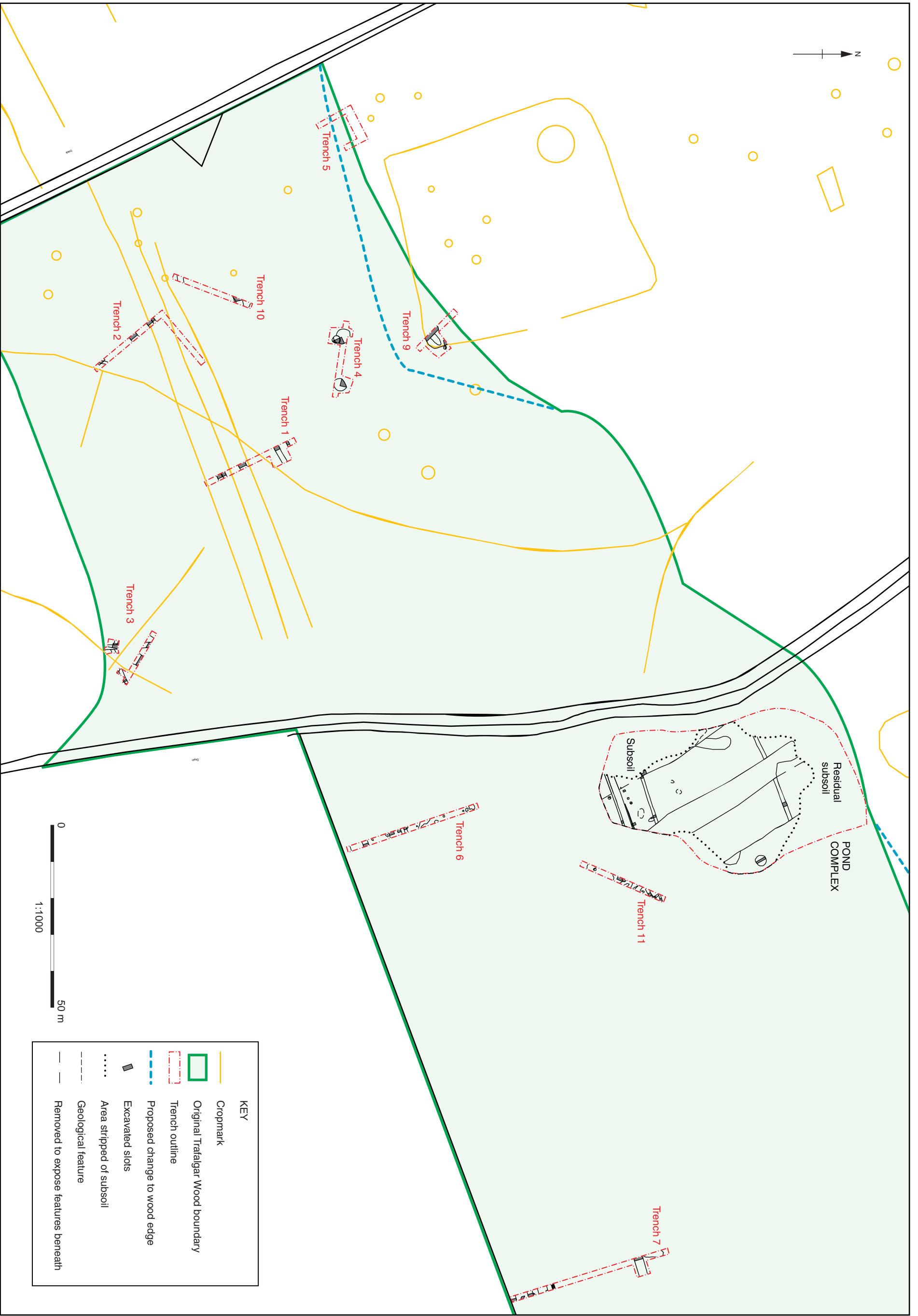


Figure 12.5: Trenches with archaeological features in relation to cropmark plot

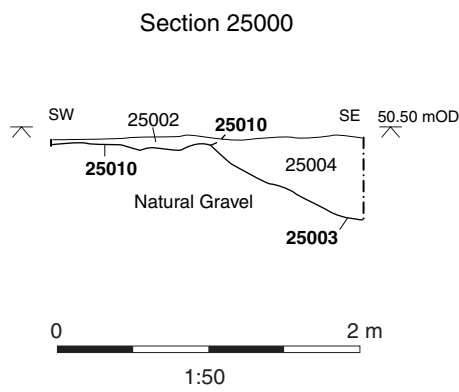
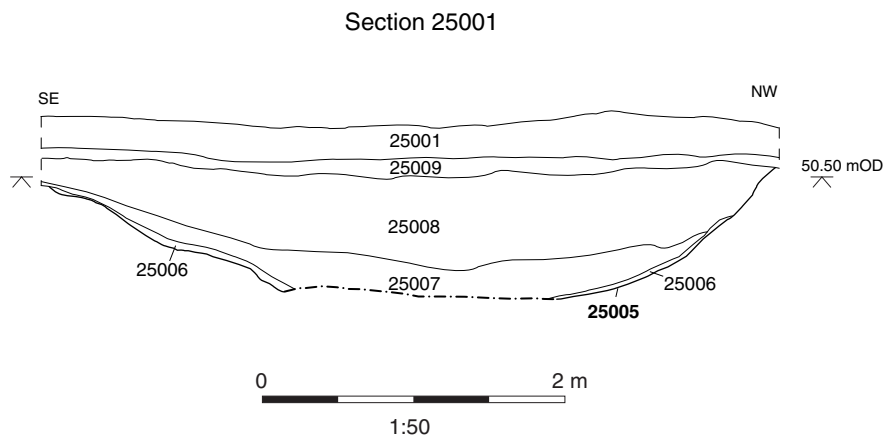
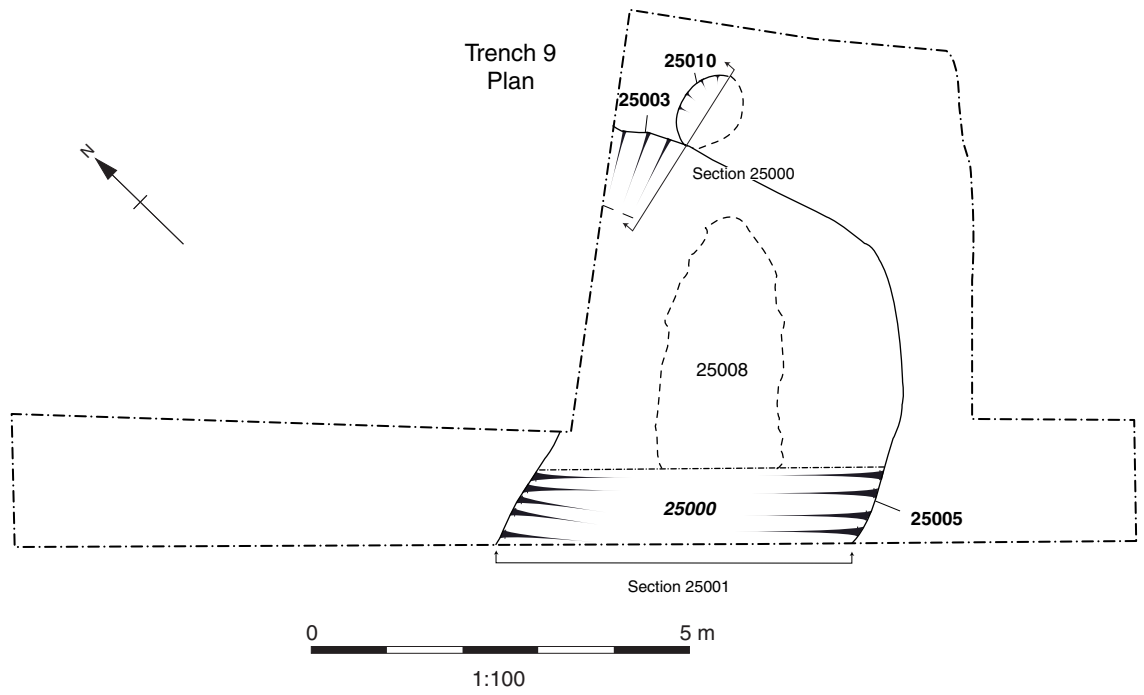


Figure 12.6: Trench 9, plan and sections

Trench 4 Plan

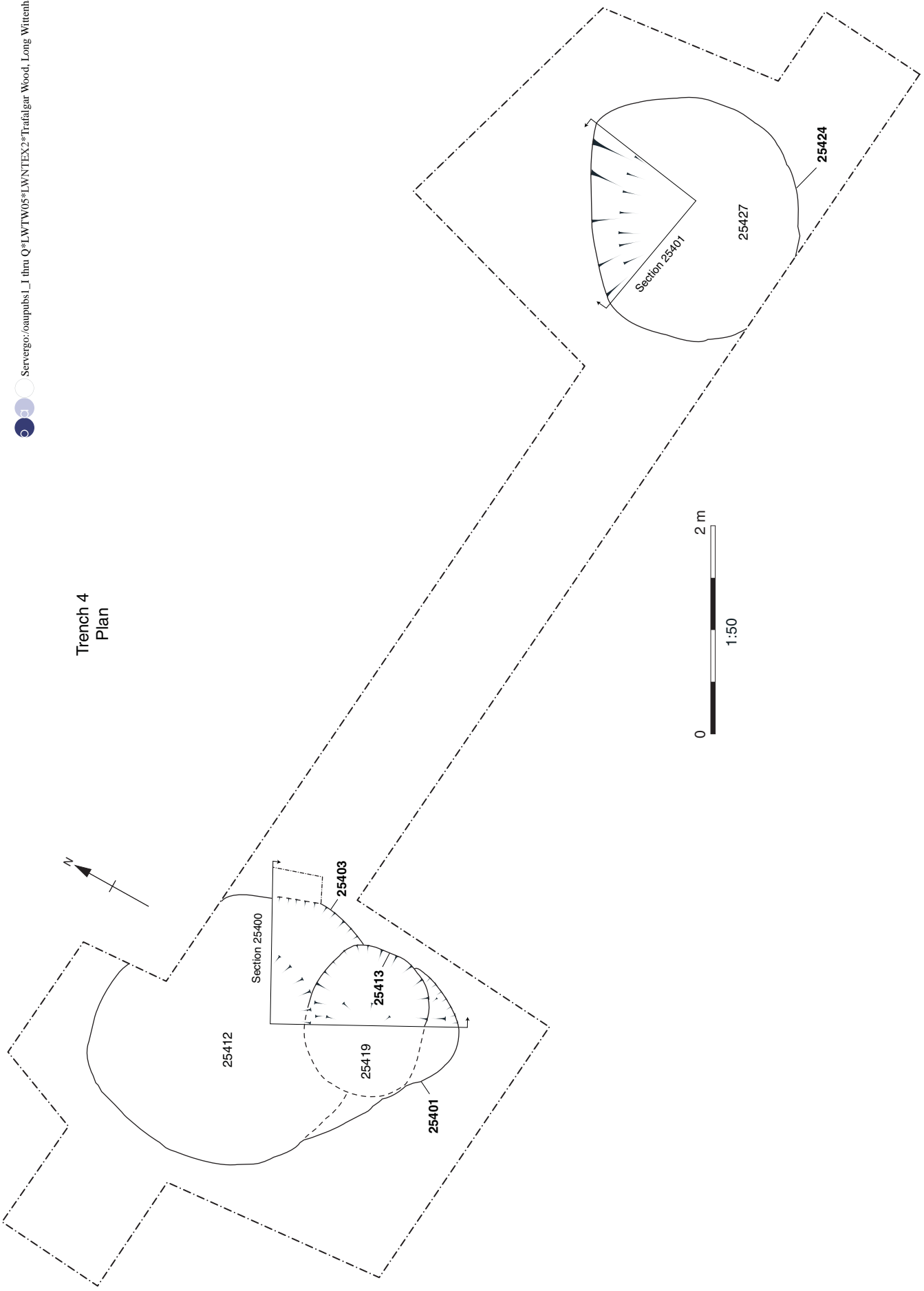
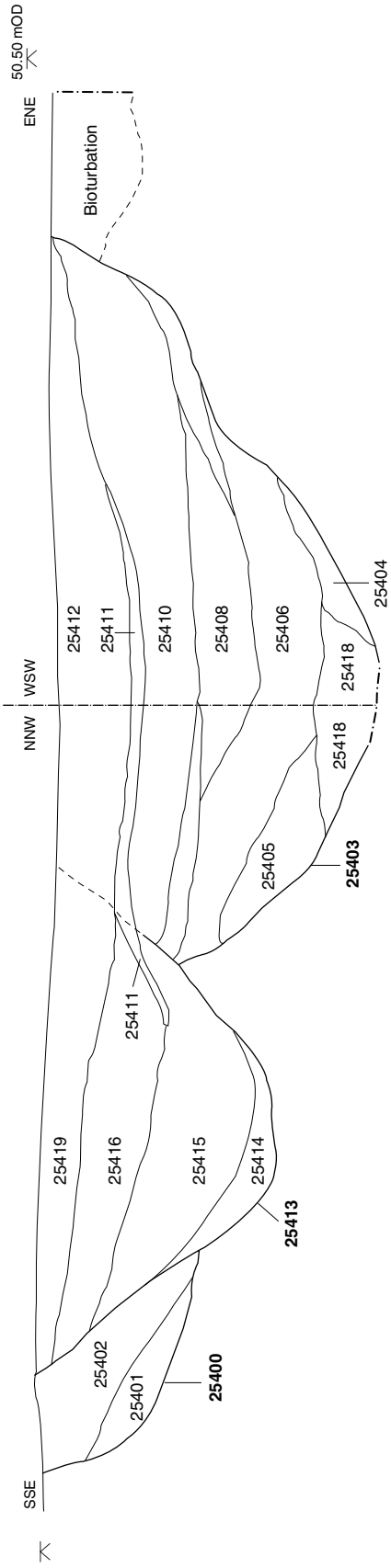


Figure 12.7: Trench 4, plan

Trench 4
Section 25400



Trench 4
Section 25401

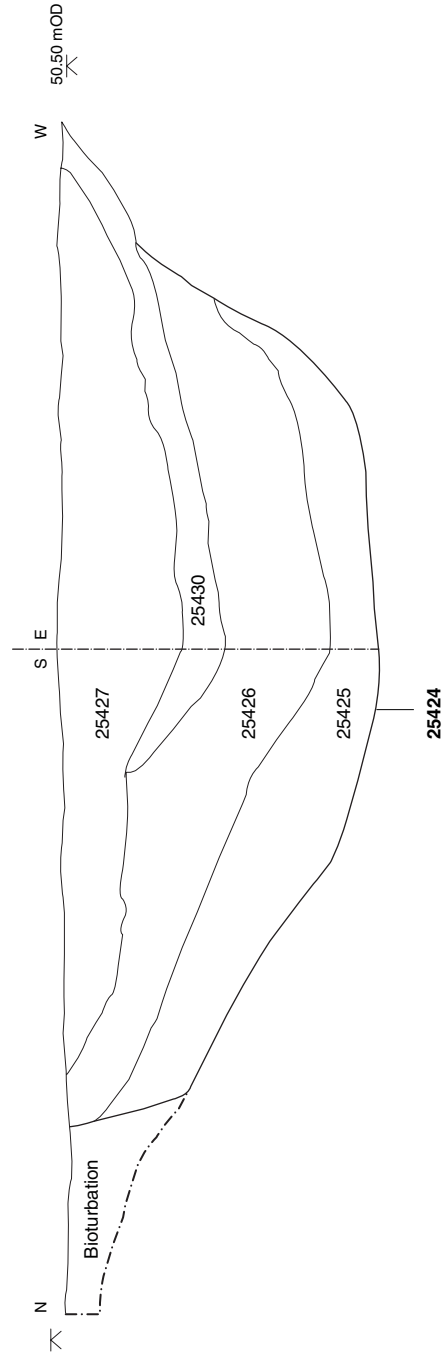


Figure 12.8 : Trench 4, sections

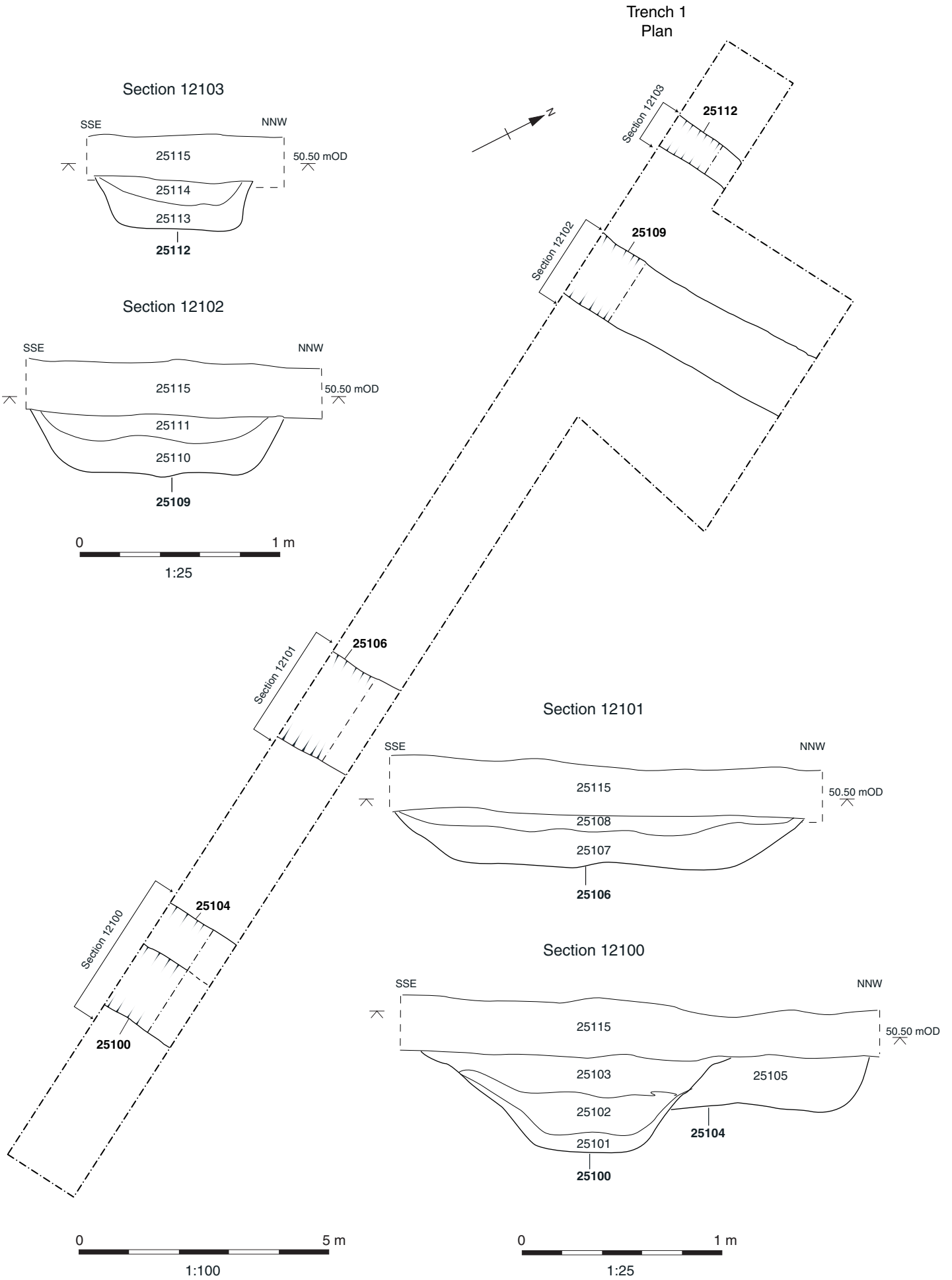


Figure 12.9 : Trench 1, Plan and sections

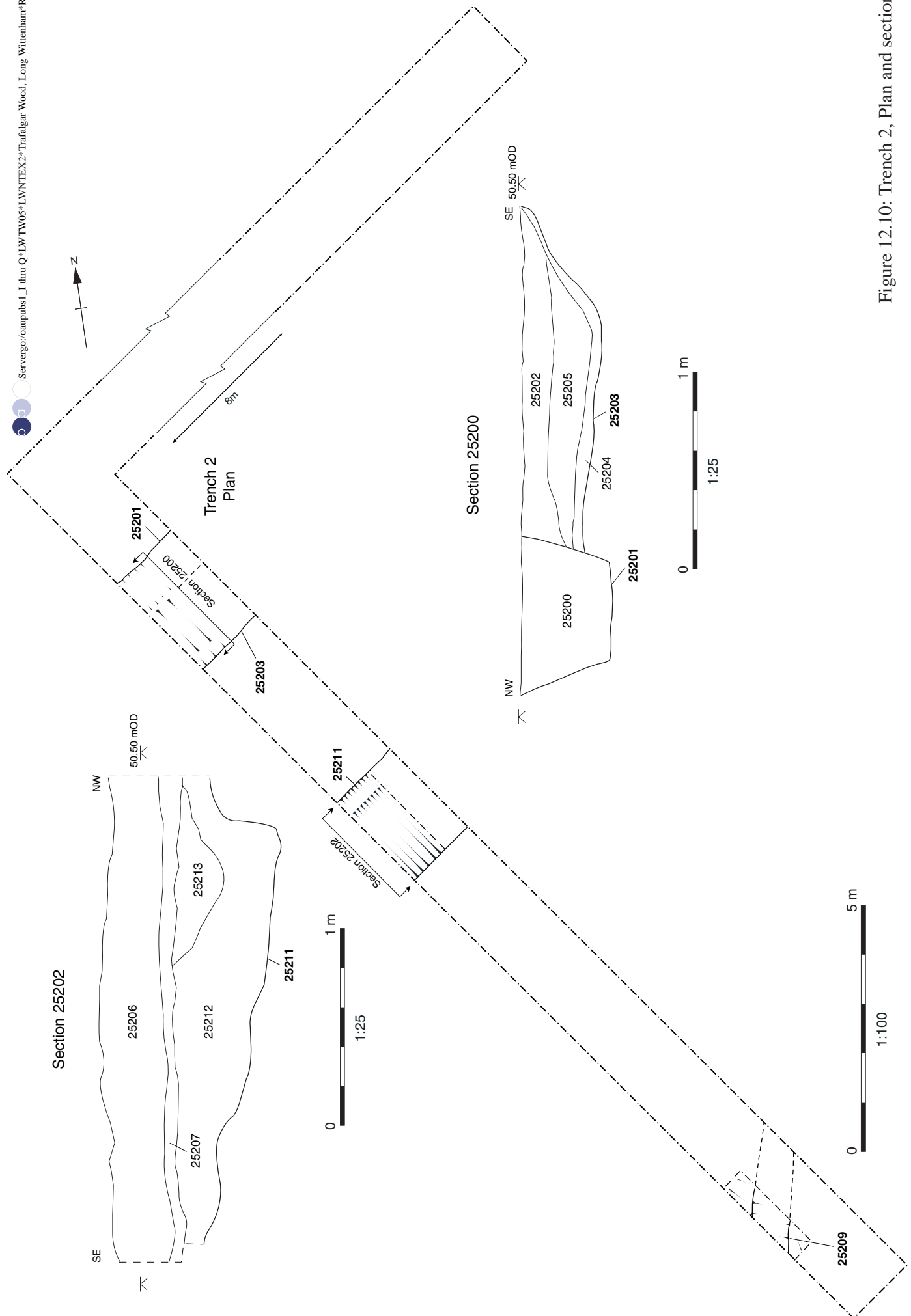


Figure 12.10: Trench 2, Plan and sections

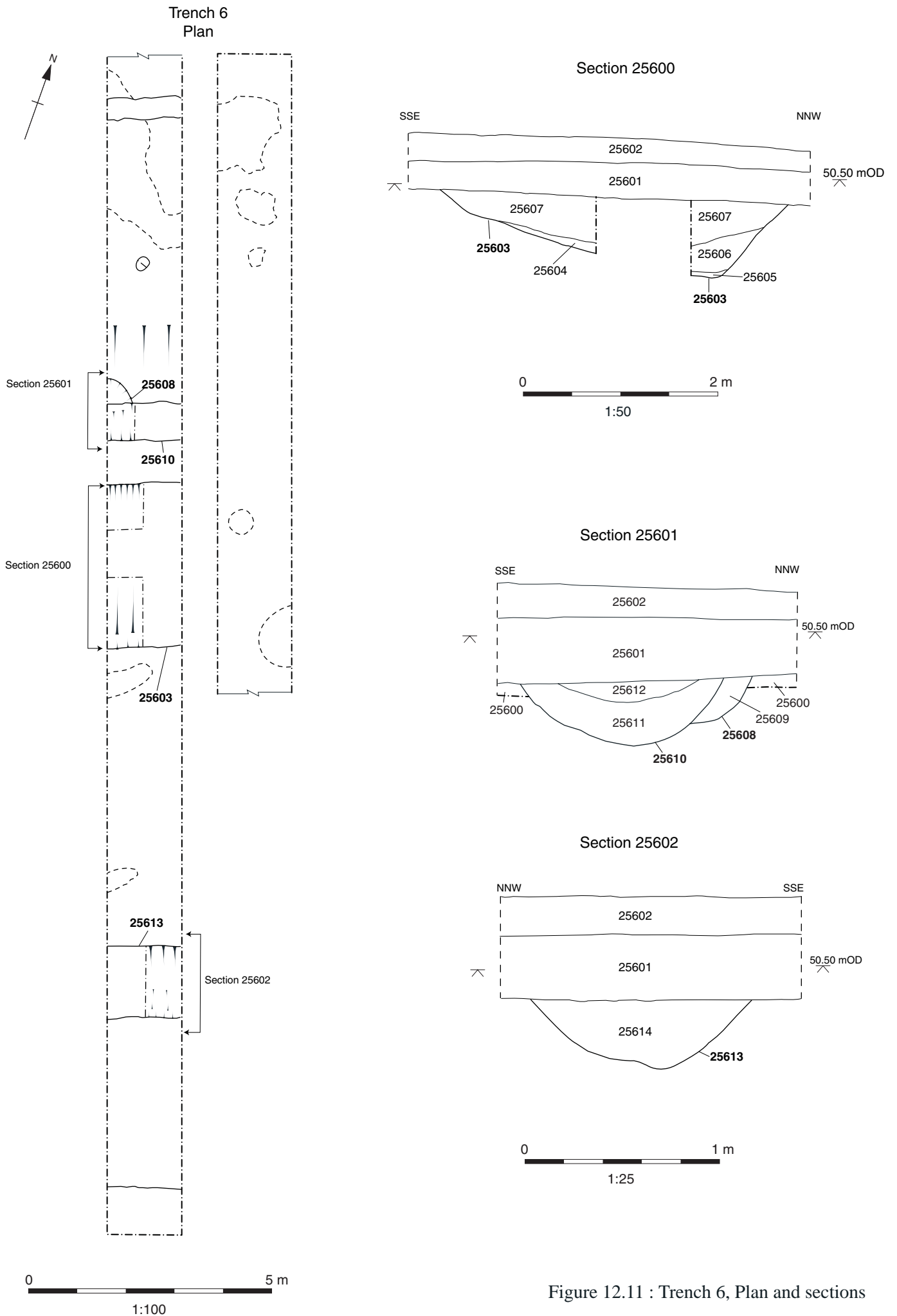


Figure 12.11 : Trench 6, Plan and sections

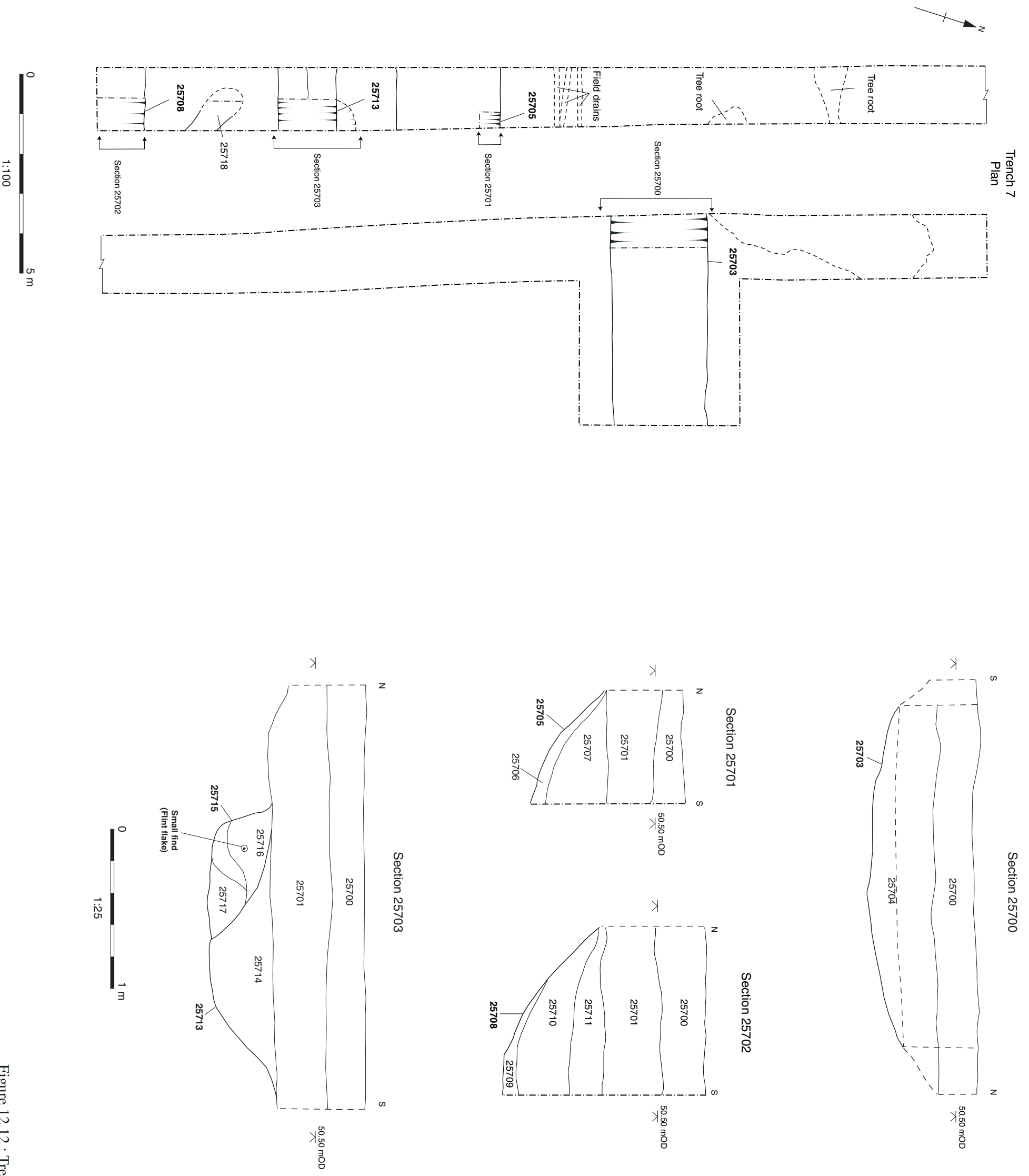


Figure 12.12 : Trench 7, Plan and sections

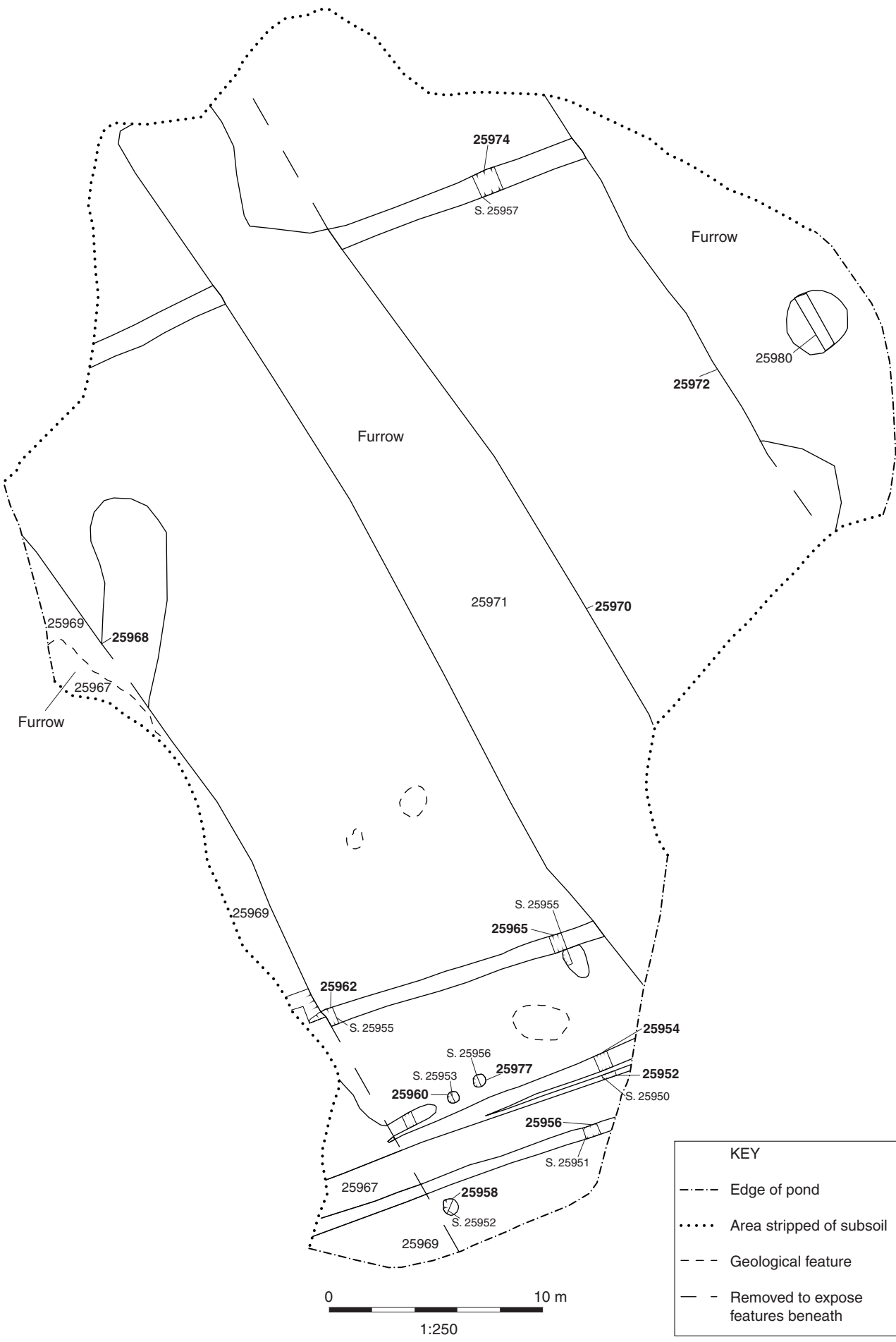


Figure 12.13: Pond Complex: plan showing area stripped to gravel, showing archaeology and masking furrows

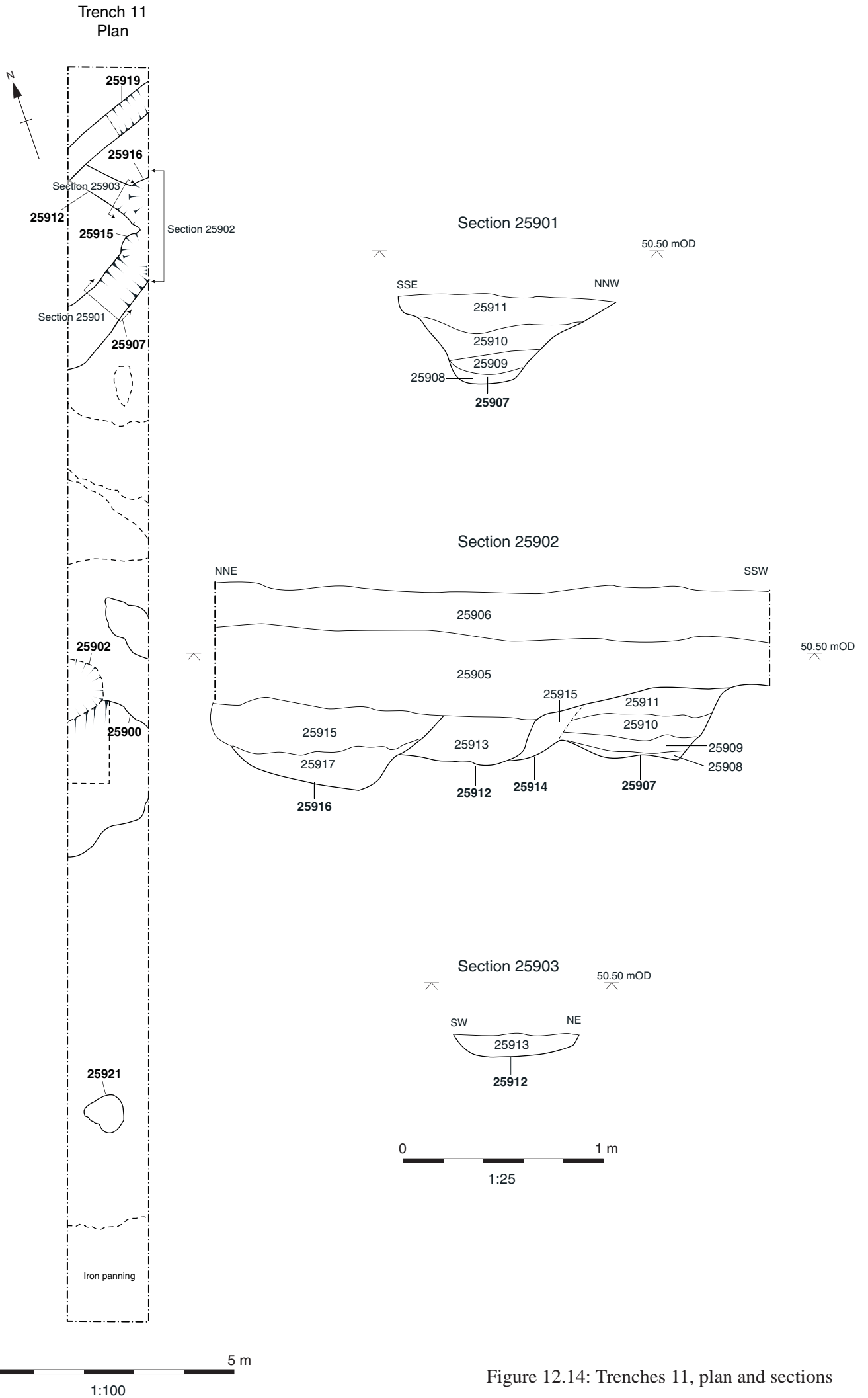


Figure 12.14: Trenches 11, plan and sections

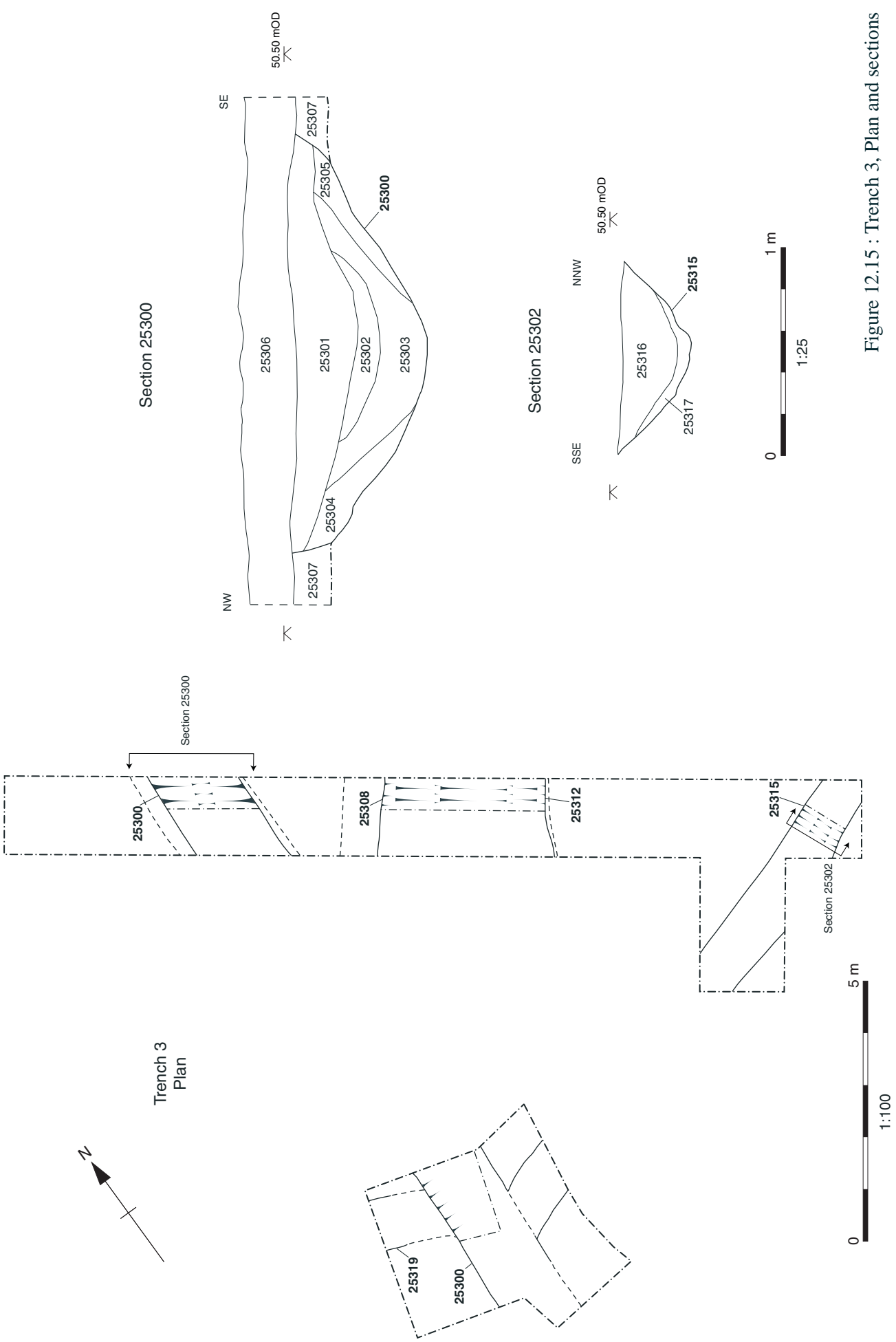


Figure 12.15 : Trench 3, Plan and sections

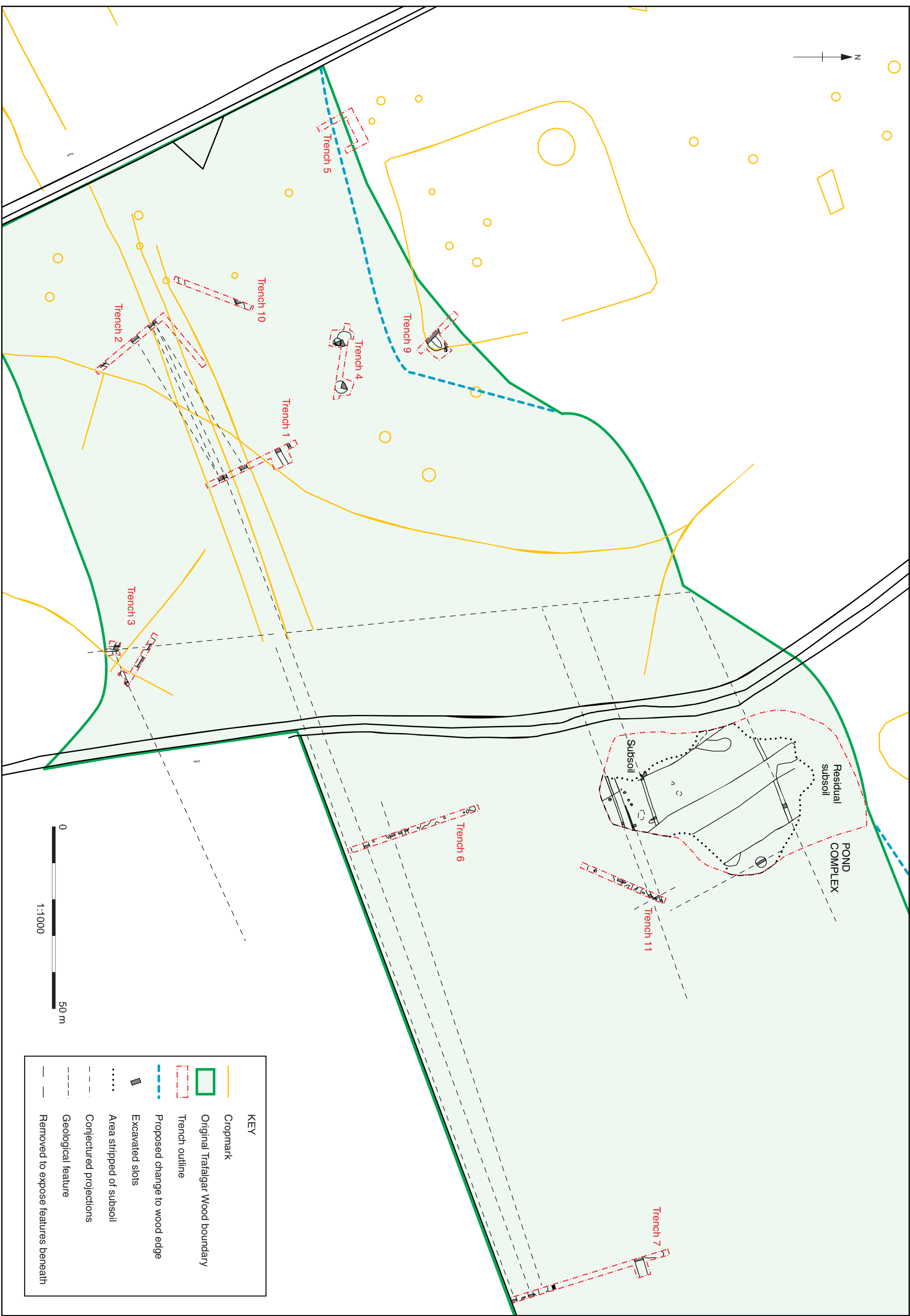


Figure 12.16: Interpretation showing possible field system and cropmark plot

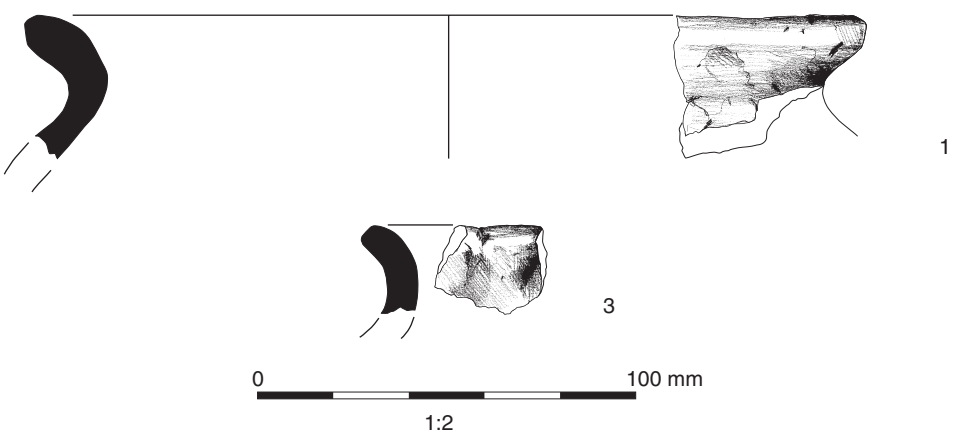
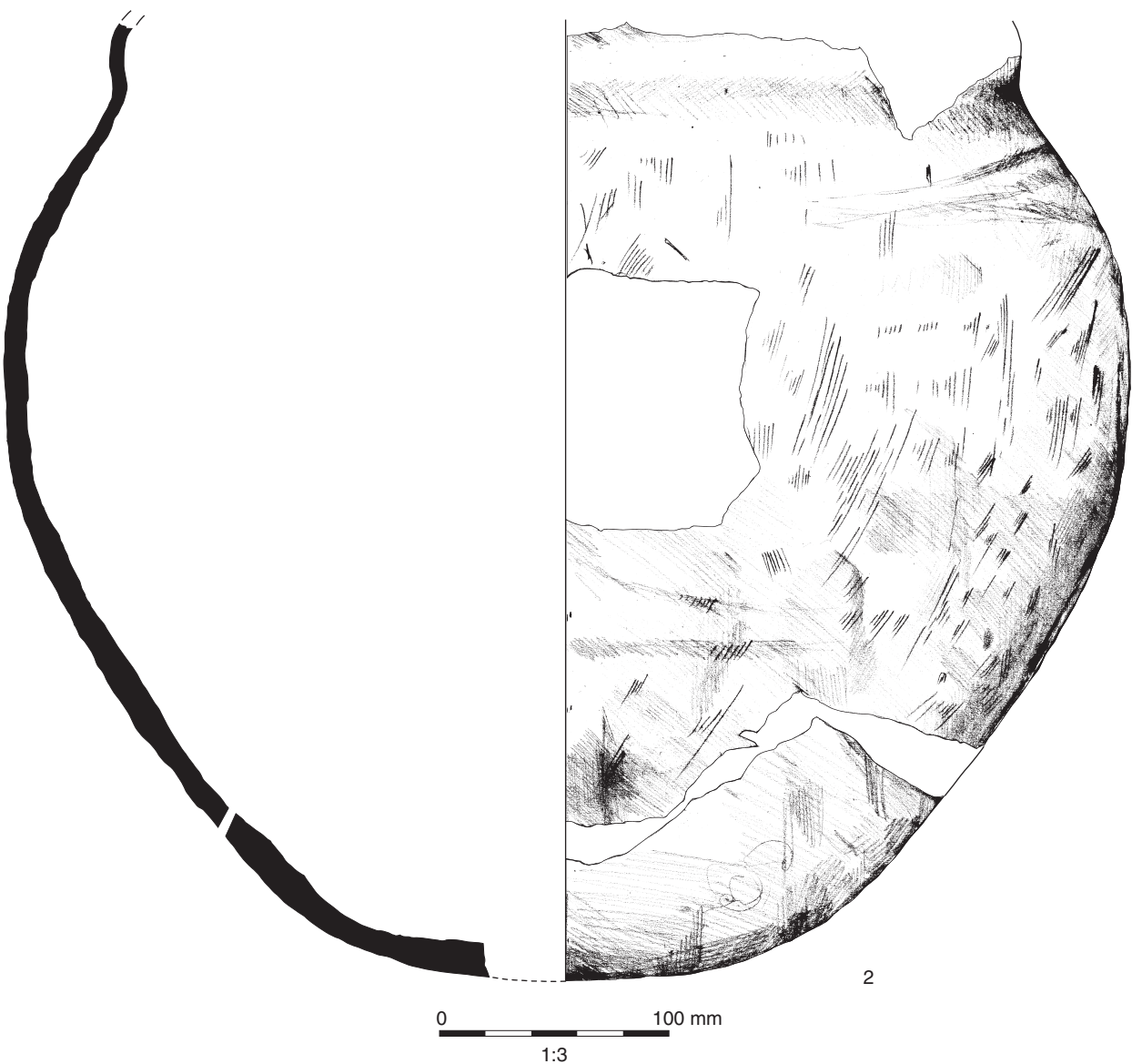


Figure 12.17: Saxon pottery.