

Specialist Report 9

Metal Objects

by Ian R Scott

Introduction

Metal finds were only recovered from two sites: the Access Road (COARD12) and the Pipeline Diversion (COLP15). The latter produced only a small number of finds (Table 9.1). The majority of the finds were recovered from the former, which produced 31 objects (140 fragments), including four copper alloy objects (107 fragments) and one lead object (1 fragment). All the finds are from post-Roman contexts. The ironwork from the Access Road is for the most part heavily encrusted with corrosion products and some objects have only been provisionally identified. One find from context 8013, a fill of pond 8008, apparently consists of a clump of iron objects fused together. The metal finds have been recorded onto a database. In most instances finds have been measured.

Composition of the assemblages (Table 9.1)

COARD12

There is a small number of identifiable objects other than nails. There is an L-shaped hinge pintle from hearth or oven 10011 (fill 10013). There were large fragments of copper alloy sheet together with numerous small fragments of sheet (no. fragments = c 102) from context 10071, a fill of a pit or tree-throw hole, 10067. These fragments may well have been from a single object, possibly the covering or binding for a box or chest. There were a number of miscellaneous pieces of metalwork.

Other items include three pieces probably from two different horseshoes of late medieval or early post medieval date (context 1009, fill of pond 1005), and a side bar from an 18th-century snaffle bit (context 8010, fill of pond 8008). The only personal item is an incomplete drawn wire dress or sewing pin with a wire wound head (context 8010, fill of pond 8008). This dates to the late medieval or early post-medieval period. There is a copper alloy washer (context 1006, fill of pond 1005), which may have been machine-cut, and a copper alloy ring (SF 1002, context 1160, fill of pit 1159), which cannot be closely dated. It has signs of thinning through wear on the hoop. There is an

iron pin or nail with square section stem and a piece of a lead rod with an oval section, possibly from a lead pencil of post-medieval date; both objects were recovered from subsoil.

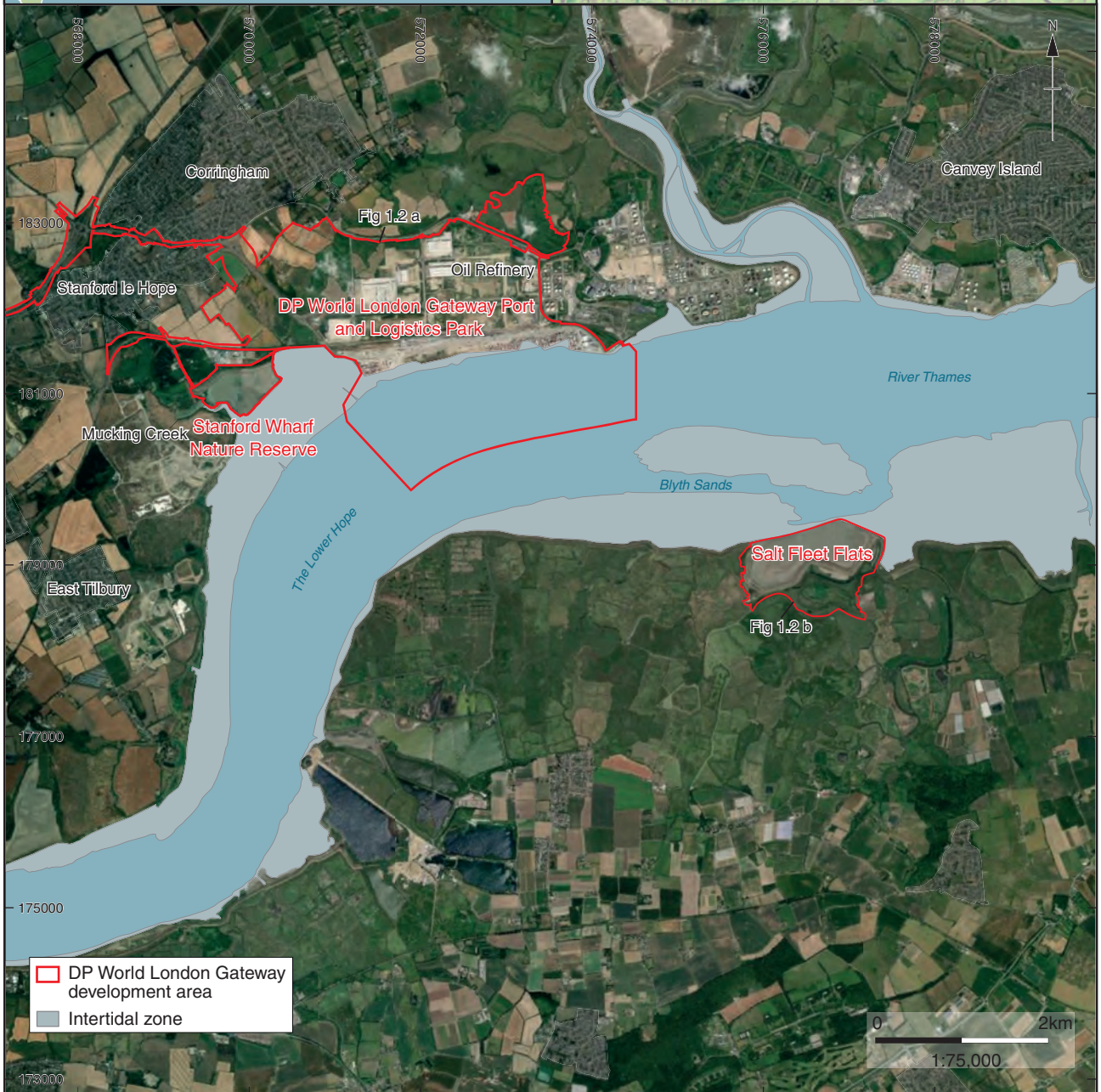
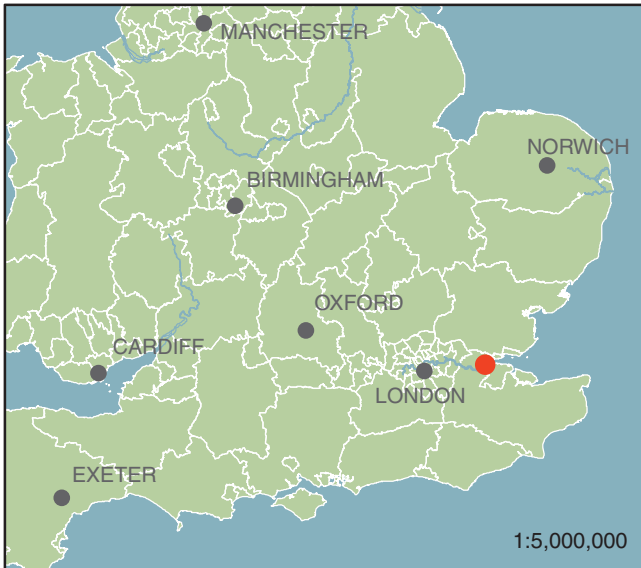
COLP 15

The finds comprise two nails, one quite large and length of wire (context 2905, fill of drainage or boundary ditch 2903) and an unstratified small fragment of copper alloy sheet.

Metal Objects Table

TABLE 9.1: SUMMARY OF THE METAL FINDS BY FEATURE, CONTEXT AND FUNCTION (QUANTIFICATION BY OBJECT COUNT)

Site code	Feature	Context	Transport	Personal	Structural	Nails	Misc.	Query	Totals	
COARD12	Pit 1154	1156					1		1	
	Pit 1159	1160					1		1	
	Pit 8023	8024				2			2	
	Pit 10067	10070					1	1		2
		10071							1	1
	Ditch 1163	1166						1	1	
	Ditch 8069	8070				1			1	
	Pond 1005	1006				1	1	2		3
		1009		2						2
	Pond 8008	8010		1	1	3	2		1	8
		8013					1		1	2
	Hollow 1146	1149						1		1
	Hollow 8101	8102				1				1
	Hearth or oven 10011	10013				1				1
	Tree throw or pit	10075						1	1	2
subsoil	1001				1				1	
	8001							1	1	
	Totals		3	1	7	8	7	6	32	
COLP15	Ditch 2903	2905				2	1		3	
	Unstratified	0					1		1	
	Totals					2	2		4	
Totals			3	1	7	10	9	6	36	



This is one of 16 specialist reports
within a digital volume that supports the findings
presented in
London Gateway:
Settlement, farming and industry from prehistory to the present
in the Thames Estuary
(ISBN 978-0-904220-81-0)

The digital volume can be accessed here:
<https://library.oxfordarchaeology.com/5778/>

