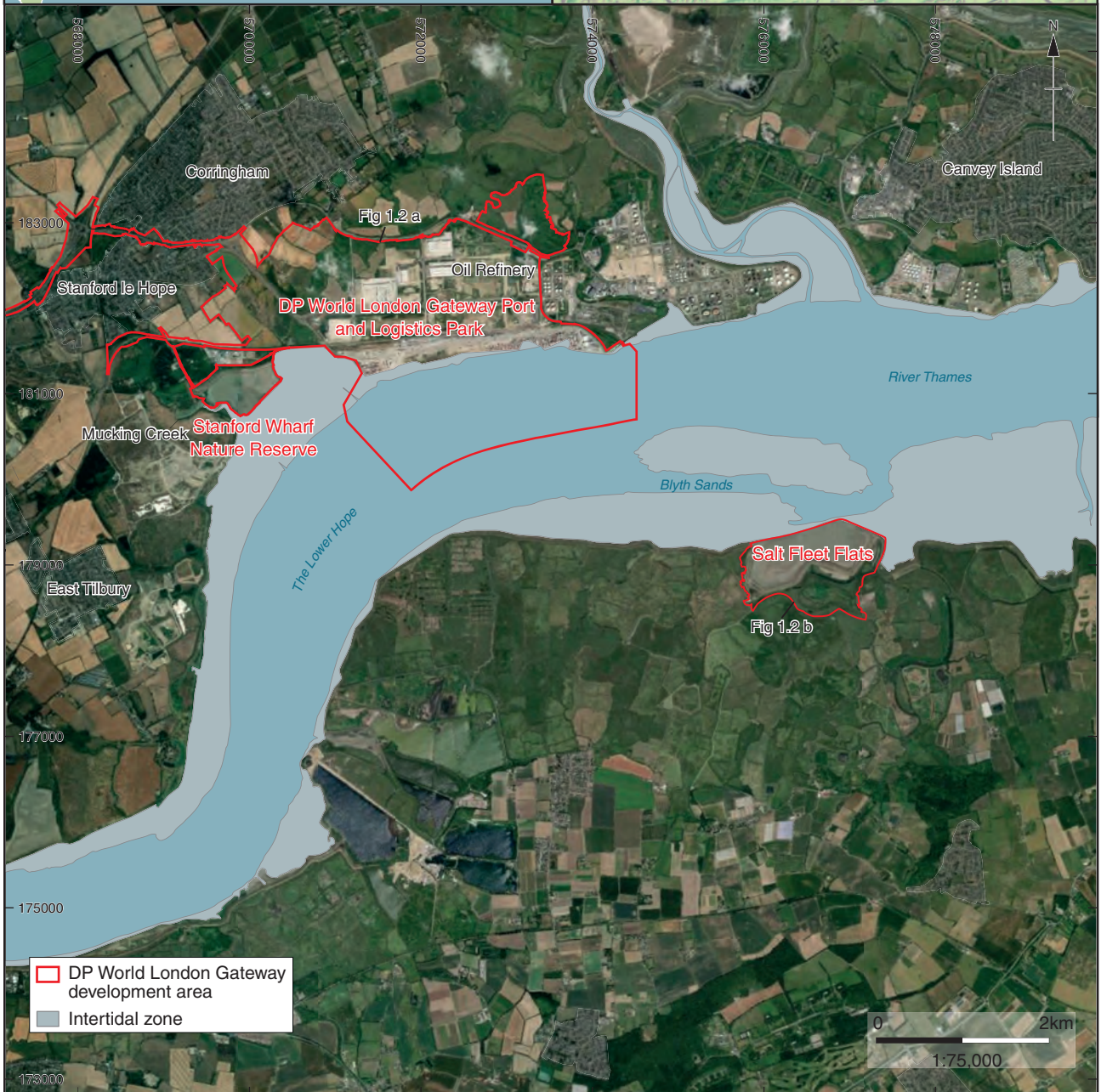
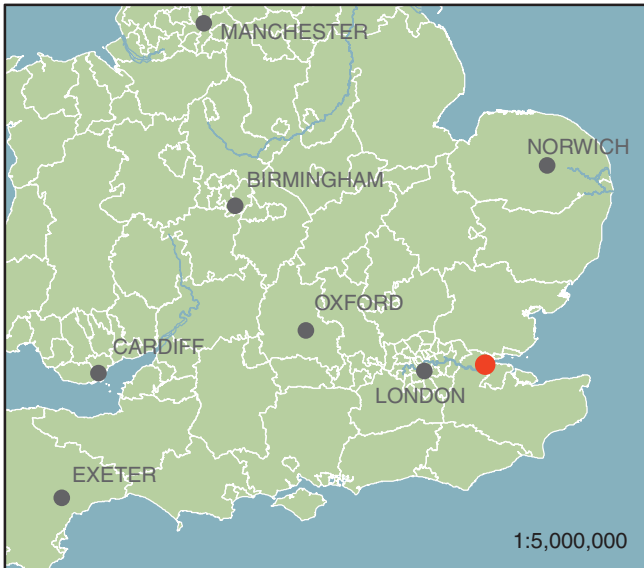


Specialist Report 8

Glass

by Ian R Scott

A single small piece of vessel glass, comprising a thin-walled body sherd in olive green glass, was recovered from context 1006, a fill of pond 1005. The sherd is undiagnostic in form, but it is too thin-walled to be a sherd from a wine bottle.



This is one of 16 specialist reports
within a digital volume that supports the findings
presented in
London Gateway:
Settlement, farming and industry from prehistory to the present
in the Thames Estuary
(ISBN 978-0-904220-81-0)

The digital volume can be accessed here:
<https://library.oxfordarchaeology.com/5778/>

