

(Microfiche) Chapter 4

The Roman occupation

4.A Introduction

The material in Chapter 4 of the microfiche corresponding to Chapter IV in the text consists of additional plans and sections and a table (Table 41 on Fiche 1#42) giving details of the ovens found in the eastern enclosures. These are arranged in the order of the sections of Chapter IV in the text.

4.B The Early Roman occupation

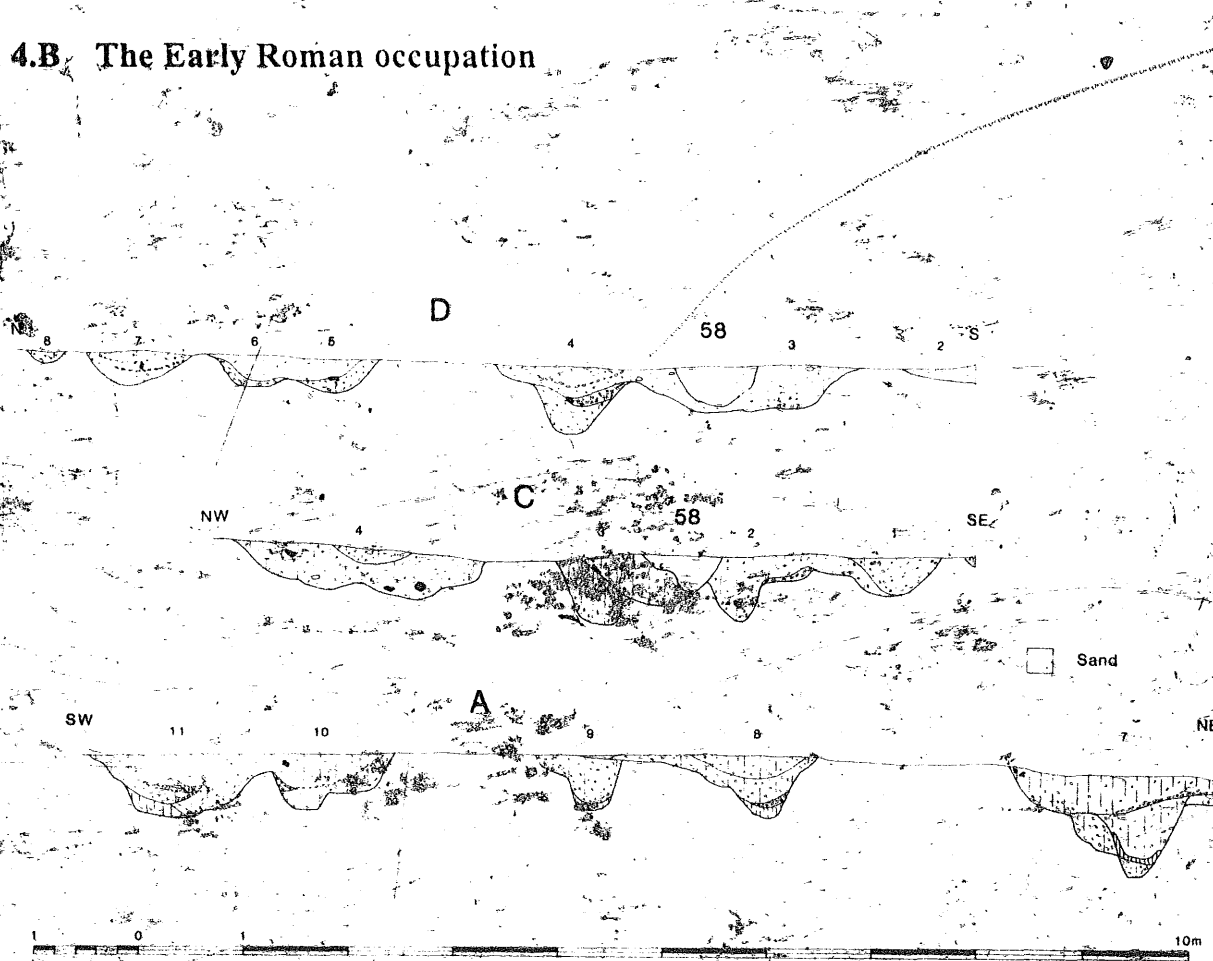


Figure 123 Early Roman House Enclosure 56 — sections

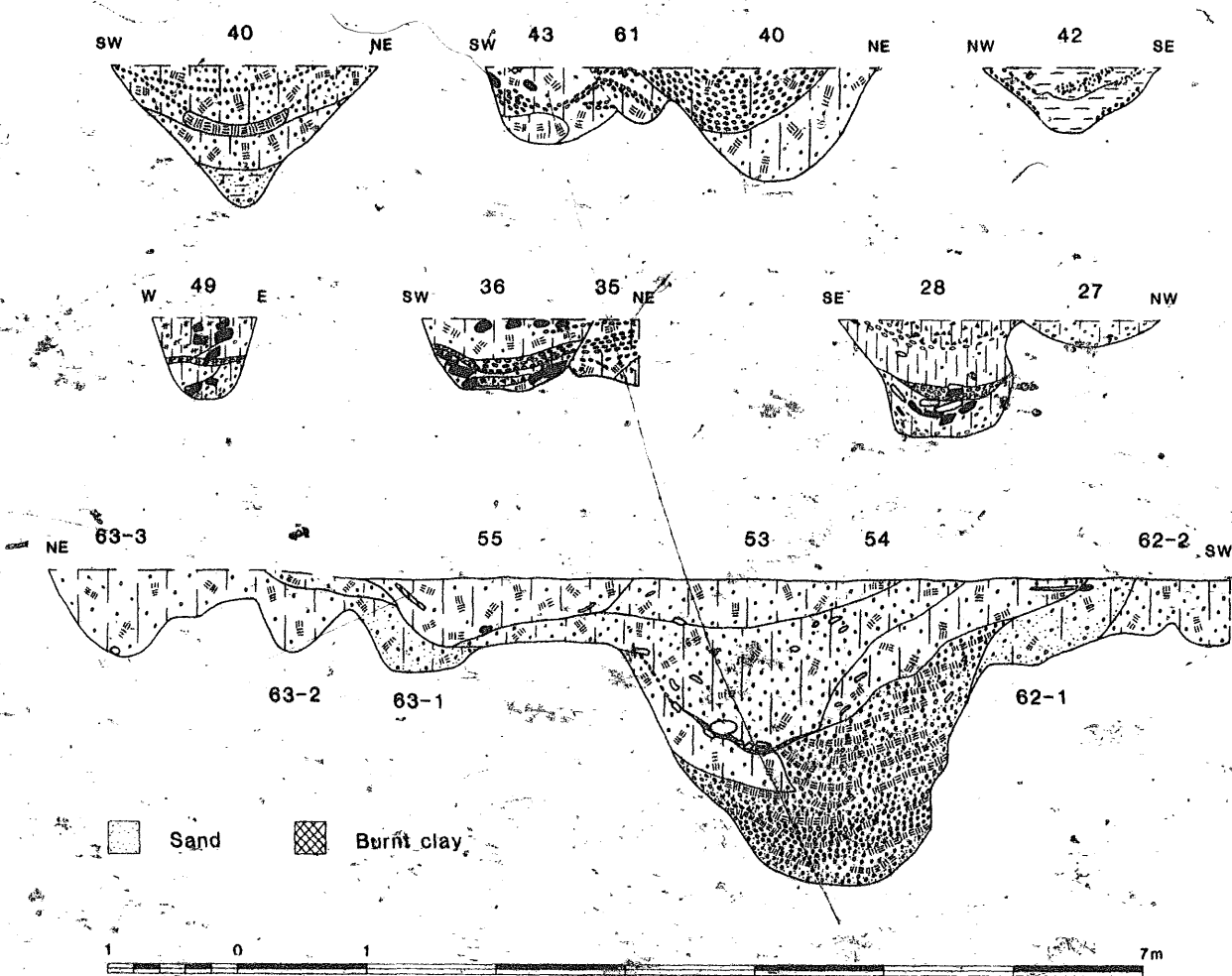


Figure 124 Early Roman pits and ditches — sections

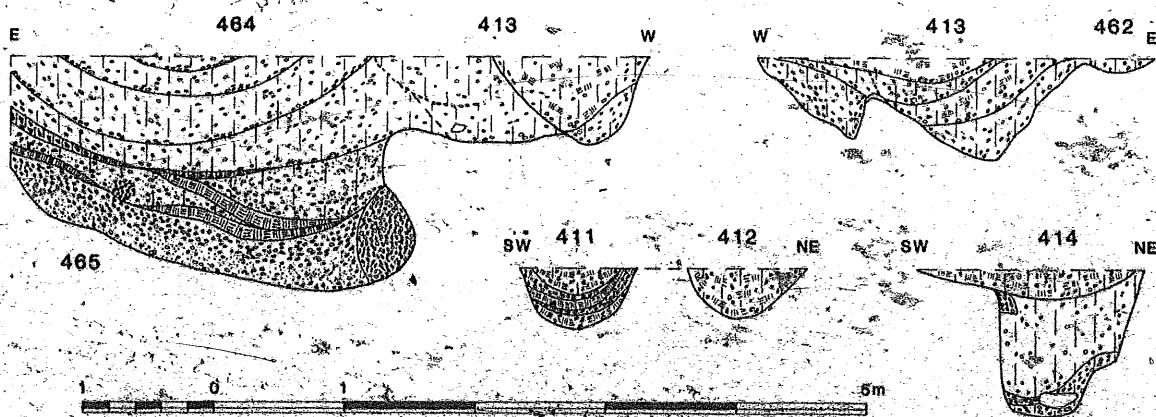
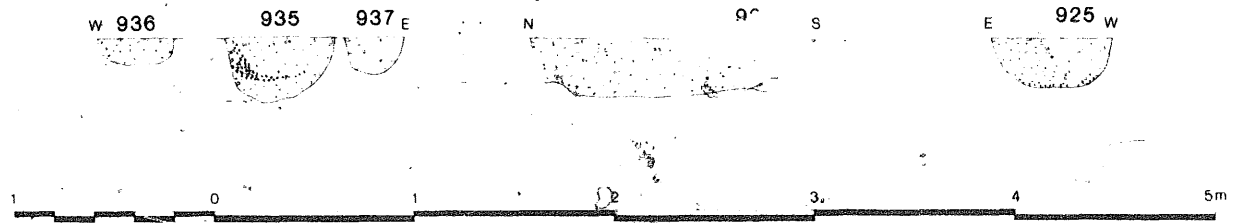


Figure 125 Early Roman occupation: sections of pits, postholes and gullies in western area

RECTANGULAR PIT-ALIGNMENT



ROMANO-BRITISH DITCHES & PITS

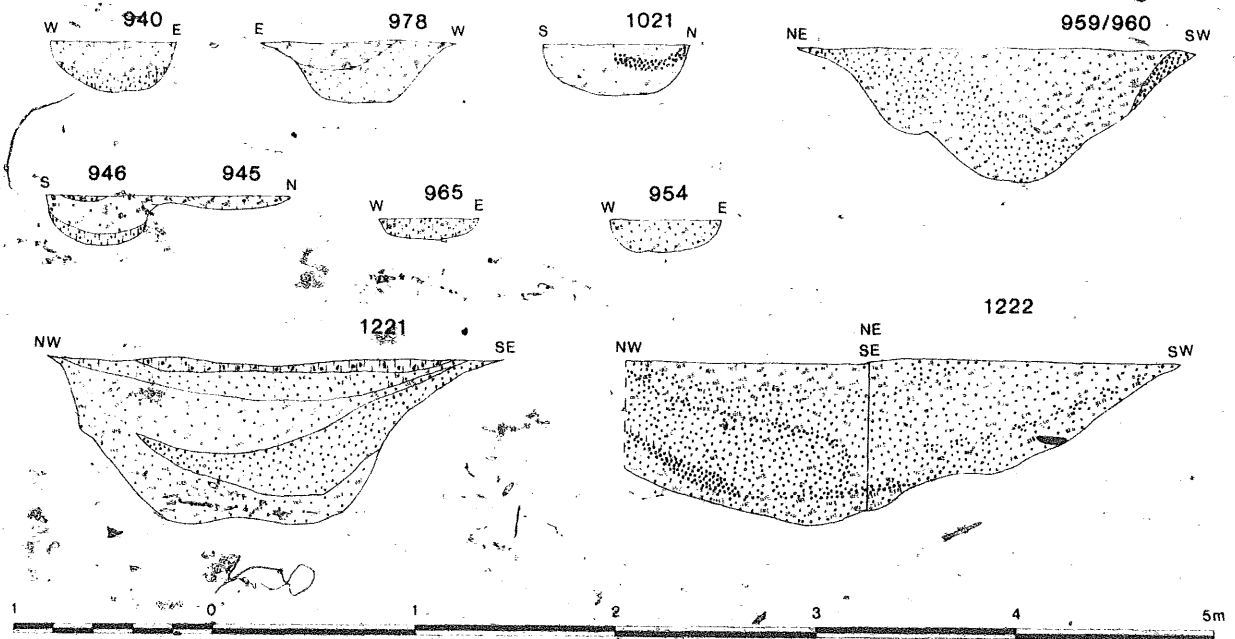


Figure 126 Early Roman occupation: sections of ditches, pits and postholes adjacent to droweway boundary 959/960

4.C The villa buildings and courtyard



Figure 127 Roman villa: plan of features underlying Buildings I and II

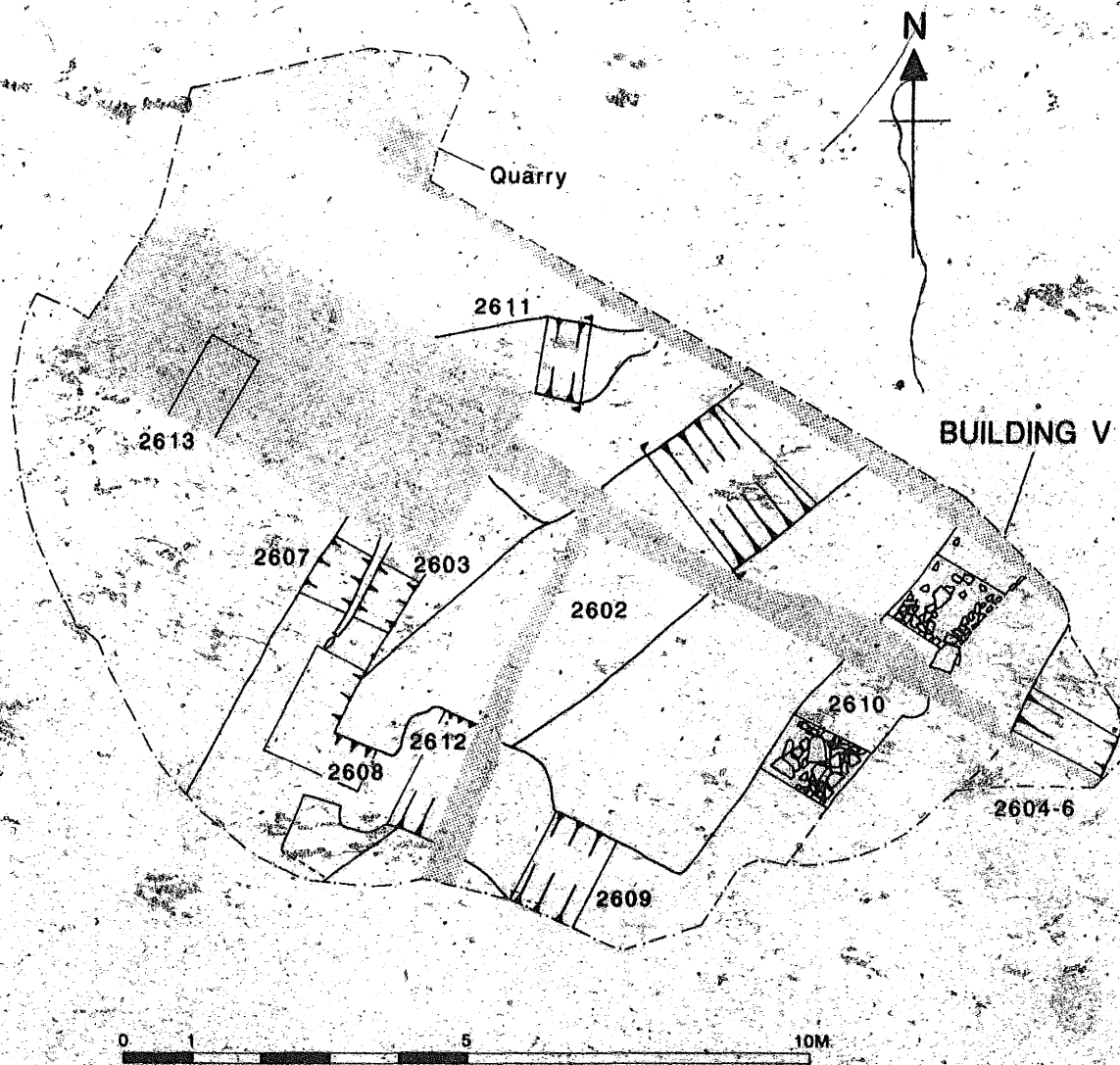


Figure 128. Plan of 2600s area excavated SE of Building IV, including Building V

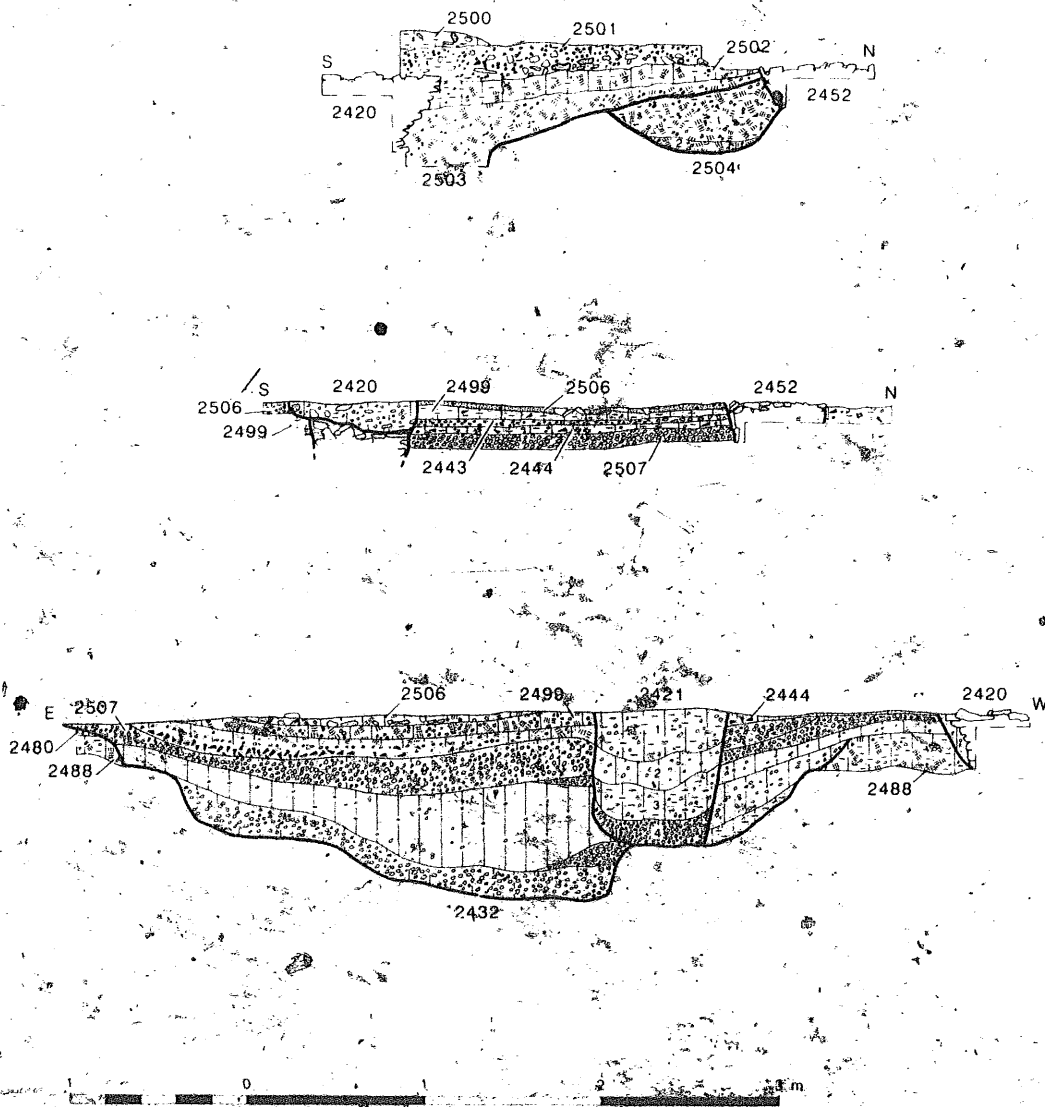


Figure 129 Roman villa: Building IV assorted sections



Figure 130 Roman villa: plan of features underlying Building III

4.D The enclosures west of the villa



Figure 131 Plan of western enclosures showing excavated trenches and drawn sections

WESTERN ENCLOSURE DITCHES

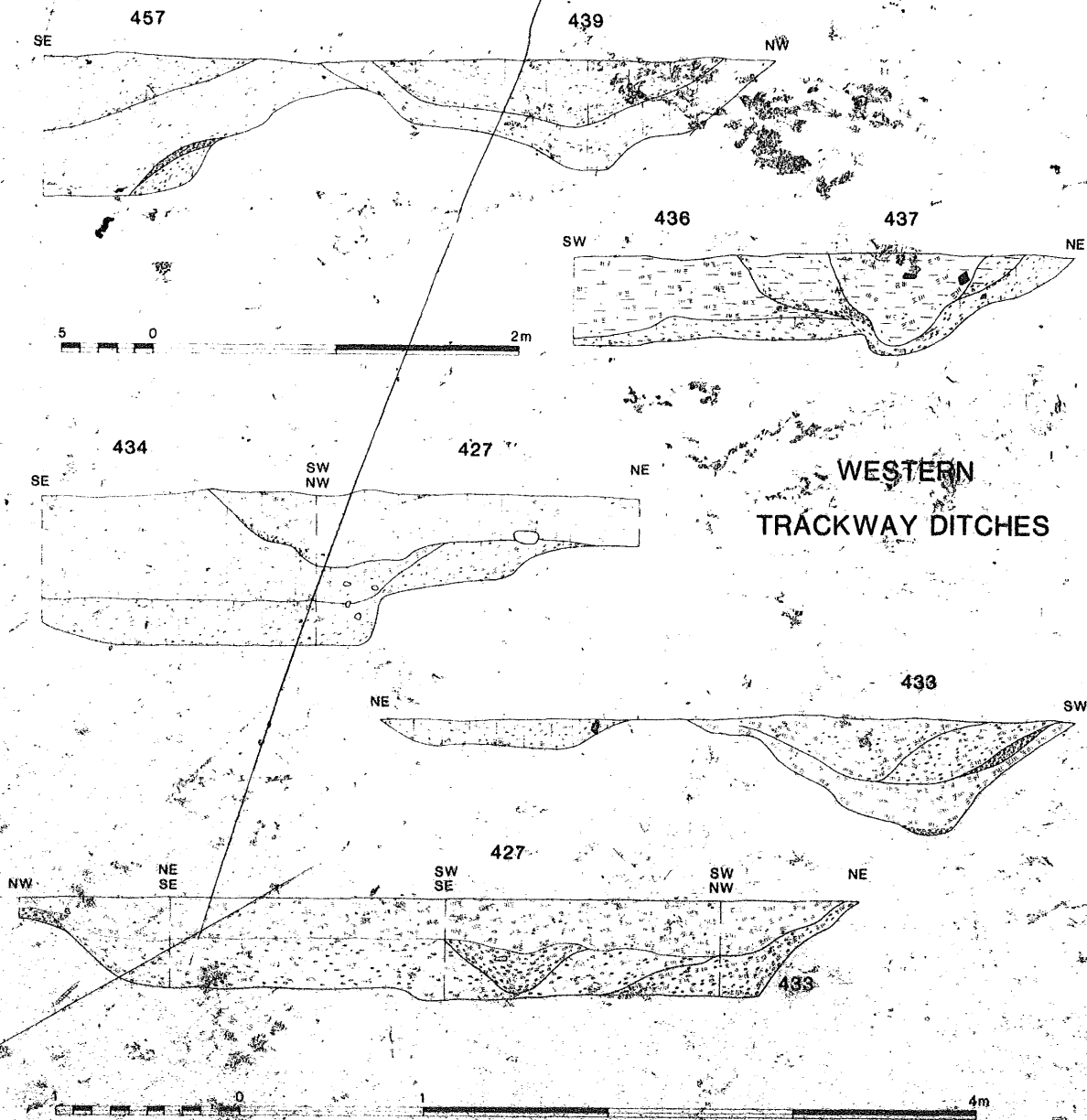


Figure 132 Western enclosures: sections of trackway ditches

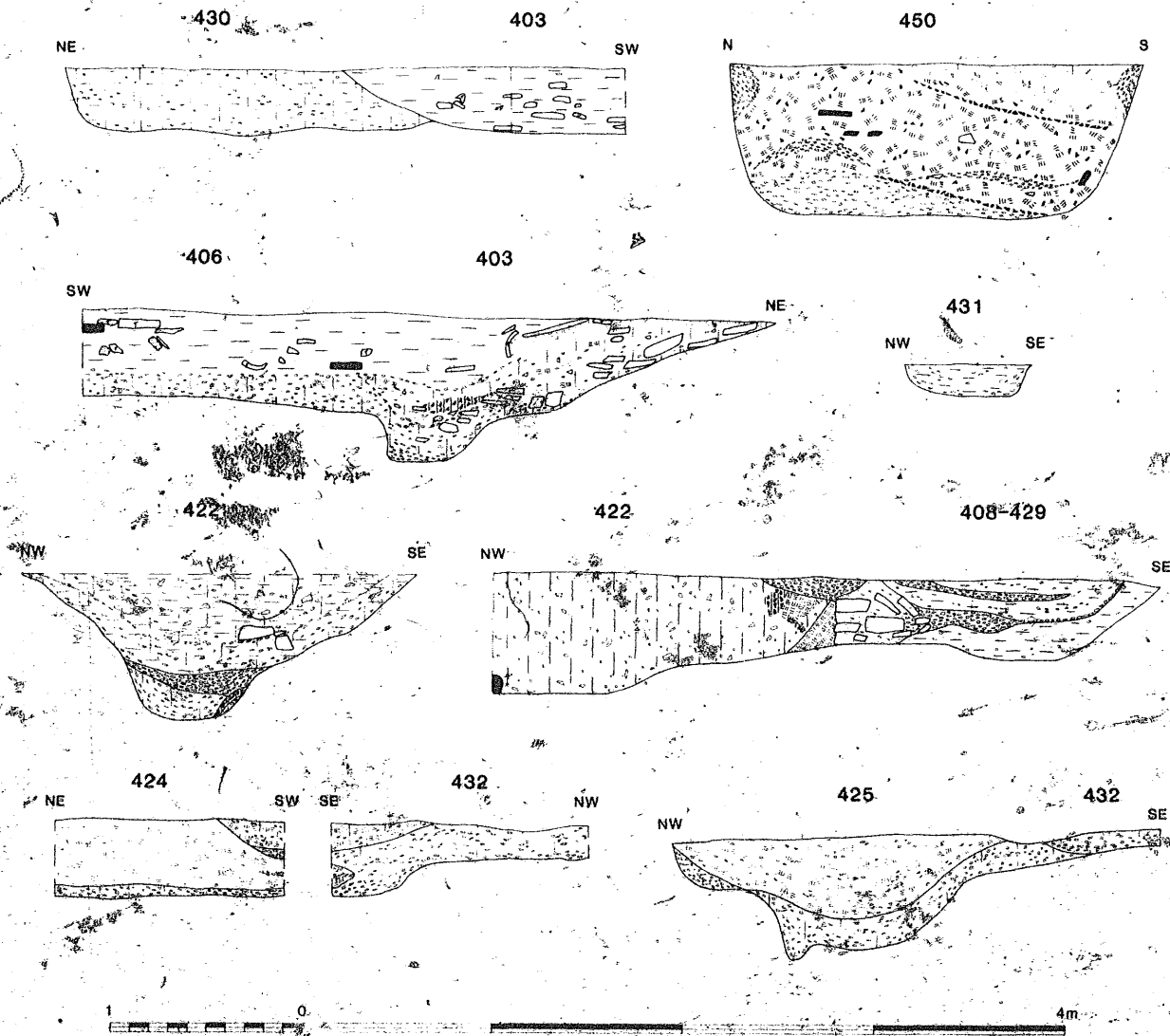
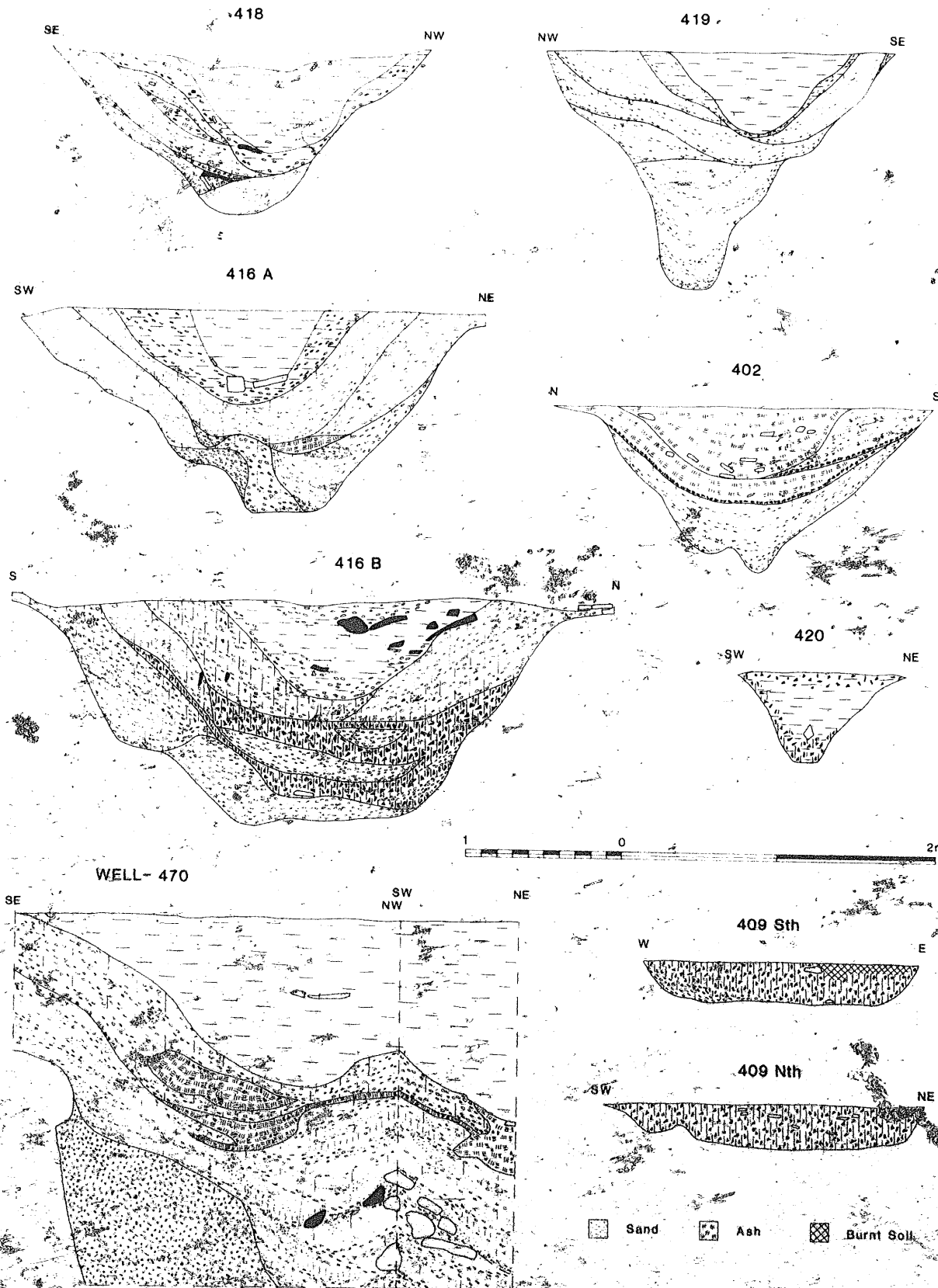


Figure 133. Western enclosures: sections of small enclosures W of villa



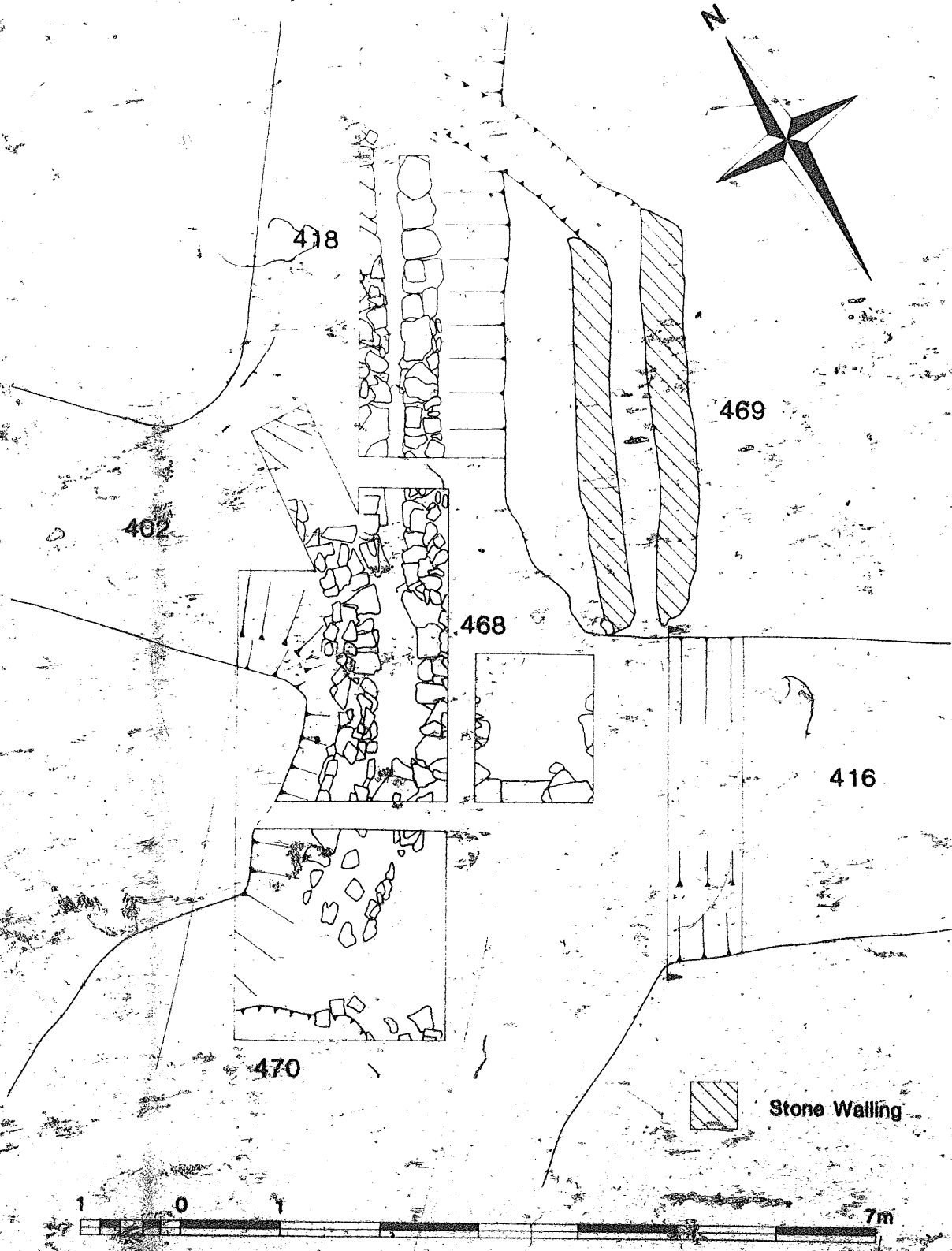


Figure 135 Western enclosures: plan of 'corndrier' 468 and culvert 469

4.F The Later Roman enclosures and droveways east of the villa

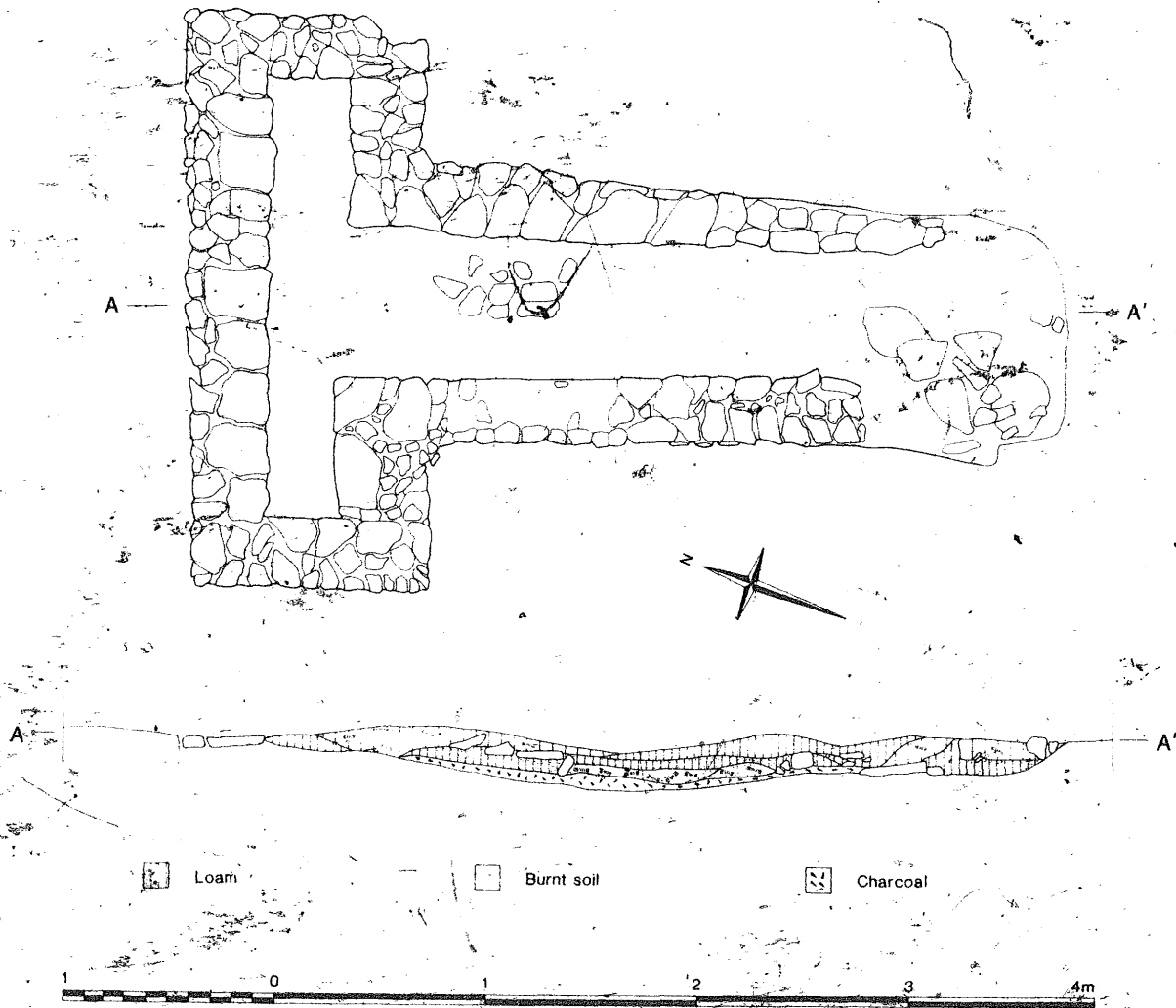


Figure 136 'Corndrier' 590: plan and section

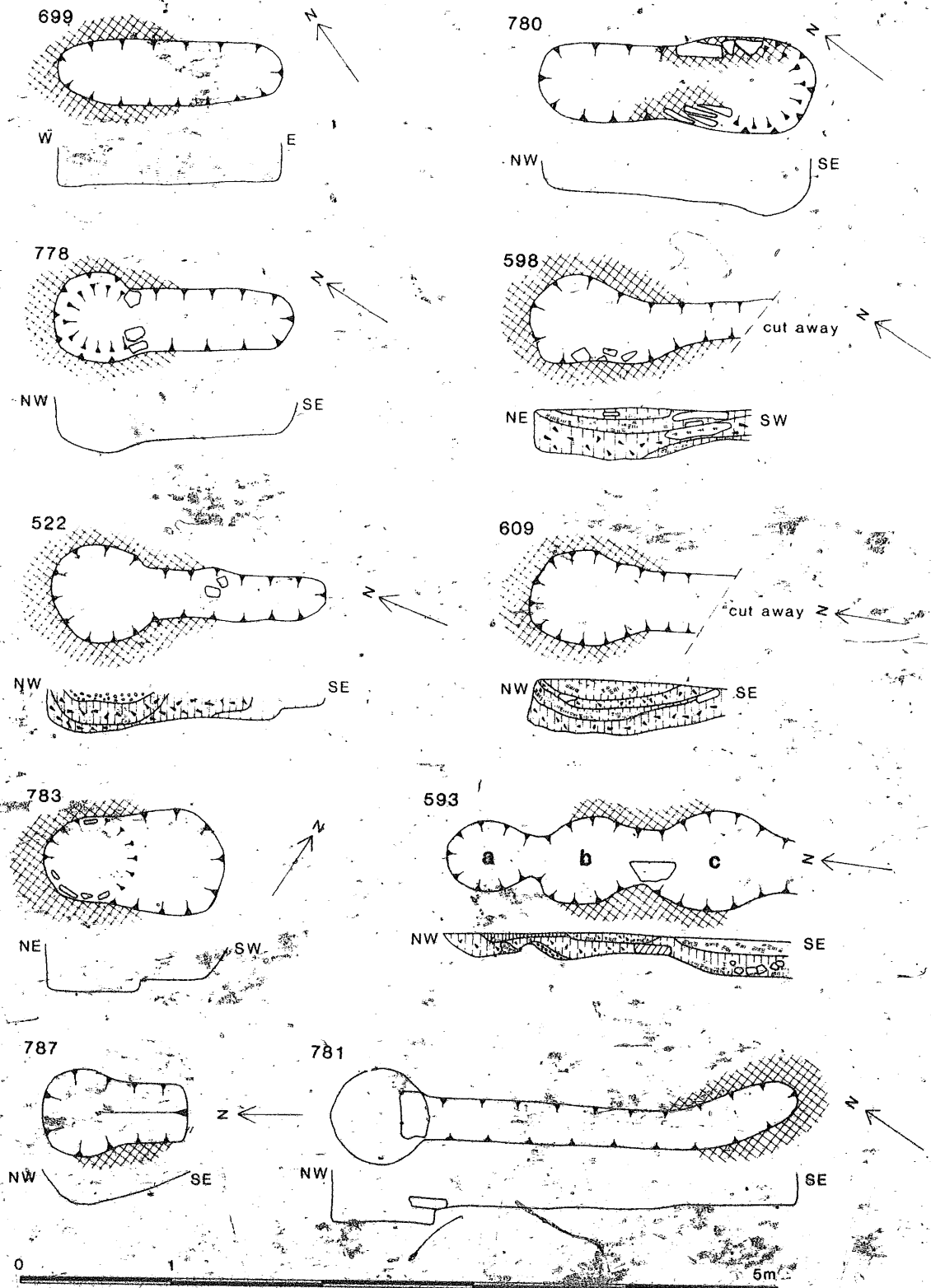


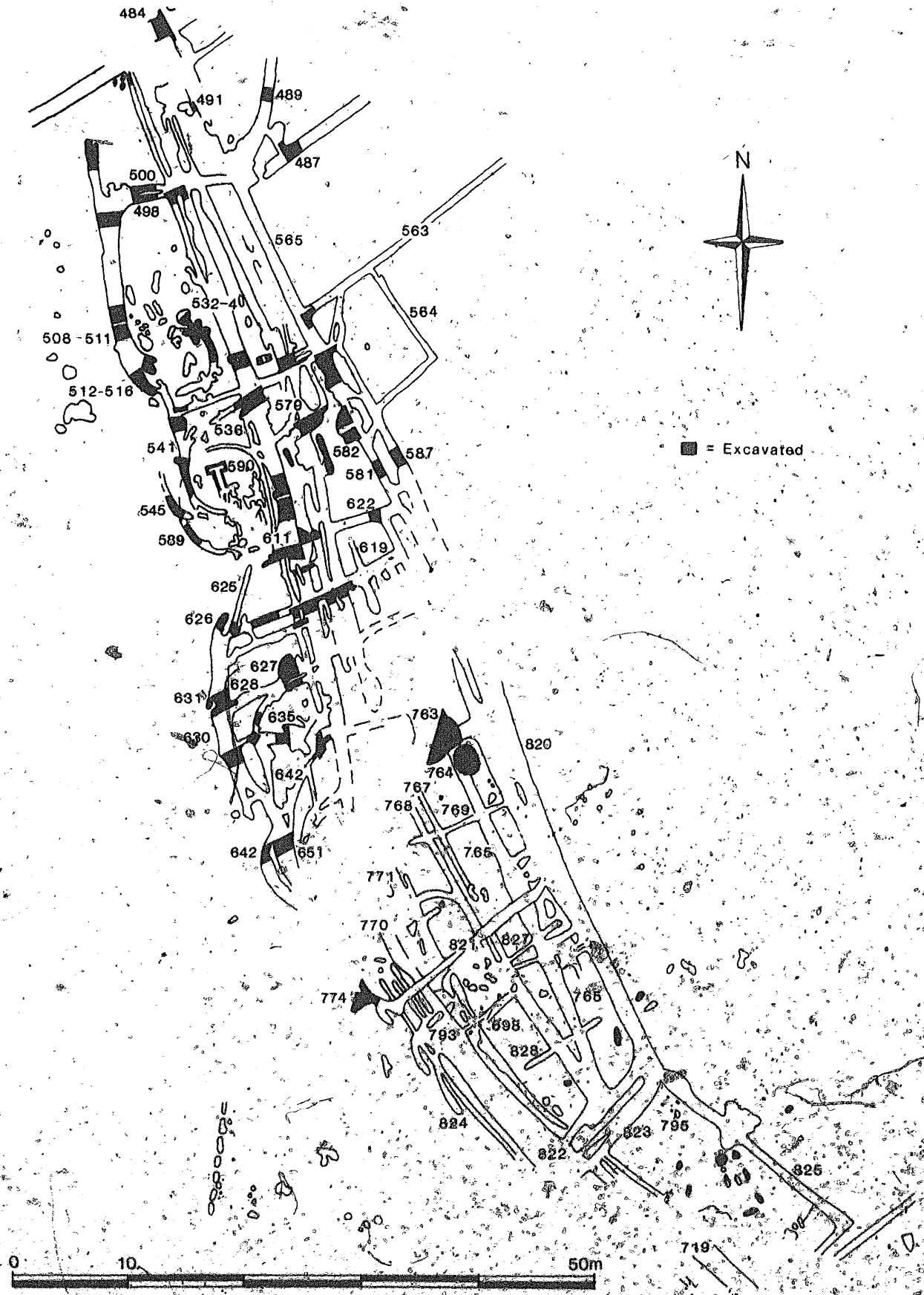
Figure 137 Late Roman ovens: plan and sections

Table 41 Ovens in the eastern enclosures giving type and dimensions in metres

Context	Type	Orientation	Length	Diameter/Breadth		Depth		Fiche Plan	Comments
				Head	Tail	Head	Tail		
7491								10	
492	Oval	—	0.75	0.61	—	0.15	—	10	
494	Oval	—	0.86	0.56	—	0.15	—	10	
7508	Circular	—	—	0.65	—	—	—	10	
521	Tadpole	NNW-SSE	2.01	0.74	0.30	0.20	—	10	Stone lining in head
522	Tadpole	NNW-SSE	1.73	0.65	0.30	0.29	0.15	10	Shelf at end of tail
523	?Tadpole	NNW-SSE	1.68	0.58	0.19	0.19	0.5	10	?Oven 0.60 m diameter cut into gully?
530	Circular	—	—	0.65	—	0.20	—	10	
591	Tadpole	E-W	1.30	0.65	—	0.22	—	24	Tail merged with 592.
592	Tadpole	S-N	1.22	0.56	0.14	0.11	—	24	Not reddened
593	Tadpole ?multiple	N-S	3.35	0.71	—	0.25	—	24	?Several ovens?
			0.49	—	0.17	—	—		a)
			0.61	—	0.19	—	—		b)
			1.22	0.71	0.41	0.25	0.25		c)
594	?Tadpole	NW-SE	1.30	0.65	—	0.23	—	24	
595	Tadpole	NNW-SSE	1.91	0.61	0.33	0.27	0.15	24	Stone lining at neck. Rebut.
596	Tadpole		1.50	0.68	0.28	0.34	0.23	24	
597	Tadpole	NW-SE	1.22	0.75	?	0.30	?	24	
598	Tadpole	NE-SW	1.53+	0.61	0.25	0.35	0.19	24	Stone lining in head
599	Tadpole	WNW-ESE	0.92+	0.56	0.22	0.18	0.11	24	
601	Tadpole	NNW-SSE	1.60	0.53	0.20	0.18	—	24	Short tail
603	Tadpole	NNW-SSE	1.37	0.71	0.30	0.23	0.15	24	
605	Tadpole	N-S	1.37	0.61	0.30	0.33	—	24	Stones narrowing neck
609	Tadpole	NNW-SSE	1.35	0.63	0.37	0.36	0.22	24	
632	Tadpole	E-W	1.37	0.61	0.45	0.30	0.18	24	Not reddened. Burnt fill.
641	Oval	—	1.42	0.54	—	0.21	—	24	Not reddened. Black fill.
647	Circular	—	0.74	0.63	—	0.22	—	38	Circular slate in bottom, stone lining on sides.
680	Linear	E-W	1.52	0.43	—	0.25	0.13	39	Reddened at west end.

Ovens in the eastern enclosures giving type and dimensions in metres (Table 41 continued)

Context	Type	Orientation	Length	Diameter/ Breadth		Depth		Fiche Plan	Comments
				Head	Tail	Head	Tail		
681	Tadpole	NW-SE	1.91	0.30	0.50	0.25	0.20	39	
682	Linear	N-S	2.67	0.38	—	0.15	0.5	39	Not reddened. ?Two ovens.
727	Oval	NW-SE	1.37	0.61	—	?	—	55	Not reddened. Burnt fill.
728	Oval	NW-SE	1.37	0.75	—	?	—	55	Not reddened. Burnt fill.
772	Tadpole	SW-NE	1.22	0.45	0.19	0.20	0.13	39	
778	Tadpole	NW-SE	1.66	0.58	0.40	0.35	?	39	Stones narrowing neck to 0.15m.
779	Circular	—	—	0.38	—	0.10	—	39	
780	Tadpole	E-W	1.85	0.61	0.48	0.23	—	39	Stones narrowing neck to 0.33m.
781	Dumb-bell ?2 ovens	E-W	3.15	63	—	0.35	—	53	a) circular
				28	—	?	—		b) linear
783	?Dumb-bell	NE-SW	1.20	0.61	0.71	0.33	0.24	39	Stones lining sides of chamber
786	Tadpole	E-W	1.91	0.49	0.30	0.15	0.20	39	Sub- rectangular chamber
787	Tadpole	NW-SE	0.99	0.58	0.40	0.23	0.24	39	
814	Linear	WNW-ESE	c 1.00	c 40	Not excavated			54	
853	Tadpole	NW-SE	1.68	0.66	0.33	0.15	0.6	91	Stones on chamber floor.
860	Oval	N-S	0.76	0.68	—	0.30	—	91	Stones lining sides.
884	Oval (or tadpole)	E-W	0.91min	0.62	—	?	—	77	
913	Linear	W-E	c 1.50	c 75	—	?	—	91	



Fiche 1 Figure 138 Plan of northern enclosure group showing excavated trenches and drawn sections

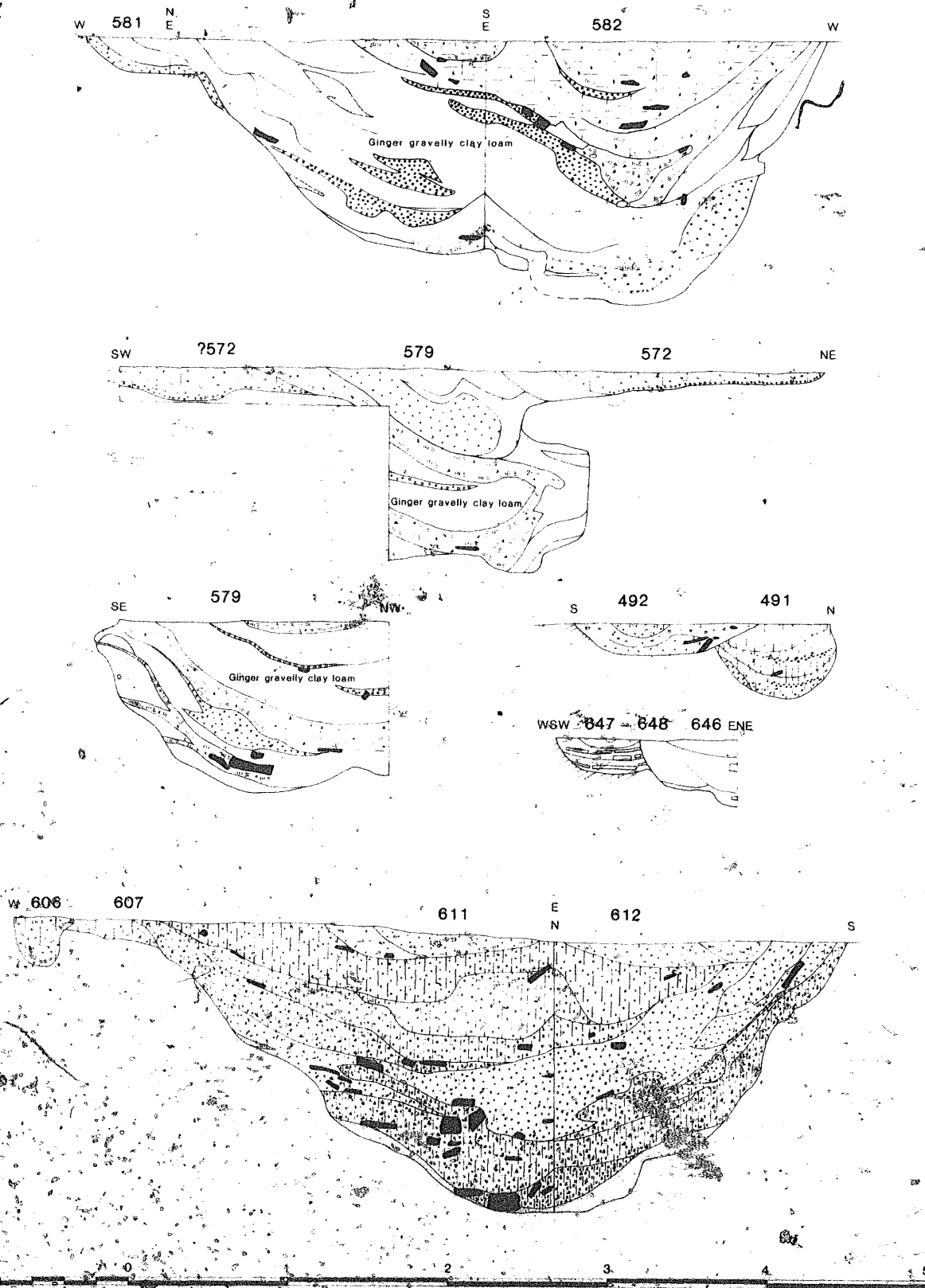


Figure 139 Northern enclosure group: sections of large pits and ovens

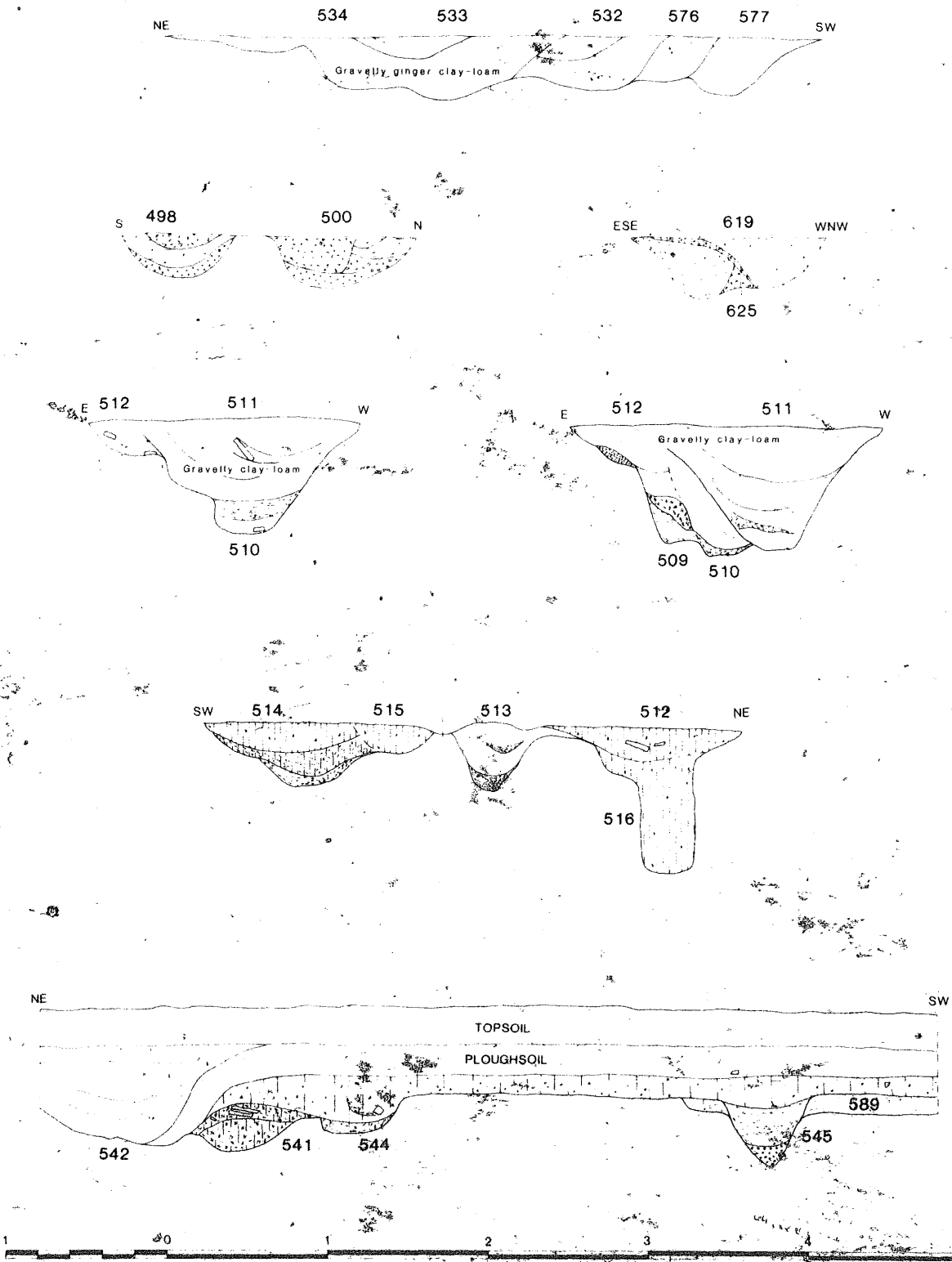


Figure 140 Northern enclosures: sections of ditches

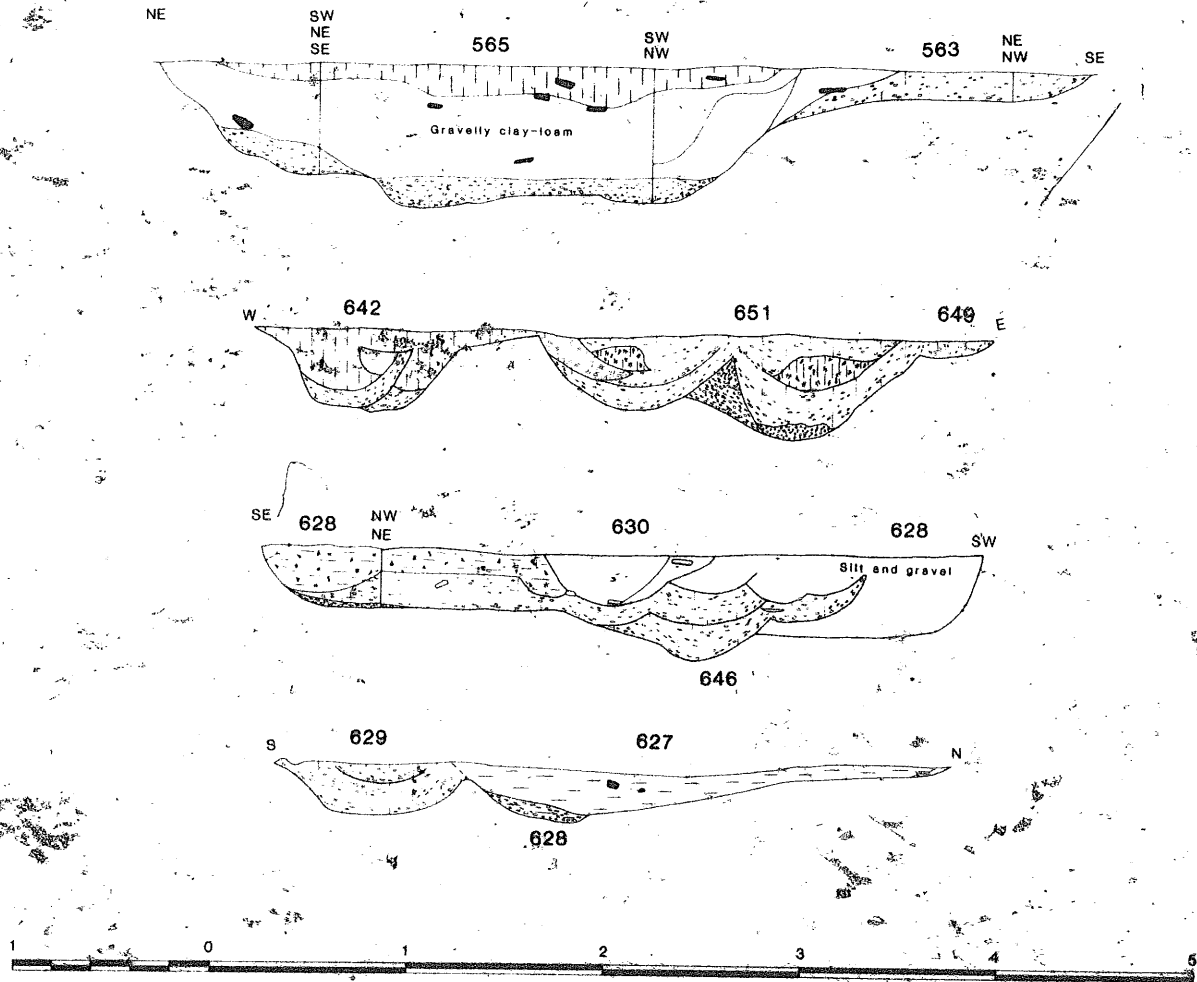


Figure 141 Northern enclosures: sections of ditches and silt-filled pits

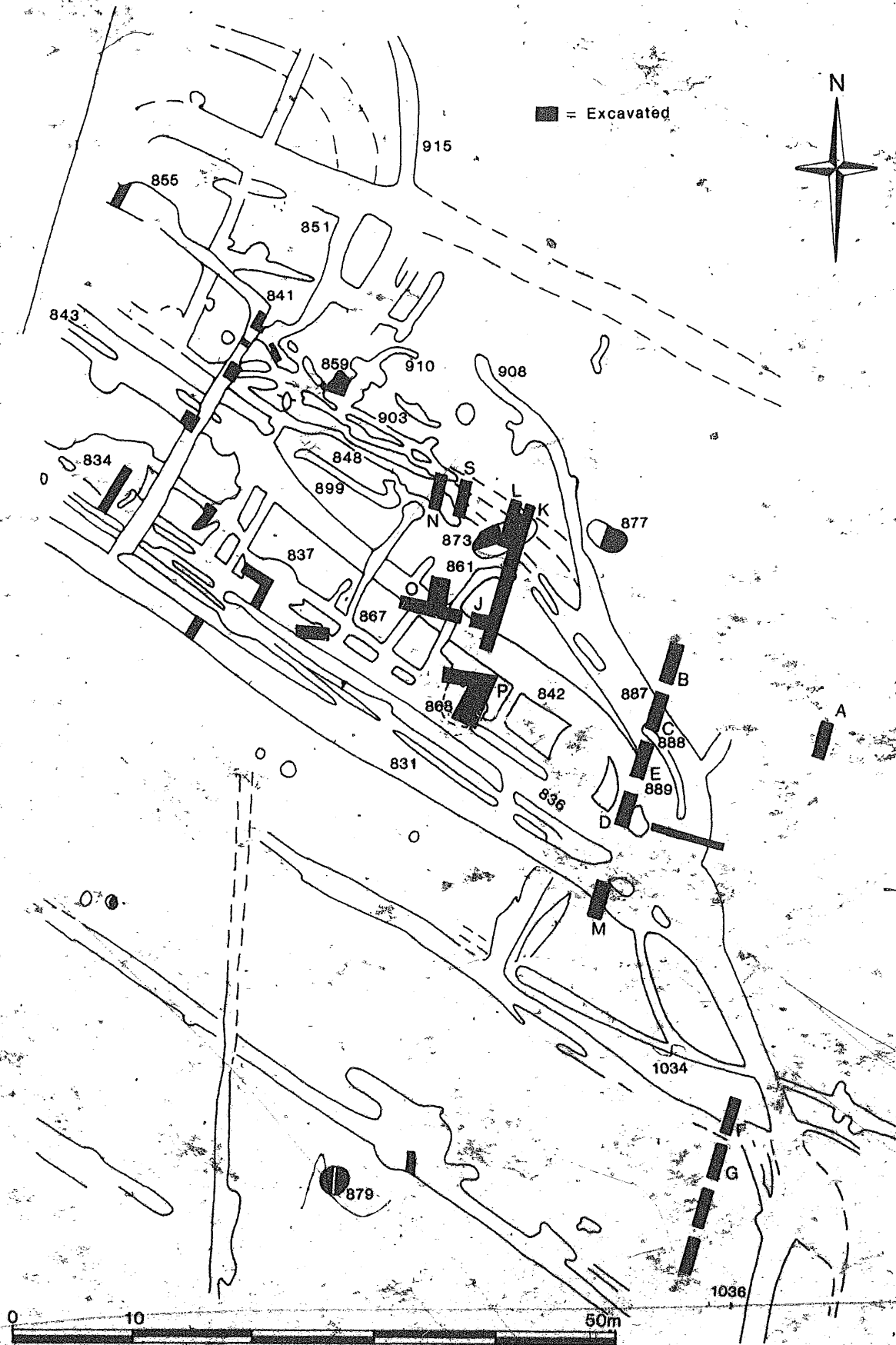


Figure 142 Plan of southern enclosure group showing excavated trenches and drawn sections

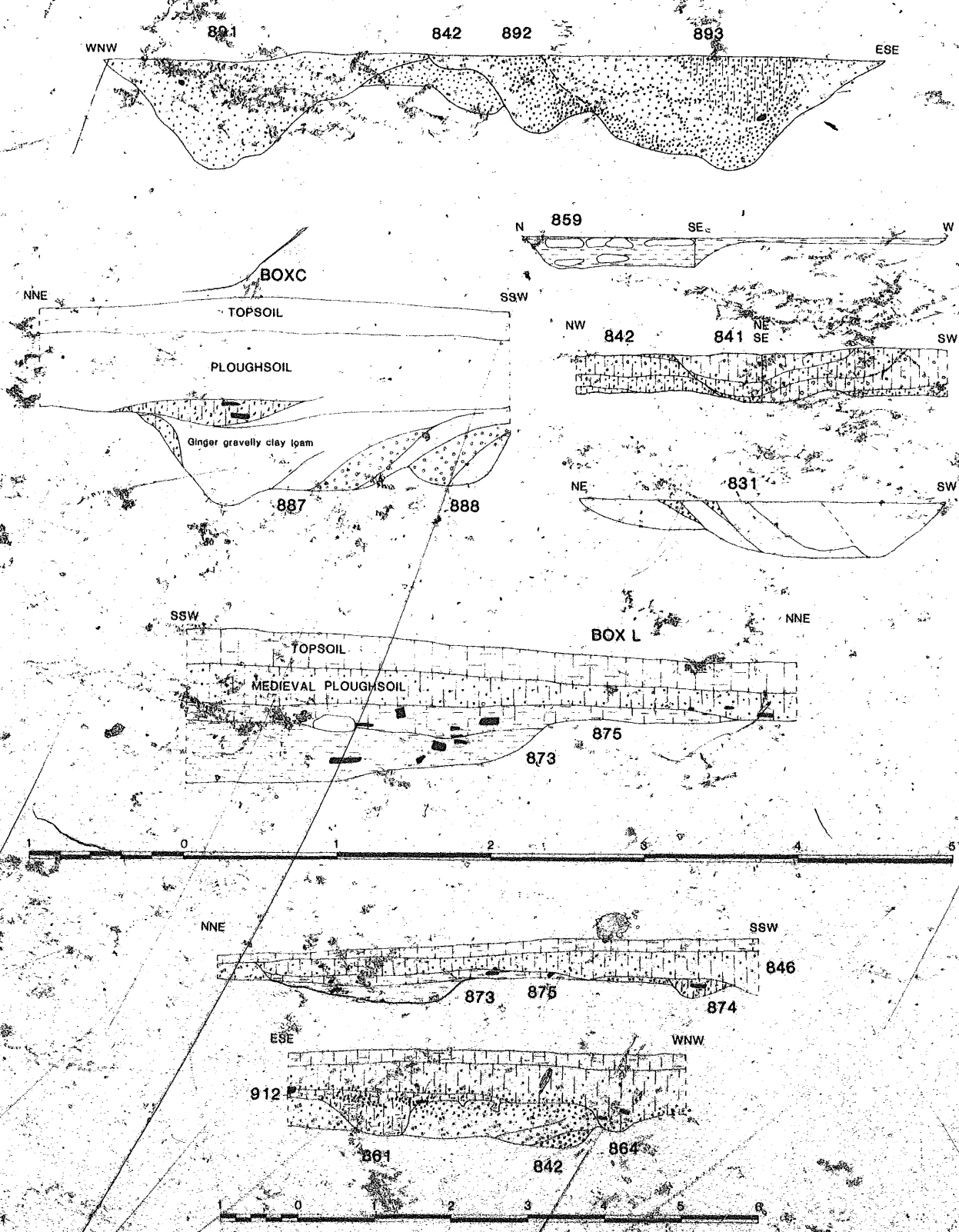


Figure 143 Southern enclosures: sections of ditches and silt-filled pits

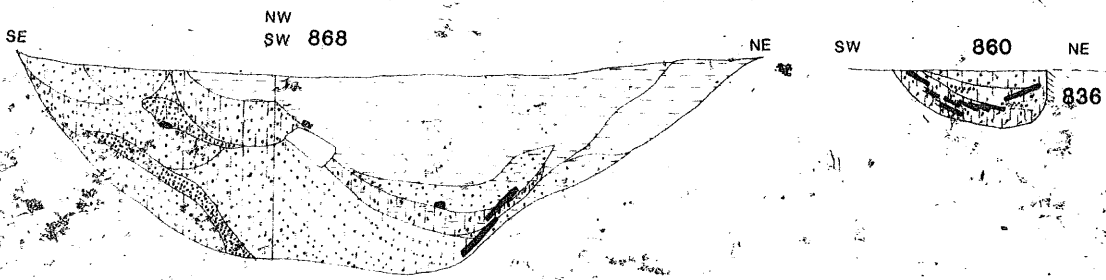


Figure 144 Southern enclosures: sections of large pits and ovens

4.F.8 The gravel-pit area

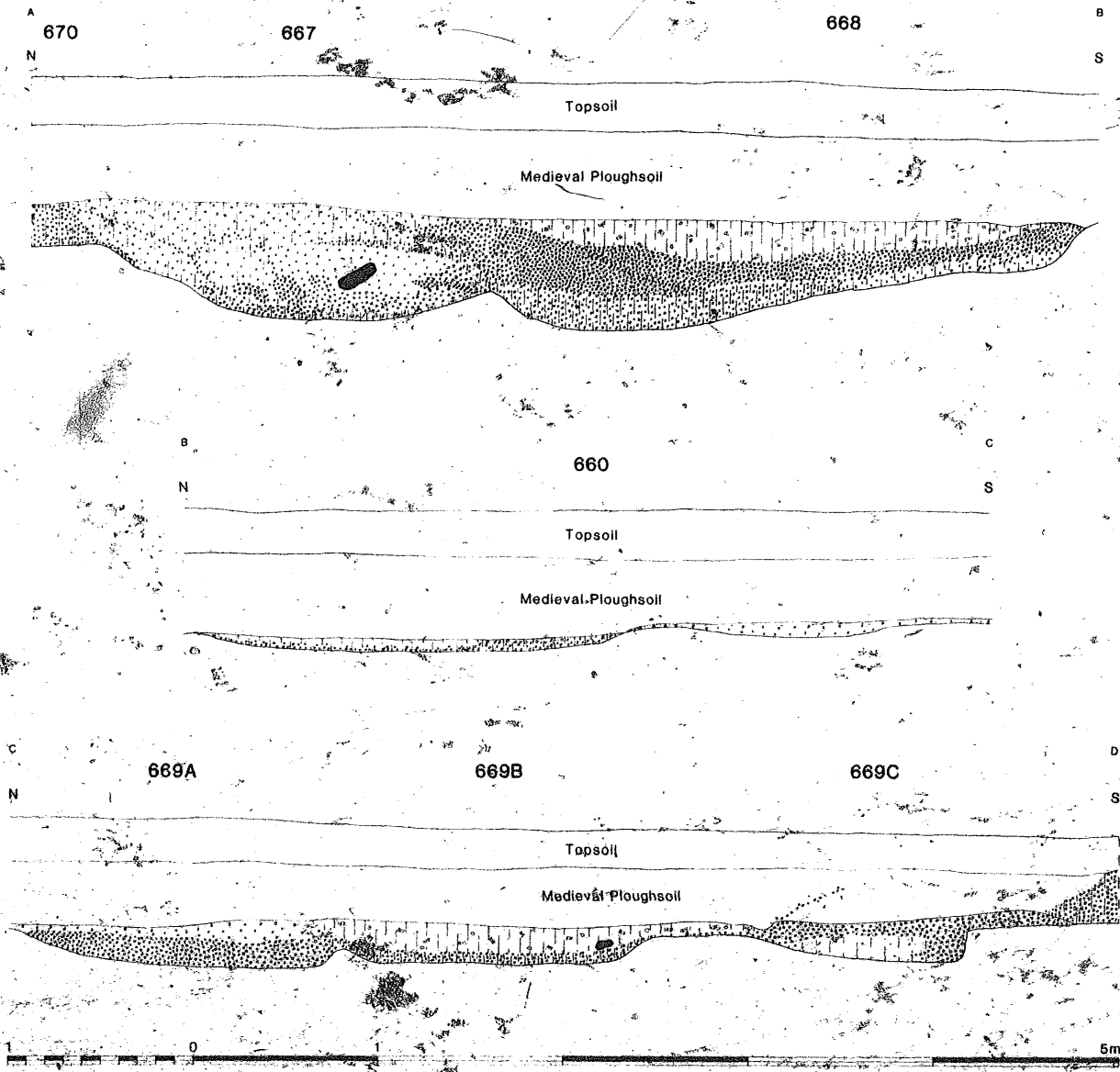


Figure 145 Roman gravel-pit 660: section