

APPENDIX 2: THE IRON OBJECTS

Patrick Ottaway

Tools and Implements	
1	<p>A tanged punch (Figs 81, 106), consisting of a tapering tang and working arm. The latter has a rounded tip. L: 128 mm; W: 11 mm Site 2, 46, spread of stones, Medieval?, OR 159</p>
2	<p>A wool-comb tooth, with a rounded cross-section and a missing shank tip. L: 70 mm; W: 2 mm Site 2, 123, fill of posthole 128, Structure X, Early medieval, OR 34</p>
3	<p>A wool-comb tooth, with a rounded cross-section and a missing head. L: 70 mm; W: 2 mm Site 2, 359, first churchyard boundary bank, Eleventh/twelfth century, OR 1278</p>
4	<p>A small drawknife (Figs 81, 106), consisting of a blade with a tang projecting upwards at each end, now incomplete. L: 59 mm; W: 16 mm; Th: 8 mm Site 2, 355, churchyard boundary bank, Eleventh/twelfth century, OR 1150</p>
5	<p>A small auger or spoon bit (Figs 81, 106), consisting of a slim blade with a missing tip and a short triangular tang. L: 96 mm; W: 15 mm; Th: 6 mm Site 2, 36, hillwash, Post-medieval, OR 1818</p>
6	<p>A pruning hook with a C-shaped blade (Figs 81, 106). The cutting edge is on the concave side and the tang is incomplete. L: 46 mm; W: 10 mm Site 2, 310, rubble spread, Eleventh/twelfth century, OR 997</p>
7	<p>Two fragments of knives found in association. The first consists of a short piece of blade and bolster. The second is a blade with a convex back, straight cutting edge, and a missing tip; only a fragment of the tang survives. i) L: 47 mm; W: 14 mm ii) L: 52 mm; W: 20 mm; Th: 5 mm Site 1, 52, make-up layer?, Early medieval?, OR 181</p>
8	<p>A knife fragment (Figs 81, 106), consisting of a bolster and scale tang with five non-ferrous rivets. The blade is largely missing. L: 115 mm; W: 12 mm Site 1, 21, demolition layer, Medieval/Post-medieval, OR 100</p>
9	<p>A knife fragment, consisting of a blade and incomplete tang. The object is very corroded. L: 40 mm; W: 14 mm; Th: 5 mm Site 2, 151, churchyard boundary bank, Eleventh/twelfth century, OR 376</p>
10	<p>A blade fragment. L: 39 mm; W: 10 mm; Th: 3 mm Site 2, 534, churchyard boundary bank, Eleventh/twelfth century, OR 1380a</p>
11	<p>A knife fragment (Figs 81, 106), consisting of a blade, broken at the junction with the tang. The back is straight before it curves down towards a missing tip. The cutting edge is S-shaped. L: 54 mm; W: 16 mm; Th: 6 mm Site 2, 178, spread of stones, Early medieval/Medieval, OR 618</p>
12	<p>A knife fragment, consisting of a blade with a straight back, which curves towards a missing tip. The cutting edge is corroded and the tang is incomplete. L: 42 mm; L (blade): 32 mm; W: 14 mm; Th: 6 mm Site 2, 1235, lowest hillwash, Early medieval/Medieval, OR 2213</p>
13	<p>A blade fragment. L: 34 mm; W: 18 mm; Th: 4 mm Site 2, 1269, layer, Medieval, OR 2164</p>
14	<p>A curved blade fragment in a very corroded state. L: 84 mm; W: 14 mm; Th: 4 mm Site 2, 26, Topsoil, OR 1206a</p>
15	<p>A knife (Fig 106), consisting of a blade with a straight back, which curves down to the tip. The cutting edge is slightly concave and the tang is complete. L: 65 mm Site 2, 162, Unstratified, OR 622</p>

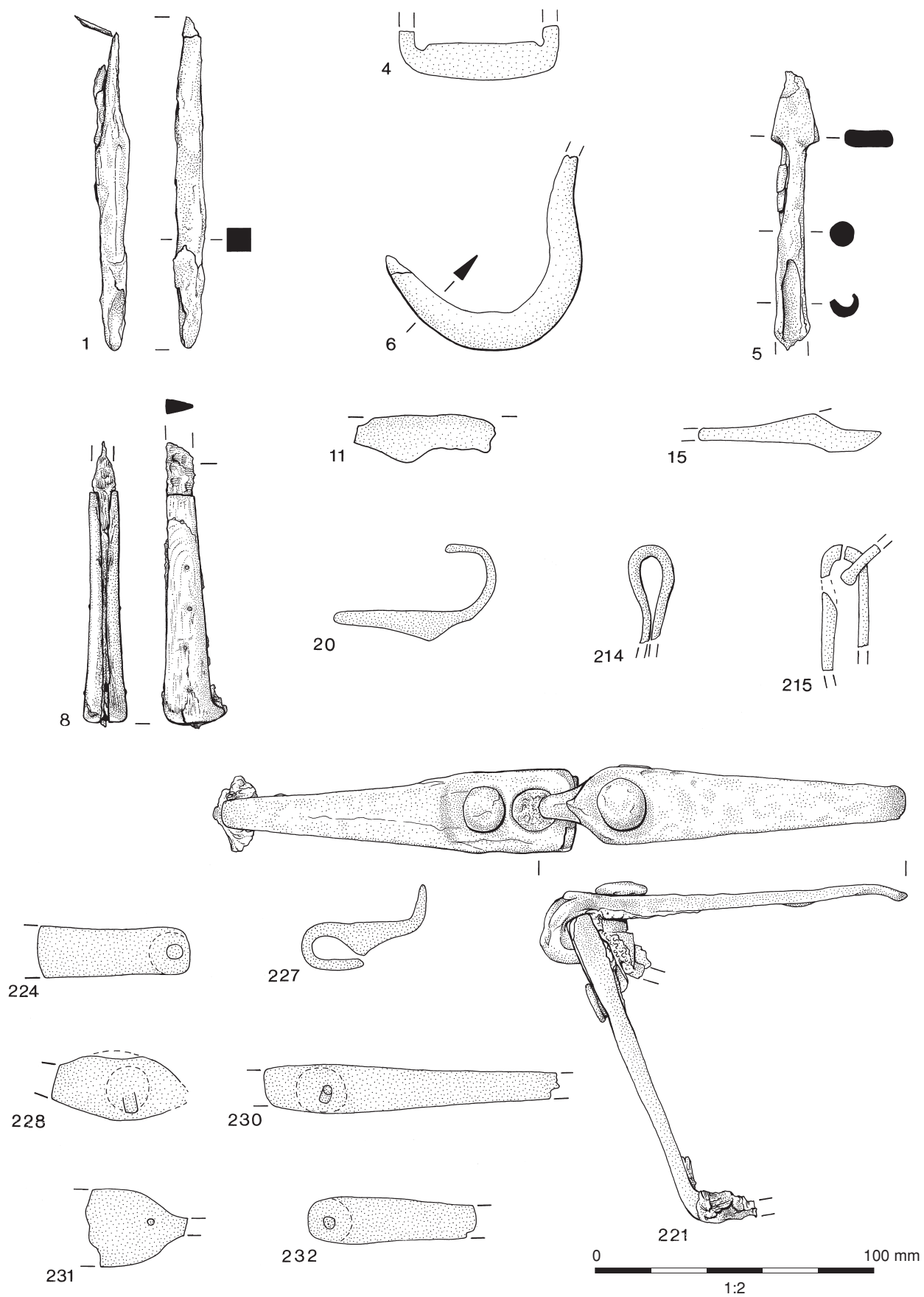


Figure 106: Iron 1

- | | |
|---|---|
| <p>16 A knife fragment, with part of the blade and tang surviving.
L: 38 mm; W: 17 mm
Site 2, 162, Unstratified, OR 1635a</p> <p>17 A fragment of a large knife blade, or possibly a T-shaped axe blade. The back is slightly concave while the cutting edge is slightly convex.
L: 68 mm; W: 25 mm; Th: 6 mm
Site 2, 162, Unstratified, OR 1635b</p> <p>18 A blade fragment.
L: 40 mm; W: 31 mm; Th: 12 mm
Site 2, 162, Unstratified, OR 2431a</p> <p>19 A razor, consisting of a non-ferrous case with iron strengthening, which curves towards one end. The blade, now incomplete, is hinged at the opposite end.
L (case): 135 mm; W (case): 20 mm; Th: 10 mm; L (blade): 55 mm; W (blade): 18 mm
Site 2, 28, churchyard boundary wall, Medieval, OR 2418</p> <p>20 A strike-a-light (Figs 81, 106), consisting of a slim striking plate with a curved arm at one end.
L: 60 mm; W (across arm): 34 mm; Th: 4 mm
Site 2, 310, rubble spread, Eleventh/twelfth century, OR 1002</p> <p>21 A candle-holder, consisting of an incomplete shank with a socket at one end.
L: 70 mm; L (socket): 20 mm; Diam: 25 mm
Site 2, 1016, demolition layer, Medieval/Post-medieval, OR 1909a</p> <p>22 A fragment of the rim of an iron vessel. It is roughly triangular in shape and has been thickened along the rim.
L: 40 mm; W: 30 mm; Th: 4 mm
Site 2, 162, Unstratified, OR 1815a</p> | <p>25 i) Shank only.
ii) Shank only.
i) L: 36 mm
ii) L: 32 mm
Site 1, 76, layer, Early medieval, OR 340</p> <p>26 Shank, incomplete.
L: 28 mm; W: 10 mm; Th: 5 mm
Site 1, 53, surface, Early Medieval, OR 173a</p> <p>27 Shank, tip missing.
L: 70 mm; W: 16 mm; Th: 5 mm
Site 1, 18, churchyard boundary wall?, Medieval, OR 83</p> <p>28 Three very corroded nails.
Site 1, 25, layer, Medieval/Post-medieval, OR 59</p> <p>29 i) Very corroded.
ii) Shank only.
i) L: 25 mm; W: 10 mm; Th: 5 mm
ii) L: 40 mm
Site 1, 40, demolition layer, Medieval/Post-medieval, OR 86a</p> <p>30 Shank, tip bent.
L: 47 mm; W: 9 mm; Th: 5 mm
Site 1, 13, garden soil, Post-medieval, OR 48a</p> <p>31 i) Shank only.
ii) Shank only.
iii) Shank only.
iv) Shank only.
i) L: 30 mm
ii) L: 30 mm
iii) L: 26 mm
iv) L: 25 mm
Site 2, 179, Disturbed Natural Subsoil, OR 961</p> |
|---|---|

Nails

The catalogue numbers have been given to the nails by their OR group rather than individually. All have roughly rounded, flat heads, and shanks of rectangular cross-section unless stated. Most were identified from X-ray.

- | | |
|---|--|
| <p>23 Very corroded, shank incomplete.
L: 33 mm; W: 10 mm; Th: 5 mm
Site 1, 34, Disturbed Natural Subsoil, OR 71</p> <p>24 i) Shank, tip missing.
ii) Shank, L-shaped.
iii) Shank only.
iv) Shank only.
Also three shank fragments.
i) L: 26 mm; W: 11 mm; Th: 5 mm
ii) L: 25 mm
iii) L: 93 mm; W: 10 mm
iv) L: 25 mm
Site 1, 55, fill of ditch 67, Early medieval, OR 189a</p> | <p>32 Shank only, L-shaped.
L: 30 mm
Site 2, 179, Disturbed Natural Subsoil, OR 1030</p> <p>33 Shank.
L: 34 mm
Site 2, 772, Disturbed Natural Subsoil, OR 1541</p> <p>34 i) Shank only.
ii) Shank only.
i) L: 33 mm
ii) L: 20 mm
Site 2, 595, cemetery level, Early medieval, OR 1374</p> <p>35 Complete length, wood remains.
L: 28 mm; W: 14 mm; Th: 5 mm
Site 2, 596, layer, Early medieval, OR 1379a</p> <p>36 i) Head only.
ii) Shank only.</p> |
|---|--|

	i) L:16 mm ii) L: 17 mm Site 2, 596, layer, Early medieval, OR 1479		L: 16 mm Site 2, 248, fill of grave 249, Early medieval, OR 798
37	i) Shank, largely missing. ii) Shank only. iii) Shank only. i) L: 11 mm; W: 17 mm; Th: 5 mm ii) L: 40 mm iii) L: 19 mm Site 2, 713, cemetery level, Early medieval, OR 1564	47	Shank, incomplete. L: 20 mm; W: 20 mm; Th: 4 mm Site 2, 292, fill of grave 293, Early medieval, OR 893
		48	Shank only. L: 25 mm Site 2, 342, cemetery level, Early medieval, OR 1228
38	i) Complete length, wood remains. ii) Shank, incomplete. iii) Shank, incomplete, with wood remains. iv) Shank, incomplete, with wood remains. v) Shank, largely missing. vi) Shank, largely missing. i) L: 46 mm; W: 24 mm; Th: 5 mm ii) L: 25 mm; W: 21 mm; Th: 5 mm iii) L: 26 mm; W: 17 mm; Th: 5 mm iv) L: 23 mm; W: 17 mm; Th: 5 mm v) L: 15 mm; W: 20 mm; Th: 5 mm vi) L: 17 mm; W: 10 mm; Th: 5 mm Site 2, 713, cemetery level, Early medieval, OR 1648a	49	i) Shank, tip missing, with wood remains. ii) Shank, L-shaped. i) L: 76 mm; W: 33 mm; Th: 6 mm ii) L: 38 mm Site 2, 342, cemetery level, Early medieval, OR 1293a
		50	Shank, tip missing. L: 120 mm; W: 28 mm; Th: 8 mm Site 2, 342, cemetery level, Early medieval, OR 1313
		51	Shank, incomplete, with wood remains. L: 22 mm; W: 28 mm; Th: 10 mm Site 2, 589, fill of grave 590, Early medieval, OR 1000
39	i) Shank only. ii) Shank only, with wood remains. i) L: 17 mm ii) L: 32 mm Site 2, 713, cemetery level, Early medieval, OR 1687	52	i) Complete length, with wood remains. ii) Complete length, with wood remains. iii) Shank, largely missing. iv) Shank only, wood remains. v) Shank only, wood remains. i) L: 68 mm; W: 23 mm; Th: 7 mm ii) L: 67 mm; W: 30 mm; Th: 6 mm iii) L: 20 mm; W: 26 mm; Th: 6 mm iv) L: 53 mm v) L: 48 mm Site 2, 603, fill of grave 604, Early medieval, OR 1394
40	i) Shank, largely missing, with wood remains. ii) Shank only, with wood remains. i) L: 18 mm; W: 18 mm; Th: 5 mm ii) L: 33 mm Site 2, 713, cemetery level, Early medieval, OR 1718a		
41	Shank only, with wood remains. L: 30 mm Site 2, 187, fill of grave 188, Early medieval, OR 495a	53	i) Shank, incomplete. ii) Shank only. i) L: 27 mm; W: 11 mm; Th: 5 mm ii) L: 24 mm Site 2, 609, fill of grave 610, Early medieval, OR 1407
42	Very corroded. Site 2, 187, fill of grave 188, Early medieval, OR 521		
43	Shank only, curved. L: 30 mm Site 2, 189, fill of grave 190, Early medieval, OR 498a	54	Shank, incomplete. L: 30 mm; W: 24 mm; Th: 7 mm Site 2, 639, fill of grave 640, Early medieval, OR 1466
44	Head only. L: 20 mm Site 2, 189, fill of grave 190, Early medieval, OR 508	55	Shank, incomplete. L: 39 mm; W: 23 mm; Th: 5 mm Site 2, 665, cemetery level, Early medieval, OR 1439
45	Complete length. L: 65 mm; W: 22 mm; Th: 5 mm Site 2, 199, fill of grave 200, Early medieval, OR 524	56	Shank only. L: 12 mm Site 2, 665, cemetery level, Early medieval, OR 1459
46	Shank only.	57	Shank, with curled-over tip. L: 56 mm; W: 8 mm Site 2, 665, cemetery level, Early medieval, OR 1621

58	<p>i) Shank. ii) Shank. i) L: 42 mm ii) L: 35 mm Site 2, 837, fill of grave 836, Early medieval, OR 1599</p>	70	<p>Shank, incomplete. L: 15 mm; W: 15 mm; Th: 6 mm Site 2, 1301, fill of posthole 1300, Early medieval, OR 2221</p>
59	<p>Shank, incomplete, with wood remains. L: 23 mm; W: 15 mm; Th: 4 mm Site 2, 861, fill of grave 860, Early medieval, OR 1614a</p>	71	<p>Domed head, shank tip missing, plated with tin. L: 26 mm; W: 15 mm; Th: 5 mm Site 2, 96, churchyard boundary bank, Eleventh/twelfth century, OR 273</p>
60	<p>Shank, incomplete, with wood remains. L: 24 mm; W: 18 mm; Th: 5 mm Site 2, 887, fill of grave 888, Early medieval, OR 1625</p>	72	<p>Shank, largely missing. L: 15 mm; W: 23 mm Site 2, 144, churchyard boundary bank, Eleventh/twelfth century, OR 433</p>
61	<p>i) Shank, incomplete. ii) Shank, largely missing, with wood remains. i) L: 26 mm; W: 19 mm; Th: 5 mm ii) L: 17 mm; W: 18 mm; Th: 5 mm Site 2, 887, fill of grave 888, Early medieval, OR 1673</p>	73	<p>Shank, curved. L: 30 mm; Th: 8 mm Site 2, 172, occupation layer, Structure Y, Early medieval, OR 573</p>
62	<p>i) Complete length, with wood remains. ii) Shank, largely missing. iii) Shank only, with wood remains. iv) Shank only. i) L: 30 mm; W: 15 mm; Th: 5 mm ii) L: 16 mm; W: 16 mm; Th: 5 mm iii) L: 27 mm iv) L: 29 mm Site 2, 899, fill of grave 898, Early medieval, OR 1711a</p>	74	<p>Shank, incomplete. L: 45 mm; W: 25 mm; Th: 6 mm Site 2, 172, occupation layer, Structure Y, Early medieval, OR 711</p>
63	<p>Shank, incomplete. L: 31 mm; W: 27 mm; Th: 10 mm Site 2, 911, fill of grave 912, Early medieval, OR 1694</p>	75	<p>Shank only. L: 68 mm; Th: 7 mm Site 2, 172, occupation layer, Structure Y, Early medieval, OR 801</p>
64	<p>Unusually thin head, with wood remains. L: 80 mm; W: 29 mm; Th: 6 mm Site 2, 921, fill of grave 922, Early medieval, OR 1696a</p>	76	<p>Domed head, curved shank, tip missing. L: 25 mm; W: 8 mm; Th: 2 mm Site 2, 172, occupation layer, Structure Y, Early medieval, OR 836</p>
65	<p>Shank, tip missing. L: 59 mm; W: 25 mm; Th: 5 mm Site 2, 941, fill of grave 940, Early medieval, OR 1725a</p>	77	<p>Complete length. L: 22 mm; W: 15 mm; Th: 4 mm Site 2, 172, occupation layer, Structure Y, Early medieval, OR 845</p>
66	<p>Shank, incomplete, with wood remains. L: 25 mm; W: 19 mm; Th: 5 mm Site 2, 945, fill of grave 944, Early medieval, OR 1719a</p>	78	<p>Shank only. L: 12 mm Site 2, 172, occupation layer, Structure Y, Early medieval, OR 860</p>
67	<p>Shank, incomplete. L: 21 mm; W: 25 mm; Th: 5 mm Site 2, 963, fill of grave 964 Early medieval, OR 1765a</p>	79	<p>Complete length. L: 66 mm; W: 23 mm; Th: 5 mm Site 2, 261, metallated surface, Early medieval, OR 1149</p>
68	<p>Shank, tip missing. L: 40 mm; W: 20 mm; Th: 6 mm Site 2, 1123, fill of grave 1124, Early medieval, OR 1879</p>	80	<p>Shank, incomplete. L: 34 mm; W: 24 mm; Th: 6 mm Site 2, 323, fill of churchyard boundary ditch, Eleventh/twelfth century, OR 1156</p>
69	<p>Shank, incomplete, with wood remains. L: 27 mm; W: 11 mm; Th: 5 mm Site 2, 959, fill of feature 958, Early medieval, OR 1746</p>	81	<p>Shank, incomplete. L: 37 mm; W: 28 mm; Th: 10 mm Site 2, 355, churchyard boundary bank, Eleventh/twelfth century, OR 1183</p>

82	<p>i) Complete length. ii) Shank. i) L: 97 mm; W: 17 mm; Th: 8 mm ii) L: 50 mm Site 2, 359, churchyard boundary bank, Eleventh/twelfth century, OR 1205</p>	93	<p>Shank fragment. L: 19 mm Site 2, 101, stone spread, Early medieval/Medieval, OR 548</p>
83	<p>Very corroded. Site 2, 359, churchyard boundary bank, Eleventh/twelfth century, OR 1301</p>	94	<p>Complete length. L: 48 mm; W: 26 mm; Th: 5 mm Site 2, 170, fill of churchyard boundary ditch 215, Medieval, OR 991</p>
84	<p>Shank only. L: 42 mm Site 2, 378, churchyard boundary bank, Eleventh/twelfth century, OR 1276</p>	95	<p>Complete length. L: 37 mm; W: 15 mm; Th: 5 mm Site 2, 316, fill of churchyard boundary ditch 215, Medieval, OR 1092</p>
85	<p>Shank, incomplete. L: 16 mm; W: 23 mm; Th: 5 mm Site 2, 1322, metallated surface, Early medieval/Medieval, OR 2299</p>	96	<p>Shank, tip missing. L: 48 mm; W: 15 mm; Th: 6 mm Site 2, 1197, stone spread, Early medieval/Medieval, OR 2091a</p>
86	<p>Shank, tip missing. L: 52 mm; W: 31 mm; Th: 5 mm Site 2, 1331, churchyard boundary bank, Eleventh/twelfth century, OR 2318</p>	97	<p>Shank, with wood adhering. L: 45 mm Site 2, 1250, layer, Early medieval/Medieval, OR 2063</p>
87	<p>Shank only. L: 40 mm Site 2, 1235, lowest hillwash, Early medieval/Medieval, OR 2102</p>	98	<p>Shank only. L: 15 mm Site 2, 1274, spread of rubble, Early medieval/Medieval, OR 2419</p>
88	<p>Complete length. L: 70 mm; W: 16 mm; Th: 6 mm Site 2, 1235, lowest hillwash, Early medieval/Medieval, OR 2129</p>	99	<p>Complete length, with a stepped head. L: 44 mm; W: 6 mm; Th: 5 mm Site 2, 1437, fill of churchyard boundary ditch 215, Medieval, OR 2394</p>
89	<p>i) Shank, tip missing. ii) Shank, incomplete. i) L: 53 mm; W: 13 mm; Th: 5 mm ii) L: 22 mm; W: 14 mm Site 2, 1235, lowest hillwash, Early medieval/Medieval, OR 2155</p>	100	<p>Shank only. L: 45 mm Site 2, 310, rubble spread, Eleventh/twelfth century, OR 1017</p>
90	<p>Shank, curved, tip missing. L: 34 mm; W: 14 mm; Th: 4 mm Site 2, 1235, lowest hillwash, Early medieval/Medieval, OR 2174</p>	101	<p>Shank, curved, tip missing. L: 40 mm; W: 17 mm; Th: 5 mm Site 2, 310, rubble spread, Eleventh/twelfth century, OR 1038</p>
91	<p>Complete length. L: 36 mm; W: 5 mm; Th: 3 mm Site 2, 1235, lowest hillwash, Early medieval/Medieval, OR 2214</p>	102	<p>i) Shank only. ii) Shank only. i) L: 45 mm ii) L: 27 mm Site 2, 1390, surface, Medieval, OR 2379</p>
92	<p>Head only. L: 12 mm Site 2, 1235, lowest hillwash, Early medieval/Medieval, OR 2373</p>	103	<p>i) Shank only. ii) Shank only. i) L: 48 mm ii) L: 20 mm Site 2, 1421, fill of ditch 1438, Medieval, OR 2505</p>
		104	<p>Head only. L: 11 mm Site 2, 28, churchyard boundary wall, Medieval, OR 971</p>

105	i) Complete length, shank curved into U-shape. ii) Shank curved, tip missing. i) L: 58 mm ii) L: 32 mm; W: 12 mm; Th: 5 mm Site 2, 28, churchyard boundary wall, Medieval, OR 1956	i) L: 24 mm; W: 12 mm; Th: 5 mm ii) L: 42 mm; W: 7 mm; Th: 5 mm Site 2, 45, metallated surface, Medieval, OR 2070
106	Shank only. L: 30 mm Site 2, 324, churchyard boundary wall, Medieval, OR 1041a	117 Shank only. L: 29 mm Site 2, 1269, layer, Medieval, OR 2145
107	i) Shank only. ii) Shank only. iii) Shank only, L-shaped. i) L: 56 mm ii) L: 47 mm iii) L: 32 mm Site 2, 324, churchyard boundary wall, Medieval, OR 1094	118 Shank only. L: 47 mm Site 2, 1269, layer, Medieval, OR 2151 119 Very corroded, with a domed head. L: 27 mm; W: 15 mm; Th: 3 mm Site 2, 1269, layer, Medieval, OR 2153a
108	Shank only. L: 38 mm Site 2, 337, fill of pit 336, Medieval, OR 956	120 Shank only. L: 20 mm Site 2, 1269, layer, Medieval, OR 2262 121 Shank. L: 34 mm Site 2, 1269, layer, Medieval, OR 2276
109	Very corroded, the shank bent over at the head. L: 65 mm Site 2, 47, wall, Medieval, OR 110	122 Shank, tip missing. L: 59 mm; W: 16 mm; Th: 6 mm Site 2, 1269, layer, Medieval, OR 2397
110	Complete length, with a stepped head. L: 58 mm; W: 8 mm; Th: 7 mm Site 2, 1267, wall 47, Medieval, OR 2119	123 i) Complete length. ii) Shank, tip missing. i) L: 62 mm; W: 16 mm; Th: 5 mm ii) L: 58 mm; W: 8 mm; Th: 5 mm Site 2, 1269, layer, Medieval, OR 2403
111	Complete length, shank curved. L: 50 mm; W: 10 mm; Th: 5 mm Site 2, 1380, fill of ditch 1438, Medieval, OR 2392	124 Shank only. L: 44 mm Site 2, 736, layer, Medieval, OR 1542
112	i) Complete length, shank curved. ii) Very corroded, shank incomplete. iii) Shank only. i) L: 52 mm; W: 14 mm; Th: 5 mm iii) L: 38 mm Site 2, 1177, layer, Medieval, OR 2156	125 Bearded head, the shank incomplete. L: 34 mm; W: 10 mm; Th: 8 mm Site 2, 736, layer, Medieval, OR 1549
113	Shank, largely missing. L: 16 mm; W: 21 mm; Th: 5 mm Site 2, 1328, layer, Medieval, OR 2332	126 i) Shank, incomplete. ii) Shank, tip missing. iii) Shank, incomplete. iv) Shank fragments. i) L: 25 mm; W: 19 mm; Th: 5 mm ii) L: 18 mm; W: 11 mm; Th: 4 mm iii) L: 30 mm; W: 9 mm; Th: 5 mm Site 2, 1041, layer, Medieval, OR 1932
114	Very corroded. ?Shank incomplete. L: 36 mm Site 2, 1353, layer, Medieval, OR 2349	
115	Shank only, curved. L: 58 mm Site 2, 45, metallated surface, Medieval, OR 131	127 Shank only. L: 32 mm Site 2, 1041, layer, Medieval, OR 2043
116	i) Domed head, shank tip missing. ii) Complete length, with wood adhering.	128 Very corroded. Site 2, 1041, layer, Medieval, OR 2150

- 129 i) Shank only.
ii) Shank only.
i) L: 25 mm
ii) L: 23 mm
Site 2, 1203, layer, Medieval, OR 2004
- 130 i) Stepped head, the shank incomplete.
ii) Shank, largely missing.
i) L: 43 mm; W: 7 mm; Th: 5 mm
ii) L: 13 mm; W: 18 mm; Th: 5 mm
Site 2, 1203, layer, Medieval, OR 2012
- 131 Shank only.
L: 39 mm
Site 2, 1203, layer, Medieval, OR 2069
- 132 i) Shank only.
ii) Shank only.
i) L: 20 mm
ii) L: 15 mm
Site 2, 1097, wall, Structure A1, Medieval, OR 1963
- 133 Complete length.
L: 45 mm; W: 17 mm; Th: 5 mm
Site 2, 1097, wall, Structure A1, Medieval, OR 2132
- 134 i) Shank, incomplete.
ii) Shank only.
i) L: 28 mm; W: 10 mm; Th: 5 mm
ii) L: 45 mm
Site 2, 121, hillwash, Medieval, OR 353a
- 135 Complete length.
L: 46 mm; W: 10 mm; Th: 5 mm
Site 2, 121, hillwash, Medieval, OR 373
- 136 Shank, tip missing.
L: 38 mm; W: 20 mm; Th: 5 mm
Site 2, 121, hillwash, Medieval, OR 468
- 137 i) Shank, largely missing.
ii) Shank only.
i) L: 10 mm; L: 15 mm; Th: 4 mm
ii) L: 30 mm
Site 2, 121, hillwash, Medieval, OR 928
- 138 Shank only, slightly curved.
L: 40 mm
Site 2, 121, hillwash, Medieval, OR 937
- 139 Complete length.
L: 49 mm; W: 18 mm; Th: 5 mm
Site 2, 121, hillwash, Medieval, OR 938
- 140 Shank, incomplete.
L: 15 mm; W: 17 mm; Th: 5 mm
Site 2, 121, hillwash, Medieval, OR 1331
- 141 i) Complete length, the shank bent in the centre, the tip clenched.
ii) Complete length.
iii) Complete length.
i) L: 60 mm; W: 22 mm; Th: 8 mm
ii) L: 70 mm; W: 25 mm; Th: 8 mm
iii) L: 54 mm; W: 19 mm; Th: 6 mm
Site 2, 121, hillwash, Medieval, OR 1335a
- 142 Shank, tip missing, with wood remains.
L: 51 mm; W: 23 mm; Th: 8 mm
Site 2, 121, hillwash, Medieval, OR 1360
- 143 Domed head, the shank tip missing.
L: 26 mm; W: 13 mm; Th: 4 mm
Site 2, 121, hillwash, Medieval, OR 1362
- 144 Shank, tip missing.
L: 27 mm; W: 12 mm; Th: 5 mm
Site 2, 121, hillwash, Medieval, OR 1933
- 145 Complete length, the shank bent in the centre.
L: 33 mm; W: 5 mm; Th: 2 mm
Site 2, 169, hillwash, Medieval, OR 598
- 146 Shank, tip missing.
L: 41 mm; W: 11 mm; Th: 4 mm
Site 2, 169, hillwash, Medieval, OR 608
- 147 Shank only, L-shaped.
L: 32 mm
Site 2, 169, hillwash, Medieval, OR 726
- 148 Complete length.
L: 46 mm; W: 7 mm; Th: 5 mm
Site 2, 169, hillwash, Medieval, OR 752
- 149 Shank, tip missing.
L: 25 mm; W: 11 mm; Th: 4 mm
Site 2, 291, hillwash, Medieval, OR 891
- 150 Head and shank, incomplete, with wood remains.
L: 35 mm; W: 5 mm; Th: 5 mm
Site 2, 152, tumble from churchyard wall, Medieval/Post-medieval, OR 367
- 151 Shank only.
L: 32 mm
Site 2, 152, tumble from churchyard wall, Medieval/Post-medieval, OR 1025
- 152 Complete length.
L: 52 mm; W: 6 mm; Th: 4 mm
Site 2, 315, tumble from churchyard wall, Medieval/Post-medieval, OR 1050
- 153 Complete length, the shank bent.
L: 38 mm; W: 10 mm; Th: 2 mm

	Site 2, 48, fill of croft boundary ditch 698, Medieval/Post-medieval, OR 1543	164	Shank. L: 33 mm Site 2, 583, layer, Medieval/Post-medieval, OR 1378
154	Shank, tip missing. L: 30 mm; W: 15 mm; Th: 5 mm Site 2, 1190, stone spread, Medieval/Post-medieval, OR 2011a	165	i) Shank, tip missing. ii) Shank only, curved. i) L: 45 mm; W: 12 mm ii) L: 28 mm Site 2, 583, layer, Medieval/Post-medieval, OR 1393
155	Very corroded. L: 27 mm Site 2, 1190, stone spread, Medieval/Post-medieval, OR 2019	166	i) Complete length. ii) Shank only. i) L: 25 mm; W: 16 mm; Th: 6 mm ii) L: 31 mm Site 2, 583, layer, Medieval/Post-medieval, OR 1527
156	Shank only. L: 19 mm Site 2, 1190, stone spread, Medieval/Post-medieval, OR 2027	167	i) Complete length. ii) Complete length, shank curved. iii) Shank, tip missing. iv) Shank, tip missing. v) Head and shank, incomplete. vi) Shank, curved, incomplete. vii) Shank, incomplete. viii) Shank, incomplete. ix) Shank, incomplete. x) Shank only. xi) Shank only. xii) Shank only. xiii) Shank only. i) L: 46 mm; W: 17 mm; Th: 4 mm ii) L: 55 mm; W: 10 mm; Th: 5 mm iii) L: 50 mm; W: 18 mm; Th: 6 mm iv) L: 40 mm; W: 12 mm; Th: 4 mm v) L: 25 mm; W: 13 mm; Th: 7 mm vi) L: 33 mm; W: 12 mm; Th: 5 mm vii) L: 17 mm; W: 17 mm; Th: 5 mm viii) L: 20 mm; W: 18 mm; Th: 5 mm ix) L: 24 mm; W: 9 mm; Th: 7 mm x) L: 33 mm xi) L: 32 mm xii) L: 30 mm xiii) L: 29 mm Site 2, 1016, demolition layer, Medieval/Post-medieval, OR 1909b
157	Complete length, the shank tip bent. L: 51 mm; W: 13 mm; Th: 5 mm Site 2, 1190, stone spread, Medieval/Post-medieval, OR 2031		
158	Shank only, curved. L: 58 mm Site 2, 1190, stone spread, Medieval/Post-medieval, OR 2038		
159	Shank, tip missing. L: 37 mm; W: 13 mm; Th: 5 mm Site 2, 1190, stone spread, Medieval/Post-medieval, OR 2041		
160	Shank only. L: 32 mm Site 2, 1190, stone spread, Medieval/Post-medieval, OR 2098		
161	i) Complete length, triangular head. ii) Shank, tip missing. iii) Shank, incomplete. iv) Very corroded. v) Shank only. vi) Shank only. vii) Shank only. i) L: 90 mm; W: 16 mm; Th: 5 mm ii) L: 43 mm; W: 18 mm iii) L: 32 mm; W: 16 mm; Th: 5 mm iv) L: 30 mm; W: 9 mm; Th: 5 mm v) L: 40 mm vi) L: 35 mm vii) L: 23 mm Site 2, 382, stone spread, Medieval/Post-medieval, OR 1223a	168	Shank only. L: 25 mm Site 2, 1074, clay layer, Medieval/Post-medieval, OR 1906
162	Shank, incomplete. L: 48 mm; W: 7 mm; Th: 4 mm Site 2, 382, stone spread, Medieval/Post-medieval, OR 1261	169	i) Complete length. ii) Shank, incomplete. iii) Shank only. i) L: 42 mm; W: 18 mm; Th: 5 mm ii) L: 28 mm; W: 14 mm; Th: 5 mm iii) L: 40 mm Site 2, 1099, demolition layer, Medieval/Post-medieval, OR 1974a
163	Complete length, with wood remains. L: 62 mm; W: 15 mm; Th: 4 mm Site 2, 583, layer, Medieval/Post-medieval, OR 1373		

- 170 i) Shank, tip missing.
ii) Shank, largely missing.
iii) Shank, incomplete.
i) L: 34 mm; W: 24 mm; Th: 8 mm
ii) L: 12 mm; W: 15 mm; Th: 4 mm
iii) L: 28 mm; W: 15 mm; Th: 4 mm
Site 2, 41, tumble from churchyard wall, Post-medieval, OR 2084a
- 171 i) Shank, tip missing.
ii) Shank, tip missing.
iii) Shank, incomplete.
iv) Shank, curved, tip missing.
v) Shank only.
vi) Shank only.
i) L: 43 mm; W: 10 mm; Th: 5 mm
ii) L: 71 mm; W: 11 mm; Th: 6 mm
iii) L: 30 mm; W: 18 mm; Th: 6 mm
iv) L: 48 mm; W: 19mm; Th: 6 mm
v) L: 64 mm
vi) L: 42 mm
Site 2, 36, hillwash, Post-medieval, OR 1203a
- 172 Shank, tip missing.
L: 47 mm; W: 18 mm; Th: 5 mm
Site 2, 36, hillwash, Post-medieval, OR 1440a
- 173 i) Shank, incomplete.
ii) Shank only.
i) L: 32 mm; W: 11 mm; Th: 5 mm
ii) L: 47 mm
Site 2, 36, hillwash, Post-medieval, OR 1442a
- 174 Two corroded shanks.
Site 2, 36, hillwash, Post-medieval, OR 1453
- 175 Shank only, with wood remains.
L: 31 mm
Site 2, 36, hillwash, Post-medieval, OR 1803
- 176 Shank only.
L: 32 mm
Site 2, 36, hillwash, Post-medieval, OR 1806
- 177 Shank only.
L: 35 mm
Site 2, 36, hillwash, Post-medieval, OR 1824a
- 178 i) Complete length.
ii) Shank, tip missing.
iii) Complete length, shank curved, with wood remains.
iv) Shank only.
i) L: 38 mm; W: 22 mm; Th: 5 mm
ii) L: 41 mm; W: 20 mm; Th: 5 mm
iii) L: 25 mm; W: 18 mm; Th: 5 mm
iv) L: 35 mm
Site 2, 36, hillwash, Post-medieval, OR 1846
- 179 Complete length.
L: 35 mm; W: 10 mm; Th: 3 mm
Site 2, 69, hillwash, Post-medieval, OR 337
- 180 Shank.
L: 46 mm
Site 2, 71, hillwash, Post-medieval, OR 1306
- 181 Shank, tip missing.
L: 65 mm; W: 20 mm; Th: 5 mm
Site 2, 89, hillwash, Post-medieval, OR 793
- 182 i) Complete length, with a rectangular faceted head.
ii) Complete length, the shank curved.
iii) Complete length, the shank curved.
iv) Shank, curved.
v) Complete length.
vi) Complete length.
vii) Shank, incomplete.
viii) Shank, incomplete.
ix) Shank, incomplete.
x) Shank, incomplete.
xi) Modern steel.
xii) Modern steel.
xiii) Modern steel.
i) L: 119 mm; W: 13 mm; Th: 9 mm
ii) L: 70 mm; W: 9 mm; Th: 7 mm
iii) L: 72; W: 13 mm; Th: 6 mm
iv) L: 85 mm; W: 10 mm; Th: 6mm
v) L: 60 mm; W: 14 mm; Th: 6 mm
vi) L: 48 mm; W: 15 mm; Th: 6 mm
vii) L: 35 mm; W: 15 mm; Th: 5 mm
viii) L: 35 mm; W: 12 mm; Th: 5 mm
ix) L: 30 mm; W: 10 mm; Th: 5 mm
x) L: 50 mm
xi) L: 73 mm
xii) L: 77 mm
xiii) L: 52 mm
Site 2, 26, Topsoil, OR 1206b
- 183 Complete length.
L: 53 mm; W: 17 mm; Th: 5 mm
Site 2, 30, layer, Post-medieval, OR 64
- 184 Shank only.
L: 51 mm
Site 2, 72, layer, Post-medieval, OR 2173
- 185 Complete length.
L: 48 mm; W: 13 mm; Th: 5 mm
Site 2, 90, demolition churchyard wall, Modern, OR 1134
- 186 Shank, tip missing.
L: 53 mm; W: 12 mm; Th: 6 mm
Site 2, 90, demolition churchyard wall, Modern, OR 1242
- 187 Very corroded dome-headed tack.
L: 33 mm; Th: 3 mm

Site 2, 90, demolition churchyard wall, Modern, OR 1250a			
188	<ul style="list-style-type: none"> i) Shank, tip missing. ii) Shank, tip missing. iii) Shank only, L-shaped. iv) Shank only. v) Shank only. i) L: 54 mm; W: 16 mm; Th: 6 mm ii) L: 39 mm; W: 17 mm; Th: 6 mm iii) L: 110 mm iv) L: 20 mm v) L: 30 mm <p>Site 2, 162, Unstratified, OR 1013</p>	<ul style="list-style-type: none"> iv) Shank, tip missing. v) Shank only. vi) Head only. i) L: 140 mm; W: 19 mm; Th: 10 mm ii) L: 46 mm; W: 16 mm; Th: 5 mm iii) L: 24 mm; W: 24 mm; Th: 5 mm iv) L: 28 mm; W: 13 mm; Th: 5 mm v) L: 53 mm vi) L: 28 mm <p>Site 2, 162, Unstratified, OR 1716a</p>	
189	<ul style="list-style-type: none"> i) Shank, bent in the centre, the tip missing. ii) Shank, largely missing. iii) Shank, tip missing. iv) Shank only. v) Shank only. vi) Shank only, the tip clenched, with wood remains. vii) Shank only. viii) Shank only. ix) Shank only. x) Shank only. xi) Shank only. i) L: 43 mm; W: 16 mm; Th: 3 mm ii) L: 10 mm; W: 16 mm; Th: 5 mm iii) L: 45 mm; W: 17 mm; Th: 5 mm iv) L: 52 mm v) L: 47 mm vi) L: 45 mm vii) L: 43 mm viii) L: 43 mm ix) L: 40 mm x) L: 32 mm xi) L: 22 mm <p>Site 2, 162, Unstratified, OR 1020a</p>	<p>194 Shank, tip missing. L: 52 mm; W: 20 mm; Th: 6 mm Site 2, 162, Unstratified, OR 1804</p> <p>195 Head only. L: 15 mm Site 2, 162, Unstratified, OR 1815b</p> <p>196 Complete length, with wood remains. L: 66 mm; W: 18 mm; Th: 5 mm Site 2, 162, Unstratified, OR 1902</p> <p>197 i) Complete length, dome-headed. ii) Complete length. iii) Shank, incomplete. iv) Shank, incomplete. v) Shank only. vi) Shank only. i) L: 20 mm; W: 19 mm; Th: 4 mm ii) L: 36 mm; W: 12 mm; Th: 4 mm iii) L: 37 mm; W: 20 mm; Th: 4 mm iv) L: 30 mm; W: 16 mm; Th: 4 mm v) L: 70 mm vi) L: 43 mm Site 2, 162, Unstratified, OR 2414a</p>	
190	<ul style="list-style-type: none"> i) Shank only. ii) Shank only. i) L: 43 mm ii) L: 33 mm <p>Site 2, 162, Unstratified, OR 1354a</p>	<p>198 i) Complete length, with wood remains. ii) Shank, tip missing. iii) Shank only. i) L: 65 mm; W: 20 mm; Th: 5 mm ii) L: 36 mm; W: 14 mm; Th: 6 mm iii) L: 31 mm Site 2, 162, Unstratified, OR 2428a</p>	
191	<p>Approximately 20 nails.</p> <p>Site 2, 162, Unstratified, OR 1635c</p>	<p>199 Shank. L: 50 mm Site 2, 162, Unstratified, OR 2431b</p>	
192	<ul style="list-style-type: none"> i) Shank, largely missing. ii) Shank, incomplete. iii) Shank only. i) L: 18 mm; W: 24 mm; Th: 8 mm ii) L: 32 mm; W: 26 mm; Th: 10 mm iii) L: 40 mm <p>Site 2, 162, Unstratified, OR 1713a</p>	<p>200 Twenty-eight nails, seven shanks. Site 2, 162, Unstratified, OR 2432a</p> <p>201 Complete length. L: 42 mm; W: 12 mm; Th: 5 mm Site 3, 833, fill of earlier excavation, Modern, OR 1617</p>	
193	<ul style="list-style-type: none"> i) Shank, tip missing. ii) Shank, S-shaped, the tip missing. iii) Shank, incomplete. 	<p>202 i) Shank, incomplete. ii) Shank only.</p>	

	i) L: 27 mm; W: 14 mm; Th: 5 mm ii) L: 31 mm Site 3, 835, fill of earlier excavation, Modern, OR 1632		L: 40 mm; W: 20 mm; Th: 5 mm Site 2, 667, fill of grave 666, Early medieval, OR 1462
203	Shank, incomplete. L: 30 mm; W: 13 mm; Th: 5 mm Site 3, 854, tumble from churchyard wall, Modern, OR 1652	216	A U-shaped staple. Site 2, 36, hillwash, Post-medieval, OR 1824b
204	Shank only, very corroded. Site 3, 896, fill of drain 892, Modern, OR 1699	217	A U-shaped staple. L: 34 mm; W: 16 mm Site 2, 90, demolition churchyard wall, Modern, OR 1250b
205	Fourteen very corroded nails. Site 3, 953, fill of drain 892, Modern, OR 1758	218	A rectangular staple fragment, consisting of one arm and part of the head. L: 27 mm Site 2, 90, demolition churchyard wall, Modern, OR 1250c
<hr/> Structural Ironwork and Fittings <hr/>		219	A U-shaped staple. L: 18 mm; W: 18 mm; Th: 4 mm Site 2, 162, Unstratified, OR 2414b
206	Screw. Site 2, 162, Unstratified, OR 1815c	220	A small looped fitting with convex sides in the centre, which narrow at each end; one is broken, while the other curves over into a loop. L: 26 mm; W: 20 mm; Th: 2 mm Site 2, 162, Unstratified, OR 2432b
207	Nut. Diam: 27 mm; Th: 22 mm Site 1, 21, layer, Post-medieval, OR 1102	Chest or coffin fittings The majority of the objects described in this section are hinge straps or corner brackets; parts of incomplete examples are referred to as straps. There are a few less substantial pieces of sheet or plate, however, which are pierced, but seem unlikely to have been hinge straps or corner brackets, and these are referred to as plates. Two hinge straps which survive linked together are referred to under a single catalogue number. The sides of the straps are straight, or roughly straight, unless stated. The shanks of the nails in the fittings are largely missing, except where stated.	
208	A possible bolt, consisting of a large disc/head, a short shank, and small rectangular 'rove'. L: 13 mm; W (head): 33 mm Site 2, 90, demolition churchyard wall, Modern, OR 1078	221	Two hinge straps linked together (Figs 38, 106). a) narrows towards one end, where it curves over slightly, the tip being missing. At the head, it narrows and curves over to form a loop. It is pierced at the head, the nail being <i>in situ</i> . There are wood remains on the inner face. b) narrows towards the base, where it curves over. At the head, it has been drawn out and curved around to form a closed loop. It is pierced below the loop, the nail <i>in situ</i> . a) L: 130 mm; W: 29 mm; Th: 7 mm; L (nail): 34 mm; W (nail): 18 mm; Th: 6 mm b) L: 125 mm; W: 30 mm; Th: 10 mm; W (nail): 15 mm Site 2, 368, Disturbed Natural Subsoil, OR 1339
209	A possible bolt, consisting of a disc with a central hole, through which there are the remains of a stout shank. L (shank): 40 mm; Diam (disc): 61 mm Site 2, 162, Unstratified	222	The end of a strap, very corroded; it is roughly rounded and pierced, the nail <i>in situ</i> . L: 24 mm; W: 24 mm; Th: 2 mm Site 2, 368, Disturbed Natural Subsoil, OR 1345b
210	A clench-bolt, consisting of a diamond-shaped rove. L: 67 mm; W (head): 25 mm; W (rove): 21 mm; Th (shank): 7 mm Site 2, 26, Topsoil, OR 1206c	223	Strap, with parallel sides, one end rounded, the other missing. It is pierced, the nail <i>in situ</i> .
211	A clench bolt, consisting of a single rove. L: 30 mm; W: 23 mm Site 2, 162, Unstratified, OR 2431c		
212	A U-shaped staple. L: 65 mm; W: 21 mm; Th: 3 mm Site 2, 368, Disturbed Natural Subsoil, OR 1345		
213	A U-shaped staple with one arm missing. L: 30 mm; W: 15 mm; Th: 3 mm Site 2, 189, fill of grave 190, Early medieval, OR 499		
214	A U-shaped staple (Figs 37, 106). L: 40 mm; W: 15 mm; Th: 3 mm Site 2, 199, fill of grave 200, Early medieval, OR 522		
215	A U-shaped staple with a fragment of another object attached (Figs 37, 106).		

- L: 25 mm; W: 15 mm; Th: 7 mm
Site 2, 772, Disturbed Natural Subsoil, OR 1540
- 224 Strap (Figs 45, 106), with parallel sides. One end has rounded corners; it is pierced nearby, the nail *in situ*, the other end missing. There are wood remains on one face.
L: 55 mm; W: 19 mm; Th: 7 mm
Site 2, 593, cemetery level, Early medieval, OR 1475
- 225 Strap, narrowing. One end has rounded corners, pierced nearby, the other end missing.
L: 43 mm; W: 23 mm; Th: 7 mm
Site 2, 595, cemetery level, Early medieval, OR 1385
- 226 Strap, in four pieces.
L: 41 mm; W: 32 mm; Th: 9 mm
Site 2, 596, cemetery level, Early medieval, OR 1314
- 227 Hinge strap (Figs 44, 106), incomplete. The surviving end has been drawn out and curved around to form a loop.
L: 45 mm; W: 10 mm; Th: 6 mm
Site 2, 596, cemetery level, Early medieval, OR 1379b
- 228 Strap (Figs 46, 106), with convex sides, probably broken at each end. It is pierced, the nail *in situ*, the shank incomplete. There are wood remains on one face.
L: 50 mm; W: 25 mm; Th: 8 mm; L (nail): 23 mm
Site 2, 596, cemetery level, Early medieval, OR 1478
- 229 Strap, very corroded. It has slightly irregular sides, and one end is missing. It has been pierced twice, the nails *in situ*.
L: 60 mm; W: 20 mm; Th: 8 mm
Site 2, 713, cemetery level, Early medieval, OR 1477
- 230 ?Hinge strap (Figs 44, 106), broken at each end. It narrows, and is pierced at its widest point. There are wood remains on one face.
L: 106 mm; W: 18 mm; Th: 7 mm
Site 2, 713, cemetery level, Early medieval, OR 1648b
- 231 ?Corner bracket arm (Figs 45, 106), with a rounded, pierced terminal, the nail *in situ*.
L: 35 mm; W: 15 mm
Site 2, 713, cemetery level, Early medieval, OR 1648c
- 232 Strap (Figs 46, 106), narrowing slightly, and rounded at its wider end. It is pierced nearby, the nail *in situ*, while the other end is broken.
L: 64 mm; W: 20 mm; Th: 8 mm
Site 2, 713, cemetery level, Early medieval, OR 1648d
- 233 Strap (Figs 45, 107), with roughly parallel sides, and a rounded, pierced terminal, the nail *in situ*. There are wood remains.
L: 85 mm; W: 22 mm; Th: 6 mm
Site 2, 713, cemetery level, Early medieval, OR 1682
- 234 Two hinge straps linked together (Figs 42, 107).
a) has convex sides and narrows towards the base, which is missing. At the head, it would have curved over to form a loop, now missing. It is pierced twice near the head, the holes arranged transversely, the nails *in situ*.
b) has parallel sides and a rounded base. At the head, it has been drawn out and curved around to form a closed loop. It is pierced twice, with one nail *in situ*. In the loop, there are the remains of 234a. There are wood remains on one face.
a) L: 70 mm; W: 27 mm; Th: 7 mm
b) L: 57 mm; W: 23 mm; Th: 6 mm
Site 2, 713, cemetery level, Early medieval, OR 1718b
- 235 Strap, with parallel sides. One end is rounded, and is pierced nearby, the nail *in situ*, the other end broken. There are wood remains on one face.
L: 38 mm; W: 21 mm; Th: 5 mm; L (nail): 25 mm
Site 2, 713, cemetery level, Early medieval, OR 1718c
- 236 End of a strap, ?rounded, and pierced.
L: 20 mm; W: 24 mm; Th: 7 mm
Site 2, 187, fill of grave 188, Early medieval, OR 495b
- 237 Strap (Figs 45, 107), with parallel sides. One end has rounded corners, the other being missing. It is pierced twice and there are wood remains on one face.
L: 50 mm; W: 15 mm; Th: 7 mm
Site 2, 189, fill of grave 190, Early medieval, OR 494
- 238 ?Base of a hinge strap, in two pieces. It narrows towards one end, where it is curved over, and is broken at the wider end.
L: 67 mm; W: 12 mm; Th: 4 mm
Site 2, 342, cemetery level, Early medieval, OR 1324
- 239 Strap (Figs 46, 107), with slightly concave sides, rounded at both ends. It is pierced twice, the nails *in situ*, the shanks incomplete. There are wood remains on one face.
L: 76 mm; W: 20 mm; Th: 7 mm; L (nails): 7 mm, 13 mm; W (heads): 14 mm, 11 mm
Site 2, 547, fill of grave 548, Early medieval, OR 1330
- 240 Strap (Figs 45, 107), with parallel sides. One end is rounded, and is pierced nearby, the nail *in situ*, the other end broken. There are wood remains on one face.
L: 53 mm; W: 19 mm; Th: 7 mm; L (nail): 16 mm
Site 2, 665, cemetery level, Early medieval, OR 1610a
- 241 Strap, very corroded. Originally, it had parallel sides, and one end is rounded and pierced.
L: 81 mm; W: 21 mm; Th: 7 mm
Site 2, 665, cemetery level, Early medieval, OR 1610b
- 242 Hinge strap (Figs 38, 107). The upper third has slightly convex sides, and it narrows towards the base, where it is curved over. At the head, it curves over to form a loop, now largely missing; it is pierced near the head.
L: 102 mm; W: 20 mm; Th: 8 mm
Site 2, 665, cemetery level, Early medieval, OR 1630

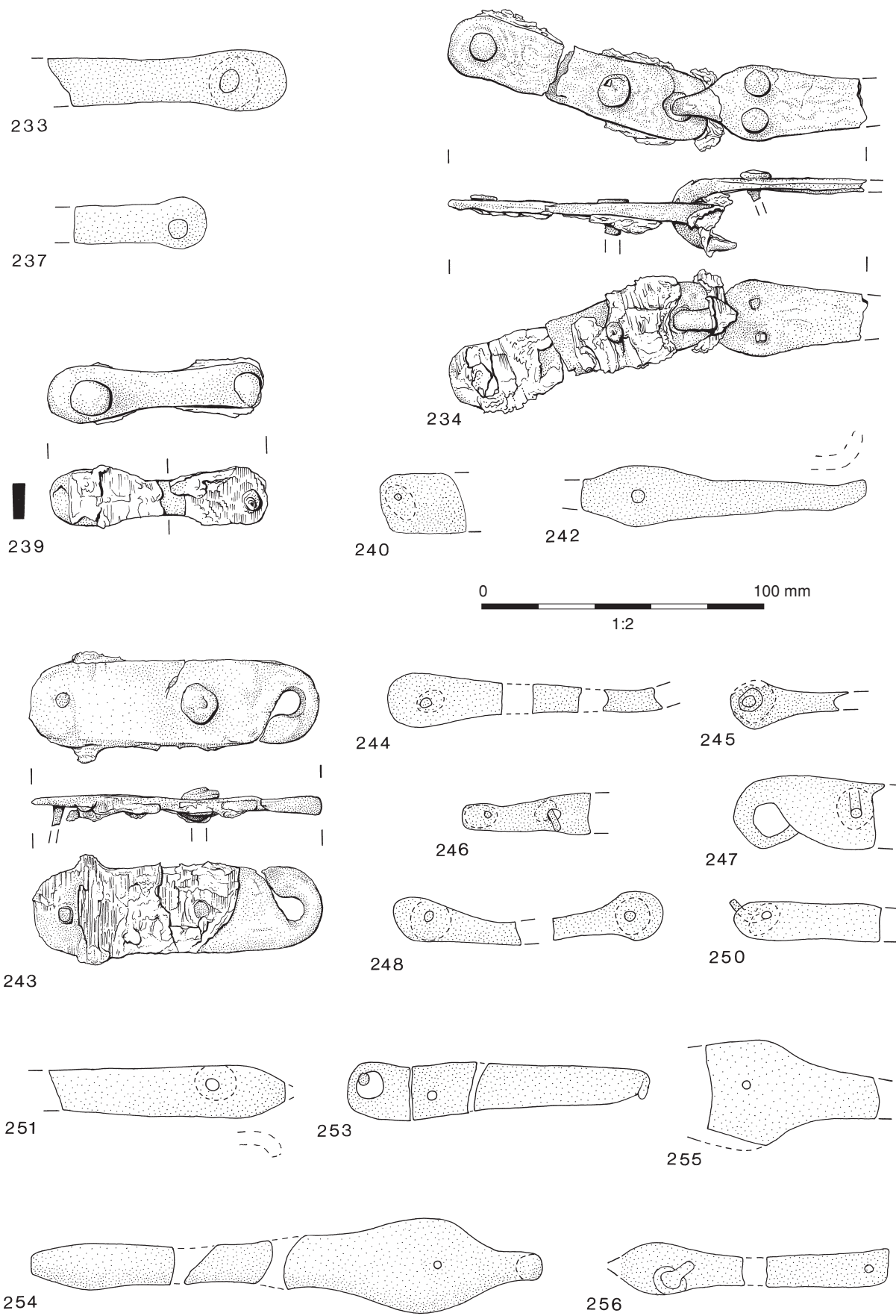


Figure 107: Iron 2

- 243 Hinge strap (Figs 43, 107), with parallel sides, and a rounded base; at the head, it has been drawn out and curved around to form a closed loop.
L: 102 mm; W: 30 mm; Th: 5 mm
Site 2, 665, cemetery level, Early medieval, OR 1757
- 244 Strap (Figs 46, 107), rounded at one end, where it is pierced, the nail *in situ*. It narrows towards the other end, which is missing. There are wood remains on one face. There were also two other pieces of strap found, which were probably part of it.
L: 40 mm; W: 20 mm; Th: 9 mm; L (nail): 25 mm; L (strap fragments): 21 mm, 17 mm; W (strap fragments): 10 mm
Site 2, 667, fill of grave 666, Early medieval, OR 1432a
- 245 Strap (Figs 45, 107), with parallel sides, and at one end a rounded, pierced terminal, the nail *in situ*; the other end is missing. There are wood remains on one face.
L: 40 mm; W: 15 mm; Th: 9 mm; L (nail): 20 mm; W (head): 15 mm; Th: 5 mm
Site 2, 667, fill of grave 666, Early medieval, OR 1432b
- 246 Strap (Figs 45, 107), very corroded. It narrows to one end, which is rounded, the other end being broken. It is pierced twice.
L: 45 mm; W: 15 mm; Th: 8 mm
Site 2, 667, fill of grave 666, Early medieval, OR 1495
- 247 Hinge strap (Figs 44, 107), the lower part missing. At the head, it has been drawn out and curved around to form a closed loop. It is pierced once, the nail *in situ*.
L: 50 mm; W: 25 mm; Th: 8 mm; L (nail): 31 mm
Site 2, 859, fill of grave 858, Early medieval, OR 1583
- 248 Corner bracket, in two pieces (Figs 45, 107). The arms have parallel sides and rounded, pierced terminals. There are wood remains on the inner face.
L (arms): 45 mm, 42 mm; W: 17 mm; Th: 7 mm
Site 2, 861, fill of grave 860, Early medieval, OR 1614b
- 249 Strap, with parallel sides. One end is rounded and pierced nearby, and it is curved over at the other end and broken.
L: 83 mm; W: 13 mm; Th: 5 mm
Site 2, 887, fill of grave 888, Early medieval, OR 1639a
- 250 Strap (Figs 45, 107), with parallel sides. It is rounded at one end, pierced nearby, the nail *in situ*, the other end being broken.
L: 52 mm; W: 13 mm; Th: 4 mm
Site 2, 887, fill of grave 888, Early medieval, OR 1639b
- 251 Hinge strap (Figs 41, 107), narrowing slightly towards the base, which is missing; at the head, it narrows, with convex shoulders, and it curves over to form a loop, now largely missing. It is pierced near the head, the nail *in situ*. There are wood remains on one face.
L: 84 mm; W: 18 mm; Th: 7 mm
Site 2, 899, fill of grave 898, Early medieval, OR 1711b
- 252 Strap, with parallel sides. One end is broken, the other rounded; it is pierced nearby, the nail *in situ*. There are wood remains on one face. It is possibly part of 251.
L: 36 mm; W: 17 mm
Site 2, 899, fill of grave 898, Early medieval, OR 1711c
- 253 Hinge strap (Figs 43, 107), in three pieces. It narrows slightly towards the base, which is curved over; at the head, it has rounded corners, and there is a punched hole, with the remains of the loop of another hinge strap *in situ*; the main body is pierced near the head.
L: 106 mm; W: 19 mm; Th: 7 mm
Site 2, 899, fill of grave 898, Early medieval, OR 1711d
- 254 Hinge strap (Figs 38, 107), in three pieces. The upper third has convex sides, and it narrows towards the base, which is curved over; at the head, it curves over to form a loop, now incomplete. It is pierced near the head and there are wood remains on one face.
L: 90 mm; W: 32 mm; Th: 7 mm
Site 2, 909, fill of grave 910, Early medieval, OR 1677
- 255 Hinge strap pierced (Figs 46, 107). Most of the main body is missing, but it appears to have narrowed; at the head, it narrows, with concave shoulders, to form a loop, now largely missing.
L: 62 mm; W: 35 mm; Th: 10 mm
Site 2, 909, fill of grave 910, Early medieval, OR 1680
- 256 Strap, in two pieces (Figs 46, 107). It has parallel sides, with a rounded, pierced terminal at one end, and is broken at the other. The body of the strap is also pierced, the nails *in situ*.
L: 92 mm; W: 24 mm; Th: 7 mm
Site 2, 909, fill of grave 910, Early medieval, OR 1681
- 257 Hinge strap (Fig 108), very corroded. It narrows towards the base, where it curved over. At the head, it has been drawn out and curved around to form a closed loop; it is pierced near the head. (A fragment of the loop of a second strap is fused on to the loop). There are wood remains on one face.
L: 125 mm; W: 22 mm; Th: 8 mm
Site 2, 909, fill of grave 910, Early medieval, OR 1686
- 258 Hinge strap (Figs 42, 108), with convex sides; it narrows towards the base, which is missing. At the head, it narrows and curves over to form a loop, now largely missing. It is pierced twice at the widest point, the holes arranged transversely, and the nails *in situ*. There are wood remains on one face.
L: 93 mm; W: 31 mm; Th: 3 mm; L (nails) 20 mm; W (head): 10 mm; Th (shank): 4 mm
Site 2, 919, fill of grave 920, Early medieval, OR 1710a
- 259 Hinge strap (Figs 43, 109), with parallel sides; at the head, it has been drawn out and curved around to form a closed loop. The base is rounded, such that the ends

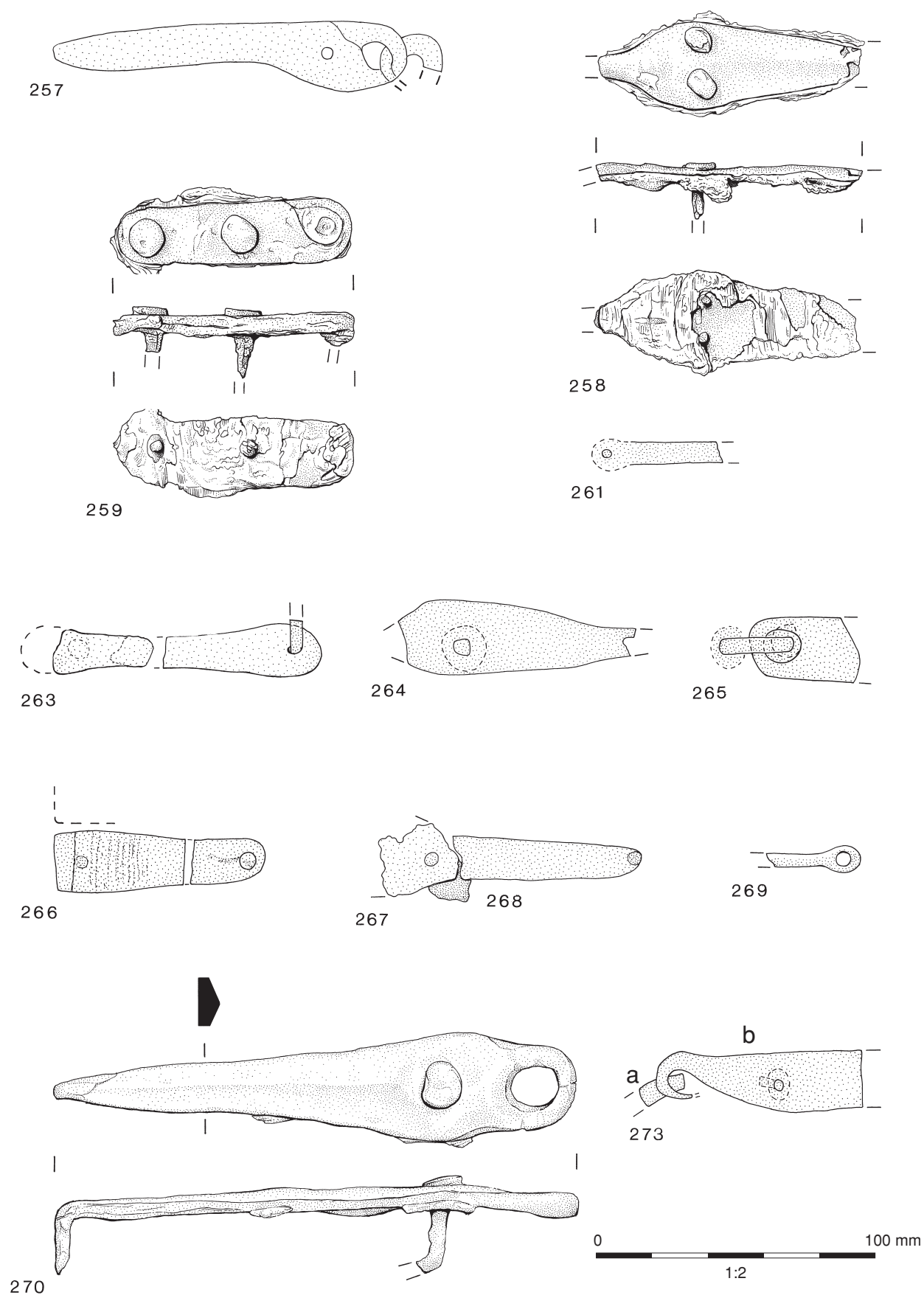


Figure 108: Iron 3

- are symmetrical. It is pierced twice, the nails *in situ*, the shanks incomplete. There are wood remains on one face.
L: 83 mm; W: 22 mm; Th: 6 mm; L (nails): 25 mm, 16 mm;
W (heads): 13 mm, 12 mm; Th (shanks): 3 mm
Site 2, 919, fill of grave 920, Early medieval, OR 1710b
- 260 Strap, broken at both ends. It narrows, and is pierced towards the wider end. There are wood remains on one face.
L: 44 mm; W: 16 mm; Th: 6 mm
Site 2, 921, fill of grave 922, Early medieval, OR 1696b
- 261 Strap (Figs 45, 108), with parallel sides, a rounded, pierced terminal at one end, and broken at the other. There are wood remains on one face.
L: 43 mm; W: 13 mm; Th: 5 mm
Site 2, 941, fill of grave 940, Early medieval, OR 1725b
- 262 Strap, very corroded. It has parallel sides, a rounded, pierced terminal at one end, and is broken at the other.
L: 35 mm; W: 7 mm; Th: 4 mm
Site 2, 941, fill of grave 940, Early medieval, OR 1725c
- 263 Strap, in two pieces (Figs 46, 108). It has parallel sides, a rounded, pierced terminal at one end; and widens slightly towards the other, which is rounded, and is pierced nearby. There are wood remains on one face.
L: 96 mm; W: 18 mm; Th: 6 mm
Site 2, 945, fill of grave 944, Early medieval, OR 1719b
- 264 Hinge strap (Figs 41, 108). It narrows to the base, which is now missing; at the head, it is curved over to form a loop, also largely missing. It may be pierced near the head.
L: 84 mm; W: 27 mm; Th: 6 mm
Site 2, 963, fill of grave 964, Early medieval, OR 1765b
- 265 Strap (Figs 45, 108), with parallel sides, broken at one end. It is rounded at the other, pierced, with the nail *in situ*.
L: 40 mm; W: 25 mm; Th: 6 mm
Site 2, 963, fill of grave 964, Early medieval, OR 1765c
- 266 Corner bracket (Figs 45, 108), in two pieces. One arm is largely missing; the surviving arm narrows slightly and has a rounded end, pierced nearby, the nail *in situ*. Wood remains adhere to one face.
L (arms): 70 mm, 19 mm; W: 26 mm; Th: 5 mm
Site 2, 542, cemetery level, Early medieval, OR 1423
- 267 Strap (Figs 45, 108), pierced, with parallel sides, one end rounded and the tip bent over, the other broken. There are wood remains on one face. (It may originally have joined 268).
L: 69 mm; W: 14 mm
Site 2, 843, fill of posthole 842, Early medieval, OR 1598a
- 268 Strap (Figs 45, 108), pierced, with parallel sides. One end is straight, the other broken. (It may originally have joined 267).
L: 25 mm; W: 18 mm
Site 2, 843, fill of posthole 842, Early medieval, OR 1598b
- 269 The end of a strap with a rounded, pierced terminal (Figs 45, 108).
L: 37 mm; W: 13 mm; Th: 6 mm
Site 2, 530, churchyard boundary bank, Eleventh/twelfth century, OR 1340
- 270 Hinge strap (Figs 44, 108), with a triangular cross-section. The sides at the head end are convex; it then narrows towards the base, which is missing, but was probably curved over. There is a punched hole at the head, and it is also pierced a little below the head.
L: 195 mm; W: 37 mm; Th: 7 mm
Site 2, 1322, metalled surface, Medieval, OR 2441
- 271 Strap, with parallel sides. One end is rounded and pierced, but the other is missing.
L: 55 mm; W: 15 mm; Th: 4 mm
Site 2, 170, fill of churchyard boundary ditch 215, Medieval, OR 757
- 272 Strap, pierced, with parallel sides. One end has rounded corners, the other end being missing.
L: 62 mm; W: 12 mm; Th: 6 mm
Site 2, 324, churchyard wall, Medieval, OR 1041b
- 273 Hinge strap (Figs 43, 108). It has roughly straight and parallel sides, broken at the base; at the head, it has been drawn out and curved around to form an open loop. Fused to it is part of the loop of another hinge strap. It is pierced once, the nail shank *in situ*.
L: 75 mm; W: 20 mm; Th: 7 mm
Site 2, 736, layer, Medieval, OR 1565
- 274 Plate. It is pierced, the nail shank *in situ*.
L: 32 mm; W: 10 mm; Th: 5 mm
Site 2, 1269, layer, Medieval/Post-medieval, OR 2164b
- 275 Hinge strap (Figs 39, 109). It narrows towards the base, where there are the remains of a pierced, rounded terminal; at the head, it narrows, with convex shoulders, and curves over into a loop, now incomplete and bent flat. Fused to it are the remains of the loop of a second strap. It is pierced near the head.
L (total): 144 mm; W: 25 mm; Th: 7 mm
Site 2, 121, hillwash, Medieval, OR 407
- 276 ?Hinge strap (Figs 44, 109), with parallel sides. At one end, now damaged, is what may have been a rounded, pierced terminal; the other end is curled over. It is pierced twice near the latter end.
L: 107 mm; W: 19 mm; Th: 5 mm
Site 2, 121, hillwash, Medieval, OR 416
- 277 Two hinge straps linked together (Figs 39, 109).
a) has a triangular cross-section and narrows towards the base, where there is a rounded, pierced terminal and a

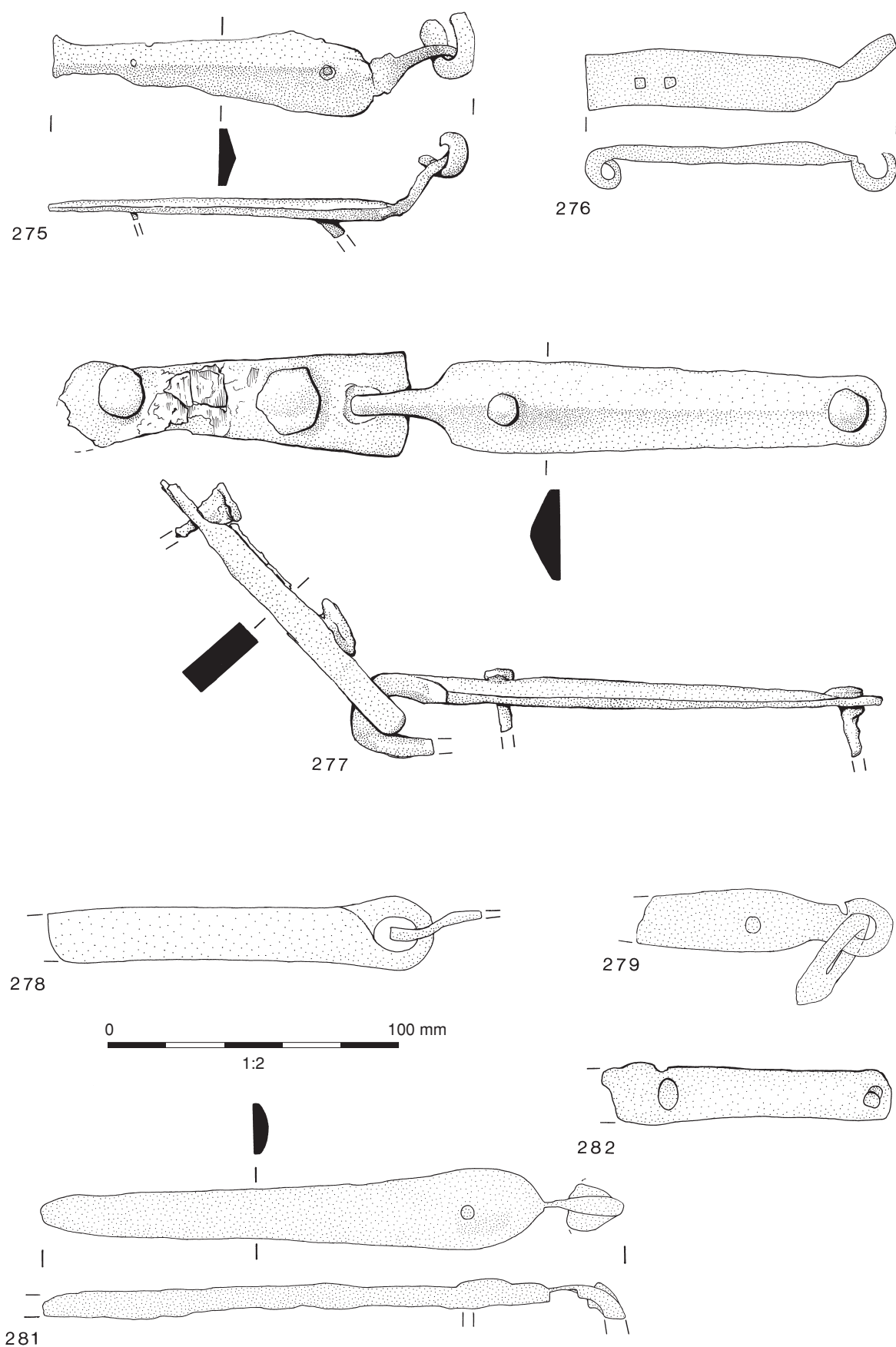


Figure 109: Iron 4

- nail *in situ*; at the head, it narrows, with convex shoulders, and curves over into a loop. It is pierced a little below the head, the nail *in situ*.
- b) narrows towards the base, where there is a rounded, pierced terminal, the nail *in situ*; at the head, there is a hole formed by punching.
- a) L: 19 mm; W: 30 mm; Th: 12 mm
- b) L: 115 mm; W: 38 mm; Th: 10 mm
- Site 2, 121, hillwash, Medieval, OR 424
- 278 Strap (Figs 45, 109), with parallel sides. At the head, it has been drawn out and curved around to form a loop, which is linked to the remains of a staple, the other end being missing.
- L: 131 mm; W: 25 mm; Th: 5 mm
- Site 2, 121, hillwash, Medieval, OR 429
- 279 Two hinge strips linked together (Figs 41, 109).
- a) is incomplete, pierced, and narrows towards the break; at the head, it narrows, with sloping shoulders, and curves over into a loop.
- b) narrows towards the base, which is missing; at the head, it has been drawn out and curved around to form a loop. It is pierced twice.
- a) L: 38 mm; W: 17 mm
- b) L: 85 mm; W: 22 mm; Th: 7 mm
- Site 2, 121, hillwash, Medieval, OR 436
- 280 Strap, with parallel sides, curved over at one end, broken at the other; it is pierced, the nail *in situ*.
- L: 98 mm; W: 15 mm; Th: 6 mm
- Site 2, 121, hillwash, Medieval, OR 451
- 281 Hinge strap (Figs 38, 109), with a triangular cross-section. It narrows towards the base, which is missing but was probably curved over. At the head, it narrows, with convex shoulders, and curved over to form a loop, now flattened out. Fused to it are vestiges of the loop of a second hinge strap. It is pierced near the head, the nail *in situ*.
- L (originally): c 180 mm; W: 28 mm; Th: 4 mm
- Site 2, 121, hillwash, Medieval, OR 452
- 282 Strap (Figs 46, 109), with parallel sides, one end rounded, the other broken. It is pierced twice, the nails *in situ*. There are wood remains on one face.
- L: 100 mm; W: 20 mm; Th: 6 mm
- Site 1, 121, hillwash, Medieval, OR 465
- 283 Strap, with slightly irregular sides. One end is rounded, and pierced nearby, the nail *in situ*; it narrows towards the other end, which is missing. There are wood remains on one face.
- L: 65 mm; W: 25 mm; Th: 5 mm; L (nail): 26 mm
- Site 2, 121, hillwash, Medieval, OR 844
- 284 Plate, broken at both ends and along one side; it is pierced, the nail shank *in situ*.
- L: 55 mm; W: 23 mm; Th: 9 mm
- Site 2, 121, hillwash, Medieval, OR 879
- 285 Hinge strap, bent in the centre (Figs 42, 110). The sides are convex over the upper third of its length; it narrows towards the base, which is missing but had been curved over. At the head, it curved over to form a loop, now missing. It is pierced twice at the widest point, the holes arranged transversely, the nails *in situ*. Wood remains survive on the inner face.
- L: 120 mm; W: 39 mm; Th: 7 mm; L (nail): 12 mm; W (head): 17 mm
- Site 2, 121, hillwash, Medieval, OR 904a
- 286 Strap (Figs 46, 110), with parallel sides; at one end it is widened and rounded, and there is a hole formed by punching. The body of the strap is pierced twice, the nails *in situ*, the shanks incomplete. There are wood remains on one face.
- L: 95 mm; W: 30 mm; Th: 6 mm; L (nails): 18 mm; W (head): 13 mm
- Site 2, 121, hillwash, Medieval, OR 904b
- 287 Two hinge straps linked together (Figs 39, 110).
- a) narrows towards the base, where it has a rounded, pierced terminal; the nail is *in situ*, the shank tip missing. At the head, it narrows, with convex shoulders, and curves over to form a loop. It is pierced near the head. Wood remains survive on one face.
- b) narrows towards the base, where there is a rounded, pierced terminal. At the head, it has been drawn out and curved around to form a closed loop. It is pierced near the head, the nail *in situ*. There are wood remains on one face.
- a) L: 162 mm; W: 30 mm; Th: 10 mm; L (nail): 25 mm; W (head): 13 mm; Th (shank): 6 mm
- b) L: 144 mm; W: 27 mm; Th: 8 mm
- Site 2, 121, hillwash, Medieval, OR 917a, 917b
- 288 Strap fragment. It is pierced, the nail *in situ*, with wood remains on one face.
- L: 27 mm; W: 27 mm; Th: 7 mm
- Site 2, 121, hillwash, Medieval, OR 917c
- 289 Strap (Figs 46, 110), with parallel sides. One end is rounded, pierced nearby, the other missing.
- L: 70 mm; W: 22 mm; Th: 6 mm
- Site 2, 121, hillwash, Medieval, OR 926
- 290 Hinge strap (Figs 40, 110). It narrows towards the base, where there is a rounded, pierced terminal, the nail *in situ*, the shank incomplete. At the head, it has been drawn out and curved round to form an open loop. It is pierced near the head, the nail *in situ*, the shank incomplete.
- L: 158 mm; W: 30 mm; Th: 7 mm; L (nail in terminal): 14 mm; W (head): 9 mm; L (other nail): 10 mm; W (head): 15 mm
- Site 2, 121, hillwash, Medieval, OR 927a
- 291 Hinge strap (Figs 43, 110). It narrows towards the base, where there is a rounded, pierced terminal. The head is

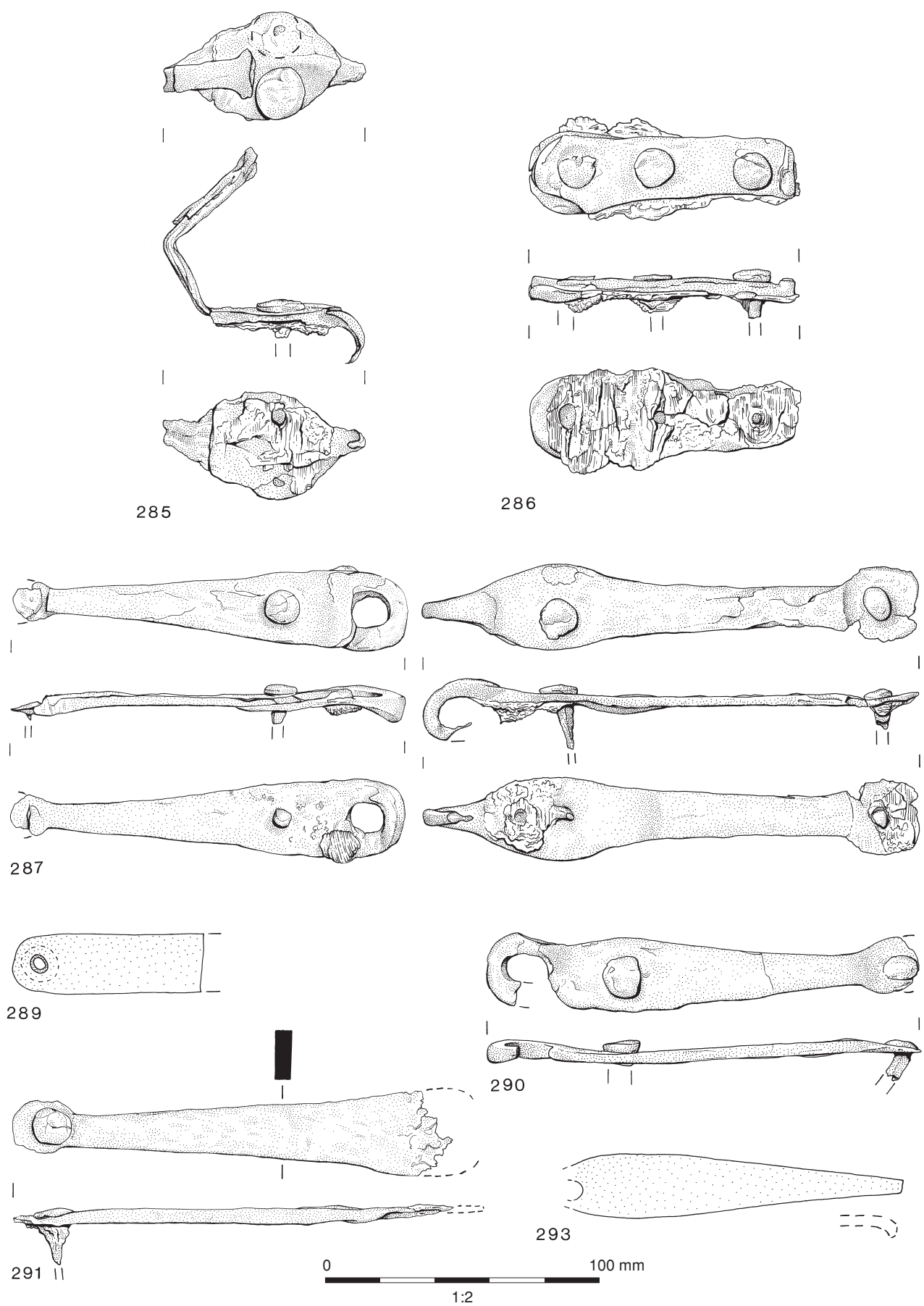


Figure 110: Iron 5

- missing but was pierced near to it.
L: 60 mm; W: 30 mm; Th: 7 mm
Site 2, 121, hillwash, Medieval, OR 927b
- 292 Strap fragment, pierced.
L: 24 mm; W: 24 mm
Site 2, 121, hillwash, Medieval, OR 927c
- 293 Hinge strap (Figs 38, 110). It narrows towards the base, where it curves over; at the head, it narrows, with convex shoulders, and presumably curved over to form a loop, now missing. There is an incomplete nail hole at the point of breakage.
L: 122 mm; W: 21 mm; Th: 5 mm
Site 2, 121, hillwash, Medieval, OR 1281
- 294 Hinge strap (Figs 41, 111), with slightly convex sides. It narrows towards the base, which is missing but was curved over. At the head, it curved over to form a loop, now detached, which is linked to the head of 295. It is pierced at its widest point, the nail *in situ*.
L: 130 mm; W: 25 mm; Th: 7 mm; W (head of nail): 15 mm
Site 2, 121, hillwash, Medieval, OR 1335b
- 295 Hinge strap (Figs 43, 111). It narrows towards the base, which is missing, and is also broken at the head, where it was drawn out and curved around to form a closed loop. A little below the break is a localised widening around a nail hole, the nail *in situ*.
L: 133 mm; W: 20 mm; Th: 7 mm; W (head): 20 mm
Site 2, 121, hillwash, Medieval, OR 1335c
- 296 Strap (Figs 46, 111), with roughly straight and parallel sides, one end rounded, the other missing. It is pierced three times, two of the holes being rectangular.
L: 85 mm; W: 10 mm; Th: 6 mm
Site 2, 121, hillwash, Medieval, OR 1352a
- 297 ?Corner bracket (Figs 45, 111), with parallel sides. It is curved over and broken at one end; at the other, there is a rounded, pierced terminal.
L: 48 mm; W: 15 mm; Th: 6 mm
Site 2, 121, hillwash, Medieval, OR 1352b
- 298 Strap (Figs 45, 111), with a rounded, pierced terminal at one end, broken at the other.
L: 75 mm; W: 16 mm; Th: 4 mm
Site 2, 169, hillwash, Medieval, OR 450
- 299 Hinge strap (Figs 42, 111), with slightly convex sides, and a slightly triangular cross-section; it narrows towards the base, which is missing. At the head, it narrows and curves over into a loop, now largely missing.
L: 80 mm; W: 25 mm; Th: 8 mm
Site 2, 382, stone spread, Medieval/Post-medieval, OR 1198a
- 300 End of a strap, rounded, and pierced.
L: 25 mm; W: 25 mm; Th: 6 mm
Site 2, 382, stone spread, Medieval/Post-medieval, OR 1198b
- 301 Strap, very corroded. It has straight parallel sides; one end is rounded, pierced nearby, the nail *in situ*. The other end is broken. There are wood remains on one face.
L: 42 mm; W: 10 mm; Th: 6 mm
Site 2, 41, tumble from churchyard wall, Post-medieval, OR 2084
- 302 End of strap. There are wood remains on one face.
L: 30 mm; W: 20 mm; Th: 6 mm
Site 2, 36, hillwash, Post-medieval, OR 1442b
- 303 Corner bracket (Figs 45, 111). One arm survives, with convex sides, and narrows to a rounded, pierced terminal. There are wood remains on its inner face.
L: 63 mm; W: 20 mm; Th: 5 mm
Site 2, 71, hillwash, Post-medieval, OR 1908
- 304 Hinge strap pierced (Figs 44, 111). It has slightly convex sides, and narrows towards the base, which is missing; the head is also missing. There are wood remains on one face.
L: 105 mm; W: 28 mm; Th: 5 mm
Site 2, 26, Topsoil, OR 1206d
- 305 Strap, broken at one end (Figs 81, 111). It narrows towards the other, where there is a bifurcated terminal, the arms recurved.
L: 58 mm; W: 8 mm; Th: 3 mm
Site 2, 26, Topsoil, OR 1206e
- 306 Hinge strap bent (Figs 38, 111). It narrows towards the base, where it curves over; at the head, it narrows, with sloping shoulders, and curves over into a loop, which is now incomplete. It is pierced near the head, the nail shank *in situ*.
L: 120 mm; W: 22 mm; Th: 7 mm
Site 2, 162, Unstratified, OR 377
- 307 Hinge strap (Figs 39, 111), with a triangular cross-section; it narrows slightly towards the base, where there is a rounded, pierced terminal, the nail *in situ*. At the head, it narrows, with convex shoulders, and curves over to form a loop, now largely missing. It is pierced near the head.
L: 180 mm; W: 32 mm; Th: 9 mm; L (nail): 12 mm; W (head): 12 mm
Site 2, 162, Unstratified, OR 619a
- 308 End of a strap, with a rounded, pierced terminal (Figs 45, 111).
L: 30 mm; W: 20 mm; Th: 6 mm
Site 2, 162, Unstratified, OR 619b
- 309 Corner bracket (Figs 45, 111). One half is largely missing, the surviving arm narrowing towards a rounded, pierced terminal, now incomplete. There are wood remains on the inner face.
L: 53 mm; W: 18 mm; Th: 4 mm
Site 2, 162, Unstratified, OR 619c

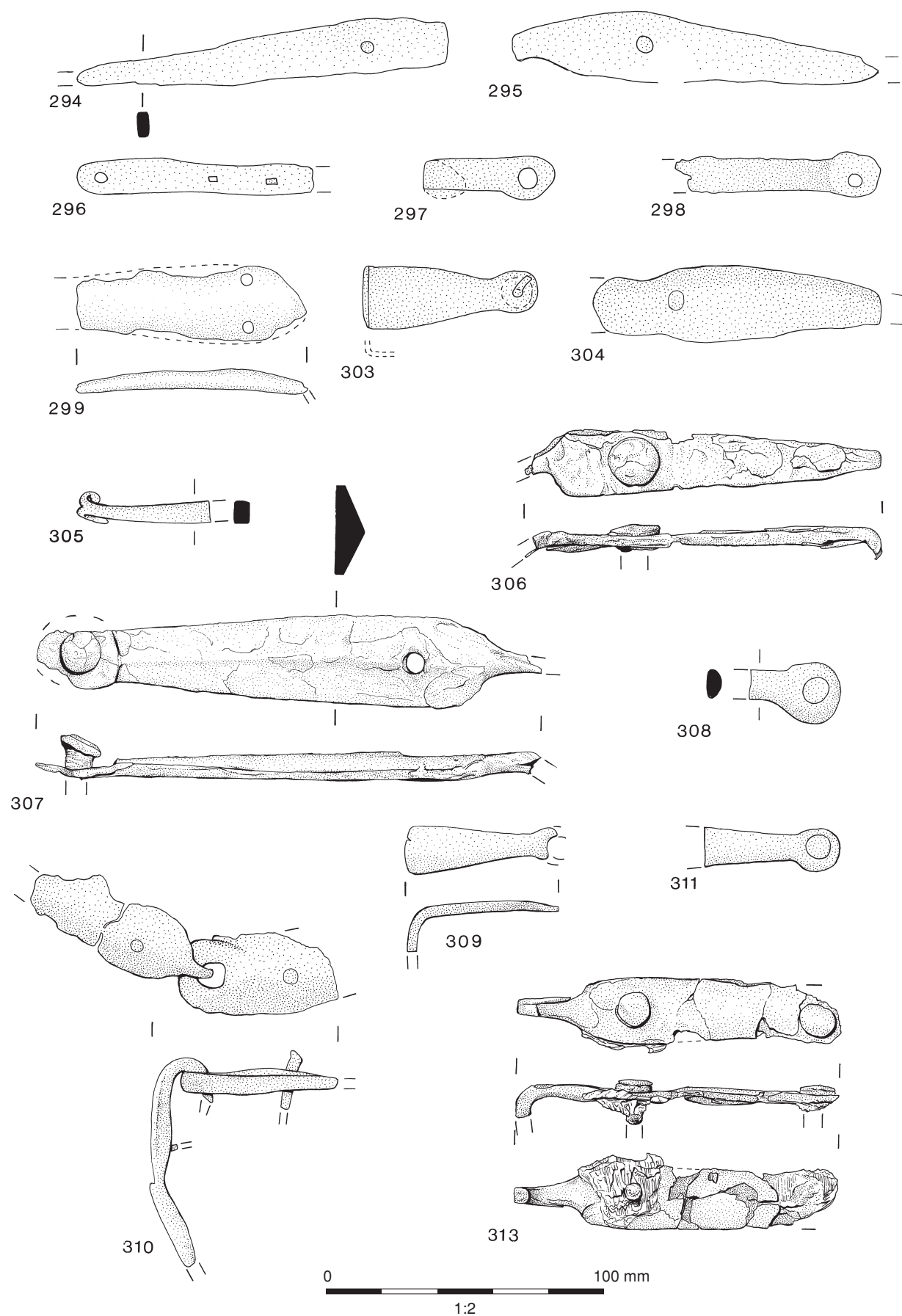


Figure 111: Iron 6

- 310 Hinge strap, in two pieces (Figs 40, 111).
a) narrows towards the base, where there is a rounded, pierced terminal. At the head, it narrows, with sloping shoulders, and curves over into a loop.
b) is a hinge strap, linked to a). It has parallel sides over most of its length but narrows towards the base, which is missing. At the head, it has been drawn out and curved over to form a closed loop. It is pierced in the centre.
a) L: 75 mm; W: 29 mm; Th: 5 mm
b) L: 55 mm; W: 29 mm; Th: 5 mm
Site 2, 162, Unstratified, OR 1020b, 1020c
- 311 Corner bracket (Figs 45, 111). The longer arm narrows to a rounded, pierced terminal, the nail *in situ*. There are wood remains on one face.
L (arms): 47 mm, 17 mm; W: 10 mm; Th: 6 mm
Site 2, 162, Unstratified, OR 1020d
- 312 Plate fragment, pierced at one end, the nail *in situ*.
L: 29 mm; W: 10 mm
Site 2, 162, Unstratified, OR 1020e
- 313 Hinge strap (Figs 41, 111). It narrows slightly towards the base, which is rounded. At the head, it narrows gradually and curves over to form a loop, now incomplete. It is pierced twice and there are wood remains.
L: 112 mm; W: 20 mm; Th: 7 mm
Site 2, 162, Unstratified, OR 1354b
- 314 Hinge strap (Figs 43, 112). It narrows slightly towards the base, where there is a rounded, pierced terminal. At the head, it has been drawn out and curved around to form an open loop. It is pierced twice, the nails *in situ*.
L: 95 mm; W: 22 mm; Th: 7 mm; L (nails): 19 mm; W: 10 mm
Site 2, 162, Unstratified, OR 1354c
- 315 Two associated strap fragments (Figs 41, 112).
a) is a hinge strap, which narrows towards the base, which is missing. At the head, it narrows and is curved over to form a loop. It is pierced, the nail *in situ*. There are wood remains on one face.
b) is a strap fragment, part of the base of 315a.
a) L: 83 mm; W: 20 mm; Th: 7 mm; L (nail): 12 mm; W (head): 13 mm
b) L: 21 mm; W: 16 mm
Site 2, 162, Unstratified, OR 1417a, 1417b
- 316 Plate, pierced, very corroded. Both ends are missing, and it is broken along one side.
L: 64 mm; W: 34 mm
Site 2, 162, Unstratified, OR 1417c
- 317 Two hinge straps linked together (Figs 41, 44, 112).
a) has slightly convex sides, the lower part missing. At the head, it narrows and curves over to form a loop. It is pierced near the head.
b) is the loop of a hinge strap, linked to a).
a) L: 70 mm; W: 15 mm; Th: 7 mm
b) L: 25 mm; W: 16 mm
Site 2, 162, Unstratified, OR 1635d, 1635e
- 318 Strap, with parallel sides. One end is rounded, and pierced nearby, the nail *in situ*, the other end broken.
L: 55 mm; W: 15 mm; Th: 7 mm
Site 2, 162, Unstratified, OR 1635f
- 319 Strap, with convex sides, both ends missing; towards one end, it is bent upwards. It is pierced twice, the nails *in situ*.
L: 68 mm; W: 25 mm; L (nails): 25 mm
Site 2, 162, Unstratified, OR 1635g
- 320 Plate, irregular shape. It is pierced, the nail *in situ*.
L: 32 mm; W: 30 mm
Site 2, 162, Unstratified, OR 1635h
- 321 Hinge strap (Figs 42, 112), with a triangular cross-section. The upper part has convex sides, the lower part concave sides. It narrows towards the base, where it has a flattened, rounded, pierced terminal. At the head, it narrows and curves over to form a loop, now incomplete. It is pierced twice, the nails *in situ*, the shanks largely missing; they have non-ferrous plating. There are wood remains on one face.
L: 122 mm; W: 36 mm; Th: 9 mm; L (nails): 12 mm; W (head): 11 mm; Th (shank): 4 mm
Site 2, 162, Unstratified, OR 1713b
- 322 Hinge strap (Figs 43, 112). It narrows from a point $c\%$ along its length from the head to the base, where it is curved over. At the head, it has been drawn out and curved around to form a closed loop. It is pierced, the nail *in situ*, the shank incomplete.
L: 135 mm; W: 24 mm; Th: 4 mm; L (nails): 9 mm; W: 15 mm
Site 2, 162, Unstratified, OR 1713c
- 323 Hinge strap (Figs 43, 112). It narrows towards the base, where it probably curved over; at the head, it has been drawn out and curved around to form a loop, now largely missing. It is pierced once near the head, the nail *in situ*.
L: 115 mm; W: 20 mm; Th: 8 mm
Site 2, 162, Unstratified, OR 1713d
- 324 Strap, broken at both ends, and pierced near one of them.
L: 43 mm; W: 13 mm
Site 2, 162, Unstratified, OR 1713e
- 325 Hinge strap (Figs 43, 112). It narrows towards the base, where it is curved over. At the head, it has been drawn out and curved over to form a closed loop. It is pierced near the head.
L: 120 mm; W: 20 mm; Th: 8 mm
Site 2, 162, Unstratified, OR 1716b
- 326 Two hinge straps linked together (Figs 41, 43, 112).
a) narrows towards the base, where it is curved over. At the head, it has been drawn out and curved over to form

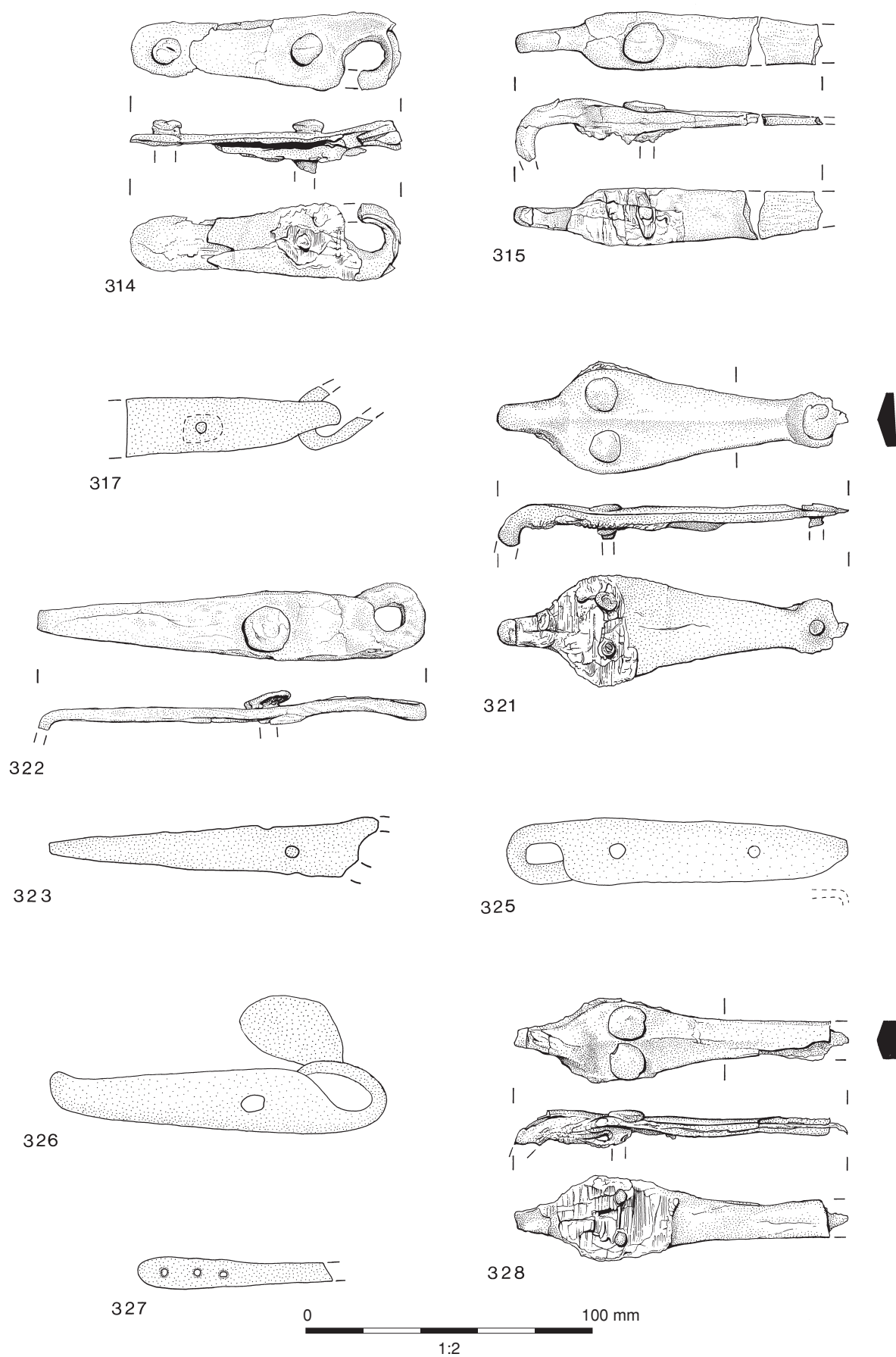


Figure 112: Iron 7

- a closed loop. It is pierced near the head.
b) is incomplete but probably narrowed towards the base; at the head, it narrows, with convex shoulders, to form a loop.
a) L: 120 mm; W: 22 mm; Th: 8 mm
b) L: 55 mm; W: 30 mm; Th: 5 mm
Site 2, 162, Unstratified, OR 1716c, 1716d
- 327 Strap, narrowing (Figs 46, 112). The wider end is rounded, the other missing. It is pierced three times.
L: 65 mm; W: 10 mm; Th: 6 mm
Site 2, 162, Unstratified, OR 1716e
- 328 Strap (Figs 42, 112). The upper half has convex sides, and it narrows towards the base, which is missing. At the head, it narrows and curves over to form a loop, now largely missing. It is pierced twice at its widest point, the holes arranged transversely.
L: 108 mm; W: 23 mm; Th: 8 mm
Site 2, 162, Unstratified, OR 1815d
- 329 The end of a hinge strap, with a loop formed by drawing out and curving over.
L: 35 mm; W: 18 mm; Th: 6 mm
Site 2, 162, Unstratified, OR 1815e
- 330 Plate, pierced.
L: 19 mm; W: 13 mm; Th: 4 mm
Site 2, 162, Unstratified, OR 1815f
- 331 Hinge strap (Figs 41, 113). It has one straight side and one slightly convex; it narrows towards the base, which is missing. At the head, it has been drawn out and curved around to form a loop, now incomplete. Fused to the loop are the vestiges of the loop of a second strap. It is pierced once, the nail *in situ*.
L: 108 mm; W: 19 mm
Site 2, 162, Unstratified, OR 2431d
- 332 Strap, pierced, with parallel sides (Figs 41, 113). It is broken at one end and curved over at the other to form a loop, now largely missing.
L: 40 mm; W: 17 mm
Site 2, 162, Unstratified, OR 2431e
- 333 Plate. It is very corroded, roughly rectangular, and pierced once.
L: 51 mm; W: 30 mm
Site 2, 162, Unstratified, OR 2431f
- L (arms): 80 mm; W (arms): 15 mm; Th (arms): 5 mm;
L (plate): 35 mm; W (plate): 22 mm
Site 2, 342, cemetery level, Early medieval, OR 1226
- 336 A handle (Figs 47, 113). It is shaped like a figure of eight, but one loop is larger than the other; the smaller loop has the remains of another link fused to it.
L: 88 mm; W: 63 mm
Site 2, 342, cemetery level, Early medieval, OR 1229
- 337 A U-eyed hinge. The straps widen away from the eye. Each strap is pierced twice, the nails *in situ*.
L: 137 mm; W: 45 mm; W (straps): 52 mm; L (nails): 52 mm, 43 mm; W (heads): 22 mm, 30 mm; Th (shanks): 6 mm
Site 2, 1204, metalled surface, Medieval, OR 2439
- 338 A U-eyed hinge (Figs 81, 113). The straps widen away from the eye. Each strap is pierced twice, the nails *in situ*. There are wood remains.
L: 133 mm; W: 39 mm; W (straps): 45 mm; L (nails): 44 mm; W (heads): 24 mm, 22 mm; Th (shanks): 8 mm
Site 2, 1204, metalled surface, Medieval, OR 2440
- 339 Stapled hasp (or hinge strap; Figs 46, 113). It has roughly straight sides, and one end is rounded, with a punched hole nearby, in which there are the remains of either the loop of another hinge strap or a staple; the other end is missing.
L: 75 mm; W: 30 mm
Site 2, 1099, demolition of croft, Medieval/Post-medieval, OR 1974
- 340 Guide arm of a hinge pivot.
L: 45 mm; Th: 12 mm; L (shank): 65 mm; W (shank): 15 mm
Site 2, 162, Unstratified
- 341 ?Hook.
L: 34 mm; W: 17 mm; Th: 7 mm
Site 2, 162, Unstratified, OR 1557
- 342 Ring or washer.
Diam: 23 mm; Th: 7 mm
Site 2, 162, Unstratified, OR 1703

Locks and keys

(For a reconstruction of the locks in which the sprung sliding bolts were used, see Figure 49). All the central plates have the edges curved over.

Miscellaneous fittings

- 334 A ring of rectangular cross-section (Figs 47, 113).
Diam: 40 mm; Th: 4 mm
Site 2, 189, fill of grave 190, Early medieval, OR 498
- 335 A hasp, originally L-shaped (Figs 46, 113). At the head, there is a punched hole, while at the base it has been formed into a small, roughly triangular, plate, which is pierced.
- 343 A sprung sliding lock bolt. It is probably a fragment of the central plate, broken at both ends; the sides curve inwards to the base of a projection at one end. It is slightly curved in cross-section.
L: 35 mm; W: 26 mm; Th: 5 mm
Site 2, 713, cemetery level, Early medieval, OR 1648
- 344 Sprung sliding lock bolt, in two pieces (Fig 113). The central plate narrows towards one end; at the other, there are sloping shoulders. An arm projects from each

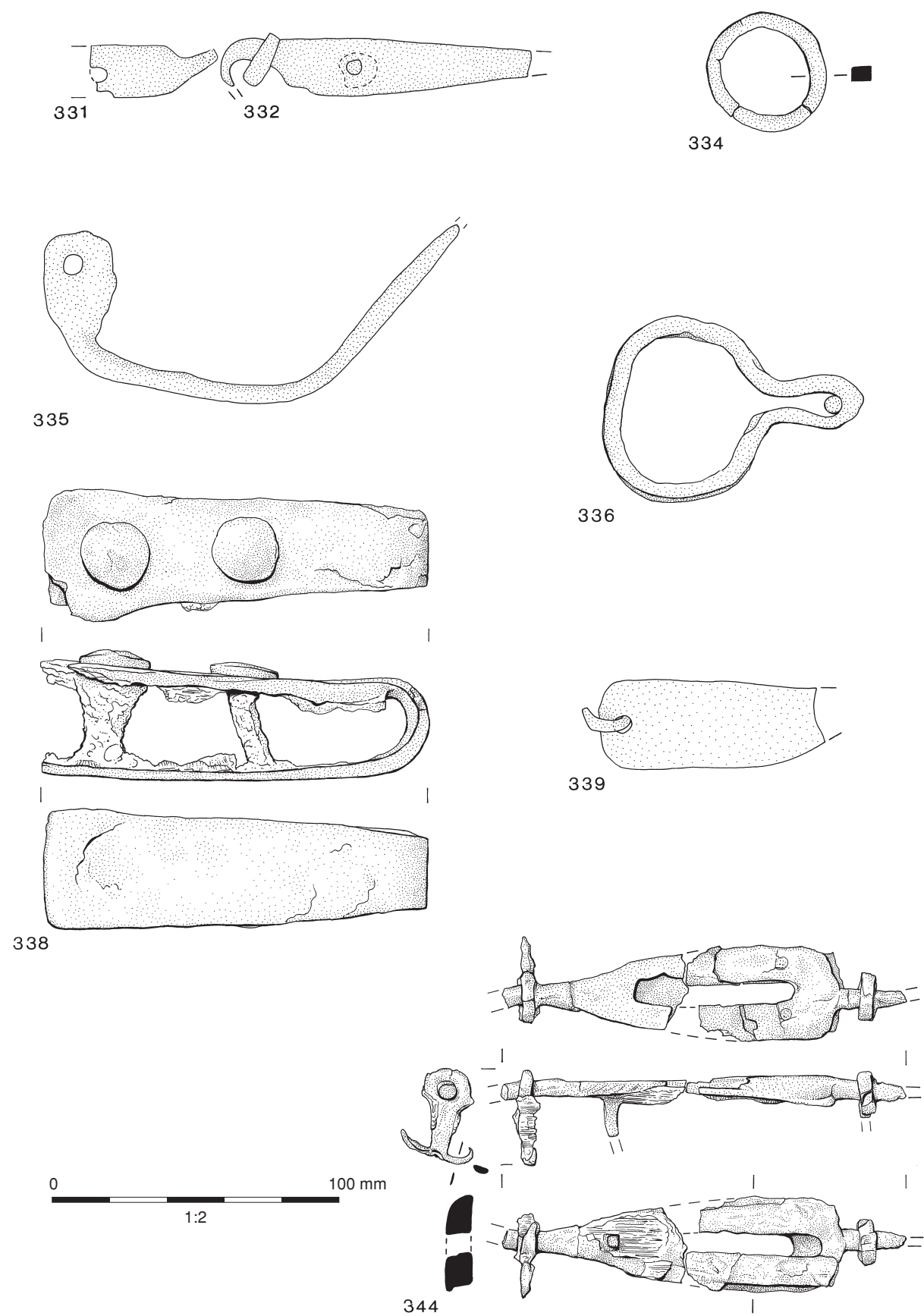


Figure 113: Iron 8

- end, both now incomplete; these have the remains of looped staples corroded to them. The plate has an axial central slot, with a hole on either side at the wider end. Corroded on to the plate is a leaf spring, which has a nail hole at one end, the nail *in situ*. Wood remains survive.
L: c 140 mm; W (plate): 32 mm; Th: 6 mm; L (looped staples): 34 mm; W (looped staples): 16 mm
Site 2, 665, cemetery level, Early medieval, OR 1606
- 345 Sprung sliding lock bolt (Figs 48, 114). The central plate is roughly oval but with straight shoulders at one end, which is wider than the other. The arm projecting from the narrower end has a rounded cross-section and tapers; the arm projecting from the wider end is incomplete. There are the remains of looped staples, corroded to both arms. The plate has an axial central slot, with a hole on either side at the wider end; running up to each hole parallel to the slot is a shallow groove. The remains of a spring, which has a nail hole at one end, are corroded on to the plate. Wood remains survive.
L: 132 mm; W (plate): 29 mm; Th: 6 mm
Site 2, 887, fill of grave 888, Early medieval, OR 1639
- 346 Key, the bow largely missing. The stem is solid up to the tip, where it is hollow; the bit is incomplete.
L: 50 mm; W (at bit): 15 mm; Th (stem): 6 mm
Site 2, 1197, stone spread, Medieval?, OR 2091
- 347 Sprung sliding lock bolt (Figs 48, 114), in four pieces and badly corroded. The central plate has convex sides and has arms projecting from each end, one incomplete, with a looped staple fused to each. The plate has a central slot, with a hole on either side at one end. Parts of a spring are corroded on. Wood remains survive.
L: 192 mm; W: 45 mm; Th: 8 mm
Site 2, 121, hillwash, Medieval, OR 471
- 348 Sprung sliding lock bolt (Figs 48, 114). The central plate has straight parallel sides before curving inwards towards one end. The arms project from each end, both now incomplete, and have a looped staple corroded to them. The central plate has two holes near the wider end. Wood remains survive on one face.
L: 123 mm; W: 35 mm; Th: 6 mm
Site 2, 121, hillwash, Medieval, OR 484
- 349 Sprung sliding lock bolt (Figs 48, 114). The central plate is curved in section and narrows slightly towards one end, where it is broken at the base of a projecting arm. At the wider end, there are rounded corners and an arm, now incomplete, projects; a looped staple is corroded to it. The plate has an axial central slot, with a hole on each side at the wider end. The remains of springs survive, with a nail hole at one end. Wood remains survive.
L: 112 mm; W (plate): 37 mm; Th: 4 mm; L (looped staple): 32 mm; W (looped staple): 17 mm
Site 2, 121, hillwash, Medieval, OR 1872
- 350 Slide key bit. ?Originally L-shaped, with two prongs.
L: 25 mm; W: 15 mm; Th: 5 mm
Site 2, 162, Unstratified, OR 1815
-
- ### Dress Fittings
-
- 351 Escutcheon (Pl 34), roughly broken at the upper end, and tapering towards the lower end, which is also broken away. The long edges are symmetrically convex, and form a slight shoulder just below the upper end.
L: 30 mm; W: 13 mm; Th: 4 mm
Site 1, 76, layer, Earliest activity, OR 279
- 352 Boot plate, incomplete.
L: 43 mm; W: 7 mm; Th: 2 mm
Site 1, 1, Topsoil, OR 253
- 353 Boot plate. Incomplete, with three holes.
L: 63 mm; W: 7 mm; Th: 2 mm
Site 1, 1, Topsoil, OR 262
- 354 Shank of ringed pin, bent in the centre (Figs 50, 114).
L: 100 mm
Site 2, 1203, layer, Medieval, OR 1979
- 355 Neck and goad of a prick spur (Figs 50, 114). The goad has a rectangular cross-section and tapers to a point; it is plated with non-ferrous metal.
L: 43 mm; W: 12 mm
Site 2, 36, hillwash, Post-medieval, OR 1203
- 356 Boot plate, complete.
L: 67 mm; W: 72 mm; Th: 3 mm
Site 2, 26, Topsoil, OR 1206
- 357 Button.
Diam: 9 mm
Site 2, 90, demolition churchyard wall, Modern, OR 471
- 358 Boot plate fragment, one hole.
L: 36 mm; W: 12 mm; Th: 3 mm
Site 2, 162, Unstratified, OR 1716
-
- ### Horseshoes
-
- 359 Horseshoe nail, D-shaped head.
L: 30 mm; W (head): 11 mm
Site 1, 55, fill of ditch 67, Early medieval, OR 189
- 360 Horseshoe nail, very corroded, with D-shaped head.
L: 28 mm; W (head): 18 mm; Th: 4 mm
Site 1, 13, garden soil, Medieval/Post-medieval, OR 48

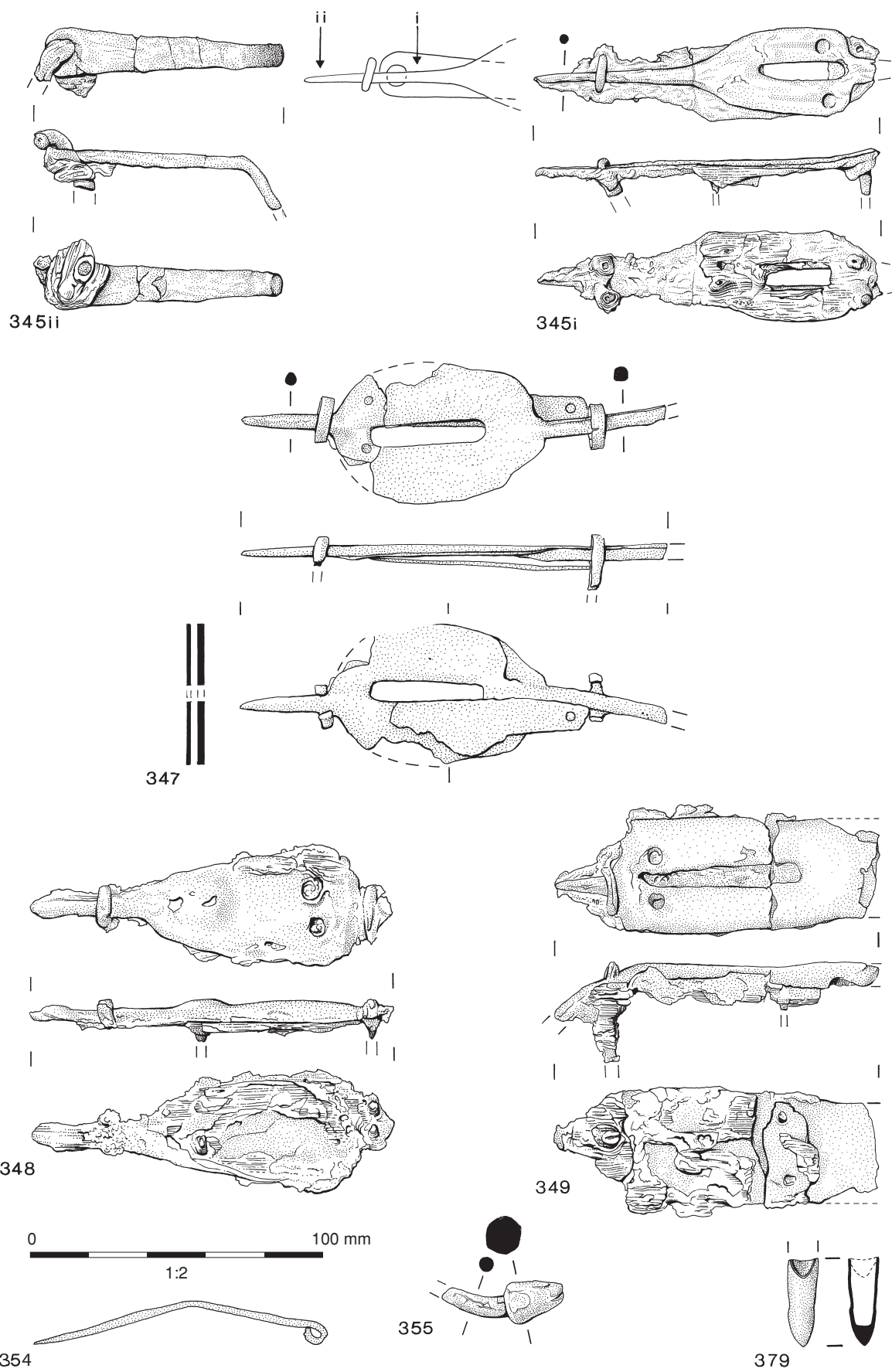


Figure 114: Iron 9

- 361 Horseshoe nail, with D-shaped head.
L: 43 mm; W (head): 16 mm
Site 2, 121, hillwash, Medieval, OR 353
- 362 Horseshoe nail, with D-shaped head, the shank tip curved.
L: 30 mm; W (head): 10 mm
Site 2, 162, Unstratified, OR 619
- 363 Horseshoe nail, with a roughly D-shaped head, the shank tip curved.
L: 32 mm; W (head): 11 mm
Site 2, 121, hillwash, Medieval, OR 901
- 364 Horseshoe nail, with a D-shaped head, the shank largely missing.
L: 15 mm; W (head): 15 mm
Site 2, 169, hillwash, Medieval, OR 588
- 365 Horseshoe nail, with a convex head, the tip missing.
L: 25 mm; W (head): 14 mm
Site 2, 169, hillwash, Medieval, OR 733
- 366 Horseshoe nail, D-shaped, the shank bent in the middle at 90°, the tip clenched.
L: 37 mm; W (head): 10 mm
Site 2, 181, hillwash, Medieval, OR 479
- 367 Complete horseshoe, with a smooth outer edge, and three roughly rectangular holes in each branch.
L: 106 mm; W (overall): 105 mm; W (branch): 36 mm
Site 2, 670, fill of croft boundary ditch 698, Medieval, OR 1372
- 368 Branch of a horseshoe. It has two rectangular holes, the nails *in situ*, and a smooth outer edge.
L: 115 mm; W: 25 mm; Th: 11 mm
Site 2, 26, Topsoil, OR 1206
- 369 The branch end of a horseshoe, with a wavy outer edge, and two countersunk holes.
L: 55 mm; W: 16 mm
Site 2, 147, fill of grave, Post-medieval, OR 362
- 370 Branch fragment of a horseshoe, with three rectangular holes.
L: 70 mm; W: 24 mm
Site 2, 162, Unstratified, OR 1635
- 371 Branch fragment of a horseshoe, with three rectangular holes, the nails *in situ*.
L: 47 mm; W: 24 mm
Site 2, 162, Unstratified, OR 1635
- 372 Horseshoe nail, with a flattened, D-shaped head.
L: 32 mm; W (head): 15 mm
Site 2, 162, Unstratified, OR 1635
- 373 Horseshoe nail, with a trapezoidal head, the shank tip missing.
L: 24 mm; W (head): 12 mm
Site 2, 162, Unstratified, 1815

- 374 Branch end of a horseshoe, with a wavy outer edge.
L: 67 mm; W: 15 mm
Site 2, 162, Unstratified, OR 2428
- 375 Complete horseshoe, turned up at the front, with no calkins.
L: 180 mm; W: 125 mm; Th: 10 mm
Site 2, 162, Unstratified, OR 2431
- 376 Branch end of a horseshoe. It probably had a wavy edge, and there is part of one countersunk hole, and a calkin.
L: 53 mm; W: 23 mm; Th: 8 mm
Site 2, 162, Unstratified, OR 2431
- 377 Very corroded horseshoe, only the branch end.
L: 55 mm; W: 20 mm; Th: 5 mm
Site 3, 895, fill of linear feature 904, Post-medieval, OR 1672

Arrowheads

- 378 Barbed and socketed arrowhead.
L: 50 mm; W (blade): 19 mm; Diam (socket): 8 mm
Site 2, 121, hillwash, Medieval, OR 471
- 379 Arrowhead (Figs 81, 114), socketed, bullet shaped, and copper plated.
L: 30 mm; Diam: 10 mm
Site 2, 36, hillwash, Post-medieval, OR 1203
- 380 Barbed and socketed arrowhead.
L: 62 mm; W (blade): 20 mm; Diam (socket): 10 mm
Site 2, 36, hillwash, Post-medieval, OR 1811
- 381 Socketed, tapering blade, with a rectangular cross-section.
L: 105 mm; Diam (socket): 15 mm
Site 2, 139, churchyard layer, Medieval/Post-medieval, OR 873

Scrap

- 382 Very corroded large iron bar.
Site 1, 18, churchyard wall, Medieval, OR 83
- 383 Large iron bar.
Site 2, 162, Unstratified, OR 2432

Strips

All have a rectangular cross-section unless stated otherwise.

- 384 Strip, broken at both ends, it narrows towards one end, and curves around at the other.
L: 38 mm; W: 18 mm; Th: 5 mm
Site 1, 87, layer, Early medieval, OR 237
- 385 Strip, in two pieces.
L: 23 mm, 17 mm; W: 4 mm
Site 2, 81, Disturbed Natural Subsoil, OR 229
- 386 Strip.
L: 60 mm; W: 7 mm
Site 2, 342, cemetery level, Early medieval, OR 1293

- 387 Strip, very corroded.
L: 57 mm; W: 12 mm
Site 2, 539, fill of grave 538, Early medieval, OR 1336
- 388 C-shaped strip.
Diam: 20 mm; Th: 5 mm
Site 2, 172, occupation layer, Structure Y, Early medieval, OR 515
- 389 Tapering strip.
L: 90 mm; W: 9 mm
Site 2, 219, hillwash, Early medieval/Medieval, OR 577
- 390 Strip, curves around at both ends.
L: 95 mm
Site 2, 358, churchyard boundary bank, Eleventh/twelfth century, OR 1500
- 391 Strip.
L: 35 mm; W: 5 mm
Site 2, 534, churchyard boundary bank, Eleventh/twelfth century, OR 1380
- 392 Strip.
L: 28 mm; W: 5 mm
Site 2, 1235, lowest hillwash, Early medieval/Medieval, OR 2307
- 393 Strip, curves towards one end.
L: 90 mm; Diam: 6 mm
Site 2, 120, stone spread, Medieval, OR 519
- 394 Strip, curved over at one end.
L: 38 mm; W: 3 mm
Site 2, 170, fill of churchyard boundary ditch 215, Medieval, OR 966
- 395 L-shaped strip.
L (arms): 33 mm; W: 6 mm
Site 2, 28, churchyard wall, Medieval, OR 978
- 396 Strip, tapers towards one end, where it is curved.
L: 40 mm; W: 3 mm
Site 2, 1380, fill of ditch 1421, Medieval, OR 2372
- 397 Strip, curves into a loop at one end. At the other, it curves over in plane at 90°.
L: 55 mm; W (loop): 10 mm; Th: 3 mm
Site 2, 1203, layer, Medieval, OR 2016
- 398 Strip.
L: 20 mm; W: 7 mm
Site 2, 1269, layer, Medieval/Post-medieval, OR 2153
- 399 Strip, curves into a loop at one end, and is broken at the other.
L: 55 mm
Site 2, 1190, stone spread, Medieval, OR 2011
- 400 Strip.
L: 50 mm; W: 7 mm
Site 2, 1190, stone spread, Medieval, OR 2018
- 401 Strip with a slightly irregular shape.
L: 98 mm; W: 7 mm
Site 2, 121, hillwash, Medieval, OR 430
- 402 Strip widens near one end, and is broken at the other.
L: 150 mm; W: 13 mm
Site 2, 121, hillwash, Medieval, OR 436
- 403 Strip, perhaps the C-shaped ?loop off a hinge strap.
L: 41 mm; W: 38 mm; Th: 10 mm
Site 2, 121, hillwash, Medieval, OR 1335
- 404 Two strips.
a) L: 22 mm; W: 5 mm
b) L: 40 mm; W: 2 mm
Site 2, 121, hillwash, Medieval, OR 1355
- 405 Strip, with a slightly irregular shape.
L: 48 mm
Site 2, 169, hillwash, Medieval, OR 594
- 406 L-shaped strip. The longer arm widens towards the elbow.
L (arms): 41 mm, 20 mm
Site 2, 382, stone spread, Medieval, OR 1223
- 407 Strip, broken at one end.
L: 50 mm; W: 6 mm
Site 2, 578, demolition of croft, Medieval/Post-medieval, OR 1387
- 408 Strip, in two pieces.
L: 108 mm; W: 13 mm; Th: 7 mm
Site 2, 583, layer, Medieval/Post-medieval, OR 1377
- 409 Strip.
L: 20 mm; W: 10 mm
Site 2, 1016, demolition of croft, Medieval/Post-medieval, OR 1909
- 410 Strip, one end broken, and this has been widened and flattened, then it tapers at the other. It has a rounded cross-section.
L: 55 mm; W: 6 mm
Site 2, 36, hillwash, Post-medieval, OR 1203
- 411 Three strips.
a) L: 20 mm; W: 6 mm
b) L: 13 mm; W: 6 mm
c) L: 11 mm; W: 6 mm
Site 2, 36, hillwash, Post-medieval, OR 1440
- 412 Two strips.
a) L: 27 mm; W: 15 mm; Th: 8 mm
b) One face convex, the ends broken.

- L: 60 mm; W: 22 mm; Th: 10 mm
Site 2, 36, hillwash, Post-medieval, OR 1824
- 413 Strip, broken at both ends, and curved towards one of them.
L: 55 mm; W: 5 mm
Site 2, 26, Topsoil, OR 1784
- 414 Three strips.
a) Very corroded, broken at one end, and tapers at the other.
b) L-shaped, tapering at one end.
c) Bent a little at one end.
a) L: 38 mm; W: 9 mm
b) L (arms): 90 mm; W: 3 mm
c) L: 43 mm; W: 5 mm
Site 2, 162, Unstratified, OR 619
- 415 Strip.
L: 34 mm; W: 10 mm
Site 2, 162, Unstratified, OR 1354
- 416 Strip, broken at one end, tapering at the other.
L: 52 mm; Th: 12 mm
Site 2, 162, Unstratified, OR 1635
- 417 Two strips.
a) Tapers.
b) C-shaped.
a) L: 68 mm
b) Diam: 20 mm
Site 2, 162, Unstratified, OR 1716
- 418 Strip.
L: 43 mm; W: 5 mm
Site 2, 162, Unstratified, OR 1815
- 419 Strip.
L: 35 mm; W: 5 mm
Site 2, 162, Unstratified, OR 2414
- 420 Plate.
L: 23 mm; W: 7 mm
Site 1, 55, layer, Early medieval, OR 189
- 421 Plate.
L: 35 mm; W: 15 mm
Site 1, 53, metallated surface, Early medieval, OR 173
- 422 Strip, with two straight sides, and one straight end.
L: 33 mm; W: 20 mm
Site 1, 25, layer, Medieval/Post-medieval, OR 1175
- 423 Strip, very corroded.
L: 55 mm; W: 25 mm; Th: 2 mm
Site 1, 40, demolition layer, Medieval/Post-medieval, OR 86
- 424 Strip narrows slightly.
L: 36 mm; W: 15 mm; Th: 6 mm
Site 2, 595, cemetery level, Early medieval, OR 1399
- 425 Plate.
L: 61 mm; W: 10 mm; Th: 8 mm
Site 2, 595, cemetery level, Early medieval, OR 1405
- 426 Strip, in two pieces, with straight sides.
L: 60 mm; W: 19 mm; Th: 7 mm
Site 2, 342, cemetery level, Early medieval, OR 1228
- 427 Strip, broken at both ends.
L: 33 mm; W: 15 mm
Site 2, 342, cemetery level, Early medieval, OR 1324
- 428 Strip, with two straight sides, and one straight end, the other broken.
L: 42 mm; W: 30 mm
Site 2, 665, cemetery level, Early medieval, OR 1610
- 429 Strip with an irregular shape.
L: 25 mm; W: 20 mm
Site 2, 172, occupation layer, Structure Y, Early medieval, OR 822
- 430 Strip narrows towards one end, one side concave.
L: 47 mm; W: 20 mm
Site 2, 1235, lowest hillwash, Early medieval/Medieval, OR 2373
- 431 Strip with an irregular shape.
L: 34 mm; W: 25 mm
Site 2, 1203, layer, Medieval, OR 2010
- 432 Plate.
L: 35 mm; W: 20 mm
Site 2, 1041, layer, Medieval, OR 2252
- 433 Plate.
L: 20 mm; W: 8 mm
Site 2, 1269, layer, Medieval, OR 2153
- 434 Plate.
L: 25 mm; W: 20 mm; Th: 4 mm
Site 2, 721, floor, Structure C, Medieval, OR 1519
- 435 Strip, curves over slightly, with one straight side, but is otherwise irregular.
L: 47 mm; W: 38 mm; Th: 2 mm
Site 2, 1190, stone spread, Medieval, OR 2048
- 436 Strip, narrows. One end is convex, the other broken.
L: 30 mm; W: 15 mm
Site 2, 32, hillwash, Medieval, OR 115
- 437 Strip, roughly rectangular.
L: 35 mm; W: 15 mm
Site 2, 121, hillwash, Medieval, OR 473
- 438 Three strips.
a) Roughly diamond-shaped.
b) Two straight sides meet at 90°, otherwise it is irregular.

	Wood remains adhere to one face. c) Irregular shape. a) L: 57 mm; W: 33 mm b) L: 50 mm; W: 37 mm c) L: 30 mm; W: 15 mm Site 2, 121, hillwash, Medieval, OR 911		Site 2, 162, Unstratified, OR 619
439	Two strips. a) Rectangular, one end curved over, and broken on one side, with one corner broken off. b) Irregular shape. a) L: 78 mm; W: 56 mm; Th: 4 mm b) L: 40 mm; W: 30 mm Site 2, 121, hillwash, Medieval, OR 1335	450	Two strips. a) Curves slightly, with two straight sides, widening at one end. b) Irregular shape. a) L: 38 mm; W: 14 mm b) L: 37 mm; W: 27 mm Site 2, 162, Unstratified, OR 1013
440	Strip. L: 47 mm; Diam: 7 mm Site 2, 169, hillwash, Medieval, OR 752	451	Strip, broken at both ends. Flattened and curved over at the thinner end, it narrows at the other. L: 53 mm; W: 11 mm Site 2, 162, Unstratified, OR 1635
441	Strip. Site 2, 382, stone spread, Medieval, OR 1198	452	Three strips. a) L: 56 mm; W: 30 mm; Th: 7 mm b) L: 30 mm; W: 25 mm; Th: 4 mm c) Straight sides, broken ends. L: 45 mm; W: 13 mm; Th: 2 mm Site 2, 162, Unstratified, OR 1713
442	Strip, narrowing from the centre towards one end, where it thickens, curves over, and is broken. L: 60 mm; W: 20 mm Site 2, 1016, demolition of croft, Medieval/Post-medieval, OR 1909	453	Six strips. a) It has two sides and one end straight, with a groove running down the centre. b) One straight side, the rest uneven. c) Triangular, but with a concave cut at one corner. d) Roughly triangular. e) Roughly rectangular. f) Narrows. a) L: 57 mm; W: 35 mm b) L: 38 mm; W: 25 mm c) L: 43 mm; W: 21 mm d) L: 30 mm; W: 30 mm e) L: 30 mm; W: 10 mm f) L: 41 mm; W: 12 mm Site 2, 162, Unstratified, OR 2431
443	Strip, in two pieces, with straight sides, and broken ends. L: 61 mm; W: 16 mm; Th: 4 mm Site 2, 36, hillwash, Post-medieval, OR 1811		
444	Two strips. a) Curved. b) Irregular shape. a) L: 27 mm; W: 8 mm b) L: 30 mm; W: 8 mm Site 2, 36, hillwash, Post-medieval, OR 1824		
445	Strip, irregular shape. L: 29 mm; W: 18 mm; Th: 3 mm Site 2, 89, hillwash, Post-medieval, OR 789		
446	Plate. L: 25 mm; W: 20 mm Site 2, 296, fill of drain 306, Post-medieval, OR 638		
447	Strip, one straight side. L: 42 mm; W: 25 mm; Th: 4 mm Site 2, 26, Topsoil, OR 1206		
448	Strip, very corroded, with two straight sides, and one straight end. L: 70 mm; W: 30 mm Site 2, 90, demolition churchyard wall, Modern, OR 1242		
449	Strip, irregular shape. L: 50 mm; W: 25 mm		
<hr/>			
Fragments			
<hr/>			
454	Site 1, 87, wall 17, Early medieval, OR 240		
455	Site 1, 6, layer, Medieval?, OR 228		
456	Site 1, 40, demolition layer, Medieval/Post-medieval, OR 1179		
457	Site 2, 595, cemetery level, Early medieval, OR 1473		
458	Site 2, 279, fill of grave 183, Early medieval, OR 854		
459	Site 2, 837, fill of grave 836, Early medieval, OR 1659		
460	Site 2, 945, fill of grave 944, Early medieval, OR 1775		
461	Site 2, 557, fill of posthole 558, Structure Y, Early medieval, OR 1356		

462	Site 2, 195, fill of posthole 196, Structure Z, Early medieval?, OR 843	474	Site 2, 121, hillwash, Medieval, OR 1357
463	Site 2, 1319, churchyard boundary bank, Eleventh/twelfth century, OR 2303	475	Site 2, 36, hillwash, Post-medieval, OR 1819
464	Site 2, 172, occupation layer, Structure Y, Early medieval, OR 846	476	Site 2, 69, hillwash, Post-medieval, OR 863
465	Site 2, 1298, layer, Medieval, OR 2255	477	Site 2, 26, Topsoil, OR 1812
466	Site 2, 1235, lowest hillwash, Early medieval/Medieval, OR 2045	478	Site 2, 162, Unstratified, OR 1006
467	Site 2, 1235, lowest hillwash, Early medieval/Medieval, OR 2373	479	Site 2, 162, Unstratified, OR 1665
468	Site 2, 774, fill of pit 787, Structure C, Medieval, OR 1554	480	Site 3, 833, fill of earlier excavation trench, Modern, OR 1642
469	Site 2, 689, fill of croft boundary ditch 698, Medieval, OR 1483	<hr/>	
470	Site 2, 1211, fill of posthole 1212, Structure A, Medieval, OR 2163	Small Lumps	
471	Site 2, 702, layer, Medieval, OR 1576	<hr/>	
472	Site 2, 1221, fill of posthole 1222, Structure B, Medieval, OR 2052	481	Site 2, 943, fill of grave 942, Early medieval, OR 1723
473	Site 2, 120, stone spread, Medieval, OR 530	482	Site 2, 967, fill of grave 966, Early medieval, OR 1766
		483	Site 2, 1203, layer, Medieval, OR 2007
		484	Site 2, 1041, layer, Medieval, OR 2252
		485	Site 2, 36, hillwash, Post-medieval, OR 1440
		486	Site 2, 296, fill of drain, Post-medieval, OR 638
		487	Site 2, 162, Unstratified, OR 619

