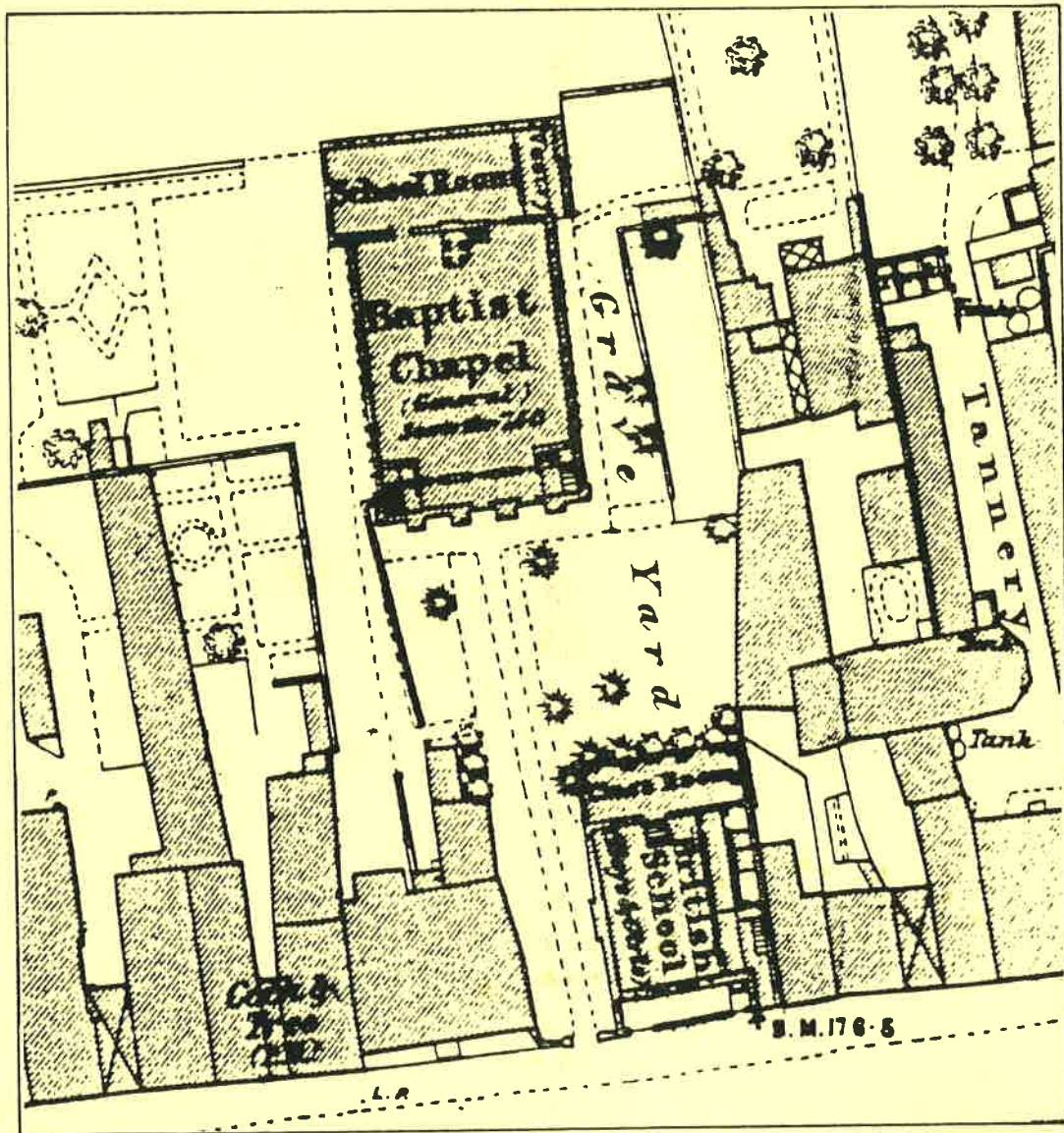


ADKIN LTD & THE ABINGDON BAPTIST CHURCH

## 35 OCK STREET, ABINGDON, OXON.

ARCHAEOLOGICAL RECORDING PRIOR TO REFURBISHMENT



OXFORD ARCHAEOLOGICAL UNIT  
JANUARY 1997

ADKIN LTD & THE ABINGDON BAPTIST CHURCH

**35 OCK STREET, ABINGDON, OXON.**

ARCHAEOLOGICAL RECORDING PRIOR TO REFURBISHMENT

OXFORD ARCHAEOLOGICAL UNIT  
FEBRUARY 1997

ADKIN LTD & THE ABINGDON BAPTIST CHURCH

**35 OCK STREET, ABINGDON, OXON.**  
ARCHAEOLOGICAL RECORDING PRIOR TO REFURBISHMENT

NMR DATA	
SITE NAME	N/A
ADDRESS	35 OCK STREET
TOWN	ABINGDON
CIVIL PARISH	ABINGDON
COUNTY	OXON
NGR	SU 4959 9708
LISTED STATUS	GRADE II
VISIT/SURVEY DATE	OCTOBER 1995- FEBRUARY 1996
OAU SITE CODE	AB35OS.BS 95

OXFORD ARCHAEOLOGICAL UNIT  
FEBRUARY 1997

**35 OCK STREET, ABINGDON, OXON.**  
**ARCHAEOLOGICAL RECORDING PRIOR TO REFURBISHMENT**

---

**LIST OF CONTENTS**

---

*Summary*

1	Introduction . . . . .
2	Background . . . . .
3	Recording Strategy . . . . .
4	Architectural Description . . . . .
5	Archaeological Monitoring . . . . .
6	Conclusion . . . . .
	Appendix A List of sources consulted
	Appendix B Copy of DoE List Entry
	Appendix C Register of Photographs

---

## LIST OF FIGURES

---

- Figure 1: Location Plan (from O.S. 6" (1960))  
 Figure 2: Extract from O.S. 1:500 (1874)  
 Figure 3: Floor Plans (schematic)  
 Figure 4: Sections at A-A', B-B' and C-C'  
 Figure 5: North Elevation  
 Detail of turned stair baluster  
 Figure 6: 35 Ock Street as first constructed (reconstruction)  
 35 Ock Street prior to the recent alterations
- 

## LIST OF PLATES

---

- Plate 1: 35 Ock Street from the south-west  
 Plate 2: North elevation after removal of brick lean-to  
 Plate 3: North elevation - second floor, east end  
 Plate 4: North elevation - second floor, west end  
 Plate 5: North elevation - first floor, east end  
 Plate 6: North elevation - first floor, west end  
 Plate 7: Room GF/2 - partly dismantled passage wall supporting principal joist  
 Plate 8: Room GF/3 - passage wall supporting principal joist  
 Plate 9: Passage GF/5 - common joists resting on the passage walls  
 Plate 10: Room GF/2 - cupboard showing back of passage wall on right  
 Plate 11: Detail of staircase  
 Plate 12: Room 1F/2 - showing west wall abutting chimney stack of adjacent property  
 Plate 13: Room 1F/1 - continuation of west wall with principal joist detail  
 Plate 14: Room 1F/3 - east wall (after removal of principal joists and insertion of steels  
 Plate 15: Rooms 1F/2/3/5/6 - showing relationship of principal joists to passage walls  
 (after partial removal of passage walls)  
 Plate 16: South wall of staircase showing relationship of stud walls to chimney stack  
 Plate 17: Room 1F/3 cupboard - south face of wall shown in plate 16  
 Plate 18: Room 1F/2 west wall - detail of chimney of adjacent property  
 Plate 19: Room 2F/5 - south end of former passage looking south  
 Plate 20: Room 2F/3 west wall - former gable and chimney stack of adjacent property  
 Plate 21: Room 2F/3 east wall - former gable-end truss showing site of clasped purlins  
 Plate 22: Room 2F/3 - west wall (now removed) showing incorporated common rafter  
 Plate 23: Room 2F/2 - east wall from east showing incorporated common rafters  
 Plate 24: Northern roofs, east, central and west ridges, from the north-east  
 Plate 25: Southern roof showing change of pitch at former ridge  
 Plate 26: Northern roofs, east ridge - rafters pegged to round purlin  
 Plate 27: Junction of west ridge and south roof

**35 OCK STREET, ABINGDON, OXON.**  
ARCHAEOLOGICAL RECORDING PRIOR TO REFURBISHMENT

---

*Summary*

*Investigation, recording and a watching brief were carried out at 35 Ock Street during the course of building operations in 1995-6. The form of the original building was determined as a two-storey timber frame on a stone base, perhaps built around 1700; the plan form being a double-pile house with two chimney stacks, and a central passage. Subsequently the rear half of the M-profile roof was replaced with gables, and in the last phase, perhaps around 1800, the front attic was converted into a full top floor and the brick front was added to the house. Evidence was also found for a cellar and a well as well, while on the adjacent site four brick-lined graves were uncovered probably of 18th century date.*

---

**1 INTRODUCTION**

- 1.1 The Oxford Archaeological Unit (OAU) was commissioned by Adkin Ltd of Abingdon on behalf of the Abingdon Baptist Church to undertake an archaeological watching brief during refurbishment work at 35 Ock Street, Abingdon (NGR: SU 4945 9706). The watching brief was required as a condition of Listed Building Consent under the terms of PPGs 15/16, and was carried out in accordance with a brief set by the Oxfordshire Deputy County Archaeologist (Historic Buildings).
- 1.3 The initial survey work on the timber-framed rear wall was carried out over a period of three days 15th -18th November 1995. The site was subsequently visited on three occasions to enable a photographic record to be made of features exposed internally during enabling works. Additional recording work was required when it was realised that much of the original interior carpentry was also being removed, and then a further stage of work commenced in February 1996 when it was decided to remove and replace the roof. The work undertaken thus considerably exceeds that envisaged by the original brief.

**2 BACKGROUND**

- 2.1 The site is located on the north side of Ock Street and occupies part of the frontage to the Baptist Chapel. The building was thought to date from 1652 or shortly after, this being the date that the land was first acquired by the Baptists and the first chapel erected.
- 2.2 The building has a late 18th or early 19th-century three storey, brick built frontage to the street, while to the rear it is of three gabled form, rough rendered onto a timber frame. It is Grade II listed, and the list description is given below (Appendix B).



### 3 RECORDING STRATEGY

- 3.1 Subsequent to the stripping of external render and internal lath and plaster work by contractors (Kingerlee Ltd of Oxford), the exterior elevation of the rear wall was graphically recorded at a scale of 1:20 on polyester drafting film. Additional detail visible only from the inside of the building was recorded as an overlay to the exterior elevation.
- 3.2 A photographic record was made of the rear elevation and of features exposed internally as enabling work progressed.
- 3.3 During the course of work it became apparent that considerably more stripping was to be undertaken than was initially envisaged. Accordingly a further watching brief was maintained during the removal of principal floor joists and the stripping of the internal partition walls. The record of this work was predominantly by photography, though the opportunity was taken to generate measured section drawings through the roof spaces.
- 3.4 Watching-briefs were carried out during groundworks.

### 4 ARCHITECTURAL DESCRIPTION

#### 4.1 Summary of Development

- 4.1.1 A detailed description of the observed features is given in the following section (§4.2), the salient points of which are here summarised.
- 4.1.2 *Phase I:* As constructed (fig. 6) the house was double fronted, with a central passage and two chimney stacks, and a stair in the rear part. Of two storeys with attics, it was of rubble walling on the ground floor, and was timber framed on the first floor. There was a double gable roof, of which some of the trusses of the front half survive, while the rear wallplate suggests that there may have been dormer windows.

*Phase II:* The rear half of the roof was reconstructed with three gables (or perhaps two gables later made into three); the present staircase appears to have been rebuilt and may also be secondary in its present position.

*Phase III:* In the third phase (fig. 6) the front roof was reconstructed, converting the front attic to a full second floor by extending up the front wall (now rebuilt in brick) and replacing the existing roof with a low-pitched gable.

#### 4.1.3 Dating

The date of the initial phase is perhaps not so early as the historical date of 1652, given the character of the staircase, and the nature of the framing, and according a date nearer 1700 is suggested. The second phase of work may not be long after this, in the 18th century. The final phase of brick refronting, as the List entry suggests, is probably late 18th or early 19th century.

## 4.2 Description:

*The report is illustrated by floor plans (fig. 3), sectional elevations (fig. 4), rear elevation (fig. 5) and reconstructions (fig. 6), together with a selection of photographs (plates 1-27).*

### 4.2.1 Ground floor

The house was built against an existing building on the west, whose stone chimney stack is respected by the west wall of No. 35. The walls are of rubble, with brick surrounds to the windows and door in the front wall, and some rebuilding in brick and concrete block in the N wall. The chimney stacks are also of rubble, with brick arches and jambs (GF2). The plan is of two rooms one either side of a central passage entered from the front door. The room on the E (GF3) is panelled, with an alcove and cupboard on each side of the fireplace, and stud framing flush with the rear of the stack (pl. 10). The stair is at the rear on the E side (GF4), and if primary may have been moved, since it cuts across the window in the east wall in a manner that does not look intentional; however, the lack of a fireplace in the rear of the chimney would equally suggest that it was intended to be here. The solid balusters are probably of early 18th-century date (pl. 11, fig. 5 detail). The NW room (GF1) has a fireplace (blocked) and had a brick bay window of 19th-century date; an earlier door to the passage (S of the present one) had been blocked (see fig. 3).

The structural carpentry had the appearance of being original work: the framed partitions run from front to rear with short E/W ceiling joists between them and over the passage (pl. 9); the partitions have regular spaced studding and long straight braces (pls 7-8). In the front there were two principal (first) floor joists running E/W (now removed), with joists coming forward to the front wall and going back to beams let into the side of the chimney stacks (or the trimmers in front of the first-floor hearths). At the rear the arrangement was varied, with the W room (GF1) having an E/W principal of narrower span, and the E room (GF4) having a longer principal that also spanned the passage and beyond (see plan fig. 3); the short E/W ceiling joists over the passage continue as far N as these principals, and are of wider span behind the stacks than they are in front. The ceiling joists thus made a wider passage at the rear of the house, and the fact that the E principal was both reused and had joists resting on it rather than tenoned into it again suggests a rebuild to accommodate the stair. It is possible that the primary stair was at the rear end of the passage in its wider part. A further observation relevant to this was the fact that the NW end of the passage wall was additional (post-dating the plaster ceiling) and that the shape of room GF1 seems to have been different and smaller.

### 4.2.2 First floor

The first-floor plan is the same as below, with a central passage and two rooms at the front (the S end of the passage was blocked off to form a closet, later reached from room 1F2). The walls are timber framed, the east and west walls continuously framed from front to rear, all with plain studs and long diagonal braces (pls 12-14). The front wall has been replaced in brick but has a plate to carry the ceiling joists, and the SW corner again uses the exposed walling of next door's chimney stack (pl. 18); the rear wall is partly rebuilt in concrete block in the NE corner. The fireplace (1F2) has a brick hearth carried on the trimmer beam, and a brick surround, though



CUJ

this is blocked and obscured. The floors in front and rear west rooms have short chiselled numbers on the floor joists. The partitions (as below) appear to be original, and have short E/W ceiling joists lapped over them; there are also framed cupboards on either side of the chimney stacks (pls 16-19). The ceilings in each of the front rooms were carried on large E/W principal joists, the common joists using diminished haunch joints. The ceilings in the rear half are similar to those below, again forming a broader area of passage behind the stacks, and with the principal joist in the E half of the building having the appearance of being added (it rests on a block in the E wall rather than being properly framed into it). The rear wall has bracing similar to that of the side walls (see fig. 5 and pls 2-6).

#### 4.2.3 *The Attic and Roof*

The roof over the *front part* of the building was originally a gable running parallel with the road, with two or three principal trusses, having collars clasping purlins and with the principal rafters diminished above the collars (fig. 4A-A, pls 20-23). On this framework of principal rafters and purlins the common rafters were placed. An internal ridge of round section may be original, and survives in position on the common rafter pair on the W partition. The E principal truss survives, and the purlins are present, but ex-situ, being reused in the later roof (one of them being a single-section piece, the other running only as far W as the partition).

The *rear roof* may initially have had a similar single roof, and the top plate of the rear wall (i.e. at attic floor level) has pegged mortices for uprights (fig. 5) that may have carried dormer windows. It is clear that the rear attic floor has always rested on the rear plate rather than being tenoned into it, and given the similarity to the floor of the front part is presumably original. This does not alone decide the sequence of roof structures, but the present gables are placed on the floorboards in a manner that suggests they are secondary, and that an earlier roof was replaced with a gabled roof at right-angles to the front part. It was thought at first that the middle gable might be additional, but there is no significant difference between that and the other two, and so it is probably part of the same build. The rear gables rise from the front ridge line, and the central one being higher has a hipped gablet (pl. 24). They are all of fairly light construction, using poles and some reused timbers, and with one possible mast timber in the E gable (pl. 26). The rafters of the outer sides descend to the wall plate, and the inner ones to two valley plates that run back to posts beside stack (and provide for internal headroom).

The *rebuilding of the front roof* was subsequent to the construction of rear gables. At the front of the building the attic was raised to form a full second floor with fireplaces (at least in the W room), the brick front wall apparently being contemporary with the brick facing of the entire facade. The standard of construction was not very high, with brick infilling being placed above the primary truss in the E wall, and a light roof of rafter couples with a plank ridge and intermittent joists/ties which carried the ceilings (pls 21 & 25).

The *street front* is of consistent brickwork for its full height, and no break is visible above the first floor. There are rubbed brick voussoirs to door and windows (the door has a three-centred arch, the windows are flat headed). The front is three-bayed, with the side windows having 4 x 4 sashes and the centre 3 x 3 sashes, and the attic windows being smaller than those below.

#### 4.2.4 *The recent works*

The clearance of the building prior to the current works had removed such modern fittings as had survived, and so no clear view was obtained of later 19th and 20th-century changes, but these do not appear to have been substantial. No fireplace fittings remained, and only the panelled room on the ground floor gives an indication of the quality of the internal appearance of the original build.

The current works initially comprised the rebuilding of the rear elevation, but in due course came to involve the removal of original partitions, the replacement of the substantial (and very solid) front principal joists with steel and the removal and replacement of the secondary roof at the front.

### 5 ARCHAEOLOGICAL MONITORING

- 5.1 Ground levelling in the area to the north-east of 35 Ock Street (within the area of the former Baptist Chapel graveyard (see 1874 OS map: fig. 2) for use as hardstanding during the course of construction work, although outside the original remit of the watching brief, was monitored archaeologically.
- 5.2 The top level of a total of four brick lined graves, probably of 18th-century date, were exposed at the limit of excavation, principally towards the eastern limit of the development area. A substantial quantity of unarticulated human bone, presumably representing previously disturbed charnel material, was carefully collected for reburial within the limits of the former graveyard.
- 5.3 During the same programme of ground levelling work, a stone lined well was exposed within the area of the former British School (see 1874 OS map: fig. 2), approximately 7 metres east of the extant east wall of 35 Ock Street. The well survived to a maximum depth of c.2.8m.
- 5.4 A former cellar beneath the rear eastern section of 35 Ock Street (Room GF/4 and stairwell) was excavated by contractors with no provision for archaeological monitoring, though limited access was allowed for the purposes of rapid recording. Two exposed walls, corresponding to the eastern and western walls of room GF/4, were of stone construction with limewash render, while the brick constructed floor was located at a level of 1.07m below existing ground floor level. In plan, the cellar extended as far south as the southern limit of the stack within room GF/3. To the north the cellar was subdivided by two N/S stone built walls. Brick blocking between these walls did not allow for the northern limit of the cellar to be ascertained.

### 7. CONCLUSION

- 7.1 The opportunity to investigate 35 Ock Street has revealed the earlier history of the structure that was not altogether apparent from the exterior. It is salutary to note that a survey conducted earlier in the proceedings could better have informed the decisions that were taken about the restoration. Questions have been raised about the date of the building, which can perhaps only be answered by dendrochronology of surviving

timbers, while the precise sequence of alterations could not fully be determined. The discovery of possible mast timber is of interest in the light of previous discoveries of reused barge materials in Abingdon houses. Above all, the survey has again shown that the built heritage of Abingdon is often obscured by the subsequent refronting of historic buildings, and that there may be more surviving medieval and post-medieval timber framing than has yet been appreciated.

Oxford Archaeological Unit,  
February 1997

R@R C:WS\RIC\BLDGS\AB35OS.RE3

## Appendix A

### List of Sources

---

#### CARTOGRAPHIC SOURCES

- Ordnance Survey 1st Edition 1:500 map of 1874
- Ordnance Survey 2nd Edition 1:2500 map of 1899
- Ordnance Survey 2nd Revision 1:2500 map of 1936
- Ordnance Survey 1:10,560 (sheet SU49NE): revision of 1960
- Ordnance Survey 1:2500 (sheet SU4997): revision of 1967
- Ordnance Survey 1:2500 (sheet SU4997): revision of 1973
- Ordnance Survey 1:1250 (sheet SU4997SW): revision of 1980

## Appendix B

### Copy of DoE List Entry

---

1.  
752

OCK STREET  
(North Side)

SU 4997 1/20

No. 35

GV

II

2.

late C18 or early C19 front elevation probably on 1652 core. Three gables to rear, rough rendered on timber frame. East gable is tile hung. Stone ground floor. Front elevation - three storeys. Brick dentil eaves cornice. Tile roof. Three windows, gauged brick flat arches, double hung sashes with glazing bars. Middle window blocked. Rough arched doorway, 'Gothic' glazing fanlight, four panel door. Two steps, railings to side.

Nos. 35 to 41 (odd) form a group.

**Appendix C**  
Photographic Register, 35 Ock Street, Abingdon

**Film 1 [Colour slide]**

- 1 Void
- 2 Void
- 3 W ridge (internal)
- 4 W ridge (purlin detail)
- 5 central ridge
- 6 E ridge
- 7 N elevation, E gable
- 8 ditto
- 9 N elevation, central gable
- 10 N elevation, W gable
- 11 N elevation, W end (former wall-plate)
- 12 N elevation, W end (former wall-plate detail)
- 13 N elevation, E end (former wall-plate)
- 14 N elevation, E end (former wall-plate detail)
- 15 N elevation, E end (former wall-plate detail)
- 16 N elevation, E end (1F studding)
- 17 N elevation, W end (1F studding)
- 18 N elevation, W gable (detail)
- 19 N elevation, E end (former wall-plate detail)
- 20 ditto
- 21 N elevation, 1F E end
- 22 N elevation, 1F W end
- 23 N elevation, 1F, studding detail
- 24 N elevation, 1F, studding detail
- 25 room 2F/3, former gable end truss detail
- 26 Room 2F/3
- 27 Room GF/5, stairs
- 28 Room GF/5, stairs detail
- 29 Room 1F/2, W wall detail
- 30 Room 1F/3-2F/3, window
- 31 Room 1F/5, stairs to 2F/5
- 32 N elevation
- 33 N elevation
- 34 35 Ock street from the S-E
- 35 ditto
- 36 ditto
- 37 Stone footings beneath pavement at S-E corner

38 N elevation from N-E

**Film No: 1 [Black and white]**

- 1 Room GF/5, stairs
- 2 Room 1F/5-2F/5, window
- 3 Void
- 4 Room 1F/5, stairs to 2F/5
- 5 Room 1F/2, W wall detail
- 6 ditto
- 7 Room 2F/3, E wall
- 8 Room 2F/3, former gable end truss detail
- 9 W ridge (internal)
- 10 W ridge (purlin detail)
- 11 Central ridge
- 12 E ridge
- 13 N elevation, E gable
- 14 N elevation, central gable
- 15 N elevation, W gable
- 16 N elevation, E end (former wall-plate level)
- 17 N elevation, centre (former wall-plate level)
- 18 N elevation, W end (former wall-plate level)
- 19 N elevation, E end (former wall-plate detail)
- 20 N elevation, W gable (former wall-plate detail)
- 21 N elevation (former wall-plate detail)
- 22 N elevation (former wall-plate detail)
- 23 N elevation (former wall-plate detail)
- 24 N elevation (former wall-plate detail)
- 25 N elevation (former wall-plate detail)
- 26 N elevation, 1F E end
- 27 ditto
- 28 N elevation, 1F W end
- 29 N elevation, 1F, studding detail
- 30 N elevation, 1F, W end
- 31 N elevation, 1F, studding detail



32 N elevation, 1F, E end  
33 on void

**Film No: 2** [Colour slide]

1 N elevation  
2 ditto  
3 ditto  
4 ditto  
5 N elevation, studding detail  
6 ditto  
7 ditto  
8 N elevation, former 1F window  
9 35 Ock Street from S-E  
10 Well beneath British School  
11 ditto  
12 Grave beneath British School  
13 ditto  
14 ditto  
15 ditto  
16 ditto  
17 GF/4, S wall  
18 GF/4, former N door  
19 GF/2, E wall  
20 GF/2, E wall  
21 GF/2, W wall  
22 GF/2, W wall (detail)  
23 1F/2, N-E cupboard  
24 1F/1, S-W cupboard  
25 1F/3, S-W cupboard  
26 Well beneath British School  
27 ditto  
28 on Void

**Film No: 2** [Black and white]

1 Void  
2 Intro  
3 N elevation  
4 ditto  
5 ditto  
6 N elevation, studding detail  
7 ditto  
8 N elevation E end, former wall-plate level  
9 N elevation, former 1F window  
10 35 Ock Street from S-E  
11 Well beneath British School  
12 ditto

13 Grave beneath British School  
14 ditto  
15 ditto  
16 GF/4, S wall  
17 GF/4, former N door  
18 GF/2, E wall  
19 GF/2, E wall  
20 GF/2, W wall  
21 GF/2, W wall (detail)  
22 1F/2, N-E cupboard  
23 1F/1, S-W cupboard  
24 1F/3, S-W cupboard  
25 Site of former British School  
26 Well beneath British School  
27 N elevation  
28 ditto  
29 ditto  
30 E elevation from the S-E  
31 ditto  
32 ditto  
33 ditto  
34 ditto  
35 Baptist chapel from S  
36 35 Ock St, N elevation

**Film No: 3** [Colour slide]

1 GF/2  
2 ditto  
3 GF/3, excavation of floor  
4 GF3-GF4, basement  
5 ditto  
6 ditto  
7 ditto  
8 ditto  
9 ditto  
10 GF/2  
11 GF/4  
12 1F/5  
13 1F/4  
14 1F/3  
15 1F/2  
16 2F/3  
17 2F/5-2F/1  
18 2F/5-2F/3  
19 1F/5-1F/4  
20 GF/5-GF/4, basement  
21 N elevation  
22 ditto  
23 N elevation, ground floor W end

24 N elevation, ground floor E end  
 25 N elevation  
 26 N elevation, N-E corner  
 27 -  
 28 GF/1  
 29 E elevation, stair window  
 30 on Void

**Film No: 4 [Colour slide]**

1 GF/2  
 2 ditto  
 3 ditto  
 4 ditto  
 5 GF/1-GF/2-GF/5  
 6 GF/2  
 7 GF/3  
 8 ditto  
 9 ditto  
 10 ditto  
 11 ditto  
 12 GF/1  
 13 GF/5  
 14 ditto  
 15 GF/4  
 16 1F/2  
 17 ditto  
 18 ditto  
 19 ditto  
 20 1F/2-1F/5  
 21 1F/3  
 22 ditto  
 23 ditto  
 24 ditto  
 25 ditto  
 26 ditto  
 27 1F/1  
 28 ditto  
 29 ditto  
 30 1F/4  
 31 1F/5  
 32 on Void

**Film No: 5 [Black and white]**

1 2F/3  
 2 ditto  
 3 ditto  
 4 ditto

5 2F/5  
 6 ditto  
 7 2F/2  
 8 ditto  
 9 ditto  
 10 ditto  
 11 2F/1  
 12 ditto  
 13 ditto  
 14 2F/5  
 15 2F/4  
 16 2F/5-2F/4  
 17 2F/5  
 18 2F/5-1F/5  
 19 2F/5-2F/4 (paint detail)  
 20 1F/3  
 21 ditto  
 22 ditto  
 23 ditto  
 24 ditto  
 25 ditto  
 26 1F/2  
 27 ditto  
 28 1F/2-1F/5-1F/3  
 29 1F/2  
 30 1F/5  
 31 ditto  
 32 1F/1  
 33 ditto  
 34 ditto  
 35 ditto  
 36 1F/4

**Film No: 5 [Colour slide]**

1 2F/3  
 2 ditto  
 3 ditto  
 4 ditto  
 5 2F/5  
 6 ditto  
 7 2F/2  
 8 ditto  
 9 ditto  
 10 ditto  
 11 2F/1  
 12 ditto  
 13 ditto  
 14 2F/5  
 15 2F/4

16 2F/5-2F/4  
 17 2F/5  
 18 2F/5-1F/5  
 19 2F/5-2F/4 (paint detail)  
 20 1F/3  
 21 ditto  
 22 ditto  
 23 ditto  
 24 ditto  
 25 ditto  
 26 1F/2  
 27 ditto  
 28 1F/2-1F/5-1F/3  
 29 1F/2  
 30 1F/5  
 31 ditto  
 32 1F/1  
 33 ditto  
 34 ditto  
 35 ditto  
 36 1F/4

**Film No: 6** [Colour slide]

1 1F/4  
 2 ditto  
 3 1F/5-GF/5  
 4 GF/4-GF/5  
 5 GF/5  
 6 GF/1  
 7 ditto  
 8 GF/1-GF/5  
 9 ditto  
 10 ditto, wallpaper detail  
 11 GF/2  
 12 ditto  
 13 ditto  
 14 ditto  
 15 ditto  
 16 GF/3  
 17 ditto  
 18 ditto  
 19 ditto  
 20 on Void

**Film No: 7** [Black and white]

1 1F/4  
 2 ditto

3 1F/5-GF/5  
 4 GF/4-GF/5  
 5 GF/5  
 6 GF/1  
 7 ditto  
 8 GF/1-GF/5  
 9 ditto  
 10 ditto, wallpaper detail  
 11 GF/2  
 12 ditto  
 13 ditto  
 14 ditto  
 15 ditto  
 16 GF/3  
 17 ditto  
 18 ditto  
 19 ditto  
 20 on Void

**Film No: 7** [Colour slide]

1 S roof from S E  
 2 S roof from S W  
 3 intersection of S roof and E ridge  
 4 ditto  
 5 E ridge  
 6 ditto  
 7 E, central and W ridges  
 8 ditto  
 9 Intersection of S roof and E ridge  
 10 Intersection of S roof and central  
 Ridge  
 11 ditto  
 12 ditto  
 13 Void  
 14 Void  
 15 Intersection of S roof and W ridge  
 16 Void  
 17 Void  
 18 Principal joists from GF/3 and  
 1F/3 removed  
 19 S roof from S E  
 20 S roof from S W  
 21 Intersection of S roof and E and  
 central ridges  
 22 Intersection of S roof and W and  
 central ridges  
 23 Intersection of S roof and W ridge  
 24 ditto  
 25 Poor photo showing site of

removed joist  
 26 ditto  
 27 ditto

**Film No: 9 [Black and white]**

1 S roof from S E  
 2 S roof from S W  
 3 Intersection of S roof and E ridge  
 4 ditto  
 5 E ridge  
 6 ditto  
 7 E, central and W ridges  
 8 ditto  
 9 Intersection of S roof and E ridge  
 10 Intersection of S roof and central ridge  
 11 ditto  
 12 ditto  
 13 Void  
 14 Void  
 15 Intersection of S roof and W ridge  
 16 Void  
 17 Void  
 18 Principal joists from GF/3 and 1F/3 removed  
 19 S roof from S E  
 20 S roof from S W  
 21 Intersection of S roof and E and central ridges  
 22 Intersection of S roof and W and central ridges  
 23 Intersection of S roof and W ridge  
 24 ditto  
 25 Poor photo showing site of removed joist  
 26 ditto  
 27 ditto

**Film No: 10 [Colour slide]**

1 Void  
 2 2F/3  
 3 2F/3-2F/5-2F/2  
 4 2F/3-2F/5  
 5 2F/5-2F/4  
 6 2F/5-1F/5  
 7 1F/4  
 8 1F/5-GF/5

9 2F/5-1F/5-GF/5, S wall of stairs  
 10 1F/3  
 11 1F/2  
 12 ditto  
 13 Void  
 14 1F/1  
 15 GF/2, fireplace in N wall  
 16 ditto  
 17 on Void

**Film No: 11 [Black and white]**

1 2F/2  
 2 2F/3  
 3 2F/3-2F/5-2F/2  
 4 2F/3-2F/5  
 5 2F/3-2F/5-2F/2  
 6 ditto  
 7 2F/3  
 8 2F/2  
 9 2F/3-2F/5  
 10 2F/5-2F/4  
 11 2F/5-1F/5  
 12 1F/4  
 13 1F/5-GF/5  
 14 2F/5-1F/5-GF/5, S wall of stairs  
 15 1F/3  
 16 1F/2  
 17 ditto  
 18 Void  
 19 1F/1  
 20 GF/2, fireplace in N wall  
 21 ditto  
 22 on Void



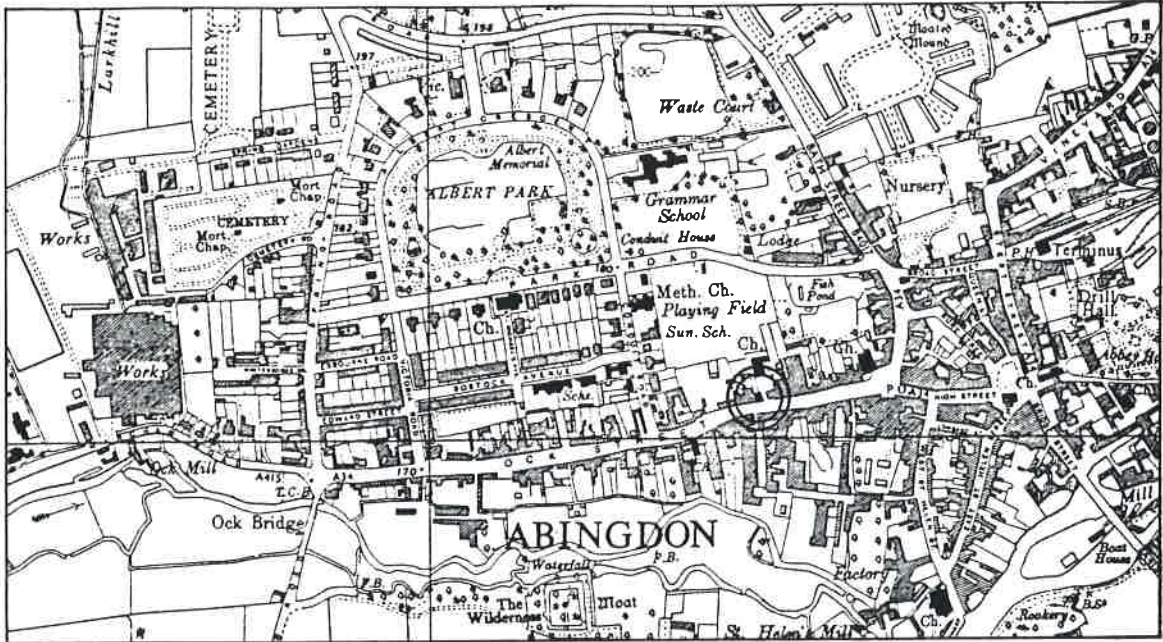


Figure 1:  
Location Plan (from O.S. 6" (1960))

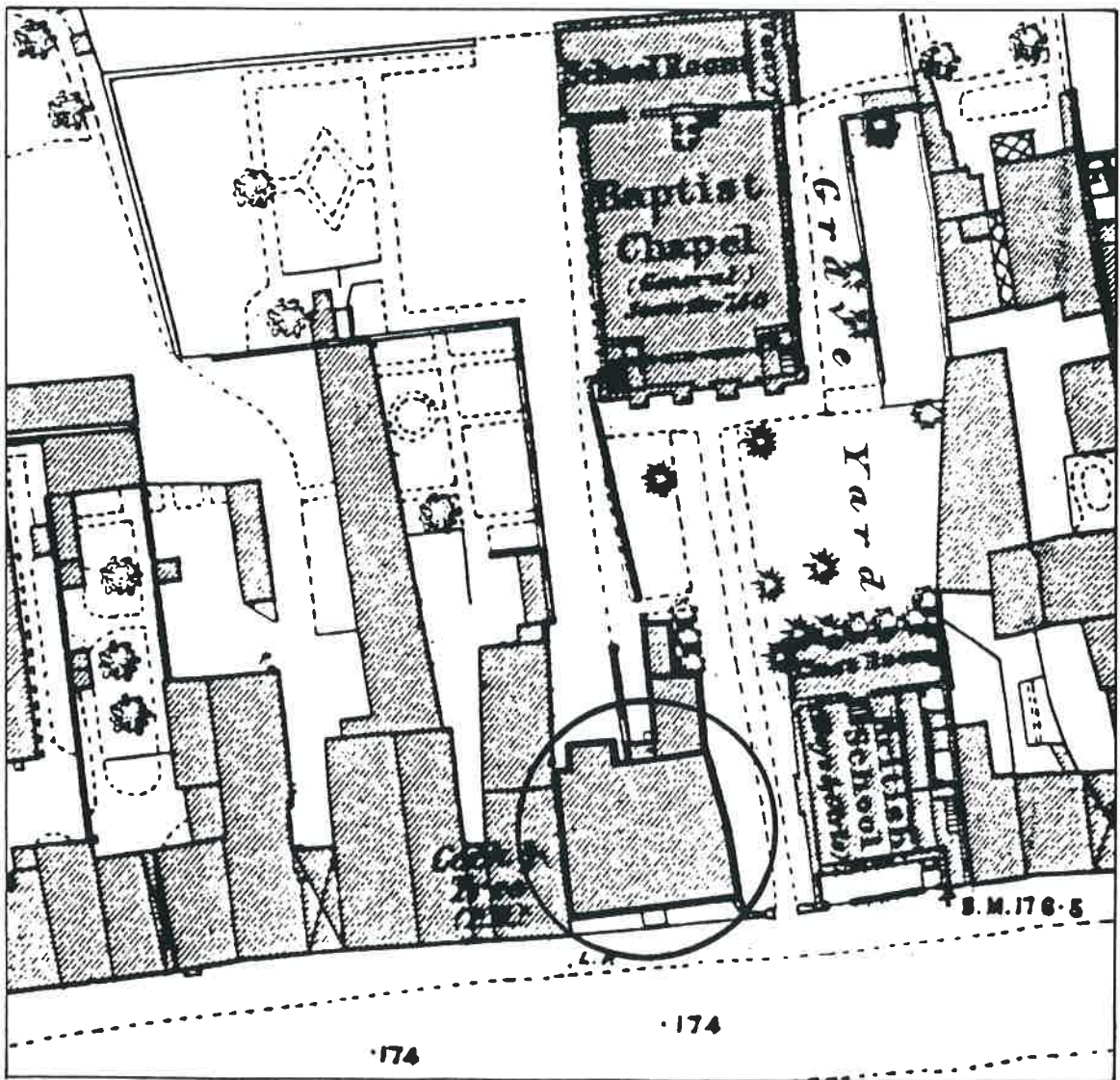


Figure 2:  
35 Ock Street, Abingdon  
Extract from O.S. 1:500 (1874)



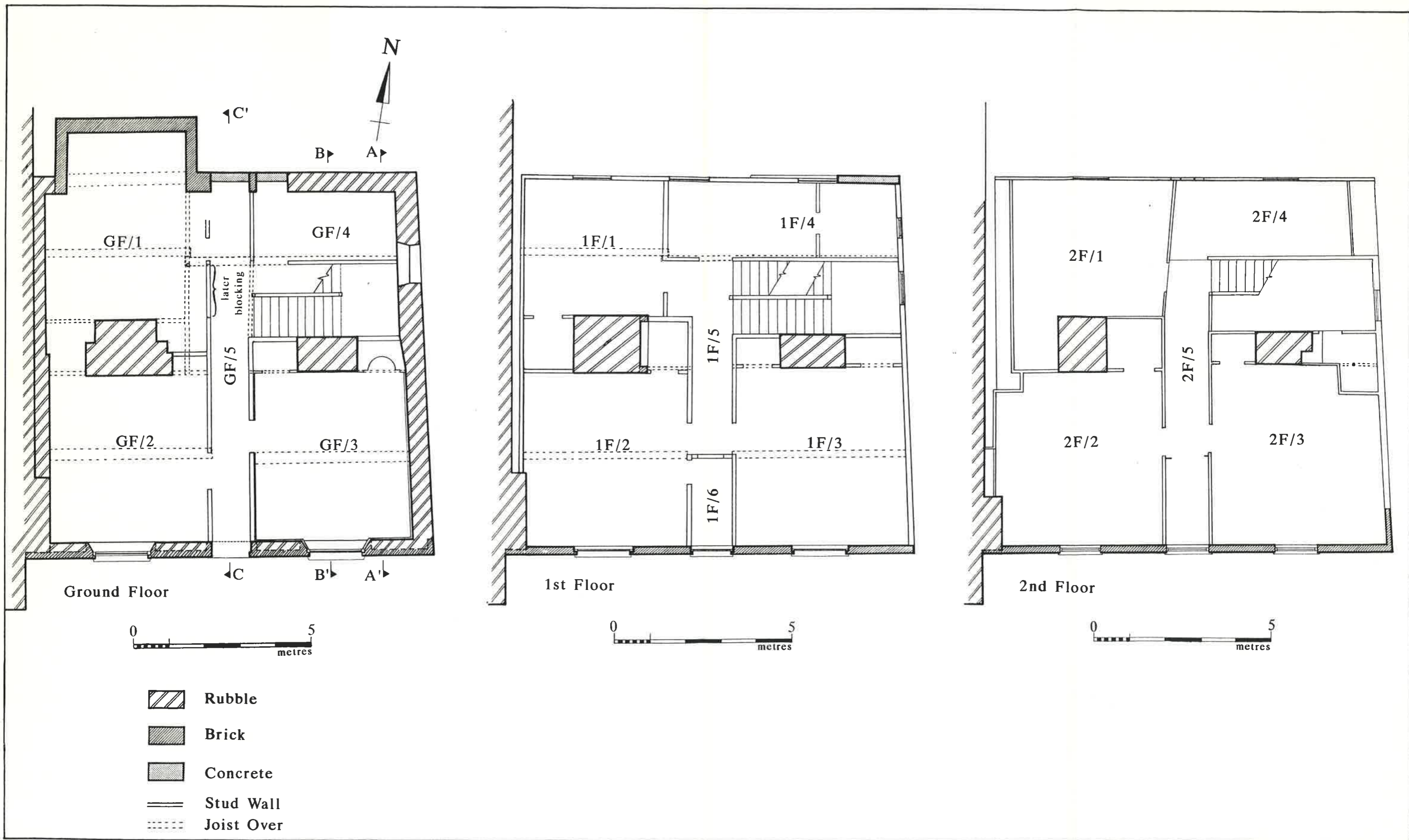


Figure 3:  
35 Ock Street, Abingdon  
Floor Plans (schematic)

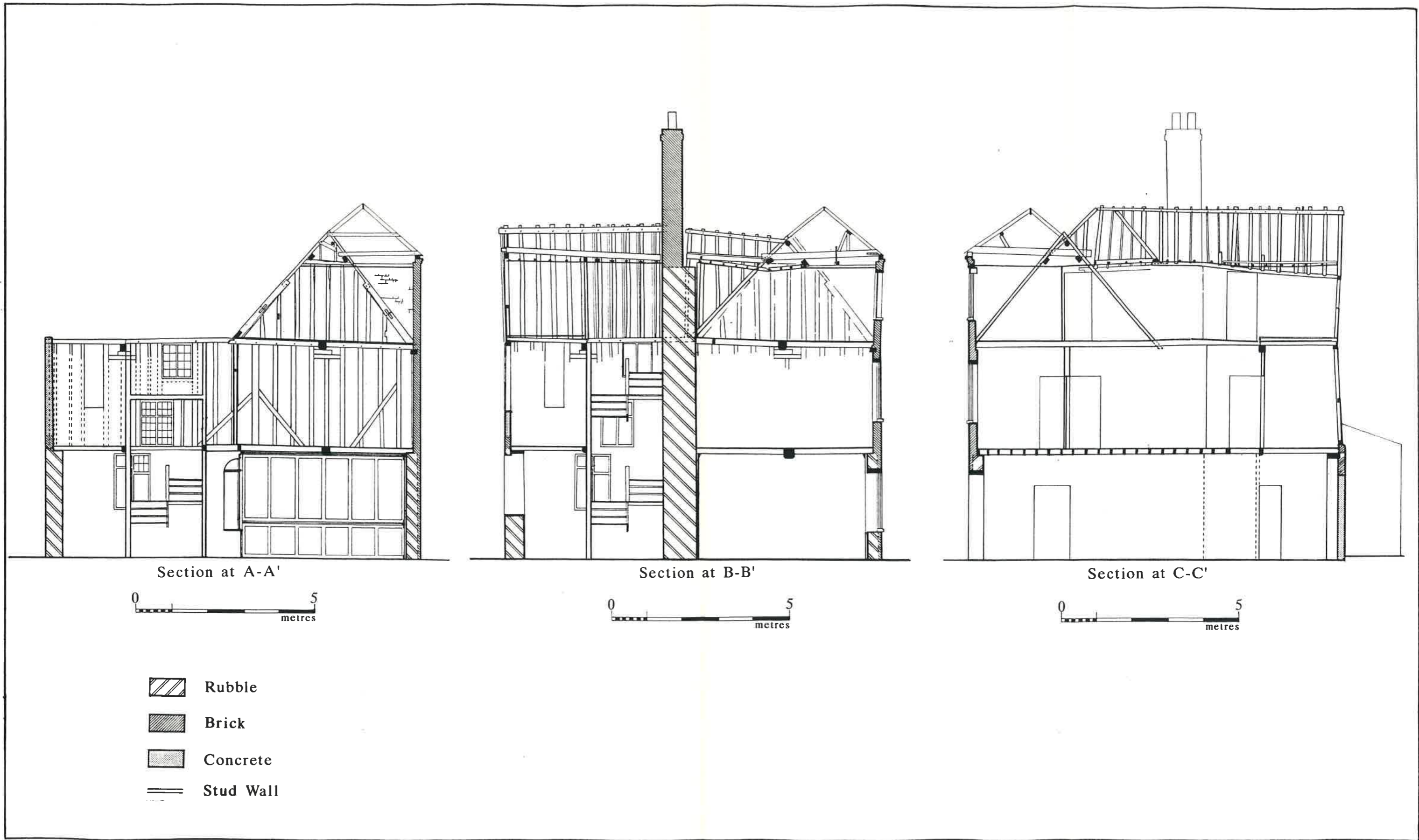


Figure 4:  
 35 Ock Street, Abingdon  
 Sections at A-A', B-B' and C-C'



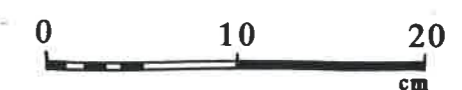
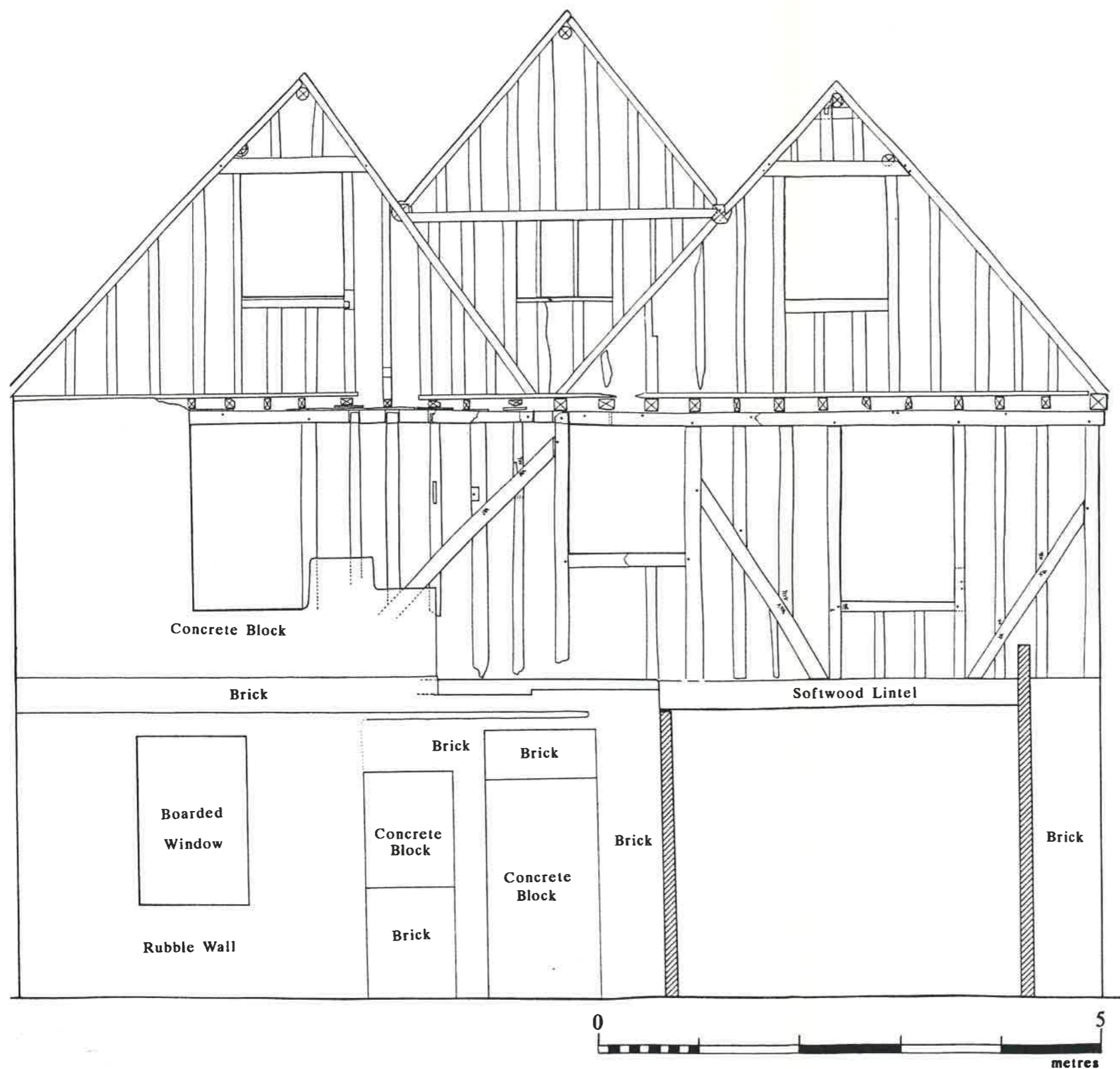


Figure 5:  
 35 Ock Street, Abingdon  
 North Elevation  
 Detail of turned stair baluster

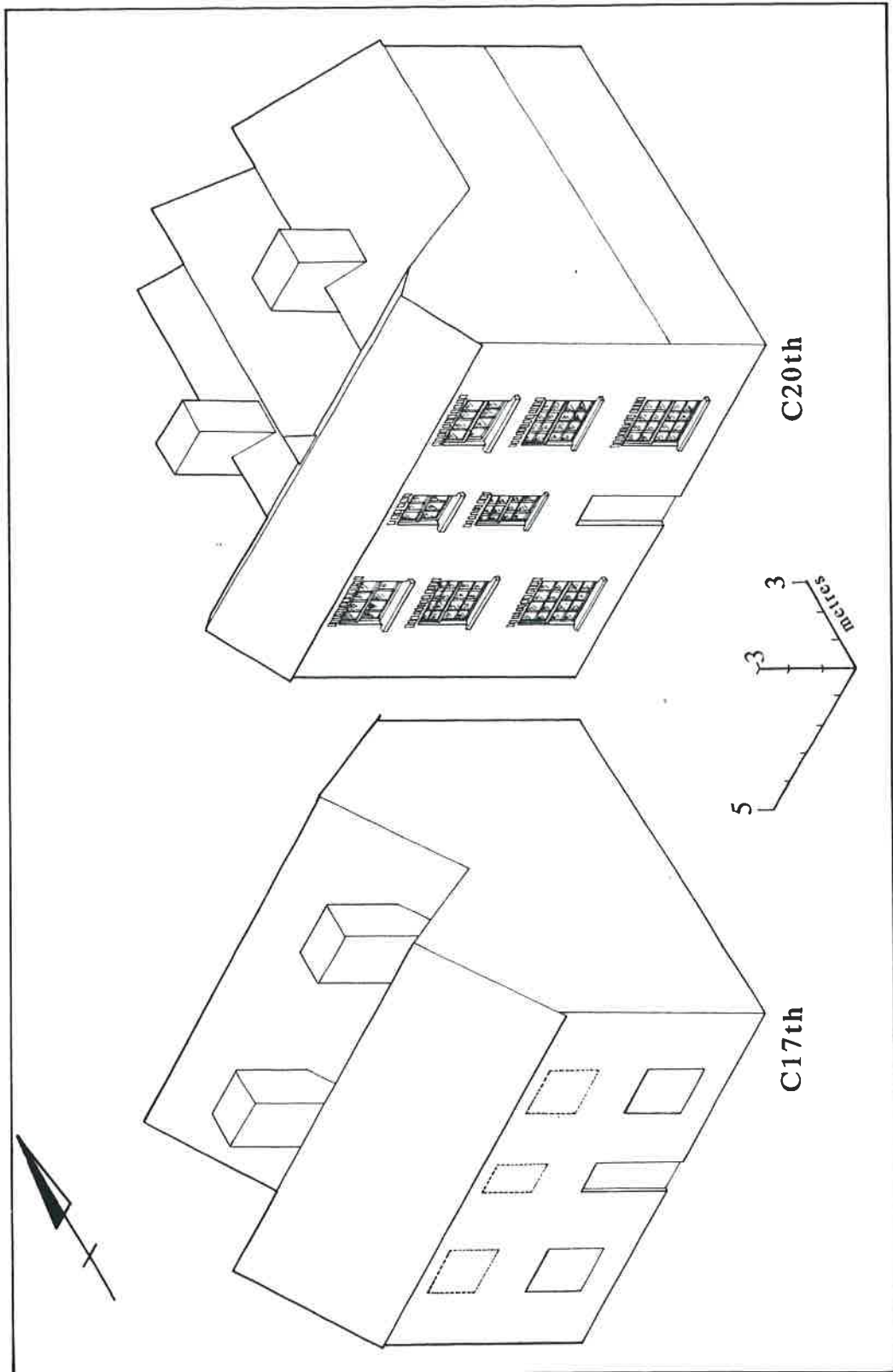


Figure 6:  
35 Ock Street as first constructed (reconstruction)  
35 Ock Street prior to the recent alterations



Plate 1: 35 Ock Street from the south-west



Plate 2: North elevation after removal of brick lean-to





Plate 3:  
North elevation - second floor, east end

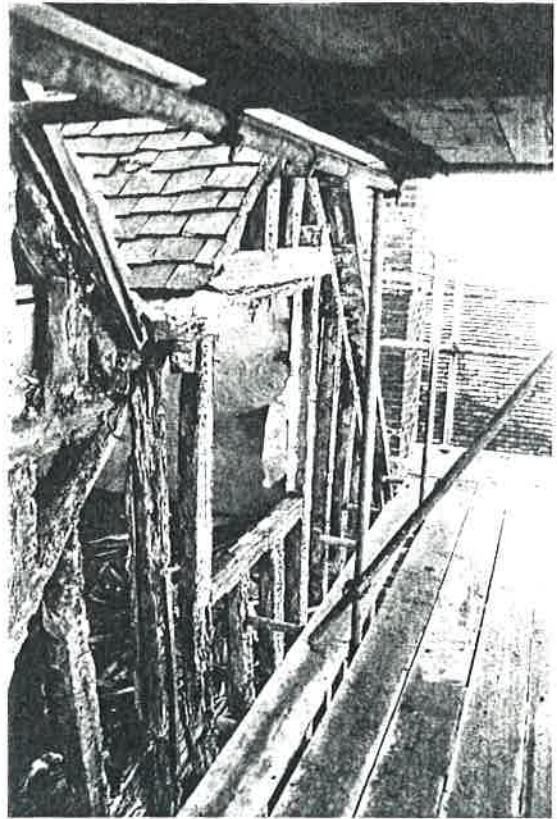


Plate 4:  
North elevation - second floor, west end

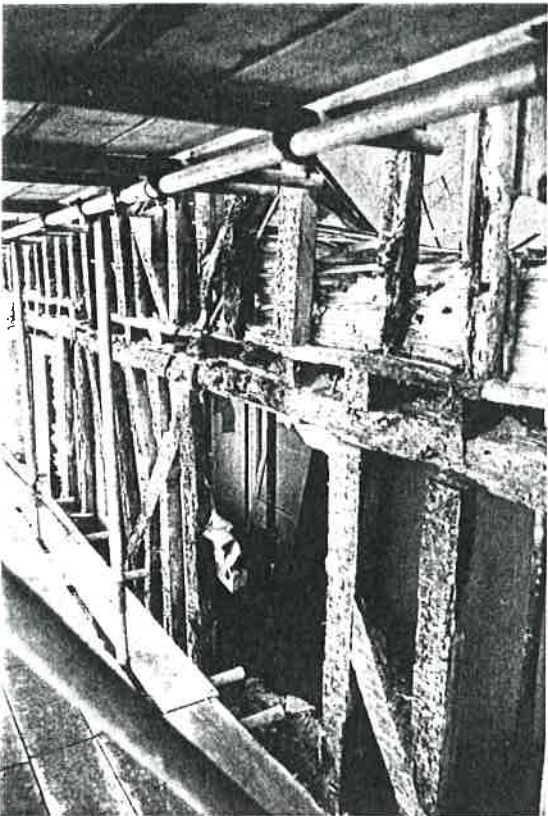


Plate 5:  
North elevation - first floor, east end

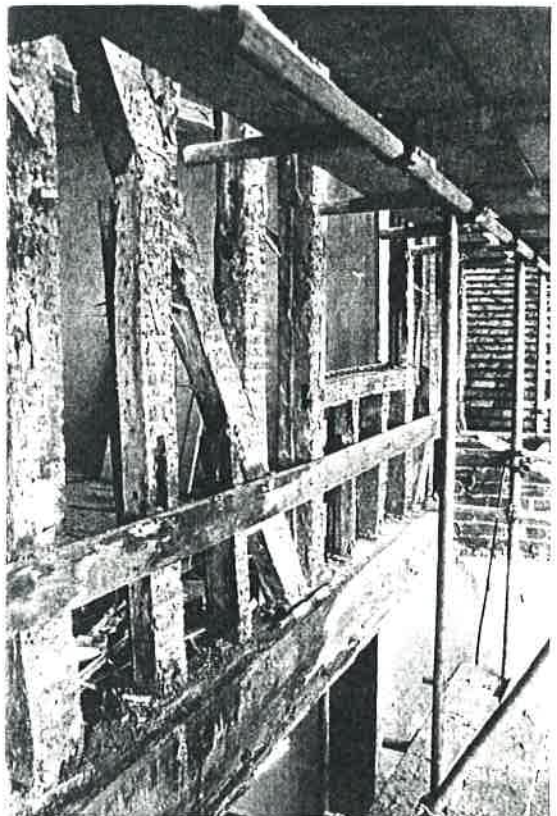


Plate 6:  
North elevation - first floor, west end





Plate 7: Room GF/2 - partly dismantled passage wall supporting principal joist

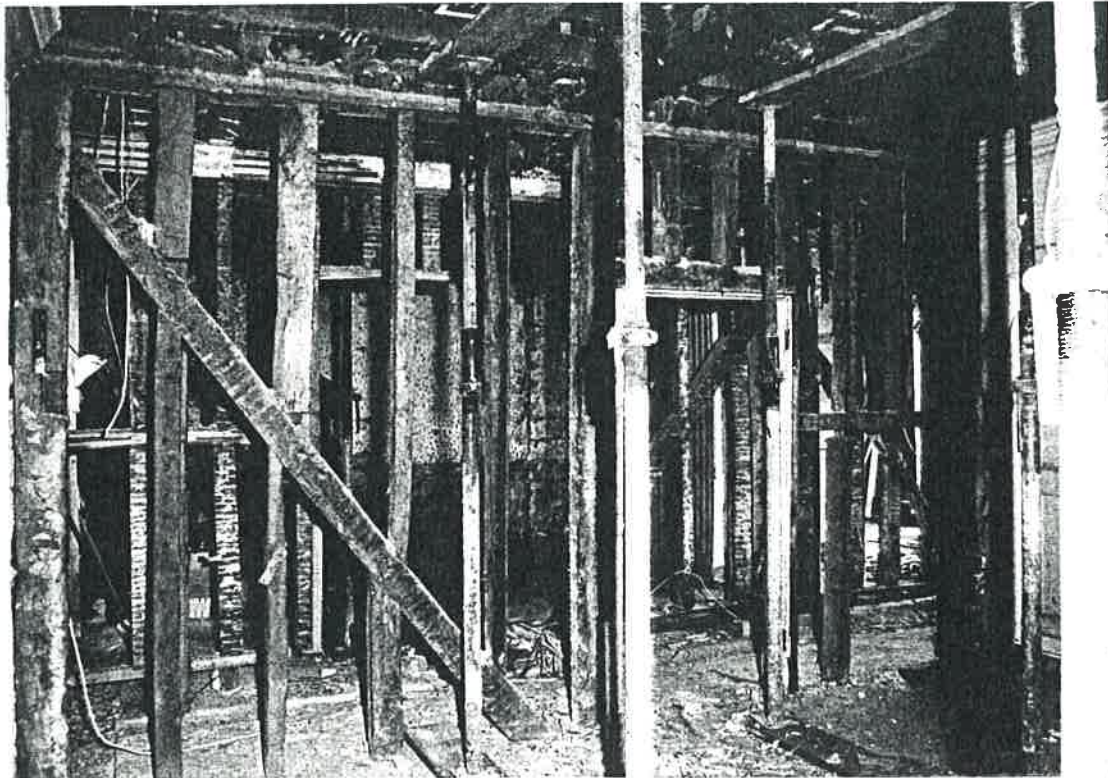


Plate 3: Room GF/3 - passage wall supporting principal joist



Plate 9:  
Passage GF/5 - common joists resting on the passage walls

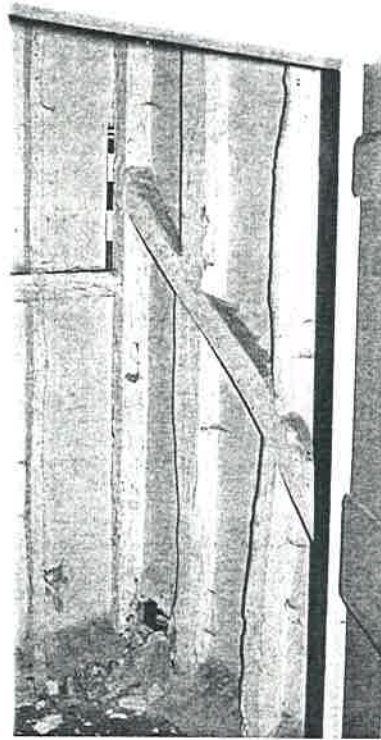


Plate 10:  
Room GF/2 - cupboard showing back of passage wall on right



Plate 11:  
Detail of staircase



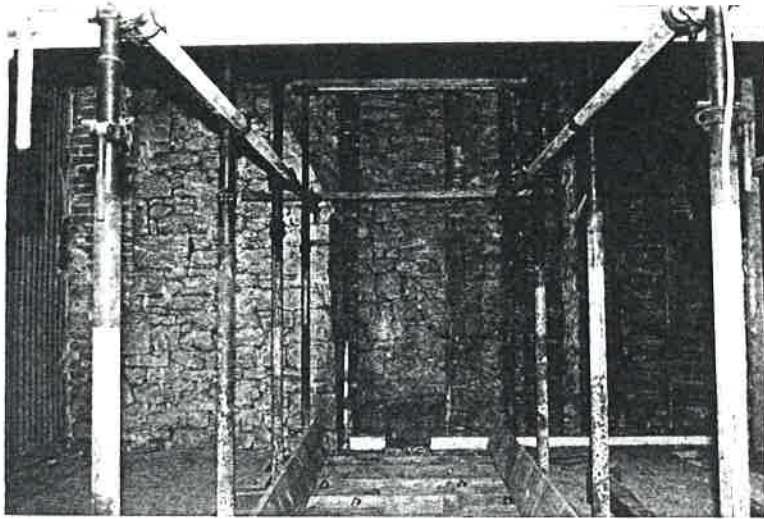


Plate 12:  
Room 1F/2 - showing west wall abutting chimney stack of adjacent property

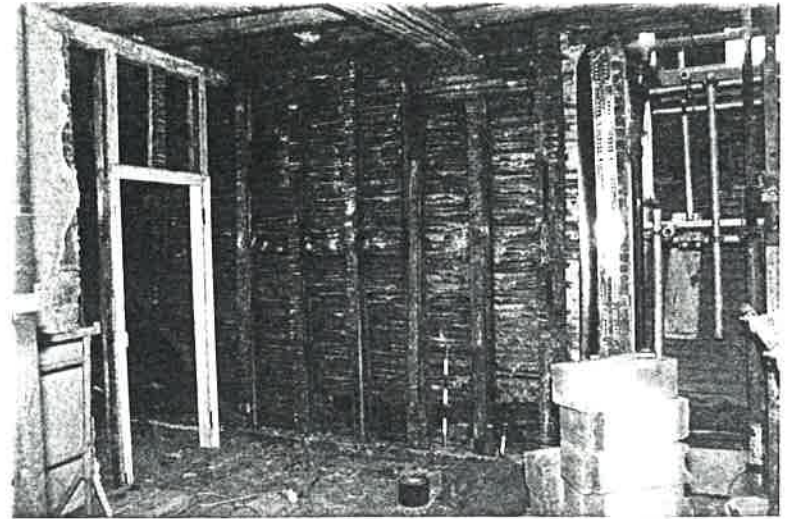


Plate 13:  
Room 1F/1 - continuation of west wall with principal joist detail

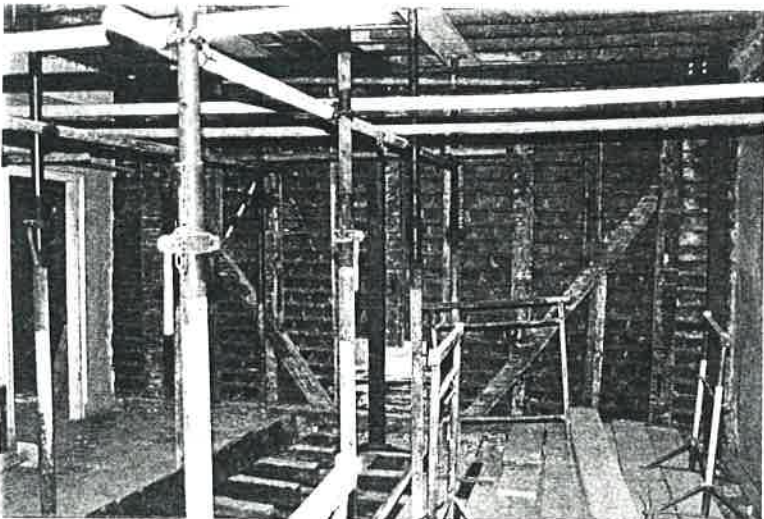


Plate 14:  
Room 1F/3 - east wall (after removal of principal joists and insertion of steels)

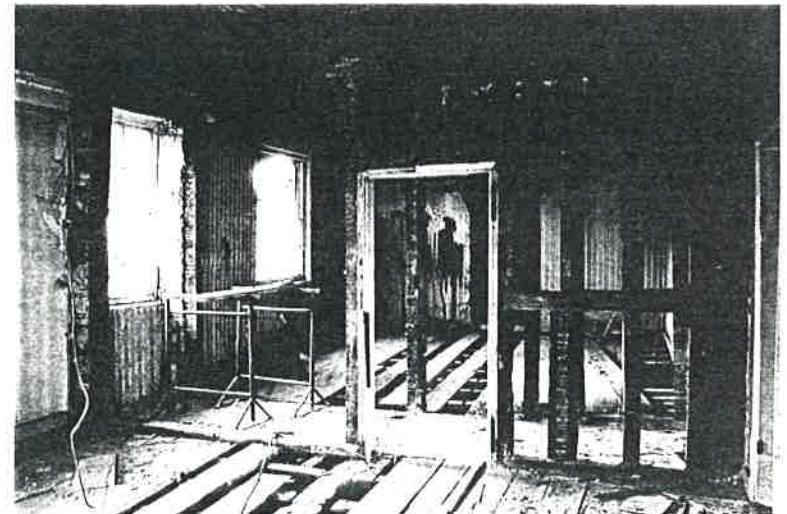


Plate 15:  
Rooms 1F/2/3/5/6 - showing relationship of principal joists to passage wall (after partial removal of passage walls)



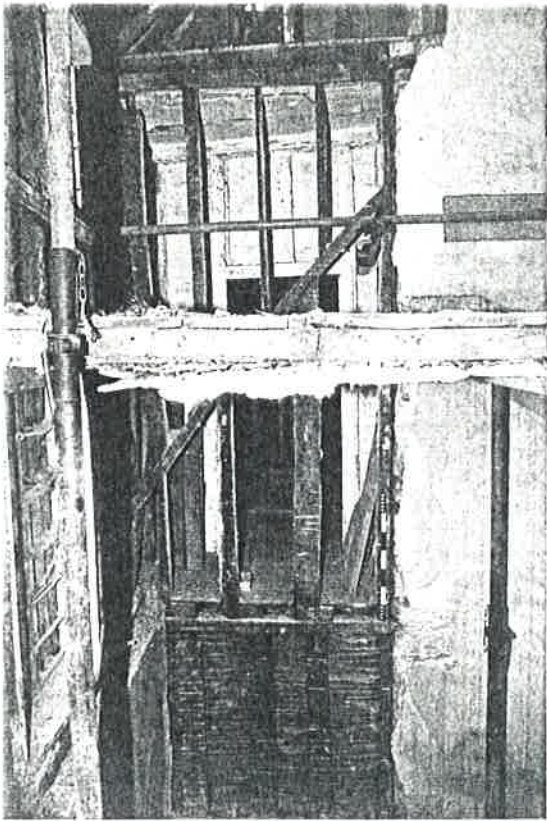


Plate 16:  
South wall of staircase showing relationship of stud walls  
to chimney stack



Plate 17:  
Room 1F/3 cupboard - south face of wall shown in plate 16



Plate 18:  
Room 1F/2 west wall - detail of chimney of adjacent property

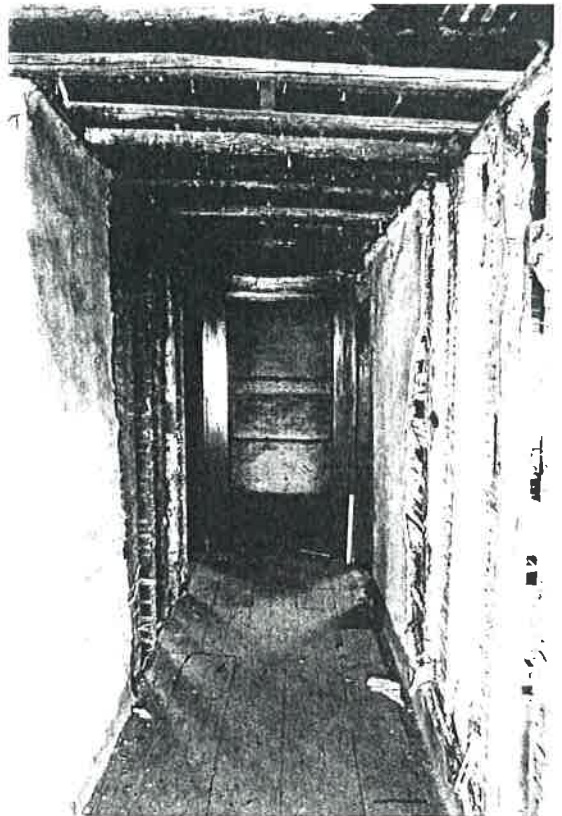


Plate 19:  
Room 2F/5 - south end of former passage looking south:



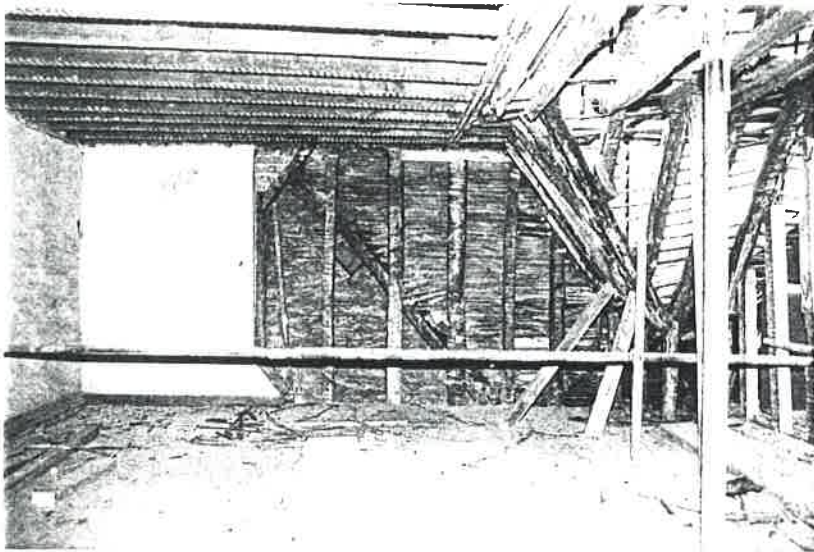


Plate 20:  
Room 21/3 west wall - former gable and chimney stack of adjacent property

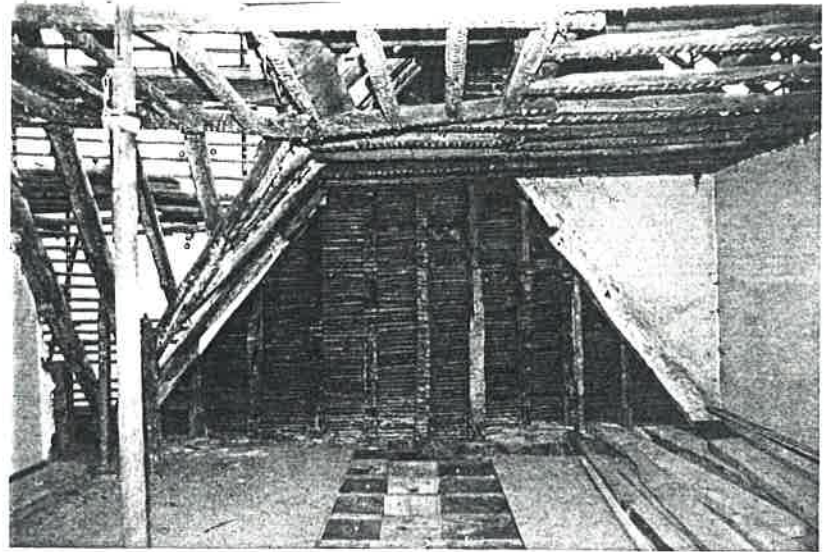


Plate 21:  
Room 21/3 east wall - former gable-end truss showing site of clasped purlins

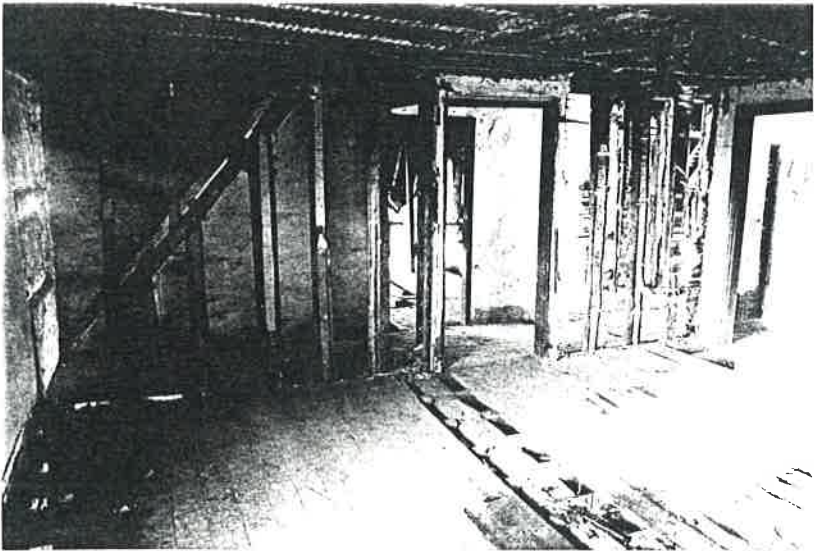


Plate 22:  
Room 21/3 - west wall (now removed) showing incorporated common rafter

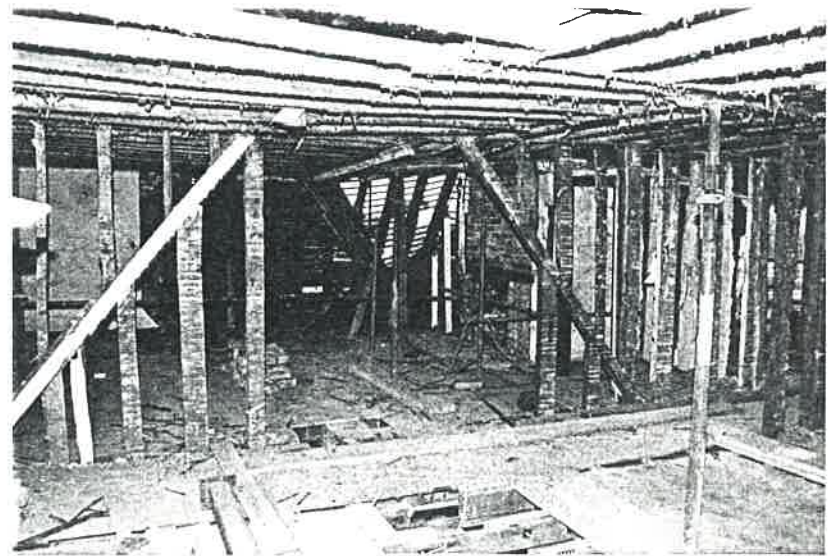


Plate 23:  
Room 21/2 - east wall from east showing incorporated common rafters



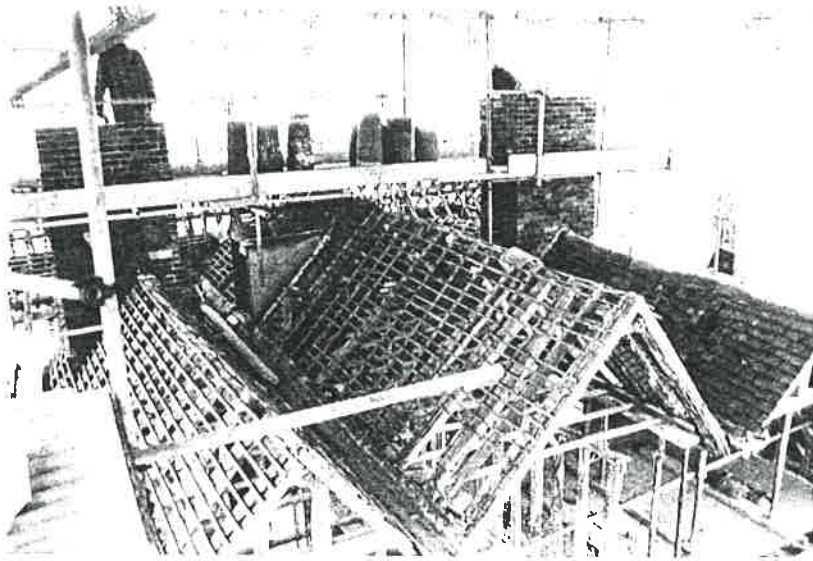


Plate 24:  
Northern roofs, east, central and west ridges, from the north-east

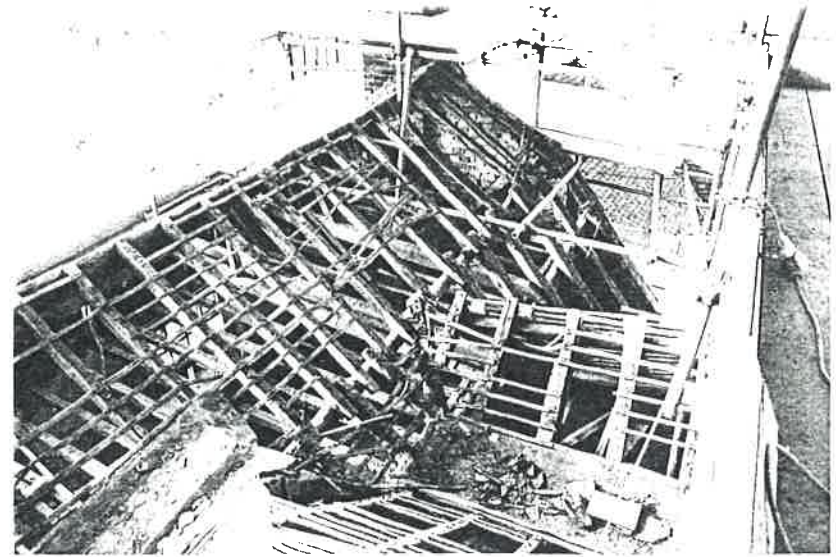


Plate 25:  
Southern roof showing change of pitch at former ridge

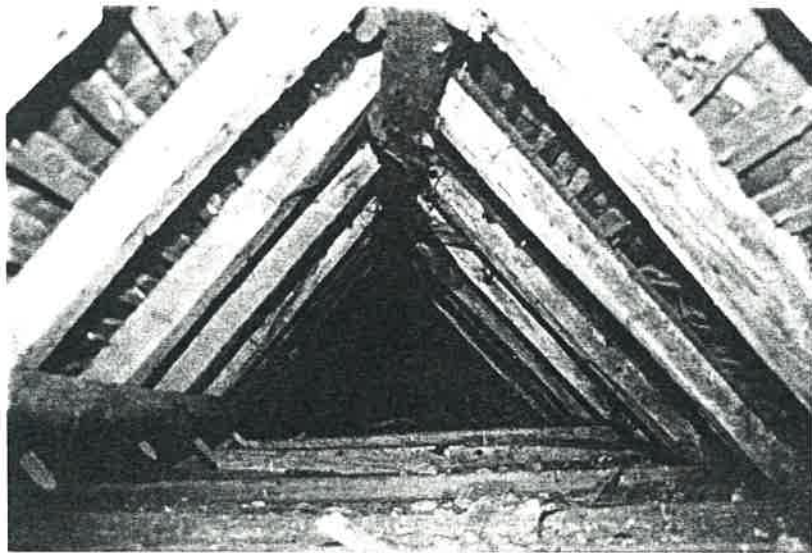


Plate 26:  
Northern roofs, east ridge - rafters pegged to round purlin

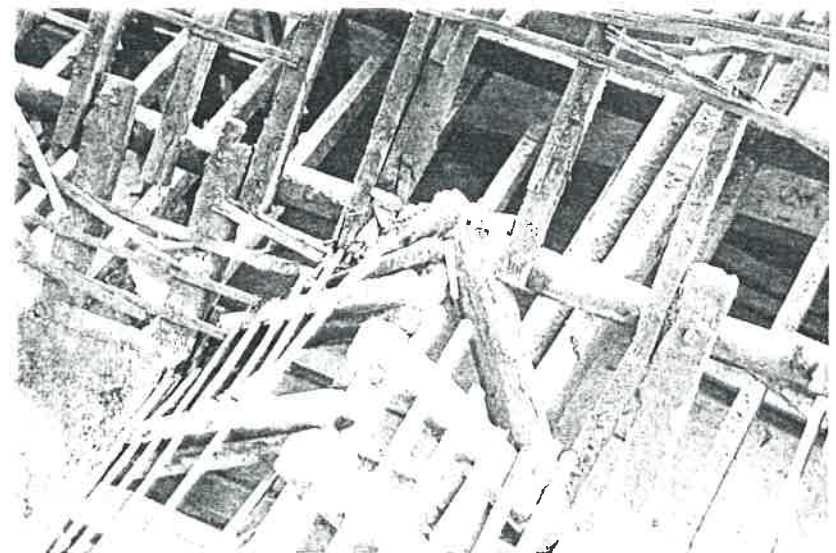


Plate 27:  
Junction of west ridge and south roof



## OXFORD ARCHAEOLOGICAL UNIT

Janus House, Osney Mead, Oxford, OX2 0ES  
Telephone: 01865 243888 Fax: 01865 793496



---

Director: David Miles B.A., F.S.A., M.I.F.A.  
Oxford Archaeological Unit Limited. Registered Office: Janus House, Osney Mead  
Registered Charity Number: 285627 Private Limited Company Number: 1618597