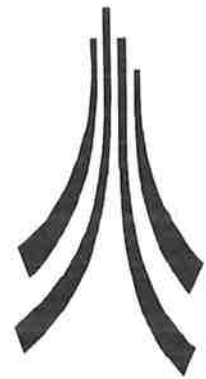


LANCASTER
UNIVERSITY
ARCHAEOLOGICAL
UNIT



June 1994

Thwaites Fell Archaeological Survey Site Gazetteer

Lake District National Park Survey

Lancaster University Archaeological Unit

THWAITES FELL LDNPS SURVEY CATALOGUE

PRN 9125

9125 SITENAME= **Hodgewife Well**
LOCALAUTHORITY= **COPELAND PARISH= MILLOM WITHOUT**
NGR= **SD 169900** HEIGHTOD= **300m-330m**
1:10000PLAN= **SD 18 NE**
DESCRIPTION=

1 - Stone Bank

A discontinuous linear, stone bank defined by short small sections of bank and a longer bank:

a) Four ill defined grassy mounds with small and medium stones, loose and protruding.

Length 6m width 3m height 0.1m (84/1744)

b) An ill defined grassy ridge with few small stones protruding.

Length 0m width 1.5m height 0.05m (84/1747)

2 - Round Cairn

Good condition - Fairly well defined grassy mound with small and medium stones protruding from turf, also many loose. There is a slight depression at centre.

Diam. 8m height 0.5m (84/1746)

3 - Clearance Cairn

Poor condition - Ill defined grassy mound with small and medium stones, loose and protruding from turf.

Length 5m width 3.5m height 0.1m (84/1748)

4 - Clearance Cairn

Poor condition - Ill defined scatter of small and medium stones, loose and protruding from turf.

Diam. 4m height 0.1m (84/1749)

5 - Clearance Cairn

Poor condition - Fairly well defined grassy mound with loose and protruding small and medium stones.

Diam. 5.25m height 0.4m (84/1750)

6 - Clearance Cairn

Poor condition - Fairly well defined scatter of small and medium stones protruding from turf.

Diam. 4.75m height 0.3m (84/1751)

7 - Clearance Cairn

Poor condition - Ill defined grassy mound with small and medium stones, loose and protruding from turf.

Length 6.5m width 4m height 0.3m (84/1752)

TYPE/PERIOD-GEN/PERIOD-SPEC/FORM= Cairnfield/Unknown//;Stone
Bank//;
CLAUSURVEYNO.= 1-7
ARCHHISTORY= Full survey/Lancaster University Archaeological Unit/1984
VISITS= Quartermaine, J & Leech, R. LUAU/4-1984; Quartermaine, J. LUAU/9-
1992

PRN 9126

9126 SITENAME= **Logan Beck**
LOCALAUTHORITY= **COPELAND PARISH= MILLOM WITHOUT**
NGR= **SD 174902** HEIGHTOD= **225m-230m**
1:10000PLAN= **SD 19 SE**
DESCRIPTION=

8 - Clearance Cairn

Poor condition - Ill defined grassy mound with small and medium stones protruding from turf, some loose in centre.

Diam. 5m height 0.1m (84/1740)

9 - Clearance Cairn

Poor condition - Very ill defined grassy patch with a few stones protruding, possibly not a feature. Diam. 2.7m height 0.1m (84/1739)

10 - Clearance Cairn

Poor condition - Ill defined grassy mound with small and medium stones protruding from turf.

Diam. 3.95m height 0.15m (84/1738)

11 - Clearance Cairn

Poor condition - Ill defined grassy mound with small and medium stones protruding from turf.

Diam. 3.65m height 0.1m (84/1737)

12 - Clearance Cairn

Poor condition - Fairly well defined scatter of loose small and medium stones, depression in centre.

Diam. 2.75m height 0.05m (84/1736)

13 - Clearance Cairn

Poor condition - Ill defined grassy mound with small stones protruding.

Diam. 4.55m height 0.25m (84/1734)

14 - Clearance Cairn

Poor condition - Fairly well defined scatter of loose small and medium stones, large boulder at W end. Aligned E-W.

Length 7.1m width 4.1m height 0.1m (84/1733)

15 - Clearance Cairns

Two adjacent small clearance cairns:

a) Poor condition - Ill defined grassy mound with small and medium stones protruding from turf. Aligned E-W.

Length 5.6m width 3.7m height 0.05m (84/1731)

b) Poor condition - Ill defined grassy mound with small and medium stones protruding from turf.

Diam. 3.5m height 0.1m (84/1732)

16 - Clearance Cairn

Poor condition - Poorly defined scatter of loose small and medium stones, some protruding from turf.

Diam. 4.55m height 0.1m (84/1735)

17 - Clearance Cairn

Poor condition - Ill defined grassy mound with small and medium stones protruding from turf. Aligned ENE-WSW.

Length 4.8m width 2.4m height 0.1m (84/1730)

18 - Clearance Cairn

Poor condition - Ill defined grassy mound with small and medium stones protruding from turf.

Diam. 4.35m height 0.15m (84/1724)

19 - Clearance Cairn

Poor condition - Ill defined grassy mound with small and medium stones protruding from turf.

Diam. 4.05m height 0.15m (84/1723)

20 - Clearance Cairn

Poor condition - Poorly defined grassy mound with small and medium stones protruding from turf.

Diam. 5.05m height 0.1m (84/1722)

21 - Clearance Cairn

Poor condition - Fairly well defined scatter of small and medium stones, loose and protruding from turf.

Diam. 3.7m height 0.0m (84/1725)

22 - Clearance Cairn

Poor condition - Probably natural scatter of loose small and medium stones, and a few large boulders.

Length 5.3m width 3.9m height 0.05m (84/1758)

23 - Clearance Cairn

Poor condition - Ill defined grassy mound with small and medium stones protruding from turf.

Diam. 4.15m height 0.1m (84/1726)

24 - Clearance Cairn

Poor condition - Ill defined grassy mound with small and medium stones protruding from turf, some loose to E side.

Diam. 3.45m height 0.1m (84/1727)

25 - Clearance Cairn

Poor condition - Ill defined grassy mound with small and medium stones protruding from turf, some loose at NW and S edges.

Length 6m width 3.9m height 0.05m (84/1728)

26 - Clearance Cairn

Poor condition - Very ill defined grassy mound with few small stones protruding.

Diam. 3.2m height 0.05m (84/1729)

27 - Clearance Cairn

Two small adjacent clearance type cairns:

a) Poor condition - Ill defined grassy mound with small and medium stones protruding from turf.

Diam. 2.5m height 0.1m (84/1760)

b) Poor condition - Ill defined grassy mound with small and medium stones protruding from turf.

Diam. 2.8m height 0.15m (84/1721)

28 - Clearance Cairn

Poor condition - Fairly well defined grassy mound with small and medium stones protruding from turf.

Diam. 2.7m height 0.1m (84/1718)

29 - Clearance Cairn

Poor condition - Ill defined grassy mound with small and medium stones protruding from turf.

Diam. 2.95m height 0.1m (84/1719)

30 - Clearance Cairn

Poor condition - Very ill defined grassy mound with small and medium stones protruding from turf.

Diam. .05m height 00m (84/1720)

31 - Clearance Cairn

Poor condition - Ill defined grassy mound with small and medium stones protruding from turf.

Diam. 4.25m height 0.1m (84/1717)

32 - Clearance Cairn

Poor condition - Fairly well defined grassy mound with small and medium stones protruding from turf.

Diam. 3.25m height 0.3m (84/1655)

32 - Clearance Cairn

Poor condition - Ill defined grassy mound with small and medium stones protruding from turf.

Diam. 5m height 0.3m (84/1656)

33 - Clearance Cairn

Poor condition - Fairly well defined grassy mound with stones protruding, small and medium stones. Large stone at ENE.

Diam. 4.8m height 0.3m (84/1654)

TYPE/PERIOD-GEN/PERIOD-SPEC=**Cairnfield/Unknown//;Stone Bank///;**

CLAUSURVEYNO.= **8-33**

ARCHHISTORY= Full survey/Lancaster University Archaeological Unit/1984

VISITS= Quartermaine, J & Leech, R. LUAU/4-1984; Quartermaine, J. LUAU/9-1992

PRN 9127

9127 SITENAME= **West of Smallthwaite Forest**

LOCALAUTHORITY= **COPELAND PARISH= MILLOM WITHOUT**

NGR= **SD 173900** HEIGHTOD= **270m**

1:10000PLAN= **SD 18 NE**

DESCRIPTION=

34 - Clearance Cairn

Poor condition - Ill defined grassy mound with small stones protruding.

Diam. 2.65m height 0.1m (84/1634)

35 - Clearance Cairn

Poor condition - Ill defined grassy mound with small and medium stones protruding from turf.

Diam. 3.2m height 0.1m (84/1633)

36 - Clearance Cairn

Poor condition - Ill defined mound with small stones protruding from turf.

Diam. 2.15m height 0.05m (84/1631)

37 - Clearance Cairn

Poor condition - Ill defined grassy mound with scatter of stones, some protruding from turf.

Diam. 2.8m height 0.1m (84/1632)

38 - Clearance Cairn

Poor condition - Ill defined area with small stones protruding from turf.

Diam. 2.9m height 0.1m (84/1630)

39 - Hut structure ?

Poor condition - Circular structure, possible hut circle, quite well defined, small, medium and large stones protruding from turf.

Length 0m width 0m height 0.2m (84/1629)

TYPE/PERIOD-GEN/PERIOD-SPEC/FORM=

Cairnfield/Unknown//;Hut/Prehistoric//

CLAUSURVEYNO.= **34-39**

ARCHHISTORY= Full survey/Lancaster University Archaeological Unit/1984
VISITS= Quartermaine, J & Leech, R. LUAU/4-1984; Quartermaine, J. LUAU/9-1992

PRN 9128

9128 SITENAME= **West of Smallthwaite Forest**

LOCALAUTHORITY= **COPELAND** PARISH= **MILLOM WITHOUT**

NGR= SD 176898 HEIGHTOD= **210-250m**

DESCRIPTION=

40 - Clearance Cairn

Poor condition - Very ill defined grassy mound with few small stones protruding.
Diam. 3.45m height 0.1m (84/1716)

41 - Clearance Cairn

Poor condition - Very ill defined grassy mound with few small stones protruding.
Length 4.6m width 2.7m height 0.05m (84/1713)

42 - Clearance Cairn

Poor condition - Ill defined grassy mound with few small and medium stones protruding from turf.
Diam. 4.55m height 0.1m (84/1715)

43 - Clearance Cairn

Poor condition - Ill defined low grassy mound with few small stones protruding.
Diam. 3.55m height 0.05m (84/1705)

44 - Clearance Cairn

Poor condition - Very ill defined grassy mound with small and medium stones protruding from turf.
Diam. 3.6m height 0.1m (84/1708)

45 - Clearance Cairn

Poor condition - Ill defined grassy mound with small and medium stones protruding from turf.
Diam. 5.35m height 0.15m (84/1709)

46 - Clearance Cairn

Poor condition - Ill defined grassy mound with small and medium stones loose and protruding from turf.
Diam. 4.25m height 0.1m (84/1712)

47 - Wall

Poor condition - Quite well defined feature, stones protruding from turf.
Length 40m width 2.5m height 0.05m (84/1711)

48 - Clearance Cairn

Poor condition - Very ill defined grassy mound with small and medium stones protruding from turf.

Diam. 3.1m height 0.05m (84/1710)

49 - Clearance Cairn

Poor condition - Ill defined grassy mound with few small and medium stones protruding from turf.

Diam. 4.55m height 0.0m (84/1707)

50 - Clearance Cairn

Poor condition - Ill defined grassy mound with small stones protruding. Large boulder to NE.

Diam. 4.9m height 0.1m (84/1706)

51 - Clearance Cairn

Poor condition - Ill defined mound with small and medium stones, loose and protruding from turf. One large stone on NE edge protruding from turf.

Diam. 5.25m height 0.3m (84/1695)

52 - Clearance Cairn

Poor condition - Fairly well defined grassy mound with small and medium stones protruding from turf. Loose small and medium stones to NE and NW edges. Aligned ENE-WSW.

Length 8.6m width 6m height 0.6m (84/1696)

53 - Clearance Cairn

Poor condition - Ill defined grassy mound with small and medium stones protruding from turf. Large boulder to N edge. Aligned NE-SW.

Length 7.1m width 5.2m height 0.4m (84/1697)

54 - Clearance Cairn

Poor condition - Ill defined grassy mound with small and medium stones protruding from turf, large boulder at S end. Aligned N-S.

Length 7.1m width 5.1m height 0.15m (84/1703)

55 - Clearance Cairn

Poor condition - Ill defined grassy mound with small and medium stones protruding from turf

Length 5.4m width 3.6m height 0.2m (84/1704)

56 - Clearance Cairn

Poor condition - Ill defined grassy mound with small and medium stones protruding from turf, large boulder to ENE.

Diam. 6.2m height 0.0m (84/1702)

57 - Clearance Cairn

Poor condition - Ill defined grassy mound with few small and medium stones protruding from turf. Aligned NE-SW.

Length 8.4m width 4.8m height 0.3m (84/1701)

58 - Clearance Cairn Poor condition - Ill defined grassy mound with small and medium stones protruding from turf.

Length 6.5m width 5.2m height 0.4m (84/1698)

59 - Clearance Cairn

Poor condition - Quite well defined grassy mound with small and medium stones protruding from turf. Marked depression in centre.

Diam. 6.4m height 0.3m (84/1681)

60 - Clearance Cairn

Three small clearance cairns:

a) Poor condition - Ill defined grassy mound with a few small and medium stones protruding from turf, one large stone protruding from turf at S edge. Aligned NNE-SSW.

Length 4.9m width 3.5m height 0.1m (84/1690)

b) Poor condition - Ill defined scatter of small stones protruding from turf, possibly part of 1690 or could be natural feature.

Diam. 3.25m height 0.05m (84/1691)

c) Poor condition - Ill defined mound, small and medium stones loose and protruding from turf, mostly on W side.

Diam. 4.35m height 0.25m (84/1692)

61 - Clearance Cairn

Poor condition - Very ill defined scatter of small and medium stones, loose and protruding from turf on W side.

Diam. 4.9m height 0.1m (84/1689)

62 - Clearance Cairn

Poor condition - Ill defined mound with small and medium stones protruding from turf.

Diam. 5.5m height 0.35m (84/1682)

63 - Clearance Cairn

Poor condition - Quite well defined mound with small and medium stones loose and protruding from turf, generally more at N end of mound. Aligned NNE-SSW.

Length 6.5m width 5.3m height 0.5m (84/1680)

64 - Clearance Cairns

A small cairn and a spatially associated irregular mass of clearance stone.

a) Small cairn; an ill defined grassy mound with few small and medium stones protruding from turf.

Diam. 2.4m height 0.05m (84/1699)

b) A possibly disturbed area of clearance stone; it is an ill defined grassy mound with small and medium stones protruding from turf. Irregular plan.

Length 7.6m width 3.7m height 0.2m (84/1700)

65 - Clearance Cairn

Poor condition - Ill defined scatter of small stones, loose and protruding from turf. One large stone protruding from turf at S end.

Diam. 3.3m height 0.2m (84/1687)

66 - Clearance Cairn

Poor condition - Extremely ill defined, possibly natural feature.

Length 3.4m width 1.9m height 0.05m (84/1688)

67 - Clearance Cairn

Poor condition - Ill defined grassy mound with small and medium stones protruding from turf.

Diam. 4.7m height 0.2m (84/1683)

68 - Clearance Cairn

Poor condition - Quite well defined mound with small and medium stones loose and protruding from turf. Aligned NE-SW.

Length 8.3m width 5.6m height 0.45m (84/1679)

69 - Clearance Cairn

Poor condition - Ill defined grassy mound with small and medium stones protruding from turf, possibly two conjoined cairns.

Length 9.4m width 5.6m height 0.3m (84/1678)

70 - Clearance Cairn

Poor condition - Ill defined grassy mound with small stones protruding.

Diam. 3.9m height 0.2m (84/1694)

71 - Clearance Cairn

Poor condition - Ill defined grassy mound with small and medium stones protruding from turf.

Diam. 4.15m height 0.2m (84/1693)

72 - Clearance Cairn

Poor condition - Fairly well defined grassy mound with small and medium stones protruding from turf, large stone to NE.

Length 5.1m width 3.7m height 0.0m (84/1653)

72 - Clearance Cairn

Poor condition - Well defined grassy mound with small and medium stones protruding from turf, large boulder to NE.

Diam. 3.15m height 0.5m (84/1652)

73 - Clearance Cairn

Two small clearance cairns:

a) An ill defined grassy mound with medium stones protruding.

Diam. 2.5m height 0.1m (84/1647)

b) An ill defined grassy mound with small and medium stones protruding from turf.

Diam. 2m height 0.1m (84/1648)

74 - Clearance Cairn

Poor condition - Fairly well defined grassy mound with small and medium stones protruding from turf.

Diam. 4.35m height 0.5m (84/1649)

75 - Clearance Cairn

Poor condition - Fairly well defined grassy mound with small and medium stones protruding from turf, large boulder to E.

Diam. 5.75m height 0.6m (84/1650)

76 - Clearance Cairn

Poor condition - Fairly well defined grassy mound with small and medium stones protruding from turf, large boulder to E. At NE end the furthest 3m could be a separate round cairn.

Length 5.9m width 4.6m height 0.4m (84/1651)

77 - Clearance Cairn

Poor condition - Ill defined grassy mound with small and medium stones protruding from turf.

Diam. 4m height 0.25m (84/1657)

78 - Clearance Cairn

Poor condition - Ill defined grassy mound with small and medium stones protruding from turf.

Diam. 6.6m height 0.45m (84/1658)

79 - Clearance Cairn

Poor condition - Ill defined grassy mound with few small and medium stones protruding from turf.

Length 5.2m width 3.5m height 0.3m (84/1659)

80 - Clearance Cairn

Poor condition - Ill defined grassy mound with few small and medium stones protruding from turf.

Diam. 3.9m height 0.2m (84/1660)

81 - Clearance Cairn

Poor condition - Ill defined grassy mound with few small stones protruding.

Diam. 2.6m height 0.2m (84/1661)

82 - Clearance Cairn

Poor condition - Very ill defined grassy mound with a few small stones protruding.

Diam. 3.45m height 0.15m (84/1662)

83 - Clearance Cairn

Poor condition - Ill defined grassy mound with small and medium stones protruding from turf.

Diam. 3.55m height 0.2m (84/1663)

84 - Clearance Cairn

Fair condition - Fairly well defined scatter of small and medium stones. Aligned N-S.

Length 4.9m width 2.9m height 0.1m (84/1664)

85 - Clearance Cairn

Poor condition - Ill defined grassy mound with small and medium stones protruding from turf. Aligned N-S.

Length 5.2m width 3.6m height 0.2m (84/1666)

86 - Clearance Cairn

Two irregular clearance type cairns: a) A fairly well defined scatter of small and medium stones, some stones under turf. Aligned E-W.

Length 9m width 4.8m height 0.2m (84/1665)

b) An ill defined grassy mound with scattered and protruding small and medium stones.

Diam. 4.7m height 0.1m (84/1667)

87 - Clearance Cairns

Two small clearance cairns:

a) An ill-defined, small and medium stones loose and protruding from turf.

Length 5.7m width 3.8m height 0.25m (84/1756)

b) An ill defined low grassy mound with a scatter of small and medium stones protruding from turf.

Diam. 4.64m height 0.2m (84/1757)

88 - Clearance Cairn

Poor condition - Extremely ill defined grassy mound with a few small stones protruding.

Diam. 3.4m height 0.15m (84/1684)

89 - Clearance Cairn

Poor condition - Ill defined low grassy mound with small stones protruding, one large stone at NE edge of mound.

Diam. 2.6m height 0.2m (84/1755)

90 - Clearance Cairn

Poor condition - Ill defined grassy mound with medium stones protruding.

Diam. 2.6m height 0.1m (84/1753)

91 - Clearance Cairn

Poor condition - Very ill defined scatter of small and medium stones protruding from turf. Aligned ENE-WSW.

Length 9.5m width 4.1m height 0.1m (84/1677)

92 - Clearance Cairn

Poor condition - Very ill defined scatter of small and medium stones, mainly loose and some protruding from turf.

Diam. 3.5m height 0.1m (84/1685)

93 - Clearance Cairn Two adjacent cairns:

a) A fairly well defined scatter of loose small and medium stones.

Diam. 2.75m height 0.05m (84/1754)

b) An ill defined grassy mound with small and medium stones protruding from turf, large boulder on SE.

Diam. 3.1m height 0.2m (84/1668)

94 - Bield

Fair condition - Walls standing up to three courses high - description as given inadequate and needs revisiting.

Diam. 4m height 0.4m (84/1676)

95 - Clearance Cairn

Poor condition - Ill defined grassy mound with small stones protruding.

Diam. 3.9m height 0.3m (84/1642)

96 - Clearance Cairn

Poor condition - Ill defined grassy mound with small, medium and large stones protruding.

Diam. 4.15m height 0.1m (84/1645)

97 - Clearance Cairn

Poor condition - Very ill defined grassy mound.

Diam. 2.8m height 0.1m (84/1646)

98 - Clearance Cairn

Poor condition - Ill defined grassy mound with small and medium stones protruding from turf.

Diam. 4.15m height 0.3m (84/1643)

99 - Clearance Cairn

Poor condition - Ill defined grassy mound with few small stones protruding.

Diam. 2.2m height 0.2m (84/1644)

100 - Clearance Cairn

Poor condition - Pear shaped grassy mound, large stones protruding, ill defined.

Diam. 3m height 0.15m (84/1675)

101 - Clearance Cairn

Poor condition - Very ill defined scatter of small and medium stones loose and protruding from turf.

Diam. 3.65m height 0.1m (84/1686)

102 - Clearance Cairn

Poor condition - Ill defined grassy mound with small and medium stones protruding from turf, large stone to E.

Length 3.9m width 2.3m height 0.1m (84/1640)

103 - Clearance Cairn

Poor condition - Ill defined grassy mound with small and medium stones protruding from turf, possibly disturbed.

Length 4m width 3m height 0.2m (84/1639)

104 - Clearance Cairn

Poor condition - Ill defined grassy mound with a few small stones protruding.

Diam. 2.1m height 0.1m (84/1638)

105 - Clearance Cairn

Poor condition - Ill defined mound with small stones protruding from turf.

Diam. 3.35m height 0.1m (84/1620)

106 - Clearance Cairn

Poor condition - Ill defined grassy mound disturbed in centre. Diam. 3.4m height 0.1m (84/1624)

107 - Clearance Cairn

Poor condition - Ill defined grassy mound with small and medium stones protruding from turf.

Diam. 3.95m height 0.1m (84/1621)

108 - Clearance Cairn

Poor condition - Could be two adjacent small cairns. S part is a grassy mound with stones protruding. N part is a scatter of small stones.

Length 5.7m width 3.7m height 0.1m (84/1637)

109 - Enclosure wall

Poor condition - Fairly well defined grassy mound with a number of small stones protruding.

Length 10.2m width 2.6m height 0.05m (84/1626)

110 - Clearance Cairn

Poor condition - Ill defined grassy mound with small and medium stones protruding from turf, two large stones to NE.

Length 4.2m width 3.1m height 0.1m (84/1625)

111 - Clearance Cairn

Poor condition - Quite well defined grassy mound with small and medium stones protruding from turf. Large boulder to NE.

Diam. 4.8m height 0.0m (84/1636)

112 - Clearance Cairn

Poor condition - Ill defined grassy mound with stones protruding.

Diam. 2.95m height 0.1m (84/1635)

113 - Clearance Cairn

Poor condition - Ill defined grassy mound with a few small stones protruding.

Diam. 2.75m height 0.0m (84/1627)

114 - Clearance Cairn

Poor condition - Ill defined grassy mound with small and medium stones protruding from turf, large boulder to NE.

Diam. 3.2m height 0.0m (84/1628)

115 - Clearance Cairn

Poor condition - Ill defined grassy mound with few small stones protruding.

Diam. 2.85m height 0.1m (84/1623)

116 - Clearance Cairn

Poor condition - Ill defined grassy mound with a few small stones protruding.

Diam. 2.9m height 0.1m (84/1622)

117 - Stone Bank

Discontinuous stone bank, with an irregular alignment and irregularly defined. It comprises four main sections:

a) Fair condition - Wall defined as scatter of small and medium stones, some protruding from turf.

height 0.05m (84/1618)

b) Poor condition - Less well defined than section a), fewer small and medium stones protruding from turf.

Length 26m NNW-SSE. height 0.1m (84/1619)

c) Fair condition - Quite well defined, scatter of stones under turf. Extends E-W.

Length 14.1m width 2.5m height 0.1m (84/1615)

d) Fair condition - Quite well defined scatter of loose small and medium stones, edges less well defined. Extends NNE-SSW.

Length 6.9m width 2.9m (84/1616)

118 - Clearance Cairn

Poor condition - Ill defined grassy mound with small and medium stones protruding from turf.

Diam. 3m height 0.1m (84/1641)

119 - Clearance Cairns

Two adjacent clearance type cairns:

a) Poor condition - Ill defined loose stone scatter.

Diam. 5.85m height 0.05m (84/1595)

b) Poor condition - Ill defined loose stone scatter

Diam. 3.1m height 0.05m (84/1594)

120 - Clearance Cairn

Poor condition - Ill defined, stones loose and protruding from turf, large boulder to E.

Diam. 5.1m height 0.3m (84/1593)

122 - Clearance Cairns

Two adjacent clearance type cairns:

a) Poor condition - Ill defined mound, small stones protruding from turf.

Diam. 2m height 0.05m (84/1741)

b) Poor condition - Poorly defined, small stones protruding from turf.

Diam. 1.5m height 0.1m (84/1742)

123 - Clearance Cairn

Poor condition - Poorly defined, with small stones protruding from turf.

Length 5m width 2.8m height 0.1m (84/1839)

124 - Clearance Cairn

Poor condition - Quite well defined mound, many small stones protruding.

Diam. 3.8m height 0.2m (84/1743)

125 - Clearance Cairns

Two adjacent clearance type cairns:

a) Poor condition - Ill defined, small and medium stones protruding from turf.

Diam. 3.6m height 0.1m (84/1602)

b) Poor condition - Ill defined, small and medium stones protruding from turf.

Diam. 4.35m height 0.1m (84/1601)

126 - Clearance Cairn

Poor condition - Grassy mound with many loose stones

Diam. 4.3m height 0.25m (84/1603)

127 - Clearance Cairn

Poor condition - Grassy mound with stones loose and protruding from turf.

Diam. 4.8m height 0.1m (84/1606)

128 - Clearance Cairn

Two adjacent, elongated clearance type cairns:

a) Poor condition - Ill defined mound with small and medium stones protruding from turf.

Length 4.9m width 3.4m height 0.0m (84/1604)

b) Poor condition - Loose scattered and protruding stones. Aligned E-W.

Length 4.9m width 2.7m height 0.3m (84/1605)

129 - Clearance Cairn

Poor condition - Ill defined, stones protruding.

Diam. 3.4m height 0.1m (84/1600)

130 - Clearance Cairn

Poor condition - Ill defined, stones protruding. Diam. 3.15m height 0.1m (84/1599)

131 - Clearance Cairn

Poor condition - Ill defined edges, few stones protruding.

Diam. 4.65m height 0.25m (84/1592)

132 - Clearance Cairn

Poor condition - Ill defined mound with stones protruding.

Diam. 3.6m height 0.1m (84/1591)

133 - Clearance Cairn

Poor condition - Grassy mound with small and medium stones protruding from turf.

Diam. 3.3m height 0.25m (84/1590)

134 - Stone Bank

A rectilinear shaped stone bank stones protruding from turf. It is in a poor condition, it is ill-defined.

Length 28m width 0m height 0.0m (84/1585) (84/1582)

135 - Clearance Cairn

Poor condition - Grassy mound with few stones protruding.

Diam. 3.85m height 0.25m (84/1589)

136 - Clearance Cairn

Poor condition - Grassy mound with stones protruding.

Diam. 5.2m height 0.25m (84/1588)

137 - Clearance Cairn

Poor condition - Grassy mound with stones protruding, large stone to E.

Diam. 3.3m height 0.6m (84/1613)

138 - Clearance Cairn

Poor condition - Poorly defined , few stones protruding.

Diam. 4.4m height 0.3m (84/1586)

139 - Clearance Cairn

Poor condition - Ill defined mound with stones protruding from turf.

Diam. 4.3m height 0.1m (84/1580)

140 - Clearance Cairn

Poor condition - Low grassy mound with stones protruding.

Diam. 3m height 0.1m (84/1612)

141 - Clearance Cairn

Poor condition - Small loose stones to WSW, large boulder to ENE.

Length 6.3m width 4.4m height 0.2m (84/1607)

142 - Clearance Cairn

Poor condition - Ill defined grassy mound with small stones protruding from turf.

Diam. 4.4m height 0.2m (84/1579)

143 - Clearance Cairn

Poor condition - Ill defined grassy mound with small stones protruding.

Diam. 3.55m height 0.3m (84/1578)

144 - Ring Cairn ?

Fair condition - Fairly well defined with many loose stones, edges less well defined with small stones protruding from turf. Either a ring cairn or a heavily robbed round cairn.

Diam. 8.25m height 0.3m (84/1574)

145 - Clearance Cairn

Poor condition - Ill defined grassy mound with small stones protruding.

Diam. 3.05m height 0.2m (84/1573)

146 - Clearance Cairn

Poor condition - Grassy mound with stones protruding.

Diam. 4.1m height 0.15m (84/1610)

147 - Clearance Cairn

Poor condition - Low grassy mound with stones protruding, ill defined.

Diam. 2.95m height 0.1m (84/1611)

148 - Clearance Cairn

Two adjacent clearance type cairns:

a) An ill defined grassy mound with a few small stones protruding.

Diam. 3.25m height 0.2m (84/1570)

b) It comprises loose and protruding stones and is ill defined.

Diam. 4m height 0.1m (84/1609)

149 - Clearance Cairn

Poor condition - Ill defined grassy mound with small stones protruding.

Diam. 4.1m height 0.2m (84/1571)

150 - Clearance Cairn

Poor condition - Fairly well defined grassy mound with small stones protruding.

Length 5m width 3.6m height 0.0m (84/1572)

151 - Clearance Cairn

Poor condition - Pile of loose stones in centre, protruding from turf elsewhere.

Aligned NNW-SSE.

Length 7.7m width 4.1m height 0.3m (84/1569)

152 - Clearance Cairn

Poor condition - Few stones protruding.

Diam. 3.8m height 0.15m (84/1568)

153 - Clearance Cairn

Poor condition - Ill defined spread of stones protruding from turf.

Diam. 3.45m height 0.1m (84/1551)

154 - Clearance Cairn

Poor condition - Ill defined spread of stones protruding from turf.

Diam. 3.6m height 0.1m (84/1550)

155 - Clearance Cairn

Fair condition - Grassy mound with stones protruding.

Diam. 3.4m height 0.2m (84/1549)

156 - Clearance Cairn

Poor condition - Quite well defined, several small stones loose in centre and protruding from edges.

Diam. 4.8m height 0.2m (84/1567)

157 - Clearance Cairn

Poor condition - Grassy mound with stones protruding.

Diam. 3.65m height 0.2m (84/1566)

158 - Clearance Cairn

Poor condition - Very ill defined grassy mound, some small and medium stones protruding from turf.

Diam. 3.75m height 0.05m (84/1608)

159 - Clearance Cairn

Two adjacent clearance type cairns:

a) Poor condition - Grassy mound with few stones protruding, ill defined.

Diam. 3.75m height 0.2m (84/1565)

b) Poor condition - Small and medium stones protruding, poorly defined.

Diam. 4m height 0.2m (84/1564)

160 - Clearance Cairn

Poor condition - Ill defined grassy mound with small stones protruding. Aligned NW-SE

Length 3.3m width 2.3m height 0.1m (84/1563)

161 - Clearance Cairn

Two adjacent clearance type cairns:

a) A poorly defined mound with few stones protruding.

Diam. 3.1m height 0.15m (84/1561)

b) Poorly defined edges, possibly disturbed in centre. Poorly defined.

Diam. 4.2m height 0.15m (84/1562)

162 - Clearance Cairn

Poor condition - Ill defined scatter of stones protruding. Aligned WNW-ESE.

Length 4.5m width 2m height 0.05m (84/1614)

163 - Clearance Cairn

Fair condition - Low but well defined grassy mound with stones protruding.

Diam. 3.3m height 0.1m (84/1552)

164 - Clearance Cairn

Fair condition - Grassy mound with many stones protruding.

Diam. 4m height 0.2m (84/1553)

165 - Clearance Cairn

Poor condition - Ill defined spread of stones protruding from turf.

Diam. 2.4m height 0.1m (84/1554)

166 - Clearance Cairn

Poor condition - Badly defined boulder spread.

Diam. 3.05m height 0.1m (84/1555)

167 - Clearance Cairn

Two adjacent clearance type cairns:

a) Poor condition - Grassy mound with stones protruding. Poorly defined.

Diam. 2.6m height 0.1m (84/1557)

b) Poor condition - Grassy mound with stones protruding. Poorly defined.

Diam. 2.1m height 0.15m (84/1556)

168 - Clearance Cairn

Poor condition - Ill defined, few stones protruding, two large boulders protruding to NE.

Diam. 3.1m height 0.1m (84/1558)

169 - Clearance Cairns

Two adjacent small, clearance type cairns:

a) Fair condition - Grassy mound with a few stones protruding.

Diam. 2m height 0.2m (84/1545)

b) Fair condition - Low grassy mound with a few stones protruding.

Diam. 2.15m height 0.1m (84/1546)

170 - Clearance Cairn

Fair condition - Grassy mound with stones protruding. Possibly disturbed.
Diam. 3.7m height 0.2m (84/1548)

171 - Clearance Cairn

Good condition - Grassy mound with many stones protruding, especially at N end.
Aligned NNE-SSW.
Length 7m width 3.8m height 0.3m (84/1547)

172 - Clearance Cairn

Poor condition - Possible cairn, ill defined spread of stones protruding from turf.
Diam. 2.85m height 0.1m (84/1544)

173 - Clearance Cairn

Fair condition - Grassy mound with stones protruding. Aligned ENE-WSW.
Length 5.2m width 2.9m height 0.2m (84/1543)

174 - Clearance Cairn

Poor condition - Ill defined mound with a few stones protruding.
Diam. 2.35m height 0.1m (84/1542)

175 - Clearance Cairn

Good condition - Well defined grassy mound with many stones protruding.
Diam. 5.1m height 0.3m (84/1541)

176 - Clearance Cairn

Poor condition - Ill defined grassy mound with small and one large stones protruding.
Diam. 2.9m height 0.3m (84/1528)

177 - Clearance Cairn

Poor condition - Ill defined grassy mound with small stones protruding.
Diam. 3.4m height 0.2m (84/1527)

178 - Clearance Cairn

Poor condition - Ill defined grassy mound with small stones protruding. Aligned
NNE-SSW.
Length 6.5m width 4m height 0.2m (84/1526)

179 - Clearance Cairn

Poor condition - Grassy mound with a few small stones protruding.
Diam. 2m height 0.1m (84/1539)

180 - Clearance Cairn

Fair condition - Grassy mound with a few stones protruding.
Diam. 2.9m height 0.2m (84/1540)

181 - Clearance Cairn

V Poor condition - Ill defined grassy mound with a few small stones protruding.
Diam. 2.6m height 0.1m (84/1532)

182 - Clearance Cairn

Poor condition - Loose rubble mostly to N, poorly defined.

Diam. 3.55m height 0.1m (84/1559)

183 - Clearance Cairn

Poor condition - Quite well defined grassy mound with small stones protruding.

Diam. 3.4m height 0.3m (84/1538)

185 - Clearance Cairn

Poor condition - Medium sized boulders protruding from turf. Large boulder to N end.

Diam. 3.2m height 0.1m (84/1669)

186 - Clearance Cairn

Poor condition - Many loose medium sized boulders to the N, small and medium stones protruding from turf. Aligned NW-SE.

Length 7.4m width 4.8m height 0.1m (84/1670)

187 - Clearance Cairn

Poor condition - Ill defined grassy mound with small and medium stones protruding from turf. Aligned ENE-WSW.

Length 5m width 3.6m height 0.1m (84/1673)

188 - Clearance Cairn

Poor condition - Ill defined grassy mound with small and medium stones protruding from turf.

Diam. 3.95m height 0.1m (84/1672)

189 - Clearance Cairn

Poor condition - Grassy mound with small and medium stones protruding from turf.

Diam. 3.85m height 0.1m (84/1671)

191 - Clearance Cairn

Poor condition - Ill defined grassy mound with small stones protruding..

Length 5.4m width 2.7m height 0.1m (84/1525)

192 - Clearance Cairn

Poor condition - Ill defined grassy mound with small stones protruding.

Diam. 2.4m height 0.1m (84/1524)

193 - Clearance Cairn

Poor condition - Ill defined grassy mound with small stones protruding.

Diam. 2.95m height 0.1m (84/1522)

194 - Clearance Cairn

Poor condition - Ill defined grassy mound with small stones protruding.

Diam. 3.8m height 0.1m (84/1523)

195 - Clearance Cairn

Poor condition - Ill defined grassy mound with small and medium stones protruding from turf. Aligned E-W.

Length 4.7m width 2.8m height 0.1m (84/1674)

196 - Clearance Cairn

Poor condition - Ill defined grassy mound with small stones protruding.
Diam. 4m height 0.2m (84/1513)

197 - Wall

Poor condition - Possible wall, large stone at one end.
Length 15m width 2.5m height 0.1m (84/1512)

198 - Clearance Cairn

Poor condition - Ill defined grassy mound with small stones protruding.
Diam. 3.3m height 0.1m (84/1533)

199 - Clearance Cairn

Poor condition - Possible cairn, several stones protruding. Aligned WSW-ENE.
Length 4.9m width 3.3m height 0.1m (84/1534)

200 - Clearance Cairn

Poor condition - Very ill defined grassy mound with small stones protruding.
Diam. 3.6m height 0.1m (84/1514)

201 - Clearance Cairn

Poor condition - Fairly well defined grassy mound with small and large stones protruding.
Length 7m width 3.8m height 0.2m (84/1515)

202 - Clearance Cairn

Poor condition - Ill defined grassy mound with small stones protruding.
Diam. 4.1m height 0.2m (84/1535)

203 - Clearance Cairn

Poor condition - Ill defined grassy mound with small stones protruding.
Diam. 2.25m height 0.1m (84/1536)

204 - Uncertain

Poor condition - Ill defined feature, tapering at each end. Max width 4m. See plan for details.
Length 0m width 0m height 0m (84/1531)

205 - Clearance Cairn

Poor condition - Ill defined grassy mound with small stones protruding.
Diam. 4.75m height 0.3m (84/1520)

206 - Clearance Cairn

Poor condition - Ill defined grassy mound with small stones protruding.
Diam. 3.35m height 0.1m (84/1519)

207 - Clearance Cairn

Poor condition - Ill defined grassy mound with small stones protruding.
Diam. 2.85m height 0.1m (84/1516)

208 - Clearance Cairn

Two clearance type cairns:

a) Poor condition - Fairly well defined grassy mound with small and medium stones protruding from turf.

Diam. 4.6m height 0.1m (84/1517)

b) Poor condition - Ill defined grassy mound with small, medium and one large stones protruding. Possible round cairn.

Length 5.3m width 3.1m height 0.0m (84/1518)

209 - Stone Bank

Poor condition - Ill defined spread of boulders protruding from turf. Possible lynchet ?

Length 0m width 2.5m height 0.1m (84/1530)

210 - Clearance Cairn

Poor condition - Ill defined grassy mound with small and one large stones protruding.

Diam. 3.5m height 0.1m (84/1511)

211 - Clearance Cairn

Poor condition - Ill defined grassy mound with small stones protruding.

Diam. 2.75m height 0.1m (84/1504)

212 - Clearance Cairn

Poor condition - Ill defined grassy mound with small stones protruding.

Diam. 2.4m height 0.1m (84/1503)

213 - Clearance Cairn

Poor condition - Ill defined grassy mound with small stones protruding.

Diam. 3.25m height 0.1m (84/1502)

214 - Clearance Cairn

Poor condition - Ill defined grassy mound with some small stones protruding.

Diam. 3.65m height 0.2m (84/1501)

215 - Clearance Cairn

Poor condition - Ill defined grassy mound with small stones protruding. Diam. 5.05m height 0.2m (84/1500)

216 - Clearance Cairn

Poor condition - Ill defined grassy mound with small stones protruding. Aligned E-W.

Length 4.7m width 3.7m height 0.1m (84/1505)

217 - Clearance Cairn

Poor condition - Ill defined grassy mound with small and medium stones protruding from turf.

Diam. 3.75m height 0.2m (84/1509)

218 - Clearance Cairn

Poor condition - Ill defined grassy mound with small stones protruding.

Diam. 3.05m height 0.1m (84/1510)

219 - Clearance Cairn

Poor condition - Ill defined grassy mound with small stones protruding.. Aligned NW-SE.

Length 4m width 3m height 0.1m (84/1506)

220 - Clearance Cairn

Poor condition - Ill defined scatter of small and large stones protruding from turf.

Diam. 2.9m height 0.1m (84/1507)

221 - Clearance Cairn

V Poor condition - Ill defined grassy mound with some small stones protruding.

Diam. 2.6m height 0.1m (84/1508)

222 - Stone Bank

Two sections of a short stone bank:

a) Elongated section of bank. Aligned NNW-SSE.

Length 4m width 1.8m height 0.0m (84/1597)

b) Elongated grassy mound with large boulders to NE, aligned NNW-SSE.

Length 3.7m width 2m height 0.2m (84/1596)

TYPE/PERIOD-GEN/PERIOD-SPEC/FORM=

Cairnfield/Unknown//;Hut/Prehistoric//;Stone Bank///

CLAUSURVEYNO.= **40-222**

ARCHHISTORY= Full survey/Lancaster University Archaeological Unit/1984

VISITS= Quartermaine, J & Leech, R. LUAU/4-1984; Quartermaine, J. LUAU/9-1992

1:10000PLAN= SD 18 NE

PRN 9129

9129 SITE NAME= **Lath Rigg**

LOCALAUTHORITY= **COPELAND** PARISH= **MILLOM WITHOUT**

NGR= **SD 179893** HEIGHTOD= **210-240m**

DESCRIPTION=

223 - Clearance Cairn

Fair condition - well defined grassy mound with a few small stones protruding from turf.

Diam. 4.6m height 0.5m (84/927)

224 - Hollow

Poor condition - large crater like depression in ground, small and medium stones protruding from turf around perimeter, about 1m deep.

Length 6.8m width 4.9m height 0.1m (84/926)

225 - Clearance Cairn

Poor condition - ill defined grassy mound with small stones protruding from turf. Large depression in centre, possibly plundered.

Length 4.3m width 2.4m height 0.1m (84/925)

226 - Clearance Cairn Poor condition - quite well defined ring of small and medium stones protruding from turf. Large depression in centre, c.3m dia,
Diam. 4.65m height 0.1m (84/924)

227 - Clearance Cairn

Poor condition - ill defined pear shaped grassy mound with small stones loose and protruding from turf. Widest at SW end.

Length 8m width 2.1m height 0.15m (84/928)

228 - Clearance Cairn

Poor condition - quite well defined grassy mound with a few small and medium stones protruding from turf.

Diam. 4.3m height 0.25m (84/929)

229 - Clearance Cairn

Poor condition - Very ill defined grassy mound with a few small stones protruding. Aligned E-W.

Length 3.7m width 2.4m height 0.2m (84/930)

230 - Wall

Poor condition - ill defined scatter of small and medium stones protruding from turf, possible wall.

Length 30m width 1.7m height 0.1m (84/923)

231 - Clearance Cairn

Poor condition - ill defined scatter of small and medium stones, loose and protruding from turf. Depression to S edge of mound.

Diam. 5m height 0.2m (84/922)

232 - Clearance Cairn

Poor condition - a scatter of small and medium stones, loose and protruding from turf. Slight depression in centre of mound. Aligned E-W.

Length 7.1m width 3.7m height 0.1m (84/921)

233 - Clearance Cairn

Fair condition - Extensively disturbed in the centre, one very large stone to NE. Several stones loose and protruding.

Diam. 4.55m height 0.1m (84/970)

234 - Clearance Cairn

Small, ill-defined clearance type cairn, moderately defined

Diam. 2.5m

235 - Clearance Cairn

Poor condition - quite well defined, small stones loose and protruding from turf.

Diam. 2.7m height 0.15m (84/969)

236 - Clearance Cairn

Poor condition - Very few stones protruding, very poorly defined. Aligned N-S.

Length 2.35m width 1.5m height 0.1m (84/968)

237 - Clearance Cairn

Poor condition - ill defined, flat patch of turf, few stones protruding. Aligned ENE-WSW.

Length 3.9m width 2.2m height 0.05m (84/946)

238 - Clearance Cairn

Poor condition - ill defined grassy mound, few stones protruding around edges.

Diam. 3.6m height 0.3m (84/945)

239 - Stone Bank

Two sections of an irregular stone bank:

a) an ill defined low grassy mound with very few small stones protruding, possibly a continuation of 923.

Length 15m width 1.2m height 0.05m (84/932) b) A very ill defined grassy mound with few small stones protruding. Possible continuation of 932.

Length 21m width 1.5m height 0.1m (84/933)

240 - Clearance Cairn

Poor condition - ill defined grassy mound with no stones protruding.

Diam. 2.05m height 0.1m (84/934)

241 - Clearance Cairn

Poor condition - ill defined grassy mound with a scatter of small stones protruding from turf.

Diam. 3.85m height 0.25m (84/935)

242 - Clearance Cairn

Poor condition - ill defined grassy mound with a few small stones protruding from turf.

Diam. 3.35m height 0.25m (84/936)

243 - Clearance Cairn

Poor condition - Extremely ill defined grassy mound with a few small stones protruding.

Diam. 4.15m height 0.2m (84/937)

244 - Clearance Cairn

Poor condition - ill defined scatter of small and medium stones protruding from turf.

Diam. 4.15m height 0.25m (84/938)

245 - Stone Bank

Two sections of an irregular, discontinuous stone bank;

a) An ill defined scatter of small and medium stones protruding from turf

Length 20.2m width 1.8m height 0.15m (84/941)

b) A moderately defined scatter of small stones protruding, possible continuation of a).

Length 19.4m width 1.3m height 0.1m (84/940)

246 - Clearance Cairn

Poor condition - ill defined grassy mound, few stones protruding.

Diam. 2m height 0.0m (84/942)

247 - Clearance Cairn

Two clearance type cairns:

a) an ill defined grassy mound, disturbed in centre.

Diam. 1.9m height 0.1m (84/943)

b) Poor condition - ill defined grassy mound.

Diam. 2.4m height 0.2m (84/944)

248 - Clearance Cairn

Poor condition - ill defined grassy mound with few stones protruding, cut by ditch/depression running N-S through middle.

Diam. 3.9m height 0.25m (84/947)

249 - Clearance Cairn

Poor condition - ill defined grassy mound with few stones protruding.

Diam. 2.85m height 0.3m (84/948)

250 - Clearance Cairn

Three adjacent clearance type cairns:

a) Poor condition - Few stones protruding, poorly defined.

Diam. 3.3m height 0.2m (84/965)

b) Poor condition - Very poorly defined, small and medium stones protruding from turf.

Diam. 2.4m height 0.2m (84/966)

c) Poor condition - Very poorly defined, very few stones protruding.

Diam. 3.65m height 0.2m (84/964)

251 - Clearance Cairn

Poor condition - Aligned N-S, very few stones protruding, poorly defined edges.

Length 4.4m width 3.4m height 0.4m (84/962)

252 - Clearance Cairn

Poor condition - ill defined grassy mound with several stones protruding.

Diam. 3.4m height 0.3m (84/949)

253 - Clearance Cairn

Sub-triangular shaped, ill-defined clearance type cairn.

Length 4.5m

254 - Clearance Cairn

Poor condition - ill defined grassy mound with few stones protruding, disturbed in centre.

Diam. 3.65m height 0.3m (84/951)

255 - Clearance Cairn

Poor condition - quite well defined edges, very few stones protruding.

Diam. 3.9m height 0.3m (84/952)

256 - Round Cairn

Poor condition - Heavily disturbed in centre, many loose stones protruding from turf.

Diam. 7.9m height 0.6m (84/963)

257 - Clearance Cairn

Fair condition - Many stones protruding from turf, quite well defined edges.

Diam. 5.7m height 0.5m (84/958)

258 - Clearance Cairn

Poor condition - Few stones protruding, poorly defined.

Diam. 3.2m height 0.2m (84/959)

259 - Clearance Cairn

Poor condition - Few stones protruding, very ill defined.

Diam. 3.2m height 0.2m (84/960)

260 - Clearance Cairn

Poor condition - Very few stones protruding, poorly defined.

Diam. 3.25m height 0.3m (84/961)

261 - Clearance Cairn

Poor condition - Several stones protruding from turf, poorly defined edges

Diam. 3.3m height 0.3m (84/957)

262 - Clearance Cairn

Poor condition - Several medium stones loose and protruding from turf.

Diam. 3.5m height 0.3m (84/967)

263 - Clearance Cairn

Poor condition - small and medium stones protruding, poorly defined edges, aligned NE-SW.

Length 4.2m width 2.9m height 0.2m (84/953)

264 - Clearance Cairn

Poor condition - Disturbance in middle, several stones protruding from turf.

Diam. 5.35m height 0.4m (84/954)

265 - Clearance Cairn

A small cairn with a disturbed centre, small stones loose and protruding from turf.

Diam. 3.35m height 0.2m (84/955)

267 - Clearance Cairn

Poor condition - Ill defined grassy mound. Aligned NNE-SSW.

Length 7.8m width 3.5m height 0.2m (84/1575)

268 - Clearance Cairn

Poor condition - Ill defined grassy mound

Diam. 1.8m height 0.2m (84/1576)

269 - Clearance Cairn

Two adjacent, small cairns:

a) Poor condition - ill defined mound, 2 stones protruding.

Diam. 2.15m height 0.1m (84/975)

b) Poor condition - ill defined mound, 3 stones protruding.

Diam. 2.55m height 0.2m (84/976)

270 - Clearance Cairns

Two clearance type cairns:

a) Fair condition - ill defined, 1 large earthfast boulder.

Diam. 2.7m height 0.25m (84/977)

b) Fair condition - grassy mound, 1 earthfast boulder.

Diam. 3m height 0.2m (84/979)

271 - Clearance Cairn

Fair condition - Round grassy mound, stones beneath turf.

Diam. 3.15m height 0.2m (84/978)

272 - Clearance Cairn

Poor condition - ill defined grassy mound with few stones protruding, slightly disturbed in centre. Aligned NE-SW.

Length 4.5m width 2.9m height 0.35m (84/980)

273 - Clearance Cairns

Two adjacent clearance type cairns:

a) Poor condition - ill defined, 4 stones protruding from turf, more below surface. Aligned NNE-SSW.

Length 5.1m width 3m height 0.2m (84/981)

b) Poor condition - ill defined, 1 stone protruding from turf.

Diam. 2.95m height 0.2m (84/982)

274 - Clearance Cairn

Poor condition - ill defined grassy mound with small stones protruding from turf.

Diam. 3.4m height 0.3m (84/1023)

275 - Clearance Cairn

Fair condition - Round mound, stones beneath turf.

Diam. 2.65m height 0.2m (84/973)

276 - Mound

Fair condition - Mound of irregular plan, largely grass covered with only a few stones visible.

Length 0m width 0m height 0.4m (84/972)

277 - Clearance Cairn

Poor condition - ill defined mound with a few stones protruding.

Diam. 3.3m height 0.2m (84/974)

278 - Long Cairn

Fair condition - well defined mound, depression in centre could indicate past disturbance, stones protruding from turf.

Length 9.5m width 5m height 0.4m (84/971)

279 - Clearance Cairn

Poor condition - ill defined grassy mound with some small stones protruding.

Diam. 2.75m height 0.1m (84/1030)

280 - Clearance Cairn

Poor condition - ill defined grassy mound with no stones protruding.

Diam. 5.3m height 0.4m (84/1031)

281 - Clearance Cairn

Poor condition - ill defined grassy mound with few small stones protruding. Aligned NW-SE.

Length 5.3m width 4.4m height 0.4m (84/1029)

282 - Clearance Cairn

Poor condition - ill defined grassy mound with some small stones protruding.

Diam. 4.25m height 0.2m (84/1028)

283 - Clearance Cairn

Poor condition - ill defined grassy mound with small stones protruding from turf.

Diam. 5m height 0.2m (84/1024)

284 - Clearance Cairn

Poor condition - ill defined grassy mound with many small stones protruding.

Diam. 2.4m height 0.0m (84/1027)

285 - Clearance Cairn

Poor condition - ill defined grassy mound.

Diam. 2m height 0.2m (84/1026)

286 - Clearance Cairn

Poor condition - ill defined grassy mound with small stones protruding.

Diam. 2.8m height 0.1m (84/1025)

287 - Clearance Cairn

Poor condition - Ill defined grassy mound with some small stones protruding.

Diam. 6.75m height 0.2m (84/1577)

288 - Clearance Cairn

Poor condition - Ill defined mound with a few small stones protruding.

Length 8m width 3.3m height 0.1m (84/1583)

289 - Clearance Cairn

Poor condition - Ill defined mound with a few small stones protruding.

Diam. 2.4m height 0.2m (84/1584)

290 - Clearance Cairn

Poor condition - Poorly defined, one medium stone protruding from turf.

Diam. 2.95m height 0.3m (84/994)

291 - Clearance Cairn

Poor condition - One large stone to SE, very poorly defined. Aligned NNW-SSE.

Length 3.7m width 1.9m height 0.3m (84/993)

292 - Clearance Cairn

Poor condition - ill defined grassy mound with 3 stones protruding.
Diam. 3.25m height 0.3m (84/992)

293 - Clearance Cairn

Poor condition - Few stones protruding, poorly defined.
Diam. 4.7m height 0.3m (84/987)

294 - Clearance Cairn

Poor condition - Some stones protruding from turf, quite well defined. Aligned NNW-ESE.
Length 6.9m width 3.4m height 0.1m (84/988)

295 - Clearance Cairn

Poor condition - Poorly defined, few stones protruding.
Diam. 3.35m height 0.3m (84/989)

296 - Clearance Cairn

Poor condition - grassy mound, no stone visible, poorly defined.
Diam. 3.45m height 0.2m (84/990)

297 - Clearance Cairn

Poor condition - Very ill defined with 4 stones protruding.
Diam. 2.85m height 0.2m (84/991)

298 - Clearance Cairn

Poor condition - small and medium stones protruding from turf, loose, poorly defined. Aligned ENE-WSW.
Length 6.3m width 2.5m height 0.1m (84/996)

299 - Clearance Cairn

Poor condition - Several medium stones protruding.
Diam. 2.6m height 0.3m (84/997)

300 - Clearance Cairn

Poor condition - One stones protruding, poorly defined.
Diam. 2.4m height 0.1m (84/998)

301 - Clearance Cairns

Two elongated clearance type cairns:

a) A poorly defined mound with stones scattered and protruding. Aligned E-w, could be a lynchet.

Length 8.1m width 3.8m height 0.2m (84/985)

b) Elongated, slightly prominent mound. Aligned N-S.

Length 8.6m width 2.9m height 0.2m (84/986)

302 - Clearance Cairn

Two adjacent cairns:

a) Poor condition - ill defined, stones protruding from grass and moss, latter partly defines cairn.

Diam. 2.7m height 0.1m (84/984)

b) Poor condition - ill defined, stones protruding from moss and grass.

Diam. 3.6m height 0.1m (84/983)

303 - Clearance Cairn

Poor condition - 3 stones protruding, ill defined.

Diam. 2.25m height 0.2m (84/995)

304 - Round Cairn

Poor condition - ill defined grassy mound with small stones protruding.

Length 7.4m width 6.1m height 0.4m (84/1022)

305 - Clearance Cairn

Poor condition - 2 stones defined.

Diam. 4.25m height 0.1m (84/1001)

306 - Clearance Cairn

Small circular mound of clearance stone with moderately defined edges.

Diam. 3.5m

307 - Clearance Cairn

Poor condition - ill defined grassy mound with a few small stones protruding from turf.

Diam. 2.6m height 0.2m (84/1021)

308 - Clearance Cairn

Poor condition - very few stones protruding.

Diam. 3.65m height 0.3m (84/1000)

309 - Clearance Cairn

Small, ill-defined clearance type cairn.

Diam. 2.5m height 0.1m (84/1003)

310 - Clearance Cairn

Small circular mound of clearance stone with moderately defined edges.

Diam. 4m (84/1004)

311 - Clearance Cairns

Two adjacent clearance type cairns:

a) Poor condition - ill defined grassy mound with a few small stones protruding from turf.

Diam. 2.6m height 0.2m (84/1005)

b) ill-defined, slightly prominent mound with medium stones protruding from turf.

Diam. 3.8m

312 - Clearance Cairn

Poor condition - Occasional stones protruding, ill defined.

Diam. 3.7m height 0.2m (84/1006)

313 - Clearance Cairn

Fair condition - On a slope, many stones loose and protruding.

Diam. 4.65m height 0.1m (84/999)

314 - Stone row

Poor condition - Row of five stones evenly spaced, N-S, largest stone .5 m high.
Length 4.3m width 0m height 0.0m (84/1008)

315 - Rectangular cairn

Poor condition - Roughly rectangular, line of stones crossing the centre at 1.6 m from SW end. Very few stones protruding.

Length 3.4m width 2.1m height 0.1m (84/1013)

316 - Clearance Cairn

Poor condition - Several stones protruding from turf, poorly defined.

Diam. 4.1m height 0.4m (84/1015)

317 - Clearance Cairn

Poor condition - One large stone in centre, very poorly defined.

Diam. 2.7m height 0.4m (84/1014)

318 - Clearance Cairn

Poor condition - Or possibly a lynchet, several stones protruding.

Length 7.5m width 2.5m height 0.05m (84/1016)

319 - Clearance Cairn

Poor condition - Several stones protruding and loose small and medium stones, on a slope.

Diam. 3.05m height 0.25m (84/1017)

320 - Clearance Cairn An ill-defined mound with few stones protruding. Aligned NE-SW.

Length 4.8m width 2m height 0.25m (84/1019)

321 - Clearance Cairn

Poor condition - several stones protruding from turf, poorly defined.

Diam. 2.1m height 0.15m (84/1020)

322 - Clearance Cairn

Poor condition - Few stones large and medium protruding from grassy mound.

Diam. 2.45m height 0.2m (84/1018)

323 - Clearance Cairn

Poor condition - ill defined stoney mound, large and medium stones protruding from turf.

Diam. 5.1m height 0.5m (84/1012)

324 - Clearance Cairns

Two adjacent clearance type cairns:

a) ill defined, few stones protruding, one large one quite high.

Diam. 4.35m height 0.3m (84/1011)

b) Several stones protruding from turf, quite well defined.

Diam. 5.65m height 0.4m (84/1009)

325 - Clearance Cairn

Poor condition - Several stones protruding. Poorly defined.
Diam. 5.2m height 0.3m (84/1010)

326 - Uncertain

Fair condition - Slight depression 1.4 m dia in centre, possible ring cairn.
Diam. 4.4m height 0.3m (84/1587)

327 - Hut circle

Fair condition - Fairly well defined circle of small and medium stones protruding from turf. See plan.

Length 0m width 0m height 0.5m (84/1838)

TYPE/PERIOD-GEN/PERIOD-SPEC/FORM=

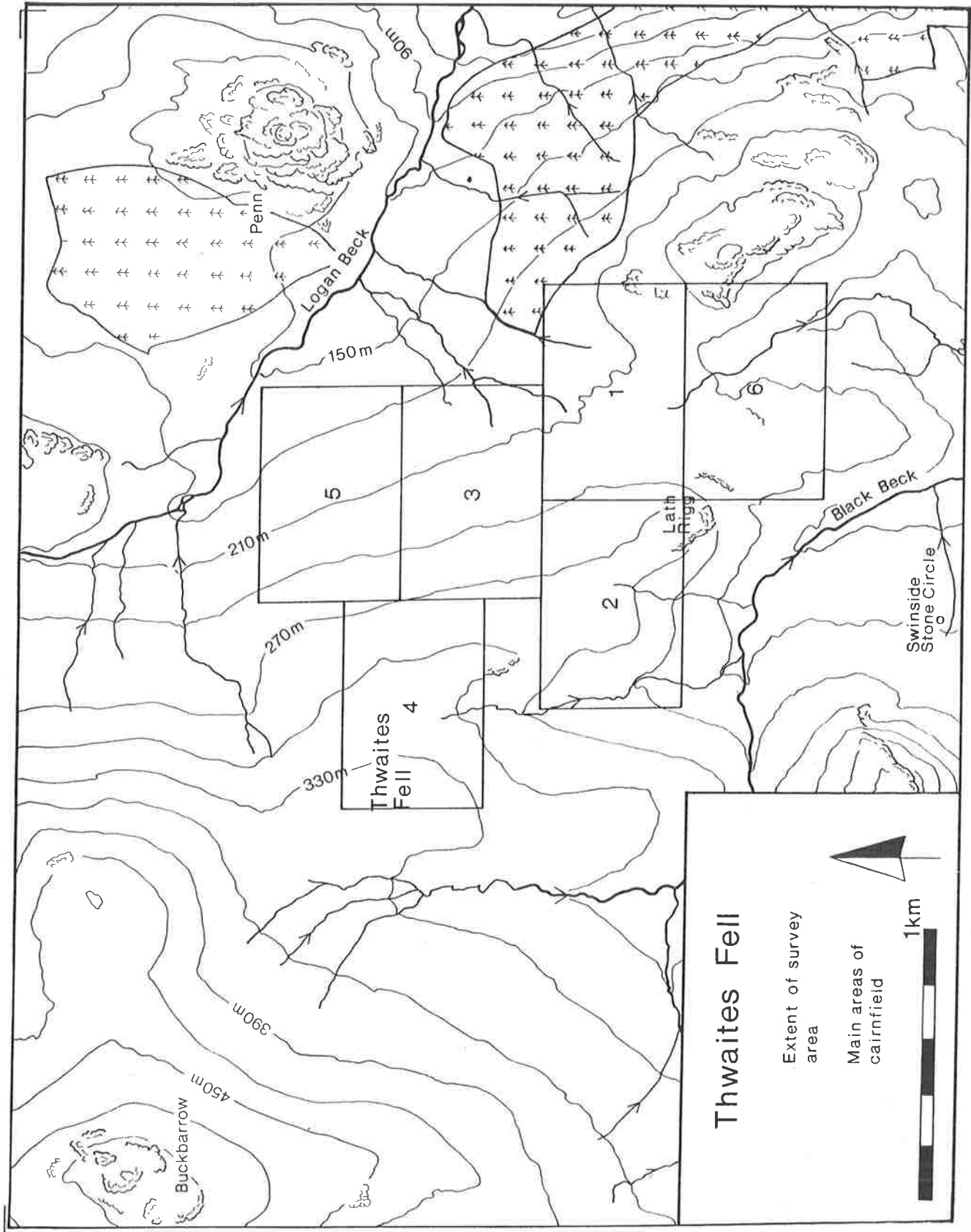
Cairnfield/Unknown//;Hut/Prehistoric//;Stone Bank//

CLAUSURVEYNO.= **223-327**

ARCHHISTORY= Full survey/Lancaster University Archaeological Unit/1984

VISITS= Quartermaine, J & Leech, R. LUAU/4-1984; Quartermaine, J. LUAU/9-1992

1:10000PLAN= SD 18 NE

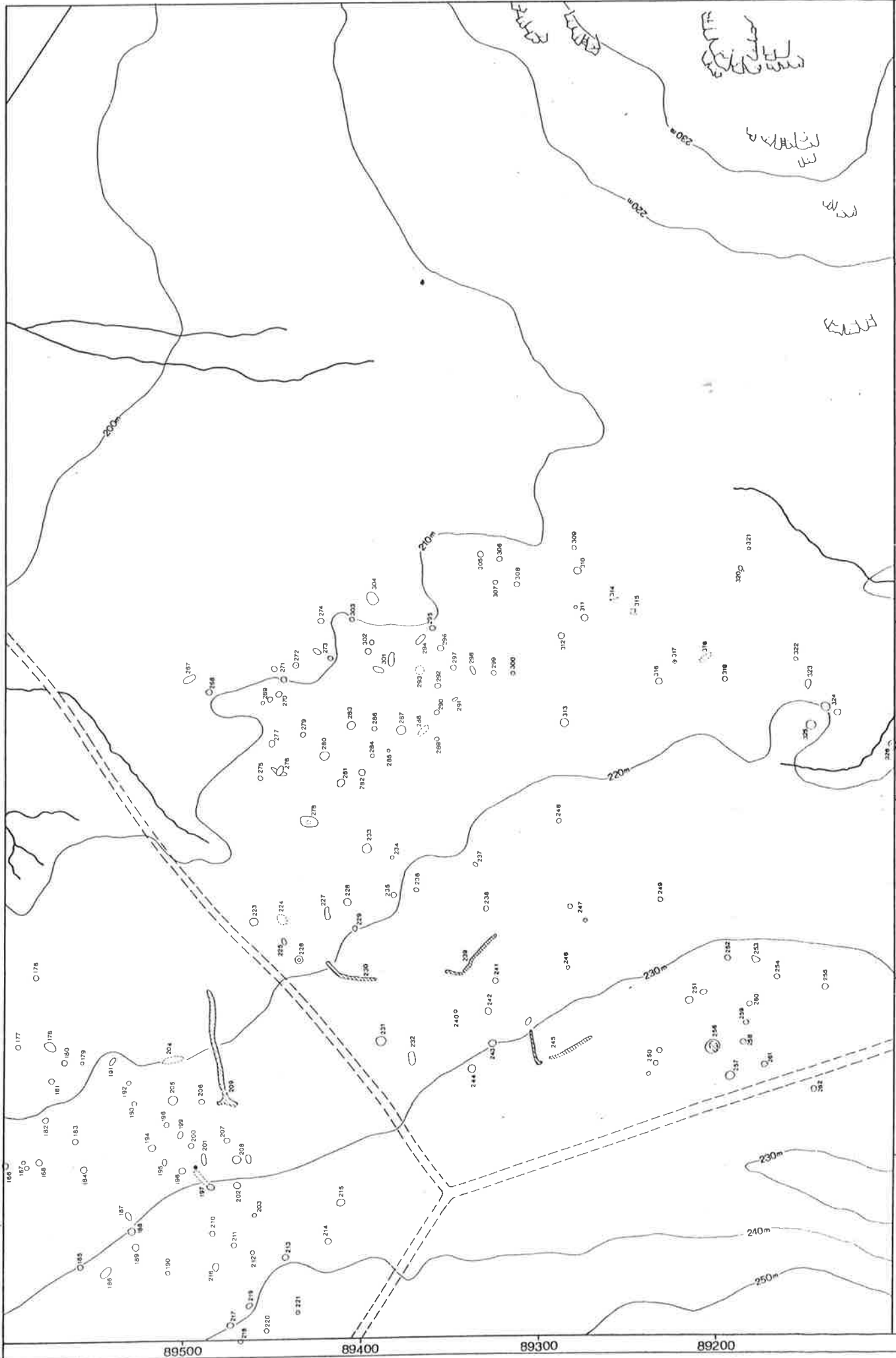


Thwaites Fell

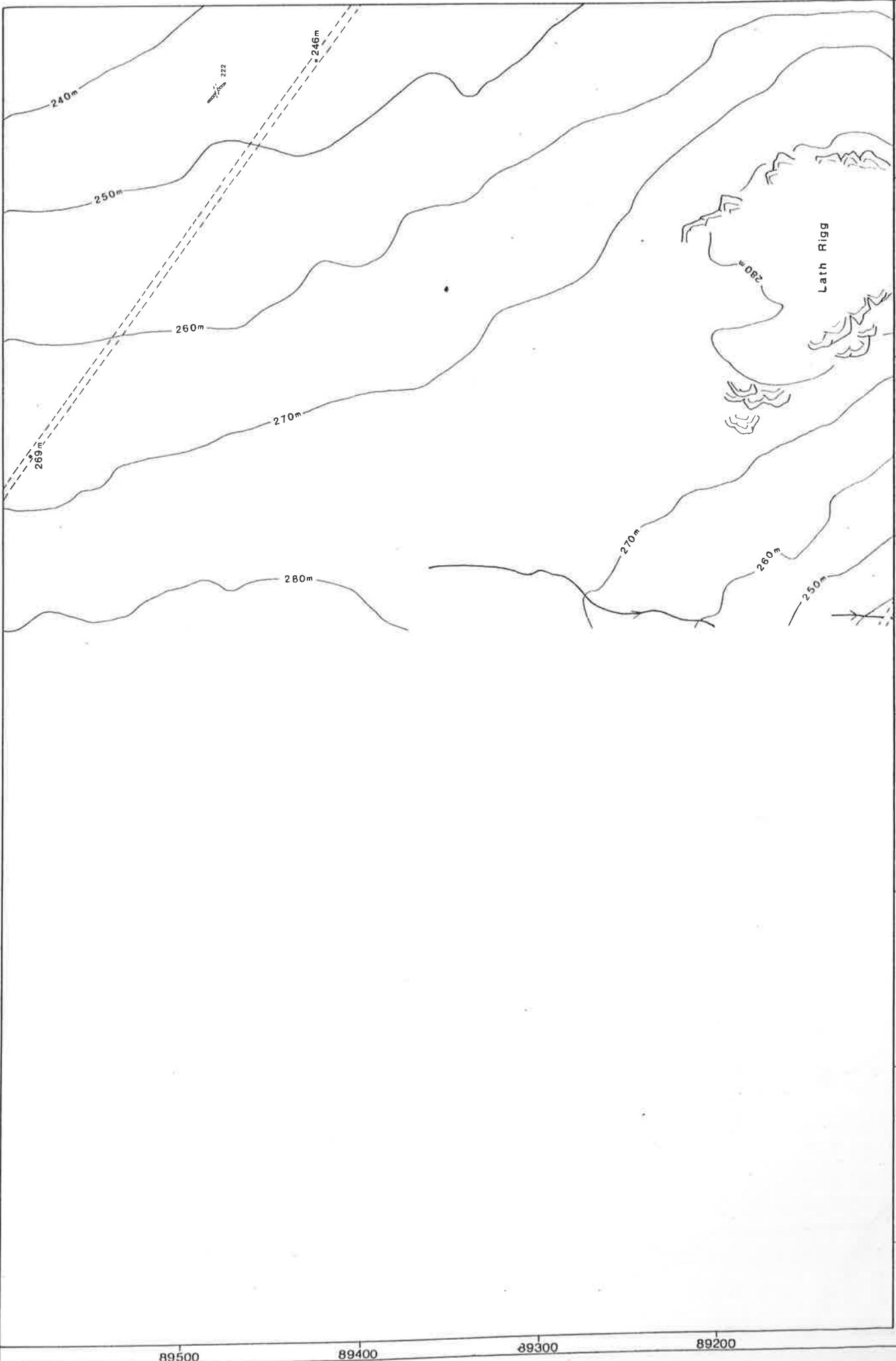
Extent of survey area

Main areas of cairnfield

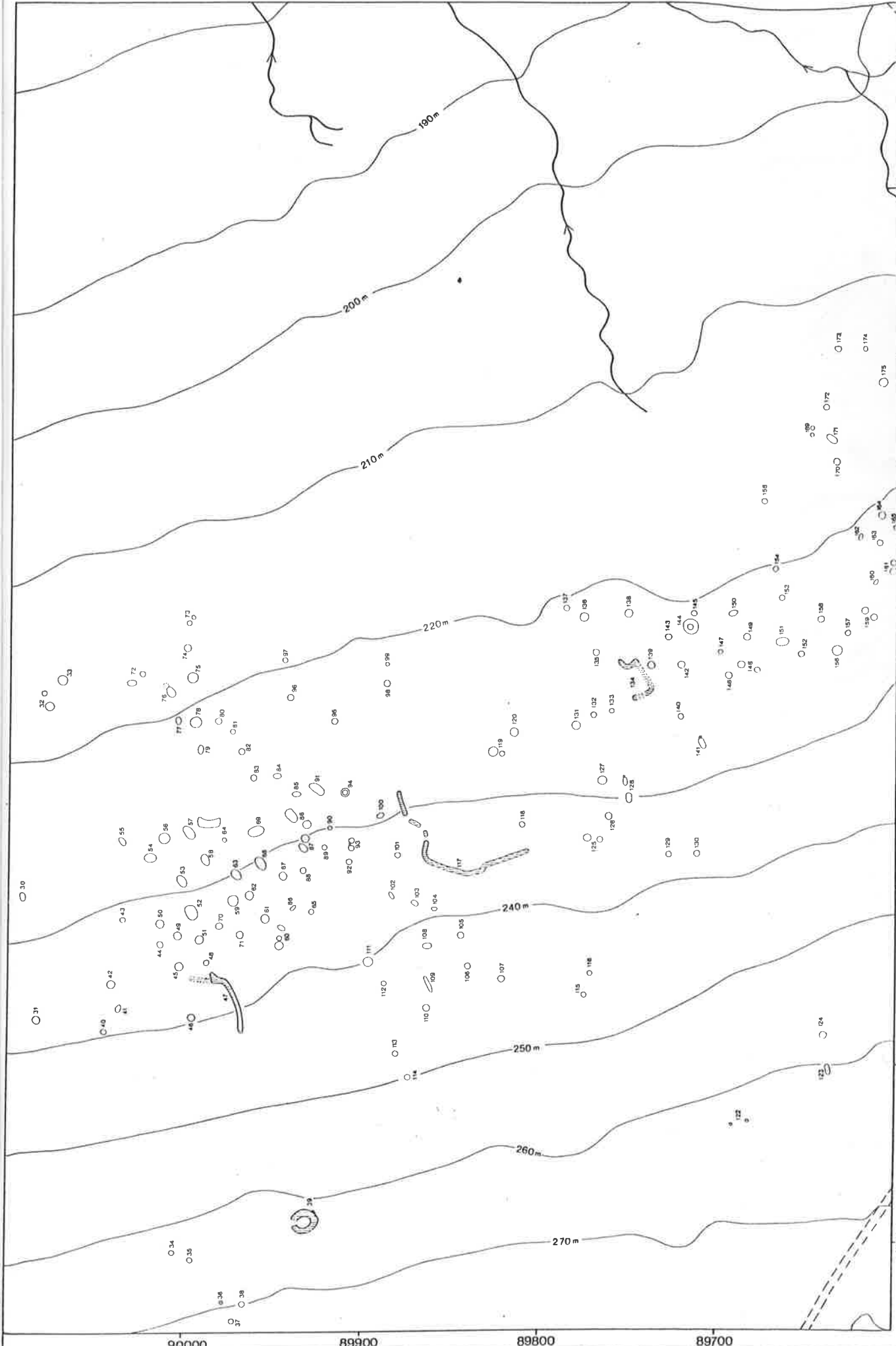




17700	17800	17900	18000	18100	18200	18300
LDNPS	THWAITES FELL 1984	Logan Beck	COMMENTS Topographical detail based upon the original field sketch and checked with the permission of the Controller of Her Majesty's Stationary Office, Crown copyright reserved.			
PLAN NAME		DRAWN BY				
Logan Beck		JQ				
		DATE				
		11-1990				
		SCALE				
		1:1000				
		SITE CODE				
		SHEET No.				
		1				
LANCASTER UNIVERSITY ARCHAEOLOGICAL UNIT						



LONPS THWAITES FELL	PLAN NAME Lath Rigg	COMMENTS Topographical detail based upon the 1978 Ordnance Survey map with the permission of the Controller of Her Majesty's Stationery Office. Crown copyright reserved.	17000	17100	17200	17300	17400	17500
			SCALE 1:1000	DRAWN BY JQ	SQ	SQ	SQ	SQ
			50m			DATE 5 - 1984		
			LANCASTER UNIVERSITY ARCHAEOLOGICAL UNIT			SHEET No. 2		



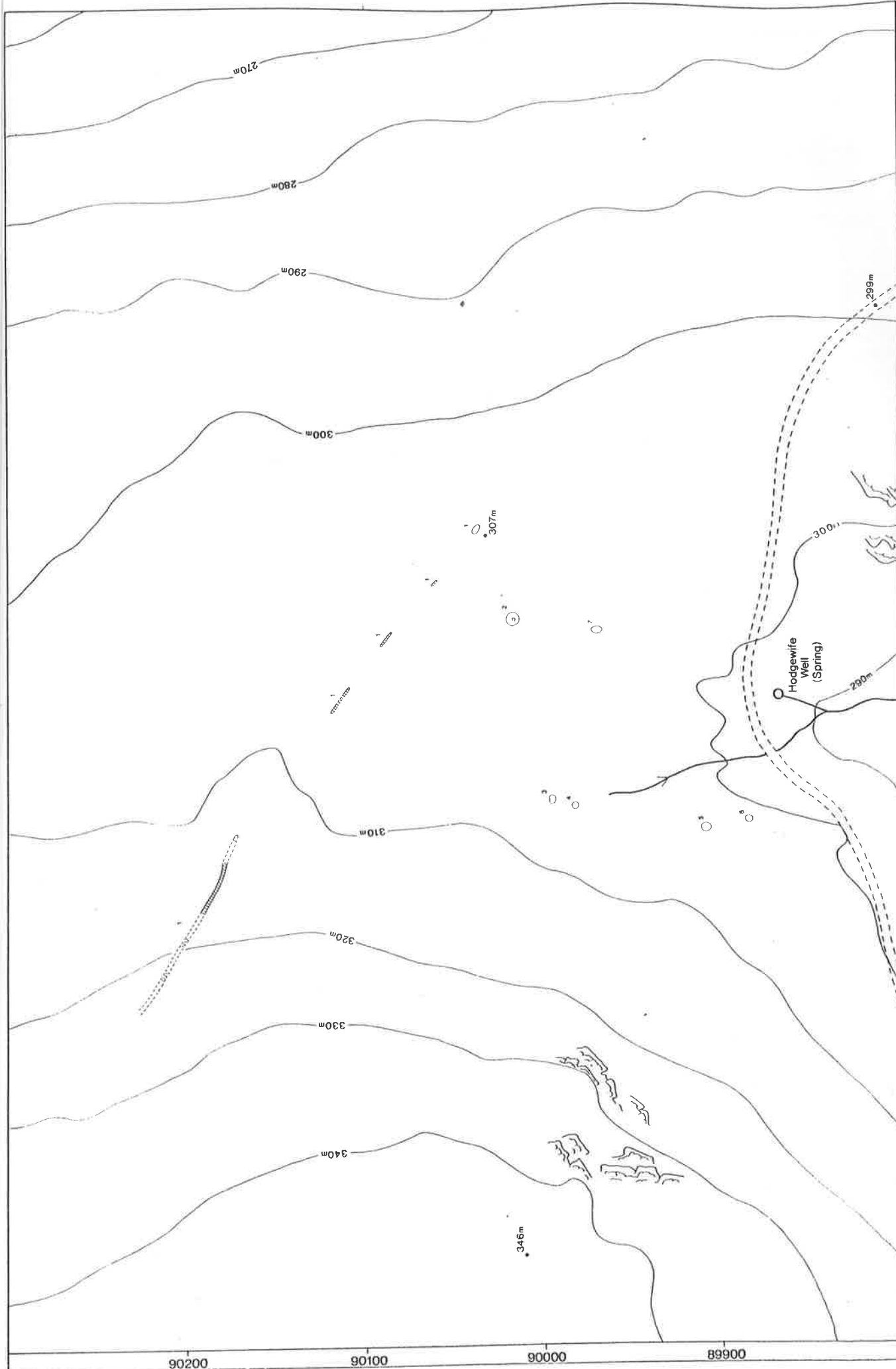
LDNPS THWAITES FELL	DRAWN BY JQ		SCALE 1:1000
	DATE 5 - 1984		SITE CODE
LANCASTER UNIVERSITY ARCHAEOLOGICAL UNIT			SHEET No. 3



COMMENTS
 Topographical detail based upon the 1975 Ordnance Survey 1:10,000 map with the permission of the Controller of Her Majesty's Stationary Office, Crown Copyright reserved.

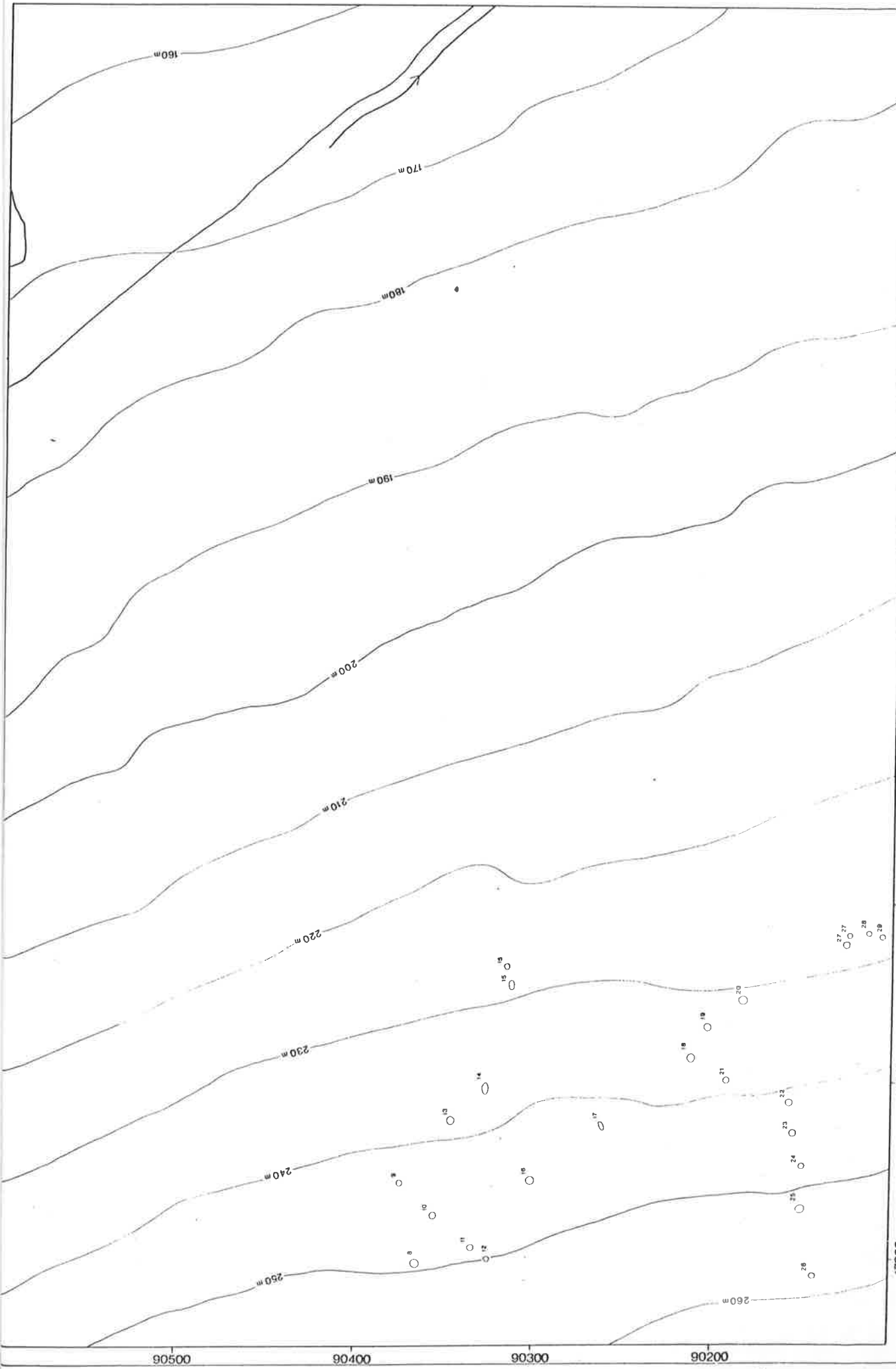


17300 17400 17500 17600 17700 17800 17900

90000 89900 89800 89700

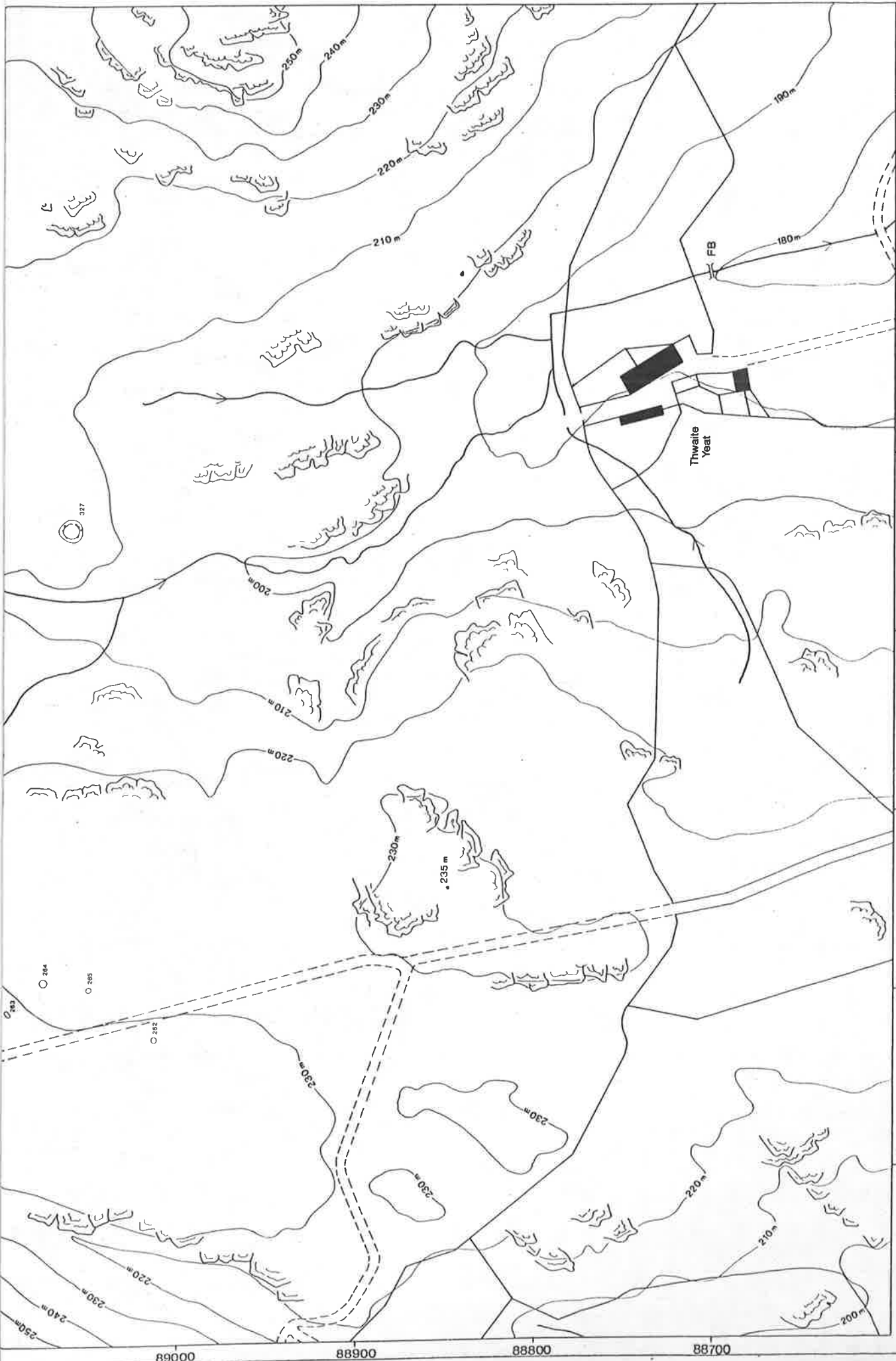


LDNPS THWAITES FELL	PLAN NAME Hodgewife Well	COMMENTS Topographical detail based upon the 1978 Ordnance Survey 1:50,000 map with the permission of the Controller of Her Majesty's Stationery Office. Crown copyright reserved.			DRAWN BY JQ RD DATE 6-1992	SCALE 1:1000 SITE CODE SHEET No. 4
			16600 16700 16800 16900 17000 17100 17200	90000 91000 92000		



90500 90400 90300 90200

LDNPS	17300	17400	17500	17600	17700	17800	17900
THWAIT	PLAN NAME						
	COMMENTS: Topographical detail based upon the 100m contour map of the area, with the permission of the Commander of Her Majesty's Stationery Office. Crown copyright reserved.						
					DRAWN BY JQ RD DATE 6-1992		
	LANCASTER UNIVERSITY ARCHAEOLOGICAL UNIT						
	SCALE 1:1000						SHEET No 5



LDNPS THWAITES FELL	PLAN NAME Thwaite Yeat	COMMENTS Topographical detail based upon the 1975 Ordnance Survey 1:10 000 map of the Thwaite Fell area, the copyright of Her Majesty's Stationery Office. Crown copyright reserved.	 	18300	18200	18100	18000	17900	17800	17700	
				SCALE 1:1000	RD	JQ	RD	18300	18200	18100	18000
			DATE	6-1992	DRAWN BY		JQ	JQ	RD		
			SHEET No.	6	LANCASTER UNIVERSITY ARCHAEOLOGICAL UNIT						