

**Mickleden Beck Survey Catalogue**

J.Quartermaine and P.Claris

Lancaster University  
Archaeology Unit  
Physics Building  
University of Lancaster  
Lancs.

National Trust  
Estates Advisory Office  
Spitalgate Lane  
Cirencester  
Glos.

î!

Mickleden Beck

lª@`ðhD

.PO4

8666 SITE NAME = MICKLEDEN WEST

LOCAL AUTHORITY = SOUTH LAKELAND PARISH = LAKES

NGR = NY 2621006930 HEIGHT OD = 170m

1:10000 PLAN = NY 20 NE

DESCRIPTION =

1 - ENCLOSURE - NY 2621006930

Dry-stone walling butts natural in situ large boulders, forming a double enclosure with a single external wall free-standing. There is a sheep entrance in the east side of the wall towards the east angle (size: 0.7m high , 0.5m wide). The stones are c.0.2m-0.3m across and are predominantly rounded with occasional angular frags.

Size: length 14m width 7m height c.1m

width of wall 0.6m

TYPE/PERIOD-GEN/PERIOD-SPEC/FORM = Sheep Fold///

CLAU SURVEY NO. = 250

VISITS = Claris P/10/8/1984

8667 SITE NAME = MICKLEDEN WEST

LOCAL AUTHORITY = SOUTH LAKELAND PARISH = LAKES

NGR = NY 263069 HEIGHT OD = 160m

1:10000 PLAN = NY 20 NE

DESCRIPTION =

2 - CAIRN - NY 2630006870

A mound of stones (size c.0.4-0.7m across). The east side has been robbed and the west side is against the natural ground slope.

Size: length 5m width 4m height 0.7m

3 - CAIRN - NY 263106860

A low mound of stones (size: c.0.2m-0.5m) protruding from turf. It is possibly natural detritus on a slight slope (about 8 degrees declination).

Size: length 3.2m width 3.2m height 0.7m

4 - STONE BANK ? - NY 2631706910

An approximate semicircular bank of stones running between south and north points of an arc on the west side of a Drumlin. About 10 large stones, up to c.1m across, are distributed throughout but the vast majority are small stones (c.0.1-0.2m across). In the north-west part there is some evidence of the scarp of a bank on the inner face of the semicircle.

Size: length c.20m width 3.4m height 0.7m

5 - STONE SETTING ? - NY 2632806909

A setting of single stones on turf. The shape is oval and has a slight gap at the south-east end. It appears to be modern as the stones sit on turf and there is dead grass beneath the stones.

Size: length 2.7m width 4m height 0.1m

6 - CAIRN - NY 2633906872

A prominent mound of medium to large stones. It has a turf covered perimeter with an exposed stone mound in the centre. It is partly disturbed.

Size: length 3.5m width 3.5m height 0.4m

7 - CAIRN - NY 2635206892

A small mound on the slope, comprising small stones protruding from the turf.

Size: length 2.7m width 2.7m height 0.3m .

8 - CAIRN - NY 2634306889

A semi-circular mound of earthfast small to medium stones piled against a very large, earthfast boulder.

Size: length 4.5m width 2.5m height 0.45m ô;T7

§

9 - CAIRN - NY 2632006856

This is an ill-defined pile of earthfast stones protruding from turf, set into a natural bank.

Size: length 3m width 3m height 0.2m

10 - CAIRN - NY 2630006875

A loose configuration of small to medium stones set in a natural bank. The edges are ill-defined and earthfast.

Size: length 3m width 3.3m height 0.15m

TYPE/PERIOD-GEN/PERIOD-SPEC/Form = Cairnfield/Prehistoric//

CLAU SURVEY NO. = 1-10

VISITS = Claris P/10/8/1984

8668 SITE NAME = MICKLEDEN WEST

LOCAL AUTHORITY = SOUTH LAKELAND PARISH = LAKES

NGR = NY 2648006815 HEIGHT OD = 140-155m

1:10000 PLAN = NY 20 NE

11 - STONE BANK - NY 2641506834 - 2653406789

A stone bank linking two streams which defines one side of an area of cleared pasture. It is unusually continuous and fairly regular in width, however its definition deteriorates towards its eastern end. There is a short near the centre of its length. It has no obvious relationship with any other stone banks or field systems.

Size: length c.128m width 2.0-3.0m height c.0.2m

12 - KERBED CAIRN? - NY 2648606836

About 20 stones make up a well-defined kerb to the cairn. There is a slight depression possibly indicative of disturbance to the south-east of the centre.

Size: length 4.0m width 3.0m height 0.2m

TYPE/PERIOD-GEN/PERIOD-SPEC/Form = Field System - Linear/Prehistoric//

CLAU SURVEY NO. = 11-12

VISITS = Quartermaine J/10/8/1984

8669 SITE NAME = MICKLEDEN WEST

LOCAL AUTHORITY = SOUTH LAKELAND PARISH = LAKES

NGR = NY 26650688 - 26960666 HEIGHT OD = 135m - 125m

1:10000 PLAN = NY 20 NE

CLAU SURVEY NO. = 13-57

DESCRIPTION =

13 - CAIRN - NY 2665606881

This is an elliptical cairn, which is grass covered around the perimeter but with stones exposed at the centre. There is also an ill-defined scatter of stones around the edge.

Size: length 4.2m width 3.2m height 0.2m

14 - CAIRN - NY 2667506823

A mound of stones, grassed over at the perimeter which shows signs of disturbance at the centre.

Size: length 6.0m width 6.0m height 0.5m

15 - CAIRN - NY 2668006804

This is a large and very prominent round cairn. It comprises small to medium stones which are mainly not earthfast, though the edges of the cairn do have some turf cover. The size and height of the cairn suggest a funerary function for this cairn.

Size: length 8.0m width 8.0m height 1.0m

16 - CAIRN - NY 2669606868

A long grassed mound with stones protruding from the turf. The mound is orientated north-east/south-west and is slightly pointed at the south-west end. It has an irregular shape. 0;T7

§ Size: length 12m width 4.8m height 0.2m

17 - CAIRN - NY 2670306741

This is a mound of medium stones that has been eroded on its south and west sides by a small beck and the Mickleden Beck. It is fairly well defined to the north.

Size: length 3.8m width 2.5m height 0.3m

18 - STONE BANK - NY 2671606805-2671606783

A stone bank with the long alignment north/south and the short alignment west/east. There is an area of stone scatter to the south of the stone bank, and a further area of stone scatter on the corner. The stone bank tapers slightly to the east.

Size: length 21m width 1.7m height 0.1m - 0.2m

19 - STONE BANK - NY 2671706823-2677406785

This is a stone bank which has three distinct alignments, that is north-west/south-east, west/east and north-west/south-east. A modern track crosses the west/east alignment and at this point has flattened the stone bank from 0.3m down to 0.1m high. The width of the stone bank increases as it progresses up the valley. There is a slight gap between this and the stone bank 25.

Size: length c.72m width 1.2m - 3.8m height 0.1m - 0.5m

20 - CAIRN - NY 2673206782

A substantial mound which is stone capped and has grass covered edges. There is a small scatter of stones on the south side which may be a related feature. It has a basic 'pear' shape, is quite prominent.

Size: length 14m width 5.3m - 2.8m height 0.8m - 1.0m

21 - STONE BANK - NY 2673006801

This is a linear spread of stones partially eroded by the modern valley path. There is a possible connection between this and a stub of stone bank which emerges from the stone bank 265.

Size: length c.9m width ave.1.2m

22 - CAIRN - NY 2674006747

A grassed circular mound which has exposed stones near the centre. It is a fairly well-defined cairn with a regular shape.

Size: length 4.8m width 4.8m height 0.3m

23 - CAIRN - NY 2674906778

This is an irregular, approximately circular concentration of stones. It is immediately adjacent to the main valley path and as a consequence has been exposed to extreme erosion. It comprises small to medium field stones.

Size: length 2.2m width 2.2m height 0.1m

24 - STONE BANK - NY 2675506780 - 2675006756

A stone bank a) with a cairn b) associated with the terminus of the bank:

a) The stone bank is initially aligned south-west/north-east then turns at right angles so that it becomes aligned south-east/north-west. The stone bank is poorly defined along the south-west/north-east section where it is crossed by the modern valley footpath.

Size: length 20m width 2.5m-3.5m height c.0.25m high.

b) The cairn comprises medium stones protruding from turf. It is a fairly well-defined, low mound. There is a very dubious line of stones connecting this cairn with the stone bank (a).

Size: length 4m width 3m height 0.1m

25 - STONE BANK - NY 2681106836 - 2674206722

The end of this stone bank is near the river, but there is no sign of the stone bank in the exposed section of the river bank. The main valley path crosses the stone bank and has severely eroded it; much of the stone fabric is exposed. The north gap has a width of 2.2m but it may have been enlarged recently because there is evidence of wheel ruts. Near the northern end of the stone bank it is crossed by a beck and at this far end of the stone bank there are very slight indications of a return towards the west, but this peters out with no clear end.

Size: length 133m width 2.5m - 4.3m height 0.2m - 0.4m

26 - CAIRN & STONE BANK - NY 2678906769 - 267800673

This is a sub rectangular mound of stones and bracken protruding from the turf, with a generally ill-defined scatter of stones adjacent on the eastern side. The stone bank starts from the northern corner of the mound and projects in a north-easterly direction. This section is crossed by the main valley path and is extensively eroded by both the vehicular and pedestrian traffic. The stone bank then diverts around the base of a drumlin and continues in a northerly orientation.

Size: length 38m width 2.0m height 0.4m-0.1m

27 - STONE BANK - NY 2679406744 - 2682406709

This stone bank is in places poorly defined and it only became visible as an integral feature in mid 1986 when the erosion had become so severe that much of the stone fabric was exposed. The stone bank emerges from a large clearance type cairn and then continues around the south-western edge of a drumlin. There is a gap at NY 2681506723 and also at NY 26794 06747 where it does not quite connect with the dog leg of stone bank 26. There is a very small, very ill-defined length of stone bank just visible as a result of the erosion, which seems to connect stone bank 27 with stone bank 37.

Size: length 44m width 2m - 1.3m height 0.15m

8 - CAIRN - NY 2677006705

This cairn comprises medium stones protruding from the turf. The edges are ill-defined and the shape is irregular.

Size: length 4.0m width 3.8m height 0.3m

29 - CAIRN - NY 2677706720

A generally well-defined and fairly prominent cairn with a fairly regular shape. It comprises small to medium stones protruding from the turf.

Size: length 6m width 6m height 0.5m

30 - CAIRN - NY 2677906717

This is a very irregular shaped cairn with turf and bracken cover. It has medium stones protruding from the turf.

Size: length 3m width c.3m height 0.3m

31 - CAIRN - NY 2678106693

A low turf covered mound with a few small and medium field stones protruding. It has poorly defined edges

and a slightly irregular shape.

Size: length 2.6m width 2.6 height 0.1m

32 - CAIRN - NY 2678406699

A low, turf covered mound with a few small and medium field stones protruding from the turf. It has a slightly elliptical shape. The edges are poorly defined.

Size: length 2.4m width 2.0m height 0.1m

33 - CAIRN - NY 2678706703

This is a very low, irregularly shaped, turf-covered mound with stones protruding from the turf. It is very ill-defined.

Size: length 2m width 2m height 0.1m

34 - CAIRN ? - NY 2679106707

An irregular, low spread of turf with abundant stones protruding. It has an irregular though elongated shape and is very ill-defined.

Size: length 4m width 3m height 0.1m

35 - CAIRN - NY 2678906724

This is a turf covered mound with small and medium stones protruding from the turf. It is ill-defined to the north and is slightly elongated.

Size: length 3.9m width 3.2m height 0.3m

36 - CAIRN - NY 2680706683

Š A fairly regular shaped, turf covered mound with a few stones protruding. It is fairly prominent and the edges are moderately defined.

Size: length 4.6m width 4.0m height 0.3m

37 - STONE BANK - NY 2679406735 - 2680506692

This is a section of stone bank in three sections (a-c).

a) This section of the bank runs approximately north-west/south-east. The stone alignment is irregular and the stone bank is eroded where it is crossed by a footpath. It has a dog-leg half way along its length which is precisely in line with cairns 31-34.

Size: length 27m width 1.5 - 1.4m height 0.1m

b) This is a long cairn that is aligned with sections a) and c). The cairn continues from the south-south-east end of the stone bank.

Size: length 6m width 2.9m height 0.4m

c) This short section of stone bank extends from section b). It is orientated with stone bank 38, but does not visibly join.

Size: length 11m width 1m height 0.2m

38 - STONE BANK - NY 2680906691-2682406676

A low line of stones protruding from the turf indicative of a stone bank. It is aligned north-west/south-east. It continues in the same general alignment as bank 37 and appears to join with the cairn/stone bank 39. It is ill-defined and consequently it has been drawn with dashed lines.

Size: length 21m width 1.5m height 0.2m

39 - CAIRN/STONE BANK - NY 2682406672

A low, grassed mound with a few stones and large boulders protruding. It forms a midpoint between stone banks 38 and 40.

Size: length 12m width c.3.5m height 0.2-0.4m

40 - STONE BANK - NY 2683406669-2685106663

A long line of stones protruding from the grass. It joins the side of site 39 and is orientated

east-south-east/west-north-west It is a possible continuation of stone bank 38. The total length of stone banks 38, 40 & 39 is approximately 56m.

Size: length 18m width 1.5m height 0.2m

41 - STONE BANK - NY 2685206657-2690406647

This stretch of stone bank is in two parts:

A) A low line of stones that has a cairn at its south-eastern end. This stone bank is aligned west-north-west/east-south-east

Size: length 10m width c.1.2m height 0.1-0.2m

B) This is a continuation of part A) and comprises a long line of stones protruding from the grass mound. The mound is slightly broader and higher in the centre than at the ends. The total length of 41 is approximately 56m.

Size: length c.42m width 2.4m - 1.5m height .2m

42 - CAIRN - NY 2682706713

A long, oval cairn comprising a mound of stones with frequent large stones up to a maximum of 0.7m across. There is a low, ill-defined and relatively eroded stone bank extending from the cairn in the direction of stone bank 27.

Size: length 7m width 3.8m height 0.6m

43 - CAIRN - NY 2681206712

This is a grassy mound in poor condition with stones protruding. It is subject to erosion as a result of the main valley bottom path.

Size: length 2.8m width 2.8m height 0.3m

44 - CAIRN - NY 2684806701 This mound is more substantial than others in the area and comprises exposed medium stones fringed by grassed bank. The exposed centre of the mound shows signs of disturbance. It has a sub-quadrilateral shape, but it may originally have been round because the present shape may be, to some extent, the result of material spilling out in recent times. ô;T7

Š Size: length 9m width 6m height 0.55m

45 - CAIRN - NY 2682906687

A long, low grassy mound in poor condition from which stones protrude. It is roughly in line with the stone bank 47.

Size: length 5m width 2.3m height 0.2m

46 - CAIRN - NY 2687206670

A long, low oval cairn eroded at the western end by a modern path. The cairn constitutes a shallow spread of stones in a slight grassy mound.

Size: length 10m width c.3.8m height 0.2m

47 - STONE BANK ? & CAIRN - NY 2683506680

A possible stone bank comprising a linear arrangement of stones set in the grass.

Size: length 14m width 1.1m height 0.1m

On the northern end of this stone bank there is a small round cairn. It is a low grassy mound in poor condition from which stones protrude.

Size: length 1.9m width 1.8m height 0.1-0.2m

48 - ENCLOSURE - NY 26850682

A small, slightly irregular enclosure, comprising dry-stone walls which stand up to four courses high. It has a small, well-defined entrance to the south. The northern wall is built around a very large natural boulder and it is earth retaining for much of its length. It is in an area of undulating, morainal terrain.

Size: length 11m width c.7m

49 - CAIRN - NY 2690506745

A small, slightly ill-defined cairn, with medium to large stones protruding from turf cover. It is in an area of morainal stony spread and there is some confusion with the natural.

Size: 3.8m width 3m

50 - CAIRN - NY 2690706738

A mound surrounded by bracken with an exposure of stones of various sizes from 0.1m to 0.4m across.

Size: length 4.3m width 4.3m height 0.2m

51 - CAIRN - NY 2692006682

Low grassy mound with small and medium stones protruding from the turf. It is slightly elongated and very ill-defined.

Size: length 4.9m width 3.5m height 0.2m

52 - CAIRN - NY 2692906666

A low, long cairn comprising a grassed bank from which small and medium stones protrude from the turf. It is very ill-defined.

Size: length 4.2m width 2.9m height 0.2m

53 - CAIRN - NY 2692806695

An approximately circular cairn with large and medium field stones protruding from a grassed bank. It is quite prominent and it is very much better defined than any other cairn in this group.

Size: length 5.2m width 5.2m height 0.4m

54 - CAIRN - NY 2693606674

These are two adjacent curved cairns which are potentially related:

Western cairn: It is low lying with medium and large stones protruding from the turf. It is very poorly defined.

Size: length 4.8m width 2.5m height 0.2m

Eastern cairn: It is low lying with stones protruding from a grassed mound.

Size: length 4.9m width 3.1m height 0.3m

55 - CAIRN - NY 2695206672

§ An approximately circular cairn with stones protruding from the grass and displaying a low concentration of stones in the centre.

Size: length 5.2m width 5.2m height 0.4m

56 - STONE BANK - NY 2694006655

An extremely low curvilinear exposure of stones protruding from grass, which is probably a short section of stone bank.

Size: length 13m width c.1.5m height 0.1m

57 - CAIRN - NY 2695106661

This long cairn comprises stones exposed along the edge of a natural bank.

Size: length 3.8m width 3.4m height 0.4m

#### Sub-group A

Component sites: 26-42

Cairns 31-36 and the dog-leg of bank 285 are aligned. The cairn alignment line is parallel with the stone bank 25 and was possibly a result of stone clearance along the line of a former boundary.

Stone banks 37-41 are all approximately in line, and would seem to comprise a single boundary line. But this field boundary is very discontinuous and irregular in terms of its present day condition, in some



places it is very distinct and in others hardly discernible hence it does not appear to be a consistently constructed boundary marker. It was possibly a result of stone clearance along the line of a former boundary.

TYPE/PERIOD-GEN/PERIOD-SPEC/FORM = Cairnfield/Prehistoric//;Field system - linear/Prehistoric//  
VISITS = Claris P & Quartermaine J/10 & 11/7/1984  
1:10000 PLAN = NY 20 NE  
CLAU SURVEY NO. = 13-57

8670 SITE NAME = MICKLEDEN BECK  
LOCAL AUTHORITY = SOUTH LAKELAND PARISH = LAKES  
NGR = NY 271064 HEIGHT OD = 120m  
CLAU SURVEY NO. = 58-109  
DESCRIPTION =

PRN 8670

58 - CAIRN - NY 2708506570

This is a grass covered possible cairn from which stones protrude. There are bracken covered morainic slopes adjacent as also are frequent brash deposits. The cairn is of an approximate circular shape, suggesting an artificial construction; however the cairn may be part of the natural morainic debris. Field walking of this area was impeded by dense bracken cover.

Size: length 2.5m width 2.5m height 0.2m

59 - CAIRN ? - NY 2711006540

A large mound of exposed stones which are possibly part of a natural morainic deposit which covers this area. The stones are of varying sizes (approximately between 0.1m to 0.5m across). The long axis is orientated north east.

Size: length 4.0m width 2.5m height 0.4m

60 - CAIRN - NY 2711506506

A small approximately circular area of exposed stones (ave. size 0.2m) The cairn lies on boggy ground. Most of the stones are level with the ground but lower stones can be seen below ground level suggesting that subsidence has occurred.

Size: length 1.8m width 1.8m height 0.1m

61 - CAIRNS? - NY 2715706520

These are two adjacent stony mounds which are possibly linked.

Western mound: It is well-defined and fairly prominent, comprising mainly large blocks. It has an approximately circular shape.

Size: length c.2m width c.2m

§ Eastern mound: This is similarly well-defined and prominent, but comprises medium and large stones and one large in situ natural boulder.

Size: length c.2.5m width 2.5m

These mounds are associated with morainic natural stone spreads, however they have definite, sharp edges and are possibly artificial in origin.

62 - WALL? - NY 2715306504

A very short stub of masonry attached to a very large boulder. It does not have sufficient masonry to have been more than a few courses high. It was possibly a small field.

Size: length c.3m width c.0.8m

63 - CAIRN/STONE BANK - NY 2705606483 - 2704806468

from A Poor and ill-defined long, low mound comprising medium to large stones (0.2m-0.4m across) protruding the turf. The maximum width of the cairn/stone bank is 3.2m, narrowing slightly towards the south-west end.

The scatter of stones continues to the west and this therefore may represent the edge of the cleared land.  
Size: length 11m width 3m height 0.2m-0.3m

64 - CAIRN - NY 2705606465

A closely cropped turf covered mound with frequent small and medium stones exposed. The cairn is irregularly rounded with a small hollow in the centre possibly a result of disturbance. On the south-west side of the cairn is a scatter of stones continuing down the bank which may have been a part of the cairn.  
Size: length 5.4m width 5.4m height 0.5m

65 - STONE BANK - NY 2706306481-2712106434

a continuous length of stone bank aligned north-west/south-east. It comprises a very low, turf covered bank of negligible height from which stones protrude. The stone bank is slightly curved in the centre; Stone bank 71 butts on at right angles. There is a pear shaped cairn (80) at the south-easter terminus of the bank.  
Size: length 75m width c.1.4m height 0.1m

66 - CAIRN - NY 2707906461

This is a 'Pear' Shaped long cairn orientated south-west. The perimeter is mostly turf covered with the centre comprising frequent small and medium exposed stones. The centre of the mound is hollow (possibly disturbed) in parts. The exposed stones form an approximate circle in the middle of which is an undisturbed grassed band of stones. In profile the cairn is irregularly rounded. As it is a well-defined, prominent cairn, there is a slight possibility that it was a funerary cairn.  
Size: length 8.2m width c.6.9m height 0.6m

67 - CAIRN - NY 2708306446

A turf covered mound with stones protruding. The stones average 0.2 to 0.3m across with occasional larger stones. In profile the cairn is irregularly rounded.  
Size: length 4.3m width 4.3m height 0.5m

68 - CAIRN - NY 2709206495

A long, turf covered mound with stones protruding in parts and with an exposed concentration of stones in the south-east half. The cairn is roughly 'pear' shaped and is orientated towards the south east. The north east side of the cairn is disturbed and partly obscured by spoil from the recent (1983/4) drainage ditch that passes beside it.  
Size: length 7.5m width c.4.0m height 0.4m

69 - CAIRN ? - NY 2708206418

An approximately circular spread of stones protruding from a grass covered mound. It has the same characteristics as stone bank 70, it is on the same orientation and it is separated from the stone bank by a gap of only c.5m wide, so it is possible that this was a continuation of the stone bank.  
Size: length 3.5m width 3.5m

70 - STONE BANK - NY 2709506451-3708406423

A grass covered, bank with stones protruding from the turf. It is truncated at approximately mid-point by wheel ruts. It is aligned south-west/north-east and is orientated perpendicular to stone bank 65. There is a gap of 4m between the end of this feature and the stone bank 65, it then continues (as stone bank 71) for a further 28m.  
Size: length 29m width 3.6m-3.8m height 0.3m

71 - STONE BANK - NY 2711506480-2709706457

This stone bank is an extension of stone bank 70. It is aligned south-west/north-east and butts stone bank 65 at right angles. It is truncated near its south-west end by the modern valley path. It comprises a low, grass covered bank with small stones protruding from the turf.  
Size: length 28m width 2.0m height 0.4m

72 - CAIRN - NY 2710606498

This cairn is in poor condition having been disturbed or robbed. Its perimeter is mostly turf covered with stones protruding. The centre accounts for 80% of the total feature area and displays exposed stones hollowed towards the centre. The stones are small, medium and large (up to 0.4m across)

Size: length 4.7m width 4.7m height 0.7m

73 - CAIRN - NY 2709606419

A turf covered mound with medium-sized stones protruding from the turf. Its edges are reasonably defined, and it has a fairly regular shape. There is no obvious connection with site 74.

Size: length 3.8m width 3.8m height 0.3m

74 - CAIRN - NY 2709706412

A turf covered mound with stones protruding, some of which are large (average 0.3m across). The mound has an irregular surface.

Size: length 6.0m width 6.0m height 0.3m

75 - CAIRN - NY 2710406438

A poorly defined, low turf mound with small to large stones protruding from the turf. It has an irregular shape. It is orientated towards site 73.

Size: length 4.6m width 3.3m height 0.2m

76 - CAIRN - NY 2710206399

A low, grass covered mound from which small stones protrude. It has a fairly regular shape and the edges are reasonably defined.

Size: length 4.5m width 3.1m height 0.2m

77 - CAIRN - NY 2711906410

This is quite a large cairn, which is generally ill-defined but worst on the east side. There is a slight depression in the north-west sector and there is a modern path marker cairn on top.

Size: length 5.5m width 5m height 0.2m

78 - CAIRN - NY 2711806410

This is an irregularly shaped round cairn with a small extension leading from the south side of the cairn. The cairn is turf covered with small and medium stones protruding from the turf.

Size: length 6.7m width 6.7m height 0.3m

79 - CAIRN - NY 2711806425

A round cairn with little vegetation cover which has evidence of recent burning. The edges are well-defined with a slight ridge (possibly a kerb) around the edge. The central area contains irregularly sized stones. There are indications of disturbance in the centre of the cairn.

Size: length 5.4m width 5.4m height 0.1m high.

80 - CAIRN - NY 2712306433

An oval shaped long cairn at the east end of stone bank 65. The cairn comprises a grass covered mound with a slightly hollowed centre possibly indicating robbing. Considerable lumps and hollows exist on the surface and these may also indicate disturbance. Individual stones protrude from the grass surface.

Size: length 7.8m width 5.8m height 0.35m

81 - CAIRN - NY 2713606468

A very poor and ill-defined, irregularly shaped, turf covered mound with stones protruding. A hollow on the south-west side may be a result of disturbance.

Size: length 2.2m width 2.2m height 0.4m

ô;T7  
S

82 - STONE BANK ? - NY 2713306464

A low 'L' shaped, grass covered mound from which stones protrude. Other stones are found protruding from the area within the angle of the "L". There is an ill-defined, linear spread of stones continuing south for about 5m which is probably a part of this stone bank.

Size: length 23m width 1.0m height 0.2m

83 - CAIRN ? - NY 2714706477

A poor and ill-defined, irregular grass covered mound from which stones protrude. It is possibly a natural feature.

Size: length 4.5m width 4.5m height 0.4m

84 - CAIRN - NY 2713306401

A low mound with an irregularly defined edge and containing small stones protruding from the turf.

Size: length 5.0m width 5.0m height 0.1m

85 - CAIRN - NY 2715406462

A mound of exposed stones partly turf covered at the perimeters. It is situated on the edge of a slight natural bank and the uphill eastern edge is continuous with the ground slope.

Size: length 3.5m width 3.5m height 0.4m

86 - CAIRN/STONE BANK? - NY 2714406426

A very low mound with stones protruding from the grass cover. It is possibly an eroded stone bank with the base probably undisturbed at ground level. It is orientated north/south.

Size: length 7m width 0.7m height 0.1m

87 - CAIRN/STONE BANK ? - NY 2714806421

A low, poorly defined mound with irregular stones protruding from the turf. There is an oval depression at the western end of the feature which is possibly a result of disturbance.

Size: length 9.5m width 2.7m height 0.1m

88 - CAIRN/STONE BANK? - NY 2715606406

A poorly defined, low mound cairn; it is orientated with stone bank/long cairns 87 & 95 it may be a part of a single field boundary that comprises 86-88 & 95. It comprises irregular stones protruding from the turf.

Size: length 9.2m width 3.1m height 0.1m

89 - CAIRN - NY 2714106381

A low mound with ill-defined edges and has a few small stones protruding from the turf cover.

Size: length 5.1m width 3.5m

90 - CAIRN - NY 2714406391

A very poor and ill-defined low mound, a few stones protrude from the turf/matt grass cover.

Size: length 2.9m width 2.9m height 0.1m

91 - CAIRN ? - NY 2715206346

A boat shaped 'kerb' of medium sized stones enclosing a central grassy area free of stones (excepting one small patch of small stones. The area is level with the external ground level.

Size: length 12m width 7m height 0.2m

92 - ENCLOSURE/CAIRN ? - NY 2716006336

This is a grassy flat area enclosed by a rectilinear bank of earthfast stones c.0.8m across. On the west side there is an 'entrance' 0.5m wide. The enclosure bank to the south of this 'entrance' turns in east towards the centre of the area. In the centre there is a spread of apparently modern, fine gravel, which may possibly be dump related to workings on the river nearby. There is the possibility that this is a

rectilinear enclosure, judging by the 'entrance' which looks deliberately constructed. However the bank is very irregular in width and on the south-east side it becomes about 2 - 3m in width, as if the depression in the middle was disturbance and this south eastern side was left undisturbed. Considering that almost all the cairns in the immediate vicinity of the modern field boundary have disturbance to a lesser or greater degree this possibility can not be dismissed.

Size: length 14m width 7m height 0.4m

#### 93 - CAIRN & RICK BASE - NY 2716306449 & 2716706451

Cairn:

A sub-rectangular shaped cairn with rounded corners. It comprises exposed stones across the length of the feature and has a closely cropped, grass covered perimeter. The exposed stones are blackened in places possibly indicating action by fire.

Size: length 5.6m width 4.3m height 0.5m

Rick Base

A circular arrangement of small and medium stones (sized c.0.4m across) set in grass covered ground. The centre of the circle is open and the stones are apparently one course deep. There is no trace of fire damage on the stones similar to that appearing on stones in other sites. The circle may be a recent feature, however the consolidation of the grass cover around the stones suggests that the present setting may be relatively long standing. It is possibly a rick-base.

Size: length 1.9m width 1.9m height 0.2m

#### 94 - BANK? - NY 2718806452 - 2717706450

A low bank comprising many medium to large stones, with little turf cover. It is on top of a large, stone covered ridge which marks the edge of a morainal deposit. The bank is more prominent than the rest of the morainal ridge and it has a definite edge, suggestive of an artificial origin. Although it is possible that the bank is a part of the moraine there is also a possibility that it was stone clearance dumped on top of natural.

Size: length c.16m width c.3m

#### 95 - STONE BANK/CAIRN - NY 2716406401

This site is orientated west-north-west/east-south-east and is associated with site 88. It comprises an ill-defined, low mound with a few large stones protruding from the turf. It probably represents (along with stone banks 86-88) patchy stone clearance on the line of a former boundary.

Size: length 8m width 2.8m

#### 96 - CAIRN - NY 2716906399

A low, poorly defined turf mound with a few stones protruding. It is a tiny feature in between sites 95 & 97. It is probably a discontinuous pile of clearance on the line of a former field boundary.

Size: length 1.9m width 1.9m height 0.1m

#### 97 - CAIRN ? - NY 2717106407

A low, mound of small to medium stones protruding from the turf. It is roughly pear shaped but has a central stone free section which may be a result of disturbance. Around it there are confused isolated patches of stone. Without excavation any interpretation is likely to be unreliable.

Size: length 12.1m width 5.5m height 0.2m

#### 98 - STONE BANK? - NY 2716906378

A long, low grassy mound from which a few medium and larger stones protrude. The larger stones average 0.6m across. It is probably a continuation of stone bank 99.

Size: length 12m width 3.0m height 0.2m

#### 99 - CAIRN/STONE BANK - NY 2717606391

An oval shaped cairn orientated north-east/south-west. The north edge is wedge shaped whilst the south edge is rounded. Grass covers the perimeter and part of the centre of the site but the centre in particular is

exposed. There are depressions in the centre of the site which are possibly a result of disturbance.  
Size: length 17.0m width 4.5m height 0.2m

100 - CAIRN - NY 2717506435

90% of the mound comprises exposed small, medium and large stones. Numerous hollows exist in the surface of the mound and a modern cairn stands at the southern end adjacent to the modern path. The northern and southern ends of the mound are rounded. There are blackened stones within the site indicative of fire damage. The perimeter of the mound is grass covered.

Size: length 9m width c.5.5m height 0.6m

101 - CAIRN - NY 2717606413

A poorly defined, low mound with a depression in the centre indicating modern disturbance.

Size: length 3.2m width 3.2m height 0.1m

102 - CAIRN - NY 2718006417

A low, turf covered mound with small to large stones protruding from the turf. The cairn has poorly defined edges but a small tail of turf covered stone extends to the south.

Size: length 3.6m width 3.6m height 0.2m

103 - CAIRN ? - NY 2718006375

A cairn of exposed stones with grassy banks on the perimeter and grass over parts of the centre of the mound. The centre has been hollowed probably a result of robbing for the nearby modern field wall. There is a circle of stones in the centre of the hollow and therefore post dates the disturbance. A similar type of ring of stones (105b) comprises a half ring which butts onto the modern field wall and hence must also be of a recent date. The orientation is north-west/south-east. The north end of the site is slightly pointed whilst the south end is rounded.

Size: Diameter of stone ring 1.5m

Long Cairn : length 15m width 6m height 0.3m

104 - CAIRN - NY 2718706398

An apparently undisturbed round cairn which may possibly be a natural feature. The site comprises an almost entirely grass covered mound with occasional stones protruding.

Size: length 2.6m width 2.6m height 0.3m

105 - CAIRN - NY 2720006400

The site is divided into three parts (a-c), which all merge with each other.

Part a) is a low mound of exposed stones with a small grass patch in the middle. There is a depression in the centre and it appears to have been disturbed and robbed, presumably for the adjacent dry stone wall.

Size: length 19.0m width 5.0m height 0.25m

Part b) is a small, semi-circular ring of stones, it butts onto the modern field wall and so post dates the wall. There is a similar sized ring in long cairn 349 which may be of a similar, recent date. The long cairn (a) predates the wall, as it was apparently robbed during the walls construction, whereas part b) post-dates the wall hence these two parts were not contemporary.

Size: c.3.5m width 3m

Part c) site lies adjacent to part a), being separated by a gap 0.9m wide, from which only a few stones protrude. It may be a continuation of part a) or a separate feature. The site can be divided into two distinct halves, the west half forms an approximate semi-circle whilst the east half is irregular and suggests disturbance and robbing. There are blackened stones protruding from the turf which is an indication of burning. The site is orientated north/south.

Size: length 3.4m width 2.0m height 0.2m

106 - CAIRN - NY 2719306428

A very low, grassy mound with medium sized stones protruding and an area of smaller stones exposed in the

centre.

Size: length 2.2m width 2.2m height 0.1m

107 - CAIRN - NY 2722206431

A low, turf covered mound with stones protruding. There is a square shaped depression in the centre which is probably a result of modern disturbance.

Size: length 4.4m width 3.0m height 0.1m

108 - CAIRN - NY 2723906415

A low mound of turf and moss with stones protruding from the turf. It is reasonably defined but there is a slight depression at the east side.

Size: length 5m width 5m height 0.2m

ô;T7

Š 109 - CAIRN - NY 2724506421

This is a very low, turf and moss mound with a few medium stones protruding from the vegetation. It has a slightly elongated, irregular shape and the definition of the edges are slightly ill-defined.

Size: length 4m width 3.5m height 0.1m

TYPE/PERIOD-GEN/PERIOD-SPEC/FORM = Cairnfield/Prehistoric//;Field system-linear/Prehistoric//

VISITS = Claris P/4/7/84

CLAU SURVEY NO. = 58-109

1:10000 PLAN = NY 20 NE

8671 SITE NAME = MICKLEDEN EAST

LOCAL AUTHORITY = SOUTH LAKELAND PARISH = LAKES

NGR = NY 2735006380 HEIGHT OD = 130m

1:10000 PLAN = NY 20 NE

DESCRIPTION =

PRN 8671

110 - ENCLOSURE - NY 2730806468

Two celled dry-stone enclosure. The south-eastern cell was possibly a hut however because of considerable collapse there is no evidence of any entrance. The larger, north-western cell has an entrance on the southern side and was possibly a stock shelter. The structure is relatively isolated from the adjacent cairnfield and was not necessarily a related component. It was possibly a shieling.

Size: length 13m width 7m

111 - ENCLOSURE - NY 2733506415

There are two elements to this site a rectilinear enclosure and an adjacent cairn.

The enclosure is approximately rectangular with openings at each end and exhibiting what is possibly modern disturbance. The structure is not associated with any cairnfield and it was possibly a shieling.

Size: length 9m width 8m height 0.3m

Wall thickness: 1.5m

The cairn is a low, turf covered mound which has an edge comprising medium to large stones. There are two large boulders of 1.0m diameter on the north side. A track passes to the north of the cairn.

Size: length 4.0m width 4.0m height 0.1m

112 - CAIRN - NY 2737406327

A very badly damaged, large solitary cairn. This site appears to have been robbed to obtain material for maintaining the adjacent valley track (by the National Parks Authority). The lack of vegetation cover is a result of recent burning. The site has a central depression 7.0m diameter. Subsequent to the survey a large amount of spoil was dumped onto the cairn, from the cutting of a nearby drain; the cairn is now completely covered.

Size: length 8.0m width 8.0m height 0.2m.

TYPE/PERIOD-GEN/PERIOD-SPEC/FORM = Cairnfield/Prehistoric//  
CLAU SURVEY NO. = 110-112  
VISITS = Mathews J/4/7/1984

8672 SITE NAME = MICKLEDEN EAST

LOCAL AUTHORITY = SOUTH LAKELAND PARISH = LAKES

NGR = NY 2707006220 HEIGHT OD = 120m

1:10000 PLAN = NY 20 NE

DESCRIPTION =

PRN 8672

113 - CAIRN - NY 2696306262

An ill-defined, turf covered mound with small and occasional large stones protruding from the turf. There is a slight linear extension towards the south-west. The cairn is orientated east/west.

Size: length 8.2m width 4.4m

114 - CAIRN - NY 2698006259

A possible large cairn however stones are exposed only around the north-west edge, consequently this is the only side recorded. It contains a few stones protruding from turf defining a narrow band 1.0m in width and

ô;T7

S

there is a larger concentration of stones at the west end. It is very ill-defined, rather dubious and is possibly natural.

Size: length c.11m width c.6m

115 - CAIRN - NY 2698106246

A very ill-defined, low, turf covered mound with a few large and medium stones protruding from the turf. The shape is irregular and the edges are poor.

Size: length 3.3m width 3.3m

116 - CAIRN - NY 2699306270

This is a large and well-defined round cairn. There is a depression in the centre which may be a result of disturbance; it is turf covered throughout apart from in the centre where there are loose small and medium stones exposed.

Size: length 6.0m width 6.2m height 0.5m

117 - CAIRN - NY 2699806257

A small, ill-defined round cairn which has a few small and medium stones protruding from the turf cover.

Size: length 2.7m width 2.5m

118 - CAIRN - NY 2700906237

A low, turf covered mound with a large number of medium to large stones protruding from the turf. It has well-defined edges. There is a prominent boulder on the east side.

Size: length 5.3m width 3.6m height 0.1m

119 - CAIRN - NY 2701206265

This is a slightly pear-shaped, low, turf mound with medium stones protruding from the turf.

Size: length 6.8m width 4.0m height 0.1m

120 - CAIRN - NY 2702606231

An irregularly defined cairn covered by turf except for the central area which comprises small to large loose stones. The shape is erratic.

Size: length 3.6m width 3.5m height 0.1m

121 - CAIRN - NY 2703706222

A well-defined, regular shaped mound. It is turf covered with a few stones protruding and is orientated



west north-west/east south-east.

Size: length 6.8m width 4.4m height 0.3m

122 - CAIRN - NY 2703806252

An ill-defined, turf-covered mound with a few small and large stones protruding from the turf. The orientation of the mound is north-west/south-east.

Size: length 4.6m width 5.3m height 0.3m

123 - CAIRN - NY 2704606236

A well-defined mound with medium and small stones protruding from the turf cover.

Size: length 9.4m width 3.8m

124 - CAIRN - NY 2704506239

A reasonably well-defined, low mound with small stones protruding from the turf cover. In parts many of the stones are loose on the surface.

Size: length 8.7m width 5.3m height 0.2m

125 - CAIRN - NY 2704606248

An irregularly shaped round-cairn with many small stones protruding from the turf cover. It is possibly linked with long cairn site 124.

Size: length 4.4m width 4.3m height 0.2m

126 - CAIRN ? - NY 2704506257

A small pile of stones on top of a large boulder; turf covers some of the stones. The site is orientated north-west/south-east. It is possibly modern.

Size: length 2.3m width 1.8m height 0.3m

127 - CAIRN - NY 2706106234

A fairly well-defined, turf-covered mound with small and medium stones protruding. The site exhibits no evidence of disturbance.

Size: length 5.0m width 5.0m height 0.6m

128 - CAIRN - NY 2707806213

A pear shaped mound orientated west/east. The cairn comprises mainly small to medium stones protruding from the turf and large boulders resting on top.

Size: length 4.3m width 3.6m

129 - CAIRN - NY 2708606258

A poorly defined, turf-covered mound with small and medium stones protruding. There is a large prominent piece of natural rock on the eastern side, and it would seem that the clearance stone has been built up around natural.

Size: length 3.6m width 3.5m

130 - CAIRN - NY 2709206263

A low, turf-covered mound with large, medium and small stones protruding. In the centre of the cairn there is a square depression which was probably a result of disturbance. A large boulder lies to the east of the cairn. It would seem that the cairn has been built around natural in order to maximise the usable land.

Size: length 5.4m width 5.4m height 0.2m

131 - CAIRN - NY 2710506239

This is a low but reasonably well-defined, turf-covered mound with a considerable amount of medium stones protruding from the turf.

Size: length 5.1m width 4.2m height 0.1m

Š

132 - CAIRN - NY 2713606214

An irregularly defined, turf-covered mound with medium and large stones protruding.

Size: length 6.5m width 4.4m height 0.1m

133 - STONE BANK ? - NY 2715806192

A low, turf covered linear-feature aligned north-west/south-east. It is rather poorly defined and has a few small stones protruding from the turf and one very large boulder in the middle.

Size: length 15.9m width 2.3m height 0.1m

134 - CAIRN? - NY 2716706218

This is a low mound comprising stones with angular breaks. The site has a square depression in the centre which this may possibly be modern disturbance. The cairn itself may just be a natural feature.

Size: length 3.0m width 3.0m height 0.1m

TYPE/PERIOD-GEN/PERIOD-SPEC/FORM = Cairnfield/Prehistoric//

CLAU SURVEY NO. = 113-134

VISITS = Quartermaine J/9/7/1984

8673 SITE NAME = MICKLEDEN WEST

LOCAL AUTHORITY = SOUTH LAKELAND PARISH = LAKES

NGR = NY 26530717 HEIGHT OD = 170m

1:10000 PLAN = NY 20 NE

DESCRIPTION =

PRN 8673

135 - SHEEPFOLD - NY 26530717

A two compartment enclosure with dry stone walls standing up to 1.4m high. It is located on the upper edge of a large drumlin below Mart crag moor; it is sub divided into two parts and has two 'tails' extending south-east. It is generally in good condition, and is probably only recently disused. The vegetation is grass and bracken. The walls are about 0.5m thick. ô;T7

Š Size: length 25m width 10m height 1.4m

TYPE/PERIOD-GEN/PERIOD-SPEC/FORM = Bothy///

CLAU SURVEY NO. = 385

VISITS = Claris P/27/6/1985

8674 SITE NAME = STAKE BRIDGE

LOCAL AUTHORITY = SOUTH LAKELAND PARISH = LAKES

NGR = NY 262073 HEIGHT OD = 170m

1:10000 PLAN = NY 20 NE

DESCRIPTION = PRN 8674

136 - SHEEPFOLD - NY 26130735

This is one large enclosure with two subsidiary enclosures opening from the interior of the large enclosure. The sheepfold is located at the head of the valley where the paths diverge to Rossett ghyll and Stake pass. The condition is fair to poor and is evidently disused there is wall collapse every few feet.

Size: length 18m width 15m

137 - STONE BANK - NY 2617707333 - 2620607311

A stone bank about 2m wide, butting a circular stone feature with a stone free centre. It increases in width (to the west of the circular feature) to 3.4m wide at the end. It is separated by a gap of 3m containing a few random stones and then appears again as a large mound of stones, which then continues as a short stretch of stone bank to the side of the bank of Mickleden beck. It is probable that it is a linear manifestation of stone clearance.

Size: length 37m width 2m height 0.3 - 0.5m

138 - CAIRN? - NY 2619507350

An ill-defined area of stone, beside a drumlin which may be natural.  
Size: length 11m width 5m

139 - CAIRN? - NY 2621207323

An approximately elliptical line of stones located on a natural slope.  
Size: length 10m width 5m height 0.4m

140 - CAIRN - NY 2627307334

An approximately oval cairn, which is apparently undisturbed. It is a stone mound which is located with its west edge butting a natural rise in ground surface.  
Size: length 8m width 5m height 0.4m

TYPE/PERIOD-GEN/PERIOD-SPEC/FORM = Cairnfield/Prehistoric//;Field system-linear/Prehistoric//;Bothy///

CLAU SURVEY NO. = 136-140

VISITS = Claris P/27/6/1985

8675 SITE NAME = MICKLEDEN

LOCAL AUTHORITY = SOUTH LAKELAND PARISH = LAKES

NGR = NY 2676906948 HEIGHT OD = 120m

1:10000 PLAN = NY 20 NE

DESCRIPTION =

PRN 8675

141 - CAIRN - NY 2676906948

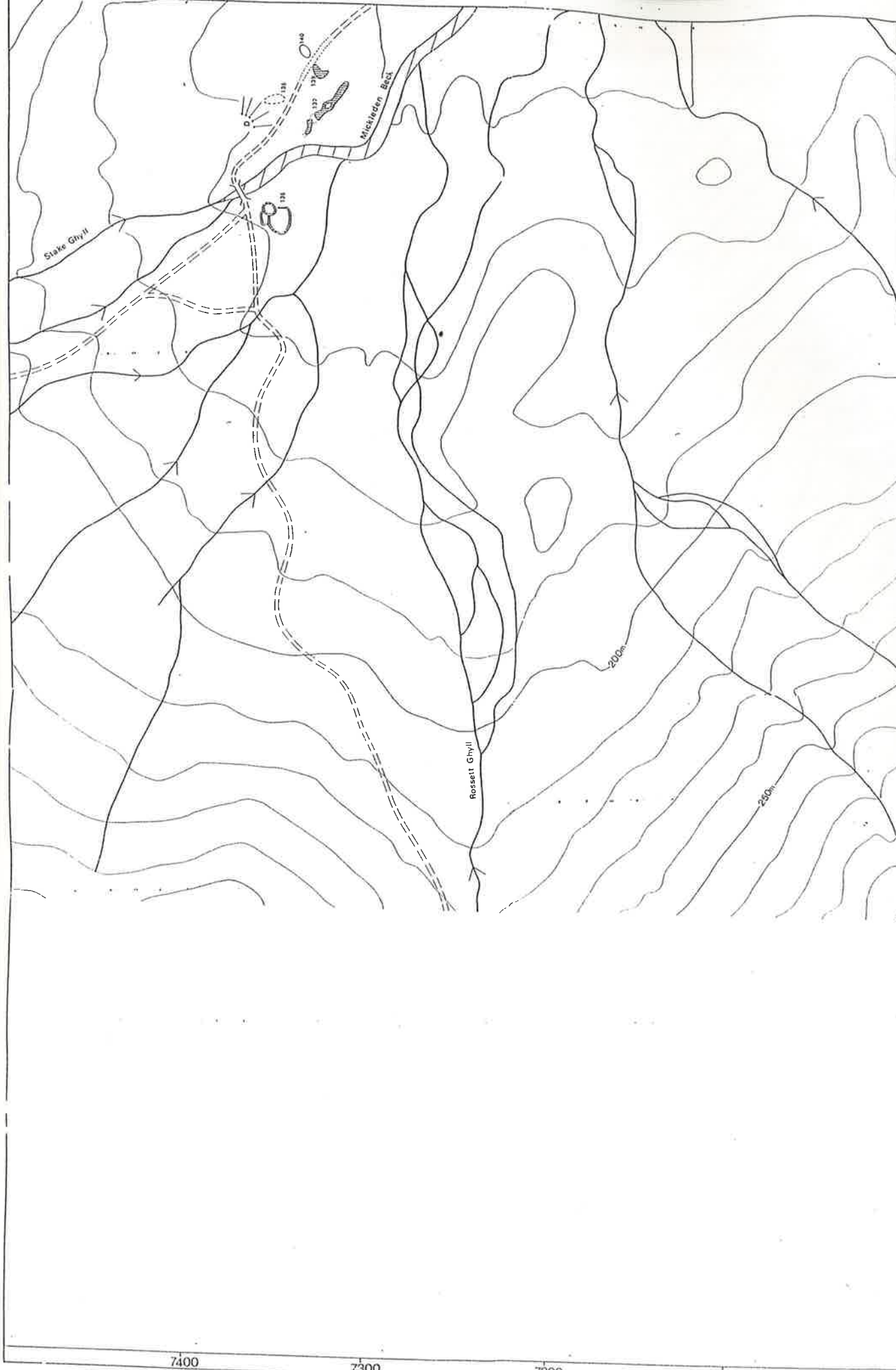
A low, slightly ill-defined mound with mainly medium stones protruding from a turf free centre. There is a slight depression in the centre. It is isolated from any of the main cairn groups and is on the Mickleden flood plain.

Size: 3.5m width 3m height 0.15m

TYPE/PERIOD-GEN/PERIOD-SPEC/FORM = Cairn///

CLAU SURVEY NO. =

VISITS = Claris P//7/1984



LDNPS

MICKLEDEN BECK

PLAN NAME

Rossett Ghyll

Topographical detail based upon the 1976 Ordnance Survey 1:50,000 map with the permission of the Controller of Her Majesty's Stationery Office. Crown Copyright Reserved.



DRAWN BY

JQ

DATE

7-1985

SCALE

1:1000

SHEET No

1

26100

26000

25900

25800

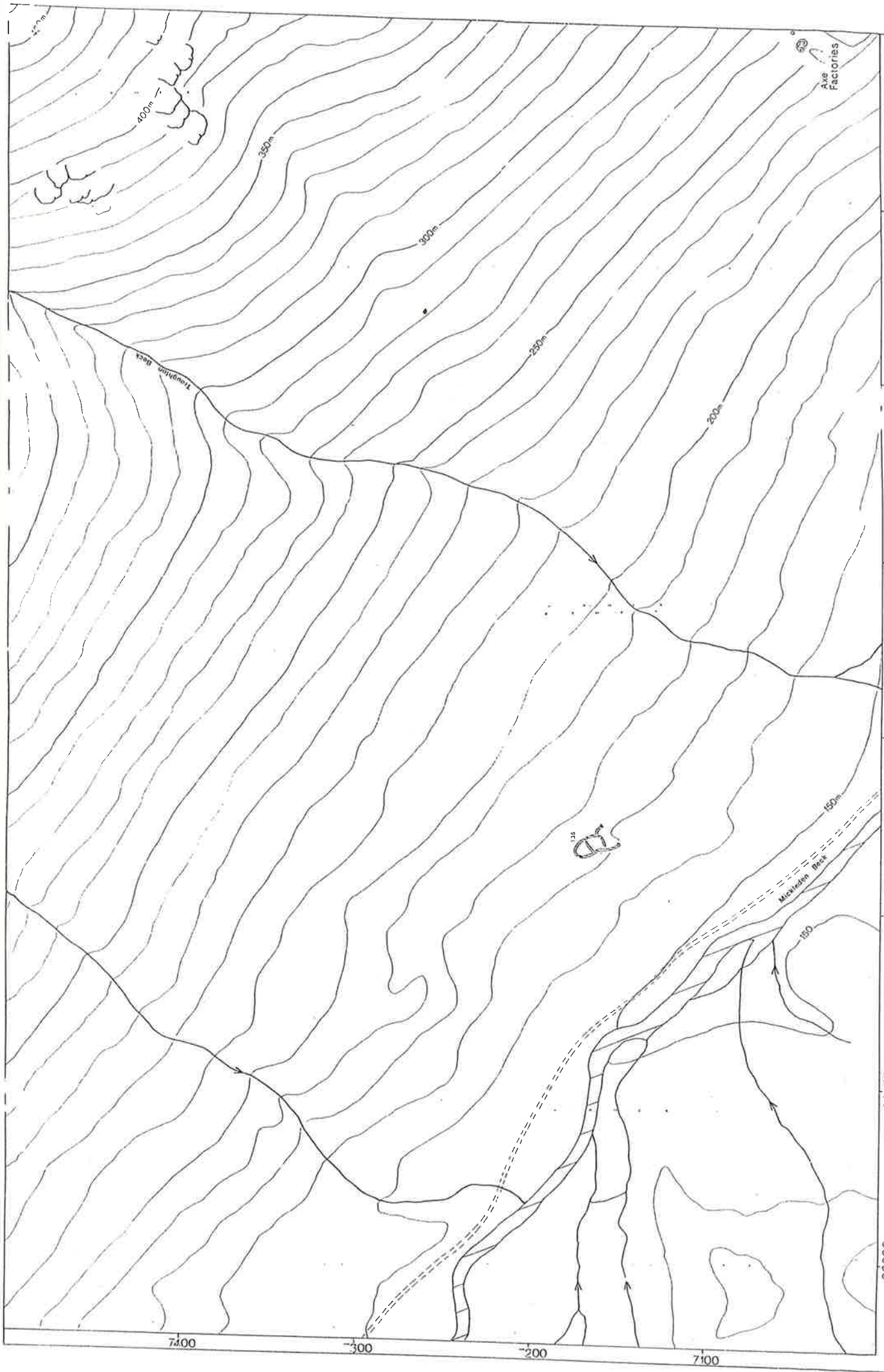
26200

7400

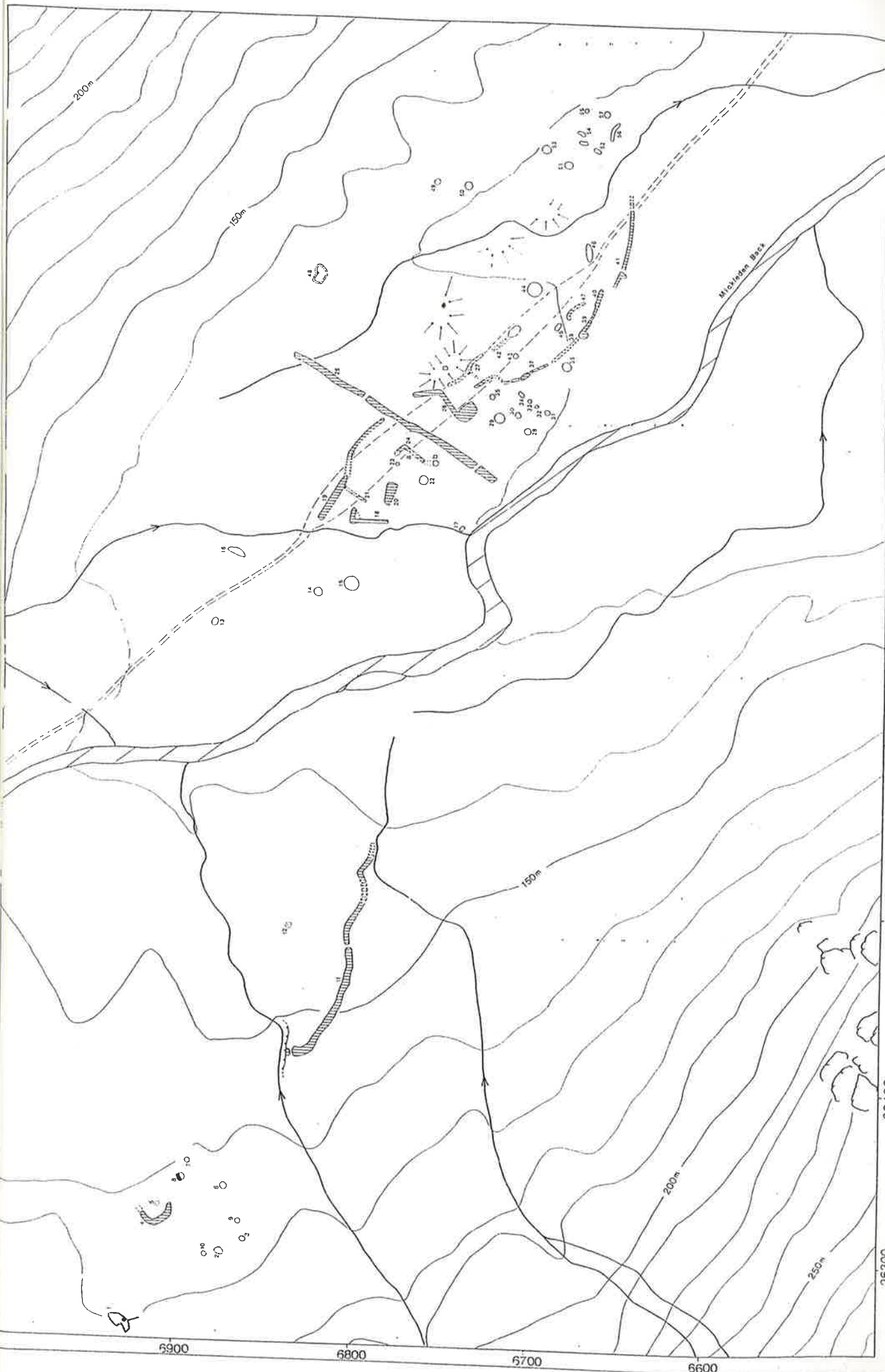
7300

7200

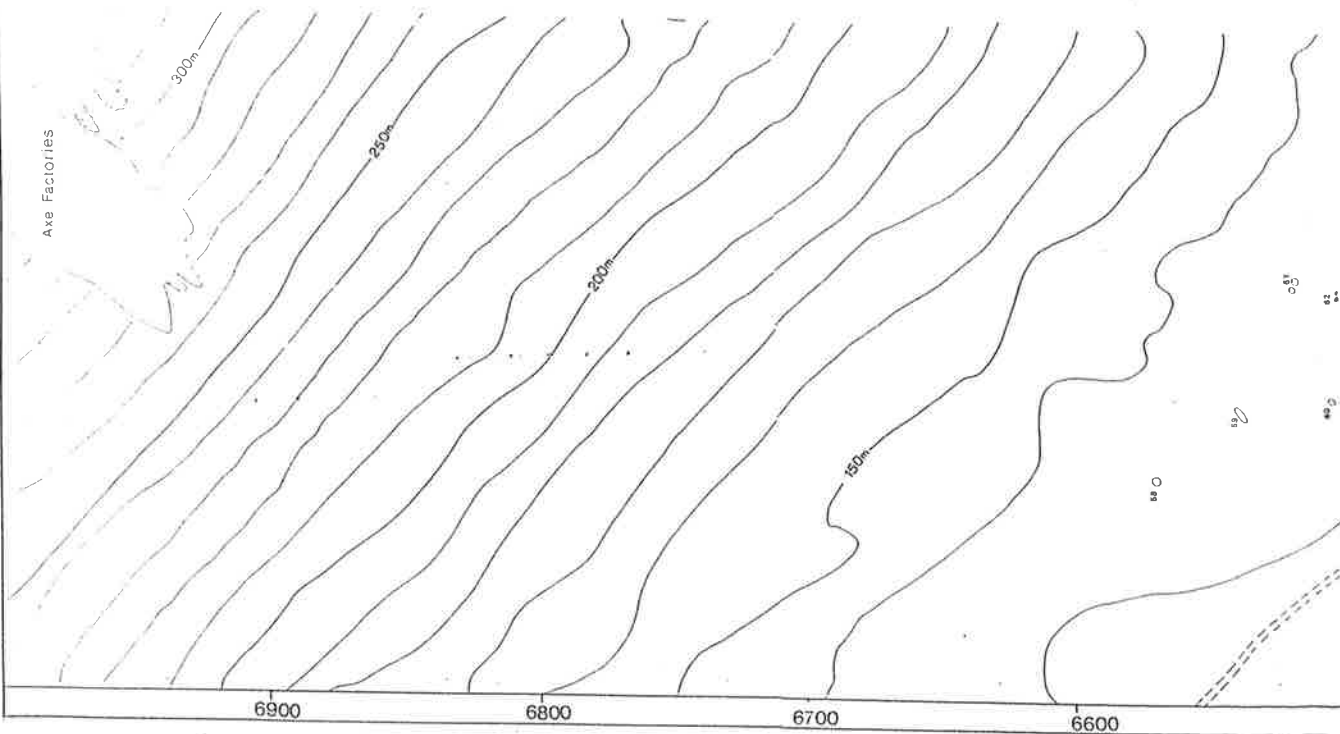
7100



26300	26400	26500	26600	26700	26800	26900
LDNPS			PLAN NAME		Troughton Beck	
MICKLEDEN BECK						
			Topographical detail based upon the 1978 Ordnance Survey 1:50,000 map with the addition of information from the Ordnance Survey's Stationery Office Crown copyright reserved.			
			DRAWN BY		JQ	
			DATE		7 - 1984	
			SCALE		1:1000	
			LANCASTER UNIVERSITY ARCHAEOLOGY UNIT & THE NATIONAL TRUST			
			SHEET No 2			



LDNPS		26300		26400		26500		26600		26700		26800		26900	
MICKLEDEN BECK		Mickleden West		PLAN NAME											
LANCASTER UNIVERSITY ARCHAEOLOGY UNIT & THE NATIONAL TRUST		Teographical detail based upon the O/S Ordnance Survey 1:10 000 map with the permission of the Controller of Her Majesty's Stationery Office. Crown copyright reserved.													
DRAWN BY		JO		SCALE 1:1000											
DATE		7-1984		DATE											
SHEET No		3													



LDNPS

MICKLEDEN BECK

27100

27200

COMMENTS  
 Topographical detail based upon the  
 1978 Ordnance Survey 1:10,000 map with  
 the permission of the Controller of Her  
 Majesty's Stationery Office. Crown  
 copyright reserved.



50m



DRAWN BY

JQ

DATE

6 - 1984

SCALE

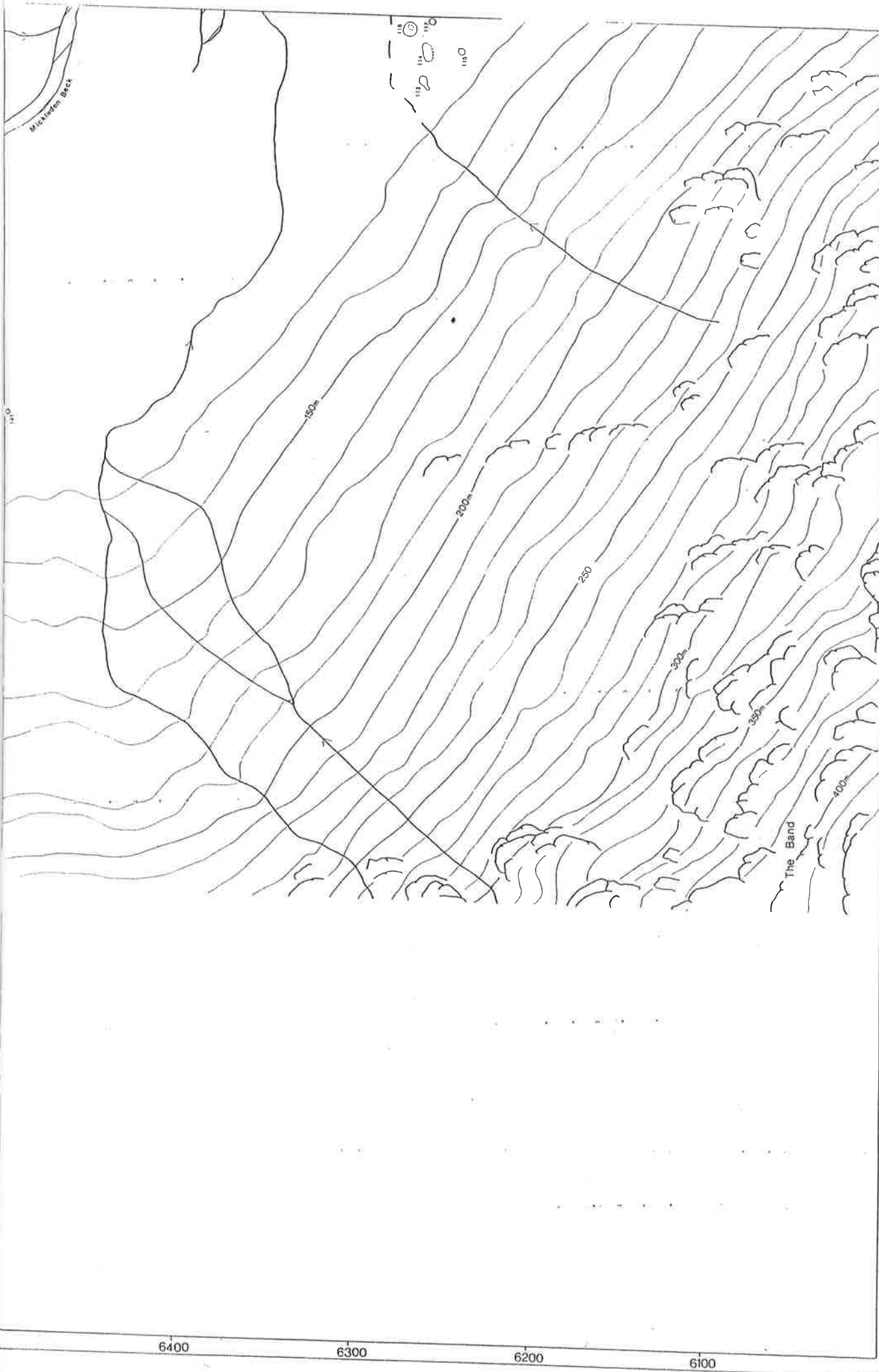
1:1000

SITE CODE

SHEET NO

4

LANCASTER UNIVERSITY ARCHAEOLOGICAL UNIT



Mickleden Beck

1110

150m

200m

250

300m

350m

400m

The Band

118  
117  
116  
115  
114  
113  
112  
111

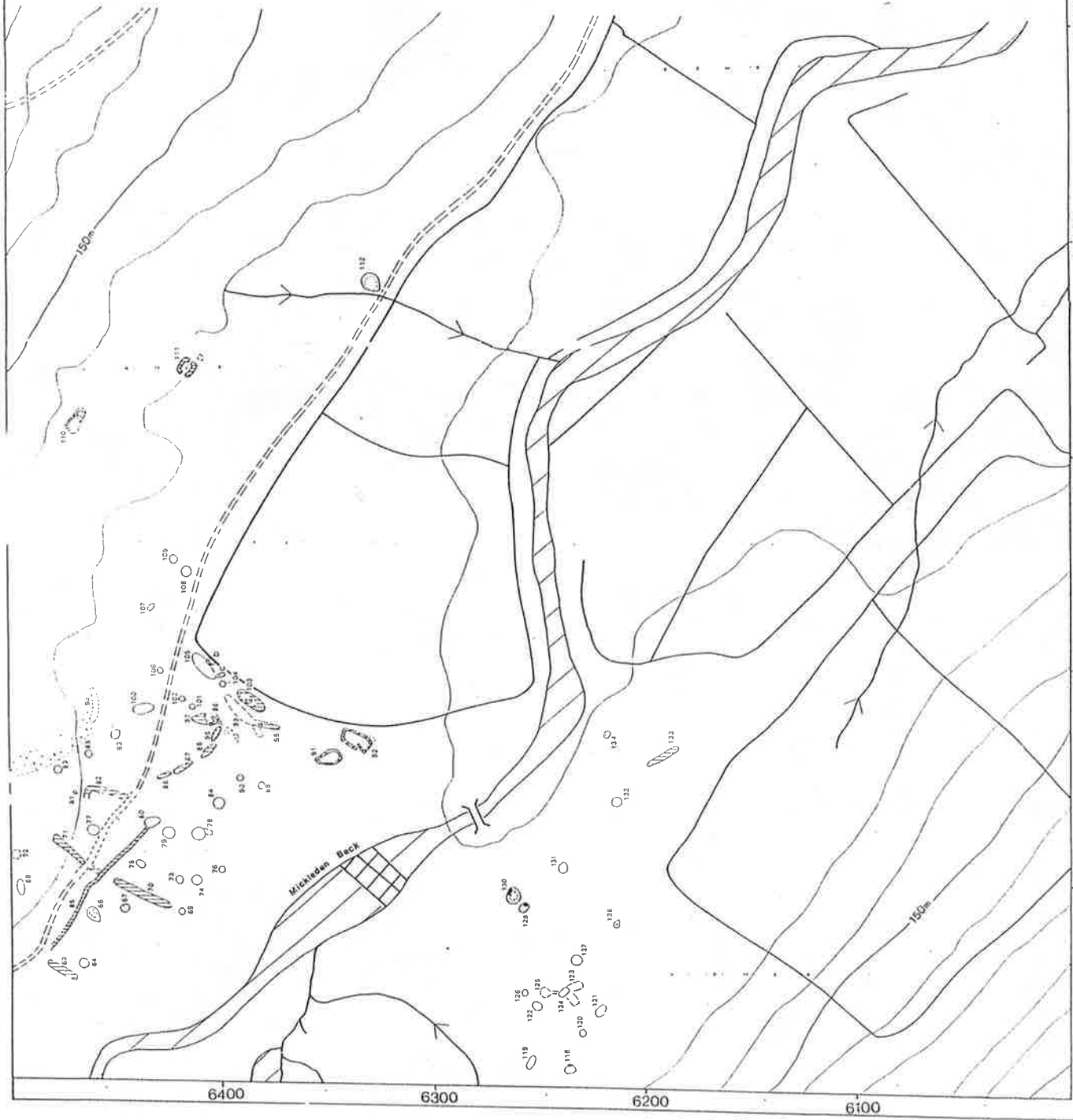
LDNPS MICKLEDEN BECK	PLAN NAME The Band	26500	26600	26700	26800	26900	SCALE 1:1000
							DRAWN BY JQ
							DATE 7 - 1984
							SHEET No. 5



Topographical detail based upon the 1979  
Ordnance Survey 1:10,000 map with the  
addition of the County of Lancashire  
Municipal Survey of 1984. Grid  
505/17101 10361/003

LANCASTER UNIVERSITY ARCHAEOLOGY UNIT & THE NATIONAL TRUST





LDNPS  
MICKLEDEN BECK

PLAN NAME  
Mickleden East

Topographical detail based upon the  
1975 Ordnance Survey 1:10,000 map with  
the permission of the Controller of Her  
Majesty's Stationery, British Crown  
Geographical Institute

SCALE 1:1000  
DRAWN BY JQ  
DATE 7-1984

SHEET No. 6  
LANCASTER UNIVERSITY ARCHAEOLOGY UNIT & THE NATIONAL TRUST