

Corney Fell Site Catalogue
Lake District National Park Survey 1984

Dr. R.H.Leech

18-4-1991

**Lancaster University Archaeological Unit
Physics Building
University of Lancaster
Lancs.
LA1 4YW**

Corney Fell Site Catalogue - LDNPS 1984

8786 Cumbria SITE NAME = Cairns northwest of Kinmont Beck, Corney Fell
 LOCAL AUTHORITY = Copeland PARISH = Waberthwaite
 A.M. COUNTY NO. = SAM 130/a NGR = SD 1267 9040 HEIGHT OD = 160m - 205m
 O.S.NO. = 6
 1:10000 PLAN = SD19NW
 CLAU SURVEY NO. = 1-112
 DESCRIPTION =
 Cairns

Detailed references below are to the CLAU survey:

Description of Cairns

No	Cond	Description
1	Fair Well defined,	3.8mavd, 0.55mh, (84/99)
2	Fair Well defined,	3.7mavd, 0.3mh, (84/100)
3	Fair Boulders protrude from turf cover,	5.6mavd, 0.4mh, (84/104)
4	Fair Well defined, some stones protrude,	7.0mavd, 0.6mh, (84/103)
5	Fair Well defined, stones protrude in centre,	3.5mavd, 0.35mh, (84/102)
6	Poor Ill defined, stones protrude in centre,	4.2mavd, 0.4mh, (84/101)
7	Fair Loose with some earthfast boulders,	5.8mavd, 0.3mh, (84/106)
7a	Fair Stones protruding from grass cover, orientated E-W,	6.8ml, 1.5mw, (84/105/2)
7b	Fair Stones protrude from grass cover, orientated E-W,	6.8ml, 1.5mw, 0.3mh, (84/105/1)
8	Fair Well defined, boulders protrude from turf cover,	3.5mavd, 0.25mh, (84/137)
9	Poor Scatter of boulders protruding from turf cover,	4.2mavd, 0.25mh, (84/107)
10	Fair Small boulders protrude from turf cover,	3.6mavd, 0.2mh, (84/108)
11	Poor Stones protrude from turf cover,	3.0mavd, 0.15mh, (84/109)
12a	Poor Boulders protruding from turf cover,	2.4mavd, 0.2mh, (84/111)
12b	Poor Few stones protrude from turf cover,	1.9mavd, 0.1mh, (84/112)
13a	Fair Boulders protrude from turf cover,	3.2mavd, 0.3mh, (84/114)
13b	Fair Large boulders protrude from turf cover,	4.2mavd, 0.4mh, (84/113)
14	Fair Large boulders protrude from turf cover,	4.8mavd, 0.4mh, (84/115)
15	Poor Large stones protrude in centre,	3.1mavd, 0.15mh, (84/110)
16a	Fair Scatter of varying size boulders protruding from turf cover,	3.6mavd, 0.25mh, (84/136)
16b	Fair Well defined, boulders protrude from turf cover,	4.7mavd, 0.25mh, (84/135)
17a	Fair Boulders of varying size protrude from turf, cairns in line, 8.2ml, 3.4mw, 0.3mh, (84/134)	26,27,19,17a,b,c all appear to be
17b	Fair Small stones protrude from turf cover,	4.6mavd, 0.3mh, (84/133)
17c	Fair Well defined, few boulders protruding from turf,	4.9mavd, 0.3mh (84/132)
18a	Fair Well defined, boulders protrude from turf cover,	3.4mavd, 0.25mh, (84/139)
18b	Poor Ill defined, boulders protrude from turf cover,	4.1mavd, 0.15mh, (84/138)
19	Poor Varying sized boulders protrude turf cover, centre dug out, (84/130)	?disturbed, 5.0mavd, 0.25mh,
20	Fair Well defined, small stones protrude from turf cover,	2.4mavd, 0.25mh, (84/129)
21	Poor Ill defined, large earthfast boulder to SW, some stones (84/131)	protrude from turf, 3.6mavd, 0.2mh,
22	Fair Few boulders protrude from turf cover,	4.8mavd, 0.35mh, (84/128)
23	Fair Few boulders protrude from turf cover,	3.7mavd, 0.2mh, (84/127)
24	Good Well defined, very large boulder protrudes to S side, smaller turf cover, 4.5mavd, 0.4mh, (84/126)	boulders protrude from
25	Poor Ill defined, gorse cover to S,	3.0mavd, 0.1mh, (84/237)
26	Good Well defined large and small boulders protrude from turf	cover, 4.2mavd, 0.4mh, (84/117)
27	Fair Well defined, boulders protrude from turf cover,	4.0mavd, 0.2mh, (84/116)
28	Fair Well defined, boulders protruding from turf,	4.0mavd, 0.25mh, (84/118)

- 29 Fair Some boulders protrude from turf cove, 3.6mavd, 0.2mh, (84/122)
- 30 Fair Few variable sized boulders protruding from turf, 3.3mavd, 0.2mh, (84/119)
- 31 Fair Large stones protrude from turf cover, 7.6mavd, 0.3mh, (84/121)
- 32 Fair Boulders protrude from turf cover, 6.8ml, 4.0mw, 0.35mh, (84/120)
- 33 Poor Large boulders protrude on NE side, section flatter to SE ?disturbed, 5.3mavd, 0.25mh, (84/124)
- 34 Good Well defined, large boulders protrude from turf, 5.0mavd, 0.4mh, (84/125)
- 35 Poor Ill defined some large boulders protrude from turf cover, 4.7mavd, 0.35mh, (84/140)
- 36 Poor Ill defined, some boulders protrude from turf cover, mound has lower section S of centre, ?disturbed, 4.0mavd, 0.45mh, (84/141)
- 37 Fair Large boulders protrude from turf cover, 4.0mavd, 0.35mh, (84/142)
- 38 Fair Some large boulders protrude from turf cover, 4.9mavd, (84/123)
- 39 Fair Small stones protrude from turf, 4.2mavd, 0.3mh, (84/143)
- 40a Poor Ill defined, few stones protrude in centre, 2.0mavd, 0.1mh, (84/235)
- 40b Fair Stones protrude, hole to N side of top (1.9ml, 0.9mw, 0.2mw), 2.5mavd, 0.25mh, (84/236)
- 41 Poor Ill defined scatter of boulders protrude from turf cover, 6.2mavd, 0.2mh, (84/153)
- 42 Fair Some boulders protrude from turf cover, 2.7mavd, 0.25mh, (84/144)
- 44 Fair Scatter of boulders protrude from turf cover, 6.8mavd, 0.35mh, (84/152)
- 46 Fair Large boulder spread protrudes from turf cover, 5.0mavd, 0.35mh, (84/147)
- 47 Fair Stones protrude from turf cover, 3.8mavd, 0.15mh, (84/148)
- 48 Fair Stones of varying sizes protrude from turf cover, 4.0mavd, 0.2mh, (84/149)
- 49a Fair Boulders protrude to NW, 3.2mavd, 0.25mh, (84/151)
- 49b Fair Few stones protruding from turf cover, 4.9ml, 1.8mw, 0.2mh, (84/150)
- 50 Poor Ill defined, two large stones on S side, 2.2mavd, 0.15mh, 884/233)
- 51 Fair Large boulder spread protrudes from turf cover, especially in centre, 4.7mavd, 0.4mh, (84/146)
- 53 Fair Varying sized boulders protrude from turf cover, 4.3mavd, 0.3mh, (84/156)
- 54a Fair Boulders protrude from turf cover, denser to S, 5.0mavd, 0.3mh, (84/154)
- 54b Poor Ill defined, scatter of boulders protrude from turf cover, 5.0mavd, 0.3mh, (84/154)
- 55 Fair Well defined, scatter of small boulders protruding from turf cover, 4.2mavd, 0.25mh, (84/155)
- 56 Fair Stones protrude from turf cover, 4.0mavd, 0.3mh, (84/157)
- 58 Poor Ill defined, scatter of boulders protrude from turf cover, denser on E, 4.0mavd, 0.15mh, (84/159)
- 59 Poor Ill defined, boulders in centre, 3.4mavd, 0.1mh, (84/160)
- 60 Fair Well defined stone outline, larger stones in centre, 3.2mavd, 0.15mh, (84/232)
- 61 Poor Ill defined, 3 small stones protrude, 2.8mavd, 0.1mh, (84/226)
- 61a Poor Ill defined, some stones protrude, 2.8mavd, 0.1mh, (84/228)
- 61b Fair Large stones on S edge (1.3mlx0.5x0.5), 3.3mavd, 0.15mh, (84/227)
- 62 Poor Ill defined edges, scatter of boulders protrude from turf cover, 4.5mavd, 0.15mh, (84/161)
- 63 Poor Ill defined, varying sized boulder scatter protrudes from turf cover, 4.2mavd, 0.15mh, (84/162)
- 64 Fair Varying sized boulders protrude from turf cover, 5.4mavd, 0.25mh, (84/163)
- 65 Fair Small stone scatter protrudes from turf cover, lower section to S is ?disturbed, 4.6mavd, 0.2mh, (84/165)
- 66 Fair Varying sized boulder scatter protrudes from turf cover, 5.7mavd, 0.25mh, (84/164)
- 67 Fair Varying size stones protrude from turf cover, some large, one to the S appears to have been cut, 4.8mavd, 0.3mh, (84/166)
- 68 Poor Ill defined edges, small stones protrude, 4.7mavd, 0.1mh, (84/224)
- 69 Fair Well defined, stones protrude, 5.0mavd, 0.15mh, (84/229)
- 70 Poor Ill defined, few stones protrude, 2.6mavd, 0.1mh, (84/230)
- 71 Poor Ill defined, few stones protrude, 2.6mavd, 0.1mh, 884/231)
- 72 Fair Well defined, some stones protrude, 4.7mavd, 0.3mh, (84/222)
- 73 Fair Well defined, some stones protruding, 5.3mavd, 0.2mh, 884/223)
- 74 Poor Ill defined, stone scatter down slope on W side, 5.6mad, 0.2mh, (84/221)
- 75a Fair Boulders protrude from turf cover, 4.5ml, 3.4mw, 0.25mh, (84/175)
- 75b Fair Scatter of small and large boulders protrude from turf cover, 3.8mavd, 0.4mh, (84/174)
- 75c Fair Stone scatter protrudes from turf cover, 4.5mavd, 0.25mh, (84/173)
- 76 Fair Scatter of varying sized boulders protruding from turf cover, 4.8mavd, 0.3mh, (84/172)
- 77 Fair Scatter of variable size boulders protruding from turf, aligned E-W, 7.1ml, 2.7mw, 0.4mh

- (84/171)
- 78 Fair Well defined, sparse scatter of boulders protrude from turf cover, 4.2mavd, 0.35mh, (84/167)
 - 79 Fair Dense spread of large boulders protruding from turf cover, 4.5mavd, 0.3mh, (84/168)
 - 80 Poor Ill defined, scatter of large boulders, more around sides, possible disturbance in centre, 7.0mavd, 0.3mh, (84/169)
 - 81 Poor Ill defined, large boulders protrude from turf cover, line of boulders run NW-SE across centre of cairn, boulder at centre loose, 4.3mavd, 0.2mh, (84/176)
 - 82 Fair Scatter of varying sized boulders protruding from turf cover, 6.8mavd, 0.4mh, (84/170)
 - 83 Fair Small boulders protrude from turf over, 4.4mavd, 0.3mh, (84/177)
 - 84 Fair Well defined, small boulders protrude from turf cover, 4.5mavd, 0.3mh, (84/178)
 - 85 Poor Some stones protrude, 3.0mavd, 0.1mh, (84/225)
 - 86a Poor Ill defined, some stones protrude, 3.2mavd, 0.1mh, (84/220)
 - 86b Poor Ill defined, some stones protrude, 4.0mavd, 0.1mh, (84/219)
 - 87 Fair Well defined, small stones protrude, 5.8mavd, 0.35mh, (84/217)
 - 88 Fair Large stones on N edge of mound, 4.5mavd, 0.25mh, (84/216)
 - 89 Poor Ill defined, few small stones protrude, 4.3mavd, 0.1mh, (84/215)
 - 90 Fair Stones protrude in centre, 3.5mavd, 0.15mh, (84/214)
 - 91 Good Well defined, stones protrude, 8.5mavd, 0.3mh, (84/212)
 - 92 Poor Ill defined edges, small stones protrude at centre, 5.1mavd, 0.25mh, (84/210)
 - 93 Good Grass cover, some stones protrude at top towards E side of cairn, 10.5mavd, 0.4mh, (84/211)
 - 95 Fair Ill defined edges, some stones protrude in centre, 6.2mavd, 0.2mh, (84/209)
 - 96 - Small stones protrude, one large on E edge, 4.6mavd, 0.3mh, (84/207)
 - 97a Poor Ill defined boulder spread protruding from turf cover, 8.3ml, 4.0mw, 0.25mh, (84/203)
 - 97b Poor Ill defined boulders spread protruding from turf cover, orientated NE-SW, 10.3ml, 6.0mw, 0.25mh, (84/202)
 - 98 Poor Boulders protrude from turf cover, one large (0.9m x 0.75m) on S side, 4.2mavd, 0.25mh, (84/199)
 - 98a Poor Ill defined boulders spread protruding from turf cover, 6.9ml, 5.1mw, 0.3mh, (84/201)
 - 98b Fair Small boulders protrude from turf, 7.2ml, 3.4mw, 0.25mh, (84/198)
 - 99 Fair Ill defined to NE, boulders protrude from turf cover, 8.9ml, 7.1mw, 0.4mh, (84/200)
 - 100 Good Well defined, large boulders protrude from turf cover, 5.5mavd, 0.4mh, (84/197)
 - 101 Fair Stones protrude at S end, ?continuation of (84/204), orientated N-S, 8.8ml, 5.0mw, 0.25mh, (84/206/1/2)
 - 102 Fair Depression across centre of mound 4.0m from S end, boulders protrude, 10.0ml, 4.4mw, 0.3mh at N 0.2mh at S, (84/204)
 - 103 Fair Well defined, small stones protrude, 4.6mavd, 0.2mh, (84/205)
 - 104 Poor Ill defined edges, some stones protrude from turf cover, 3.5mavd, 0.1mh, (84/208)
 - 105a Fair Small boulders protrude from turf cover, 3.1mavd, 0.25mh, (84/195)
 - 105b Fair Varying sized boulders protrude from turf cover, many loose, 5.5mavd, 0.3mh, (84/196)
 - 106 Fair Small boulders protrude from turf cover, 4.7mavd, 0.25mh, (84/194)
 - 107a Fair Boulders protrude from turf cover, 5.4mavd, 0.3mh, (84/192)
 - 107a Fair Small boulders protrude from turf cover, some larger in depression on W side, ?disturbed, 4.9mavd, 0.15mh, (84/193)
 - 108 Fair Well defined, small boulders protrude from turf cover, 5.7mavd, 0.3mh, (84/189)
 - 109 Poor Ill defined, boulder scatter protruding from turf cover, one boulder (2.6mx0.9ml) earthfast down long axis, orientated N-S, 5.8ml, 4.3mw, 0.1mh, (84/187)
 - 110 Poor Ill defined spread of boulders protrude from turf cover, 5.0mavd, 0.15mh, (84/188)
 - 111 Poor Ill defined spread of boulders protruding from turf cover, 4.0mavd, 0.1mh, (84/191)

Details of Stone Banks

- | No | Cond | Description |
|-----|------|---|
| 51 | Poor | Orientated NE-SW, some stones protrude, 18.8ml, 2.8mw, 0.25mh, (84/234/1/2) |
| 52 | Poor | Aligned E-W, mound with stones protruding, 10.0ml, 2.5mw, 0.2mh, (84/238/1/2) |
| 87 | Poor | Orientated E-W, some stone protrudes, close to N edge of round cairn (87). E end of wall not surveyed, 30.0ml, 2.0mw, 0.2mh, (84/218) |
| 94 | Poor | Ill defined edges, orientated E-W, 15.6ml, 4.2mw, 0.2mh, (84/213/1/2) |
| 105 | Poor | Ill defined, scatter of boulders protrude from turf cover, orientated WNW-ESE, 16.4ml, 0.25mh |

(84/196)

112 Poor Ill defined, ?extension of (84/186), spread of small boulders protruding from turf cover, 17.3ml, 3.4mw, 0.15mh, (84/190)

Details of lynchets

4 Poor Lynchet appearing to run from cairn 2 to 4 (84/103).

TYPE/PERIOD-GEN/PERIOD-SPEC/FORM = Cairnfield/Unknown//Other structure; Walls/Unknown//Other structure;

CLAU SURVEY NO. = 1-112

ARCH HISTORY = Full survey/Lancaster University/1984

VISITS = Leech, R H., CLAU/ 4-1984

SOURCES =

<1> Map/1:10560/OS/1897/Cumberland

<2> Desc Text/Trans Cw2 23 (1923), p.267

<3> Survey records/OS//1973/SD 19 SW 6

<4> Desc text//Fell, C/1972/Early settlement in the Lake Counties/p.66

<5> Survey records/CLAU/various/1984

AREA STATUS = NP;COL

DATE OF COMP. OR UPDATE = Leech, R H., CLAU/ 4-1984

8787 Cumbria SITE NAME = Buckbarrow Bridge West, Corney Fell
LOCAL AUTHORITY = Copeland PARISH = Waberthwaite
NGR = SD 131906 HEIGHT OD = 200m-250m
CLAU SURVEY NO. = 120-297 & 324
DESCRIPTION =

Details of Cairns

No Cond Description

- 121 Fair total grass cover, 3.9md, 0.3mh, (84/69)
122 Fair Small number of stones protruding, orientated N-S, 6.8ml, 3.0mw, 0.2mh, (84/68/1/2)
123 Fair Ill defined, large boulders at centre, disturbed?, 5.0mavd, 0.2mh, (84/71)
124 Fair Well defined, grass cover, 2.9mavd, 0.35mh, (84/91)
125 Fair Boulders of varying sizes protruding from turf cover, 4.7mavd, 0.3mh, (84/61)
127 Fair Well defined, small-large stones protruding from turf cover, 4.2mavd, 0.4mh, (84/60)
128 Fair Well defined, few small boulders protrude from turf cover, 4.4mavd, 0.3mh, (84/62)
129 Fair Well defined, loose boulders in centre, 4.7mavd, 0.4mh, (84/63)
130 Good Well defined, triangular pile of loose boulders, 6.8mavd, 0.3mh, (84/64)
131a Poor Few large boulders protrude, one loose boulder in centre, 3.3mavd, 0.2mh, (84/65)
131b Poor Loose boulders, depression at centre, disturbed?, 3.4mavd, 0.2mh, (84/66)
132 Poor Ill defined, few stones at centre, 3.2md, 0.1mh, (84/72)
133 Fair Well defined, some loose stones in centre, 4.9mavd, 0.35mh, (84/240)
134 Fair Stones protrude in centre, kerb to E, 3.3mavd, 0.2mh, (84/239)
135 Fair Well defined except on E, 4.2md, 0.3mh, (84/73)
136 Fair Boulders protrude from turf, 5.8mavd, 0.3mh, (84/57)
137 Poor Ill defined, few stones protrude from turf cover, 4.3mavd, 0.3mh, (84/58)
138 Poor Ill defined, boulders protrude from turf cover, 8.0ml, 3.0mw, (84/59)
139 Fair Orientated N-S, 5.2ml, 2.0mw, 0.2mh, (84/90/1/2)
140a Poor Ill defined, boulders protrude from turf, 4.2mavd, 0.2mh, (84/55)
140b Poor Ill defined, dense reed cover, 3.0mavd, 0.25mh, (84/89)
141a Fair Well defined, many boulders in centre, 6.8mavd, 0.3mh, (84/54)
141b Poor Stones protrude from turf cover, 4.6mavd, 0.3mh, (84/53)
142 Moderately defined 5.5mavd.
143a Ill defined, 6.1ml, 2.0mw, 0.2mh, (84/40)
143b Fair Small stones protrude from turf cover, 2.8mavd, 0.3mh, (84/41)
144 Fair Well defined, stones protrude to centre, 5.0mavd, 0.3mh, (84/74)
145 Fair Many stones in centre, some loose, some protruding, 4.8mavd, 0.2mh, (84/52)
146 Poor Ill defined, scatter of stone, some earthfast, 5.7mavd, 0.2mh, (84/51)

- 147 Fair Many loose stones in centre, 4.4mavd, 0.4mh, (84/50)
- 148 Fair Stones protrude from turf, one large boulder is earthfast, 3.3mavd, 0.3mh, (84/49)
- 149 Poor Ill defined, possible stone scatter to W, 5.5ml, 2.8mw, 0.1mh, T7:T7 (84/88)
- 150 Fair Cluster of stones on W side, 3.4mavd, 0.15mh, (84/87)
- 151 Fair Loose stones in centre, 4.0mavd, 0.4mh, (84/48)
- 152a Fair Well defined, stones protrude from turf cover, 3.7mavd, 0.4mh, (84/39)
- 152b Good Well defined, 3.2mavd, 0.4mh, (84/38)
- 153 Poor Ill defined, ?part of (84/37), 2.6mavd, 0.3mh, (84/36)
- 154a Fair Well defined except to E, 2.8mavd, 0.2mh, (84/84)
- 154b Poor Ill defined, few loose stones, 3.8mavd, 0.15mh, 884/86)
- 155 Poor Ill defined, gorse grows on cairns only, not in between, 2.2mavd, 0.2mh, (84/47)
- 156 Fair Stones protrude from turf cover, 4.1mavd, 0.2mh, (84/46)
- 157 Fair Well defined, loose stone, 6.0ml, 3.5mw, 0.5mh, (84/45)
- 158 Fair Stones protrude from turf, 3.1mavd, 0.3mh, (84/44)
- 159 Fair Much loose stone, ?kerb, 4.3ml, 3.0mw, 0.4mh, (84/43)
- 160 Fair Many loose stones in centre, 4.0mavd, 0.4mh, (84/42)
- 161 Fair Many stones protrude from turf cover, 3.7mavd, 0.3mh, (84/35)
- 162 Fair Few loose stones in centre, 4.0mavd, 0.4mh, (84/32)
- 163 Fair Scatter of large stones protruding from turf, ?continuation of lynchet 84/31, 3.0mavd, 0.3mh, (84/30)
- 164 Fair Ill defined, 2.6mavd, 0.2mh, (84/34)
- 165 Fair Many stones protrude, 3.5mavd, 0.4mh, (84/33)
- 166 Fair Pear-shaped, orientated E-W, tapering to W, 5.1ml, 4.1mw, 0.4mh, (84/14)
- 167 Fair Some loose stones in centre, 4.0md, 0.3mh, (84/15)
- 168 Fair Few stones in centre, 3.8md, 0.2mh (84/10)
- 169 Fair Loose stones, 4.7md, 0.3mh, (84/9)
- 170a Fair Pear-shaped, orientated E-W, tapering to W, 4.5mavd, 0.3mh, (84/8)
- 170b Poor Ill defined, appears V-shaped pointing S, 2.5mavd, (84/7)
- 171 Fair stone scatter to E of centre, 4.1md, 0.3mh, (84/6)
- 172a Fair Well defined, stones loose to E of centre, 4.3mavd, 0.5mh, (84/2)
- 173b Fair Boulders protrude from turf, loose in middle, 4.9mavd, 0.3mh, (84/76)
- 173a Fair Orientated N-S, slightly oval, 4.8mavd, 0.3mh, (84/5)
- 173b Poor Ill defined, stones in centre, 3.6mavd, 0.1mh, (84/76)
- 174 Poor Ill defined, scatter of stones, 2.25mavd, 0.2mh, (84/4)
- 175 Poor Ill defined on W, oval, orientated N-S, 4.25mavd, 0.3mh, (84/3)
- 176 Poor Few stones protrude, 3.5mavd, 0.1mh, (84/77)
- 177 Poor few stones protrude, 3.2mavd, 0.1mh, (84/78)
- 178 Fair Well defined, stones protrude in centre, 3.5md, 0.4mh, (84/75)
- 179 Fair Stones protruding, orientated E-W, stone scatter to S side, 8.8mlm, 3.4mw, 0.3mh, (84/79/1/2)
- 180 Poor Ill defined, few stones protrude, 3.8mavd, 0.1mh, (84/241)
- 181 Fair Elliptical, orientated NE-SW, 2.7mavd, 0.15mh, (84/81)
- 182 Poor Ill defined, few stones protrude, 2.4mavd, 0.1mh, (84/80)
- 183 Fair Well defined except on E, 3.0mavd, 0.2mh, (84/82)
- 184 Good Well defined, pear-shaped, 4.75md, 0.25mh, (84/1)
- 185 Poor Ill defined at edges, 3.1mavd, 0.25mh, (84/12)
- 186 Poor Ill defined, some loose stone in centre, 4.2md, 0.3mh, (84/16)
- 187 Fair Many boulders especially on W, vegetation cover greater on E side, 10.0ml, 8.0mw, 0.4mh, (84/17)
- 188 Fair Large boulders protrude from turf cover, one is earthfast, 3.5mavd, 0.4mh, (84/29)
- 189 Fair Loose scatter of large stones, 5.3mavd, 0.5mh, (84/18)
- 190 Fair Loose scatter of large boulders, 4.1ml, 2.7mw, 0.35mh, (84/19)
- 191 Poor Ill defined, few scattered stones, edges ill defined, ?originally round, 4.7ml, 3.0mw, 0.25mh, (84/22)
- 192a Fair Loose scatter of varying sized stones, 2.7mavd, 0.3mh, (84/21)
- 192b Fair Many loose stones, some protrude from turf, 3.7mavd, 0.3mh, (84/26)
- 193 Poor Ill defined, 4.4ml, 2.5mw, 0.3mh, (84/25)
- 194 Poor Partly turf cover, partly loose stones, indistinct kerb, 11.0mavd, 0.6mh, (84/24)
- 195 Poor Elliptical, widest in centre, W end almost same width as centre, E end narrowest, many stones,

- (up to 1.0ml) protruding through vegetation cover, 13.0ml, 7.0mw, 0.4mh, (84/23)
- 196 Poor Ill defined, large boulder protruding, 3.0mavd, 0.4mh, (84/28)
- 197 Poor Pear-shaped, orientated N-S tapering to N, some loose stones, 5.9ml, 4.4mw, 0.3mh, (84/11)
- 199 Fair Large stone to NE of centre, 3.8mavd, 0.3mh, (84/351)
- 200 Poor Ill defined, stones protrude, 3.4mavd, 0.1mh, (84/345)
- 201 Fair Large stones protrude in centre, 3.3mavd, 0.15mh, (84/352)
- 202 Poor Ill defined, scatter of stones protrude, kerb on SW, 3.6mavd, 0.15mh, (84/344)
- 203a Stones protrude, ?associated with (84/347), 1.3mavd, 0.1mh, (84/348)
- 203b Poor Irregular mound with stones protruding, loose at NW end, orientated E-W,, 4.5ml, 0.15mh, (84/347)
- 204a Fair Loose stones, 4.4mavd, 0.3mh, (84/350)
- 204b Poor Irregularly shaped mound, many loose stones, 4.6ml, 0.1mh, (84/349)
- 205 Fair Well defined, stones protrude, 3.1mavd, 0.3mh, (84/343)
- 206 Poor Stones protrude, many loose to S, 2.5mavd, 0.15mh, (84/342)
- 207 Fair Well defined, stones protrude, large stone on E and S, 4.3mavd, 0.3mh, (84/340)
- 208 Poor Ill defined, few stones protrude, 2.0mavd, 0.1mh, (84/341)
- 209 Fair Well defined, few stones protrude, depression in centre, 3.6mavd, 0.15mh, (84/338)
- 210 Fair Well defined, few stones protrude mainly to W, 4.3mavd, 0.3mh, (84/339)
- 211 Poor Few stones protrude, 2.5mavd, 0.15mh, (84/336)
- 212 Poor Loose stones on W, disturbed?, 4.5mavd, 0.15mh, (84/337)
- 213 Poor Ill defined edges, 2.4mavd, 0.25mh, (84/335)
- 214 Fair Ill defined on E, 2.8mavd, 0.2mh, (84/334)
- 215 Fair Stones protrude, 2.2mavd, 0.15mh, (84/332)
- 216a Poor Few stones protrude, 2.0mavd, 0.15mh, (84/329)
- 216b Poor Few stones protrude, larger stone on E, 1.8mavd, 0.1mh, (84/331)
- 216c Poor Ill defined edges, large stone protrudes on W, 1.6mavd, 0.1mh, (84/330)
- 217 Poor few stones protrude, 2.5mavd, 0.15mh, (84/328)
- 218 Poor Few stones protrude, 2.0mavd, 0.1mh, (84/327)
- 219 Poor Scatter of loose stones to E, slight depression in centre, disturbed?, 4.15mavd, 0.15mh, (84/325)
- 220 Fair Few stones protrude, 2.5mavd, 0.25mh, (84/326)
- 221 Poor few stones protrude, 2.3mavd, 0.15mh, (84/333)
- 222a Fair Ill defined edges, stones protrude, two larger stones on S, 2.1mavd, 0.15mh, (84/320)
- 222b Poor Ill defined, few stones protrude, 2.0mavd, 0.1mh, (84/319)
- 223 Poor Ill defined, few small stones protrude, 2.3mavd, 0.1mh, (84/318)
- 224 Poor Ill defined, few small stones protrude, one larger stone to N, 1.8mavd, 0.1mh, (84/321)
- 225 Fair Ill defined, large stones protrude, 2.2mavd, 0.25mh, (84/322)
- 227 Poor Few small stones protrude, 3.5mavd, 0.1mh, (84/316)
- 229 Poor Ill defined, small boulders protrude, some loose, 2.5mavd, 0.1mh, (84/314)
- 230a Poor Ill defined, boulders protruding from turf, group of large loose T70T7 boulders in centre, 8.8ml, 4.3mw, 0.25mh (84/309)
- 230b Poor Very ill defined, a few boulders protruding from turf, 3.2mavd, 0.1mh, (84/310)
- 231 Poor Boulders protrude, 4.0mavd, 0.15mh, (84/313)
- 232a Fair Well defined, boulders protrude, 2.5mavd, 0.2mh, (84/311)
- 232b Poor Ill defined, boulders protrude, depression in centre, 3.9mavd, 0.25mh, (84/312)
- 234 fair Well defined, some loose stones, slight depression in centre, reed growth on E, 6.8mavd, 0.35mh, (84/353)
- 235 Poor Loose stones, 3.5mavd, 0.15mh, (84/354)
- 236 Fair Ill defined, loose stone, no vegetation cover, 2.9mavd, 0.1mh, (84/297)
- 237 Fair Well defined, few stones protrude, 2.7mavd, 0.2mh, (84/298)
- 238 Poor few stones protrude, 3.0mavd, 0.2mh, (84/296)
- 239 Fair Well defined, some stones protrude, 3.1mavd, 0.2mh, (84/295)
- 240 Fair Stones in centre of varying size, 6.1ml, 4.5mw, (84/294)
- 241a Fair Boulders protrude, some loose in centre, 3.8mavd, 0.2mh, (84/293)
- 241b Poor Ill defined, few stones protrude, cairn follows contour of slope, 4.2mavd, 0.1mh, (84/292)
- 242 Poor Boulders protrude, some loose, 2.4mavd, 0.2mh, (84/291)
- 243 Fair Large stones protruding from surface, 4.4ml, 2.1mw, 0.2mh, (84/290)
- 244 Fair Few boulders protrude from turf cover, 2.8mavd, (84/282)

- 245 Fair Few boulders protrude from turf cover, 3.0mavd, 0.2mh, (84/281)
- 246 Fair Many loose boulders at centre, large boulders protrude around edge, 5.5m avd, 0.3mh, (84/300)
- 249a Poor Boulders from surface, 5.5ml, 2.7mw, 0.2mh, (84/287)
- 249b Poor Ill defined, stones protrude especially on E, 3.3mavd, 0.1mh, (84/286)
- 250a Good Well defined, many stones protrude, 4.0mavd, 0.15mh, (84/285)
- 250b Poor Ill defined, few stones protrude, 4.2md, (84/284)
- 251 Fair Boulders protrude, 4.0mavd, 0.3mh, (84/283)
- 252 Fair Boulders protrude from turf cover, some loose, 4.0mavd, 0.1mh, (84/280)
- 253 Fair Boulders protrude, soloose, 3.5mavd, 0.1mh, (84/279)
- 255 Fair ?kerb, disturbed centre, 3.6mavd, 0.1mh, (84/288)
- 256 Fair Well defined, many stones protruding from surface, 4.8ml, 2.8mw, 0.3mh (84/289)
- 257 Fair Depression in centre, large stone to W, reed growth on E, 4.8mavd, 0.1mh, (84/277)
- 258 Fair Boulders protrude, one very large boulder (1.0mx1.04m), ?cut, 3.7mavd, 0.15mh, (84/276)
- 259 Poor Many boulders protrude, some loose, centredepressed, 5.7mavd, 0.1mh, (84/275)
- 260 Fair Boulders protrude, some loose, 3.7mavd, 0.15mh, (84/259)
- 261 Fair Few boulders protrude, 3.0mavd, 0.15mh, (84/260)
- 262 Fair Boulders protrude from turf cover, 3.8mavd, 0.2mh, (84/258)
- 263 Fair Boulders protrude from turf, 3.7mavd, 0.2mh, (84/255)
- 264 Poor Few boulders protrude on W side, 2.6mavd, 0.15mh, (84/254)
- 265 Fair Well defined, boulders protrude from turf cover, 4.0mavd, 0.25mh, (84/256)
- 266 Fair Well defined, boulders protrude, 4.1mavd, 0.15mh, (84/257)
- 267 Poor Ill defined, scatter of boulders protruding from turf cover, 3.0mavd, 0.1mh, (84/261)
- 268 Poor Ill defined, boulders protrude from turf, 3.0mavd, 0.15mh, (84/262)
- 269 Poor Ill defined, boulders protrude from turf, 5.0mavd, 0.1mh, (84/253) T7kT7
- 271a Fair Well defined, boulders protrude from turf cover, 3.7mavd, 0.15mh, (84/264)
- 271b Poor Ill defined, spread of loose and earthfast boulders, some large, some boulders lie to W of cairn, 4.0mavd, 0.1mh, (84/263)
- 272 Poor Irregular spread of boulders protruding from turf, many loose, depression in centre, disturbed?, 5.3mavd, 0.1mh, (84/273)
- 277 Fair Boulders protrude, some loose especially on E, 2.9mavd, 0.15mh, (84/249)
- 278 Fair Few small boulders protrude in centre, 2.6mavd, 0.1mh, (84/250)
- 279 Fair Few boulders protrude, 3.0mavd, 0.2mh, (84/245)
- 280 Poor Ill defined, boulders protrude, 3.2mavd, 0.1mh, (84/246)
- 281 Fair Boulders protrude, 3.2mavd, 0.25mh (84/247)
- 282 Fair Boulders protrude, some loose, centre has vegetation cover only, disturbed?, 3.3mavd, 0.1mh, (84/248)
- 283 Fair Boulders protrude, 3.0mavd, 0.2mh, (84/271)
- 284a Fair Well defined, boulder spread protruding from turf cover, 3.7mavd, 0.3mh, (84/272)
- 284b Poor few boulders protrude from turf, 2.2mavd, 0.05mh, (84/299)
- 285 Fair Boulders protrude from turf, two slight depressions to NW and SW, disturbed?, 3.6mavd, 0.15mh, (84/265)
- 286 Poor Ill defined, spread of boulders protruding from turf, 3.8mavd, 0.2mh, (84/266)
- 287 Fair Well defined, boulders protrude from turf, loose in centre, 4.1mavd, 0.2mh, (84/269)
- 289 Poor Ill defined, spread of boulders, many loose, 6.0mavd, (84/268)
- 290 Fair Small boulders protruding, larger stones on E and SE, ?remains of a kerb, 3.8mavd, 0.2mh, (84/270)
- 291 Good Well defined, boulders protrude from turf cover, 5.4mavd, 0.4mh, (84/185)
- 292 Fair Boulders protrude from turf, some loose, 5.0mavd, 0.3mh, (84/184)
- 293 Fair Well defined, mound larger at E end than W, boulders protrude from turf cover, 8.9ml, 4.8mw, 0.45mh, (84/183)
- 294 Fair Well defined, boulders spread protruding from turf cover, 4.6mavd, 0.35mh, (84/182)
- 295 Fair Spread of boulders protruding from turf cover, loose in centre, 4.3mavd, 0.3mh, (84/181)
- 296 Poor Ill defined, small boulders protruding from turf cover, 3.1mavd, 0.2mh, (84/180)
- 297 Poor Ill defined, boulders spread protruding from turf cover, 5.3mavd, 0.15mh (84/179)
- 324 Fair Well defined, stones protrude, large stone to N, 3.2mavd, 0.2mh, (84/323)

Details of Walls

No Cond Description

120 Fair Stone scatter, orientated E-W, 24.0ml, 2.0mw, 0.2mh, (84/70)
 126 Poor Stones protrude, definition not clear, ?wall/structure, 1.1mavw, 0.2mh, (84/85)
 185 Poor Orientated NE-SW, stone scatter on NW, 18.1ml, 0.2mh, (84/13)
 192 Poor Loose scatter of varying sized stones, middle curves to SWW, SW side semi-circular, 13.4m E-W, 2.3m N-S, 0.3mh, (84/20)
 198a Fair Bank with stones protruding, course slightly curved, ?upcast from drainage ditch, 1.5mavw, 0.2mh, (84/27)
 198b Fair ?associated with (84/27), 1.5mw, 0.15mh, 884/346)
 226 Fair L-shaped, boulders protruding, 5.4m along long axis, 3.4m along short, 1.2mw, 0.1mh, (84/317)
 228 Poor Ill defined, boulders protrude, fewer at NW end, 9.8ml, 2.8mw, T7&T7 0.1mh, (84/315)
 247 Poor Ill defined, scatter of boulders, loose at NW end, 9.0ml, 2.0mw, 0.15mh, (84/301)
 248 Poor Ill defined, scatter of boulders, loose at NWW end, 24.4ml, 2.0mavw, (84/302)
 254 Poor Ill defined, scatter of boulders, one large (1.5m x 1.0m x 0.6m) earthfast at W end, 12.7ml, 2.5mavw, 0.25mh, (84/278)
 270 Fair Boulders protrude from turf mound, orientated E-W, 11.7ml, 1.8mw, 0.2mh, (84/274)
 273a Poor Ill defined, scatter of boulders, 13.8ml, 2.5mavw, 0.1mh, (84/251)
 273b Poor Scatter of boulders, ?continuation of (84/251), orientated NEE-WWS, 4.7ml, 2.5mw, 0.1mh, (84/252)
 274 Poor Crescent-shaped line of boulders, 1.0mavw, 0.1mh, (84/244)
 275 Poor Crescent-shaped boulder scatter, 4.0mavw, 0.1mh, (84/243)
 276 Poor Ill defined, crescent-shaped line of boulders, 1.0mw, 0.1mh, (84/242)
 288 Poor Ill defined spread of boulders, orientated WNW-ESE, 17.0ml, 2.0mw, 0.15mh, (84/267)

Details of Lynchets

No Cond Descriptor

153 NW side marked by boulder spread and break of slope, fall is to the N, 2.2mw, 0.4mh, (84/37)
 163 Fair Boulders spread, lynchets more probable than separate cairns, 2.5mw, 0.5mh, (84/31)
 233 Poor Ill defined, runs ENE-WSW, stones protruding, crossed by tractor tracks, 17.0ml, 2mw, 0.2mh, (84/324)

TYPE/PERIOD-GEN/PERIOD-SPEC/FORM = Cairnfield/Unknown//Other structure; Walls/Unknown//Other structure

CLAU SURVEY NO. = 120-297 & 324

ARCH HISTORY = Full survey/Lancaster University/1984

VISITS = Leech, R H., CLAU/ 4-1984

SOURCES =

<1> Map/1:10560/OS/1897/Cumberland
 <2> Desc Text/Trans Cw2 23 (1923), p.267
 <3> Survey records/OS//1973/SD 19 SW 6
 <4> Desc text//Fell, C/1972/Early settlement in the Lake Counties/p.66
 <5> Survey records/CLAU/various/1984

AREA STATUS = NP;COL

DATE OF COMP. OR UPDATE = Leech, R H., CLAU/ 4-1984

8788

Cumbria

SITE NAME = Buckbarrow Beck West, Corney Fell
 LOCAL AUTHORITY = Copeland PARISH = Waberthwaite
 NGR = SD 131906 HEIGHT OD = 200m-250m
 1:10000 PLAN = SD19SW
 DESCRIPTION =
 PRN 8788

Details of Cairns

305 Poor Low mound with stones protruding, some loose, orientated N-S, 7.2ml, 2.6mw, 0.2mh (84/372)
 307a 0.25mh, (84/370)
 307b Fair Loosely piled stones, definite kerb, wall leads to S from cairn 4.5mavd,
 308 Fair Loosely piled stones, 4.8mavd, 0.25mh, (84/366) T7aT7
 310a Fair Ill defined, some stones protrude, 3.9mavd, 0.2mh, ((84/374)
 310b Poor Irregular shape, 2.8mavd, 0.15mh, (84/376)
 310c Poor Irregular shaped, few stones protrude, 3.5mavd, 0.15mh, (84/375)

311a Fair Loosely piled stones, 4.2mavd, 0.25mh, (84/364)
 311b Poor Irregular shaped, stones protrude, 3.3mavd, 0.1mh, (84/365)
 312 Fair Loosely piled stones, 5.3mavd, 0.2mh, (84/367)
 314 Poor Ill defined, stones protrude, large stone to W side, orientated NNW-SSE, 6.6ml, 2.0mw, 0.25mh, (84/378)
 315 Fair Some loose stone, orientated NNE-SSW, 7.5ml, 3.0mw, 0.2mh, (84/379)
 316 Fair Stones protrude, 3.4mavd, 0.5mh, (84/359)
 317 Poor Loose stones in centre, 4.5mavd, 0.1mh, (84/358)
 318 Poor Ill defined edges, stones protrude, some loose, 4.8mavd, 0.1mh (84/357)
 319 Poor Ill defined edges, stones protrude, some loose, 4.8mavd, 0.1mh, (84/356)
 320a Ill defined edges, stones protrude, orientated ESE-WNW, 14.0ml, 5.0mw, 0.2mh, (84/360)
 320b Poor Possibly a wall, few stones protrude, runs ESE-WNW, 14.0ml, 5.0mw, 0.2mh, (84/360)
 321 Poor Stones protrude, depression in centre, 5.8mavd, 0.1mh, (84/363)
 322 Fair Well defined, stones protrude, 5.3mavd, 0.25mh, (84/361)
 323 Poor Flat slight mound, ?kerb, 5.7mavd, 0.1mh, (84/362)

Details of Walls

No Cond Description

304 Poor Low mound with occasional stones protruding, ill defined, some runs NE-SW, 9.8ml, 1.8mw, 0.1mh, (84/373)
 307 Fair Length of wall between round cairns (see also 9 Round Cairns), wall leads to S from cairn, turns at angle of 90 degrees to E, ?continuation of (84/369), 4.5mavd, 0.25mh, (84/370)
 309 Fair Loose stones, T-shaped, stones loose along long axis, 8.0ml, 4.0mw along NW-SE axis, 4.4ml, 1.5mw, along NE-SW axis, 0.35mh, (84/377)
 313 Poor Crescent shaped wall of loosely piled stones, 7.9ml, 2mw, (84/368)

Details of Enclosures

No Cond Description

303 Fair Circular enclosure, walls of loosely piled stones, entrance to SW, 4.5mavd external, 2.2mavd internal, 0.35mh, (84/355)
 307 Fair Turns at right angles, ?entrance with small upright stone 0.6m high, walls 3mw, 0.3mh, (84/369)

TYPE/PERIOD-GEN/PERIOD-SPEC/FORM = Cairnfield/Unknown//Other structure; Walls/Unknown//Other structure
 CLAU SURVEY NO. = 303-323

ARCH HISTORY = Full survey/Lancaster University/1984

VISITS = Leech, R. H., CLAU/ 4-1984

SOURCES =

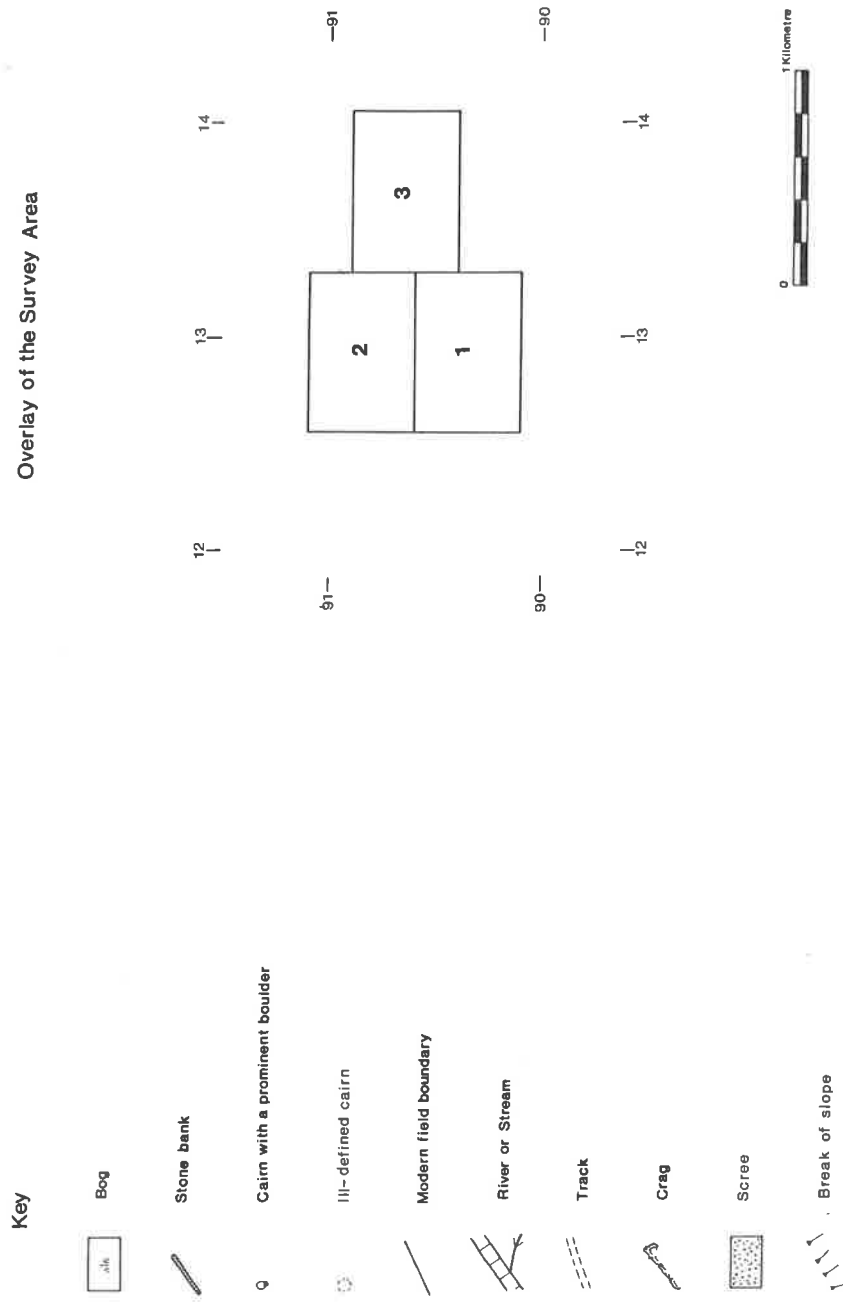
<1> Map/1:10560/OS/1897/Cumberland
 <2> Desc Text/Trans Cw2 23 (1923), p.267
 <3> Survey records/OS//1973/SD 19 SW 6
 <4> Desc text//Fell, C/1972/Early settlement in the Lake Counties/p.66
 <5> Survey records/CLAU/various/1984

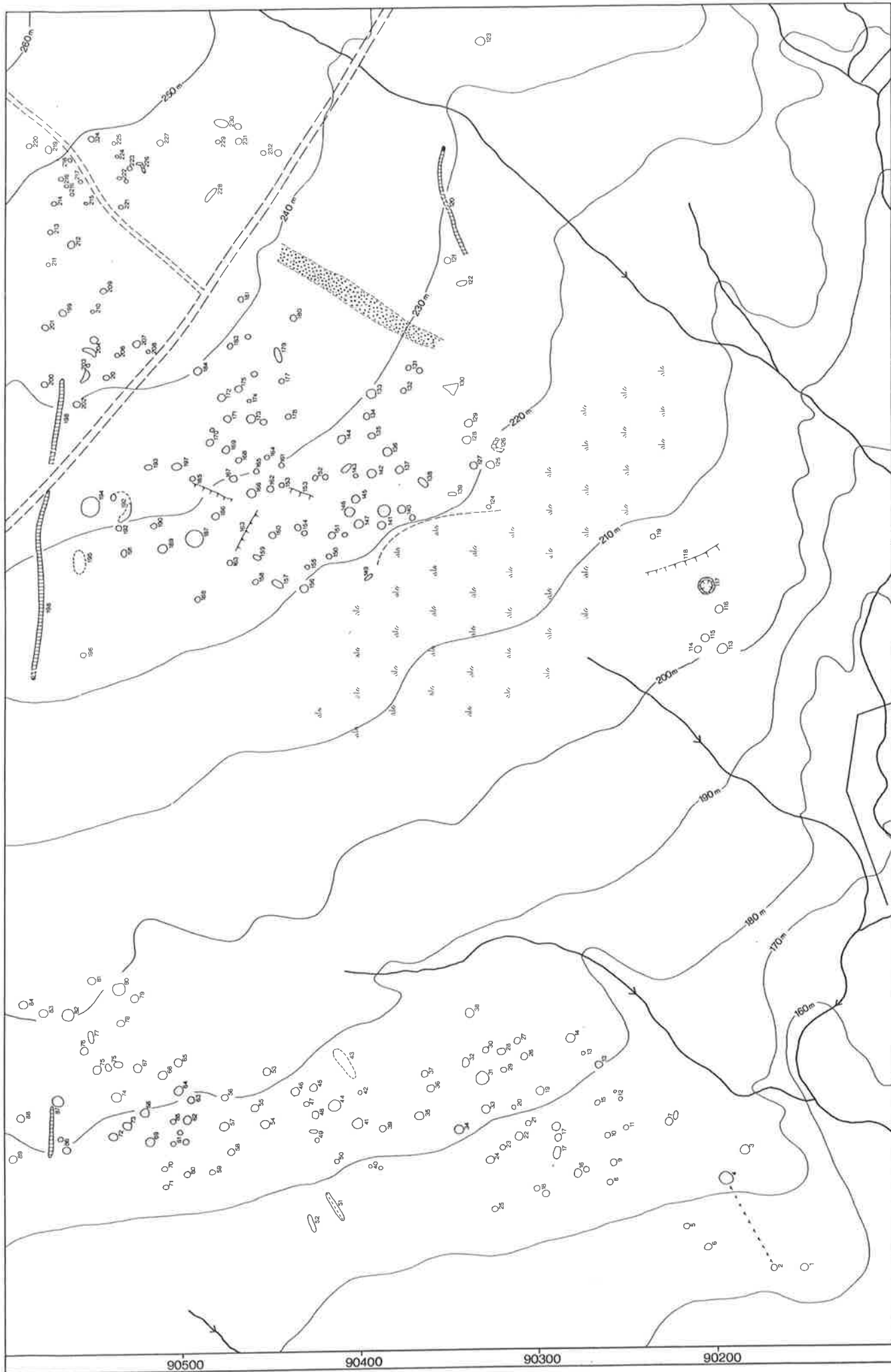
AREA STATUS = NP;COL



DATE OF COMP. OR UPDATE = Leech, R.H., CLAU/ 4-1984

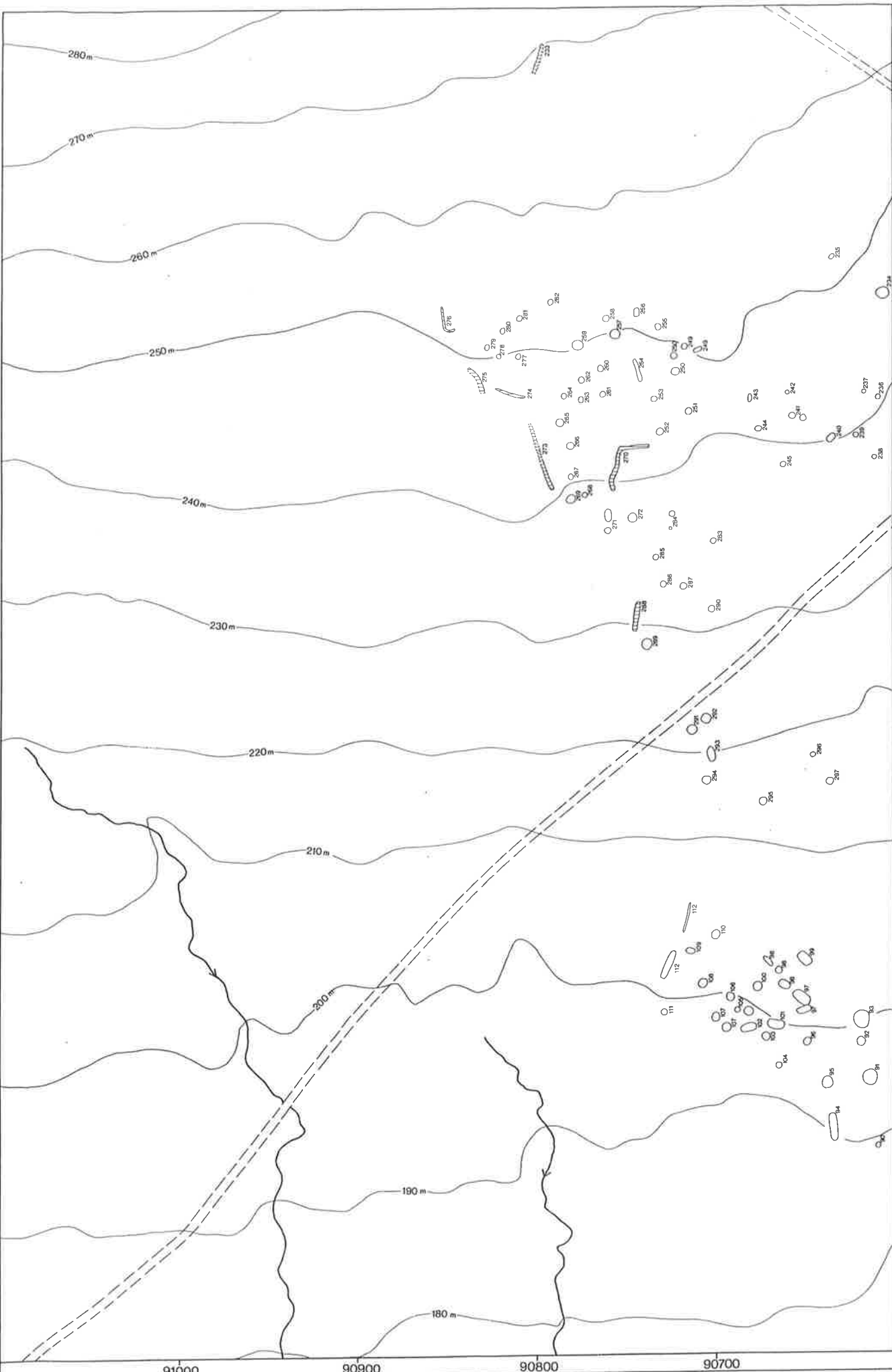
CORNEY FELL SURVEY 1984

Overlay of the Survey Area

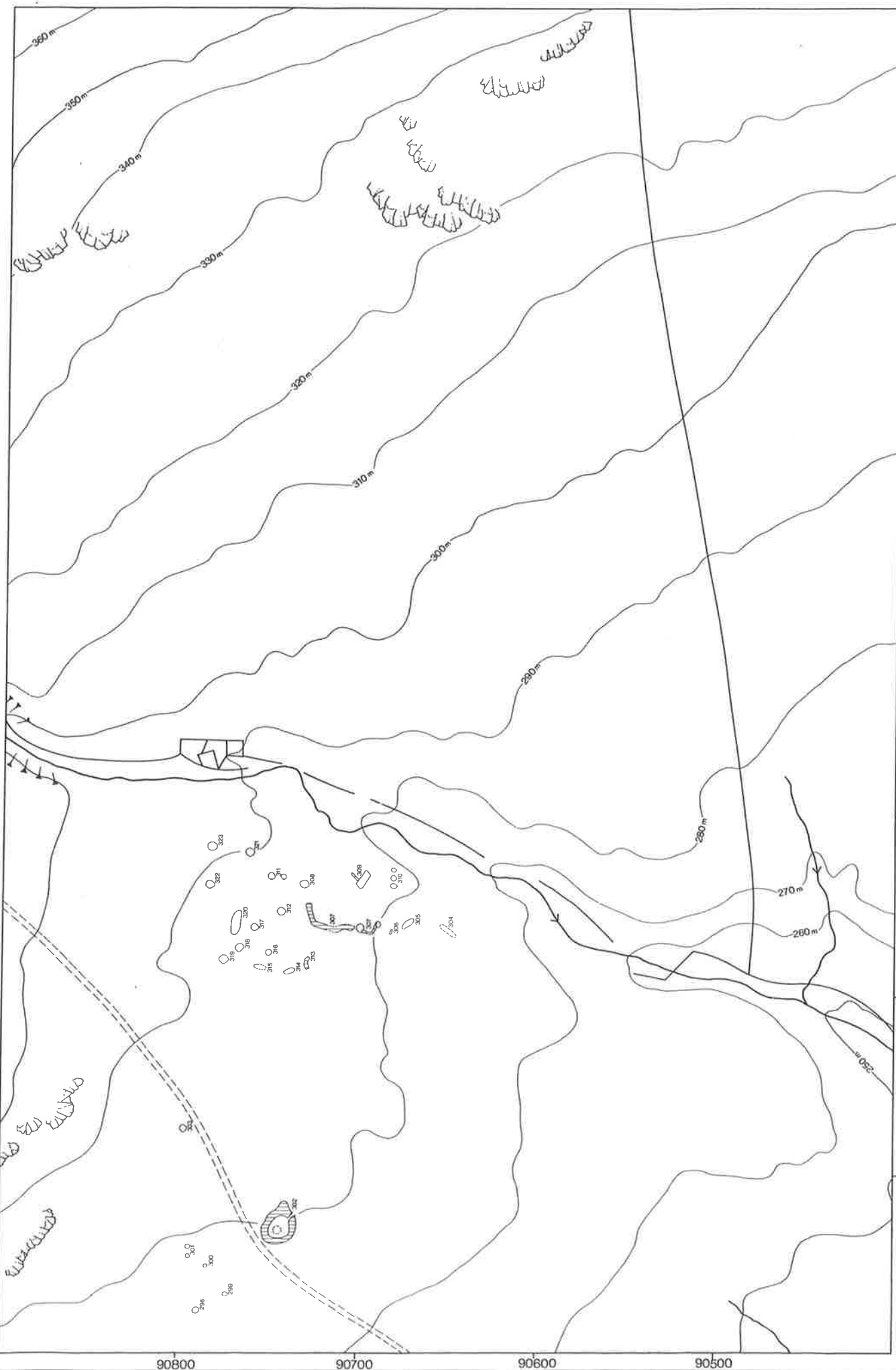




LDNPS CORNEY FELL	PLAN NAME High Kimmont Beck	COMMENTS Topographical detail based upon the 1977 Ordnance Survey 1:10,000 map with the permission of the Controller of Her Majesty's Stationery Office. Crown copyright reserved.	13200
		 	13100
		DRAWN BY JGS RHL	13000
		DATE 4-1984	12900
		SCALE 1:1000	12800
		SITE CODE	12700
		SHEET No. 1	12600



12600	12700	12800	12900	13000	13100	13200
LDNPS CORNEY FELL			High Kimmont Beck			
<p>COMMENTS Topographical detail based upon the Ordnance Survey map of 1962, with the permission of the Controller of Her Majesty's Stationery Office. Crown copyright reserved.</p>						
PLAN NAME			DRAWN BY			
JGS			RHL			
SCALE			DATE			
1:1000			4 - 1984			
SITE CODE			CUMBRIA AND LANCASHIRE ARCHAEOLOGICAL UNIT, UNIVERSITY OF LANCASTER			
SHEET No			2			



LDNPS	13400	13500	13600	13700	13800	13900	14000
CORNEY FELL	PLAN NAME						Buckbarrow Beck
	COMMENTS						Topographical detail based upon the 1977 Ordnance Survey map, OS 1000, with the permission of the Controller of Her Majesty's Stationery Office. Crown copyright reserved.
	DRAWN BY						JGS RHL
	DATE						4-1984
	SCALE						1:1000
	SITE CODE						
	SHEET No.						3
CUMBRIA AND LANCASHIRE ARCHAEOLOGICAL UNIT, UNIVERSITY OF LANCASTER							