



## Scottish Universities Environmental Research Centre

Director: Professor A B MacKenzie Director of Research: Professor R M Ellam

Rankine Avenue, Scottish Enterprise Technology Park,  
East Kilbride, Glasgow G75 0QF, Scotland, UK

Tel: +44 (0)1355 223332 Fax: +44 (0)1355 229898 [www.glasgow.ac.uk/suerc](http://www.glasgow.ac.uk/suerc)

### RADIOCARBON DATING CERTIFICATE

20 March 2012

**Laboratory Code** SUERC-38920 (GU26628)

**Submitter** Rebecca Nicholson  
Oxford Archaeology South  
Janus House  
Osney Mead  
Oxford OX2 0ES

**Site Reference** CAFLS11  
**Context Reference** BH1  
**Sample Reference** 11

**Material** Waterlogged Plant Macrofossil : Monocot stem/leaf

**$\delta^{13}\text{C}$  relative to VPDB** -26.3 ‰

**Radiocarbon Age BP** 9065  $\pm$  35

**N.B.** The above  $^{14}\text{C}$  age is quoted in conventional years BP (before 1950 AD). The error, which is expressed at the one sigma level of confidence, includes components from the counting statistics on the sample, modern reference standards, background standards and the random machine error.

The calibrated age ranges are determined using the University of Oxford Radiocarbon Accelerator Unit calibration program OxCal 4.1 (Bronk Ramsey 2009). Terrestrial samples are calibrated using the IntCal09 curve while marine samples are calibrated using the Marine09 curve.

Samples with a SUERC coding are measured at the Scottish Universities Environmental Research Centre AMS Facility and should be quoted as such in any reports within the scientific literature. Any questions directed to the Radiocarbon Laboratory should also quote the GU coding given in parentheses after the SUERC code. The contact details for the laboratory are email [g.cook@suerc.gla.ac.uk](mailto:g.cook@suerc.gla.ac.uk) or Telephone 01355 270136 direct line.

Conventional age and calibration age ranges calculated by :-

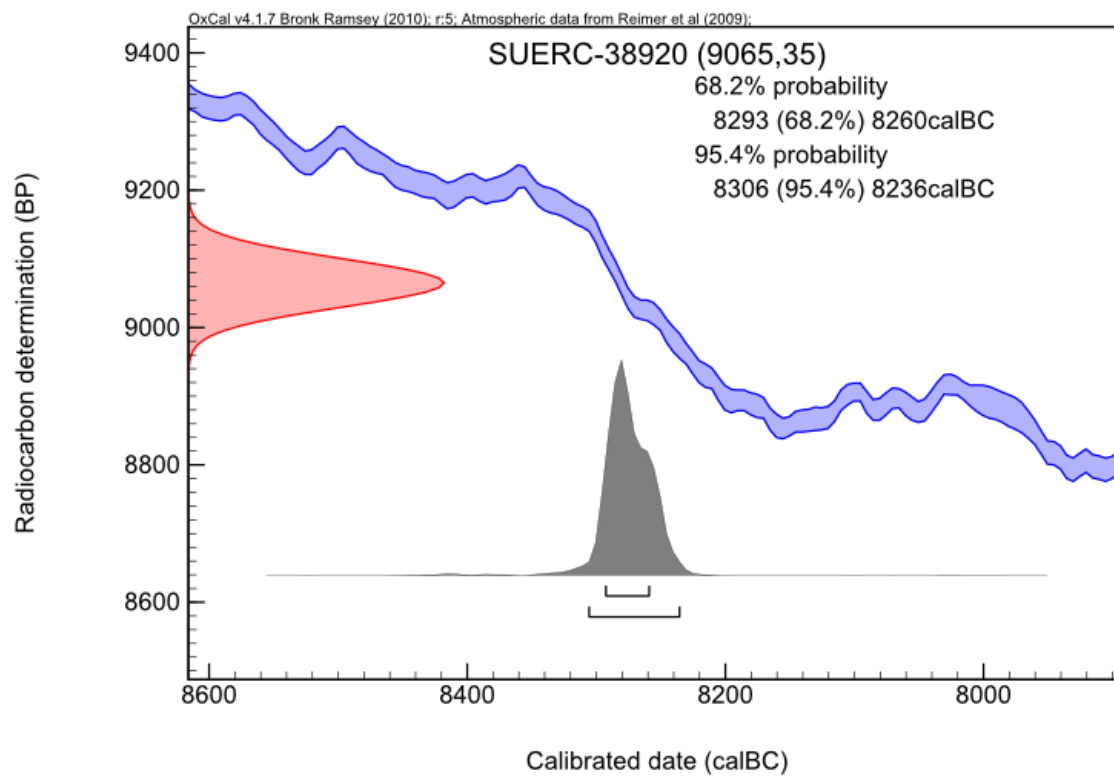
Date :-

Checked and signed off by :-

Date :-



# Calibration Plot





## Scottish Universities Environmental Research Centre

Director: Professor A B MacKenzie Director of Research: Professor R M Ellam

Rankine Avenue, Scottish Enterprise Technology Park,  
East Kilbride, Glasgow G75 0QF, Scotland, UK

Tel: +44 (0)1355 223332 Fax: +44 (0)1355 229898 [www.glasgow.ac.uk/suerc](http://www.glasgow.ac.uk/suerc)

### RADIOCARBON DATING CERTIFICATE

20 March 2012

**Laboratory Code** SUERC-38921 (GU26629)

**Submitter** Rebecca Nicholson  
Oxford Archaeology South  
Janus House  
Osney Mead  
Oxford OX2 0ES

**Site Reference** CAFLS11  
**Context Reference** BH1  
**Sample Reference** 12

**Material** Waterlogged Plant Macrofossil : Sedge (*Carex* sp.) and bogbean (*Menyanthes trifoliata*) nutlets

**$\delta^{13}\text{C}$  relative to VPDB** -25.9 ‰

**Radiocarbon Age BP** 10030  $\pm$  35

**N.B.** The above  $^{14}\text{C}$  age is quoted in conventional years BP (before 1950 AD). The error, which is expressed at the one sigma level of confidence, includes components from the counting statistics on the sample, modern reference standards, background standards and the random machine error.

The calibrated age ranges are determined using the University of Oxford Radiocarbon Accelerator Unit calibration program OxCal 4.1 (Bronk Ramsey 2009). Terrestrial samples are calibrated using the IntCal09 curve while marine samples are calibrated using the Marine09 curve.

Samples with a SUERC coding are measured at the Scottish Universities Environmental Research Centre AMS Facility and should be quoted as such in any reports within the scientific literature. Any questions directed to the Radiocarbon Laboratory should also quote the GU coding given in parentheses after the SUERC code. The contact details for the laboratory are email [g.cook@suerc.gla.ac.uk](mailto:g.cook@suerc.gla.ac.uk) or Telephone 01355 270136 direct line.

Conventional age and calibration age ranges calculated by :-

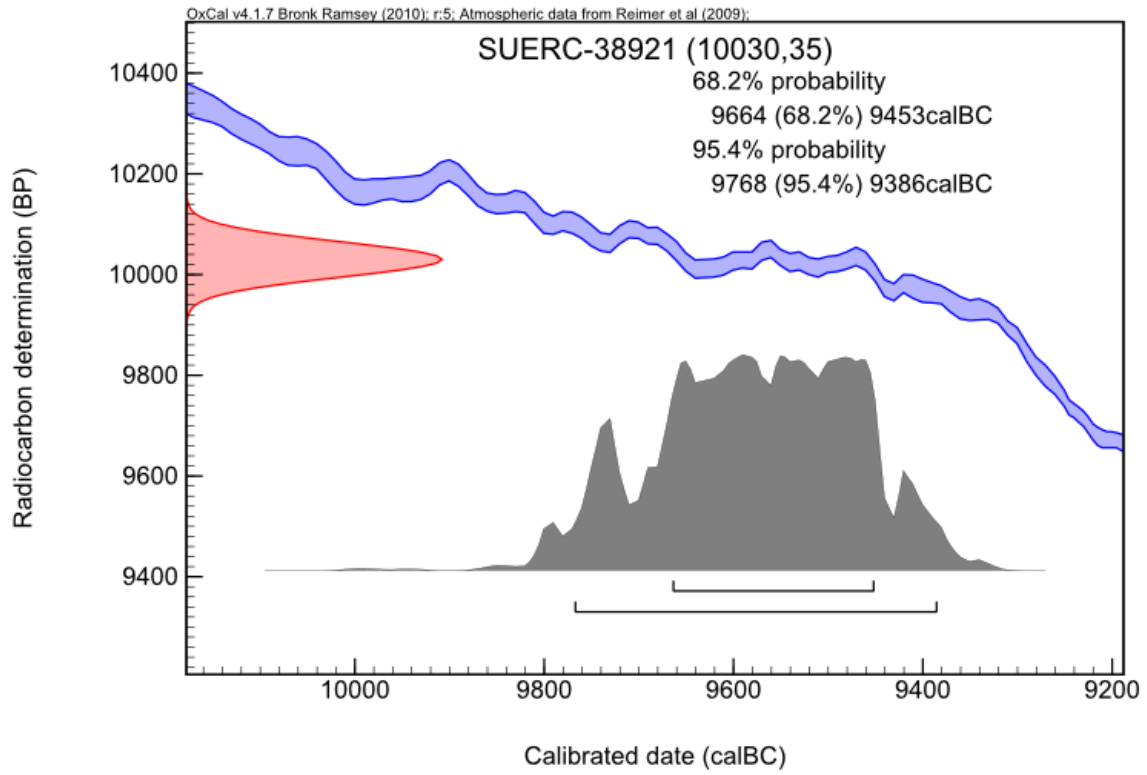
Date :-

Checked and signed off by :-

Date :-



# Calibration Plot





## Scottish Universities Environmental Research Centre

Director: Professor A B MacKenzie Director of Research: Professor R M Ellam

Rankine Avenue, Scottish Enterprise Technology Park,  
East Kilbride, Glasgow G75 0QF, Scotland, UK

Tel: +44 (0)1355 223332 Fax: +44 (0)1355 229898 [www.glasgow.ac.uk/suerc](http://www.glasgow.ac.uk/suerc)

### RADIOCARBON DATING CERTIFICATE

20 March 2012

**Laboratory Code** SUERC-38922 (GU26630)

**Submitter** Rebecca Nicholson  
Oxford Archaeology South  
Janus House  
Osney Mead  
Oxford OX2 0ES

**Site Reference** CAFLS11  
**Context Reference** BH4  
**Sample Reference** 3

**Material** Waterlogged Plant Macrofossil : Monocot leaf/stem

**$\delta^{13}\text{C}$  relative to VPDB** -25.3 ‰

**Radiocarbon Age BP** 1700  $\pm$  30

**N.B.** The above  $^{14}\text{C}$  age is quoted in conventional years BP (before 1950 AD). The error, which is expressed at the one sigma level of confidence, includes components from the counting statistics on the sample, modern reference standards, background standards and the random machine error.

The calibrated age ranges are determined using the University of Oxford Radiocarbon Accelerator Unit calibration program OxCal 4.1 (Bronk Ramsey 2009). Terrestrial samples are calibrated using the IntCal09 curve while marine samples are calibrated using the Marine09 curve.

Samples with a SUERC coding are measured at the Scottish Universities Environmental Research Centre AMS Facility and should be quoted as such in any reports within the scientific literature. Any questions directed to the Radiocarbon Laboratory should also quote the GU coding given in parentheses after the SUERC code. The contact details for the laboratory are email [g.cook@suerc.gla.ac.uk](mailto:g.cook@suerc.gla.ac.uk) or Telephone 01355 270136 direct line.

Conventional age and calibration age ranges calculated by :-

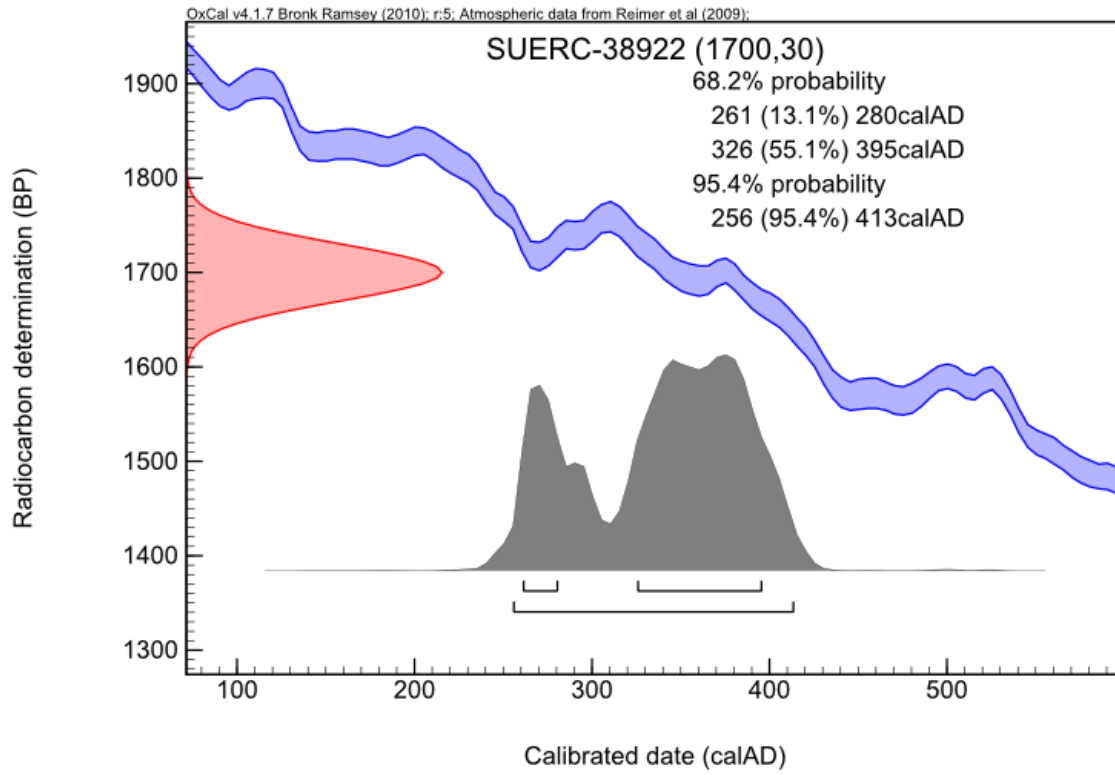
Date :-

Checked and signed off by :-

Date :-



# Calibration Plot





## Scottish Universities Environmental Research Centre

Director: Professor A B MacKenzie Director of Research: Professor R M Ellam

Rankine Avenue, Scottish Enterprise Technology Park,  
East Kilbride, Glasgow G75 0QF, Scotland, UK

Tel: +44 (0)1355 223332 Fax: +44 (0)1355 229898 [www.glasgow.ac.uk/suerc](http://www.glasgow.ac.uk/suerc)

### RADIOCARBON DATING CERTIFICATE

20 March 2012

**Laboratory Code** SUERC-38923 (GU26631)

**Submitter** Rebecca Nicholson  
Oxford Archaeology South  
Janus House  
Osney Mead  
Oxford OX2 0ES

**Site Reference** CAFLS11  
**Context Reference** BH4  
**Sample Reference** 6

**Material** Waterlogged Plant Macrofossil : Sedge (*Carex* sp.), bogbean  
(*Menyanthes trifoliata*) nutlets, Cf. *Schoenoplectus* sp (club rush)

**$\delta^{13}\text{C}$  relative to VPDB** -25.0 ‰ assumed

**Radiocarbon Age BP** 3810  $\pm$  30

**N.B.** The above  $^{14}\text{C}$  age is quoted in conventional years BP (before 1950 AD). The error, which is expressed at the one sigma level of confidence, includes components from the counting statistics on the sample, modern reference standards, background standards and the random machine error.

The calibrated age ranges are determined using the University of Oxford Radiocarbon Accelerator Unit calibration program OxCal 4.1 (Bronk Ramsey 2009). Terrestrial samples are calibrated using the IntCal09 curve while marine samples are calibrated using the Marine09 curve.

Samples with a SUERC coding are measured at the Scottish Universities Environmental Research Centre AMS Facility and should be quoted as such in any reports within the scientific literature. Any questions directed to the Radiocarbon Laboratory should also quote the GU coding given in parentheses after the SUERC code. The contact details for the laboratory are email [g.cook@suerc.gla.ac.uk](mailto:g.cook@suerc.gla.ac.uk) or Telephone 01355 270136 direct line.

Conventional age and calibration age ranges calculated by :-

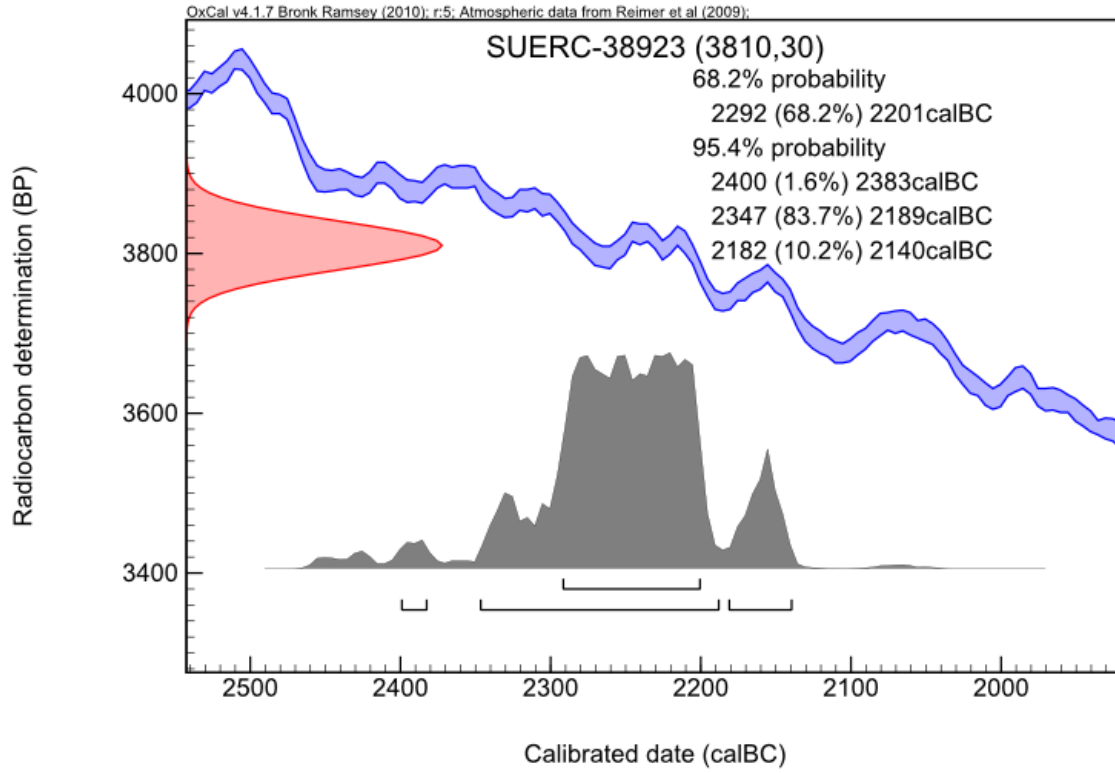
Date :-

Checked and signed off by :-

Date :-



# Calibration Plot







## Scottish Universities Environmental Research Centre

Director: Professor A B MacKenzie Director of Research: Professor R M Ellam

Rankine Avenue, Scottish Enterprise Technology Park,  
East Kilbride, Glasgow G75 0QF, Scotland, UK

Tel: +44 (0)1355 223332 Fax: +44 (0)1355 229898 [www.glasgow.ac.uk/suerc](http://www.glasgow.ac.uk/suerc)

### RADIOCARBON DATING CERTIFICATE

20 March 2012

**Laboratory Code** SUERC-38924 (GU26632)

**Submitter** Rebecca Nicholson  
Oxford Archaeology South  
Janus House  
Osney Mead  
Oxford OX2 0ES

**Site Reference** CAFLS11  
**Context Reference** BH5  
**Sample Reference** 14

**Material** Waterlogged Plant Macrofossil : Monocot leaf/stem

**$\delta^{13}\text{C}$  relative to VPDB** -26.4 ‰

**Radiocarbon Age BP** 1620  $\pm$  30

**N.B.** The above  $^{14}\text{C}$  age is quoted in conventional years BP (before 1950 AD). The error, which is expressed at the one sigma level of confidence, includes components from the counting statistics on the sample, modern reference standards, background standards and the random machine error.

The calibrated age ranges are determined using the University of Oxford Radiocarbon Accelerator Unit calibration program OxCal 4.1 (Bronk Ramsey 2009). Terrestrial samples are calibrated using the IntCal09 curve while marine samples are calibrated using the Marine09 curve.

Samples with a SUERC coding are measured at the Scottish Universities Environmental Research Centre AMS Facility and should be quoted as such in any reports within the scientific literature. Any questions directed to the Radiocarbon Laboratory should also quote the GU coding given in parentheses after the SUERC code. The contact details for the laboratory are email [g.cook@suerc.gla.ac.uk](mailto:g.cook@suerc.gla.ac.uk) or Telephone 01355 270136 direct line.

Conventional age and calibration age ranges calculated by :-

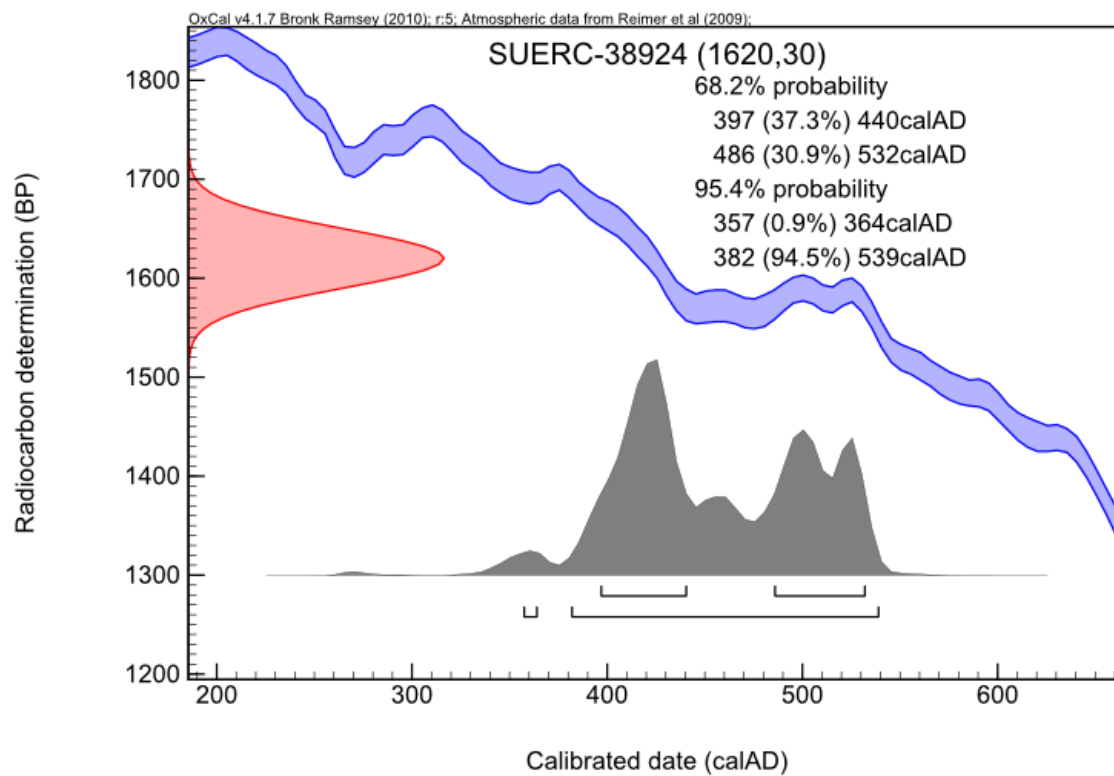
Date :-

Checked and signed off by :-

Date :-



# Calibration Plot





## Scottish Universities Environmental Research Centre

Director: Professor A B MacKenzie Director of Research: Professor R M Ellam

Rankine Avenue, Scottish Enterprise Technology Park,  
East Kilbride, Glasgow G75 0QF, Scotland, UK

Tel: +44 (0)1355 223332 Fax: +44 (0)1355 229898 [www.glasgow.ac.uk/suerc](http://www.glasgow.ac.uk/suerc)

### RADIOCARBON DATING CERTIFICATE

20 March 2012

**Laboratory Code** SUERC-38925 (GU26633)

**Submitter** Rebecca Nicholson  
Oxford Archaeology South  
Janus House  
Osney Mead  
Oxford OX2 0ES

**Site Reference** CAFLS11  
**Context Reference** BH5  
**Sample Reference** 16

**Material** Waterlogged Plant Macrofossil : Alder (*Alnus* sp.) seeds and cone frag  
 **$\delta^{13}\text{C}$  relative to VPDB** -25.6 ‰

**Radiocarbon Age BP** 3640  $\pm$  30

**N.B.** The above  $^{14}\text{C}$  age is quoted in conventional years BP (before 1950 AD). The error, which is expressed at the one sigma level of confidence, includes components from the counting statistics on the sample, modern reference standards, background standards and the random machine error.

The calibrated age ranges are determined using the University of Oxford Radiocarbon Accelerator Unit calibration program OxCal 4.1 (Bronk Ramsey 2009). Terrestrial samples are calibrated using the IntCal09 curve while marine samples are calibrated using the Marine09 curve.

Samples with a SUERC coding are measured at the Scottish Universities Environmental Research Centre AMS Facility and should be quoted as such in any reports within the scientific literature. Any questions directed to the Radiocarbon Laboratory should also quote the GU coding given in parentheses after the SUERC code. The contact details for the laboratory are email [g.cook@suerc.gla.ac.uk](mailto:g.cook@suerc.gla.ac.uk) or Telephone 01355 270136 direct line.

Conventional age and calibration age ranges calculated by :-

Date :-

Checked and signed off by :-

Date :-



# Calibration Plot

