

evidence must hold out some hope. The quality and quantity of data for settlement patterns in some parts of the valley are such that careful analysis of the interrelationships of sites, in terms of physical movement from one to another through the landscape and their other characteristics revealed

through structural, environmental and artefactual analysis, might begin to reveal how they worked together at subregional level. Such analyses will not necessarily provide a clear resolution of patterns of tenure, but should help considerably in consideration of such questions.

Appendix

THE ANGLO-SAXON CEMETERIES OF THE THAMES VALLEY

A considerable number of larger and smaller cemeteries of certain, probable or possible Anglo-Saxon date have been discovered in the Thames Valley region. These range, however, from sites fully excavated under modern conditions, to those represented by no more than a note of the chance discovery of skeletons and objects that no longer survive and for which there is therefore no certainty of an Anglo-Saxon date. All sites known at the time were investigated and catalogued by Tania Dickinson for her University of Oxford doctoral thesis, submitted in 1976. We are most grateful to Dr Dickinson for allowing us to reproduce a summary table of her catalogue in the present volume, together with the accompanying

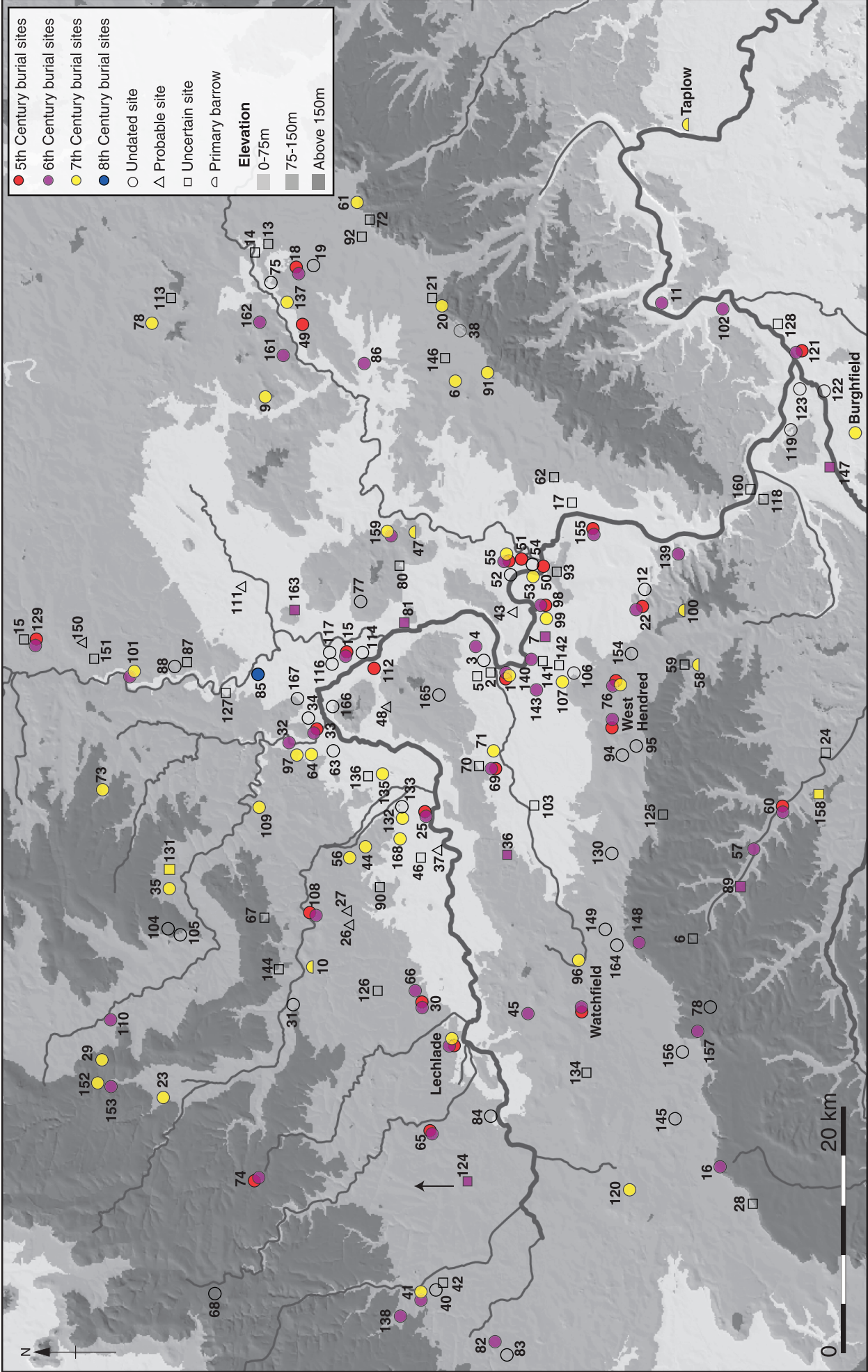
map showing the site locations. Sites listed in the table that have been discovered since 1976, or that lie outside Dr Dickinson's study area, have been added by the present authors. The map shows sites within the Upper Thames Valley region only, which represent the great majority; the locations of the few additional sites known within the Middle Thames Valley can be found on Figure 3.19. Within the scope of the present project, we have been able to take account only of the cemeteries listed by Tania Dickinson, and major sites published subsequently. Numerous further possible sites are coming to light all the time, particularly through the reporting of new finds. Readers are referred to the Portable Antiquities Scheme and to the county Sites and Monuments Records for current information.

Notes to the table

- * Cemeteries numbered in the table and on the map were catalogued by Tania Dickinson, and her catalogue numbers are used here. Cemeteries without numbers were not included in her original catalogue, being outside her study area, or more recent discoveries.
- ** Dating is given as suggested by Tania Dickinson in 1976, or by the authors of the published reports for sites not included in her survey. Readers are advised that the dating of individual graves may have been subject to subsequent revision as the chronologies of artefacts and decorative styles have been reviewed. It has been beyond the scope of this project to pursue this in detail. As a general rule, where dating has changed within the 6th century, it may now be slightly earlier than was previously thought.
- *** References listed are those given by Tania Dickinson, or the published report in the case of cemeteries not included in her original survey. In order to avoid greatly overburdening the main bibliography of this volume, those references that occur only within the table of cemeteries are given in a separate list of references and abbreviations for the cemetery table, in this appendix, below. Works also cited elsewhere in the volume will be found in the main bibliography.

Map (opposite) Early Anglo-Saxon cemeteries in the Upper Thames Valley region

●	5th Century burial sites
●	6th Century burial sites
●	7th Century burial sites
●	8th Century burial sites
○	Undated site
△	Probable site
□	Uncertain site
○	Primary barrow
Elevation	
■	0-75m
■	75-150m
■	Above 150m



The Thames through Time

Anglo-Saxon cemeteries

No*	Name	Comments	Inhumed	Cremated
1	Abingdon I Saxton Road	Major mixed cemetery with early evidence. See current volume	128	99
2	Abingdon II High St	Brooch and spearhead only		
3	Abingdon III Our Lady's Convent	Beads (lost)		
4	Abingdon IV Barton Ct Fm	Burials in former Roman villa. See current volume	4	
5	Abingdon V Fitzharris East	Saucer brooch (lost); 4 br unprov		
6	Adwell Cop, Postcombe	Jaw, buckle and pin		
7	Appleford	Date uncertain. 1C6 bead; 2 knives; most may be late Saxon	9+	
8	Ashdown	Sword, spear, 2 knives, shears		
9	Ashendon, Bucks	Saucer brooches; ring-headed pin		
10	Asthall (barrow)	High status cremation burial in barrow. See current volume		2+
11	Aston Remenham	Unassoc brooches and spearheads		
12	Aston Tirrold	2 spearheads		
13	Aylesbury I	Unassoc spearheads, seax, pot, bone		
14	Aylesbury II	Spears/shields mostly unprovenanced		
15	Aynho	Skeleton with knife. Unprov spearhead		
16	Bassett Down (finds)	Skeletons; weapons, jewellery most unassoc		
17	Benson	Unassoc spear and axe; unprov spear + knife		
18	Bishopstone, Bucks	5 graves with weapons; large no. unassoc finds		
19	Vacant			
	Bampton 'The Beam'	Numerous burials, one with 7th-century pin		
	Bampton	Mid to late Saxon burials at minster church. See current volume	3	
20	Bledlow I Cop Round Barrow	In BA barrow. One with knife, spear, tweezers	2	5
21	Bledlow II The Warren	Graves'; skeleton with knife; C9 strap end		
22	Blewburton Hill hillfort	Many accomp. With disc/pen br;	21	1
23	Bourton-on-the-Water	1 accomp with pin set; many gr. Destroyed	8	
	Boveney	Isolated female burial with amethyst pendant, near prehistoric barrows. See current volume	1	
24	Boxford	Spearhead		
25	Brighthampton	Major mixed early Saxon cemetery	67+	12+
26	Brize Norton I	Skeletons with swords and armour'		
27	Brize Norton II	Skeleton with possible seax		
28	Broad Town	Skeletons in BA barrow; finds of mixed dates		
29	Broadwell	Unassoc finds from two locations		
30	Broughton Poggs	5 accomp bur; unassoc finds; br, sp, kn	16+	
31	Burford	Sword, shield boss, spear		
	Burghfield Field Farm	In BA barrow. Poss 100 originally. No bone survived. See current volume	50++	
32	Cassington I Purwell Farm	7 accomp; more destroyed; unassoc finds	21+	
33	Cass II Smith's Pit	Some grave groups; cone beaker; radiate br	18+	
34	Cass III Tuckwell's Pit	Skeletons with knives and spearhead'	8+	
35	Chadlington	6 accomp; 16 unaccomp; unassoc finds	24	
36	Cherbury Camp	IA fort; finds of br and sp		
37	Chimney	Late Saxon 'minster overflow' cemetery? Sampled only. See current volume	34+	
38	Chinnor I	Barrow; arrowhead and spearheads		
39	Chinnor II	Spearhead		
40	Cirencester I	Two accomp; cut into mosaic in villa	2	
41	Cirencester II Barton Pit	Some destroyed; not nec. all A-S	9+	
42	Cirencester III	Scabbard mouth; unprov shield bosses		
43	Clifton Hampden	Skeletons with axes, swords and ironwork'		
44	Cokethorpe Park	Isolated triple grave; mounts, silver bullae		
45	Coleshill	Skeleton with brooches	1	
46	Cote nr Bampton	Mentioned by Akerman; no other details		
47	Cuddesdon (barrow)	See current volume		
48	Cumnor (report)	Human bones with swords and armour'		
	Didcot Power Station	See current volume	17	

Appendix

Date**	References***
EC5-EC7	Leeds and Harden 1936; BAJ 42, 1938, 20; Oxon. 7, 1942, 102-3; AM Archives C.Antiq. 3 Peake 1931, 172; Manning MSS
M-LC6	Miles 1986; Chambers and McAdam f/c; CBA 9 NL 3, 1973, 26; CBA 9 NL 5, 1975, 41 Ab.M Catalogue
C7	Oxon. 38, 1973, 120-3
LS?	Hinchliffe and Thomas 1980; Peake 1931, 134, 174; BAJ 65, 1970, 56; CBA 9 NL 4, 1974, 8-9 Kemble 1863, pl. XXVI; Arch.J. 7, 1850, 391-2; TNDFC 1, 1871, 176; VCH Berks I, 247
EC7	JBAA 5, 1849, 113-6; Arch.J. 7, 1850, 87; Akerman 1855, pl. XXXVIII
EC7	Dickinson and Speake 1992; Antiq.J. 4, 1924, 113-26; Anon 1924, 15; VCH Oxon I, 365-6; AM Archives
LC5-LC6	De Baye 1893, pl. VIII, 5; VCH Berks I, 246; Peake 1931, 127, 223; Antiq.J. 12, 1932, 445 Peake 1931, 136; BAJ 41, 1937, 34, 42, 1938, 21; BAJ 65, 1970, 57; Antiq.J. 10, 1930, 1949-50. Rec.Bucks. 2, 1870, 101-3; Rec.Bucks. 11, 1920-6, 163; CBA 9 NL 4, 1974, 12 Rec.Bucks. 12, 1927-33, 427 Beesley 1841, 37; TNOAS 22, 1887, 35; Baker 1836, 558
LC5-LC6	WAM 27, 1896, 104-8; WAM 46, 1934, 155; Cunnington and Goddard 1934, 243-8; VCH Wilts I, 2, 470-1 Arch. 71, 1921, 235
LC5-LC6	Rec.Bucks. 3, 1870, 164; Rec.Bucks. 5, 1878, 23-5; Rec.Bucks. 14, 1945-6, 324-32; Rec.Bucks. 16, 1958, 291-4 Blair 1994, 64
LC7-C11	Blair 1998a
C6-C7	Rec.Bucks. 13, 1938, 313-51 Sheahan 1862, 104-5; Antiq.J. 21, 1942, 221
LC5-EC6	Harding 1976?; BAJ 53, 1953, 51-4; BAJ 57, 1959, 52-73; Oxon. 10, 1945, 93; CA 1, 1967, 83-5
?C7	PCNFC 33, 1960-1, 166-9
LC6-EC7	Foreman et al. 2002, 28-34
LC5-LC6	Arch. 37, 1857, 391-98; Arch. 38, 1860, 84-97; PSA 1st ser 4, 1859, 70-1, 96, 217-, 231-2, 329; PSA 2nd ser 2, 1864, 443; BBOAJ 4, 1898, 12; Oxon. 14, 1949, 75; VCH Oxon I, 360-2; Davis and Thurnam 1865, pl.28; SAL, Oxford Red Folio A, 1; Leeds 1930, 1 BBOAJ 4, 1898, 13 BBOAJ 4, 1898, 13 WAM 6, 1860, 256; WAM 29, 1897, 86; WAM 46, 1934, 163; VCH Wilts I, 58, 1666, 243; Cunnington and Goddard 1934, 239
LC6-EC7	TBGAS 7, 1883, 72; TBGAS 58, 1936, 167; TBGAS 83, 1964, 13
LC5-LC6	Arch. 37, 1857, 143-6; PSA 1st ser 4, 1859, 73 Oxon. 34, 1969, 111-5
C7	Butterworth and Lobb 1992, 5-72
C6	Med.Arch. 6, 1962-3, 1-14; Oxon. 7, 1942, 62-70
EC5-LC6	Oxon. 5, 1940, 3, 163; Oxon. 7, 1942, 61-2; Oxon. 8/9, 1944, 196; Oxon. 15, 1950, 104-6; Oxon. 16, 1951, 79; Leeds 1935 Dickinson 1975; Oxford Times 7, xi, 1930; VCH Oxon I, 357, 370
C7	Oxon. 5, 1940, 23-30
C6	Oxon. 4, 1939, 196-7; Oxon. 5, 1940, 13-20
C8-C12	Crawford 1989; BBOAJ 4, 1898, 13; Oxon. 17/18, 1952-3, 223
LC5-EC6	VCH Oxon I, 348; Manning MSS
LC6-EC7	Manning MSS
LC5-EC6	Church 1910, 25, 36; TBGAS 33, 1910, 67-77; TBGAS 70, 1951, 51-3
LC6-C7	TBGAS 19, 1895, 394-8; Church 1910, 15, 40
LC5-EC6	Buckman and Newmarch 1850, 101 BBOAJ 4, 1898, 14; Manning MSS
C7	CBA 9 NL 5, 1975, 41
LC6	Antiq.J.. 13, 1933, 167-9; WAM 46, 1933, 391 Arch. 38, 1859, 327; Leeds 1930
EC7	Dickinson 1974 Wood 1773, 578
C7	Boyle et al. 1995

The Thames through Time

Anglo-Saxon cemeteries (continued)

No*	Name	Comments	Inhumed	Cremated
49	Dinton, Bucks	Poorly recorded; accomp gr and unassoc finds	22	
50	Dorchester Dyke Hills	In IA rampart; late Roman/early C5th. See this volume	17+	2+
51	Dorchester II Minchin Rec Gr	Single female accomp. Burial; late C4/early C5. See this volume	1	
52	Dorchester III Amey's Pit Burcot	BA barrow; spear, br, rings	11+	
53	Dorchester IV Bishops Court	9 unaccomp; 1 with seax and knife	10	
54	Dorchester V Bishops Court House	Skeletons; unprov. finds poss from here	5	?1
55	Dorchester VI Berinsfield	See current volume	108	
56	Ducklington	1 accomp with bracteate, pendant, garnet	2	
57	East Garston	Skeleton; unassoc br		
58	E Ilsley I	In 3 of 4 barrows; 6 unaccomp; 1 with LC7 gr gds	8	
59	E Ilsley II	Spearhead		
60	E Shefford	Many accomp; large quantity unassoc finds	78+	some
61	Ellesborough	3 accomp		
62	Ewelme	15 unaccomp; unassoc finds; date uncertain	16+	poss
63	Eynsham I Wytham View	1 accomp and unassoc finds	10+	some
64	Eynsham II New Wintles Farm	2 accomp, 1 in barrow; 2 disturbed	4	
65	Fairford	Destroyed C19; some recorded; finds dispersed	180+	some
	Fairford Claydon Pike	Burials in former Roman villa, C8-C10. See current volume	5	
66	Filkins	Numerous accomp; unassoc finds	24+	
67	Fordwells	Spearhead		
68	Foxcote Manor, Andoversford	2 with combs, 1 with strap-end	3	
69	Frilford I Frilford Heath	At least 28 AS graves among 212+ in LRB cemetery	28+	13
70	Frilford II	Skeleton with large pot; bronze ring (lost)		
71	Frilford III Noah's Ark	Grave at Romano-Celtic temple site with seax and knife	1	
72	Great Kimble	Spearhead		
73	Great Tew	1 grave in Roman villa with iron buckle and knife		
74	Hampnett	Secondary to Neo long barrow and round barrows	10	5
75	Hartwell	Weapons, knives etc found		
76	Harwell	5 accomp bur; 2 unaccomp	7	
77	Headington (Oxford), Barton, Fox Inn	Skeleton in sunken hut with pottery	1	
	Headington (Oxford) 2 Stephens Rd	Isolated female burial acc with br, beads; check date	1	
78	Hinton Down	Secondary burial in BA barrow, spearhead (lost)	1	
79	Hogshaw Hill	1 with seax and possible knife		
80	Horspath	1 with bronze object; 2 in stone pit nearby		
81	Iffley	S-shaped brooch		
82	Kemble I	Small collection of grave goods only; many lost	26	
83	Kemble II	Small cemetery similar to Kemble I reportedly found c 1837		
New	Kemble III			
84	Kempsford	1 burial with Gotlandkessel and beads	1	
85	Kidlington	1 burial with seax, knives, buckle		
86	Kingsey	Unassoc finds of br, spears, seax, cremation urns		
15				
87	Kirtlington I	2 Saxon burials recorded as found in 1931		
88	Kirtlington II	1 skeleton with 2 brooches and other remains found		
89	Lambourn	Sherd from cremation urn		
	Lechlade Butlers Field	See current volume	219	29
90	Lew	Listed by Akerman as AS cemetery; no other information		
91	Lewknor	6 no information; 3 accomp; 3 unaccomp; unassoc finds	12	

Appendix

Date**	References***
LC5-LC6	Douglas 1793, 69; Arch. 10, 1792, 169-71; Rec.Bucks. 2 1870, 137-40; Leeds 1930
C4-EC5	Oxon. 5, 1942, 163; Oxon. 9, 1944, 196; Oxon. 17-18, 1952-3, 63-76; Arch. 71, 1921, 241; Med.Arch. 5, 1961, 2-7; Antiq.J. 48, 1968, 238-9; Manning MSS; Leeds 1930
LC4-EC5	Oxon. 17-18, 1952-3, 63-76
LC5-EC7	Oxon. 11/12, 1947, 164; Arch.New. 1, 1948, 5; Atkinson et al 1951, 60; PSA 2nd ser, 1863, 209
C7	Oxon. 23, 1958, 131; AM Archives; May (un) BBOAJ 4, 1898, 78; VCH Oxon I, 351; Manning MSS; May 1977
EC5-EC7	Boyle et al. 1995; CBA 9 NL 5, 1975, 41; CBA 9 NL 6, 1976, 67-8; Arch. 38, 1858, 328, 334; Anon 1908, 119-120; Dickinson 1974, 25-30; Bruce-Mitford 1975, 665, 676; Bruce-Mitford 1974, 266-8
C7	PSA 2nd ser 1, 1860, 100-1 PSA 13, 1890, 182
LC7	Hewett 1844, 153-5; VCH Berks I, 279; BAJ 39, 1935, 179; BAJ 40, 1936, 46; Reading Mercury 28 i, 1843; Antiq.J. 43, 1963, 49-50 Anon 1966, 19
LC5-LC6	QJBAS 1, 1890, 81; PSA 2nd ser 13, 1891, 107-8; PSA 2nd ser 21, 1905, 8-9; JBAA 50, 1894, 155; TNDFC 4, 1895, 196-9; VCH Berks I, 239-40; JRAI 45, 1915, 92-130
C7	Rec.Bucks. 9, 1909, 425-30; Rec.Bucks. 17, 1961-5, 302 PSA 2nd ser 22, 1903, 71-2; Oxon. 9, 1944, 196
LC5-EC6	Oxon. 17/18, 1952-3, 216, 224; Med.Arch. 17, 1973, 148; Arch. 38, 1859, 328; Leeds 1930; CBA 9 NL 3, 1973, 20; AM Archives
C6-C7	Oxon. 34, 1969, 1-4; Oxon. 38, 1973, 382-4
LC5-LC6	Wylie 1852; JBAA 2, 1847, 53-4; Arch. 34, 1852, 77-82; Arch. 37, 1857, 145-6; PSA 1st ser 2, 1851, 122, 125, 132, 137, 186; PSA 1st ser 3, 1854, 105-6; PSA 1st ser 4, 1857, 38-40; Akerman 1855, 37; Anon 1860, 12-3; Davis and Thurnam 1865, pl.20; AM Archives; Swanton 1947
C8-C10	Miles et al. 2007
C6	Arch. 37, 1857, 140-6; BBOAJ 2, 1896, 101; AM Archives Phillips (un); VCH Oxon I, 360 TBGAS 58, 1936, 157-70
EC5-LC6	PSA 2nd ser 3, 1865, 136-44; Arch. 42, 1869, 417-85; Arch. 45, 1875, 405-10; Antiq.J. 1, 1921, 87-97; Oxon. 4, 1939, 1-70; Oxon. 6, 1941, 87; Peake 1931, 135-6; RCU 1870-1, 51-4; Med.Arch. 17, 1973, 138; Dudley-Buxton 1936, 203-13; Dickinson 1976 AM Archives
C7	Oxon. 4, 1939, 37-39; AM Archives
C7	
LC5-LC6	Grimes 1960, 113-28 Arch.J. 23, 1866, 78; VCH Bucks I, 196
LC5-LC7	Oxon. 21, 1956, 22-54; Oxon. 32, 1967, 73 VCH Oxon I, 356, 371
LC5-EC6	Boston 2004
C7	Arch. 52, 1890, 57-8; WAM 38, 1914, 266; VCH Wilts I, 42, 159, 292 Rec.Bucks. 2, 1863, 50 BBOAJ 4, 1898, 22; VCH Oxon I, 371; Manning MSS VCH Oxon I, 354; PCAS 51, 1968, 46
LC5-LC6	Arch. 37, 1857, 113-5 Arch. 37, 1857, 119
C7	King et al. 1996 TBGAS 81, 1962, 196-7
EC8	Baldwin Brown 1915, 229; VCH Oxon I, 356; Manning MSS Sheahan, 1862, 295; Rec.Bucks. 2, 1863, 166-7; Rec.Bucks. 14, 1945-6, 318-9; VCH Bucks I, 198, 205; PSANHS 5, 1854, 7,
C6	POAHS 3, 1874, 171
LC5-EC8	Boyle et al. 1998 Leeds 1930
LC7-EC8	Oxon. 24, 1959, 100

The Thames through Time

Anglo-Saxon cemeteries (continued)

No*	Name	Comments	Inhumed	Cremated
New	Lewknor, Beacon Hill	Mid to late Saxon rural cemetery. See current volume	39+	
92	Little Kimble	Francisca and spearhead found (now lost)		
93	Little Wittenham Castle Hill	Possible cremation urn sherd		1?
94	Lockinge I Arn Hill	W-E burials on summit of hill; most unacc; spears/knives; no info	80	
95	Lockinge II Betterton	1 burial in stream bank with br, ring, bead (all now lost)	1	
96	Longcot	1 burial with beads, br, silver wire ring	1	
97	Long Hanborough City Fm	In a line across barrows	2	3+
98	Long Wittenham I	See current volume	196	51++
99	Long Wittenham II	7 accomp inc pin suites; 4 unaccomp; Wigbaldestun cauldron	11	
100	Lowbury Hill barrow	Primary barrow burial at Roman temple site. See current volume	1	
101	Lower Heyford	Graves and urn in Harborough Bank; finds inc spears, br, beads		1
102	Lower Shiplake	Saxon remains reported; 2 urns now extant		2
103	Lyford	Bead		
104	Lyneham I Lyneham Camp	Skeletons found around IA hillfort; spearheads		
105	Lyneham II Long Barrow	3 secondary accomp inhumations with weapons	3	
106	Milton I	2 with swords; unaccomp burials; Roman burials nearby?	11	
107	Milton II	4 acc; 9 unacc; finds (many unassoc) inc composite brooches	13+	
108	Minster Lovell	2 acc with weapons, br; 2 unacc; unassoc finds	4+	
109	North Leigh	3 acc inc silver wire rings; 5 no info; unassoc workbox, shears, seax	8	
110	Oddington Glos	In stone-built barrow; spears, br, beads, many finds lost	6+	
111	Oddington Oxon	6 or 7 graves with prob shields and weapons	7	
112	Oxford Osney	Urn		
113	Oving	Enamelled hanging bowl, not certainly from burial		
114	Oxford I Radcliffe Infirmary	Gold bracteate and two graves		
115	Oxford II Park Town	?2 graves; shield boss and spear; Roman cemetery nearby	2?	
116	Oxford III Summertown	1 accomp burial with br, knife and beads	1	
117	Oxford IV Summerfields	1 accomp burial with shield, spear, knife; 2 unassoc spears	2	
	Oxford Christ Church Tom Quad	Late Saxon cemetery of St Frideswide's minster (part). See current volume	2	
	Oxford Christ Church Cloister	Late Saxon cemetery of St Frideswide's minster (part). See current volume	70+	
	Oxford Christ Church Cathedral Graveyard	Late Saxon cemetery of St Frideswide's minster (part). See current volume	37	
	Oxford St Aldate's Church	Late Saxon urban, possibly church, cemetery (part). See current volume	8	
118	Pangbourne	Weapons, urns, coins (all lost); extant spearhead C4 or C5		
119	Purley Tilehurst Station	Grave with beads, br, pot; unassoc sword found in vicinity	1	
120	Purton	3 recorded acc inc seax with gold wire; unassoc finds	13	
121	Reading I Earley Brick Kiln	5 acc with weapons, br;	5	8
122	Reading II Southcote Lane	Isolated cremation burial		1
123	Reading III Oxford Rd	1 accomp with spear and shield	1	
124	Ready Token, Poulton, Glos	Skeletons found, m+f reported in one grave; shield boss survives		
125	Segsbury Camp	Small urn and shield boss, poss secondary Saxon burial	1	
	Shepperton Upper West Field			
	Shepperton Walton Bridge Green	Possible cemetery of this date		
	Shepperton War Close	C18 record of finding of quantities of human bone with spears, swords etc		
	Shepperton Green	See current volume. Mid to late Saxon 'settlement' burial ground	20+	
126	Shilton	Spearhead		
127	Shipton on Cherwell	Two spearheads		
128	Sonning	Cast saucer brooch dredged from river		
129	Souldern	Small no. burials found from near Roman settlement	5++	3+
130	Sparsholt	Skeleton with spearhead		
131	Spelsbury	Spearhead, knife and cast bronze disc		

Appendix

<i>Date**</i>	<i>References***</i>
LC7-C9	Chambers 1973; 1976 Rec.Bucks. 2, 1863, 98 BAJ 42, 1938, 25 PSA 2nd ser 2, 1863, 320-1; PSA 2nd ser 3, 1865, 139; VCH Berks I, 238-9; Peake 1931, 136
LC5-EC6	PSA 2nd ser 14, 1892, 103
C7	Peake 1931, 136
C7	Oxon. 29/30, 1964, 3, 6, 15, 22, 29, 87-9
EC5-EC7	Arch.J. 5, 1848, 291-4; Arch. 38, 1860, 327-52; Arch. 39, 1861, 135-42; PSA 2nd ser 2, 1863, 37; Davis and Thurnam 1865, pl. 47; Anon 1892, 209; VCH Berks I, 229-35; Peake 1931, 131-3; Leeds 1930; Manning MS
LC7-EC8	PSA 2nd ser 2, 1862, 133-5
LC7	Atkinson 1916, 15-23; Antiq.J. 43, 1963, 46, 82-4
C6-EC7	Richardson 1823; JBAA 1, 1846, 33; JBAA 2, 1847, 89; Blomfield 1892; VCH Oxon I, 345-5; Arch. 71, 1920-1, 248; TNOAS 1857, 9-10
C6	Manning MSS
LC5-EC6	BBOAJ, 4, 1898, 23; Oxon. 22, 1957, 1-10; Manning MSS
LC6	PSA 2nd ser 15, 1895, 405-10; CNDM 21, ix, 1895
C6	Arch.J. 4, 1847, 252-4; Akerman 1855, 5-7; Peake 1931, 134-5, 212; Arch. 38, 1859, 328; Arch. 73, 1923, 147; Oxon. 8/9, 1943-4, 197; Oxon. 14, 1949, 76; Oxon. 28, 1963, 96; Dawkins (un) 233; Anon. 1942; Leeds 1930; Manning MSS; Ure 1918-9
C7	
EC5-LC6	POAHS 3, 1873, 125-6; Oxford Journal 16, iii, 1872; Rolleston Papers (AM Archives)
C7	Oxon. 5, 1940, 21-3 Gentleman's Magazine 1787 I, 292-3; Arch. 34, 1851, 82 Skelton 1823, 7; Hussey 1841, 35-6; VCH Oxon I, 354;
C5	
C7	VCH Bucks I, 195; Fowler 1968, 297, 305
?C6	OHS 90, 1929, 195-6; OHS 47, 1905, 96-7; Stevenson and Salter 1939, 509; Plot 1705, 359; Wood 1773, 221; Arch. 1, 1804, 179-83; VCH Oxon I, 355-6, 371; Oxon. 1, 1936, 161-72; Gibson 1926, 57-8
LC5-EC6	AO 1895, 4, 49, 111; Anon. 1912, no.40; VCH Oxon I, 356; Mannnig MSS (quoting Oxford Times 9, v, 1903)
LC5-EC6	POAHS 2, 1865, 15; Arch. 91, 1921, 253; VCH Oxon I, 356; Anon. 1912, no.41;
LC5-EC6	Anon. 1912, no.42; Arch. 91, 1921, 253; VCH Oxon I, 356; Oxon. 23, 1958, 137; Crofton Croker 1853; Anon. 1884, 8-9
C9-C10	Hassall 1973
C8-C10	Scull 1988
C7-C10	Boyle 2001
C9-C10	Tyler 2001
C5	C.Antiq. 2, 1852, 224; Standard, 24, xi, 1838; VCH Berks I, 246 VCH Berks I, 246; Peake 1931, 129
C7	WAM 37, 1912, 496, 606-8; WAM 46, 1934, 115; Cunnington and Goddard 1934, 252
EC5-LC6	PSA 2nd ser 3, 1867, 461-3; JBAA 50, 1894, 150-7; VCH Berks I, 240-1; BBOAJ 13, 1907-8, 5-8; Peake 1931, 122, 127 BBOAJ 28, 1924, pl. facing p.19 VCH Berks I, 246
C6	BAJ 60, 1962, 43; Grinsell 1939, 10-11
LC5-LC6	Longley and Poulton 1982; Poulton 1987
LC5-LC6	Longley and Poulton 1982; Poulton 1987 Longley and Poulton 1982; Poulton 1987
LC7-C10	Canham 1979; Poulton forthcoming b
LC6-EC7	VCH Oxon I, 356
LC5-EC7	Wing, 1845, 72-4; TNOAS 22, 1887, 3-5; Arch.J. 3, 1847, 352-3; Blomfield 1882, 19-21; Beesley 1841, 37 Meaney 1964, 51 TNOAS 3, 1854, 119; VCH Oxon I, 357; Oxon. 31, 1938, 168

The Thames through Time

Anglo-Saxon cemeteries (continued)

No*	Name	Comments	Inhumed	Cremated
132	Standlake Down I	BA barrow cemetery; see current volume	100+	
133	Standlake Down II	Burial with spearhead reported by Stone; unacc burials also found		
134	Stanton Fitzwarren	Skeleton with iron knife		
135	Stanton Harcourt I	BA barrow cemetery; many infant/child burials. Ssee current volume	23	
136	Stanton Harcourt II Dix's Pit	Date uncertain	15+	
137	Stone	Reports of burials and cremations; unassoc br, pot, spearhead		
138	Stratton	Skeleton with shield and spear; unassoc tweezers and br		
139	Streatley	Skeleton with spear, knife and buckle	1	
140	Sutton Courtenay I Amey's Pit	2 acc; 1 with br, beads, coin; 1 with bronze pin	3	
141	Sutton Courtenay II Sutton Field	Shield boss		
142	Sutton Courtenay III Lane report	Anglo-Saxon burial reported	1	
143	Sutton Courtenay IV	1 burial from floor of sunken hut; unassoc saucer br	1	
144	Swinbrook	Reported find of spearhead		
145	Swindon Evelyn St	Skeleton with spear and knife; large no. unaccomp burials nearby		
146	Sydenham Taplow	Shield boss Primary barrow burial. See current volume. 2 further burials nearby	3	
147	Theale	5 sherds from 5 decorated pots, provenance unsure		
148	Uffington I White Horse Hill	See current volume; cremations contained poss. A-S grave goods	10+	?9
149	Uffington II Stockholm Farm	Skeleton with spear and knife		
150	Upper Heyford I The Leas	Skeletons with stirrups, irons, and armour, found near Aves Ditch		
151	Upper Heyford II The Portway	Human bones and cremation urn reported		
152	Upper Swell I Pole's Wood East	2 or 3 acc secondary burials in long barrow; spears and knives	3	
153	Upper Swell II Pole's Wood South	1 acc with br, knife, bead; 2 disturbed	3	
154	Upton	2 or 3 graves; 1 acc with shield boss and knife	2+	
155	Wallingford	Intermittent discoveries of burials from early mixed rite cemetery	24	7+
	Wallingford St Martin's Church	219 burials of C10-C15 date at church in centre of burh. See current volume		
156	Wanborough I Callas Hill	1 acc with spear, knife; others reported	1+	
157	Wanborough II Foxhill	1 acc with belt plate, knife, shield; unassoc bent sword, shields, spear	6 to 8	
	Watchfield	?300-350 originally; G 67 rare balance set with weights and runic inscription	52++	2
158	Welford West Hendred	Seax 3 exc, 1 with spear and shield; unassoc finds from ?6 graves; v early brooch	9+	sherds
159	Wheatley	Nr R villa; poss coffin; c 27 acc with br, beads, weapons; unassoc weapons	70+	
160	Whitchurch	Side by side; 1 poss Roman with coin in mouth; 1 with Saxon knife	2	
161	Winchendon I		1	1
162	Winchendon II	3 shields, 2 spears		
163	Woodeaton	2 spears, 1 failed pendant casting found nr Roman temple; no burials known		
164	Woolstone	Secondary in villa, 3 with seaxes or knives, 2 unacc	5	
165	Wootton	Burial with spearhead	1	
166	Wytham	2 acc with beads, knife; unassoc knife	3+	
167	Yarnton	1 acc, seax, bucket, spear, shield; unassoc weapons; others date unclear		
	Yarnton	Mid to late Saxon settlement burials. See current volume	9+	
168	Yelford	14 acc inc box frags, amethyst bead; 12 unacc; pits of burnt material	26	4?

Appendix

<i>Date**</i>	<i>References***</i>
C7	Oxon. 38, 1973, 233-8, 239-57 Oxon. 38, 1973, 251 WAM 38, 1914, 322; VCH Wilts I, 106
C7	Arch. 38, 1859, 328; Oxon. 10, 1945, 33-41 Oxon. 8/9, 1943-4, 200; Oxon. 16, 1951, 82
LC6-EC7	Arch 30, 1844, 545; Arch 34, 1852, 21-24; Akerman 1855, 76-7; Smyth 1864, 9-13; Rec.Bucks. 14, 1941-6, 315, 324; Rec.Bucks. 17, 1961-5, 128; Ross 1970, 255-85 TBGAS 12, 1887-8, 1; TBGAS 19, 1895, 397; PSA 1st ser 4, 1857-9, 39 Hoare, 1819, 53; Arch. 38, 1860, 328; JBAA, 39, 1934, 213
LC6	Oxon. 8/9, 1943-4, 200-2
LC5-EC6	Peake 1931, 134, 233
LC6	Arch. 71, 1923, 169 Oxon. 23, 1958, 138 WAM 46, 1934, 156; VCH Wilts I, 113
LC6-EC7	Skelton 1823, 2 Geake 1997; Saxon, newsletter of the Sutton Hoo Society, for 2002; publication in progress at the British Museum
C6	TNDFC 8, 1938, 60-2
C6-C7	Miles et al. 2003, 264-6; Davis and Thurnam 1865, pl. 51; TNDFC 1, 1871, 176; VCH Berks I, 247; WAM 43, 1927, 437; JRSAI 66, 1936, 233 BAJ 37, 1933, 78; Meaney 1964, 52 VCH Oxon I, 372; VCH Oxon IV, 202; TNOAS, 1857, 9-10; CBA 9 NL 4, 1974, 10-11; Manning MSS
C6	Blomfield 1882, 21; CBA 9 NL 4, 1974, 10-11; TBGAS 2, 1878, 24; TBGAS 7, 1883, 42, 74; TBGAS 83, 1964, 13-14; Greenwell 1877, 521-4; Crawford 1925, 124-5 TBGAS 2, 1878, 24; TBGAS 7, 1883, 42, 74; TBGAS 83, 1964, 13-14; Greenwell 1877, 521-4; Crawford 1925, 124-5 Oxon. 23, 1958, 138; Oxon. 25, 1960, 136; Med.Arch. 3, 1959, 295
C5-C6	BAJ 41, 1937, 39; BAJ 42, 1938, 28, 93-101; Oxon. 4, 1939, 196; Oxon. 5, 1940, 164; Antiq.J. 17, 1937, 435; Peake 1931, 239, 131
LC6-EC7	WAM 44, 1927-9, 91, 244; WAM 46, 1934, 170; Cunnington and Goddard 1934, 252; VCH Wilts I, 118
EC6	WAM 49, 1942, 542-3
LC5-LC6	Scull 1992
C7	Peake 1931, 129, 243
EC5-EC6	Hamerow 1993b
LC5-EC7	PBPS 4i, 1886, 179-193; PSA 2nd ser 29, 1916, 48-63; Arch.J. 2, 1845, 350; Arch.J. 3, 1846, 92; AM Archives Slatter 1895, 8
C6	Rec.Bucks. 18, 1969, 306-12 VCH Bucks I, 197; Moreton 1929, 33 JRS 7, 1917, 98; Oxon. 14, 1949, 1-45; AM Archives
C7	Ant. 10, 1884, 36, 181; VCH Berks I, 247-8
LC6-EC7	Med.Arch. 5, 1961, 309; Oxon. 26/27, 1961-2, 339 Rolleston 1884, 939-44; BBOAJ 4, 1898, 45-6; Peake 1931, 135, 250; Manning MSS
LC6-EC7	POAHS 1, 1862, 110-6; Rolleston 1884, 942-4; VCH Oxon I, 356 Boyle 2004
C7	PSA 1st ser 4, 1859, 97-100, 213-15; Arch. 38, 1858, 97; SAL MSS Oxford Red Portfolio plan 45

References and abbreviations used in the table of cemeteries

References

- Akerman, J. Y. 1855. *Remains of Pagan Saxondom*. London.
- Anon. 1860. *Catalogue of Temporary Museum*. Archaeological Institute Gloucester Meeting.
- Anon. 1884. *Christie's Sale Catalogue, Sale of Lord Londesborough Collection*.
- Anon. 1892. *National Museum of Antiquities of Scotland Catalogue*.
- Anon. 1908. *Catalogue of the Collection of London Antiquaries in the Guildhall Museum*.
- Anon. 1912. *Oxford Millenary Exhibition Catalogue*.
- Anon. 1924. *Report of the Visitors of the Ashmolean Museum*.
- Anon. 1942. *Glendinning and Co. Sale Catalogue*. 9 ix.
- Anon. 1966. *Report of the Visitors of the Ashmolean Museum*.
- Atkinson, D. 1916. *The Romano-British Site on Lowbury Hill in Berkshire*.
- Atkinson, R. J. C., Piggott, C. M. and Sanders N. K. 1951. *Excavations at Dorchester, Oxon, I*.
- Baker, G. 1836. *The County of Northampton I*.
- Baldwin Brown, G. 1915. *The Arts in Early England III-IV*. London.
- Beesley, A. 1841. *History of Banbury*.
- Blomfield, J. C. 1882. *History of the Present Deanery of Bicester, Oxon*. 1.
- Blomfield, J. C. 1892. *History of Lower and Upper Heyford*. Deanery of Bicester, Part VI.
- Bruce-Mitford, R. L. S. 1974. *Aspects of Anglo-Saxon Archaeology: Sutton Hoo and Other Studies*. London.
- Bruce-Mitford, R. L. S. 1975. *The Sutton Hoo Ship Burial I*. London.
- Buckman, J. and Newmarch, C. H. 1850. *Illustrations of the Remains of Roman Art in Cirencester*.
- Church, A. H. 1910. *A guide to the Museum of Roman Remains at Cirencester*. Cirencester, 10th edition.
- Crawford, O.G.S. 1925. *Long Barrows of the Cotswolds*.
- Crofton Croker, T. 1853. *Catalogue of a Collection of Ancient and Mediaeval Rings and Personal Ornaments Formed by Lady Londesborough*.
- Cunnington, M. E. and Goddard, E. H. 1934. *Catalogue of Antiquities in the Museum of the Wiltshire Archaeological Society at Devizes II*. Devizes.
- Davis, J. B and Thurnam, J. 1865. *Crania Britannica II*. London.
- Dawkins, J. Undated. *Collection for Oxfordshire*. 5.
- De Baye, J. 1893. *The Industrial Arts of the Anglo-Saxons*. London.
- Dickinson, T. M. 1974. *Cuddesdon and Dorchester-on-Thames, Oxfordshire: Two Early Saxon 'Princely' Sites in Wessex*. BAR 1.
- Douglas, J. 1793. *Nenia Britannica*.
- Dudley-Buxton, L. H. 1936. The sea-raiders, in *Essays Presented to R. R. Marrett*, 203-13.
- Fowler, E. 1968. Hanging bowls, in J. M. Coles and D. D. A. Simpson (eds) *Studies in Ancient Europe: essays presented to Stuart Piggott*, 287-310. Leicester.
- Gibson, A. G. 1926. *The Radcliffe Infirmary*.
- Greenwell, W. 1877. *British Barrows*.
- Grimes, W. F. 1960. *Excavations on Defence Sites 1939-45: mainly Neolithic and Bronze Age*.
- Grinsell, L. V. 1939. *White Horse Hill*.
- Hewett, W. 1844. *History of the Hundred of Compton*.
- Hoare, R. C. 1819. *Ancient Wiltshire*.
- Hussey, R. 1841. *The Roman Road from Alchester to Dorchester*.
- Kemble, J. M. 1863. *Horae Ferales*. London.
- Leeds, E.T. 1930. *Notes on Excavations in Anglo-Saxon Cemeteries at Yelford, Brighthampton, Oxon, Long Wittenham and Milton, Berks, and Dinton, Bucks - Conducted by J.Y. Akerman 1858-1860*. AM Archives, Typescript.
- Leeds, E.T. 1935. *Report on Archaeological Discoveries on the Oxford Northern By-pass*. AM Archives, Typescript.
- Leeds, E. T. and Harden, D. B. 1936. *The Anglo-Saxon Cemetery at Abingdon, Berkshire*. Oxford.
- May, J. Undated. *Romano-British and Saxon Sites Near Dorchester, Oxfordshire*. Draft typescript.
- Meaney, A. L. 1964. *A Gazetteer of Early Anglo-Saxon Burial Sites*. London.
- Moreton, C. O. 1929. *Waddesdon and Over Winchendon*.
- Peake, H. 1931. *The Archaeology of Berkshire*. London.
- Phillips, C. W. Undated. *Ordnance Survey Dark Age Index*.
- Plot, R. 1705. *Natural History of Oxfordshire*.
- Richardson, E. 1823. *Remarks on a Journey into Oxfordshire*. Manuscript pasted into Ashmolean Museum Accession register.
- Rolleston, G. 1884. *Scientific Papers and Addresses II*.
- Ross, A. 1970. Shafts, pits, wells - sanctuaries of the Belgic Britons?, in J. Coles and D. Simpson (eds) *Studies in Ancient Europe, Essays Presented to S. Piggott*, 255-85.
- Sheahan, J. J. 1862. *History and Topography of Buckinghamshire*.
- Skelton, J. 1823. Lewknor Hundred, in F. Mackenzie (ed.) *Engraved Illustrations of the Principal Antiquities of Oxfordshire*, 2.
- Skelton, J. 1823. Ploughley Hundred, in F. Mackenzie (ed.) *Engraved Illustrations of the Principal Antiquities of Oxfordshire*, 7.

Appendix

- Slatter, J. 1895. *History of Whitchurch*.
Smyth. 1864. *Addenda Aedes Hartwellianae*.
Stevenson and Salter. 1939. *Early History of St John's College, Oxford*. Oxford History Society.
Swanton, M. J. 1947. *The Spearheads of the Anglo-Saxon Settlements*. Royal Archaeological Institute, London.
- Ure, P. N. 1918-9. Untitled manuscript. Department of History Museum, Reading University.
- Wing, W. 1845. *Antiquities of Steeple Aston*.
Wood, A. 1773. *Ancient and Present State of the City of Oxford*. London.
Wylie, W. M. 1852. *Fairford Graves*. Oxford.

Abbreviations

Ab.M	Abingdon Museum
AM	Ashmolean Museum
Ant.	The Antiquary
Antiq.J	Antiquaries Journal
AO	Archaeologia Oxoniensis
Arch.	Archaeologia
Arch.J.	Archaeological Journal
Arch.New.	Archaeological Newsletter
BAJ	Berkshire Archaeological Journal
BBOAJ	Berkshire, Buckinghamshire and Oxfordshire Archaeological Journal
CA	Current Archaeology
C.Antiq.	C. Roach Smith. <i>Collectanea Antiqua</i> , I-VI.
CBA 9 NL	Council for British Archaeology Group 9 Newsletter
CNDM	Chipping Norton Deanery Magazine (in Manning MSS)
JBAA	Journal of the British Archaeological Association
JRAI	Journal of the Royal Anthropological Institute
JRS	Journal of Roman Studies
JRSAI	Journal of the Royal Society of Antiquaries of Ireland
Manning MSS	Manuscript collection of Percy Manning, Ashmolean Museum
Med.Arch.	Medieval Archaeology
OHS	Oxford History Society
Oxon.	Oxoniensia
PBPS	Proceedings of the Birmingham Philosophical Society
PCAS	Proceedings of the Cambridge Antiquarian Society
PCNFC	Proceedings of the Cotteswold Naturalists Field Club
POAHS	Proceedings of the Oxford Architectural and Historical Society
PSA	Proceedings of the Society of Antiquaries of London
PSANHS	Proceedings of the Somerset Archaeological and Natural History Society
QJBAS	Quarterly Journal of the Berkshire Archaeological Society
RCU	Register of Cornell University
Rec.Bucks.	Records of Buckinghamshire
SAL	Society of Antiquaries of London
TBGAS	Transactions of the Bristol and Gloucestershire Archaeological Society
TNDFC	Transactions of the Newbury District Field Club
TNOAS	Transactions of the North Oxfordshire Archaeological Society
VCH Berks I	Victoria County History of Berkshire I (1906)
VCH Oxon I	Victoria County History of Oxfordshire (1936)
VCH Wilts I, 1	Victoria County History of Wiltshire Part 1 (1957)
VCH Wilts I, 2	Victoria County History of Wiltshire Part 2 (1973)
WAM	Wiltshire Archaeological Magazine

Abbreviations

AM	Ashmolean Museum
BAJ	<i>Berkshire Archaeological Journal</i>
BBOAJ	<i>Berks Bucks and Oxon Archaeological Journal</i>
BL	British Library
Bodl. Lib.	Bodleian Library, University of Oxford
CBA9	Council for British Archaeology Group 9 (Newsletter)
CUCAP	Cambridge University Collection of Aerial Photographs
HE	Bede <i>A History of the English Church and People</i> , trans L Sherley-Price, revised edn. 1978, Harmondsworth
NMR	National Monuments Record
RCHME	Royal Commission on the Historical Monuments of England
RIB	<i>Roman Inscriptions of Britain</i>
SMA	<i>South Midlands Archaeology</i>
SMR	Sites and Monuments Record
VCH	Victoria County History (the Victoria History of the Counties of England)

