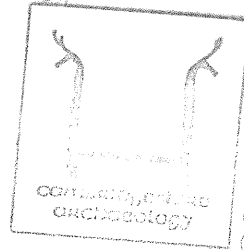
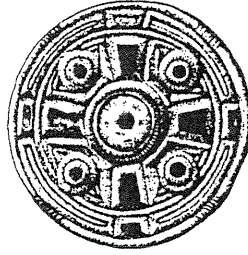


ARCHAEOLOGY FIELD OFFICE
FULBURN COMMUNITY CENTRE
HAGG'S GAP, FULBURN
CAMBRIDGE CB1 5HD Tel 881611
(Fax

CAMBRIDGESHIRE EARTHWORKS REPORT - 2001



ARCHAEOLOGY FIELD OFFICE
FULBURN COMMUNITY CENTRE
11, 12, 13, 14, 15, 16, 17, 18, 19, 20, 21, 22, 23, 24, 25, 26, 27, 28, 29, 30, 31, 32, 33, 34, 35, 36, 37, 38, 39, 40, 41, 42, 43, 44, 45, 46, 47, 48, 49, 50, 51, 52, 53, 54, 55, 56, 57, 58, 59, 60, 61, 62, 63, 64, 65, 66, 67, 68, 69, 70, 71, 72, 73, 74, 75, 76, 77, 78, 79, 80, 81, 82, 83, 84, 85, 86, 87, 88, 89, 90, 91, 92, 93, 94, 95, 96, 97, 98, 99, 100
CAMBRIDGE CB1 5HD Tel: 881614
(Fax)



Archaeological Field Unit

Cambridgeshire Earthwork 2001

Monument Management Project

Stephen Macaulay

March 2001

Cambridgeshire County Council

Report No. 191

Commissioned by Cambridgeshire County Archaeology Office

Monument Management Project
Cambridgeshire Sites & Monuments Record – Earthworks

by Stephen Macaulay

1 Introduction

This report was undertaken as part of the Cambridgeshire Monument Management Project (MMP) to enhance the selection strategy of sites to be considered for inclusion in the scheme. In operation since 1992 the Cambridgeshire MMP is a joint English Heritage and Cambridgeshire County Council project designed to enable and carry out pro-active management projects on significant archaeological monuments throughout the County. The scheme has included over 30 sites in direct management and indirectly affected many others through both advice and liaison. The MMP deals both directly and indirectly with landowners, tenants, District Councils (notably South Cambridgeshire and East Cambridgeshire), Parish Councils, Conservation bodies, Government Agencies, local societies, as well as the general public.

Each year the MMP selects a number of monuments to be entered into the scheme. The management agreements are based on the Section 17 (S.17) agreements which English Heritage offer to owners of Scheduled Ancient Monuments (under the 1979 Ancient Monuments and Archaeological Areas Act). Each agreement lasts for 5 years after which time the scheme is reviewed. English Heritage provide a grant for the conservation management of each site and the County Council fund the staff to run and manage the project.

2 Circumstances of the Project

The Cambridgeshire Monument Management Project was originally designed to manage important archaeological monuments, in general (although not exclusively) selected from the English Heritage County (Cambridgeshire) List of Scheduled Ancient Monuments (designation under 1979 Ancient Monuments and Archaeological Areas Act). While the project has been very successful in selecting and managing sites, it has become increasingly clear that the selection criteria for monuments was biased towards Scheduled Ancient Monuments (SAM's) and other well known sites. However the scale of identification, recording and investigation of sites in Cambridgeshire has continued at a very fast rate, and the information of which is held on the Counties Sites and Monuments Record (SMR). There are, therefore, potentially a large number of sites which could benefit from either inclusion in the MMP scheme or from advice for other possible conservation grants.

This study was instigated to review and analyses the earthwork data recorded on the SMR (including SAM's) to potentially identify new sites for consideration. Arable sites have been included in MMP agreements, however it was not within the scope of this review to tackle those sites.

3 Methodology

3.1 Sites and Monuments Record

The project was entirely desk-based with the aim to review and investigate all the earthwork sites recorded on the Sites and Monuments Record (SMR). The SMR was interrogated using a selection of 'fields' to attempt to list the maximum number of sites which could be classified as an 'earthwork' (as opposed to cropmark sites, any other site with no upstanding remains or upstanding architectural features). The SMR produced a list of sites which might be classified as an earthwork and this list was divided first by District (Cambridge City, East Cambridgeshire, Fenland, Huntingdonshire and South Cambridgeshire) and then by individual Parish (to include all Cambridgeshire Parishes).

Once this list was produced the research centred on investigating each individual SMR entry (using the paper record) to determine a number of significant factors. These were; Site or Monument **Description**; recorded **Landuse** and site **Condition**; the nature and quality of the information **Source**; checking the National **Grid Reference**; any **Other** management factors (e.g. SSSI's, County Wildlife Sites, Agri-Environmental Schemes etc.) and where appropriate to make **Recommendations**. Once this data was collated a database could then be produced to meet the aims of the project.

3.2 Problems with the Sites and Monuments Record Search

The investigation of the Sites and Monuments Record identified a number of problems. First amongst these was the lack of internal consistency of the number of sites that the SMR identified as an 'earthwork'. It was not possible to repeat the original search of the SMR (despite inputting the original search fields) and the confidence that the present report has investigated all the earthworks recorded on the SMR is therefore poor. However the study has reviewed over 1800 records and represents the most in-depth survey of the earthworks of Cambridgeshire ever undertaken.

Within each District studied a number of known (to the author) earthwork sites (some of which were Scheduled Ancient Monuments) did not appear on the SMR search list. These sites were (often) well known and of national importance (and therefore their omission was easily spotted), however the number of lesser known sites which have not appeared on the SMR list is impossible to say. As a result of this work one of the conclusions of this report is to highlight the problem of SMR integrity. The SMR does not

operate effectively as an inter-relational database, the most likely cause of this is the disparity of data entry over the years.

3.3 Other Factors

In addition to consulting the SMR the aim of the project was to feed back useful data into the SMR to create a better and more useful database for managing the earthwork element of Cambridgeshire's Historic Environment. Information has been added to the database concerning the monuments, which has included information on agri-environmental schemes, identifying which sites have important Wildlife or Nature Conservation issues, where sites are under other management schemes etc. To this end the results of the study have been put onto an Access Database which is fully compliant with the present Cambridgeshire Sites and Monuments Record.

4 Results (see Appendix C)

5 Discussion, Recommendations & Conclusions

5.1 Discussion

The analysis of the Sites & Monuments Record will enable the implementation of a more detailed and strategic approach to the management of Cambridgeshire historic environment. The integration the earthworks database, with the existing Sites & Monuments Record, will improve the management of and selection of monuments within the County and will add a layer of detail which includes existing management schemes and recommendations for future projects, as well as existing designations and related conservation schemes.

The analysis of the County's earthworks (as recorded on the SMR) identified the following local and national designations:-

Sites of Special Scientific Interest (SSSI's)	7
County Wildlife Sites (CWS)	13
Scheduled Ancient Monuments (SAM's)	163

The following existing management schemes affected earthworks in the County:-

Monument Management Project (MMP)	25
English Heritage S17 Agreements	9
Countryside Stewardship Agreements (CSS)	7
English Heritage Monument Protection Programme	150+

5.2 Recommendations

The Cambridgeshire Earthwork Report makes a number of recommendations which relate to the future management proposals. These fall into five categories:-

- | | |
|-------------------------|---|
| NO | The site(s) should not be considered for management schemes due to a number of factors (destruction, not real, built over, fully excavated or would not benefit). |
| SHORTLIST | The site(s) should be considered with appropriate site visit and further investigation. Management schemes should be implemented if necessary and possible. |
| CHECK MPP REVIEW | The site (burial monument) may have been reviewed as part of the English Heritage Monuments Protection Programme. This report should be consulted and appropriate action taken. Initial consultation (February 2001 added information on 84 sites). |
| NO (MANAGED) | The site(s) are currently under a management scheme (Monument Management Project, English Heritage Grant Aid, Countryside Stewardship Scheme, National Trust, Local Authority or private management). The expiry date of existing management schemes is recorded. |
| RENEW MMP | These site(s) have been in the County's Monument Management Project and renewing the agreements is to be considered. |
| YES | These site(s) should be entered into a pro-active management scheme if possible. They should be visited, owners consulted and a management proposal produced. |

5.3 Conclusions

A total of 981 earthwork records held by the County Sites and Monuments Record were reviewed during this project. Of these the following recommendations were made:-

NO	487
SHORTLIST	372
CHECK MPP REVIEW	17
NO (already MANAGED)	48
RENEW MMP	5
YES	52

A total of 52 monuments were recommended for management schemes (yes), purely from the SMR search, of which 38 are Scheduled Ancient Monuments (SAM's). This is not unsurprising given that most SAM's are well known. There is a much greater number of sites to be further investigated (shortlist) the majority of which are not SAM's.

APPENDIX A - Sites Recommended for Management Projects

District	Parish	SMR	Description	Landuse	Source	Grid Ref.	Other
East Cambs	Burwell	7801	Devils Dyke	scrub	SAM 5	TL 5680 6600	Lottery Project
East Cambs	Cheveley	1763	Cheveley Castle	woodland	SAM 4(27187)	TL 6787 6131	once in MMP
East Cambs	Fordham	7515	Moor Farm bowl barrow	arable	SAM 258 (27168)	TL 6210 7334	Co. Farms
East Cambs	Fordham	7568	barrow	arable	same as 7515	TL 6250 7340	Co. Farms
East Cambs	Haddenham	7945	barrow	arable	D. Hall, MPP	TL 4230 7672	MPP
East Cambs	Haddenham	11111	2 barrows	arable	CUCAP, MPP	TL 4050 7460	MPP
East Cambs	Reach	11382	Devils Dyke	scrub	SAM 5	TL 5690 6628	Co. Farms
East Cambs	Sutton	1070	The Burystead Moat	pasture	OS, VCH	TL 4340 7895	see earthworks
East Cambs	Sutton	11992	Burystead earthworks	pasture	CCC Arch	TL 4330 7890	see moat
East Cambs	Wicken	1067	Chancel Farm Moat	woodland	SAM 69(29711)	TL 5770 7027	once Co. Farms
Fenland	Leverington	4448	Sea or Roman Bank	scrub	SAM 51	TL 4470 1140	owner reluctant
Fenland	March	6175	Stonea Grange Roman town, Saxon settlement	arable	CCC Arch	TL 4480 9450	
Fenland	Parsons Drove	8478	Fendyke Bank	arable	OS, VCH	TL 3690 0930	plough damage
Fenland	Wimblington	6052	Honey Bridge barrow	arable	SAM 23	TL 4356 8925	owner reluctant
Huntingdonshire	Chesterton	1877	Durobrivae Roman town	pasture & arable	SAM 130	TL 1210 9690	large site
Huntingdonshire	Earith	1780	The Bulwark civil war battery	pasture	SAM 150(27105)	TL 3930 7500	SSSI
Huntingdonshire	Eynesbury & Hardwick	2364	Weald Deserted Medieval Village	scrub	SAM 164	TL 2290 5960	large project
Huntingdonshire	Folksworth & Washingley	1009	Otter Pond Moat	pasture	SAM 210(29705)	TL 1424 8990	good condition
Huntingdonshire	Godmanchester	1056	Moat (close to St Mary's Church)	scrub	SAM 107(11350)	TL 2471 7072	
Huntingdonshire	Great Staughton	458	Rushey Farm Roman Villa	pasture	SAM 131	TL 1348 6310	set aside land
Huntingdonshire	Kimbolton	689	Kimbolton Park Castle Hill motte	scrub/woodland	SAM 152(27171)	TL 0936 6737	tree replanting
Huntingdonshire	Leighton Bromswold	711	Earthworks SW of church	pasture/scrub	SAM 190	TL 1165 7522	
Huntingdonshire	Leighton Bromswold	5368	Salome Wood earthworks	woodland	CCC Arch	TL 1200 7810	wood managed
Huntingdonshire	Morborme	630	Deserted Medieval Village & earthworks	old pasture	SAM 247	TL 1389 9150	conservation
Huntingdonshire	Sawtry	1304	Sawtry Abbey	pasture/scrub	SAM 142(27103)	TL 1970 8200	grazed
Huntingdonshire	Water Newton	1901	Durobrivae Roman town (Normangate Field)	pasture & arable	SAM 127	TL 1100 9700	
Huntingdonshire	Water Newton	5316	Durobrivae town & fort	pasture	SAM 130	TL 1160 9730	

District	Parish	SMR	Description	Landuse	Source	Grid Ref.	Other
Huntingdonshire	Winwick	1493	Moat and shrunken Medieval village	pasture	SAM 211	TL 1061 8081	owner reluctant
South Cambs	Abington Piggots	1214	Moyné's Manor moat	pasture	SAM 33598	TL 2992 4546	
South Cambs	Abington Piggots	1233	Boybridge Grove moat	scrub	SAM 33596	TL 3090 4430	
South Cambs	Babraham	7970	Worsted Street (Via Devana) Roman Road	scrub	SAM 26	TL 6370 4730	Co Farms, CWS
South Cambs	Balsham	7889	Fleam Dyke Saxon earthwork	scrub/woodland	SAM 6	TL 5370 5550	Wildlife Trust
South Cambs	Barton	3324	Hey hill Roman Barrow (sw of Lords Bridge)	pasture	SAM 50(33349)	TL 3940 5450	rabbit damage
South Cambs	Cottenham	1118	Moat	scrub	SAM 267(11549)	TL 4490 6810	development
South Cambs	Cottenham	5330	Bullocks Haste Roman settlement	arable	SAM 66	TL 4650 7050	
South Cambs	Cottenham	5495	Bullocks Haste - earthworks	pasture	SAM 66	TL 4670 7010	
South Cambs	Cottenham	5516	Bullocks Haste - earthworks	pasture	SAM 66	TL 4660 7030	
South Cambs	Cottenham	5703	Chittering Hill earthworks, burial	pasture	MPP	TL 4970 7020	see Car Dyke
South Cambs	Croxton	2354	Croxton Deserted Medieval Village	pasture/gardens	SAM 274	TL 2530 5930	CWS
South Cambs	Croydon	1104	Croydon Wilds - moat, settlement	woodland	CCC Arch	TL 3040 5150	excellent
South Cambs	Elsworth	1085	Lordship Farm moat	woodland	OS, RCHM	TL 3157 6367	excellent
South Cambs	Fowlmere	1257	Crows Parlour moat	scrub	SAM 105	TL 4250 4562	owner reluctant
South Cambs	Fulbourn	1201	The Moat (Zouches Castle?)	scrub	VCH, CCC Arch	TL 5281 5628	SSSI, MMP
South Cambs	Fulbourn	9983	Worsted Street (Via Devana) Roman Road	scrub/pasture	SAM 26	TL 5230 5620	SSSI
South Cambs	Great Abington	6227	Brent Ditch Saxon earthwork	woodland	SAM 2	TL 5077 4830	
South Cambs	Gt Wilbraham	11146	Fleam Dyke Saxon earthwork	scrub/woodland	SAM 6	TL 5370 5770	
South Cambs	Guilford Morden	1210	Morden Hall moat	garden	OS, VCH, MPP	TL 2850 4390	owner by CC?
South Cambs	Harlton	1112	Moat & DMV	pasture	SAM 33277	TL 3850 5300	
South Cambs	Melbourn	3124	Goffers Knoll barrow	woodland	SAM 15(24420)	TL 3920 4240	close to arable
South Cambs	Melbourn	3149	Grinnet Hill barrow	scrub	SAM 19(24424)	TL 3750 4366	close to arable
South Cambs	Swavesey	1772	Castle Hill earthwork	pasture/scrub	SAM 37	TL 3590 6890	owners ideas
South Cambs	Swavesey	3488	Swavesey Priory	pasture	SAM 38	TL 3626 6942	grazed

Appendix B – List of earthworks by MPP Classification

MPP Classification	Count
Abbey	1
Bowl Barrow	105
Castle	3
Causewayed Enclosure	4
Church	6
Decoy Pond	4
Deerpark	5
Farmstead	18
field system	1
Fieldworks	29
Fishpond	20
Friaries	1
Grange	8
Hengi-Form Mon	1
Icehouse	2
Large MV Hillfort	3
Linear	16
Long Barrow	5
Medieval settlement	123
Minor Villa	5
Moat	305
Motte & Bailey	10
Nunnery	2
Pond Barrow	12
Post-Conquest Monument	5
Pre-Conquest Monument	1
Preceptory	3
RB settlement	8
Ring Ditch	11
Ringworks	2
Roman Barrow	8
Roman Camp	3
Roman Canal	4
Roman Docks	2
Roman Potteries	4
Roman Road	2
Roman Salterns	2
Roman Town	3
Roman Cemetery	1
Slight Uni Hillfort	2
square barrow	1
Trackways	1
uncertain	228
Warrens	1

Appendix C – List of Cambridgeshire’s earthworks