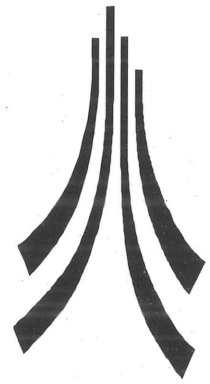


**LANCASTER**  
UNIVERSITY  
**ARCHAEOLOGICAL**  
UNIT



January 1999

---

# **A5 MILESTONES**

## **NORTH WALES**

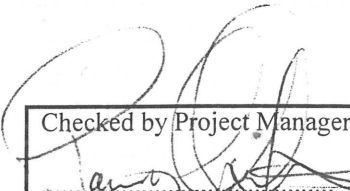
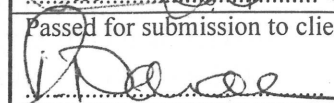
**Site Gazetteer**

A5 Milestones,  
North Wales

---

Archaeological Site Gazetteer

Report no 1998-99/035/AUA7859

Checked by Project Manager.	
	Date 11/1/99
Passed for submission to client.	
	Date 11/1/99

© Lancaster University Archaeological Unit  
Storey Institute  
Meeting House Lane  
Lancaster  
LA1 1TH

January 1999

---

## CONTENTS

---

<b>ACKNOWLEDGEMENTS.....</b>	<b>3</b>
<b>SUMMARY .....</b>	<b>4</b>
<b>1. INTRODUCTION .....</b>	<b>5</b>
<b>2. HISTORY OF THE TELFORD ROAD.....</b>	<b>6</b>
<b>3. METHODOLOGY .....</b>	<b>8</b>
3.1 Survey Methodology .....	8
3.2 Plate Text Interpolation .....	8
<b>4. MILESTONE GAZETTEER .....</b>	<b>10</b>
<b>5. CONCLUSIONS.....</b>	<b>33</b>
5.1 Milestone Buried Depth.....	33
<b>6. BIBLIOGRAPHY .....</b>	<b>34</b>
<b>ILLUSTRATIONS .....</b>	<b>35</b>
Fig 1 Scaled Drawing of Milestone 45 Plate	
Fig 2 Telford's Milestone Specification	
<b>PLATES .....</b>	<b>36</b>
Plate 1 Milestone 4 (Photo 9.2)	
Plate 2 Milestone 5 (Photo 9.3)	
Plate 3 Milestone 6 (Photo 9.6)	
Plate 4 Milestone 8 (Photo 9.9)	
Plate 5 Milestone 9 (Photo 9.10)	
Plate 6 Milestone 10 (Photo HH10)	
Plate 7 Milestone 11 (Photo 9.15)	
Plate 8 Milestone 12 (Photo 9.16)	
Plate 9 Milestone 13 (Photo 9.19)	
Plate 10 Milestone 17 (Photo HH17)	
Plate 11 Milestone 19 (Photo 9.22)	
Plate 12 Milestone 20 (Photo HH20)	
Plate 13 Milestone 21 (Photo 9.28)	
Plate 14 Milestone 30 (Photo 9.32)	
Plate 15 Milestone 31 (Photo 9.34)	
Plate 16 Milestone 35 (Photo 10.1)	
Plate 17 Milestone 38 (Photo 10.14)	
Plate 18 Milestone 40 (Photo HH40)	
Plate 19 Milestone 44 (Photo HH44)	
Plate 20 Milestone 45 (Photo HH45)	
Plate 21 Milestone 47 (Photo HH47)	
Plate 22 Milestone 49 (Photo 10.32)	
Plate 23 Milestone 57 (Photo 10.35)	

Plate 24 Milestone 47 (Photo 11.3)  
Plate 25 Milestone 67 (Provided by CADW)  
Plate 26 Milestone 75 (Photo 11.10)  
Plate 27 Milestone 79 (Photo 11.19)  
Plate 28 Milestone 80 (Photo 11.21)  
Plate 29 Milestone 83 (Photo HH83)  
Plate 30 Cast of Milestone 45 Plate



---

## ACKNOWLEDGEMENTS

---

Many thanks are owed to Dr Rick Turner, Inspector of Ancient Monuments at Cadw, and Dr Barrie Trinder, consultant historian. The fieldwork was undertaken during December by Peter Redmayne and Chris Scurfield, the data processing was by Chris Scurfield. The report was written by Jamie Quartermaine and Jo Bell. The report was edited by Jamie Quartermaine and Richard Newman. The project was managed by Jamie Quartermaine.

---

## SUMMARY

---

This report presents the results of a detailed study by Lancaster University Archaeological Unit (LUAU) of the A5 Telford milestones, and followed on from a major survey of the archaeology associated with the Welsh section of the road. The work is intended to inform the reconstruction and restoration of milestones and their plates along the course of the A5 through North Wales.

The study used the detailed specifications by Telford in conjunction with a field survey and it was demonstrated that there was a broad consistency between the stones and the original specification. It was demonstrated that for many of the milestones, up to 60% of the stone is now below ground.

The mileage inscriptions were cast onto metal plates which were bolted into recesses on the milestones. Many of these plates have been lost, particularly along the eastern section of the route, and it has been possible to interpolate the text for these missing plates on the basis of a basic design pattern and from the OS 1st edition map.

---

## 1. INTRODUCTION

---

- 1.1 Lancaster University Archaeological Unit were asked to undertake a survey of all the milestones along the line of the Welsh Section of the A5 by CADW. This programme follows on from an earlier study of Thomas Telford's road which is presently in preparation. The present study was intended to inform the condition and survival of the mile stones and to provide sufficient information to enable the reconstruction of stones and plates which no longer survive.
- 1.2 Telford's road linked Holyhead to London, and the Welsh section extends west of Chirk, passes through the heart of the Snowdonia national park and across the south-western side of Anglesey, leading up to the port of Holyhead. It was started in 1811 and was completed in 1825.
- 1.3 Milestones have been used in Britain since the Roman period, the majority of surviving stones date from the nineteenth century and were the principal road-side navigational aids prior to finger posts. By the nineteenth century mile stones designed as part of individual road schemes had become common. The Telfordian milestones on the A5 Holyhead road were a primary design feature, set at mile intervals, and comprised a large upright dressed stone, with a recess into which was inserted a cast-iron plate bearing an inscription of the mileage from Holyhead and two other key locations along the route.

---

## 2. HISTORY OF THE TELFORD ROAD

---

- 2.1 Thomas Telford's road between Holyhead and London (of which this report studies only the 83 miles in Wales) has been called 'perhaps the best example of road engineering of its period in Europe' (Trinder 1997). It includes some of his best contemporary solutions to engineering problems - for example the Menai Bridge, which at its construction in 1826 was the largest-span suspension bridge in the world (579 feet), and the Stanley Embankment which crossed Anglesey's Stanley sands on a floating platform.
- 2.2 The road was commissioned in response to a genuine need for an improved route between London and Holyhead, and by extension between the capitals of England and Ireland, since the Dublin ferry left from Holyhead. The road in existence at the beginning of the nineteenth century was notoriously bad, including gradients of up to 1 in 6½, sharp curves, boggy ground, unsurfaced or potholed tracks and stretches of open water. The journey was a dangerous one for coaches or horses, and at best an unpleasant one for pedestrians. The Act of Union of 1800 brought Irish members into Parliament, and the need for good communications between the two capitals became pressing. At this time mail took three days to make the journey from London to Dublin (Smiles 1874, 253). Irish MPs made vociferous complaints about the state of the roads, and political pressure grew for the financing of a single, integrated road-building programme and the commission of a single engineer to execute it. In 1811, therefore, a Parliamentary Act set up a commission to oversee the building of a road between Holyhead and London. The landing-places at Dublin (Howth) and Holyhead had already been improved by John Rennie, and the commission now appointed Thomas Telford to undertake road-building.
- 2.3 Telford embarked on an ambitious and well co-ordinated programme of road-building between London and Holyhead. He surveyed the route in 1810-11 and had improved the worst parts of the old road by 1819 - sometimes building an entirely new road, as he did through most of Anglesey. His road incorporated substantial bridges in particularly difficult sites, and major feats of engineering technology such as the Menai Bridge and the Stanley Embankment. Perhaps his major achievement, however, was the routine use of large embankments and cuttings to reduce the steep gradients characteristic of earlier roads serving the same locations.
- 2.4 The Menai suspension bridge was the most ambitious design to be included in the new road. Telford himself considered the Menai Straits 'the most formidable obstacle in the whole line of communication between London and Dublin'. His design was for a suspension bridge, which was to be the largest in the world. Plans were submitted to the Parliamentary Commission and authorised in 1819. Work was completed in 1825, and the bridge was opened in January 1826. Although it was subject to repairs after gales in 1839, it was generally free of structural problems and by 1827 the Commissioners could say that 'the public have acquired a perfect confidence in its stability' (Trinder 1998, n.p).
- 2.5 To co-ordinate and standardise the construction of the 83 miles of road in Wales, Telford and his subordinates adopted a system of 'lots' or subdivisions of the road. The length of the road through Wales was divided by Telford into 'lots' or parcels, and a single specification was produced for each lot. These were numbered 1-22 in Anglesey, where it was called the 'Anglesey Road' and 1-101 in mainland Wales, where it was called the 'Holyhead Road'. East of Chirk it was called the 'Holyhead and Chester Road'. Lots were numbered, not in west-east sequence, but apparently in the order in which they were to be completed by contractors.

- 2.6 Particularly difficult or time-consuming sections were built first, and Telford took care to choose experienced contractors for these areas, which included the area near the Llugwy waterfall, a stretch between Ty Gwyn and Lake Ogwen, and the 'rugged pass at Glyn-Conway' (Telford, 211). Thus lots 1 and 2 run west of Llyn Ogwen along Nant Ffrancon, whose rocky valley required a huge programme of cutting and embankment.
- 2.7 Consistency of work throughout was achieved by the application of detailed specifications, the supervision of work by Telford's overseers and Parliamentary representatives, and the agreement that contractors would be paid only nine-tenths of the agreed payment every month, with the balance due on satisfactory completion of their work (Telford, 210).
- 2.8 By 1819 many of the most difficult sections had been completed and in 1824 the first report of the Parliamentary Commissioners stated that the steepest gradient remaining on the road was 1 in 17, west of Betwys y Coed. By 1831, when the whole road in Wales was complete, the journey between London and Holyhead had been reduced from its 1815 duration of 41 hours and 12 minutes, to only 28 hours and 6 minutes.
- 2.9 Telford's road operated on the same principle as the turnpike roads, collecting tolls from road users to defray the cost of road-building. Toll houses and gates were as characteristic of his road as of its predecessors, and a few also had weigh-bridge machine houses to assess the weight of loaded carts.
- 2.10 In use the road was subject to increasing heavy traffic from growing industries, particularly the collieries in Anglesey which, from the late 1830s, caused problems of road erosion and sinkage. The slate quarries near Bethesda and Bangor also caused considerable wear on the roads.
- 2.11 The great advance represented by Telford's engineering was dealt a near-fatal blow within twenty years, ironically by a further engineering advance. The coming of the railways quickly robbed the road of much of its traffic, particularly the heavy industrial traffic which was wearing the road severely and to which, during their construction, the railways themselves contributed. Coach services also declined, to the extent that coaching inns such as that at Cernioge Mawr quickly went out of business. By 1850 concern was voiced in Parliament that the Holyhead road should continue to be given grants, now that the railways were complete (Trinder, 1998 n.p), and in 1851, only thirty years after much of it was completed, the road in Anglesey was becoming overgrown with grass (Trinder, 1998, n.p).
- 2.12 The road continued as a toll road until very late, since parts of Wales were the last to be freed from tolls by Acts of Parliament. Parts of it were still subject to tolls until 1895, and a toll gate survived *in situ* at Pont Cyfyng until 1890 (Harper 1902, 250).

---

### 3. METHODOLOGY

---

#### 3.1 SURVEY METHODOLOGY

- 3.1.1 The survey of the milestones followed on from the earlier study of the Holyhead road (LUAU in prep), and where possible utilised the information gained during this study. However, the present study required additional information to that obtained from the earlier study and it was necessary to undertake a survey of the milestones along the whole length of the route, which was undertaken over a two day period. A further day was undertaken producing the casts and detailed drawings.
- 3.1.2 With the exception of five stones, where it was too dangerous to stop and examine the stones on foot, all milestones or milestone locations were investigated. Each stone was recorded photographically using conventional black and white 35mm photography and also digital photography. The stones were described onto a specially designed proforma sheet which allowed for the input of the following data:
- Survival of stone, or stone and plate
  - Original or new location
  - On footpath or present carriageway
  - Surviving or interpolated text
  - The association of the stone with the stone wall
  - Estimate of the depth buried since erected
  - Listed or unlisted
- 3.1.3 The survey data was incorporated within a database and is output within the present report as a gazetteer (*Section 4*). The depth buried since erection was based on the original specification height of the stone of 1.498m (See *Section 5.1*).
- 3.1.4 A detailed dimensioned drawing of a representative plate was produced by tracing the outline of the plate and then by digitising the tracing into a CAD system.
- 3.1.5 Two casts were produced of milestone plates, that belonging to milestones 45 and 61. They were produced by first applying a releasing agent to the plate and then applying a tactile clay to the plate; the clay was contained within a wooden frame to preserve the form of the plate on removal. A secondary positive cast was produced from the clay representation using plaster of paris. There was limited shrinkage of the plaster of paris cast, but this amounted to only 2-3% of the overall plate size. The plate of milestone 61 had been painted and this reduced the clarity of the cast by comparison with that of milestone 48, where the cast was applied straight onto the metal.
- 3.1.6 The thickness of the metal plate was measured using a feeler gauge at the edge of the plate, and also by measurement of the recesses of the stones. The average thickness was found to be **150mm**.

#### 3.2 PLATE TEXT INTERPOLATION

3.2.1 A significant number of plates were missing from the milestones, particularly along the eastern section of the route and it is recommended that these be reconstructed. The text for these missing plates has been interpolated by a combination of following the pattern of design and by referencing to the Ordnance Survey 1st edition map.

3.2.2 **Design Pattern:** examination of the extant plates showed that they followed consistency of design in terms of the text. Between key places they consistently sited the same reference towns or way points and enabled therefore a reliable inference of the text for missing plates.

***Holyhead to Bangor***

HOLY-HEAD

MONA

BANGOR

***Bangor to Capel Curig***

HOLY-HEAD

BANGOR

C.CURIG

***Capel Curig to Cernioge***

HOLY-HEAD

C.CURIG

CERNIOGE

***Cernioge to Corwen***

HOLY-HEAD

CERNIOGE

CORWEN

***Corwen to Llangollen***

HOLY-HEAD

CORWEN

LLANGOLLEN

3.2.3 **OS 1st edition Map:** for each milestone the OS 1st edition map shows two place names and their respective distances from the milestone. The distances are expressed either as miles and furlongs or miles and vulgar fractions of a mile; in some instances they are expressed as miles and decimals of a mile. The OS annotation was compared with a large sample of the extant plates (25% of surviving plates) in order to check the correlation between the OS depiction and the plates. The plates always provide distances to three places, one of which is always Holyhead, whereas the OS maps only shows two places and usually excludes Holyhead. The only exception is on the section between Holyhead and Bangor, where one of the places is indeed Holyhead and consequently the distance to the third location is not provided. With this notable exception the places sited and the distance had a close correlation between the OS map and the plates.

3.2.4 The OS mapping provided the base information and distance (which were converted to miles and furlongs) and the observed design pattern provided the order and layout of the text. It was therefore possible to provide a reliable interpolation for the text of the missing plates.

## 4. MILESTONE GAZETTEER

<b>Milestone</b>	<b>01</b>		
<b>Project No</b>			
<b>Listed Building No</b>		<b>Planlet No</b>	
<b>NGR</b>	SH 2499 8188		
<b>Stone and Plate</b>	No	<b>Stone only</b>	No
<b>Original Location</b>	No	<b>New Location</b>	No
<b>Missing</b>	Yes		
<b>Digital Photo</b>		<b>B/W Photo</b>	
<b>Height</b>		<b>Buried Depth</b>	
<b>Location</b>			
<b>Wall Type</b>			
<b>Plate Text</b>			
<b>Interpolated Text</b>	HOLY-HEAD 1 MONA 12 BANGOR 24		
<b>Milestone</b>	<b>02</b>		
<b>Project No</b>			
<b>Listed Building No</b>		<b>Planlet No</b>	
<b>NGR</b>	SH 2635 8107		
<b>Stone and Plate</b>	No	<b>Stone only</b>	No
<b>Original Location</b>	No	<b>New Location</b>	No
<b>Missing</b>	Yes		
<b>Digital Photo</b>		<b>B/W Photo</b>	
<b>Height</b>		<b>Buried Depth</b>	
<b>Location</b>			
<b>Wall Type</b>			
<b>Plate Text</b>			
<b>Interpolated Text</b>	HOLY-HEAD 2 MONA 11 BANGOR 23		
<b>Milestone</b>	<b>03</b>		
<b>Project No</b>	007		
<b>Listed Building No</b>		<b>Planlet No</b>	3
<b>NGR</b>	SH 2761 8033		
<b>Stone and Plate</b>	Yes	<b>Stone only</b>	No
<b>Original Location</b>	No	<b>New Location</b>	Yes
<b>Missing</b>	No		
<b>Digital Photo</b>		<b>B/W Photo</b>	B/W1 16-18, CP1 6
<b>Height</b>	0.9	<b>Buried Depth</b>	0.598
<b>Location</b>	Footpath		
<b>Associated Wall Type</b>			
<b>Plate Text</b>	HOLY-HEAD 3 MONA 10 BANGOR 22		
<b>Interpolated Text</b>			
<b>Milestone</b>	<b>04</b>		
<b>Project No</b>	009		
<b>Listed Building No</b>		<b>Planlet No</b>	4
<b>NGR</b>	SH 2910 7949		
<b>Stone and Plate</b>	Yes	<b>Stone only</b>	No
<b>Original Location</b>	Yes	<b>New Location</b>	No
<b>Missing</b>	No		
<b>Digital Photo</b>		<b>B/W Photo</b>	B/W1 19-21, 9.2
<b>Height</b>	0.98	<b>Buried Depth</b>	0.518
<b>Location</b>	Footpath		
<b>Associated Wall Type</b>	Arched, not set in		



**Plate Text** HOLY-HEAD 4 MONA 9 BANGOR 21  
**Interpolated Text**

---

<b>Milestone</b>	<b>05</b>		
<b>Project No</b>	079		
<b>Listed Building No</b>		<b>Planlet No</b>	5
<b>NGR</b>	SH 3041 7862		
<b>Stone and Plate</b>	Yes	<b>Stone only</b>	No
<b>Original Location</b>	Yes	<b>New Location</b>	No
<b>Missing</b>	No		
<b>Digital Photo</b>		<b>B/W Photo</b>	B/W 9.3
<b>Height</b>	1.04	<b>Buried Depth</b>	0.458
<b>Location</b>			
<b>Associated Wall Type</b>			
<b>Plate Text</b>	HOLY-HEAD 5 MONA 8 BANGOR 20		
<b>Interpolated Text</b>			

---

<b>Milestone</b>	<b>06</b>		
<b>Project No</b>	039		
<b>Listed Building No</b>		<b>Planlet No</b>	5
<b>NGR</b>	SH 3194 7843		
<b>Stone and Plate</b>	Yes	<b>Stone only</b>	No
<b>Original Location</b>	Yes	<b>New Location</b>	No
<b>Missing</b>	No		
<b>Digital Photo</b>		<b>B/W Photo</b>	B/W 2.19-20, 9.6
<b>Height</b>	0.81	<b>Buried Depth</b>	0.688
<b>Location</b>			
<b>Associated Wall Type</b>	Arched, set in		
<b>Plate Text</b>	HOLY-HEAD 6 MONA 7 BANGOR 19		
<b>Interpolated Text</b>			

---

<b>Milestone</b>	<b>07</b>		
<b>Project No</b>	051		
<b>Listed Building No</b>		<b>Planlet No</b>	6
<b>NGR</b>	SH 3304 7808		
<b>Stone and Plate</b>	Yes	<b>Stone only</b>	No
<b>Original Location</b>	Yes	<b>New Location</b>	No
<b>Missing</b>	No		
<b>Digital Photo</b>		<b>B/W Photo</b>	B/W 9.7
<b>Height</b>	0.93	<b>Buried Depth</b>	0.569
<b>Location</b>			
<b>Associated Wall Type</b>	Arched, set in		
<b>Plate Text</b>	HOLY-HEAD 7 MONA 6 BANGOR 18		
<b>Interpolated Text</b>			

---

<b>Milestone</b>	<b>08</b>		
<b>Project No</b>	051A		
<b>Listed Building No</b>		<b>Planlet No</b>	7
<b>NGR</b>	SH 3502 7755		
<b>Stone and Plate</b>	Yes	<b>Stone only</b>	No
<b>Original Location</b>	Yes	<b>New Location</b>	No
<b>Missing</b>	No		
<b>Digital Photo</b>		<b>B/W Photo</b>	B/W 9.9
<b>Height</b>	1.16	<b>Buried Depth</b>	1.05
<b>Location</b>			
<b>Associated Wall Type</b>	Arched, set in		

---

**Plate Text** HOLY-HEAD 8 MONA 5 BANGOR 17  
**Interpolated Text**

---

<b>Milestone</b>	<b>09</b>		
<b>Project No</b>	059A		
<b>Listed Building No</b>		<b>Planlet No</b>	7
<b>NGR</b>	SH 3655 7694		
<b>Stone and Plate</b>	Yes	<b>Stone only</b>	No
<b>Original Location</b>	No	<b>New Location</b>	Yes
<b>Missing</b>	No		
<b>Digital Photo</b>		<b>B/W Photo</b>	B/W 9.10
<b>Height</b>	0.71	<b>Buried Depth</b>	0.788
<b>Location</b>			
<b>Associated Wall Type</b>			
<b>Plate Text</b>	HOLY-HEAD 9 MONA 4 BANGOR 16		
<b>Interpolated Text</b>			

---

<b>Milestone</b>	<b>10</b>		
<b>Project No</b>	071		
<b>Listed Building No</b>		<b>Planlet No</b>	8
<b>NGR</b>	SH 3802 7645		
<b>Stone and Plate</b>	Yes	<b>Stone only</b>	No
<b>Original Location</b>	Yes	<b>New Location</b>	No
<b>Missing</b>	No		
<b>Digital Photo</b>	HH10	<b>B/W Photo</b>	B/W 9.11
<b>Height</b>	1.17	<b>Buried Depth</b>	0.328
<b>Location</b>			
<b>Associated Wall Type</b>	Set in rebuilt wall		
<b>Plate Text</b>	HOLY-HEAD 10 MONA 3 BANGOR 15		
<b>Interpolated Text</b>			

---

<b>Milestone</b>	<b>11</b>		
<b>Project No</b>	075		
<b>Listed Building No</b>		<b>Planlet No</b>	8
<b>NGR</b>	SH 3966 7618		
<b>Stone and Plate</b>	Yes	<b>Stone only</b>	No
<b>Original Location</b>	Yes	<b>New Location</b>	No
<b>Missing</b>	No		
<b>Digital Photo</b>		<b>B/W Photo</b>	B/W 9.15
<b>Height</b>	1.06	<b>Buried Depth</b>	0.438
<b>Location</b>			
<b>Associated Wall Type</b>	Arched, set in		
<b>Plate Text</b>	HOLY-HEAD 11 MONA 2 BANGOR 14		
<b>Interpolated Text</b>			

---

<b>Milestone</b>	<b>12</b>		
<b>Project No</b>	093A		
<b>Listed Building No</b>		<b>Planlet No</b>	9
<b>NGR</b>	SH 4108 7552		
<b>Stone and Plate</b>	Yes	<b>Stone only</b>	No
<b>Original Location</b>	Yes	<b>New Location</b>	No
<b>Missing</b>	No		
<b>Digital Photo</b>		<b>B/W Photo</b>	B/W 9.16
<b>Height</b>	0.9	<b>Buried Depth</b>	0.598
<b>Location</b>			
<b>Associated Wall Type</b>	Wall has probably been removed; the stone is now in a fence line		

---

**Plate Text** HOLY-HEAD 12 MONA 1 BANGOR 13  
**Interpolated Text**

---

<b>Milestone</b>	<b>13</b>		
<b>Project No</b>	111		
<b>Listed Building No</b>		<b>Planlet No</b>	10
<b>NGR</b>	SH 4257 7496		
<b>Stone and Plate</b>	Yes	<b>Stone only</b>	No
<b>Original Location</b>	Yes	<b>New Location</b>	No
<b>Missing</b>	No		
<b>Digital Photo</b>		<b>B/W Photo</b>	B/W 9.19
<b>Height</b>	0.76	<b>Buried Depth</b>	0.738
<b>Location</b>	road		
<b>Associated Wall Type</b>	A rebuilt wall set behind the milestone		
<b>Plate Text</b>	HOLY-HEAD 13 MONA BANGOR 12		
<b>Interpolated Text</b>			

---

<b>Milestone</b>	<b>14</b>		
<b>Project No</b>	127		
<b>Listed Building No</b>		<b>Planlet No</b>	10
<b>NGR</b>	SH 4398 7440		
<b>Stone and Plate</b>	Yes	<b>Stone only</b>	No
<b>Original Location</b>	Yes	<b>New Location</b>	No
<b>Missing</b>	No		
<b>Digital Photo</b>		<b>B/W Photo</b>	No
<b>Height</b>	0	<b>Buried Depth</b>	
<b>Location</b>	road		
<b>Associated Wall Type</b>	set against wall		
<b>Plate Text</b>	HOLY-HEAD 14 MONA 1 BANGOR 11		
<b>Interpolated Text</b>			
<b>Comments</b>	Too dangerous to inspect on foot		

---

<b>Milestone</b>	<b>15</b>		
<b>Project No</b>	155		
<b>Listed Building No</b>		<b>Planlet No</b>	11
<b>NGR</b>	SH 4514 7362		
<b>Stone and Plate</b>	Yes	<b>Stone only</b>	No
<b>Original Location</b>	Yes	<b>New Location</b>	No
<b>Missing</b>	No		
<b>Digital Photo</b>		<b>B/W Photo</b>	No
<b>Height</b>	0	<b>Buried Depth</b>	
<b>Location</b>			
<b>Associated Wall Type</b>			
<b>Plate Text</b>	HOLY-HEAD 15 MONA 2 BANGOR 10		
<b>Interpolated Text</b>			
<b>Comments</b>	Too dangerous to inspect on foot		

---

<b>Milestone</b>	<b>16</b>		
<b>Project No</b>			
<b>Listed Building No</b>		<b>Planlet No</b>	11
<b>NGR</b>			
<b>Stone and Plate</b>	Yes	<b>Stone only</b>	No
<b>Original Location</b>	No	<b>New Location</b>	No
<b>Missing</b>	No		
<b>Digital Photo</b>		<b>B/W Photo</b>	No
<b>Height</b>	0	<b>Buried Depth</b>	

---

**Location****Associated Wall Type****Plate Text**

HOLY-HEAD 16 MONA 3 BANGOR 9

**Interpolated Text****Comments**

The stone has been reported to have been hit by a vehicle and is currently in an adjacent ditch. Not visited during survey

---

<b>Milestone</b>	<b>17</b>		
<b>Project No</b>	165B		
<b>Listed Building No</b>		<b>Planlet No</b>	12
<b>NGR</b>	SH 4784 7197		
<b>Stone and Plate</b>	Yes	<b>Stone only</b>	No
<b>Original Location</b>	Yes	<b>New Location</b>	No
<b>Missing</b>	No		
<b>Digital Photo</b>	HH17	<b>B/W Photo</b>	B/W 9.20
<b>Height</b>	1.03	<b>Buried Depth</b>	0.468
<b>Location</b>	Footpath		
<b>Associated Wall Type</b>	arched, set in		
<b>Plate Text</b>	HOLY-HEAD 17 MONA 4 BANGOR 8		
<b>Interpolated Text</b>			

---

<b>Milestone</b>	<b>18</b>		
<b>Project No</b>	171		
<b>Listed Building No</b>		<b>Planlet No</b>	12
<b>NGR</b>	SH 4947 7185		
<b>Stone and Plate</b>	Yes	<b>Stone only</b>	No
<b>Original Location</b>	No	<b>New Location</b>	Yes
<b>Missing</b>	No		
<b>Digital Photo</b>		<b>B/W Photo</b>	No
<b>Height</b>	0	<b>Buried Depth</b>	
<b>Location</b>	Footpath		
<b>Associated Wall Type</b>			
<b>Plate Text</b>			
<b>Interpolated Text</b>	HOLY-HEAD 18 MONA 5 BANGOR 7		
<b>Comments</b>	Too dangerous to inspect on foot		

---

<b>Milestone</b>	<b>19</b>		
<b>Project No</b>	187A		
<b>Listed Building No</b>		<b>Planlet No</b>	13
<b>NGR</b>	SH 5105 7190		
<b>Stone and Plate</b>	Yes	<b>Stone only</b>	No
<b>Original Location</b>	Yes	<b>New Location</b>	No
<b>Missing</b>	No		
<b>Digital Photo</b>		<b>B/W Photo</b>	B/W 9.22
<b>Height</b>	0.83	<b>Buried Depth</b>	0.668
<b>Location</b>	Footpath		
<b>Associated Wall Type</b>	arched, set in		
<b>Plate Text</b>	HOLY-HEAD 19 MONA 6 BANGOR 6		
<b>Interpolated Text</b>			

---

<b>Milestone</b>	<b>20</b>		
<b>Project No</b>	195		
<b>Listed Building No</b>	19661	<b>Planlet No</b>	14
<b>NGR</b>	SH 5265 7164		
<b>Stone and Plate</b>	Yes	<b>Stone only</b>	No
<b>Original Location</b>	Yes	<b>New Location</b>	No

---

<b>Missing</b>	No		
<b>Digital Photo</b>	HH20	<b>B/W Photo</b>	B/W 9.26
<b>Height</b>	0.94	<b>Buried Depth</b>	0.558
<b>Location</b>	wall		
<b>Associated Wall Type</b>	set in rebuilt wall		
<b>Plate Text</b>	HOLY-HEAD 20 MONA 7 BANGOR 5		
<b>Interpolated Text</b>			

<b>Milestone</b>	<b>21</b>		
<b>Project No</b>	707		
<b>Listed Building No</b>	19663	<b>Planlet No</b>	14
<b>NGR</b>	SH 5419 7167		
<b>Stone and Plate</b>	Yes	<b>Stone only</b>	No
<b>Original Location</b>	Yes	<b>New Location</b>	No
<b>Missing</b>	No		
<b>Digital Photo</b>		<b>B/W Photo</b>	B/W 9.28
<b>Height</b>	1.16	<b>Buried Depth</b>	0.338
<b>Location</b>	roadside verge		
<b>Associated Wall Type</b>	(free-standing)		
<b>Plate Text</b>	HOLY-HEAD 21 MONA 8 BANGOR 4		
<b>Interpolated Text</b>			

<b>Milestone</b>	<b>22</b>		
<b>Project No</b>	811		
<b>Listed Building No</b>		<b>Planlet No</b>	15
<b>NGR</b>	SH 5549 7178		
<b>Stone and Plate</b>	Yes	<b>Stone only</b>	No
<b>Original Location</b>	No	<b>New Location</b>	No
<b>Missing</b>	No		
<b>Digital Photo</b>		<b>B/W Photo</b>	No
<b>Height</b>	0.98m	<b>Buried Depth</b>	
<b>Location</b>	Set in wall (back of footway)		
<b>Associated Wall Type</b>			
<b>Plate Text</b>	HOLY-HEAD 22 MONA 9 BANGOR 3		
<b>Interpolated Text</b>			

<b>Milestone</b>	<b>23</b>		
<b>Project No</b>	812		
<b>Listed Building No</b>		<b>Planlet No</b>	15
<b>NGR</b>	SH 5660 7179		
<b>Stone and Plate</b>	yes	<b>Stone only</b>	No
<b>Original Location</b>	No	<b>New Location</b>	No
<b>Missing</b>	no		
<b>Digital Photo</b>		<b>B/W Photo</b>	No
<b>Height</b>	0.84m	<b>Buried Depth</b>	
<b>Location</b>	Set in short rebuilt wall in verge		
<b>Associated Wall Type</b>			
<b>Plate Text</b>	HOLY-HEAD 23 MONA 10 BANGOR 2		
<b>Interpolated Text</b>			

<b>Milestone</b>	<b>24</b>		
<b>Project No</b>	813		
<b>Listed Building No</b>		<b>Planlet No</b>	15
<b>NGR</b>	SH 5752 7186		
<b>Stone and Plate</b>	No	<b>Stone only</b>	yes
<b>Original Location</b>	No	<b>New Location</b>	No

<b>Missing</b>	No		
<b>Digital Photo</b>		<b>B/W Photo</b>	No
<b>Height</b>	1.16	<b>Buried Depth</b>	
<b>Location</b>	Set in wall at back of footway		
<b>Associated Wall Type</b>			
<b>Plate Text</b>			
<b>Interpolated Text</b>	HOLY-HEAD 24 MONA 11 BANGOR 1		
<b>Milestone</b>	<b>25</b>		
<b>Project No</b>	814		
<b>Listed Building No</b>		<b>Planlet No</b>	17
<b>NGR</b>	SH 5867 7239		
<b>Stone and Plate</b>	Yes	<b>Stone only</b>	No
<b>Original Location</b>	No	<b>New Location</b>	No
<b>Missing</b>	No		
<b>Digital Photo</b>		<b>B/W Photo</b>	No
<b>Height</b>	1.2m	<b>Buried Depth</b>	
<b>Location</b>	Set in wall at back of footway		
<b>Associated Wall Type</b>			
<b>Plate Text</b>	HOLY-HEAD 25 MONA 12 BANGOR 0M		
<b>Interpolated Text</b>			
<b>Milestone</b>	<b>26</b>		
<b>Project No</b>	815		
<b>Listed Building No</b>		<b>Planlet No</b>	17
<b>NGR</b>	SH 5941 7136		
<b>Stone and Plate</b>	No	<b>Stone only</b>	yes
<b>Original Location</b>	No	<b>New Location</b>	No
<b>Missing</b>	No		
<b>Digital Photo</b>		<b>B/W Photo</b>	No
<b>Height</b>	-	<b>Buried Depth</b>	
<b>Location</b>	Freestanding in verge		
<b>Associated Wall Type</b>			
<b>Plate Text</b>			
<b>Interpolated Text</b>	HOLY-HEAD 26 BANGOR 1 C.CURIG 13M-3F		
<b>Comments</b>	The milestone is broken diagonally, between 100m and 200mm above the ground level. The bottom of the plate would have been c 100mm above ground		
<b>Milestone</b>	<b>27</b>		
<b>Project No</b>	028/816		
<b>Listed Building No</b>		<b>Planlet No</b>	17
<b>NGR</b>	SH 5999 6995		
<b>Stone and Plate</b>	No	<b>Stone only</b>	yes
<b>Original Location</b>	No	<b>New Location</b>	No
<b>Missing</b>	No		
<b>Digital Photo</b>		<b>B/W Photo</b>	No
<b>Height</b>	1.410	<b>Buried Depth</b>	
<b>Location</b>	Freestanding in verge		
<b>Associated Wall Type</b>			
<b>Plate Text</b>			
<b>Interpolated Text</b>	HOLY-HEAD 27 BANGOR 2 C.CURIG 12M-3F		
<b>Milestone</b>	<b>28</b>		
<b>Project No</b>	817		
<b>Listed Building No</b>		<b>Planlet No</b>	18

<b>NGR</b>	SH 6085 6875		
<b>Stone and Plate</b>	yes	<b>Stone only</b>	No
<b>Original Location</b>	Yes	<b>New Location</b>	No
<b>Missing</b>	No		
<b>Digital Photo</b>		<b>B/W Photo</b>	No
<b>Height</b>	0.69	<b>Buried Depth</b>	
<b>Location</b>	Set in wall at back of footway		
<b>Associated Wall Type</b>			
<b>Plate Text</b>	HOLY-HEAD 28 BANGOR 3 C.CURIG 11M-3F		
<b>Interpolated Text</b>			

<b>Milestone</b>	<b>29</b>		
<b>Project No</b>	036		
<b>Listed Building No</b>		<b>Planlet No</b>	19
<b>NGR</b>	SH 6148 6742		
<b>Stone and Plate</b>	Yes	<b>Stone only</b>	No
<b>Original Location</b>	Yes	<b>New Location</b>	No
<b>Missing</b>	No		
<b>Digital Photo</b>		<b>B/W Photo</b>	B/W 9.30
<b>Height</b>	0.98	<b>Buried Depth</b>	0.518
<b>Location</b>	Footpath		
<b>Associated Wall Type</b>	arched, set in		
<b>Plate Text</b>	HOLY-HEAD 29 BANGOR 4 C.CURIG 10M-3F		
<b>Interpolated Text</b>			

<b>Milestone</b>	<b>30</b>		
<b>Project No</b>	038		
<b>Listed Building No</b>		<b>Planlet No</b>	19
<b>NGR</b>	SH 6256 6639		
<b>Stone and Plate</b>	Yes	<b>Stone only</b>	No
<b>Original Location</b>	Yes	<b>New Location</b>	No
<b>Missing</b>	No		
<b>Digital Photo</b>		<b>B/W Photo</b>	B/W 9.32
<b>Height</b>	1.2	<b>Buried Depth</b>	0.3
<b>Location</b>			
<b>Associated Wall Type</b>	arched, set in wall & built over		
<b>Plate Text</b>	HOLY-HEAD 30 BANGOR 5 C.CURIG 9M-3F		
<b>Interpolated Text</b>			

<b>Milestone</b>	<b>31</b>		
<b>Project No</b>	251		
<b>Listed Building No</b>		<b>Planlet No</b>	19
<b>NGR</b>	SH 6322 6508		
<b>Stone and Plate</b>	Yes	<b>Stone only</b>	No
<b>Original Location</b>	No	<b>New Location</b>	Yes
<b>Missing</b>	No		
<b>Digital Photo</b>		<b>B/W Photo</b>	B/W 9.34
<b>Height</b>	0.93	<b>Buried Depth</b>	0.568
<b>Location</b>	in concrete gutter		
<b>Associated Wall Type</b>			
<b>Plate Text</b>	HOLY-HEAD 31 BANGOR 6 C.CURIG 8M-3F		
<b>Interpolated Text</b>			

<b>Milestone</b>	<b>32</b>		
<b>Project No</b>	293		
<b>Listed Building No</b>		<b>Planlet No</b>	20

<b>NGR</b>	SH 6363 6348		
<b>Stone and Plate</b>	No	<b>Stone only</b>	Yes
<b>Original Location</b>	No	<b>New Location</b>	No
<b>Missing</b>	No		
<b>Digital Photo</b>		<b>B/W Photo</b>	No
<b>Height</b>	0	<b>Buried Depth</b>	
<b>Location</b>			
<b>Associated Wall Type</b>			
<b>Plate Text</b>			
<b>Interpolated Text</b>	HOLY-HEAD 32 BANGOR 7 C.CURIG 7M-3F		
<b>Comments</b>	Too dangerous to inspect on foot		

<b>Milestone</b>	<b>33</b>		
<b>Project No</b>	301		
<b>Listed Building No</b>		<b>Planlet No</b>	21
<b>NGR</b>	SH 6439 6214		
<b>Stone and Plate</b>	No	<b>Stone only</b>	Yes
<b>Original Location</b>	No	<b>New Location</b>	No
<b>Missing</b>	No		
<b>Digital Photo</b>		<b>B/W Photo</b>	No
<b>Height</b>	0	<b>Buried Depth</b>	
<b>Location</b>	concrete gutter		
<b>Associated Wall Type</b>	rebuilt wall to rear		
<b>Plate Text</b>			
<b>Interpolated Text</b>	HOLY-HEAD 33 BANGOR 8 C.CURIG 6M-3F		
<b>Comments</b>	Too dangerous to inspect on foot		

<b>Milestone</b>	<b>34</b>		
<b>Project No</b>	307A		
<b>Listed Building No</b>		<b>Planlet No</b>	21
<b>NGR</b>	SH 6486 36062		
<b>Stone and Plate</b>	Yes	<b>Stone only</b>	No
<b>Original Location</b>	No	<b>New Location</b>	Yes
<b>Missing</b>	No		
<b>Digital Photo</b>		<b>B/W Photo</b>	B/W 9.35
<b>Height</b>	0.95	<b>Buried Depth</b>	0.548
<b>Location</b>	concrete gutter		
<b>Associated Wall Type</b>	rebuilt wall to rear		
<b>Plate Text</b>	HOLY-HEAD 34 BANGOR 9 C.CURIG 5M-3F		
<b>Interpolated Text</b>			

<b>Milestone</b>	<b>35</b>		
<b>Project No</b>	058		
<b>Listed Building No</b>		<b>Planlet No</b>	22
<b>NGR</b>	SH 6632 6028		
<b>Stone and Plate</b>	No	<b>Stone only</b>	Yes
<b>Original Location</b>	Yes	<b>New Location</b>	No
<b>Missing</b>	No		
<b>Digital Photo</b>		<b>B/W Photo</b>	B/W 4.26-29, 10.1, CP1
<b>Height</b>	0.86	<b>Buried Depth</b>	23-26
<b>Associated Wall Type</b>	built in modern wall		0.638
<b>Plate Text</b>			
<b>Interpolated Text</b>	HOLY-HEAD 35 BANGOR 10 C.CURIG 4M-3F		

<b>Milestone</b>	<b>36</b>		
------------------	-----------	--	--



<b>Project No</b>	783	<b>Planlet No</b>	23
<b>Listed Building No</b>	17822		
<b>NGR</b>	SH 6781 6045		
<b>Stone and Plate</b>	No	<b>Stone only</b>	Yes
<b>Original Location</b>	No	<b>New Location</b>	No
<b>Missing</b>	No		
<b>Digital Photo</b>		<b>B/W Photo</b>	B/W 10.3
<b>Height</b>	0	<b>Buried Depth</b>	
<b>Location</b>			
<b>Associated Wall Type</b>			
<b>Plate Text</b>			
<b>Interpolated Text</b>	HOLY-HEAD 36 BANGOR 11 C.CURIG 3M-3F		

<b>Milestone</b>	<b>37</b>		
<b>Project No</b>	309C		
<b>Listed Building No</b>	17820	<b>Planlet No</b>	23
<b>NGR</b>	SH 6939 6010		
<b>Stone and Plate</b>	Yes	<b>Stone only</b>	No
<b>Original Location</b>	Yes	<b>New Location</b>	No
<b>Missing</b>	No		
<b>Digital Photo</b>		<b>B/W Photo</b>	B/W 10.12
<b>Height</b>	1.08	<b>Buried Depth</b>	0.42
<b>Location</b>	verge		
<b>Associated Wall Type</b>	in front of Telford wall		
<b>Plate Text</b>	HOLY-HEAD 37 BANGOR 12 C.CURIG 2M-3F		
<b>Interpolated Text</b>			

<b>Milestone</b>	<b>38</b>		
<b>Project No</b>	064		
<b>Listed Building No</b>	17918	<b>Planlet No</b>	25
<b>NGR</b>	SH 7085 5945		
<b>Stone and Plate</b>	Yes	<b>Stone only</b>	No
<b>Original Location</b>	Yes	<b>New Location</b>	No
<b>Missing</b>	No		
<b>Digital Photo</b>		<b>B/W Photo</b>	B/W 10.14
<b>Height</b>	0	<b>Buried Depth</b>	
<b>Location</b>			
<b>Associated Wall Type</b>			
<b>Plate Text</b>	HOLY-HEAD 38 BANGOR 13 C.CURIG 1M-3F		
<b>Interpolated Text</b>			

<b>Milestone</b>	<b>39</b>		
<b>Project No</b>	064A		
<b>Listed Building No</b>	17818	<b>Planlet No</b>	25
<b>NGR</b>	SH 7210 5861		
<b>Stone and Plate</b>	No	<b>Stone only</b>	No
<b>Original Location</b>	No	<b>New Location</b>	No
<b>Missing</b>	No		
<b>Digital Photo</b>		<b>B/W Photo</b>	No
<b>Height</b>	0	<b>Buried Depth</b>	
<b>Location</b>			
<b>Associated Wall Type</b>			
<b>Plate Text</b>			
<b>Interpolated Text</b>	HOLY-HEAD 39 BANGOR14 C.CURIG 3F		
<b>Comments</b>	Too dangerous to inspect on foot		

---

<b>Milestone</b>	<b>40</b>		
<b>Project No</b>	423		
<b>Listed Building No</b>	17821	<b>Planlet No</b>	26
<b>NGR</b>	SH 7298 5760		
<b>Stone and Plate</b>	Yes	<b>Stone only</b>	No
<b>Original Location</b>	Yes	<b>New Location</b>	No
<b>Missing</b>	No		
<b>Digital Photo</b>	HH40	<b>B/W Photo</b>	B/W 10.15
<b>Height</b>	0	<b>Buried Depth</b>	
<b>Location</b>			
<b>Associated Wall Type</b>			
<b>Plate Text</b>	HOLY-HEAD 40 C.CURIG 5 FURLONGS CERNIOGE 13M 6F		
<b>Interpolated Text</b>			

---

<b>Milestone</b>	<b>41</b>		
<b>Project No</b>	385		
<b>Listed Building No</b>	17819	<b>Planlet No</b>	26
<b>NGR</b>	SH 7428 5728		
<b>Stone and Plate</b>	No	<b>Stone only</b>	Yes
<b>Original Location</b>	Yes	<b>New Location</b>	No
<b>Missing</b>	No		
<b>Digital Photo</b>		<b>B/W Photo</b>	No
<b>Height</b>	1.05	<b>Buried Depth</b>	0.45
<b>Location</b>			
<b>Associated Wall Type</b>			
<b>Plate Text</b>	HOLY-HEAD 41 C.CURIG 1M 5F CERNIOGE 12M 6F		
<b>Interpolated Text</b>			

---

<b>Milestone</b>	<b>42</b>		
<b>Project No</b>	447		
<b>Listed Building No</b>	17824	<b>Planlet No</b>	27
<b>NGR</b>	SH 7569 5739		
<b>Stone and Plate</b>	Yes	<b>Stone only</b>	No
<b>Original Location</b>	Yes	<b>New Location</b>	No
<b>Missing</b>	No		
<b>Digital Photo</b>	HH42	<b>B/W Photo</b>	B/W 5.6-7
<b>Height</b>	0.96	<b>Buried Depth</b>	0.54
<b>Location</b>			
<b>Associated Wall Type</b>	Telford wall no arch		
<b>Plate Text</b>	HOLY-HEAD 42 C.CURIG 2M 5F CERNIOGE 11M-6F		
<b>Interpolated Text</b>			

---

<b>Milestone</b>	<b>43</b>		
<b>Project No</b>	401		
<b>Listed Building No</b>	17833	<b>Planlet No</b>	27
<b>NGR</b>	SH 7717 5755		
<b>Stone and Plate</b>	Yes	<b>Stone only</b>	No
<b>Original Location</b>	Yes	<b>New Location</b>	No
<b>Missing</b>	No		
<b>Digital Photo</b>	HH43	<b>B/W Photo</b>	No
<b>Height</b>	0	<b>Buried Depth</b>	
<b>Location</b>			
<b>Associated Wall Type</b>			
<b>Plate Text</b>	HOLY-HEAD 43 C.CURIG 3M 5F CERNIOGE 10M-6F		
<b>Interpolated Text</b>			

---

<b>Milestone</b>	<b>44</b>		
<b>Project No</b>	457		
<b>Listed Building No</b>	17829	<b>Planlet No</b>	28
<b>NGR</b>	SH 7838 5665		
<b>Stone and Plate</b>	Yes	<b>Stone only</b>	No
<b>Original Location</b>	Yes	<b>New Location</b>	No
<b>Missing</b>	No		
<b>Digital Photo</b>	HH44	<b>B/W Photo</b>	No
<b>Height</b>	1.09	<b>Buried Depth</b>	0.41
<b>Location</b>			
<b>Associated Wall Type</b>	set in rebuilt wall		
<b>Plate Text</b>	HOLY-HEAD 44 C.CURIG 4M 5F CERNIOGE 9M-6F		
<b>Interpolated Text</b>			
<hr/>			
<b>Milestone</b>	<b>45</b>		
<b>Project No</b>	381		
<b>Listed Building No</b>	17828	<b>Planlet No</b>	28
<b>NGR</b>	SH 7963 5604		
<b>Stone and Plate</b>	Yes	<b>Stone only</b>	No
<b>Original Location</b>	No	<b>New Location</b>	No
<b>Missing</b>	No		
<b>Digital Photo</b>	HH45	<b>B/W Photo</b>	B/W 5.4-5, CP 2.2-3
<b>Height</b>	0.985	<b>Buried Depth</b>	0.513
<b>Location</b>	Footpath		
<b>Associated Wall Type</b>	in front of rebuilt wall		
<b>Plate Text</b>	HOLY-HEAD 45 C.CURIG 5M 5F CERNIOGE 8M-6F		
<b>Interpolated Text</b>			
<hr/>			
<b>Milestone</b>	<b>46</b>		
<b>Project No</b>	1001		
<b>Listed Building No</b>		<b>Planlet No</b>	30
<b>NGR</b>	SH 8007 5464		
<b>Stone and Plate</b>	Yes	<b>Stone only</b>	No
<b>Original Location</b>	Yes	<b>New Location</b>	No
<b>Missing</b>	No		
<b>Digital Photo</b>		<b>B/W Photo</b>	No
<b>Height</b>	1.02	<b>Buried Depth</b>	0.48
<b>Location</b>			
<b>Associated Wall Type</b>			
<b>Plate Text</b>	HOLY-HEAD 46 C.CURIG 6M 5F CERNIOGE 7M-6F		
<b>Interpolated Text</b>			
<hr/>			
<b>Milestone</b>	<b>47</b>		
<b>Project No</b>	511		
<b>Listed Building No</b>		<b>Planlet No</b>	30
<b>NGR</b>	SH 8110 5355		
<b>Stone and Plate</b>	Yes	<b>Stone only</b>	No
<b>Original Location</b>	Yes	<b>New Location</b>	No
<b>Missing</b>	No		
<b>Digital Photo</b>	HH47	<b>B/W Photo</b>	B/W 10.27
<b>Height</b>	0	<b>Buried Depth</b>	
<b>Location</b>	verge		
<b>Associated Wall Type</b>	none		
<b>Plate Text</b>	HOLY-HEAD 47 C.CURIG 7M 5F CERNIOGE 6M-6F		
<b>Interpolated Text</b>			

---

<b>Milestone</b>	<b>48</b>		
<b>Project No</b>	771		
<b>Listed Building No</b>		<b>Planlet No</b>	30
<b>NGR</b>	SH 8241 5271		
<b>Stone and Plate</b>	Yes	<b>Stone only</b>	No
<b>Original Location</b>	Yes	<b>New Location</b>	No
<b>Missing</b>	No		
<b>Digital Photo</b>	HH48	<b>B/W Photo</b>	B/W 10.29
<b>Height</b>	0.9	<b>Buried Depth</b>	0.6
<b>Location</b>	verge		
<b>Associated Wall Type</b>	with remnant of arched wall		
<b>Plate Text</b>	HOLY-HEAD 48 C.CURIG 8M 5F CERNIOGE 5M-6F		
<b>Interpolated Text</b>			

---

<b>Milestone</b>	<b>49</b>		
<b>Project No</b>	473		
<b>Listed Building No</b>		<b>Planlet No</b>	31
<b>NGR</b>	SH 8349 5083		
<b>Stone and Plate</b>	No	<b>Stone only</b>	Yes
<b>Original Location</b>	No	<b>New Location</b>	No
<b>Missing</b>	No		
<b>Digital Photo</b>	HH49	<b>B/W Photo</b>	B/W 10.32
<b>Height</b>	0.93	<b>Buried Depth</b>	0.52
<b>Location</b>	verge		
<b>Associated Wall Type</b>	rebuilt wall behind		
<b>Plate Text</b>			
<b>Interpolated Text</b>	HOLY-HEAD 49 C.CURIG 9M 5F CERNIOGE 4M-6F		

---

<b>Milestone</b>	<b>50</b>		
<b>Project No</b>	483		
<b>Listed Building No</b>		<b>Planlet No</b>	31
<b>NGR</b>	SH 8348 5185		
<b>Stone and Plate</b>	No	<b>Stone only</b>	Yes
<b>Original Location</b>	No	<b>New Location</b>	No
<b>Missing</b>	No		
<b>Digital Photo</b>		<b>B/W Photo</b>	No
<b>Height</b>	1.05	<b>Buried Depth</b>	0.45
<b>Location</b>	road		
<b>Associated Wall Type</b>	in front of modern wall		
<b>Plate Text</b>			
<b>Interpolated Text</b>	HOLY-HEAD 50 C.CURIG 10M 5F CERNIOGE 3M-6F		

---

<b>Milestone</b>	<b>51</b>		
<b>Project No</b>	515		
<b>Listed Building No</b>		<b>Planlet No</b>	32
<b>NGR</b>	SH 8644 5139		
<b>Stone and Plate</b>	No	<b>Stone only</b>	Yes
<b>Original Location</b>	No	<b>New Location</b>	Yes
<b>Missing</b>	No		
<b>Digital Photo</b>		<b>B/W Photo</b>	No
<b>Height</b>	0.79	<b>Buried Depth</b>	0.71
<b>Location</b>	road embankment		
<b>Associated Wall Type</b>			
<b>Plate Text</b>			
<b>Interpolated Text</b>	HOLY-HEAD 51 C.CURIG 11M 5F CERNIOGE 2M-6F		

---

<b>Milestone</b>	<b>52</b>		
<b>Project No</b>	527		
<b>Listed Building No</b>		<b>Planlet No</b>	33
<b>NGR</b>	SH 8803 5148		
<b>Stone and Plate</b>	No	<b>Stone only</b>	Yes
<b>Original Location</b>	No	<b>New Location</b>	No
<b>Missing</b>	No		
<b>Digital Photo</b>		<b>B/W Photo</b>	No
<b>Height</b>	0.87	<b>Buried Depth</b>	0.63
<b>Location</b>			
<b>Associated Wall Type</b>	arched Telford wall		
<b>Plate Text</b>			
<b>Interpolated Text</b>	HOLY-HEAD 52 C.CURIG 12M 5F CERNIOGE 1M-6F		
<hr/>			
<b>Milestone</b>	<b>53</b>		
<b>Project No</b>	553		
<b>Listed Building No</b>		<b>Planlet No</b>	33
<b>NGR</b>	SH 8948 5091		
<b>Stone and Plate</b>	No	<b>Stone only</b>	Yes
<b>Original Location</b>	Yes	<b>New Location</b>	No
<b>Missing</b>	No		
<b>Digital Photo</b>	HH53	<b>B/W Photo</b>	B/W 10.33
<b>Height</b>	1.12	<b>Buried Depth</b>	0.38
<b>Location</b>	Footpath		
<b>Associated Wall Type</b>	rebuilt?		
<b>Plate Text</b>			
<b>Interpolated Text</b>	HOLY-HEAD 53 C.CURIG 13M 5F CERNIOGE 6F		
<hr/>			
<b>Milestone</b>	<b>54</b>		
<b>Project No</b>	567B		
<b>Listed Building No</b>		<b>Planlet No</b>	34
<b>NGR</b>	SH 9098 5043		
<b>Stone and Plate</b>	No	<b>Stone only</b>	No
<b>Original Location</b>	No	<b>New Location</b>	No
<b>Missing</b>	Yes		
<b>Digital Photo</b>		<b>B/W Photo</b>	No
<b>Height</b>		<b>Buried Depth</b>	
<b>Location</b>			
<b>Associated Wall Type</b>			
<b>Plate Text</b>			
<b>Interpolated Text</b>	HOLY-HEAD 54 CERNIOGE 2F CORWEN 12M-6F		
<hr/>			
<b>Milestone</b>	<b>55</b>		
<b>Project No</b>	573		
<b>Listed Building No</b>		<b>Planlet No</b>	35
<b>NGR</b>	SH 9255 5012		
<b>Stone and Plate</b>	No	<b>Stone only</b>	Yes
<b>Original Location</b>	Yes	<b>New Location</b>	No
<b>Missing</b>	No		
<b>Digital Photo</b>		<b>B/W Photo</b>	No
<b>Height</b>	0.66	<b>Buried Depth</b>	0.84
<b>Location</b>			
<b>Associated Wall Type</b>	wall? Hedge above		
<b>Plate Text</b>			
<b>Interpolated Text</b>	HOLY-HEAD 55 CERNIOGE 1M-2F CORWEN 11M-6F		

---

<b>Milestone</b>	<b>56</b>		
<b>Project No</b>	575		
<b>Listed Building No</b>		<b>Planlet No</b>	36
<b>NGR</b>	SH 9402 4940		
<b>Stone and Plate</b>	No	<b>Stone only</b>	Yes
<b>Original Location</b>	No	<b>New Location</b>	No
<b>Missing</b>	No		
<b>Digital Photo</b>		<b>B/W Photo</b>	No
<b>Height</b>	1.06	<b>Buried Depth</b>	0.44
<b>Location</b>	grass verge		
<b>Associated Wall Type</b>			
<b>Plate Text</b>			
<b>Interpolated Text</b>	HOLY-HEAD 56 CERNIOGE 2M-2F CORWEN 10M-6F		

---

<b>Milestone</b>	<b>57</b>		
<b>Project No</b>	1005		
<b>Listed Building No</b>	19340	<b>Planlet No</b>	37
<b>NGR</b>	SH 9526 4854		
<b>Stone and Plate</b>	Yes	<b>Stone only</b>	No
<b>Original Location</b>	Yes	<b>New Location</b>	No
<b>Missing</b>	No		
<b>Digital Photo</b>		<b>B/W Photo</b>	B/W 10.35
<b>Height</b>	1.16	<b>Buried Depth</b>	0.34
<b>Location</b>			
<b>Associated Wall Type</b>	rebuilt wall		
<b>Plate Text</b>	HOLY-HEAD 57 CERNIOGE 3M-2F CORWEN 9M-6F		
<b>Interpolated Text</b>			

---

<b>Milestone</b>	<b>58</b>		
<b>Project No</b>	581		
<b>Listed Building No</b>		<b>Planlet No</b>	38
<b>NGR</b>	SH 9586 4702		
<b>Stone and Plate</b>	No	<b>Stone only</b>	Yes
<b>Original Location</b>	Yes	<b>New Location</b>	No
<b>Missing</b>	No		
<b>Digital Photo</b>		<b>B/W Photo</b>	No
<b>Height</b>	0.75	<b>Buried Depth</b>	0.748
<b>Location</b>	verge		
<b>Associated Wall Type</b>			
<b>Plate Text</b>			
<b>Interpolated Text</b>	HOLY-HEAD 58 CERNIOGE 4M-2F CORWEN 8M-6F		

---

<b>Milestone</b>	<b>59</b>		
<b>Project No</b>	591a		
<b>Listed Building No</b>		<b>Planlet No</b>	38
<b>NGR</b>	SH 9707 4593		
<b>Stone and Plate</b>	No	<b>Stone only</b>	Yes
<b>Original Location</b>	Yes	<b>New Location</b>	No
<b>Missing</b>	No		
<b>Digital Photo</b>		<b>B/W Photo</b>	B/W 11.1
<b>Height</b>	0.795	<b>Buried Depth</b>	0.7
<b>Location</b>	road		
<b>Associated Wall Type</b>	in front of Telford? wall		
<b>Plate Text</b>			
<b>Interpolated Text</b>	HOLY-HEAD 59 CERNIOGE 5M-2F CORWEN 7M-6F		

---

<b>Milestone</b>	<b>60</b>		
<b>Project No</b>	591		
<b>Listed Building No</b>		<b>Planlet No</b>	39/41
<b>NGR</b>			
<b>Stone and Plate</b>	No	<b>Stone only</b>	No
<b>Original Location</b>	No	<b>New Location</b>	No
<b>Missing</b>	Yes		
<b>Digital Photo</b>	HH60	<b>B/W Photo</b>	No
<b>Height</b>	0	<b>Buried Depth</b>	
<b>Location</b>			
<b>Associated Wall Type</b>			
<b>Plate Text</b>			
<b>Interpolated Text</b>	HOLY-HEAD 60 CERNIOGE 6M-2F CORWEN 6M-6F		

<b>Milestone</b>	<b>61</b>		
<b>Project No</b>	088		
<b>Listed Building No</b>	19597	<b>Planlet No</b>	40
<b>NGR</b>	SH 9952 4429		
<b>Stone and Plate</b>	Yes	<b>Stone only</b>	No
<b>Original Location</b>	No	<b>New Location</b>	Yes
<b>Missing</b>	No		
<b>Digital Photo</b>		<b>B/W Photo</b>	B/W 6.29-32
<b>Height</b>	1.23	<b>Buried Depth</b>	0.27
<b>Location</b>	verge		
<b>Associated Wall Type</b>			
<b>Plate Text</b>	HOLY-HEAD 61 CERNIOGE 7M-2F CORWEN 5M-6F		
<b>Interpolated Text</b>			

<b>Milestone</b>	<b>62</b>		
<b>Project No</b>	094		
<b>Listed Building No</b>		<b>Planlet No</b>	41
<b>NGR</b>	SJ 0090 4485		
<b>Stone and Plate</b>	No	<b>Stone only</b>	Yes
<b>Original Location</b>	Yes	<b>New Location</b>	No
<b>Missing</b>	No		
<b>Digital Photo</b>		<b>B/W Photo</b>	B/W 11.2
<b>Height</b>	0.59	<b>Buried Depth</b>	0.91
<b>Location</b>	Footpath		
<b>Associated Wall Type</b>	Telford wall with arched remnant		
<b>Plate Text</b>			
<b>Interpolated Text</b>	HOLY-HEAD 62 CERNIOGE 8M-2F CORWEN 4M-6F		

<b>Milestone</b>	<b>63</b>		
<b>Project No</b>	094A		
<b>Listed Building No</b>		<b>Planlet No</b>	42
<b>NGR</b>	SJ 0212 4404		
<b>Stone and Plate</b>	No	<b>Stone only</b>	Yes
<b>Original Location</b>	Yes	<b>New Location</b>	No
<b>Missing</b>	No		
<b>Digital Photo</b>		<b>B/W Photo</b>	No
<b>Height</b>	0.65	<b>Buried Depth</b>	0.85
<b>Location</b>	Footpath		
<b>Associated Wall Type</b>	set in Telford wall		
<b>Plate Text</b>			
<b>Interpolated Text</b>	HOLY-HEAD 63 CERNIOGE 9M-2F CORWEN 3M-6F		

<b>Milestone</b>	<b>64</b>		
<b>Project No</b>	629		
<b>Listed Building No</b>		<b>Planlet No</b>	42
<b>NGR</b>	SJ 0355 4355		
<b>Stone and Plate</b>	No	<b>Stone only</b>	Yes
<b>Original Location</b>	Yes	<b>New Location</b>	No
<b>Missing</b>	No		
<b>Digital Photo</b>		<b>B/W Photo</b>	No
<b>Height</b>	0.65	<b>Buried Depth</b>	0.85
<b>Location</b>	Footpath		
<b>Associated Wall Type</b>	set in Telford wall		
<b>Plate Text</b>			
<b>Interpolated Text</b>	HOLY-HEAD 64 CERNIOGE 10M-2F CORWEN 2M-6F		

<b>Milestone</b>	<b>65</b>		
<b>Project No</b>			
<b>Listed Building No</b>		<b>Planlet No</b>	42
<b>NGR</b>			
<b>Stone and Plate</b>	No	<b>Stone only</b>	No
<b>Original Location</b>	No	<b>New Location</b>	No
<b>Missing</b>	Yes		
<b>Digital Photo</b>		<b>B/W Photo</b>	No
<b>Height</b>	0	<b>Buried Depth</b>	
<b>Location</b>			
<b>Associated Wall Type</b>			
<b>Plate Text</b>			
<b>Interpolated Text</b>	HOLY-HEAD 65 CERNIOGE 11M-2F CORWEN 1M-6F		

<b>Milestone</b>	<b>66</b>		
<b>Project No</b>	633		
<b>Listed Building No</b>		<b>Planlet No</b>	43
<b>NGR</b>	SJ 0670 4349		
<b>Stone and Plate</b>	No	<b>Stone only</b>	Yes
<b>Original Location</b>	No	<b>New Location</b>	No
<b>Missing</b>	No		
<b>Digital Photo</b>		<b>B/W Photo</b>	B/W 11.3
<b>Height</b>	0.45	<b>Buried Depth</b>	1.048
<b>Location</b>	Footpath /part buried		
<b>Associated Wall Type</b>			
<b>Plate Text</b>			
<b>Interpolated Text</b>	HOLY-HEAD 66 CERNIOGE 12M-2F CORWEN 6F		

<b>Milestone</b>	<b>67</b>		
<b>Project No</b>	637		
<b>Listed Building No</b>		<b>Planlet No</b>	43
<b>NGR</b>	SJ 0819 4340		
<b>Stone and Plate</b>	No	<b>Stone only</b>	Yes
<b>Original Location</b>	Yes	<b>New Location</b>	No
<b>Missing</b>	No		
<b>Digital Photo</b>		<b>B/W Photo</b>	No
<b>Height</b>	0.975	<b>Buried Depth</b>	0.523
<b>Location</b>	Footpath		
<b>Associated Wall Type</b>			
<b>Plate Text</b>			
<b>Interpolated Text</b>	HOLY-HEAD 67 CORWEN 2F LLANGOLLEN 9M 6F		



<b>Milestone</b>	<b>68</b>		
<b>Project No</b>	643		
<b>Listed Building No</b>		<b>Planlet No</b>	43
<b>NGR</b>	SJ 0980 4341		
<b>Stone and Plate</b>	No	<b>Stone only</b>	Yes
<b>Original Location</b>	No	<b>New Location</b>	No
<b>Missing</b>	No		
<b>Digital Photo</b>		<b>B/W Photo</b>	No
<b>Height</b>	0.8	<b>Buried Depth</b>	0.69
<b>Location</b>	Footpath		
<b>Associated Wall Type</b>			
<b>Plate Text</b>			
<b>Interpolated Text</b>	HOLY-HEAD 68 CORWEN 1M 2F LLANGOLLEN 8M 6F		

<b>Milestone</b>	<b>69</b>		
<b>Project No</b>	643A		
<b>Listed Building No</b>		<b>Planlet No</b>	45
<b>NGR</b>			
<b>Stone and Plate</b>	No	<b>Stone only</b>	No
<b>Original Location</b>	No	<b>New Location</b>	No
<b>Missing</b>	Yes		
<b>Digital Photo</b>		<b>B/W Photo</b>	No
<b>Height</b>	0	<b>Buried Depth</b>	
<b>Location</b>			
<b>Associated Wall Type</b>			
<b>Plate Text</b>			
<b>Interpolated Text</b>	HOLY-HEAD 69 CORWEN 2M 2F LLANGOLLEN 7M 6F		

<b>Milestone</b>	<b>70</b>		
<b>Project No</b>	633C		
<b>Listed Building No</b>		<b>Planlet No</b>	46
<b>NGR</b>	SJ 12654300		
<b>Stone and Plate</b>	No	<b>Stone only</b>	Yes
<b>Original Location</b>	No	<b>New Location</b>	No
<b>Missing</b>	No		
<b>Digital Photo</b>		<b>B/W Photo</b>	No
<b>Height</b>	0.72	<b>Buried Depth</b>	0.78
<b>Location</b>	Footpath		
<b>Associated Wall Type</b>	set in Telford arch		
<b>Plate Text</b>			
<b>Interpolated Text</b>	HOLY-HEAD 70 CORWEN 3M 2F LLANGOLLEN 6M 6F		

<b>Milestone</b>	<b>71</b>		
<b>Project No</b>			
<b>Listed Building No</b>		<b>Planlet No</b>	46
<b>NGR</b>			
<b>Stone and Plate</b>	No	<b>Stone only</b>	No
<b>Original Location</b>	No	<b>New Location</b>	No
<b>Missing</b>	Yes		
<b>Digital Photo</b>		<b>B/W Photo</b>	No
<b>Height</b>	0	<b>Buried Depth</b>	
<b>Location</b>			
<b>Associated Wall Type</b>			
<b>Plate Text</b>			
<b>Interpolated Text</b>	HOLY-HEAD 71 CORWEN 4M 2F LLANGOLLEN 5M 6F		

<b>Milestone</b>	<b>72</b>		
<b>Project No</b>	669		
<b>Listed Building No</b>		<b>Planlet No</b>	47
<b>NGR</b>	SJ 1598 4239		
<b>Stone and Plate</b>	No	<b>Stone only</b>	Yes
<b>Original Location</b>	Yes	<b>New Location</b>	No
<b>Missing</b>	No		
<b>Digital Photo</b>		<b>B/W Photo</b>	B/W 11.6
<b>Height</b>	1.12	<b>Buried Depth</b>	0.38
<b>Location</b>	base of embankment		
<b>Associated Wall Type</b>			
<b>Plate Text</b>			
<b>Interpolated Text</b>	HOLY-HEAD 72 CORWEN 5M 2F LLANGOLLEN 4M 6F		

<b>Milestone</b>	<b>73</b>		
<b>Project No</b>	250		
<b>Listed Building No</b>		<b>Planlet No</b>	48
<b>NGR</b>	SJ 1663 4225		
<b>Stone and Plate</b>	No	<b>Stone only</b>	Yes
<b>Original Location</b>	No	<b>New Location</b>	Yes
<b>Missing</b>	No		
<b>Digital Photo</b>		<b>B/W Photo</b>	B/W 11.8
<b>Height</b>	0.95	<b>Buried Depth</b>	0.548
<b>Location</b>	lay-by		
<b>Associated Wall Type</b>	set in rebuilt wall		
<b>Plate Text</b>			
<b>Interpolated Text</b>	HOLY-HEAD 73 CORWEN 6M 2F LLANGOLLEN 3M 6F		

<b>Milestone</b>	<b>74</b>		
<b>Project No</b>	675		
<b>Listed Building No</b>		<b>Planlet No</b>	48
<b>NGR</b>	SJ 1724 4330		
<b>Stone and Plate</b>	No	<b>Stone only</b>	Yes
<b>Original Location</b>	Yes	<b>New Location</b>	No
<b>Missing</b>	No		
<b>Digital Photo</b>		<b>B/W Photo</b>	No
<b>Height</b>	0.73	<b>Buried Depth</b>	0.77
<b>Location</b>			
<b>Associated Wall Type</b>	modern precast panels		
<b>Plate Text</b>			
<b>Interpolated Text</b>	HOLY-HEAD 74 CORWEN 7M 2F LLANGOLLEN 2M 6F		

<b>Milestone</b>	<b>75</b>		
<b>Project No</b>	679		
<b>Listed Building No</b>		<b>Planlet No</b>	48
<b>NGR</b>	SJ 1868 4318		
<b>Stone and Plate</b>	No	<b>Stone only</b>	Yes
<b>Original Location</b>	Yes	<b>New Location</b>	No
<b>Missing</b>	No		
<b>Digital Photo</b>		<b>B/W Photo</b>	B/W 11.10
<b>Height</b>	1.02	<b>Buried Depth</b>	0.48
<b>Location</b>	Footpath		
<b>Associated Wall Type</b>	railway wall		
<b>Plate Text</b>			
<b>Interpolated Text</b>	HOLY-HEAD 75 CORWEN 8M 2F LLANGOLLEN 1M 6F		

<b>Milestone</b>	<b>76</b>		
<b>Project No</b>	685		
<b>Listed Building No</b>		<b>Planlet No</b>	49
<b>NGR</b>	SJ 1980 4276		
<b>Stone and Plate</b>	No	<b>Stone only</b>	Yes
<b>Original Location</b>	No	<b>New Location</b>	No
<b>Missing</b>	No		
<b>Digital Photo</b>		<b>B/W Photo</b>	B/W 11.13
<b>Height</b>	0	<b>Buried Depth</b>	
<b>Location</b>	Footpath		
<b>Associated Wall Type</b>			
<b>Plate Text</b>			
<b>Interpolated Text</b>	HOLY-HEAD 76 CORWEN 9M 2F LLANGOLLEN 6F		

<b>Milestone</b>	<b>77</b>		
<b>Project No</b>	685A		
<b>Listed Building No</b>		<b>Planlet No</b>	49
<b>NGR</b>	SJ 2190 4190		
<b>Stone and Plate</b>	No	<b>Stone only</b>	Yes
<b>Original Location</b>	Yes	<b>New Location</b>	No
<b>Missing</b>	No		
<b>Digital Photo</b>		<b>B/W Photo</b>	B/W 11.14
<b>Height</b>	1.16	<b>Buried Depth</b>	1.05
<b>Location</b>	Footpath		
<b>Associated Wall Type</b>			
<b>Plate Text</b>			
<b>Interpolated Text</b>	HOLY-HEAD 77 LLANGOLLEN 2F CHIRK-B 6M-5F		

<b>Milestone</b>	<b>78</b>		
<b>Project No</b>	689		
<b>Listed Building No</b>		<b>Planlet No</b>	50
<b>NGR</b>	SJ 2347 4147		
<b>Stone and Plate</b>	No	<b>Stone only</b>	Yes
<b>Original Location</b>	Yes	<b>New Location</b>	No
<b>Missing</b>	No		
<b>Digital Photo</b>		<b>B/W Photo</b>	B/W 11.17
<b>Height</b>	0.97	<b>Buried Depth</b>	0.53
<b>Location</b>			
<b>Associated Wall Type</b>	rebuilt wall		
<b>Plate Text</b>			
<b>Interpolated Text</b>	HOLY-HEAD 78 LLANGOLLEN 1M-2F CHIRK-B 5M-5F		

<b>Milestone</b>	<b>79</b>		
<b>Project No</b>	689A		
<b>Listed Building No</b>		<b>Planlet No</b>	50
<b>NGR</b>	SJ 2479 4114		
<b>Stone and Plate</b>	No	<b>Stone only</b>	Yes
<b>Original Location</b>	Yes	<b>New Location</b>	No
<b>Missing</b>	No		
<b>Digital Photo</b>		<b>B/W Photo</b>	B/W 11.19
<b>Height</b>	1.01	<b>Buried Depth</b>	0.49
<b>Location</b>	road		
<b>Associated Wall Type</b>	set in Telford arch		
<b>Plate Text</b>			
<b>Interpolated Text</b>	HOLY-HEAD 79 LLANGOLLEN 2M-2F CHIRK-B 4M-5F		

<b>Milestone</b>	<b>80</b>		
<b>Project No</b>	689B		
<b>Listed Building No</b>		<b>Planlet No</b>	51
<b>NGR</b>	SJ 2638 4102		
<b>Stone and Plate</b>	No	<b>Stone only</b>	Yes
<b>Original Location</b>	Yes	<b>New Location</b>	No
<b>Missing</b>	No		
<b>Digital Photo</b>		<b>B/W Photo</b>	B/W 11.21
<b>Height</b>	0.97	<b>Buried Depth</b>	0.53
<b>Location</b>	verge		
<b>Associated Wall Type</b>	set in Telford arch		
<b>Plate Text</b>			
<b>Interpolated Text</b>	HOLY-HEAD 80 LLANGOLLEN 3M-2F CHIRK-B 3M-5F		

<b>Milestone</b>	<b>81</b>		
<b>Project No</b>	324		
<b>Listed Building No</b>		<b>Planlet No</b>	52
<b>NGR</b>	SJ 2779 4092		
<b>Stone and Plate</b>	No	<b>Stone only</b>	Yes
<b>Original Location</b>	Yes	<b>New Location</b>	No
<b>Missing</b>	No		
<b>Digital Photo</b>		<b>B/W Photo</b>	B/W 11.25
<b>Height</b>	0.69	<b>Buried Depth</b>	0.81
<b>Location</b>	verge		
<b>Associated Wall Type</b>	set in Telford arch		
<b>Plate Text</b>			
<b>Interpolated Text</b>	HOLY-HEAD 81 LLANGOLLEN 4M-2F CHIRK-B 2M-5F		

<b>Milestone</b>	<b>82</b>		
<b>Project No</b>			
<b>Listed Building No</b>		<b>Planlet No</b>	53
<b>NGR</b>			
<b>Stone and Plate</b>	No	<b>Stone only</b>	No
<b>Original Location</b>	No	<b>New Location</b>	No
<b>Missing</b>	Yes		
<b>Digital Photo</b>		<b>B/W Photo</b>	No
<b>Height</b>	0	<b>Buried Depth</b>	
<b>Location</b>			
<b>Associated Wall Type</b>			
<b>Plate Text</b>			
<b>Interpolated Text</b>	HOLY-HEAD 82 LLANGOLLEN 5M-2F CHIRK-B 1M-5F		

<b>Milestone</b>	<b>83</b>		
<b>Project No</b>	334		
<b>Listed Building No</b>	20236	<b>Planlet No</b>	53
<b>NGR</b>	SJ 2903 3811		
<b>Stone and Plate</b>	Yes	<b>Stone only</b>	No
<b>Original Location</b>	No	<b>New Location</b>	No
<b>Missing</b>	No		
<b>Digital Photo</b>	HH83	<b>B/W Photo</b>	No
<b>Height</b>	0	<b>Buried Depth</b>	
<b>Location</b>	verge		
<b>Associated Wall Type</b>	(hedge)		
<b>Plate Text</b>	HOLY-HEAD 83 LLANGOLLEN 6M-2F CHIRK-B 0M-5F		
<b>Interpolated Text</b>			

---

## 5. CONCLUSIONS

---

### 5.1 MILESTONE BURIED DEPTH

- 5.1.1 Telford's specification for the milestone indicated that the height of the stone from the top of the stone to the top of the plinth was 3' 11" (1.19m) and down to road surface was 4' 11" (1.498m). The designed buried foundation 2', which meant that the total length of the original stone was 6' 11" (2.104m). Measurements of key dimensions from surviving stones were compared with those of this specification and revealed that the deviation of the actual stones from the specification was in the order of only 1.2%. Consequently the specification appears to be fairly reliable. However, even if the stones were carved strictly according to the specification, there is no guarantee that the stones were inserted into the ground with the same level of accuracy. Consequently there is an uncertainty as to the precise original height of each stone above road level.
- 5.1.2 The present height of the stones varies considerably, between 0.45m and 1.17m, with an average of *c* 0.9m. If the specification height of the stone above ground (1.498m) was correctly applied by Telford's contractors, and the stones are now *in-situ* then this would suggest that the road level has been built up in places by as much as 1.04m, since the construction of Telford's road. Such a very considerable depth could potentially allow for the sub-surface survival of the surfaces of Telford's road.

---

## 6. BIBLIOGRAPHY

---

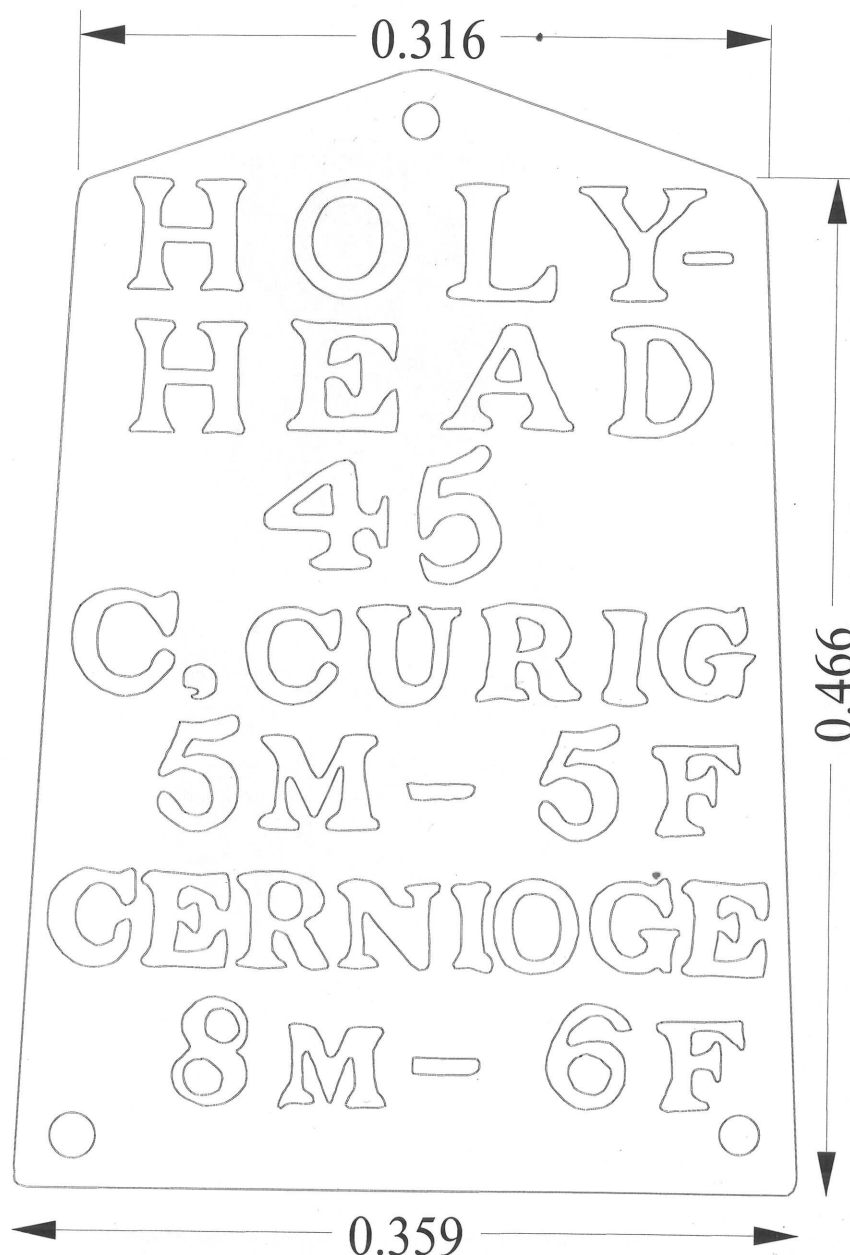
- Anon, 1992 *Pentrefoelas: Living History*, Clwyd
- Bracegirdle, B and Miles P, 1973 *Thomas Telford*, Newton Abbott
- Gibb, A, 1935 *The Story of Telford: the Rise of Civil Engineering*
- Harper, C G, 1902 *The Holyhead Road: the Mail-Coach Road to Dublin*, 2 (2nd ed), London
- Parnell, H, 1838 *A Treatise on Roads*, London
- Rickman, J (ed), 1882 *Life of Thomas Telford, Civil Engineer*, London
- Rolt, L T C, 1958 *Thomas Telford*
- Smiles, S, 1874 *Lives of the Engineers, 3: Metcalfe and Telford*, London
- Trinder, B, 1997 *Notes for a tour of the Telford Road*, Unpubl
- Trinder, B, 1998 *Notes on the Telford Road*, Unpubl

---

## ILLUSTRATIONS

---

- Fig 1 Scaled Drawing of Milestone 45 Plate  
Fig 2 Telford's Milestone Specification



LANCASTER UNIVERSITY  
ARCHAEOLOGICAL UNIT



STOREY INSTITUTE  
MEETING HOUSE LANE  
LANCASTER  
LA1 1TF

TEL: 01524 848666

PROJECT:

HOLYHEAD ROAD  
A5

DRAWING

Plate Plan

7859A5MS/plate.fcw

0 50 100mm

DRAWN BY: CS and JQ

DATE: December 1998

LOCATION:

KEY

TITLE:

Milestone 45 Plate Plan

COMMISSIONED BY:

CADW

Fig 1 Milestone 45 Plate Plan



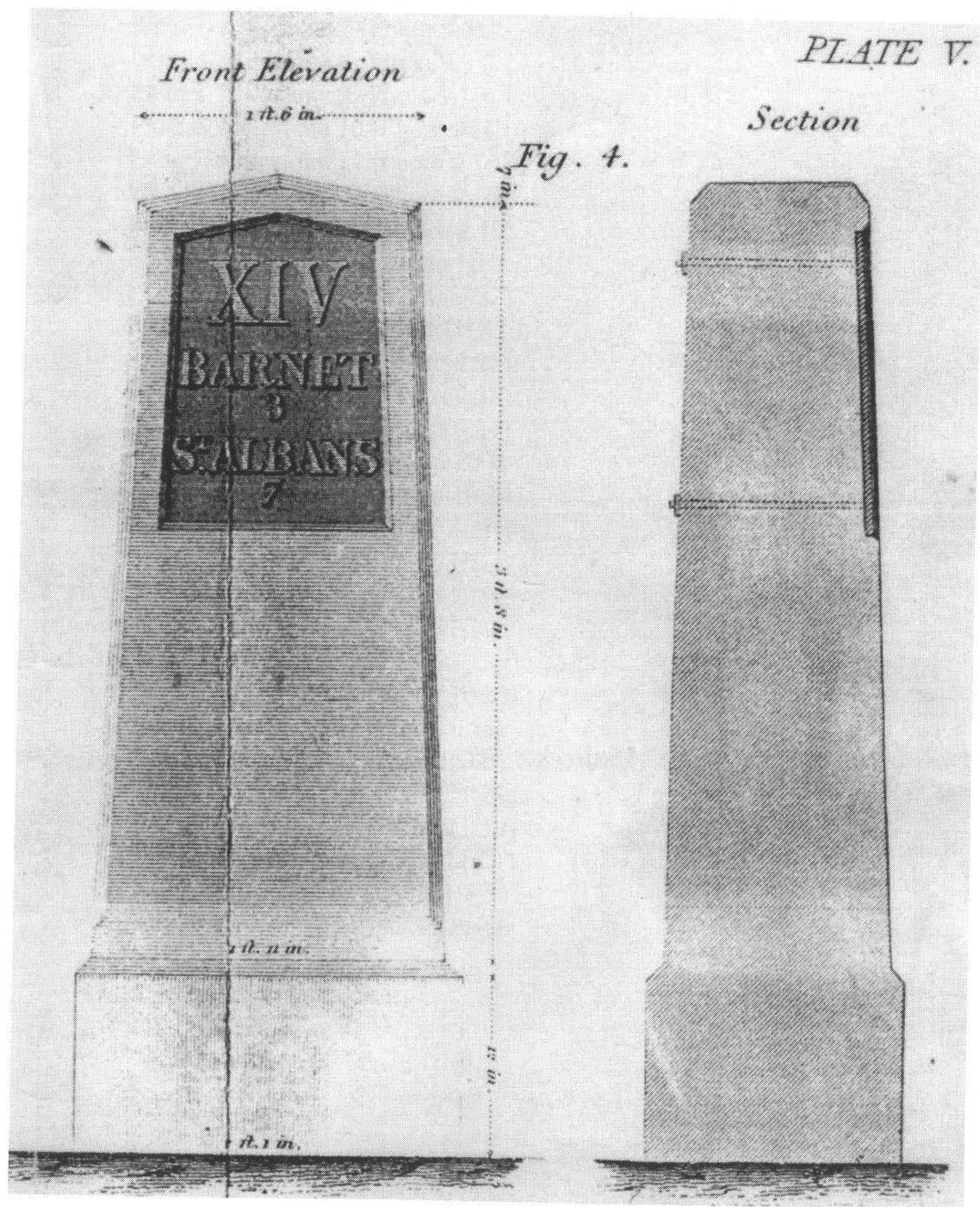


Fig 2 Telford's Milestone Specification

---

## PLATES

---

- Plate 1 Milestone 4 (Photo 9.2)
- Plate 2 Milestone 5 (Photo 9.3)
- Plate 3 Milestone 6 (Photo 9.6)
- Plate 4 Milestone 8 (Photo 9.9)
- Plate 5 Milestone 9 (Photo 9.10)
- Plate 6 Milestone 10 (Photo HH10)
- Plate 7 Milestone 11 (Photo 9.15)
- Plate 8 Milestone 12 (Photo 9.16)
- Plate 9 Milestone 13 (Photo 9.19)
- Plate 10 Milestone 17 (Photo HH17)
- Plate 11 Milestone 19 (Photo 9.22)
- Plate 12 Milestone 20 (Photo HH20)
- Plate 13 Milestone 21 (Photo 9.28)
- Plate 14 Milestone 30 (Photo 9.32)
- Plate 15 Milestone 31 (Photo 9.34)
- Plate 16 Milestone 35 (Photo 10.1)
- Plate 17 Milestone 38 (Photo 10.14)
- Plate 18 Milestone 40 (Photo HH40)
- Plate 19 Milestone 44 (Photo HH44)
- Plate 20 Milestone 45 (Photo HH45)
- Plate 21 Milestone 47 (Photo HH47)
- Plate 22 Milestone 49 (Photo 10.32)
- Plate 23 Milestone 57 (Photo 10.35)
- Plate 24 Milestone 47 (Photo 11.3)
- Plate 25 Milestone 67 (Provided by CADW)
- Plate 26 Milestone 75 (Photo 11.10)
- Plate 27 Milestone 79 (Photo 11.19)
- Plate 28 Milestone 80 (Photo 11.21)
- Plate 29 Milestone 83 (Photo HH83)
- Plate 30 Cast of Milestone 45 Plate

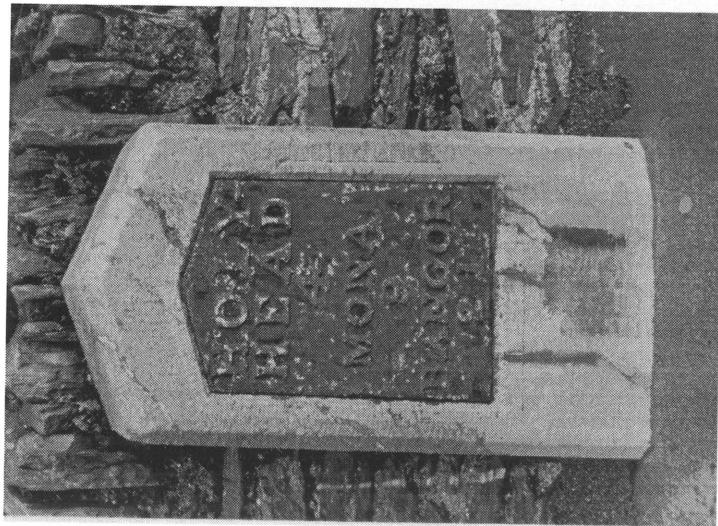


PLATE 1 – Milestone 4 – Photo 9.2

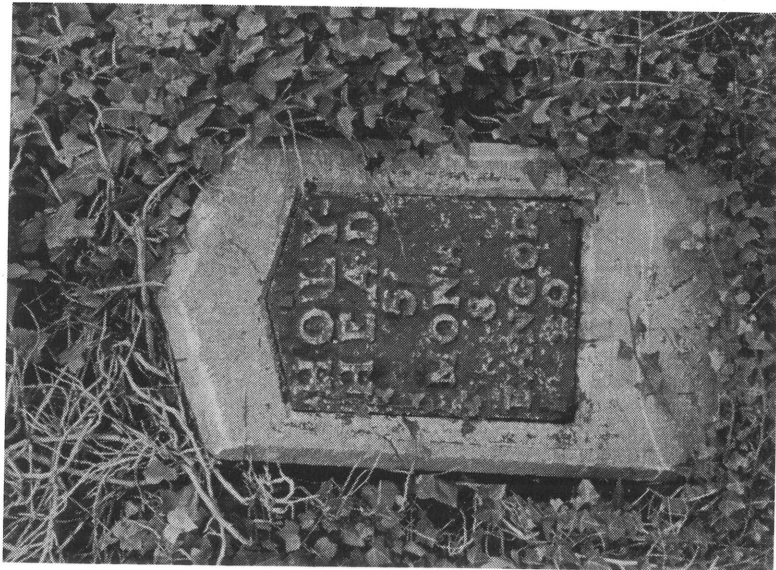


PLATE 2 – Milestone 5 – Photo 9.3

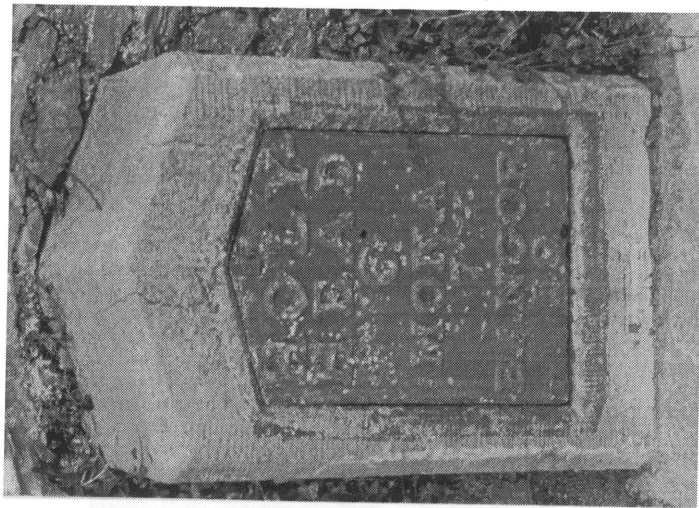


PLATE 3 – Milestone 6 Photo 9.6



PLATE 4 – Milestone 8 – Photo 9.9



PLATE 5 – Milestone 9 – Photo 9.10



PLATE 6 – Milestone 10 – Photo - HH10





PLATE 7 – Milestone 11 – Photo 9.15



PLATE 8 – Milestone 12 – Photo 9.16



PLATE 9 – Milestone 13 – Photo 9.19



PLATE 10 – Milestone 17 – Photo HH17



PLATE 11 – Milestone 19 – Photo 9.22

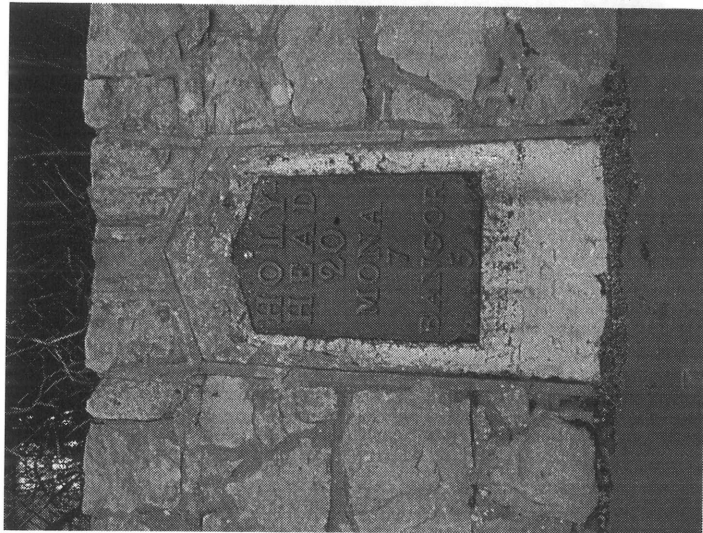


PLATE 12 – Milestone 20 – Photo HH20



PLATE 13 – Milestone 21 – Photo 9.28

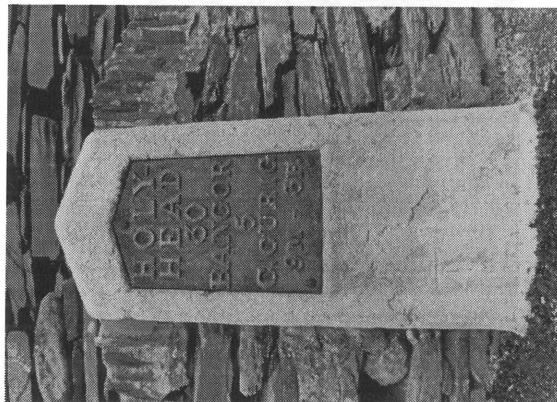


PLATE 14 – Milestone 30 – Photo 9.32

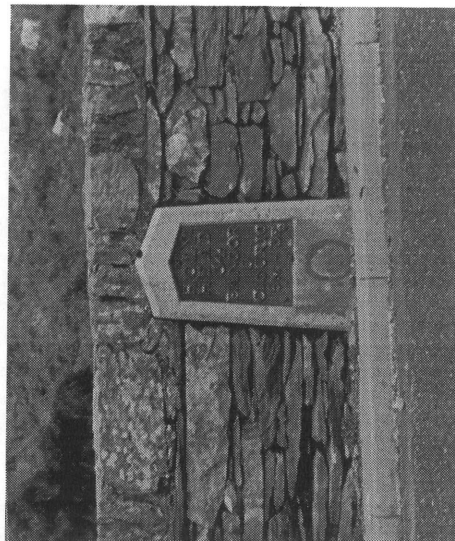


PLATE 15 – Milestone 31 – Photo 9.34

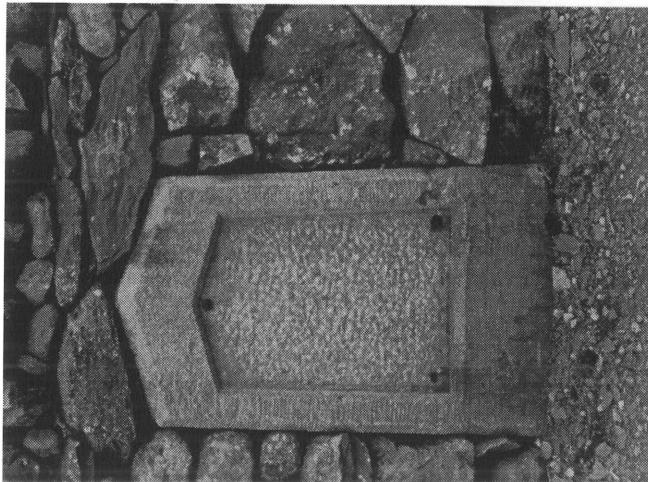


PLATE 16 – Milestone 35 – Photo 10.1

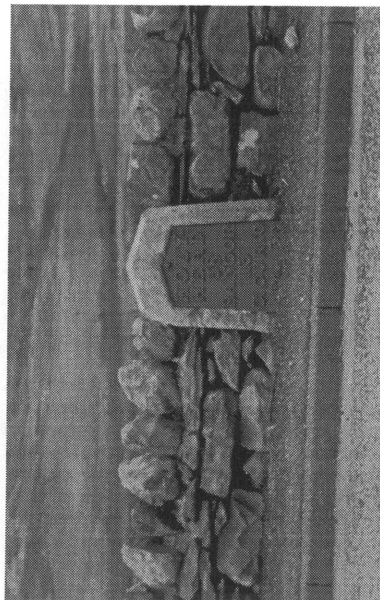


PLATE 17 – Milestone 38 – Photo 10.14

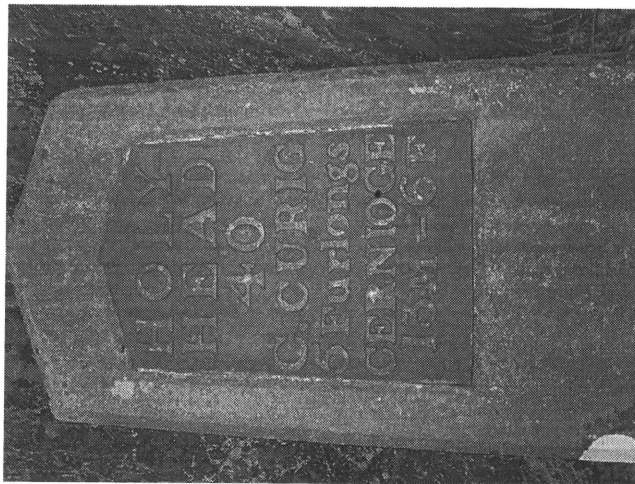


PLATE 18 – Milestone 40 – Photo HH40





PLATE 19 - Milestone 44 - Photo HH44

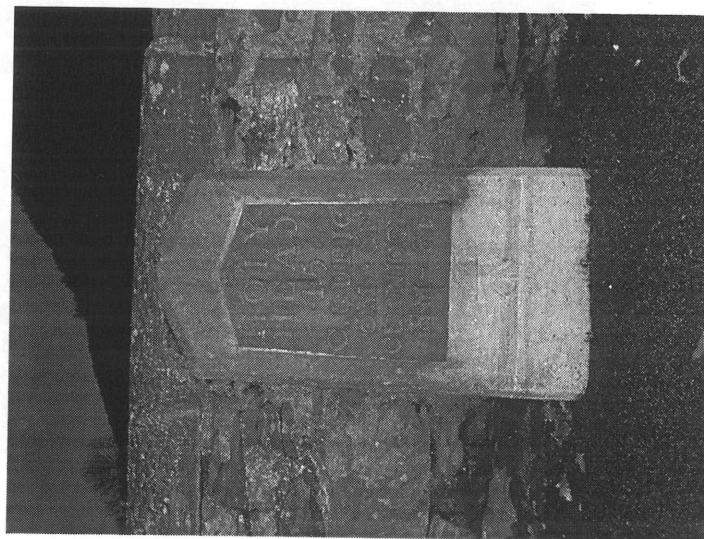


PLATE 20 - Milestone 45 - Photo HH45



PLATE 21 - Milestone 47 - Photo HH47



PLATE 22 – Milestone 49 – Photo 10.32



PLATE 23 – Milestone 57 – Photo 10.35

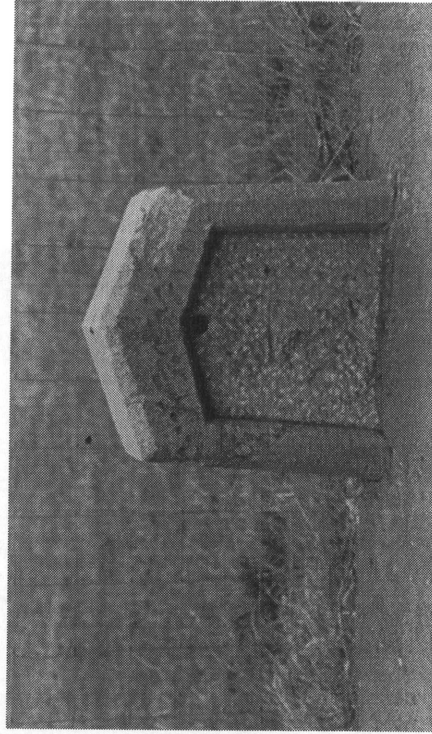


PLATE 24 – Milestone 47 – Photo 11.3

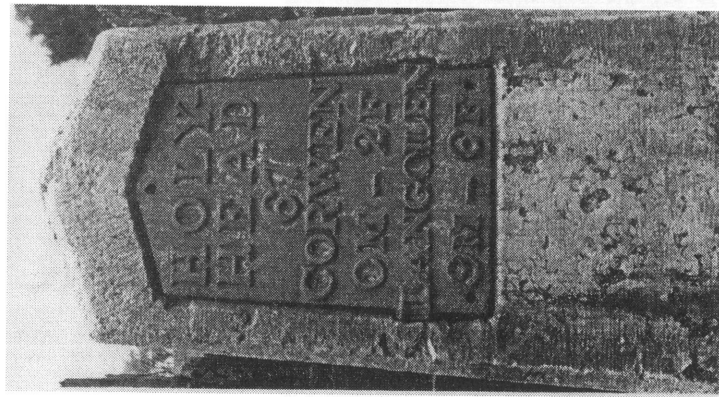


PLATE 25 – Milestone 67  
*From the archive*



PLATE 26– Milestone 75 – Photo 11.10

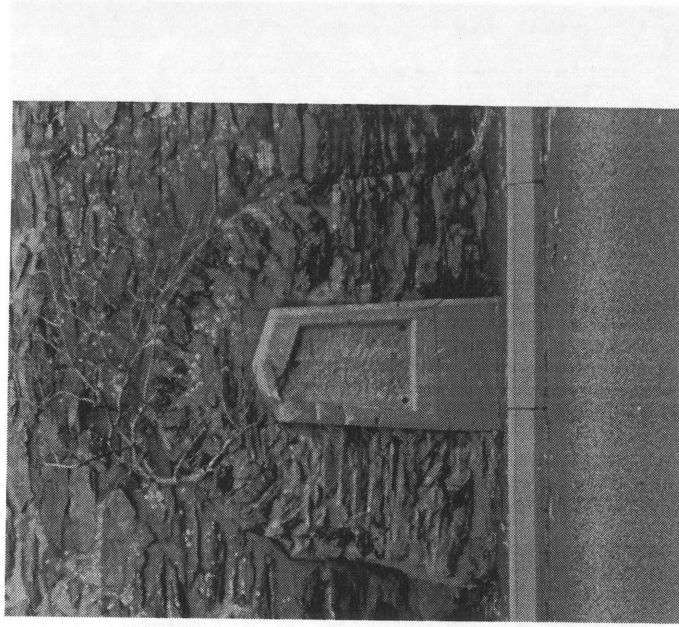


PLATE 27– Milestone 79– Photo 11.19



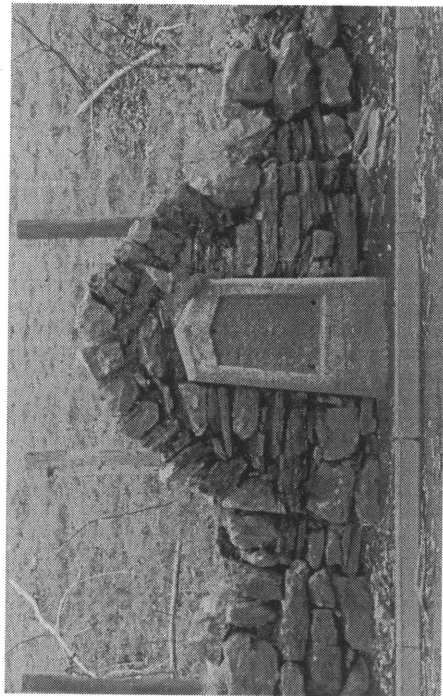


PLATE 28 - Milestone 80 - Photo 11.21



PLATE 29 - Milestone 83 - Photo HH83

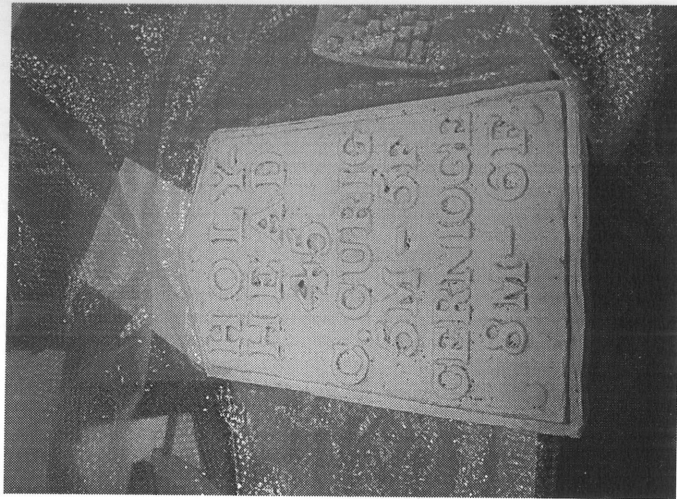


PLATE 30 - Cast of Milestone 45